

Slabs, Crawlspace, Basements, and Below Grade Spaces

Avoiding Mold



© 2005 Building Science Corporation

Mold and Water

- **Source**

- **Mold is a water problem**

- **Fixes**

- **No water no mold**



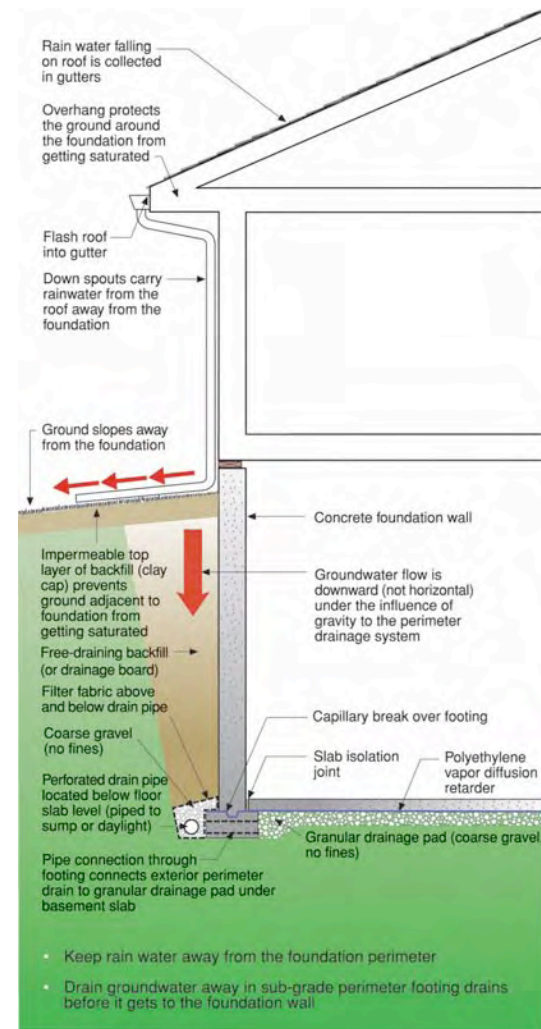
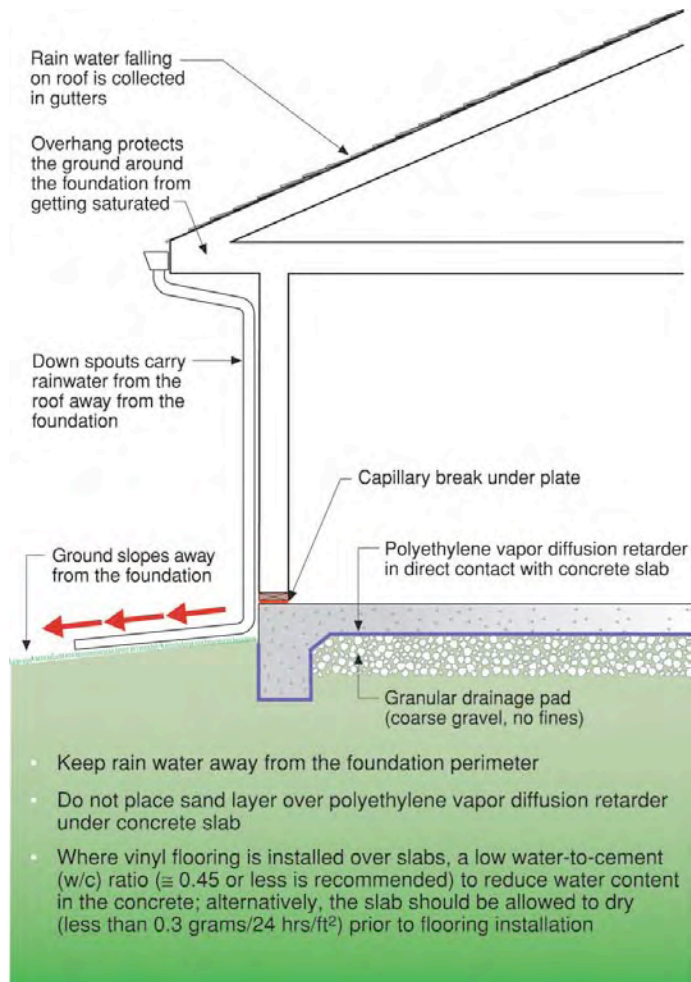
Find The Water... and you can

- **Find The Mold**
- **Clean Up The Mold**
- **Dry The Building**
- **Make Sure It Doesn't Happen Again**



© 2005 Building Science Corporation

Exclude the Water



© 2005 Building Science Corporation



© 2005 Building Science Corporation

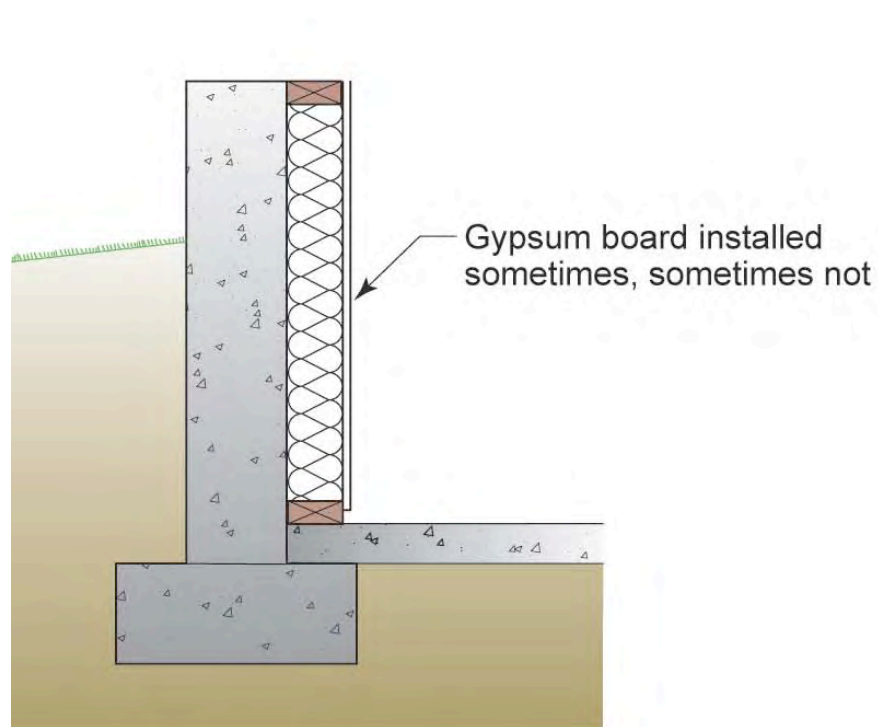


© 2005 Building Science Corporation

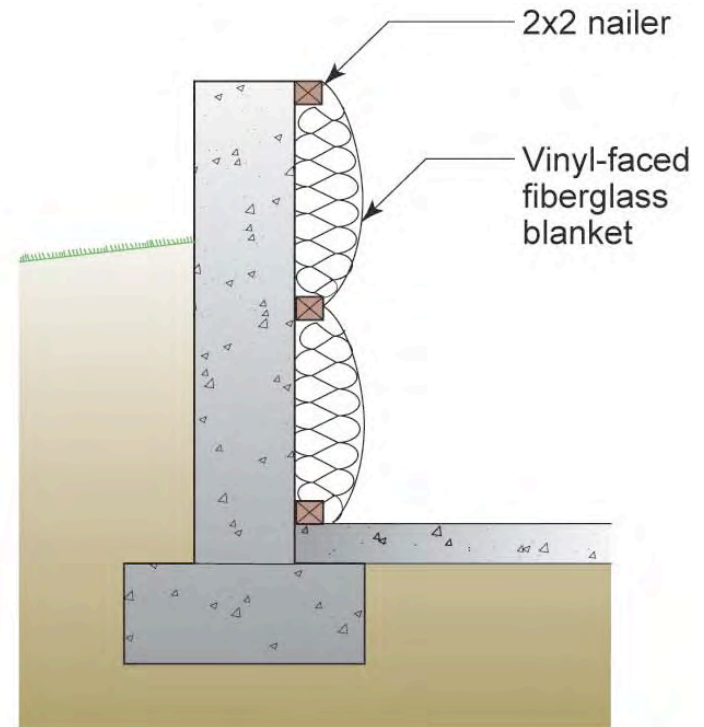


© 2005 Building Science Corporation

The Old Way - Grows Mold



Interior Stud Framing



Interior Blanket







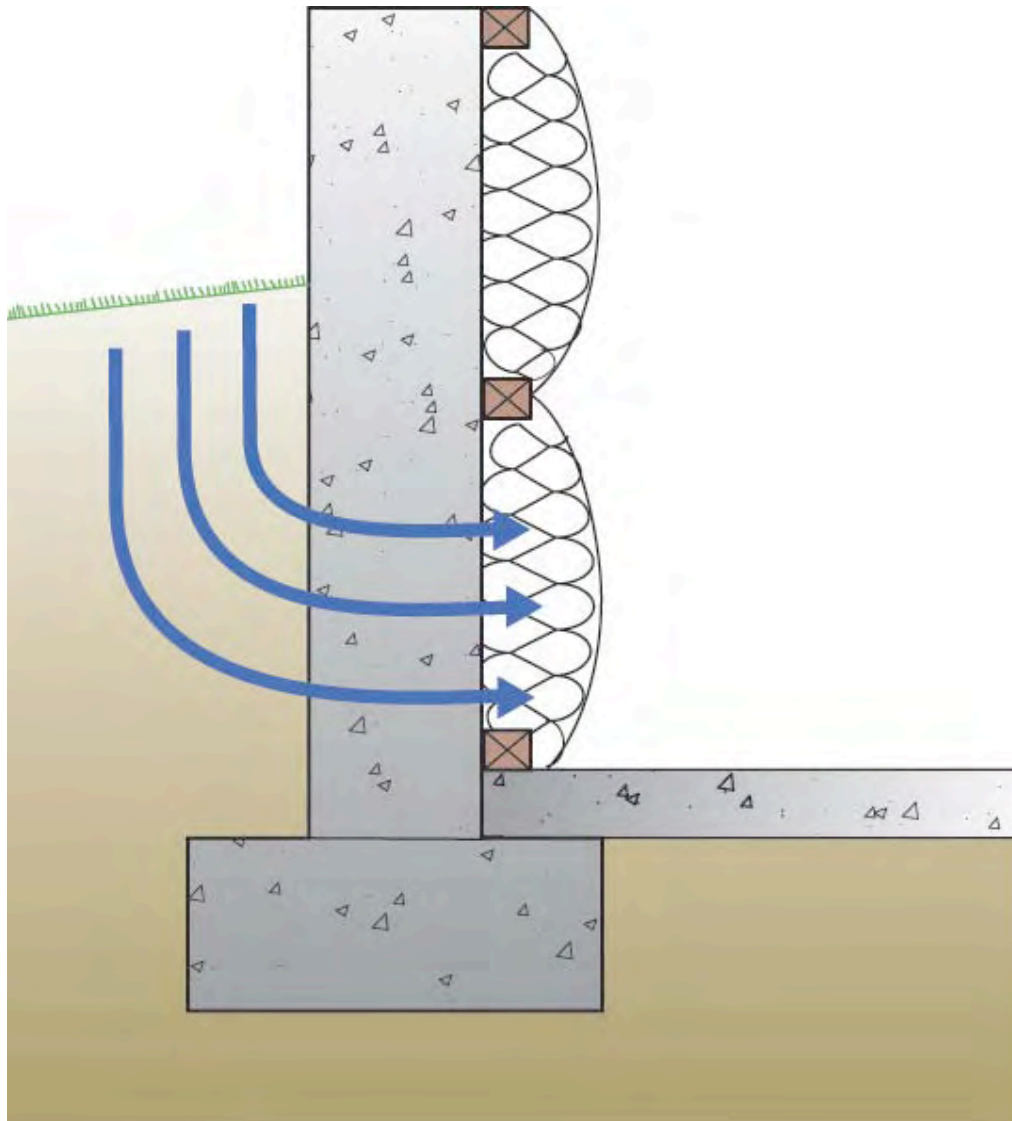
© 2005 Building Science Corporation



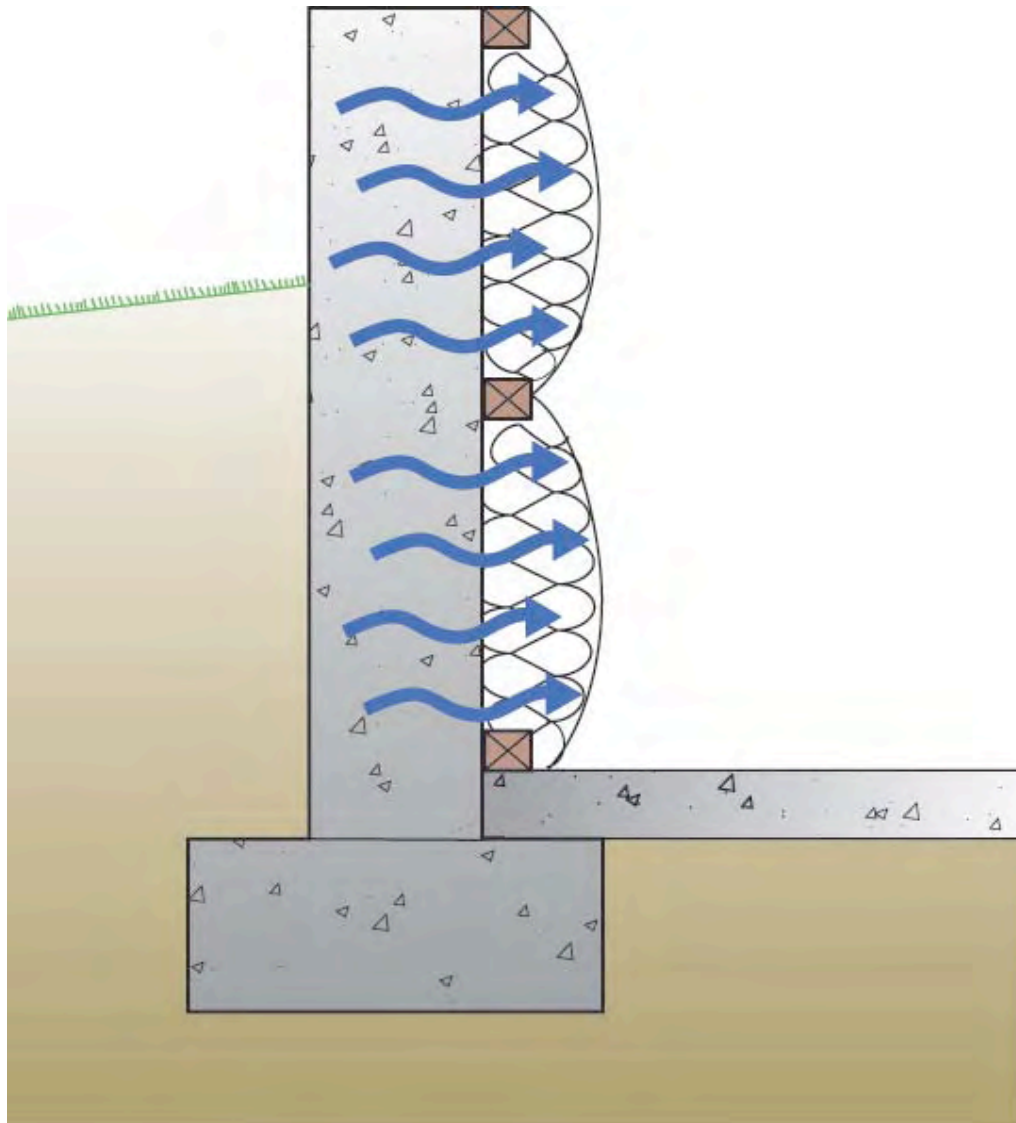
© 2005 Building Science Corporation



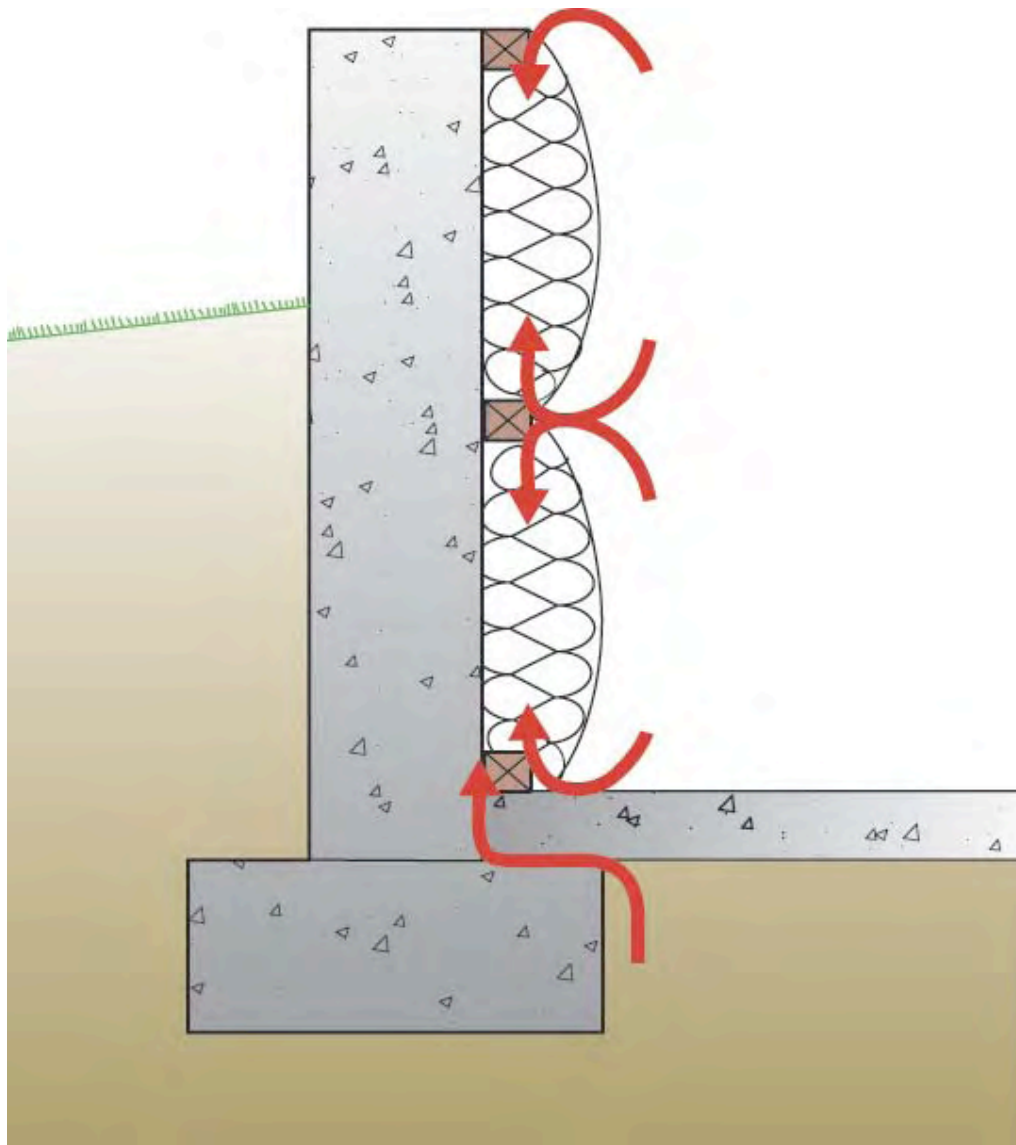
© 2005 Building Science Corporation



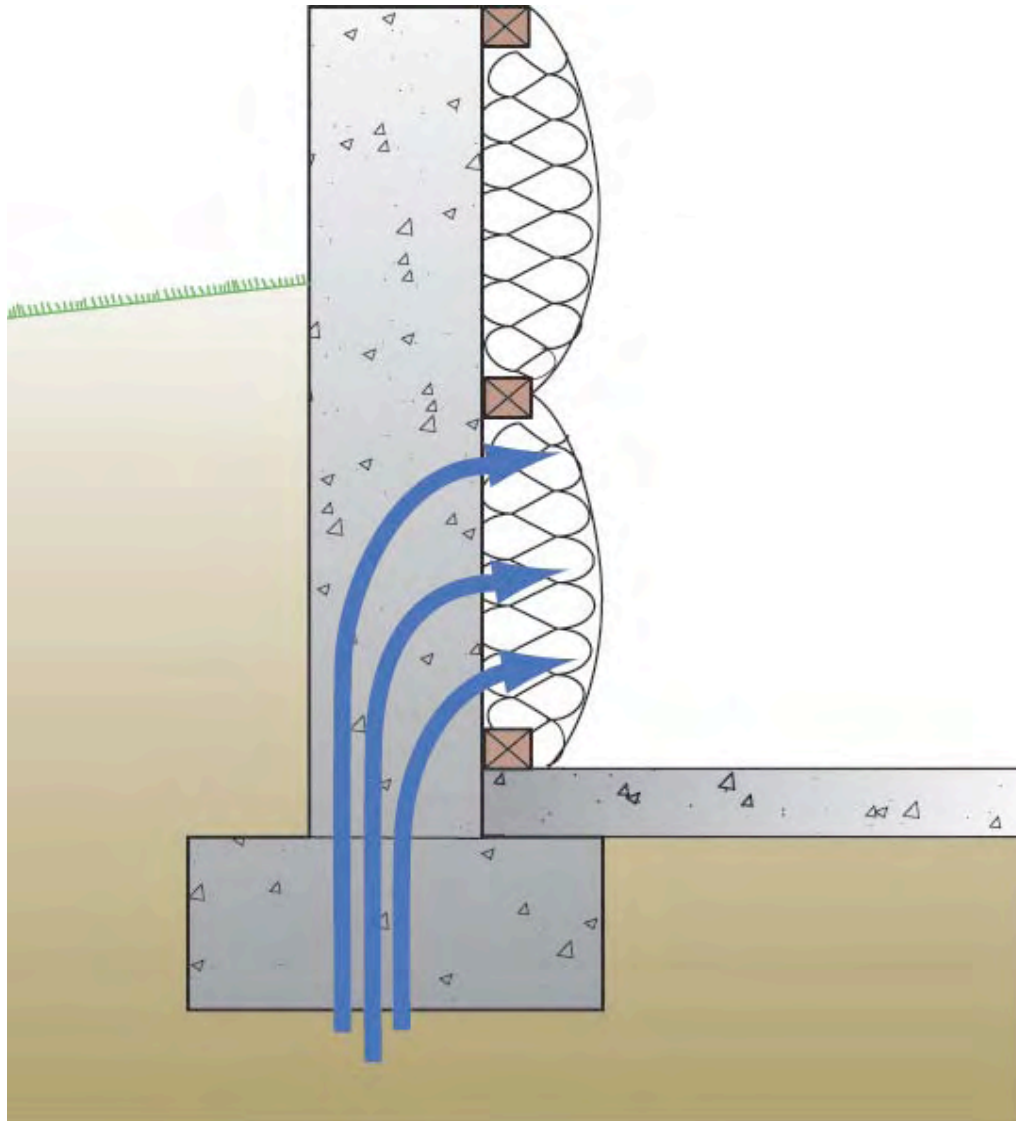
© 2005 Building Science Corporation



© 2005 Building Science Corporation



© 2005 Building Science Corporation



© 2005 Building Science Corporation

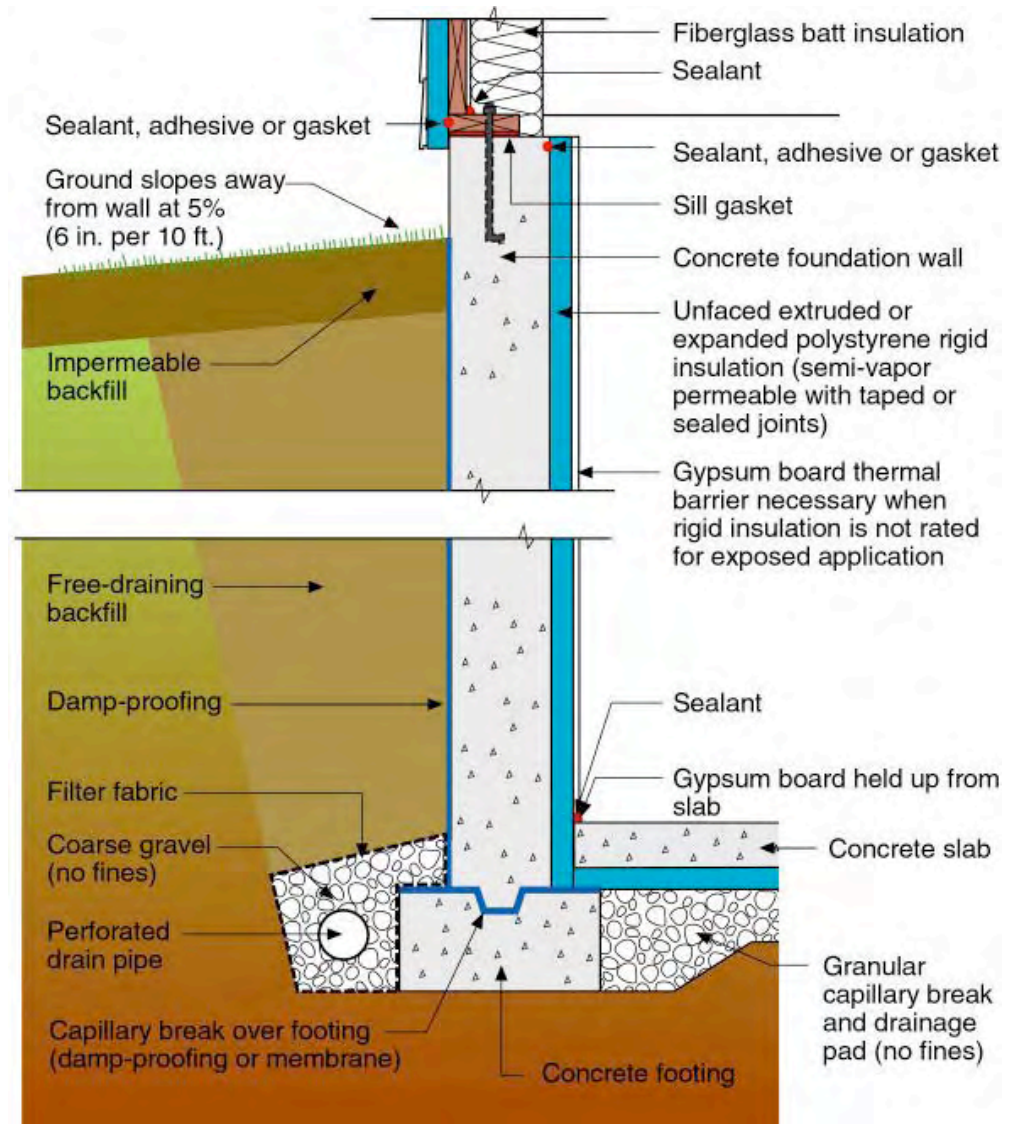


© 2005 Building Science Corporation

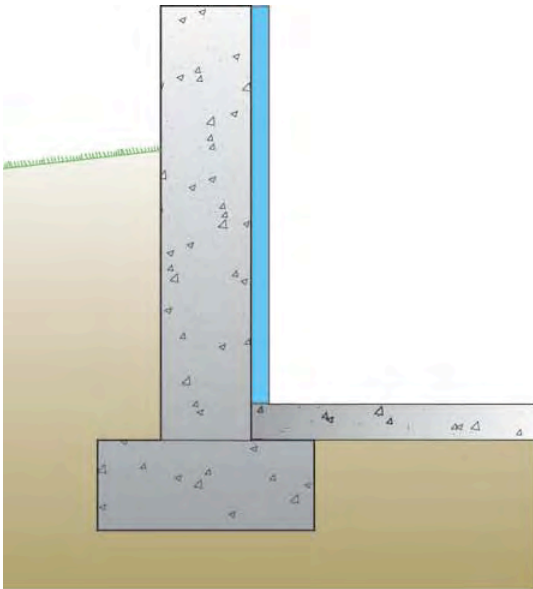


© 2005 Building Science Corporation

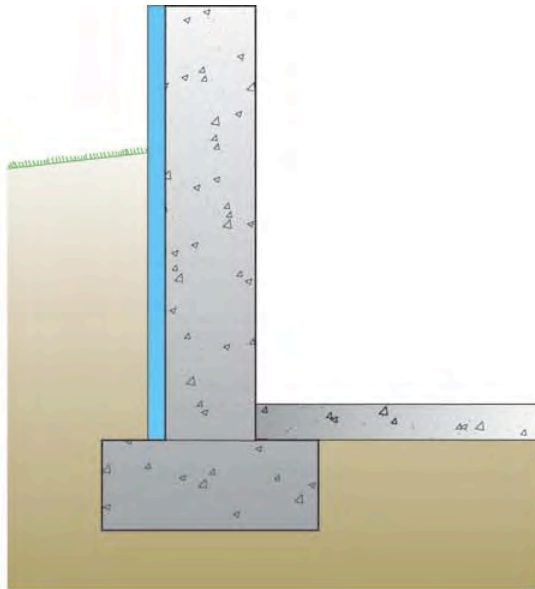
New Way - No Mold



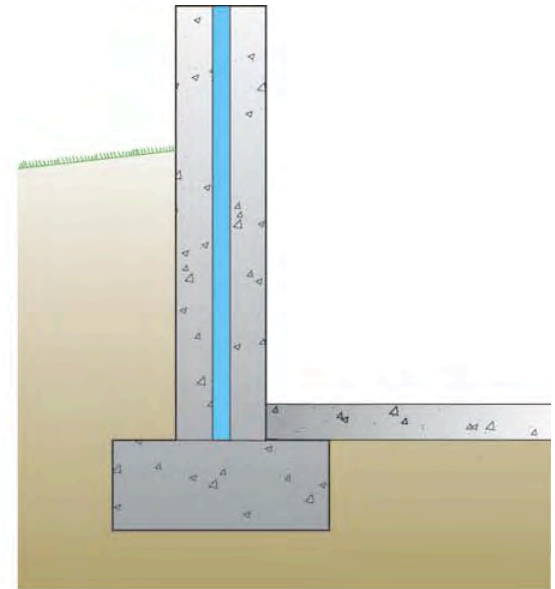
© 2005 Building Science Corporation



**Internally Insulated
Basement**



**Externally Insulated
Basement**



**Basement Insulated in
the Middle**

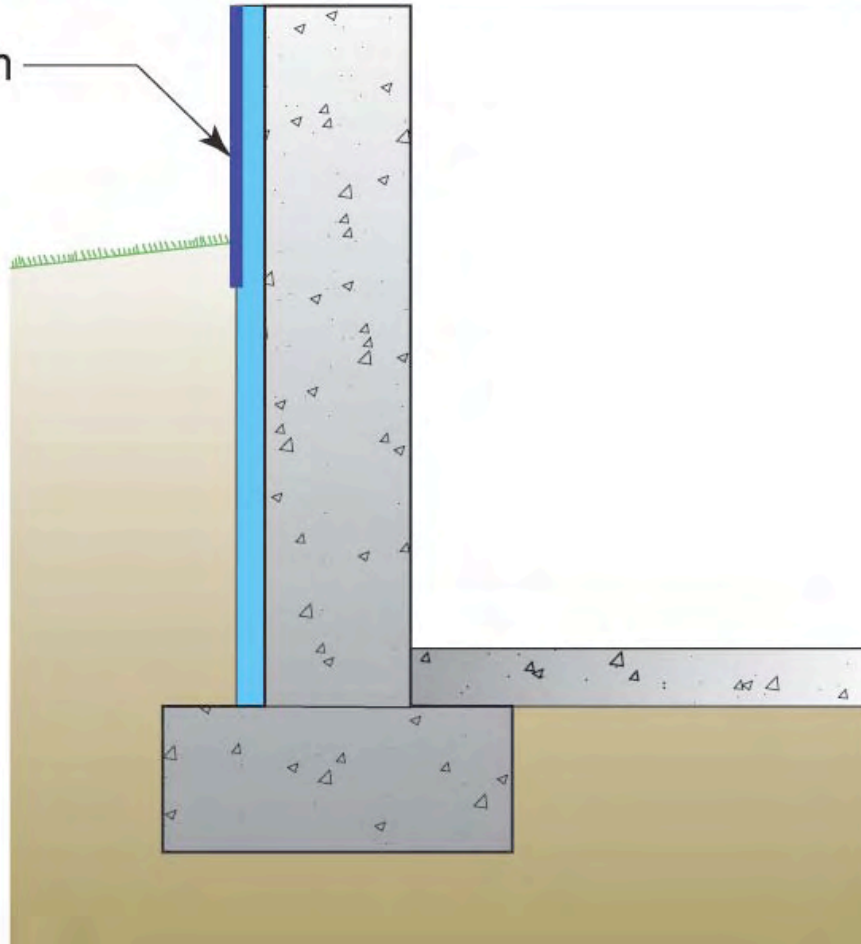


© 2005 Building Science Corporation

Structure of house on foundation must be shifted outward to compensate for thickness of exterior insulation



Protection layer/system





© 2005 Building Science Corporation



© 2005 Building Science Corporation



© 2005 Building Science Corporation



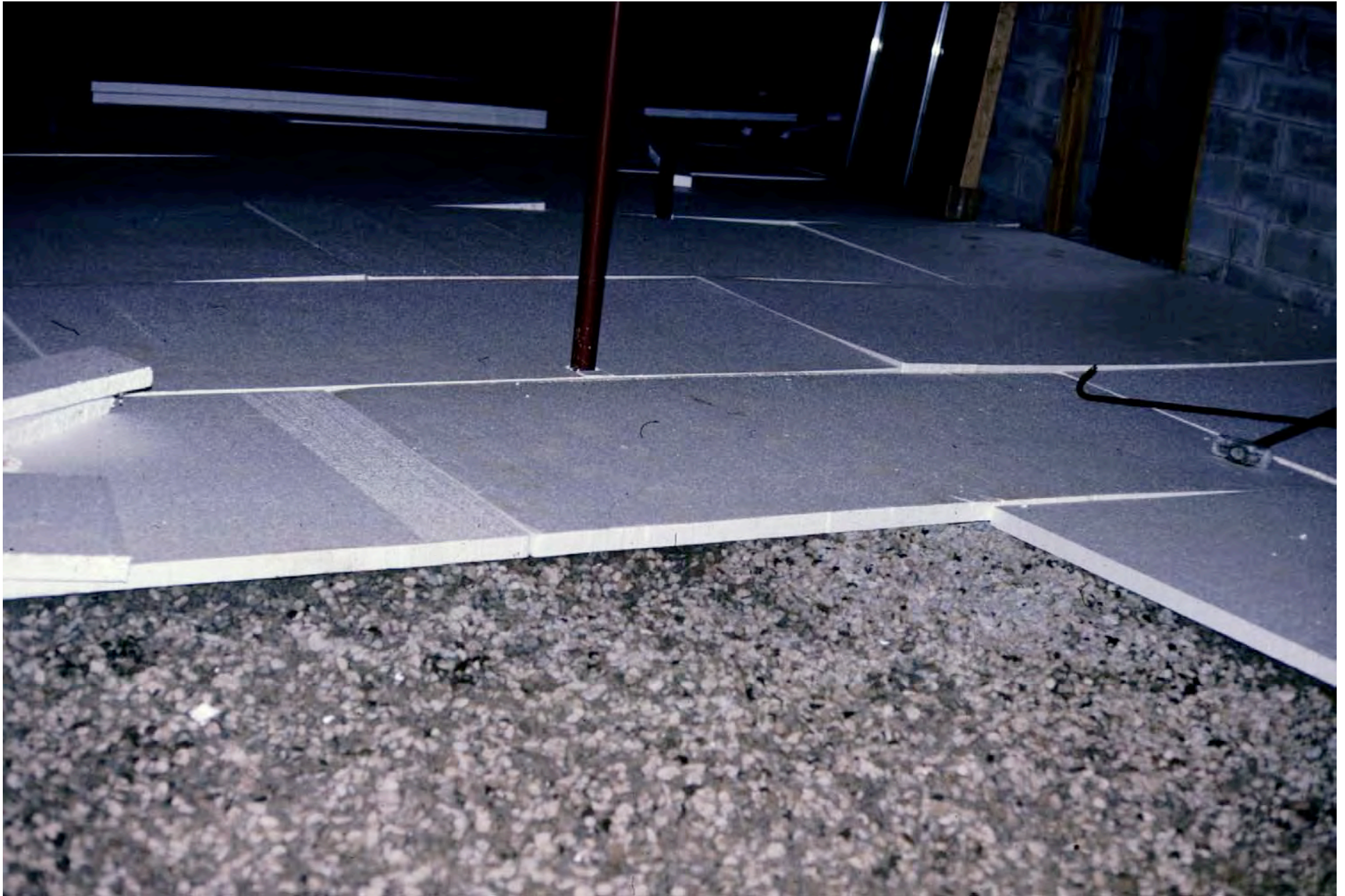
© 2005 Building Science Corporation



© 2005 Building Science Corporation



© 2005 Building Science Corporation



© 2005 Building Science Corporation

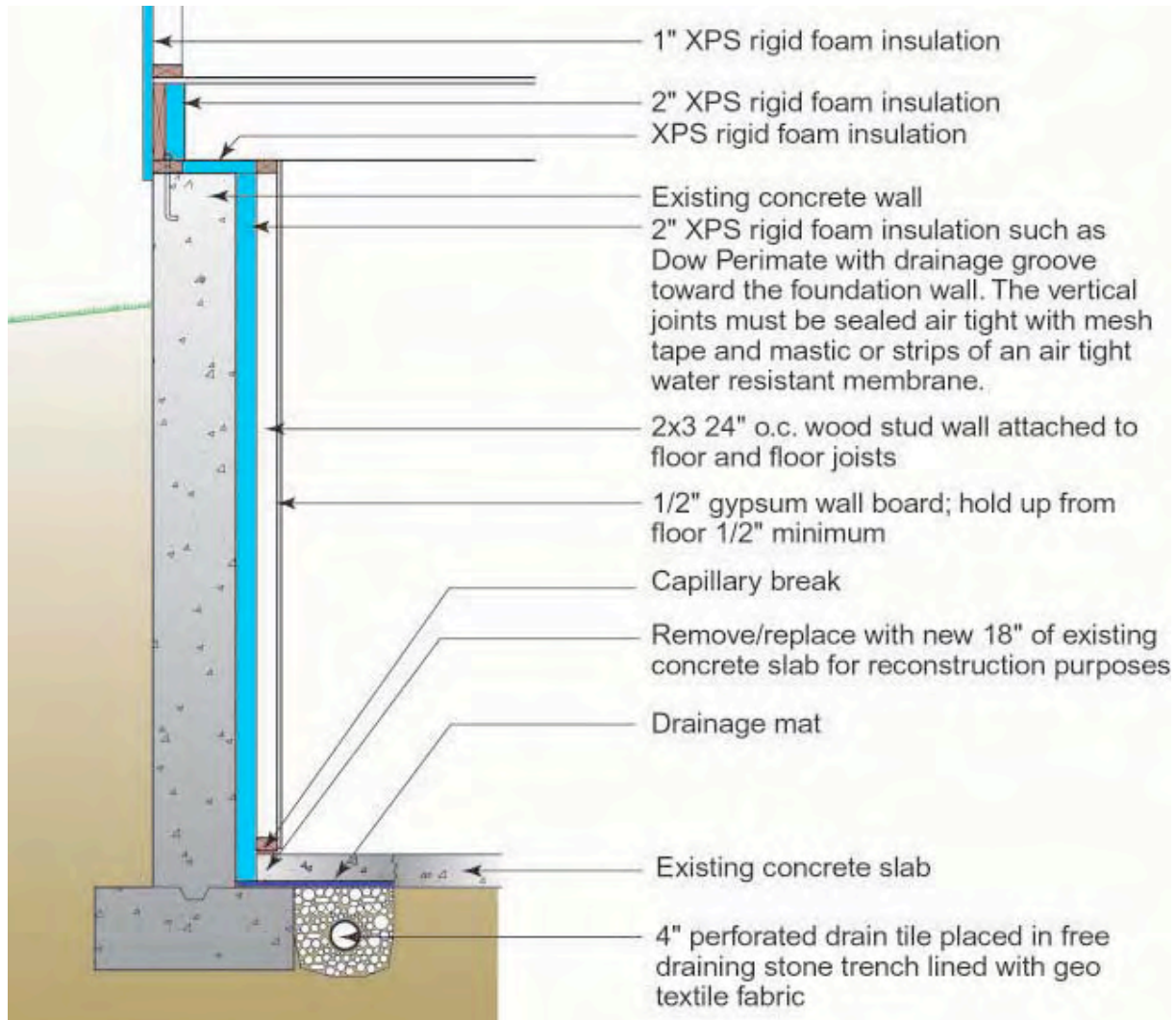
Finished Floor over Slab on Grade



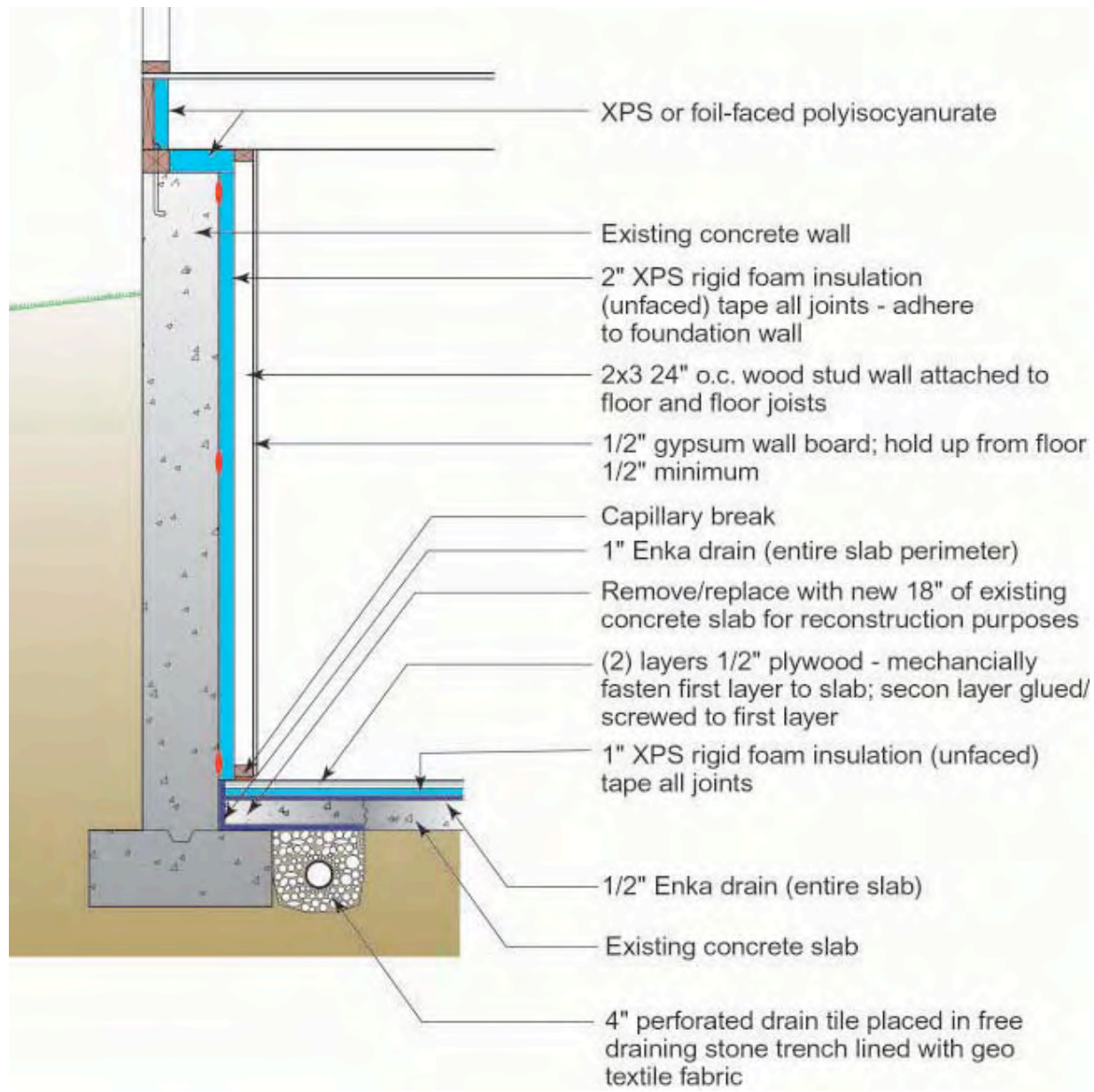
© 2005 Building Science Corporation



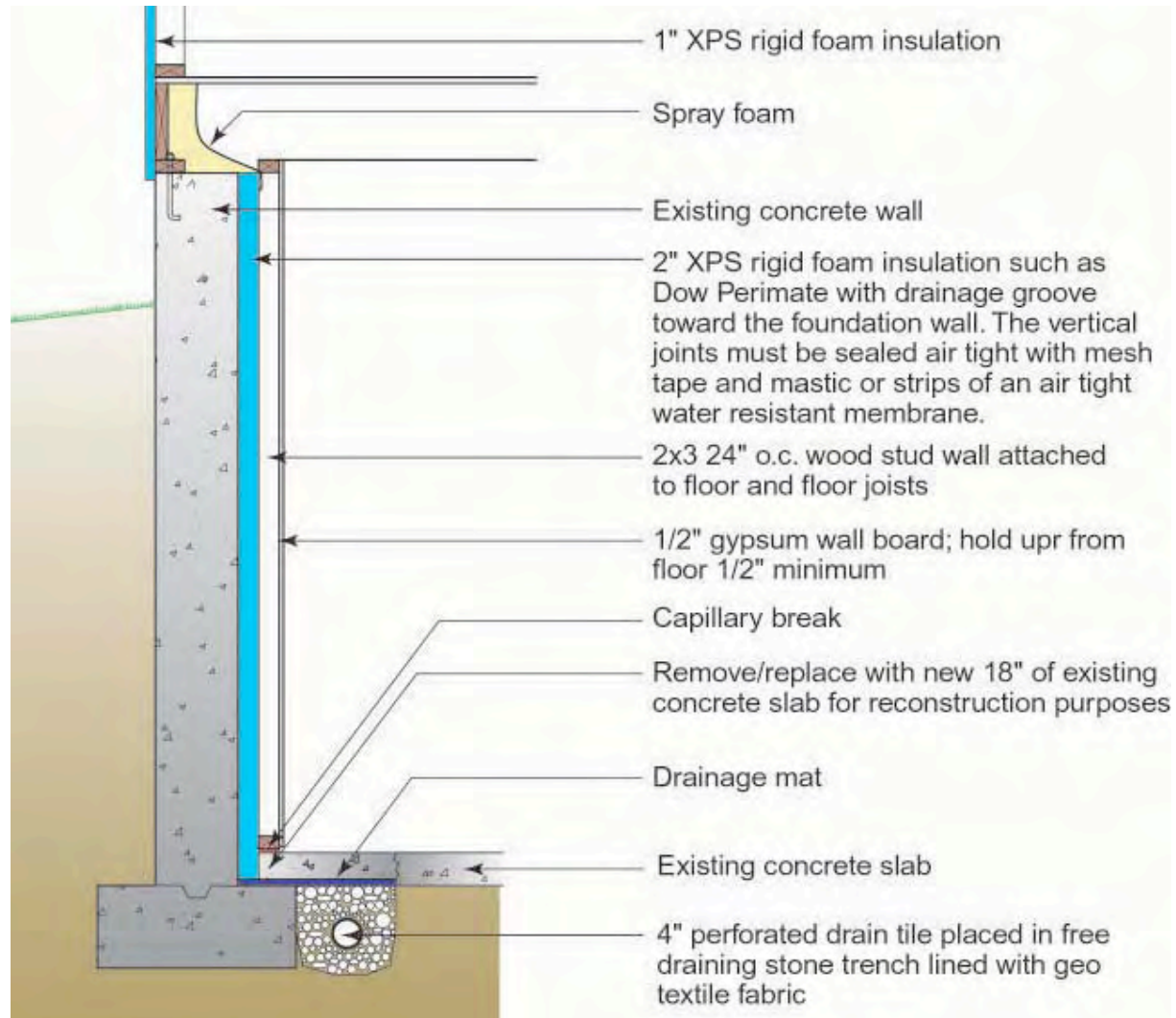
© 2005 Building Science Corporation



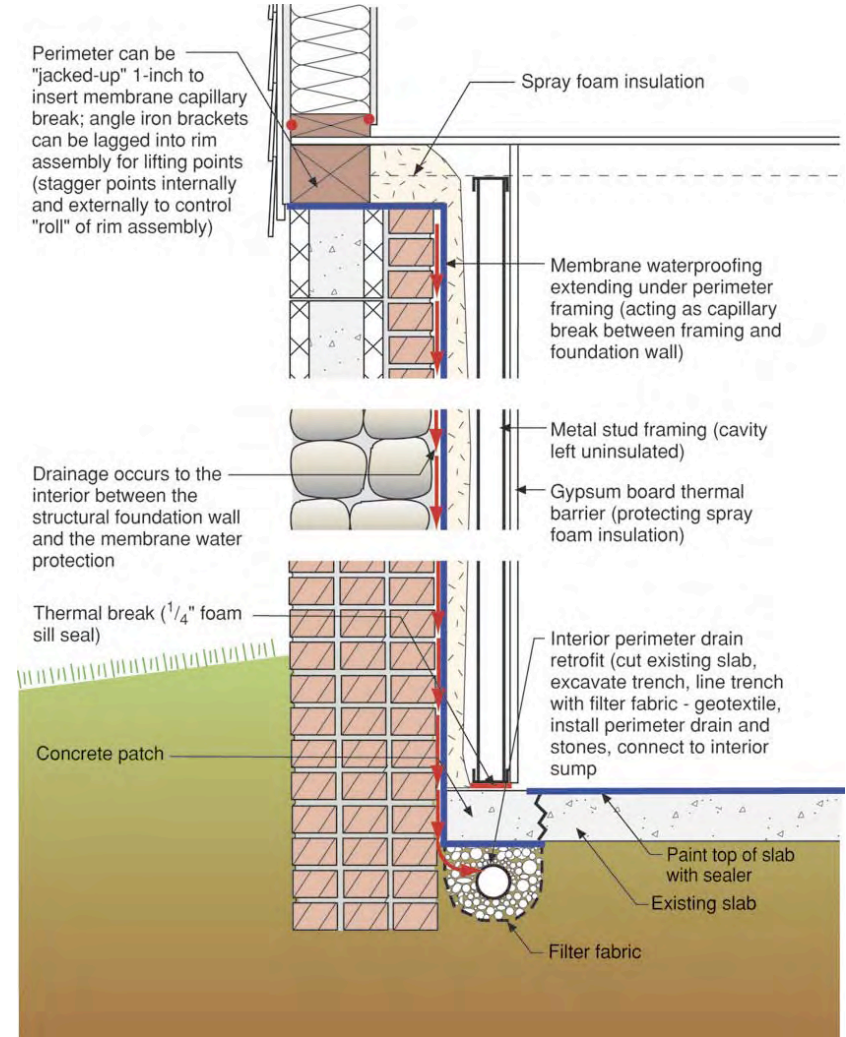
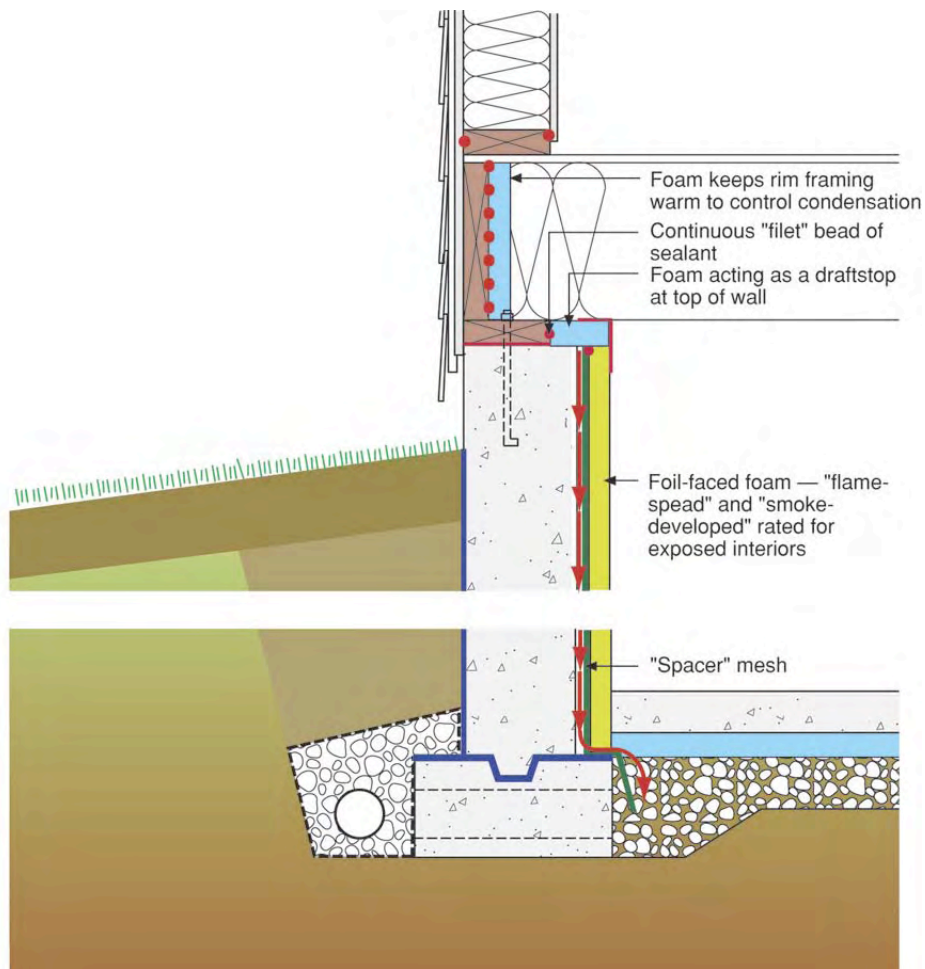
© 2005 Building Science Corporation



© 2005 Building Science Corporation



© 2005 Building Science Corporation





© 2005 Building Science Corporation



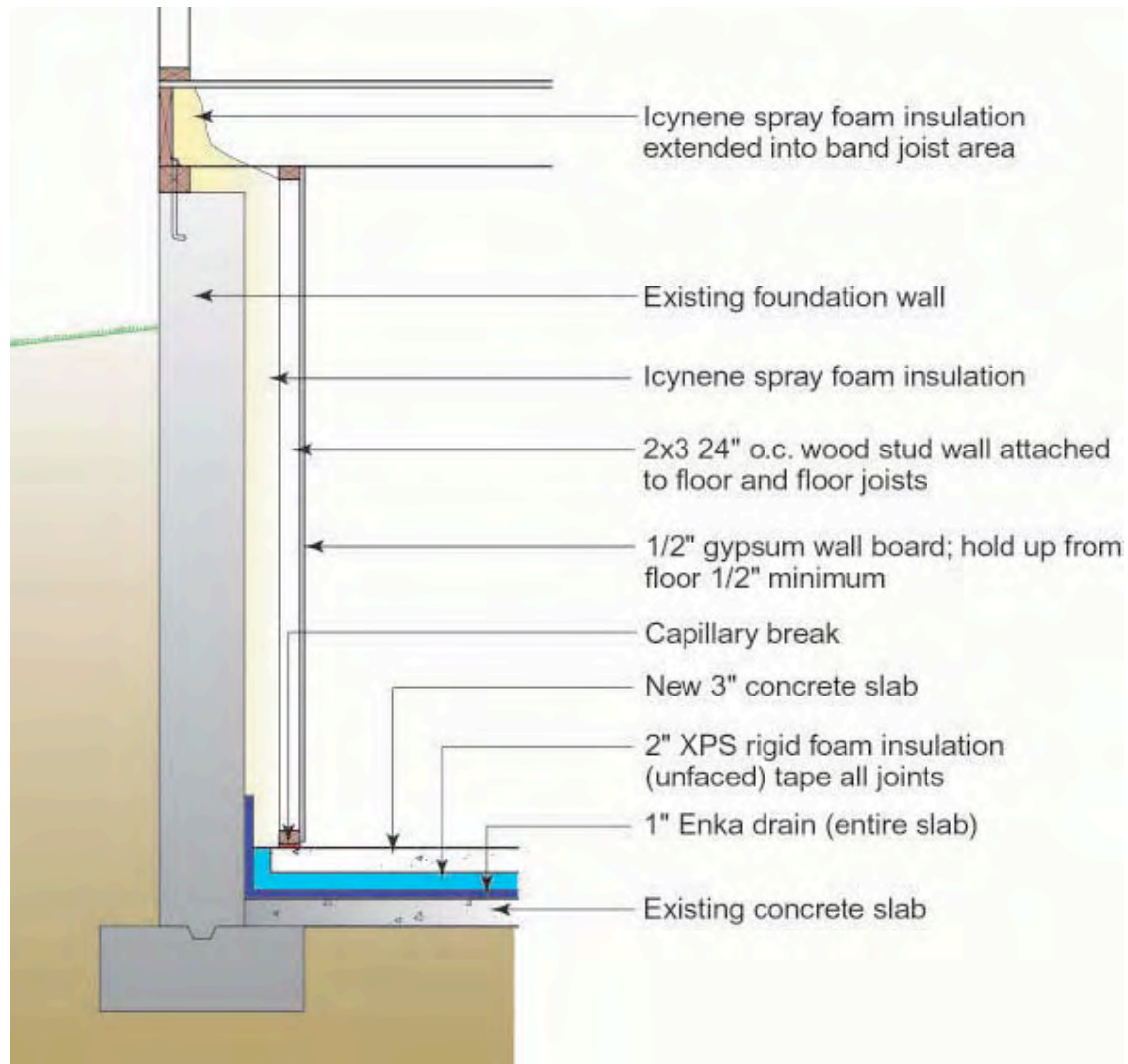
© 2005 Building Science Corporation



© 2005 Building Science Corporation



© 2005 Building Science Corporation



© 2005 Building Science Corporation



© 2005 Building Science Corporation



© 2005 Building Science Corporation



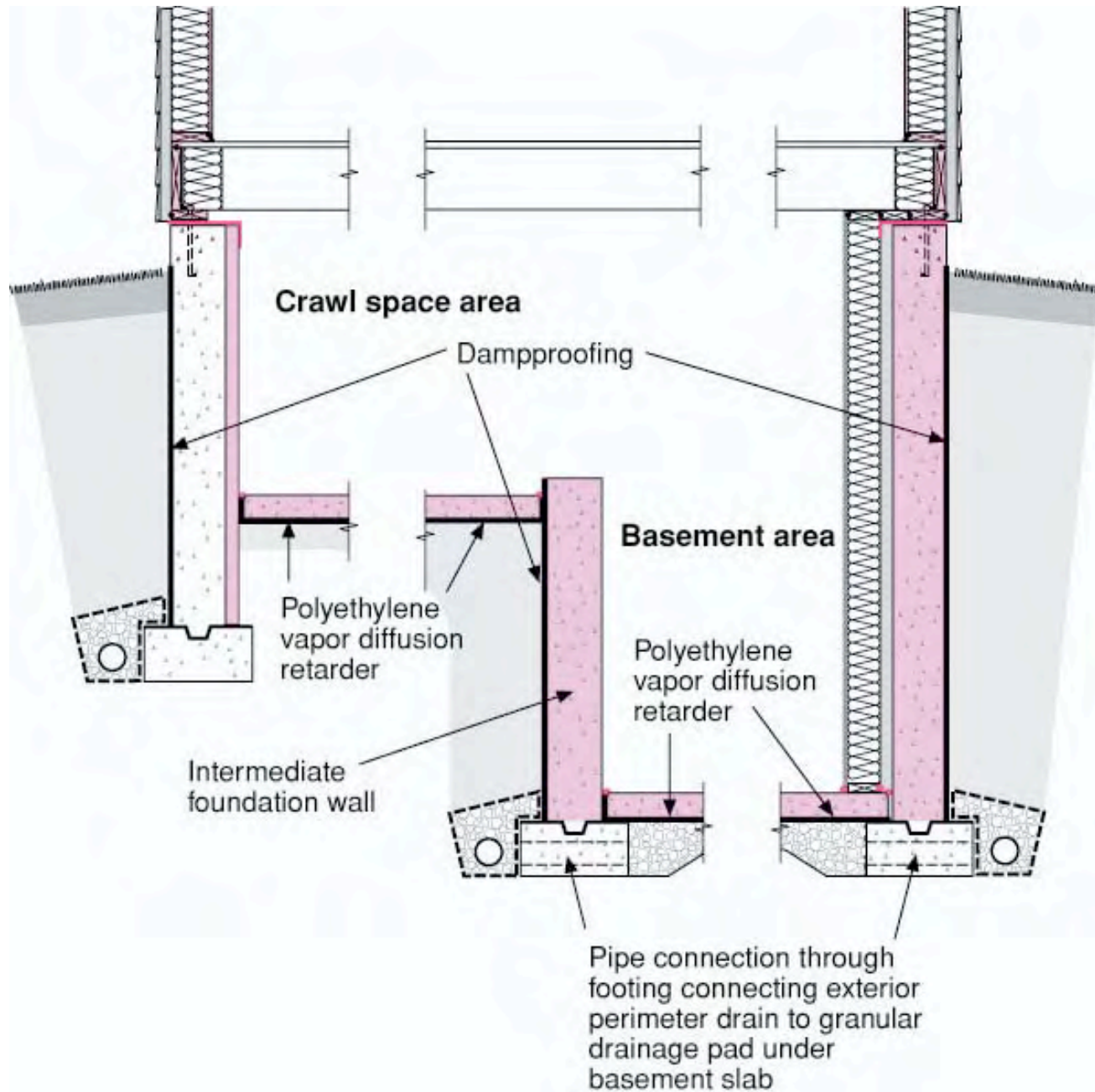


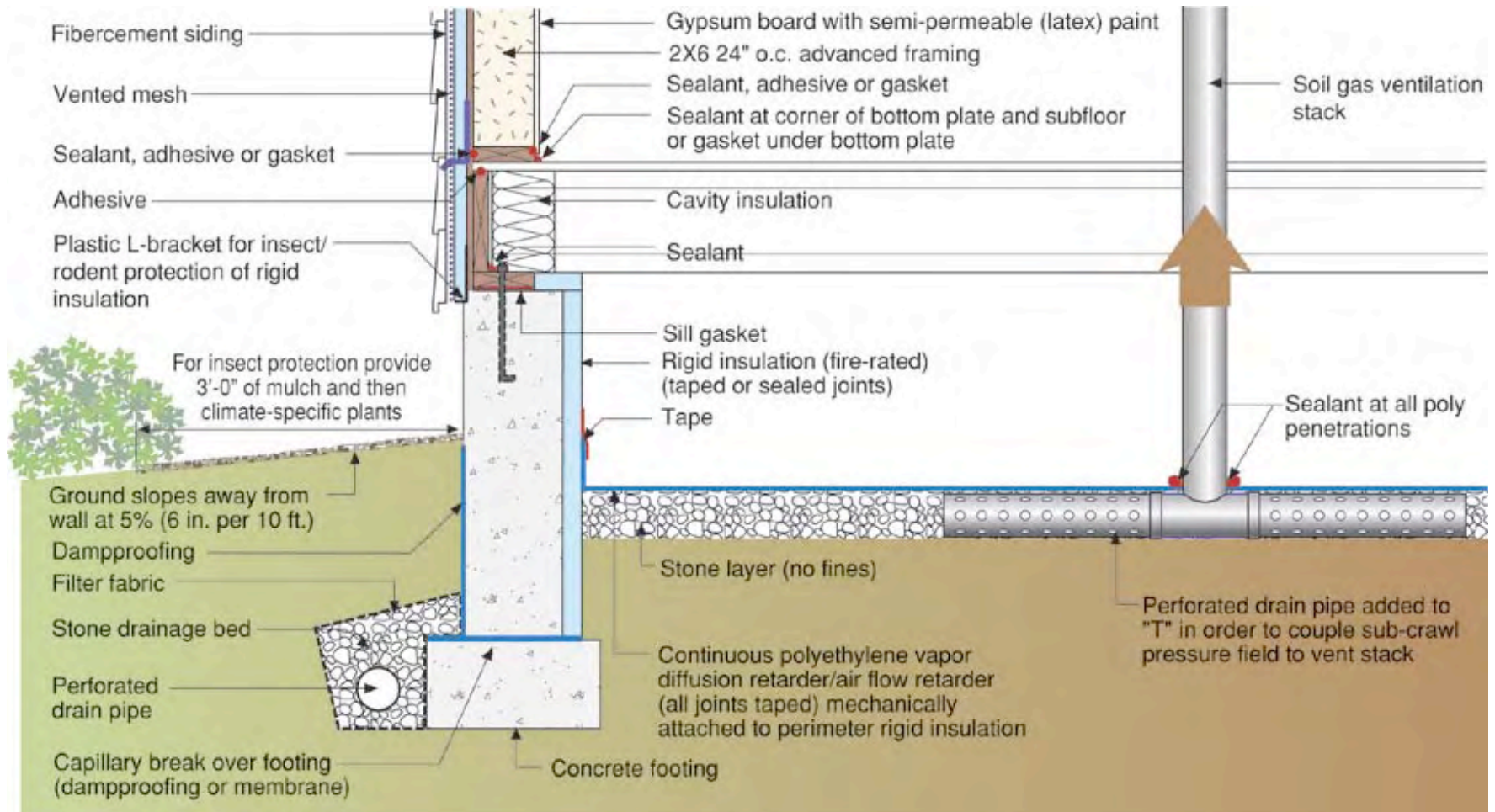
© 2005 Building Science Corporation



© 2005 Building Science Corporation

Basements Connected to Crawl Spaces





© 2005 Building Science Corporation



© 2005 Building Science Corporation



© 2005 Building Science Corporation



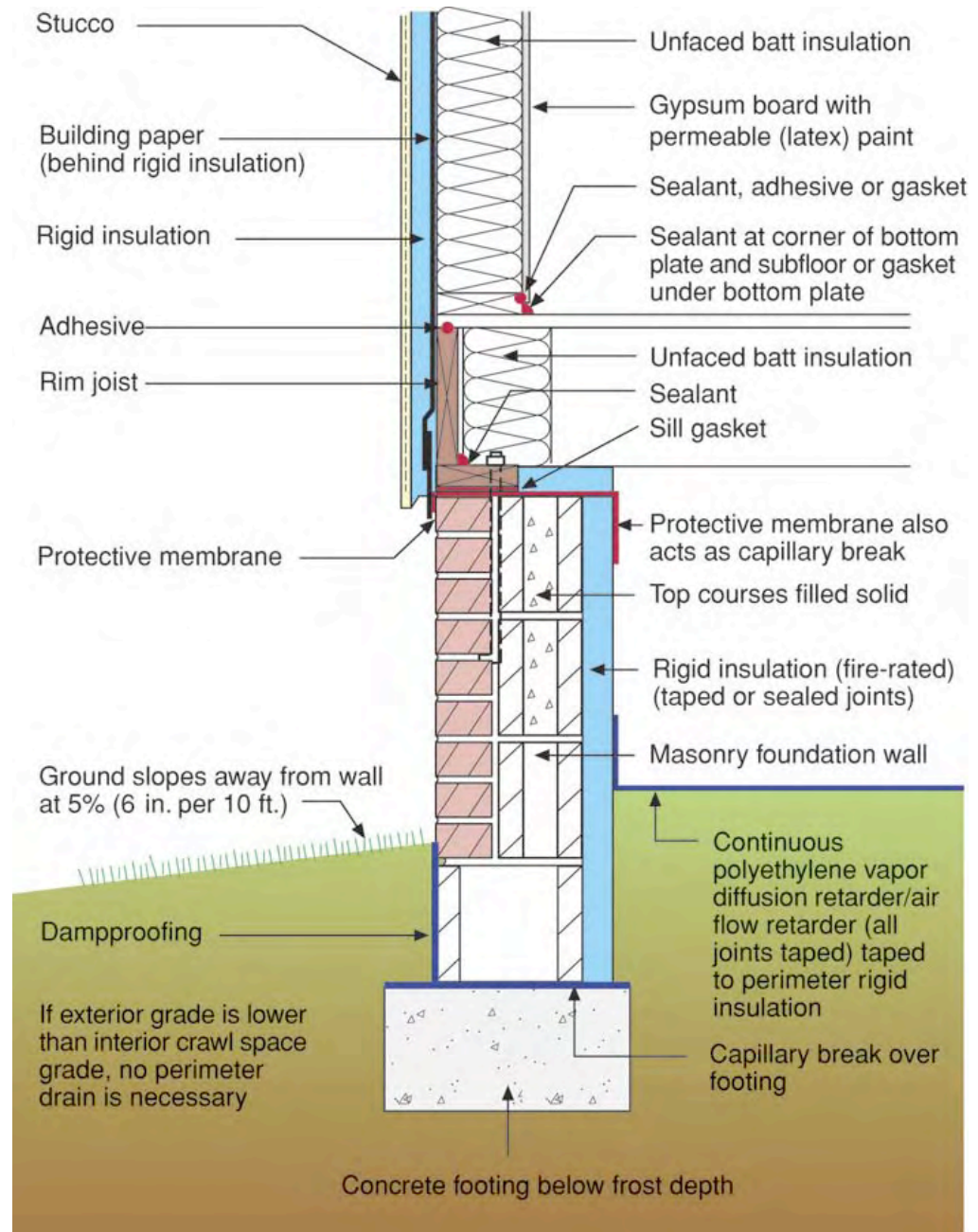
© 2005 Building Science Corporation



© 2005 Building Science Corporation



© 2005 Building Science Corporation



© 2005 Building Science Corporation



© 2005 Building Science Corporation

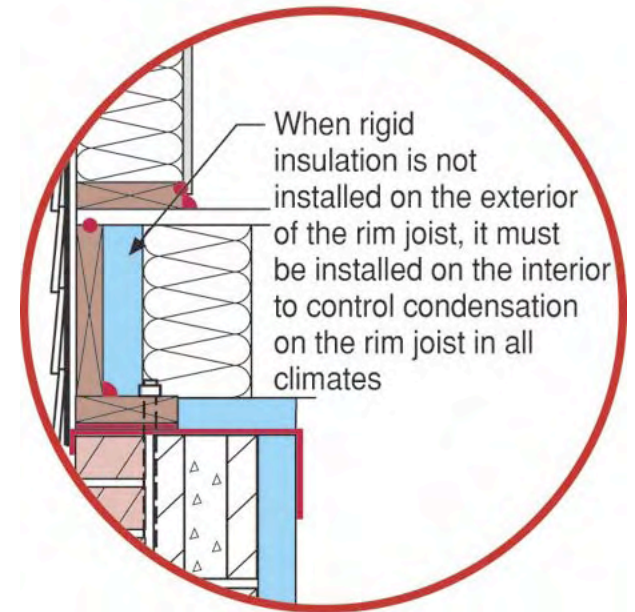


© 2005 Building Science Corporation



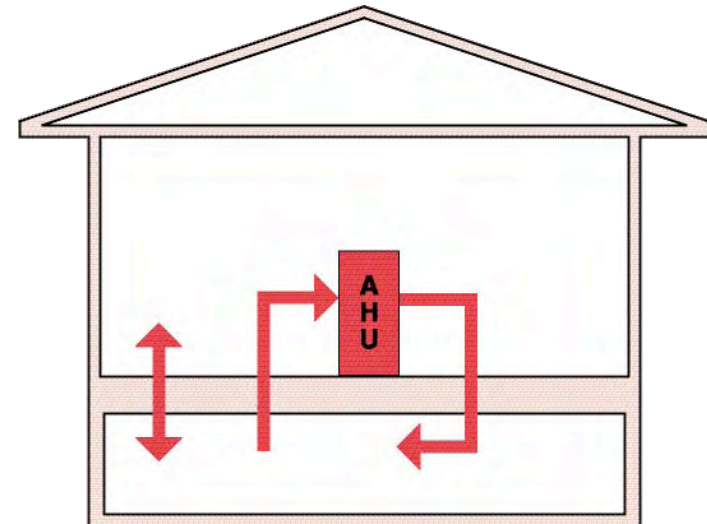
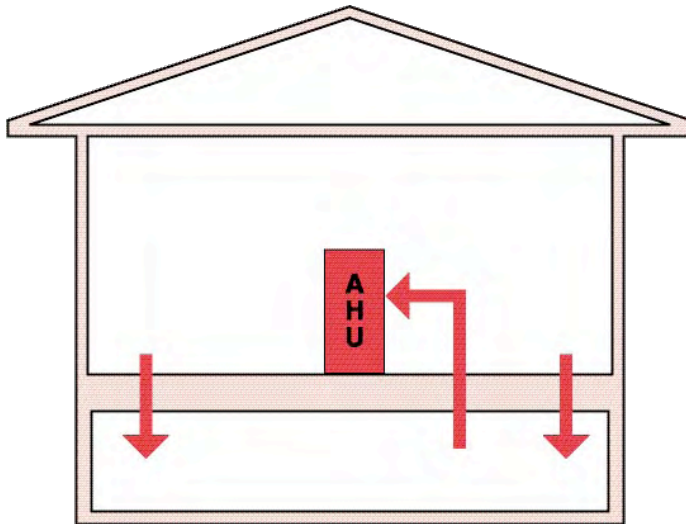
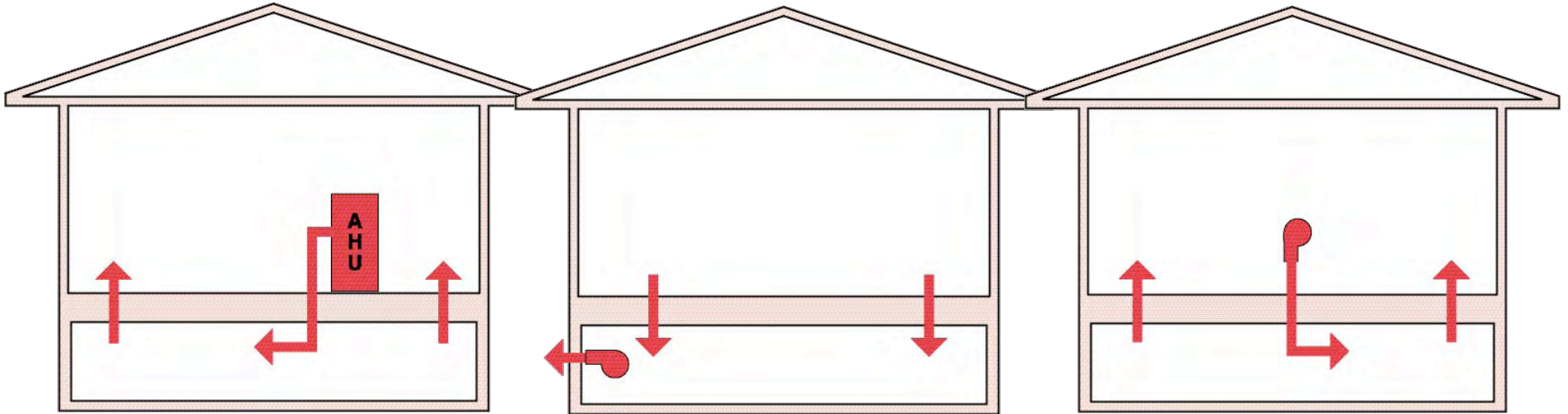
© 2005 Building Science Corporation

Rim Joists

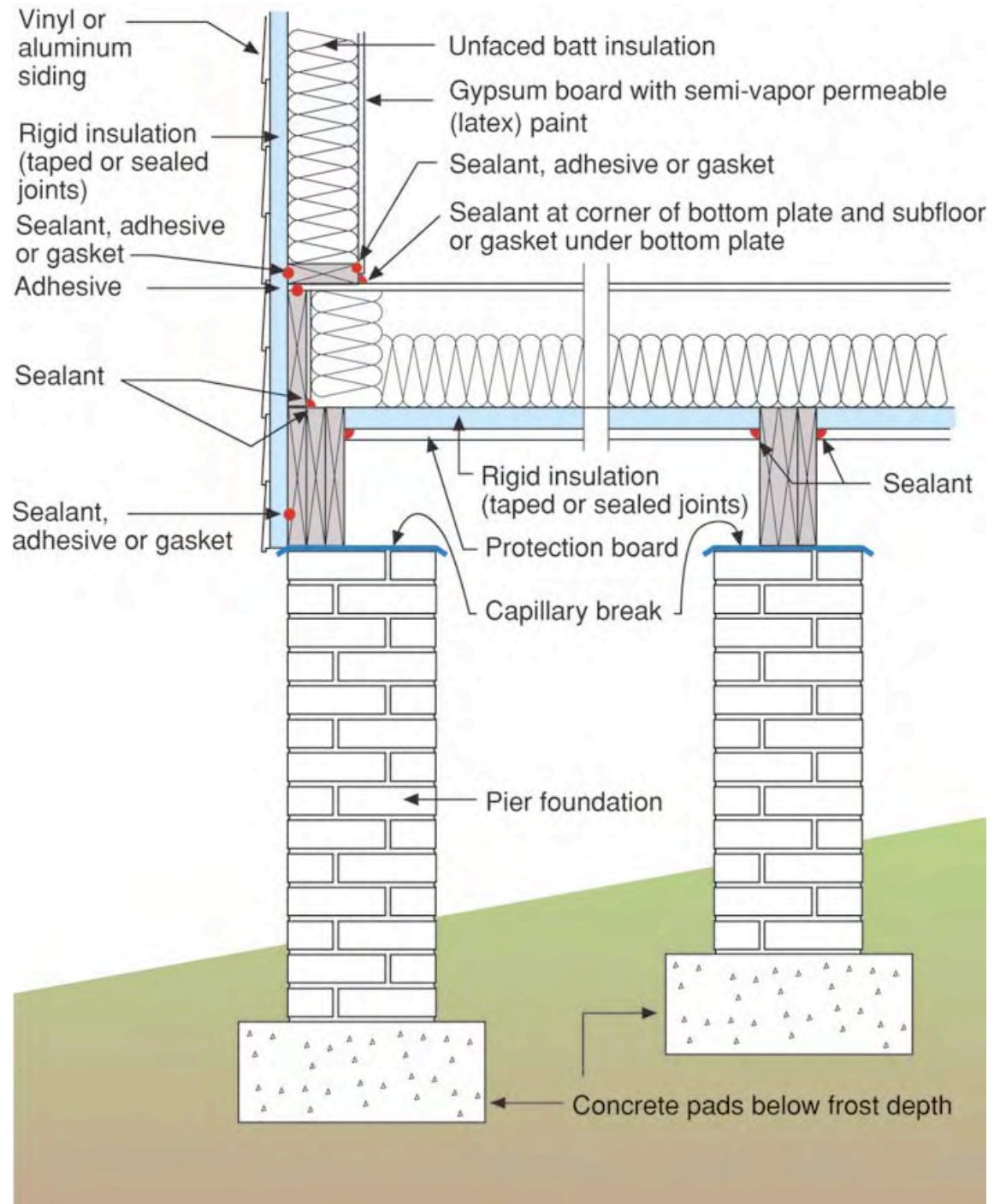


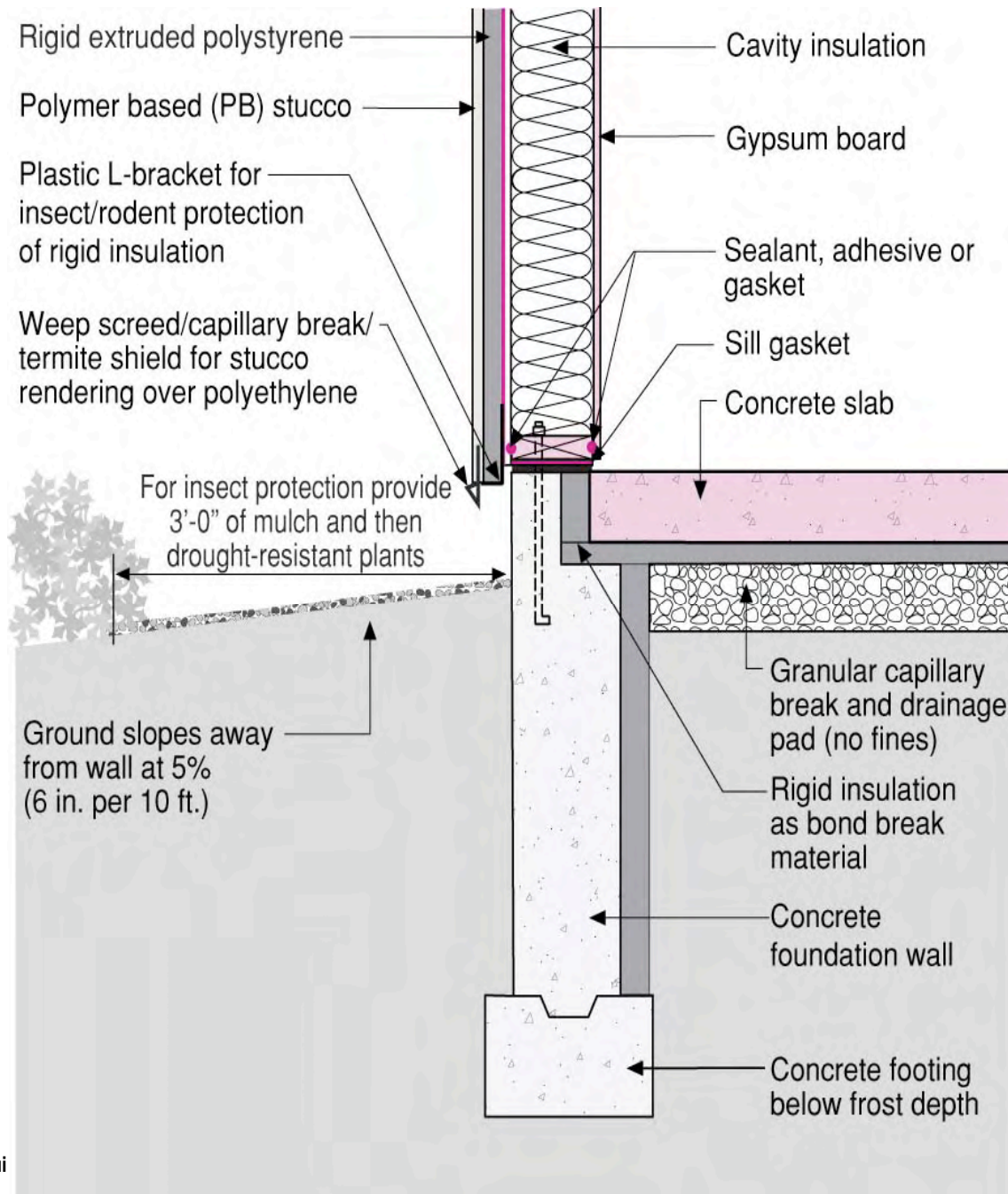
© 2005 Building Science Corporation

Conditioning Unvented Crawlspace



© 2005 Building Science Corporation





© 2005 Bui





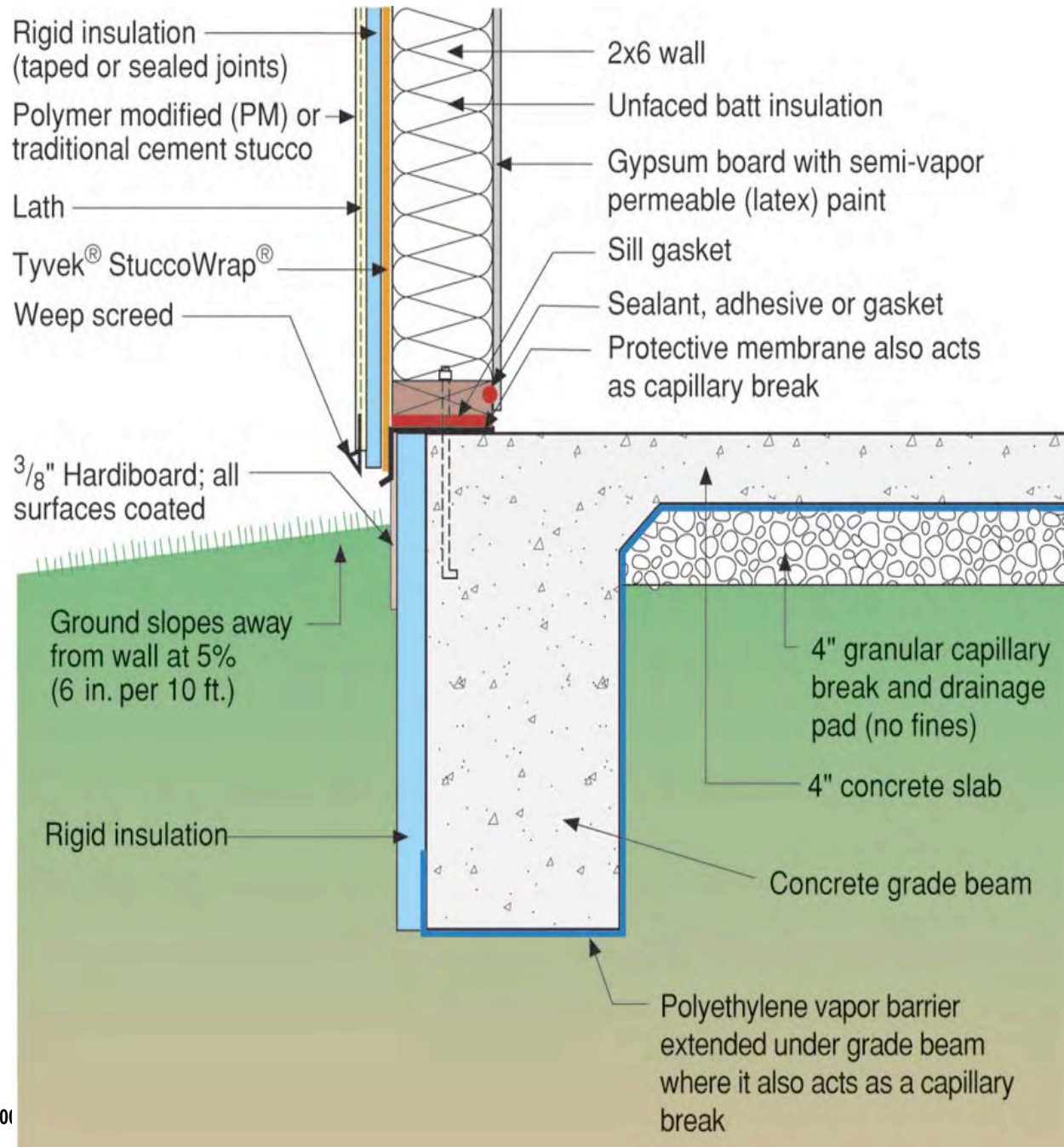




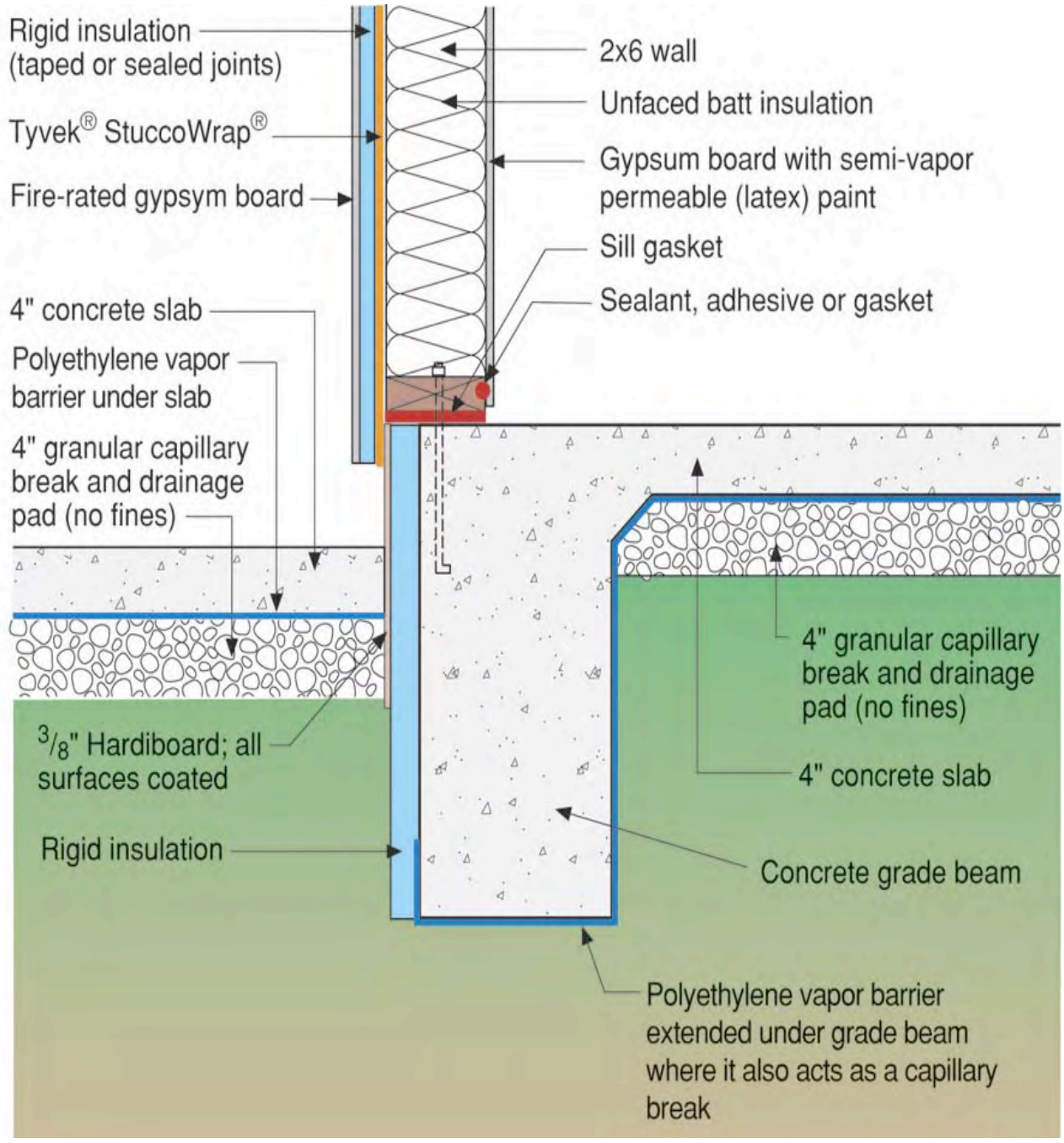








© 201



© 2



