

Joseph Lstiburek, Ph.D., P.Eng, ASHRAE Fellow

Building Science

Adventures In Building Science

www.buildingscience.com

IECC 5

New Construction - Easy

Retrofit – Not so easy...but doable

Conservation – IECC 5

5 – 30 – 60 - 1.5

Windows, Wall, Roof

1.5 ach@50 with ERV

Renewables – IECC 5

PV...need a bunch....but where to put them...







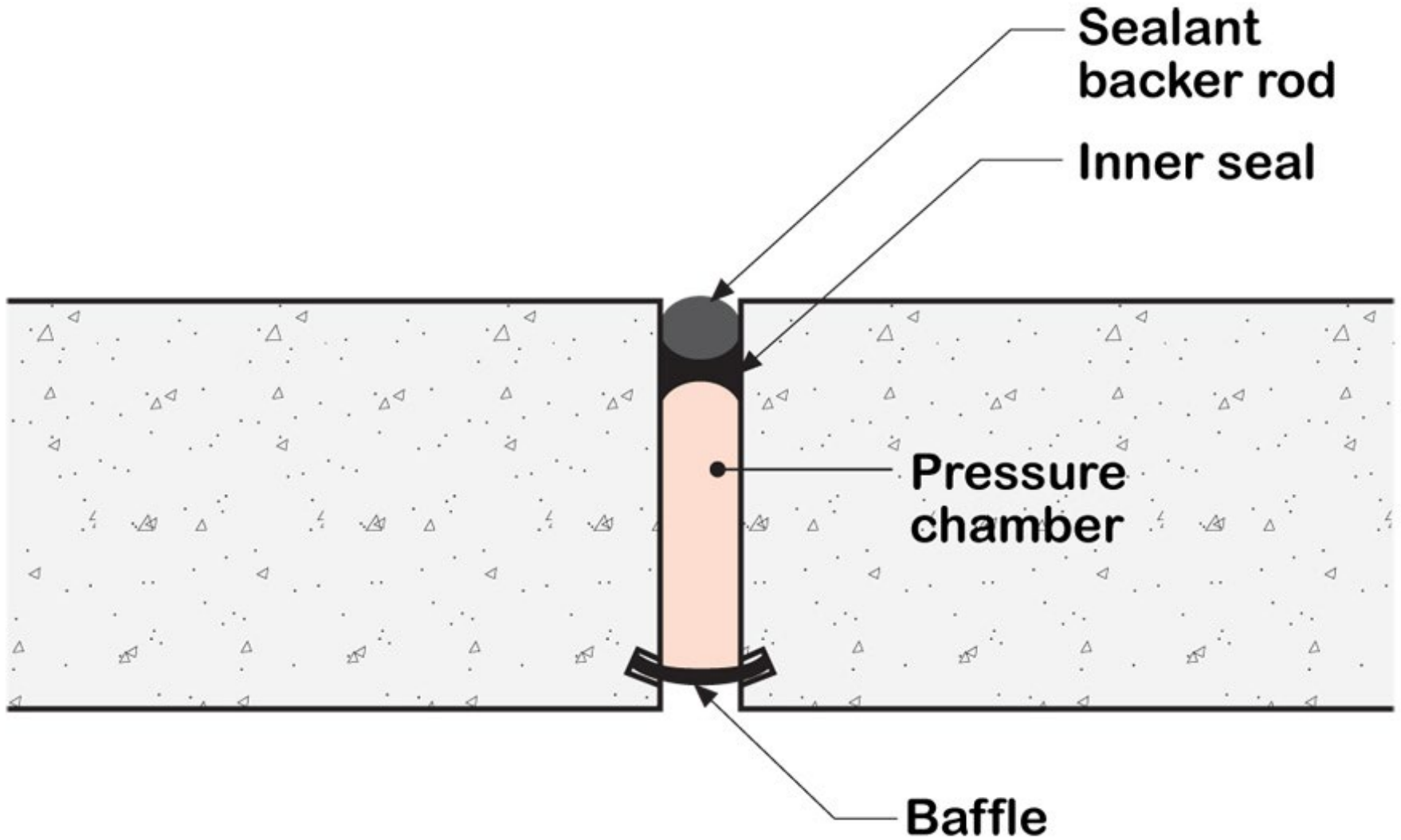


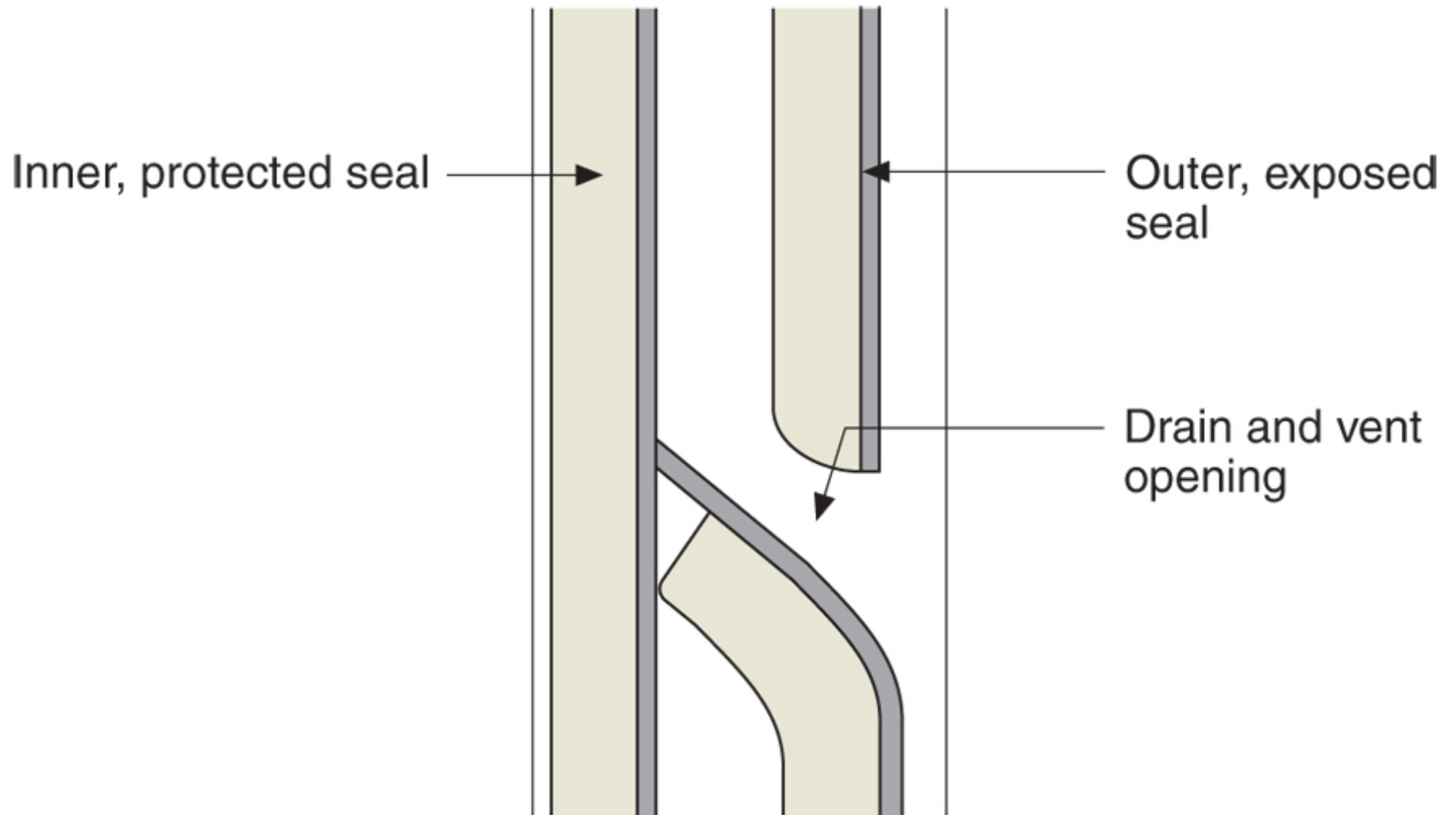


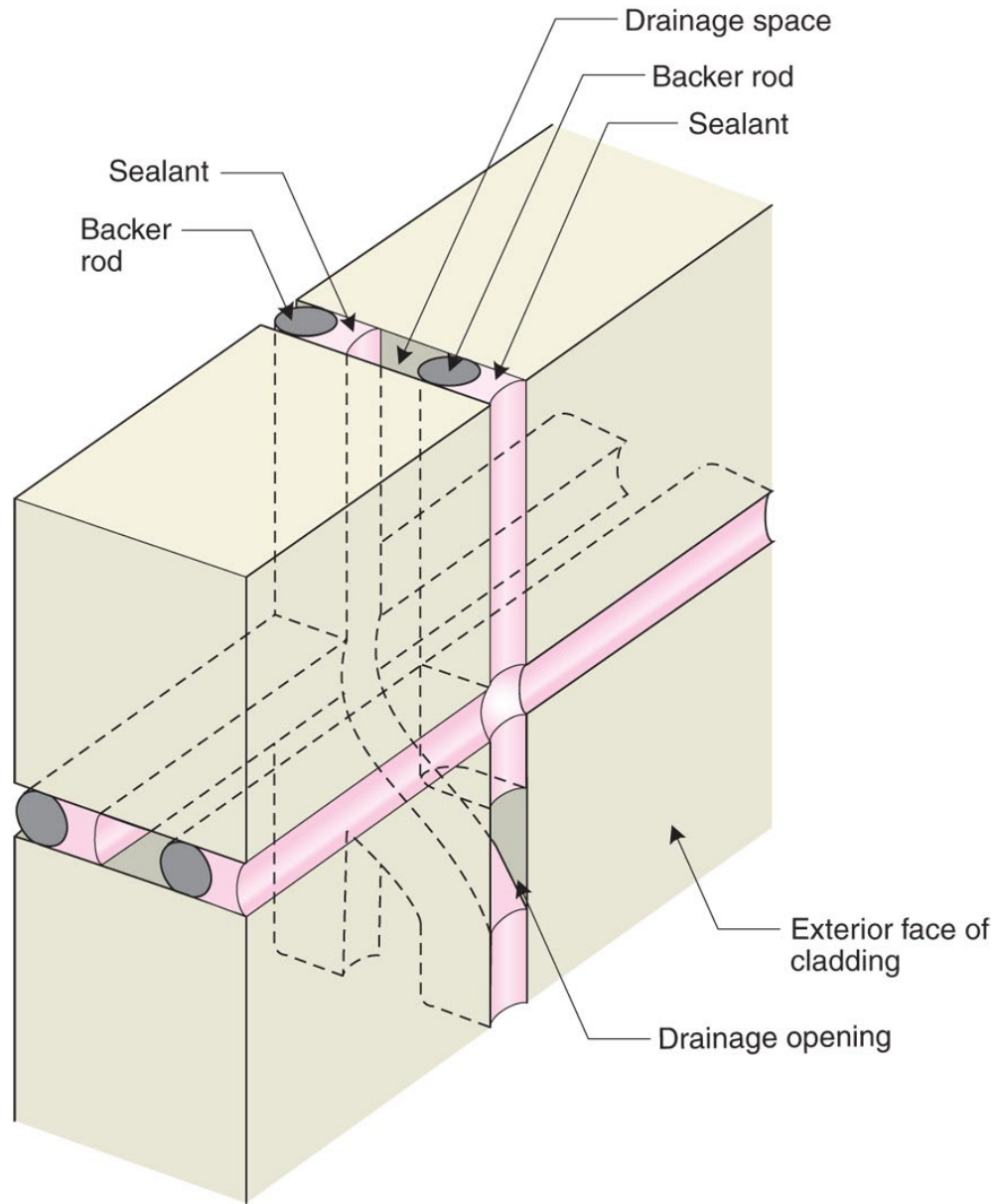


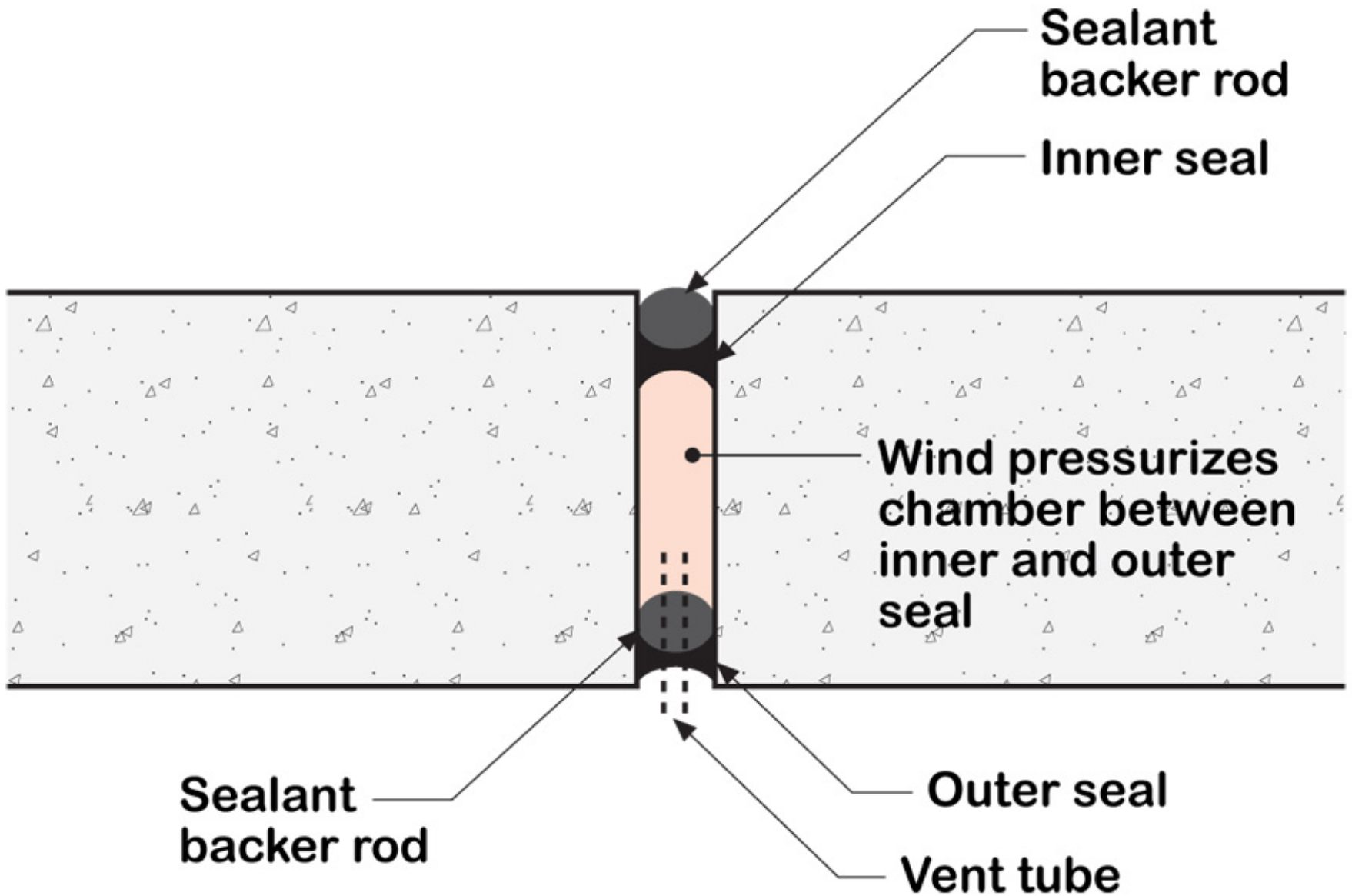
Joints....Should Be “Two-Stage” Joints









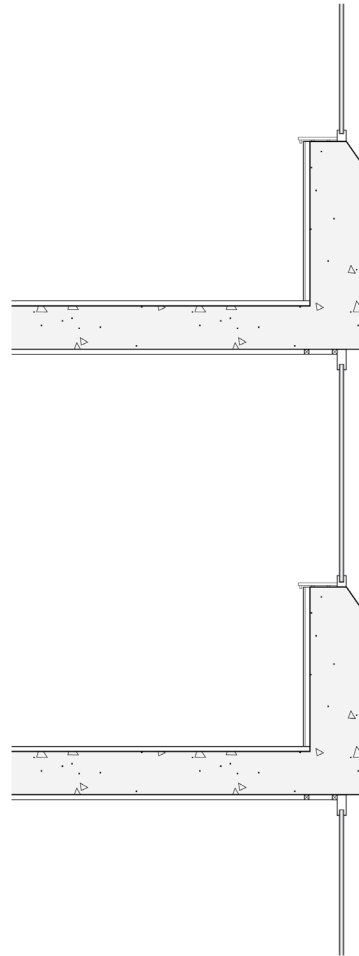


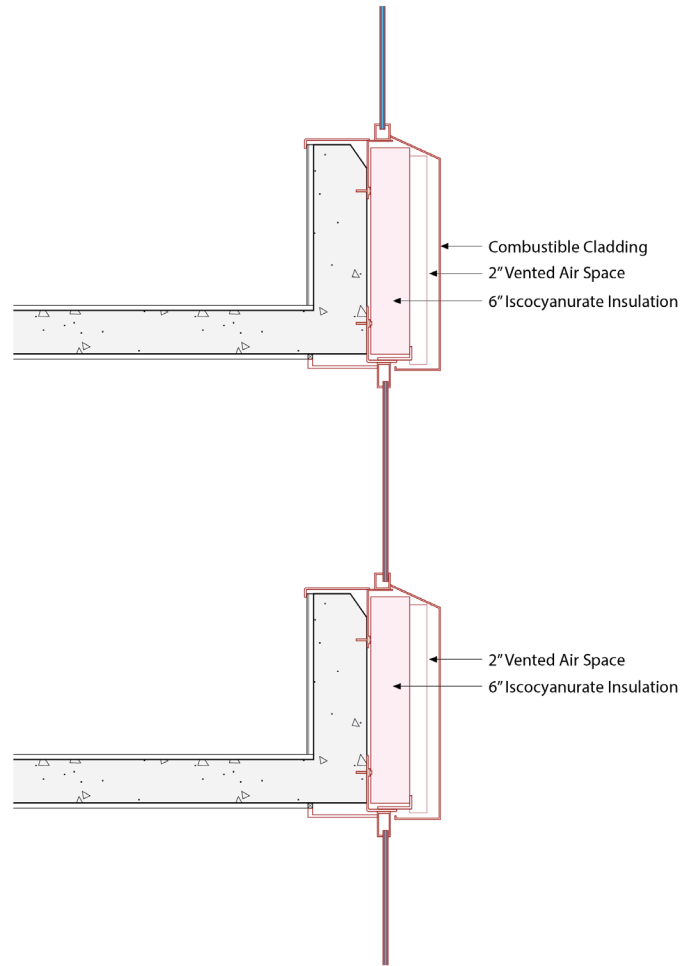
Danger Will Robinson...Danger...









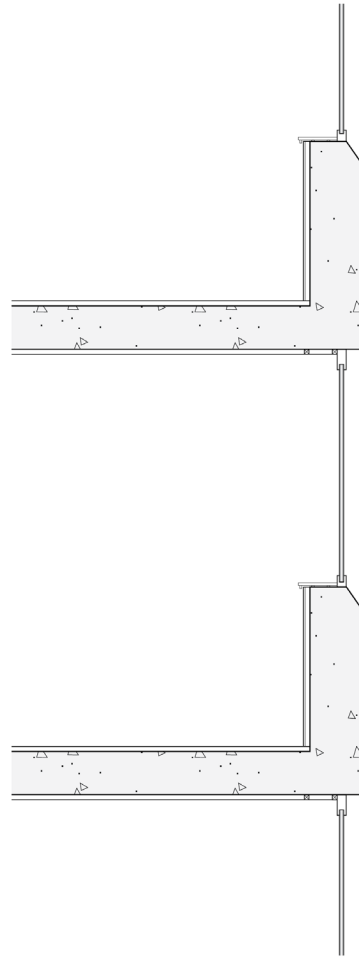
















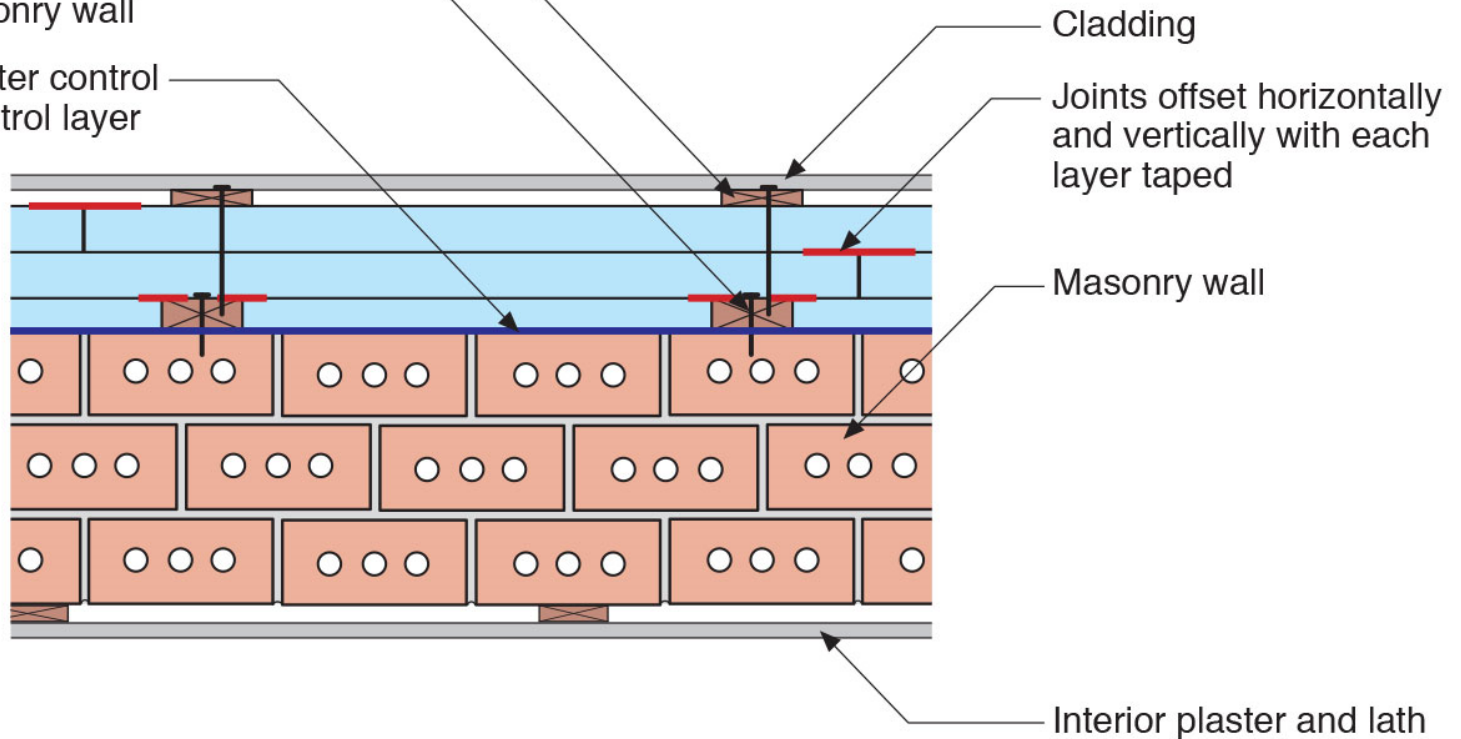




1x4 wood furring attached through rigid insulation to 2x4 wood furring

2x4 wood furring mechanically attached to masonry wall

Fluid-applied water control layer and air control layer



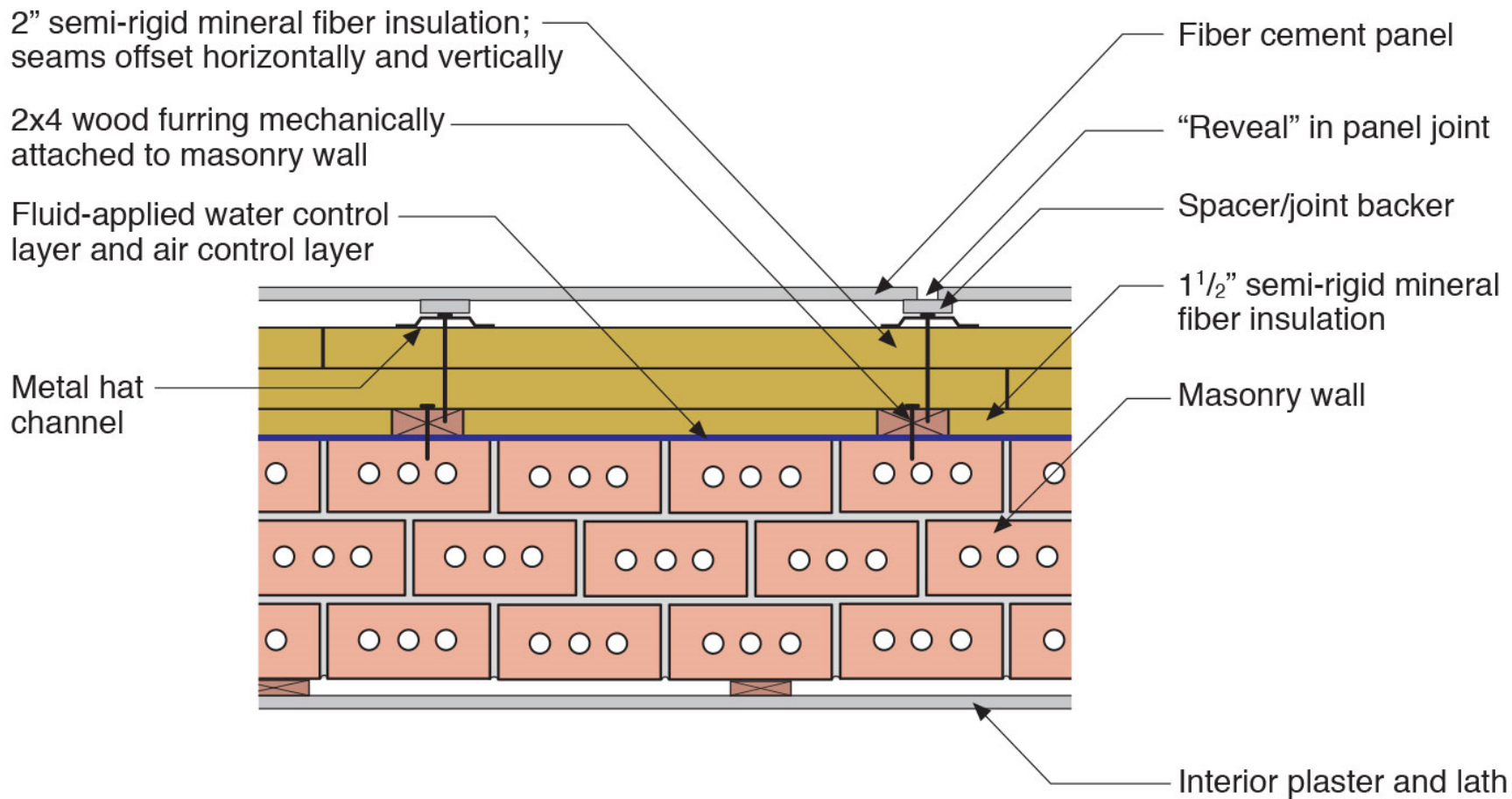
Cladding

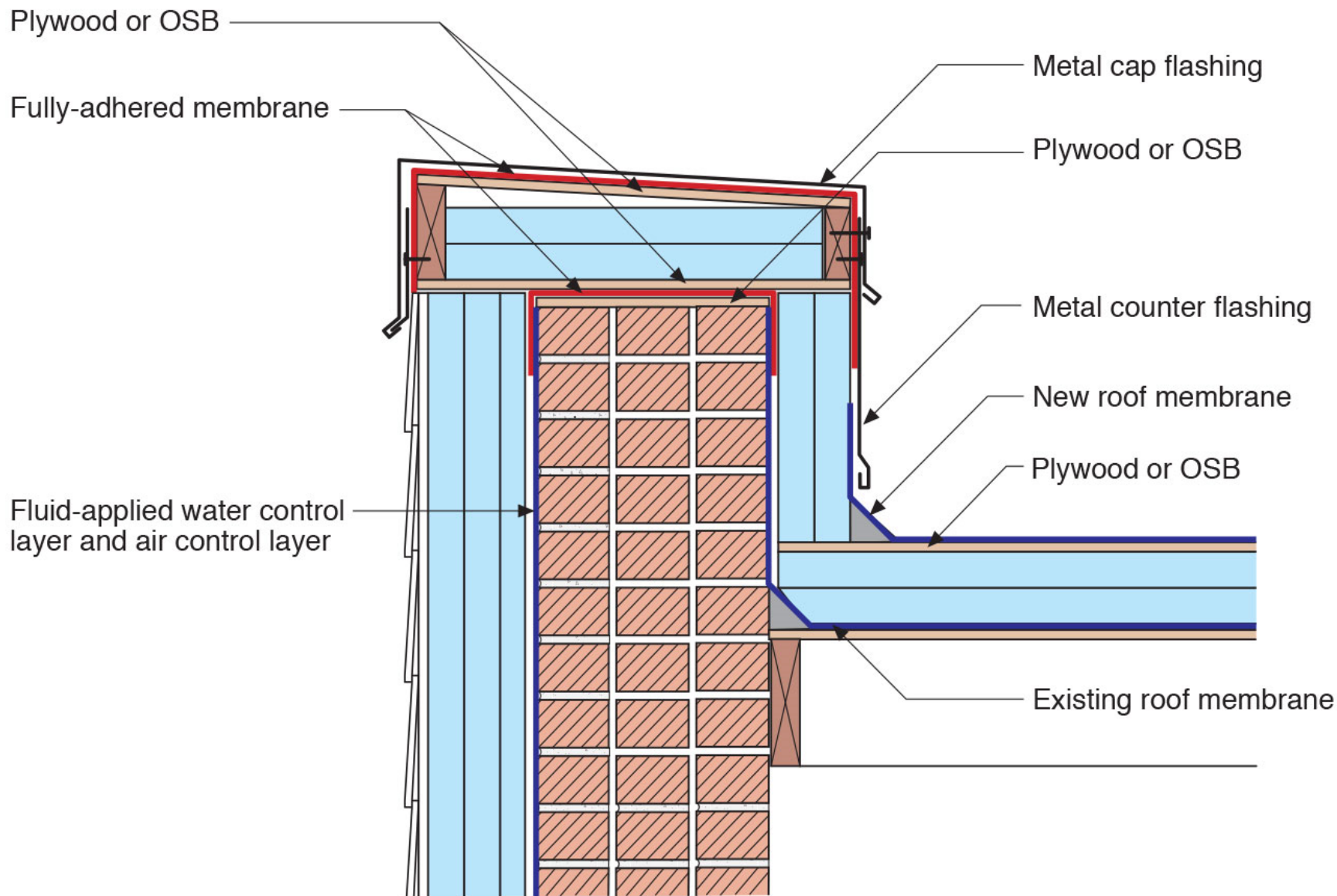
Joints offset horizontally and vertically with each layer taped

Masonry wall

Interior plaster and lath











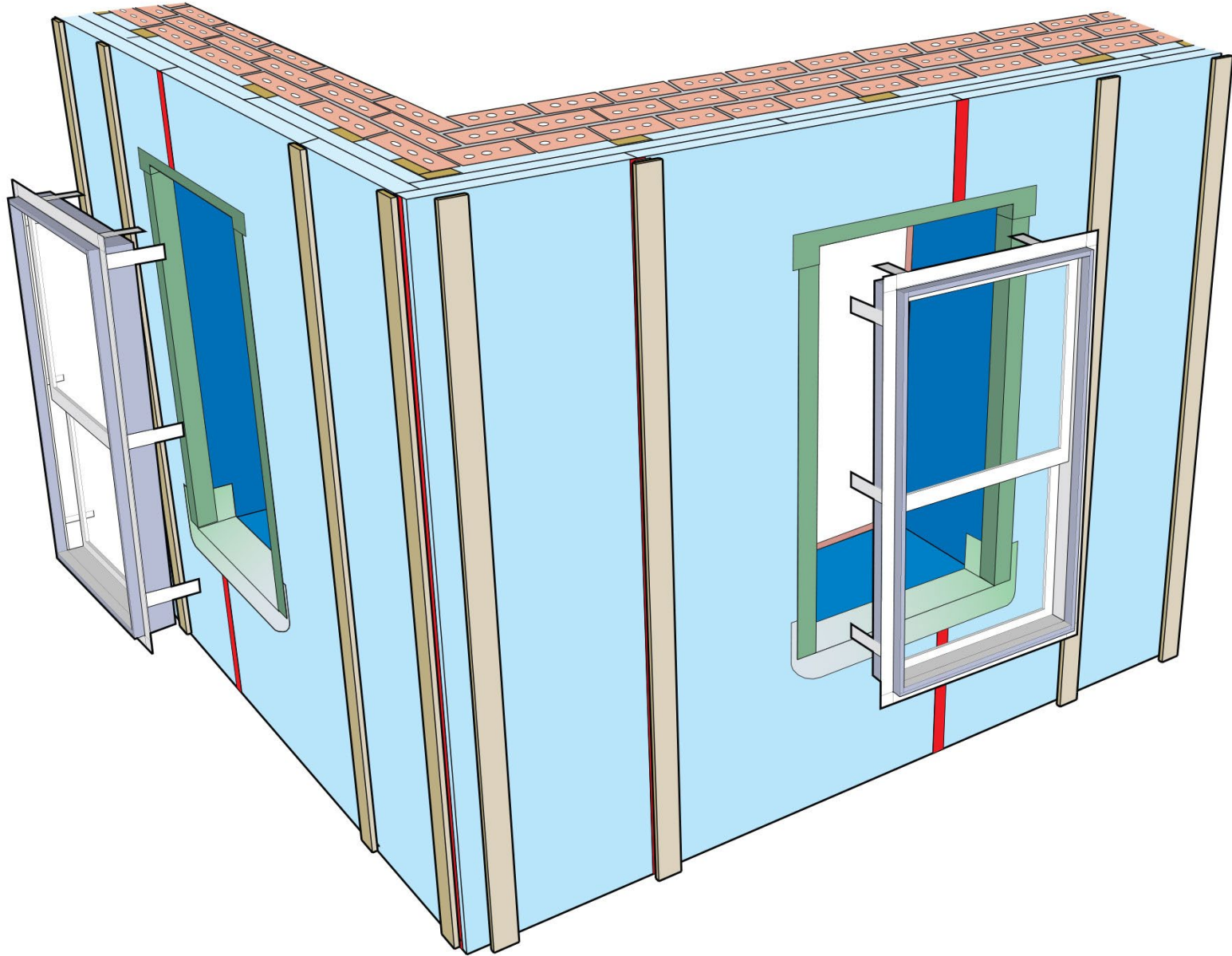




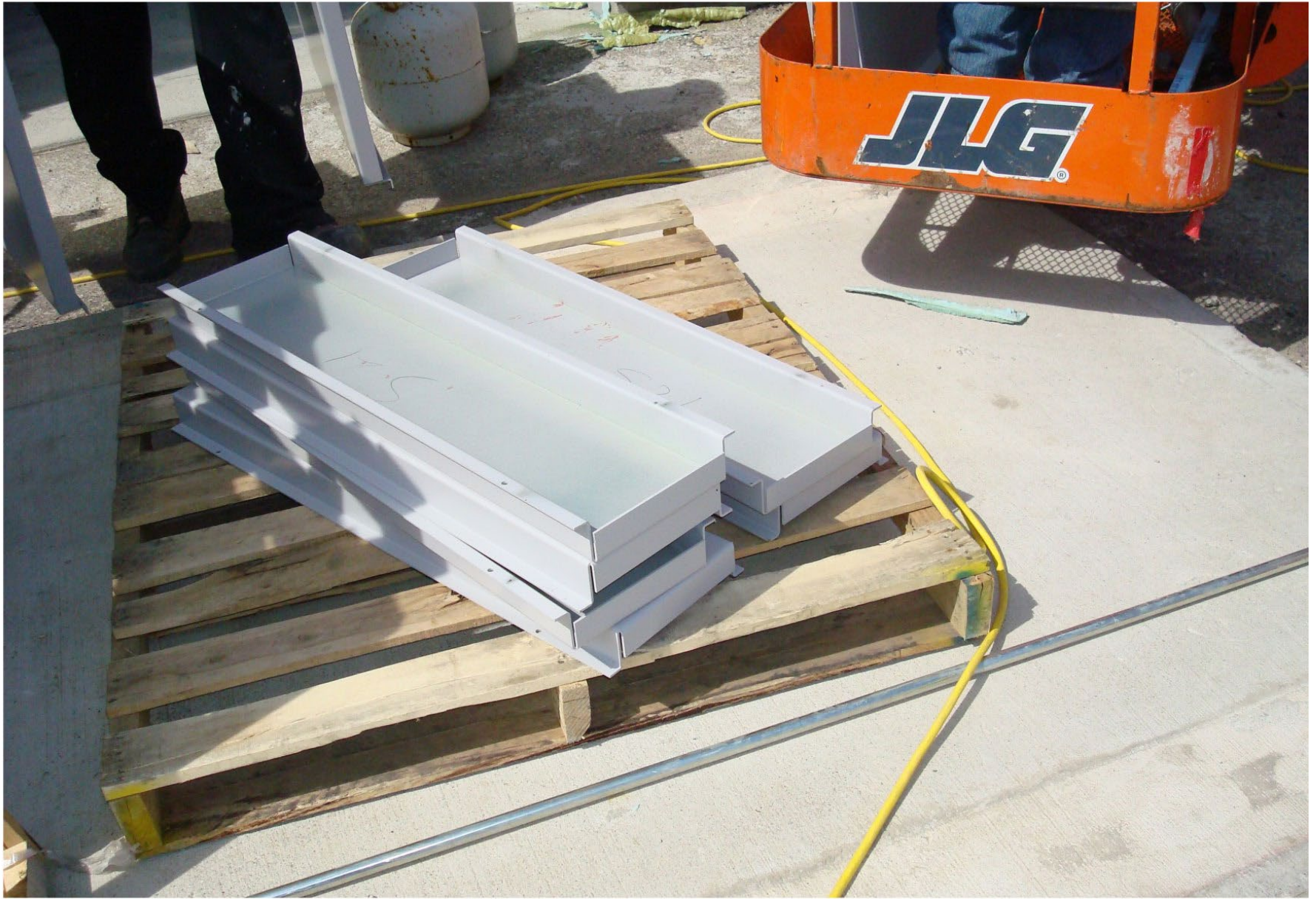


















Mechanical Systems

Mechanical Systems

Cooling System To Make It Cold

Mechanical Systems

Cooling System To Make It Cold

Dehumidification System To Make It Dry

Mechanical Systems

Cooling System To Make It Cold

Dehumidification System To Make It Dry

Heating System To Make It Warm

Mechanical Systems

Cooling System To Make It Cold

Dehumidification System To Make It Dry

Heating System To Make It Warm

Energy Recovery System To Keep It Cold
and Dry and Warm and Comfortable

Mechanical Systems

Cooling System To Make It Cold

Dehumidification System To Make It Dry

Heating System To Make It Warm

Energy Recovery System To Keep It Cold
and Dry and Warm and Comfortable

Distribution System To Make It Uniform

Mechanical Systems

Cooling System To Make It Cold

Dehumidification System To Make It Dry

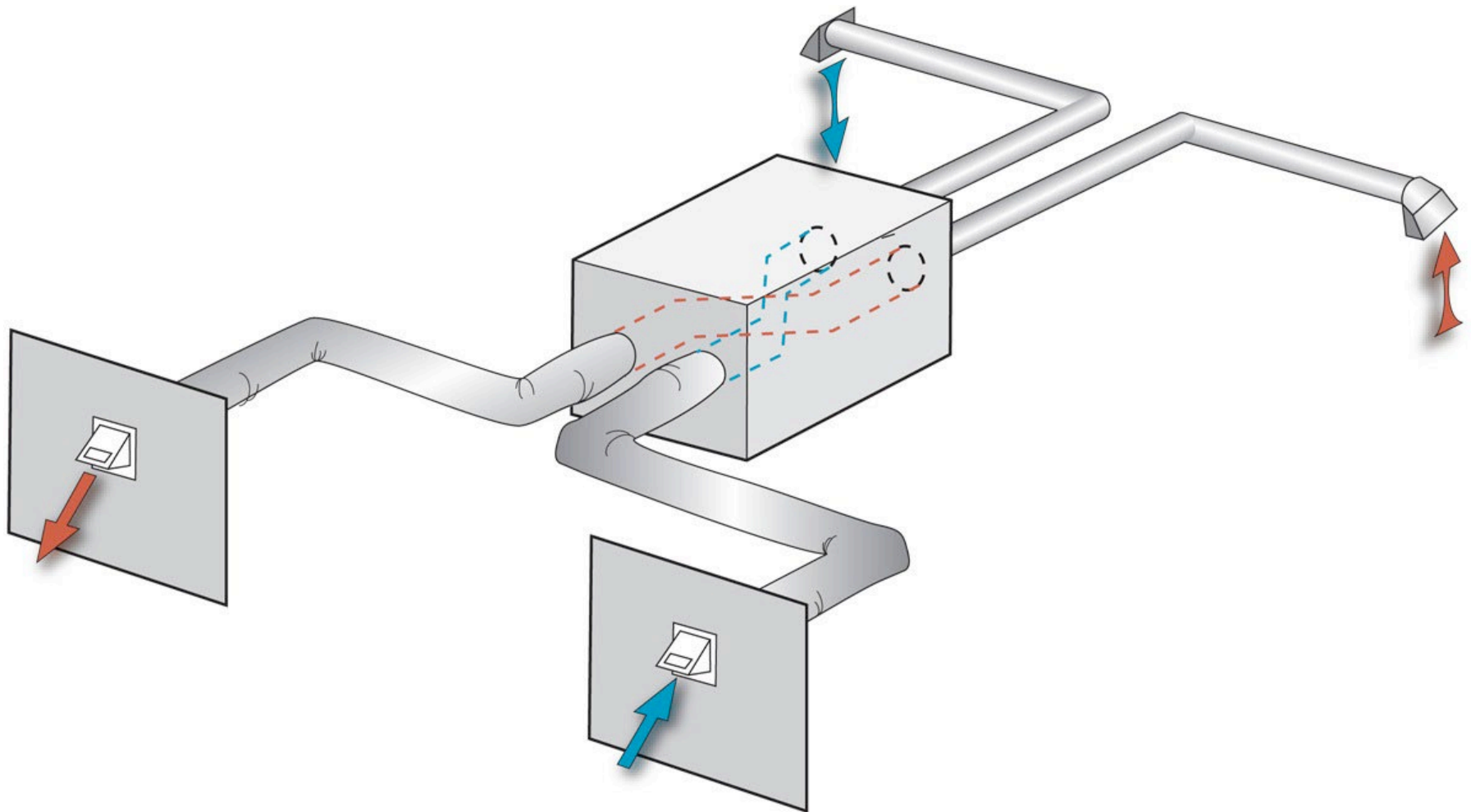
Heating System To Make It Warm

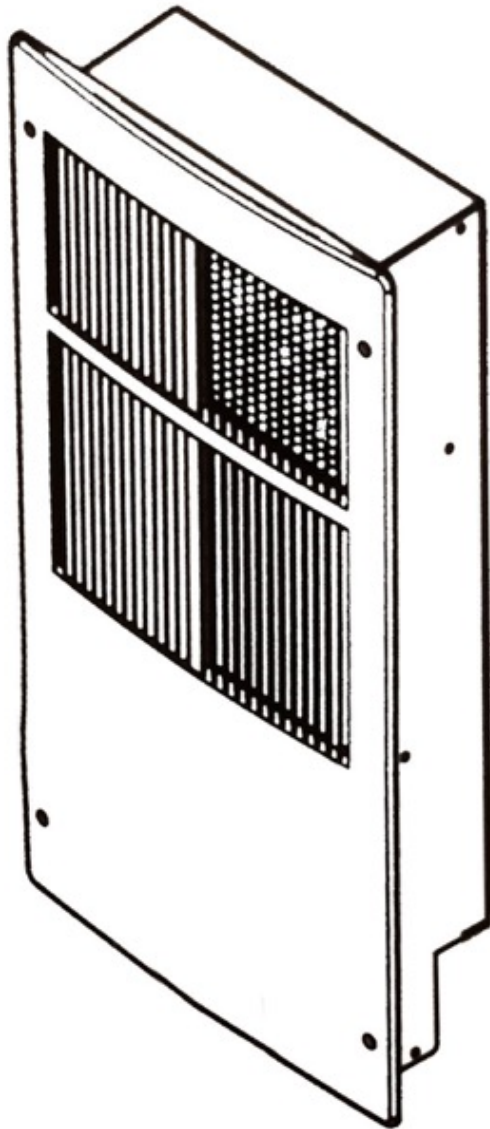
Energy Recovery System To Keep It Cold
and Dry and Warm and Comfortable

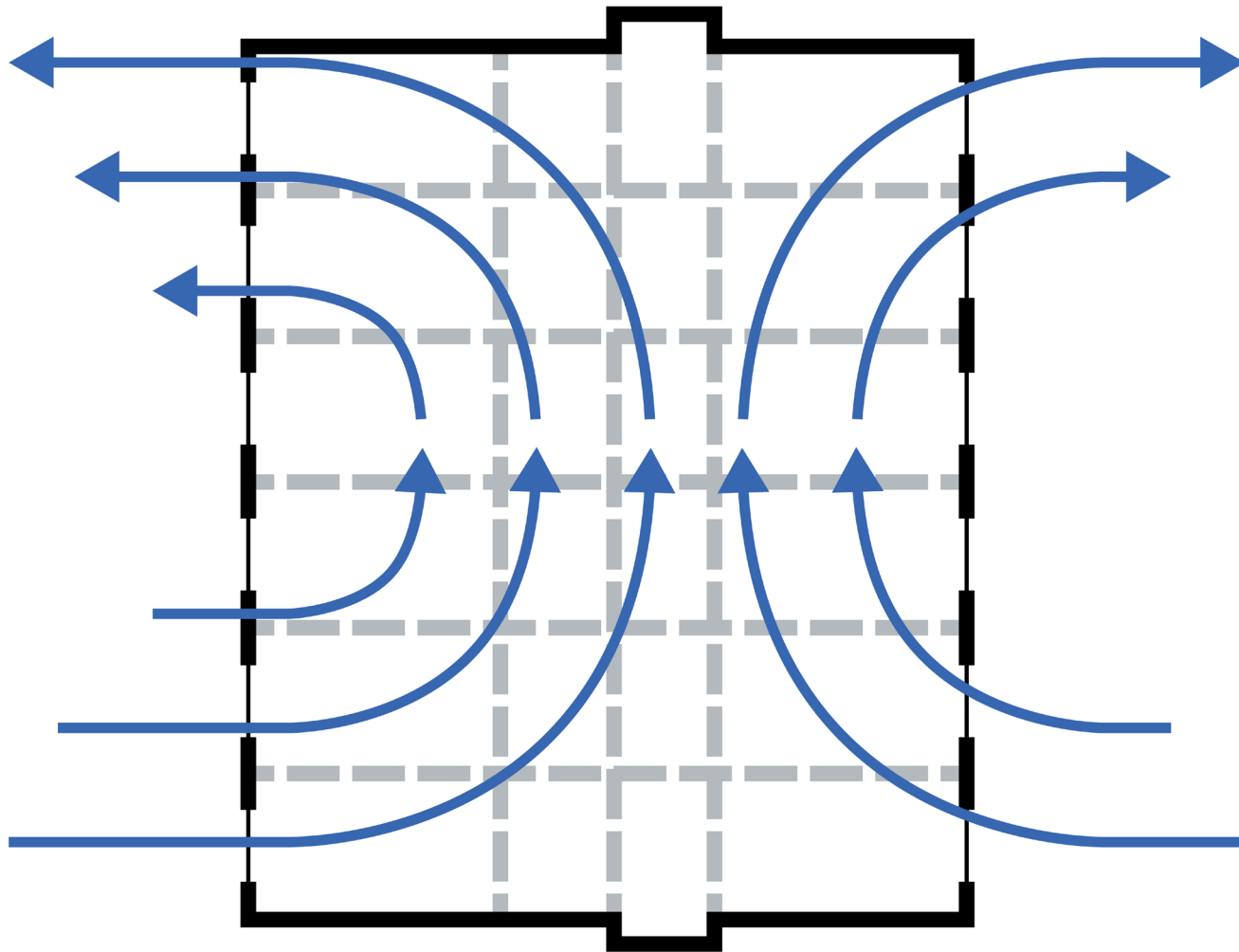
Distribution System To Make It Uniform

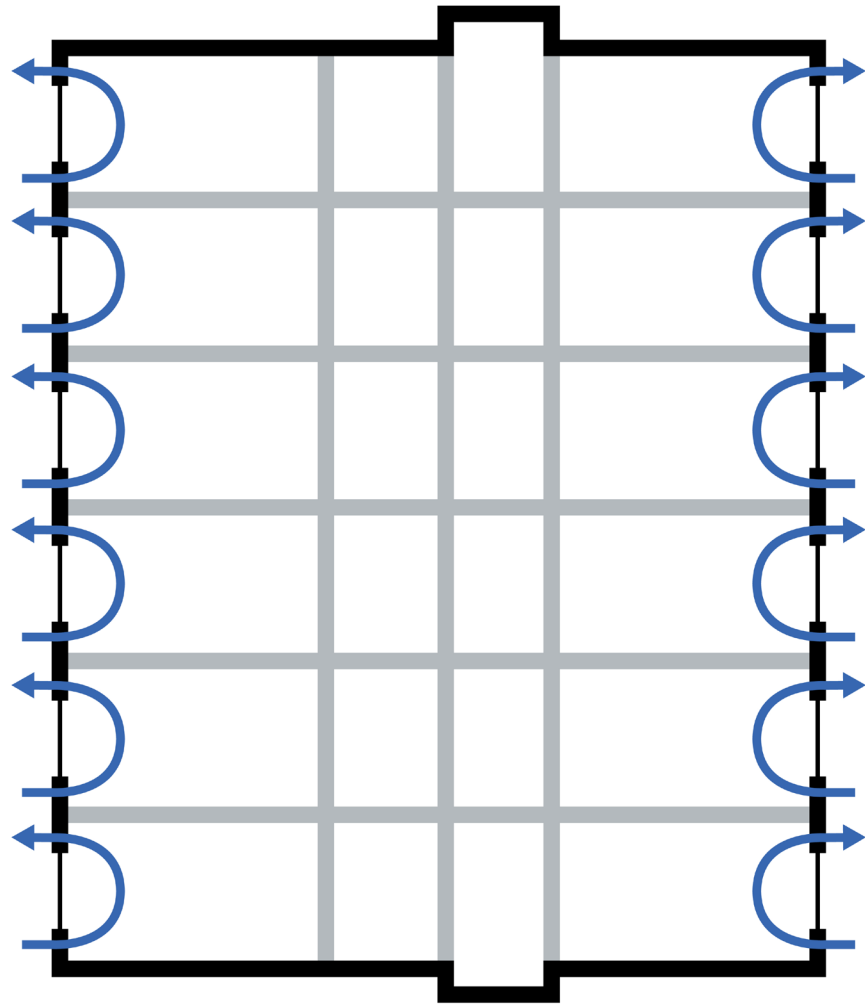
Range Hoods Are A Special Kind of Hell

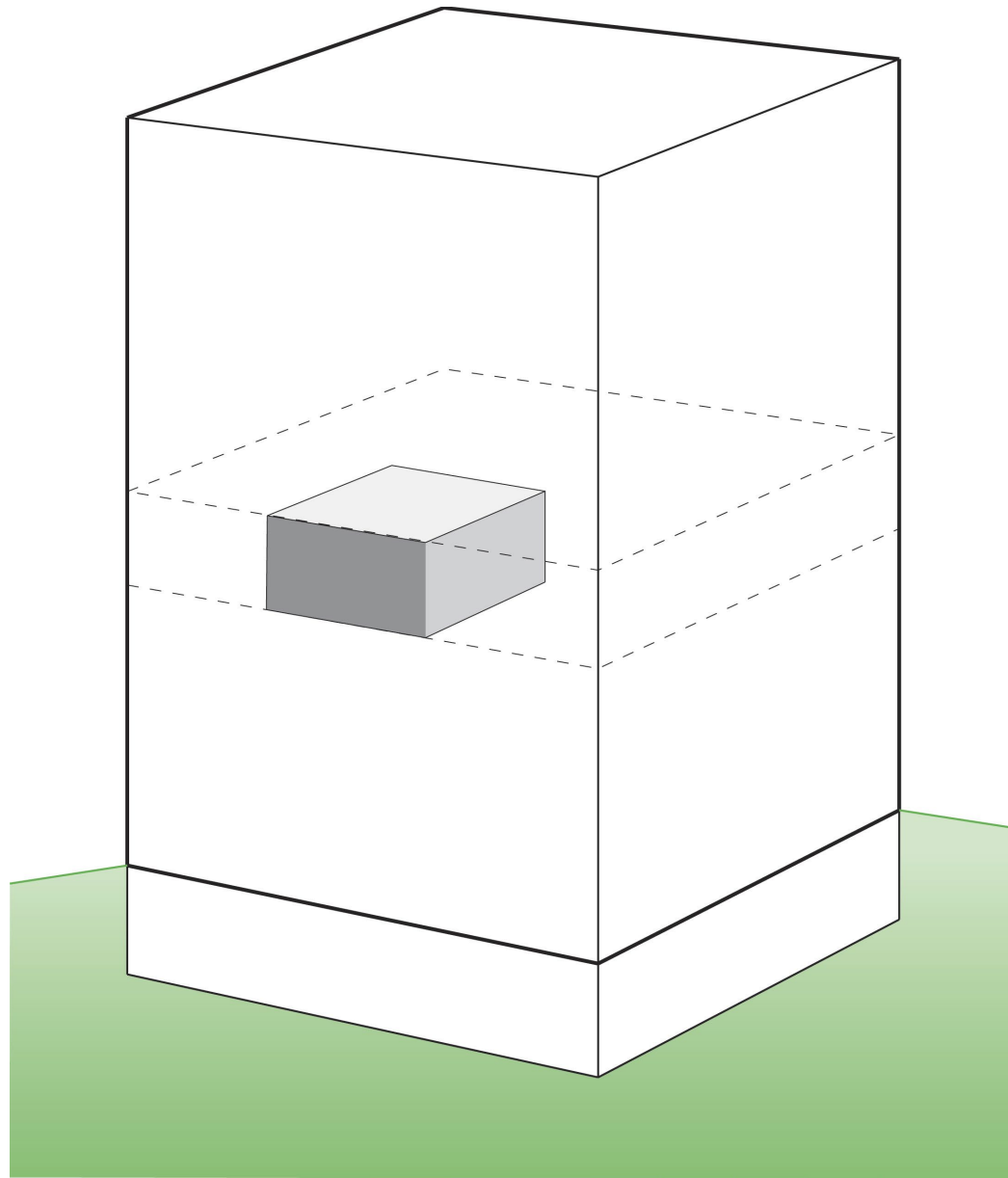
Don't Try to Combine Them.....

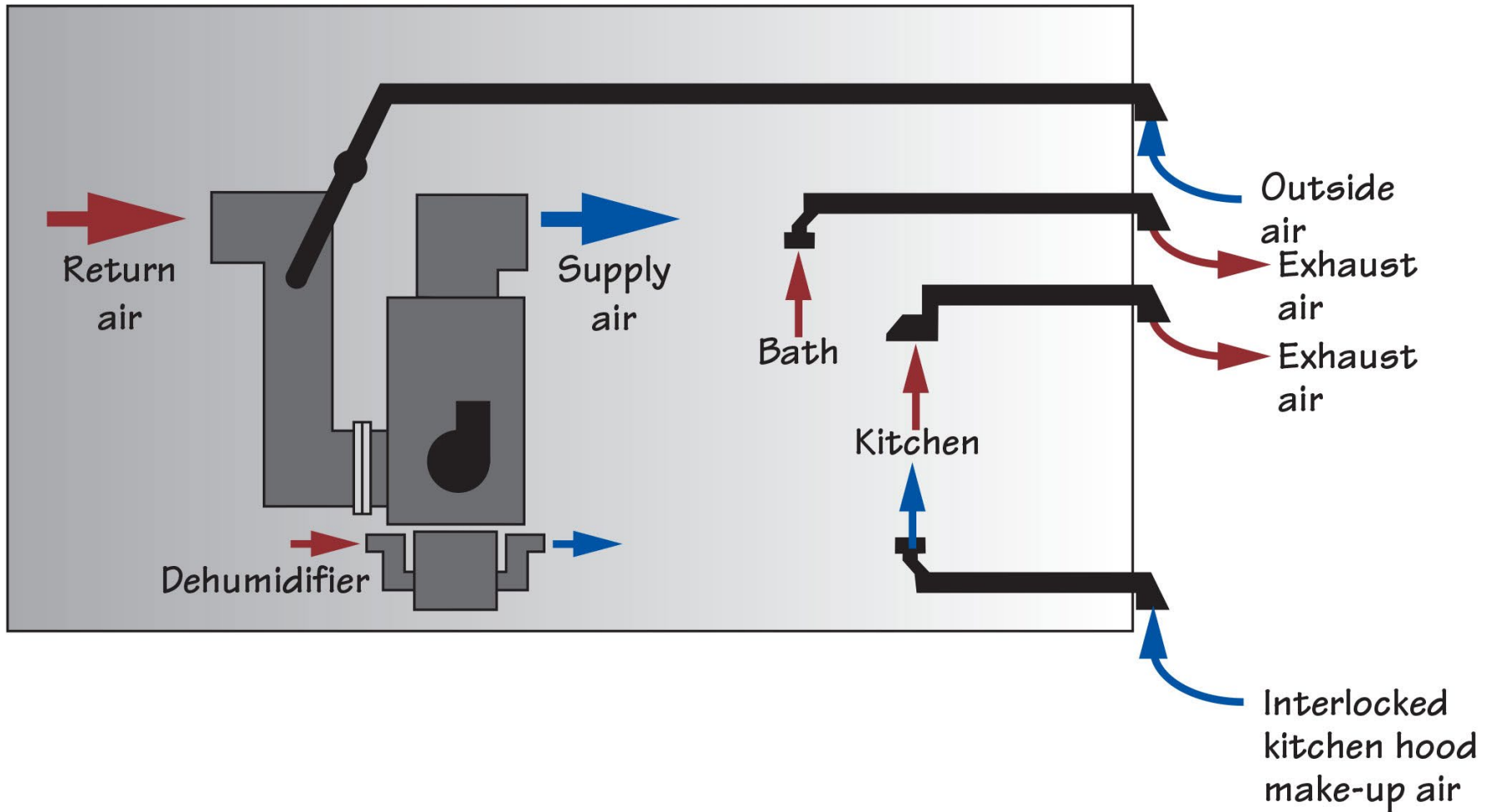


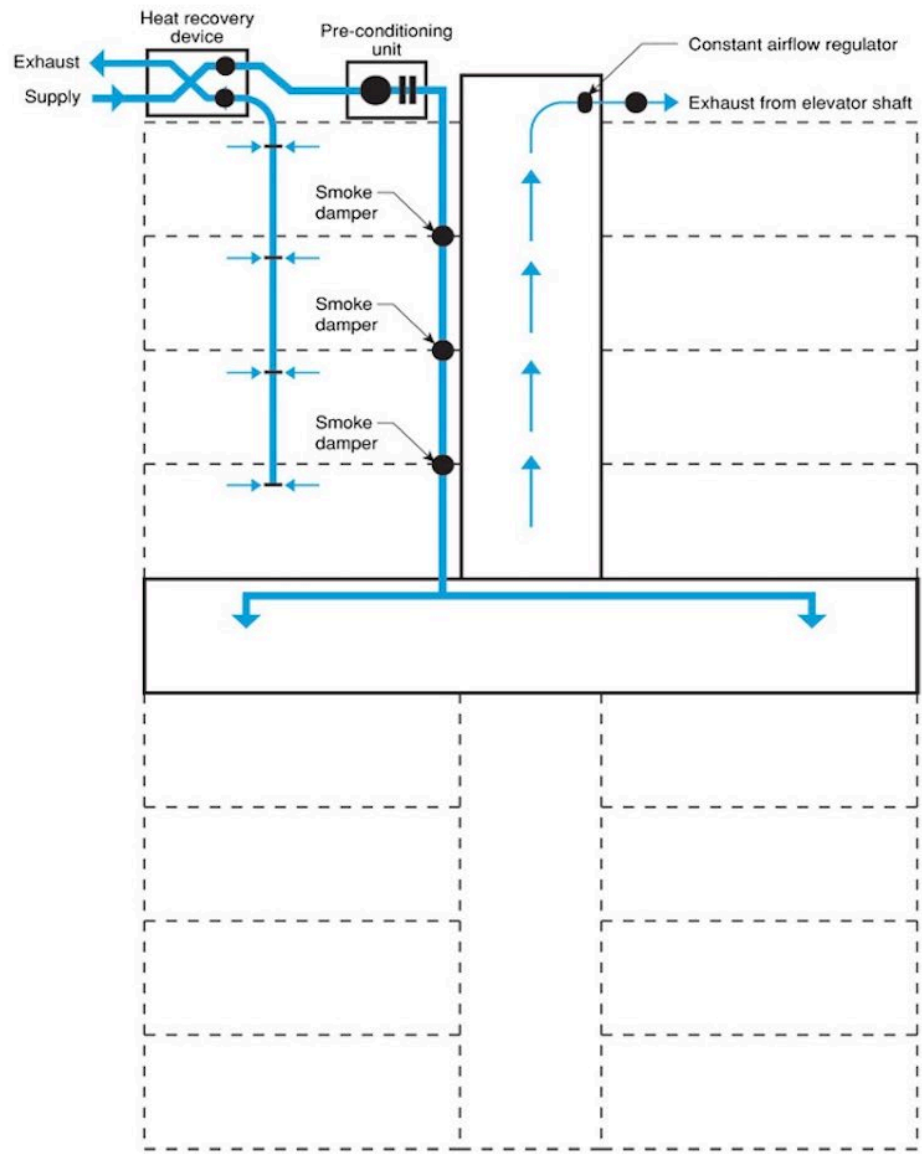












Over ventilation...The IAQ Cult

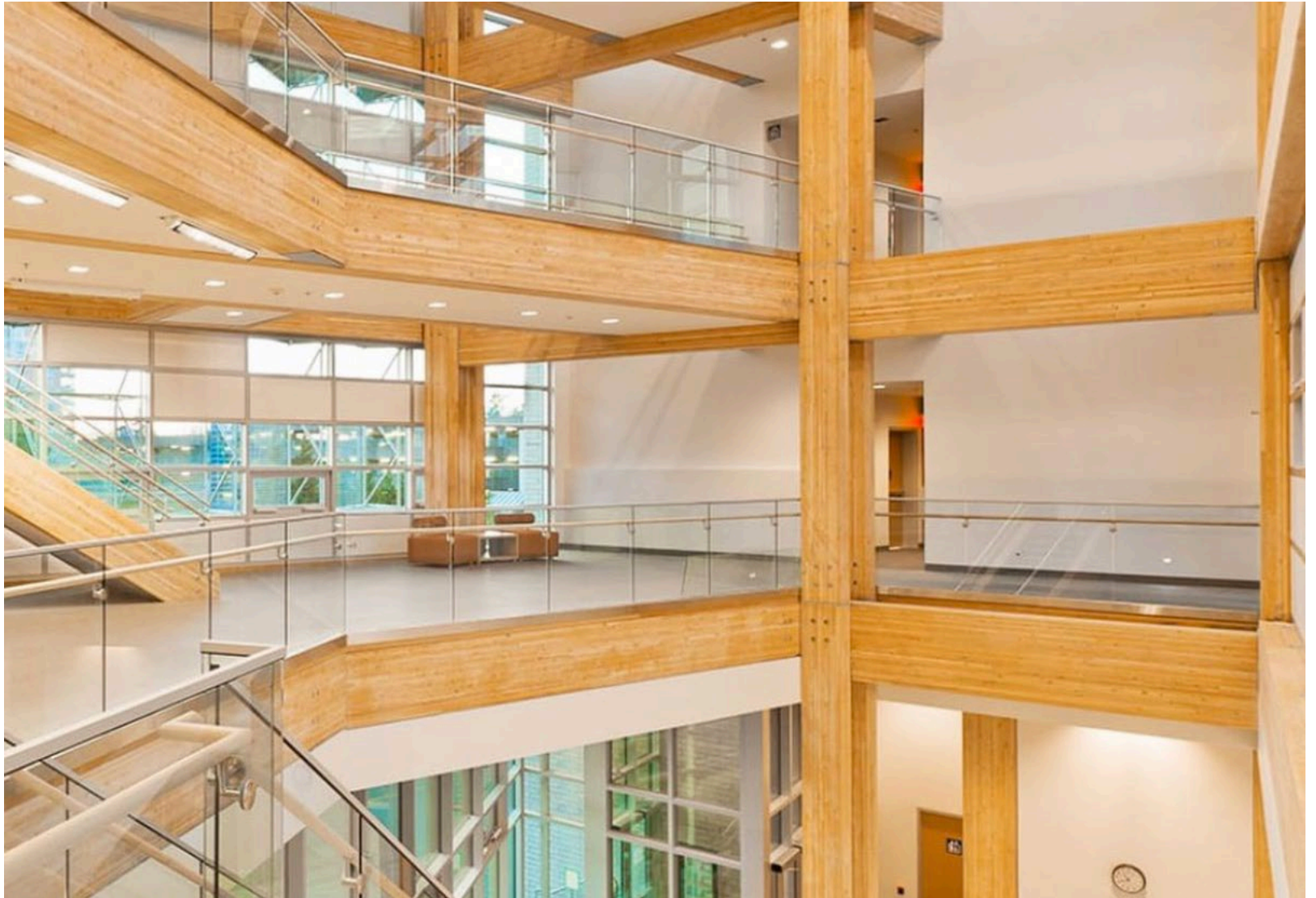
PV's...





Carbon...

Mass Timber







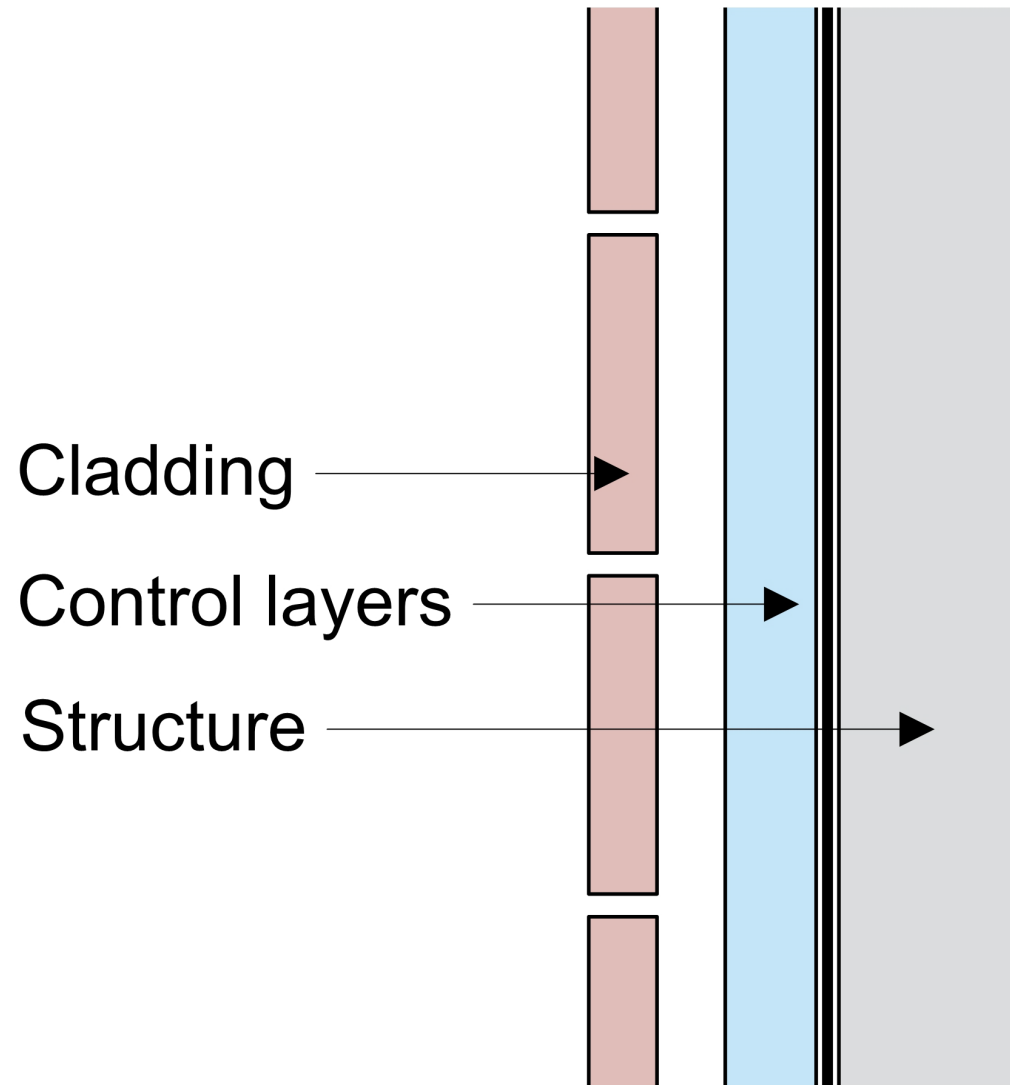
The Perfect Wall

Water Control Layer

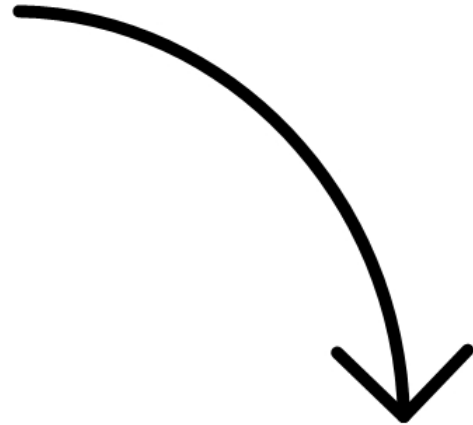
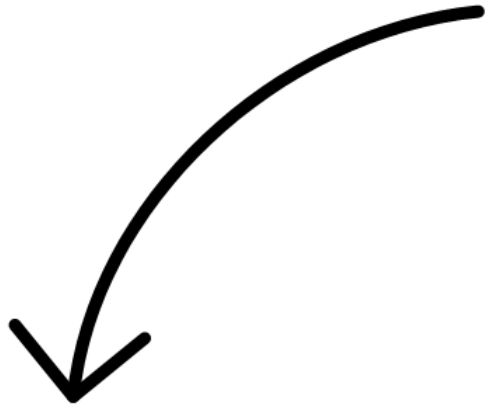
Air Control Layer

Vapor Control Layer

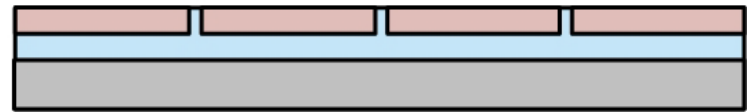
Thermal Control Layer



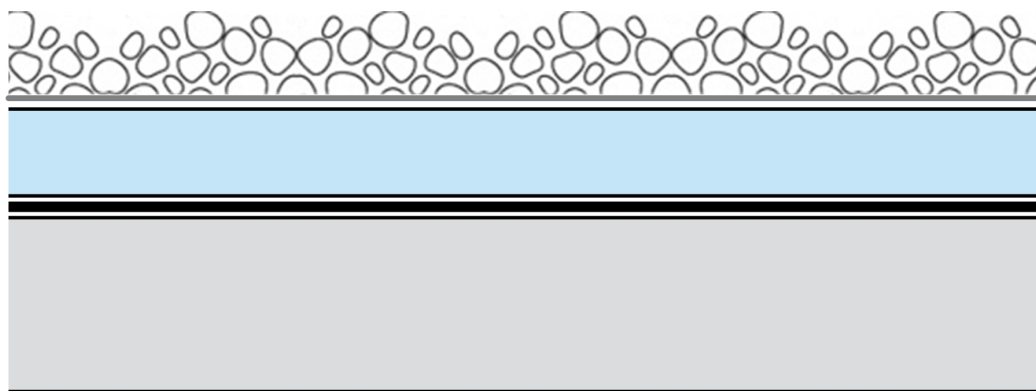
Wall



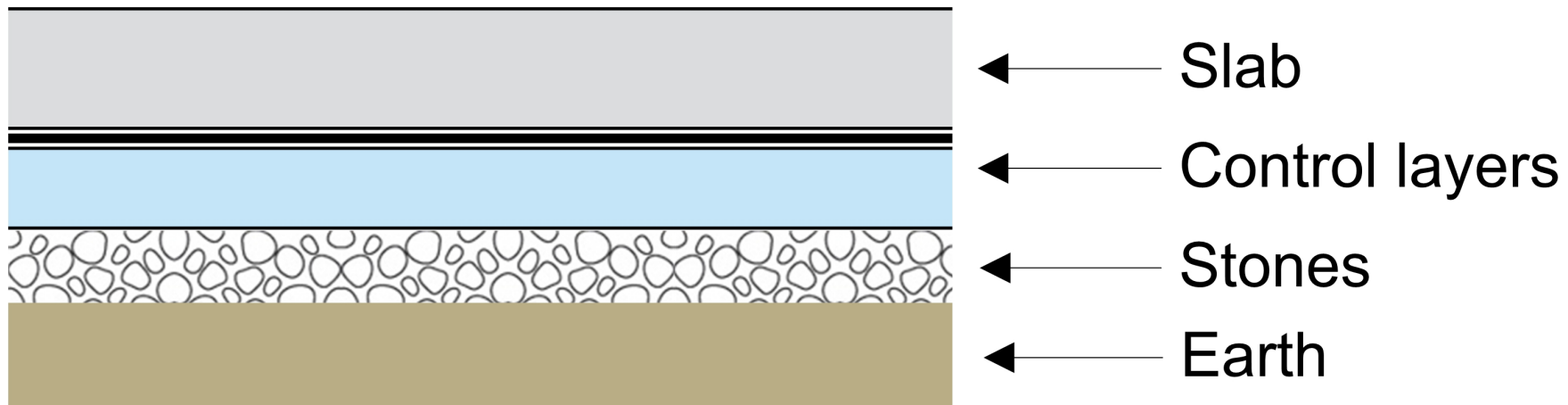
Slab

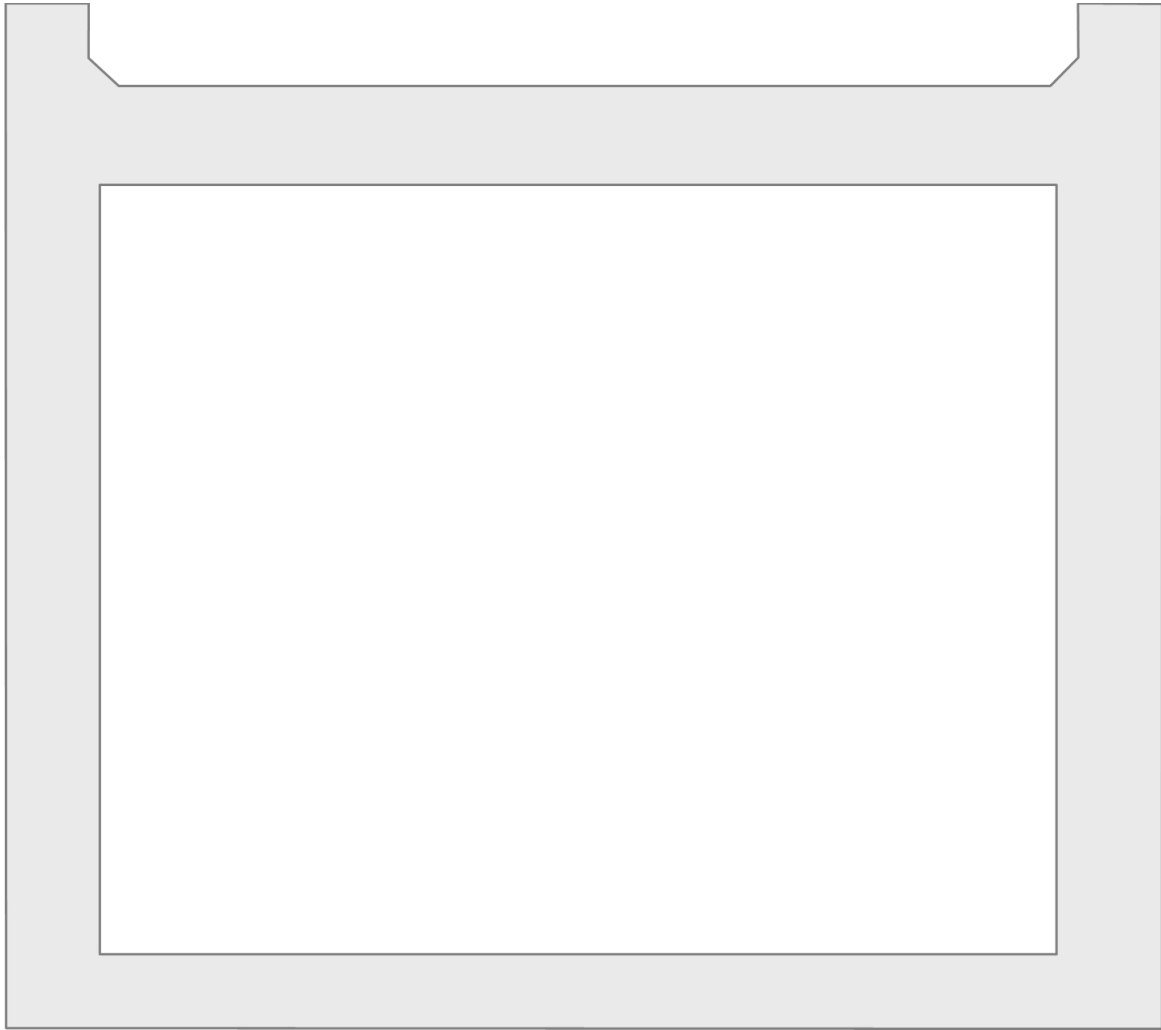


Roof

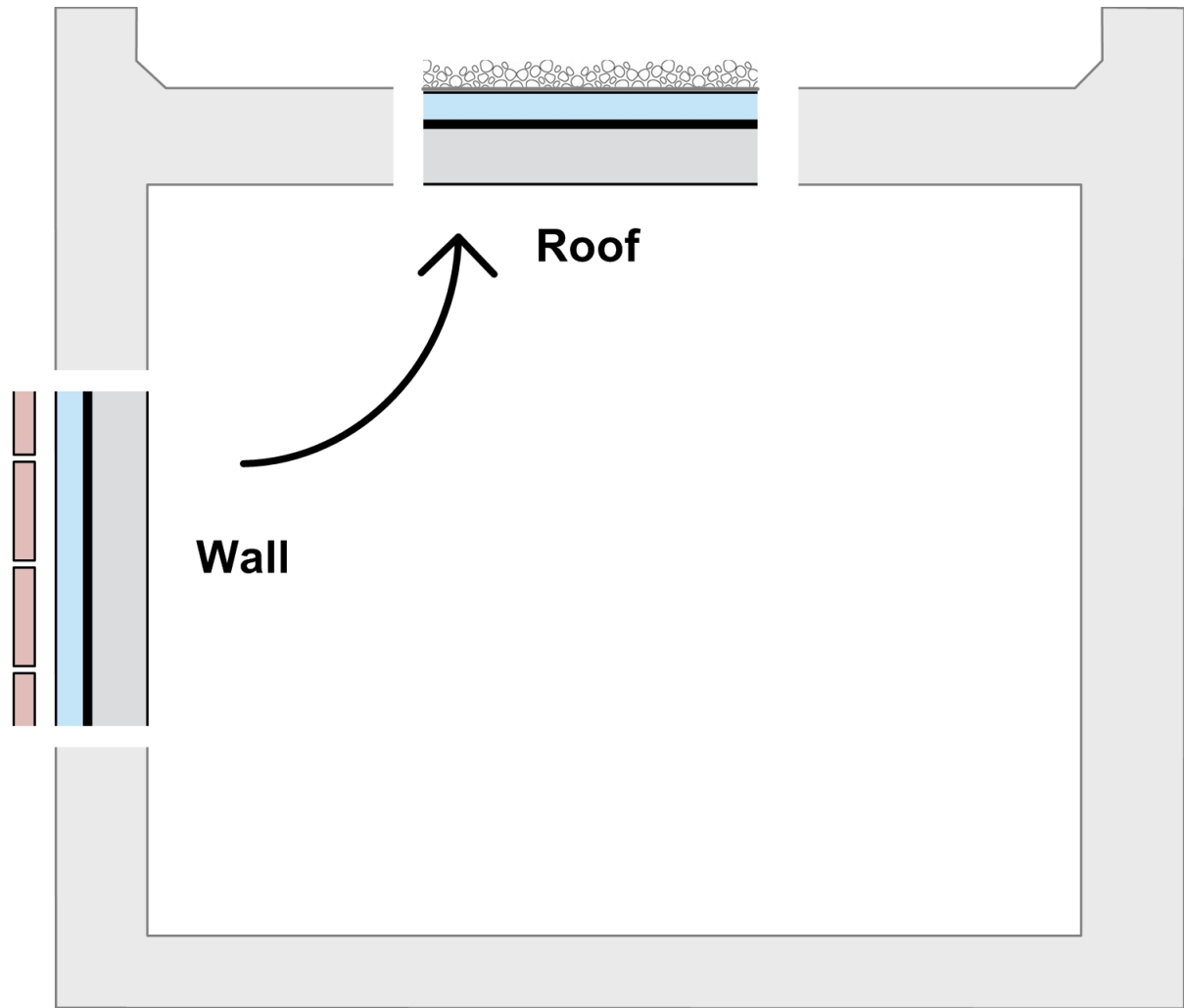


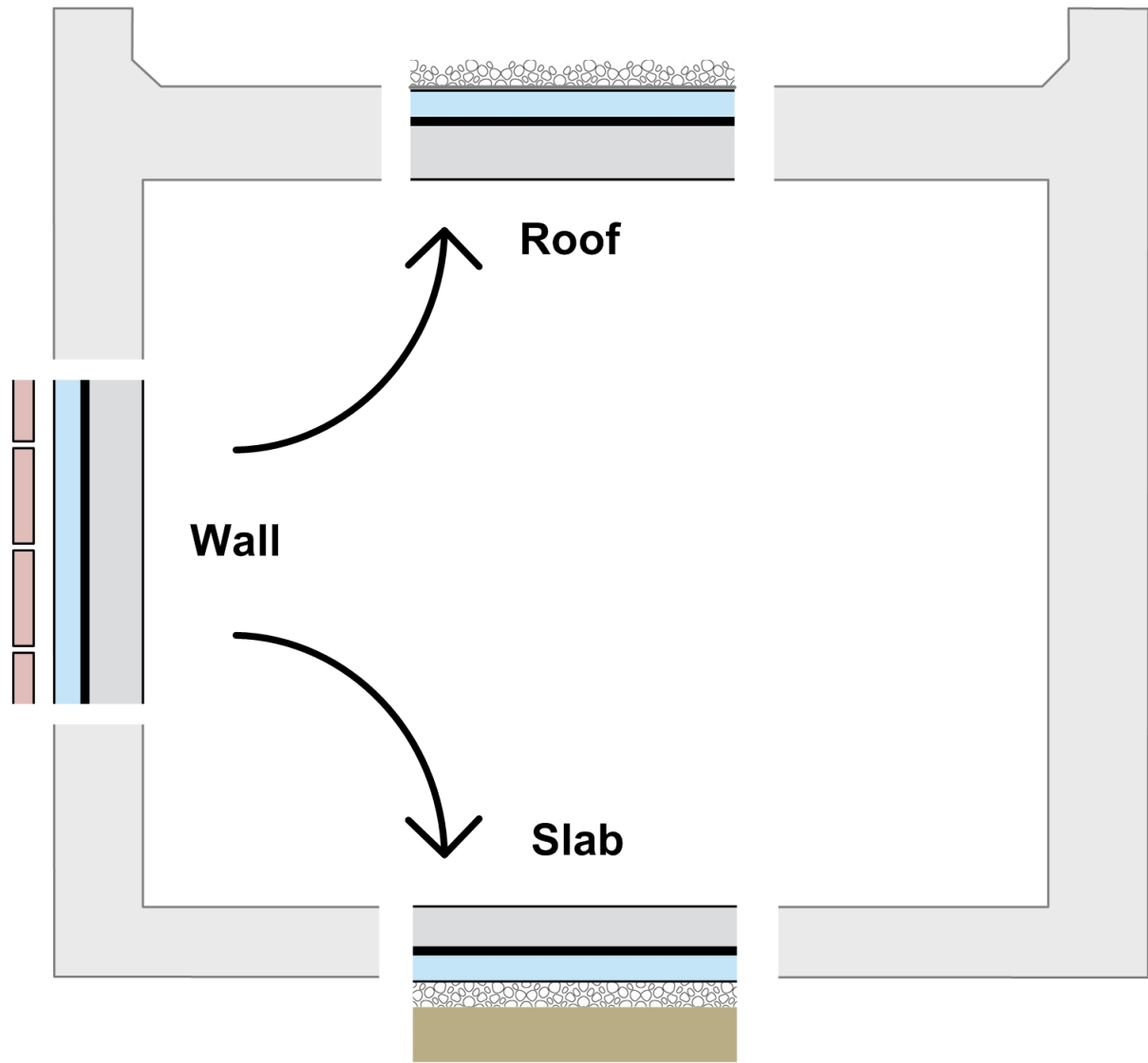
- ← Ballast
- ← Filter fabric
- ← Control layers
- ← Roof structure

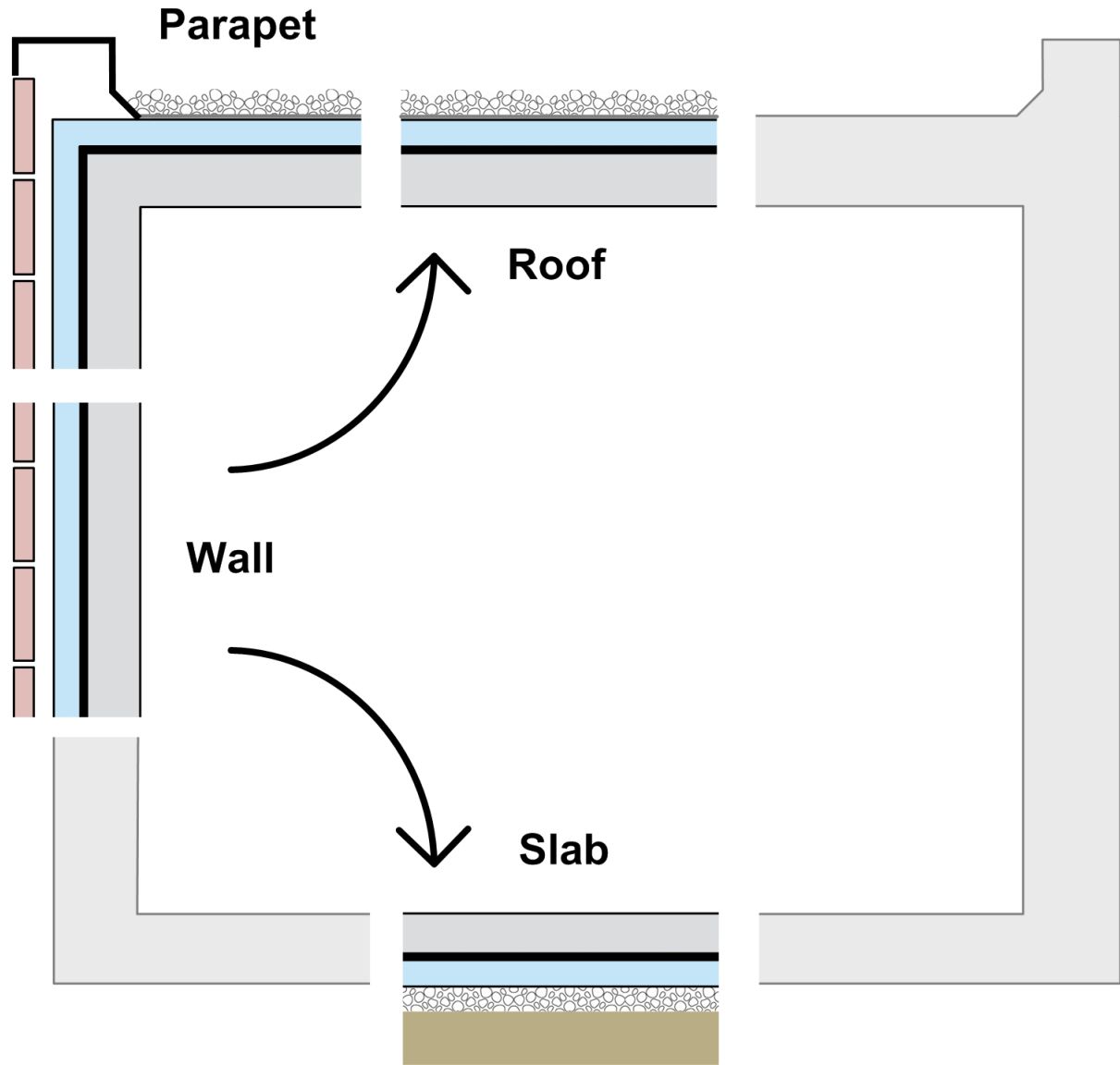


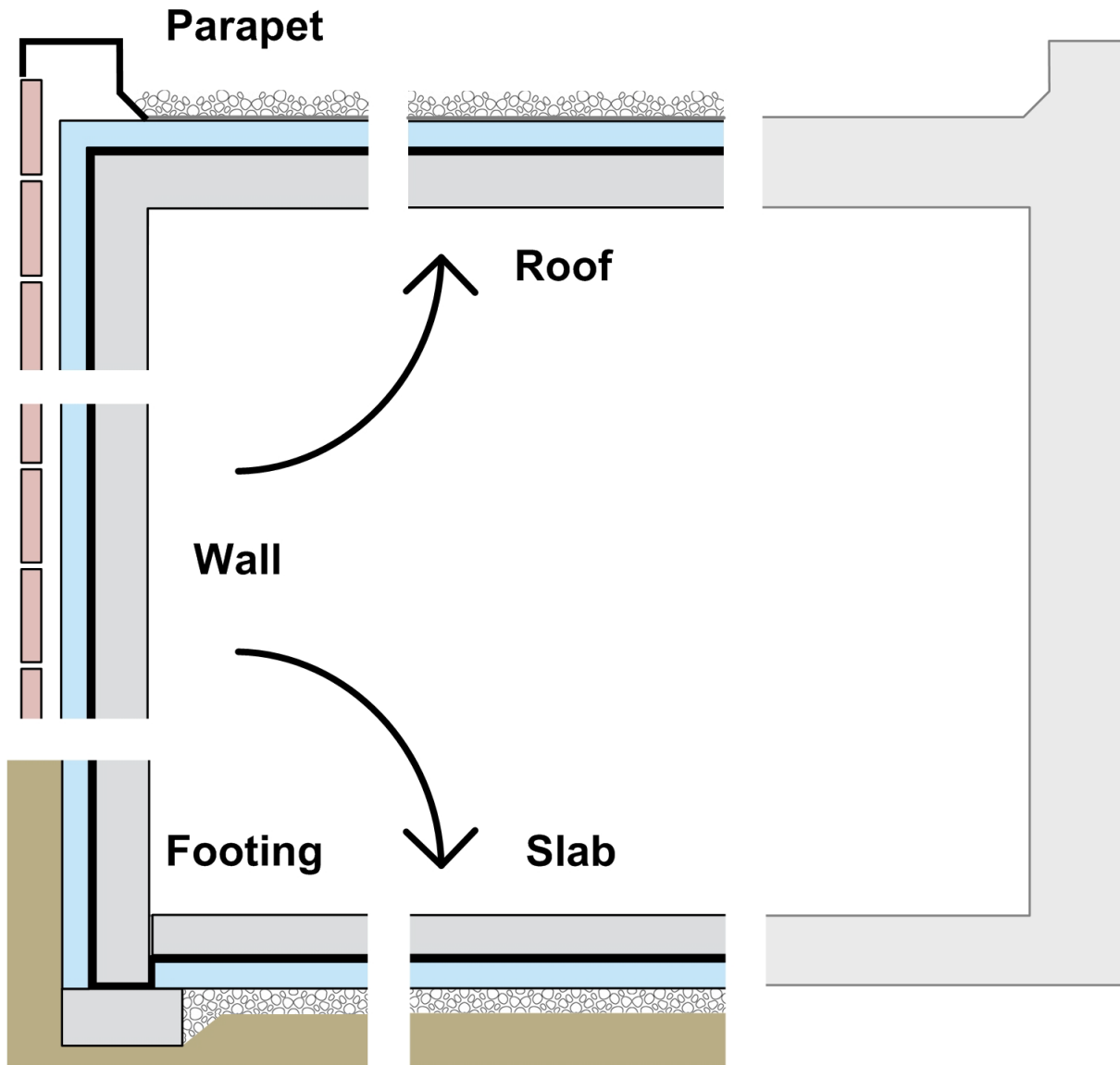


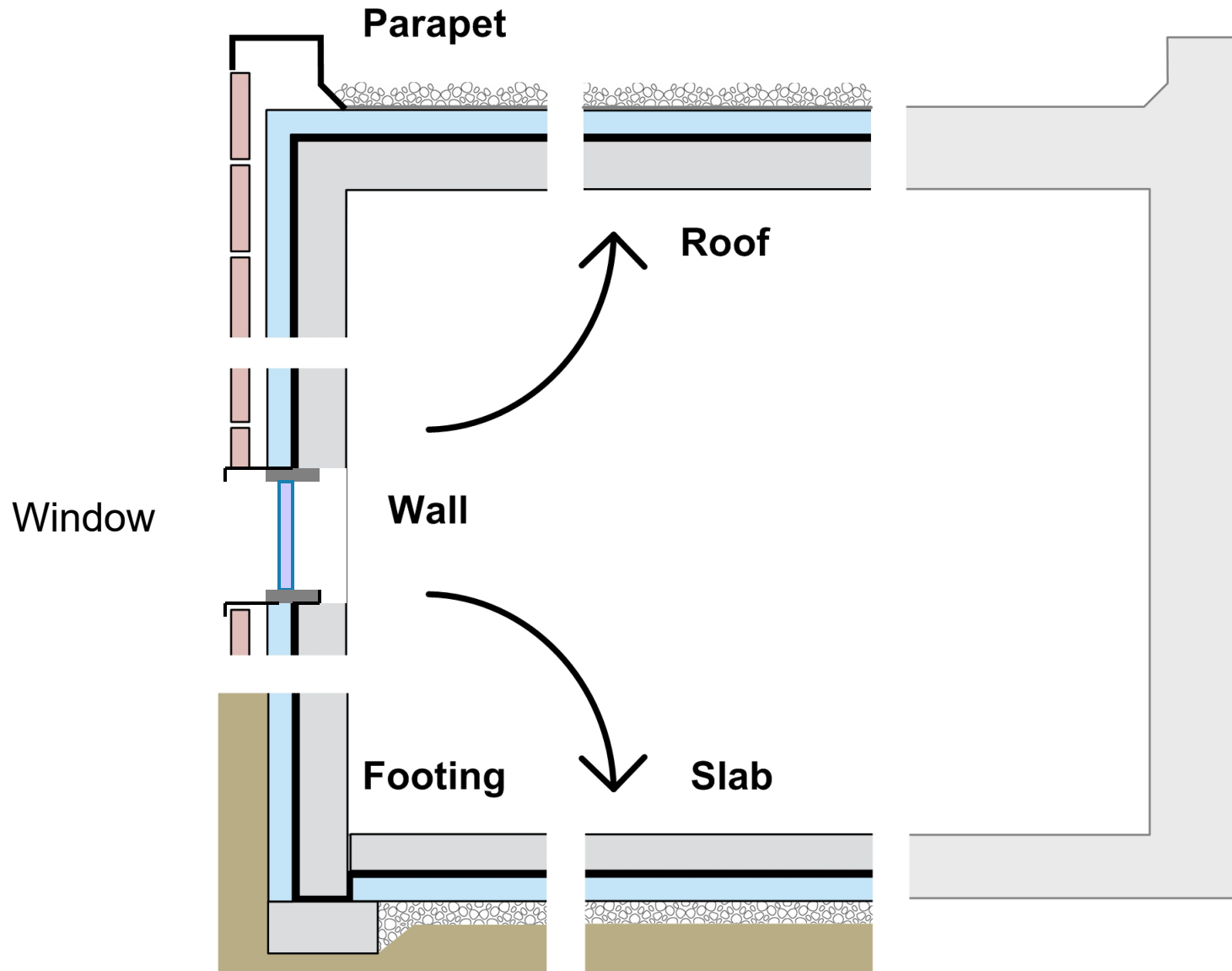


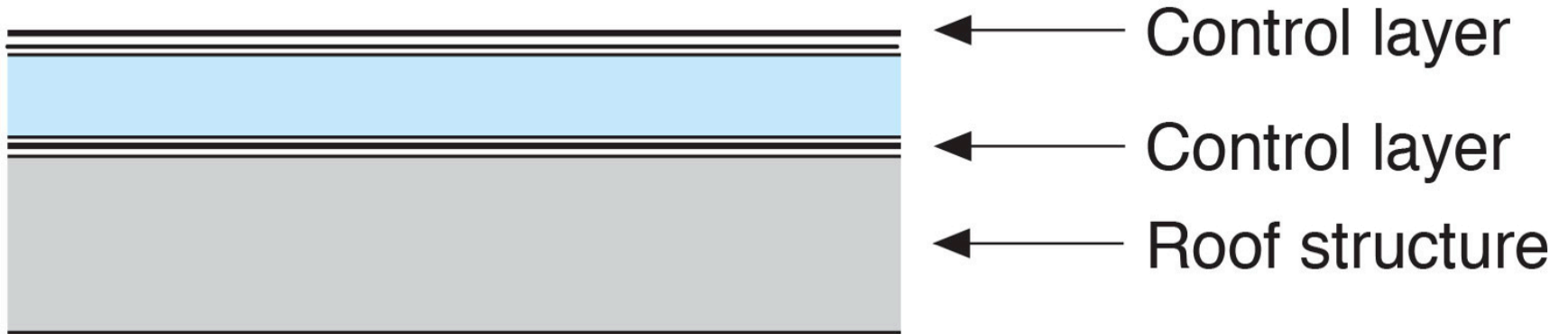


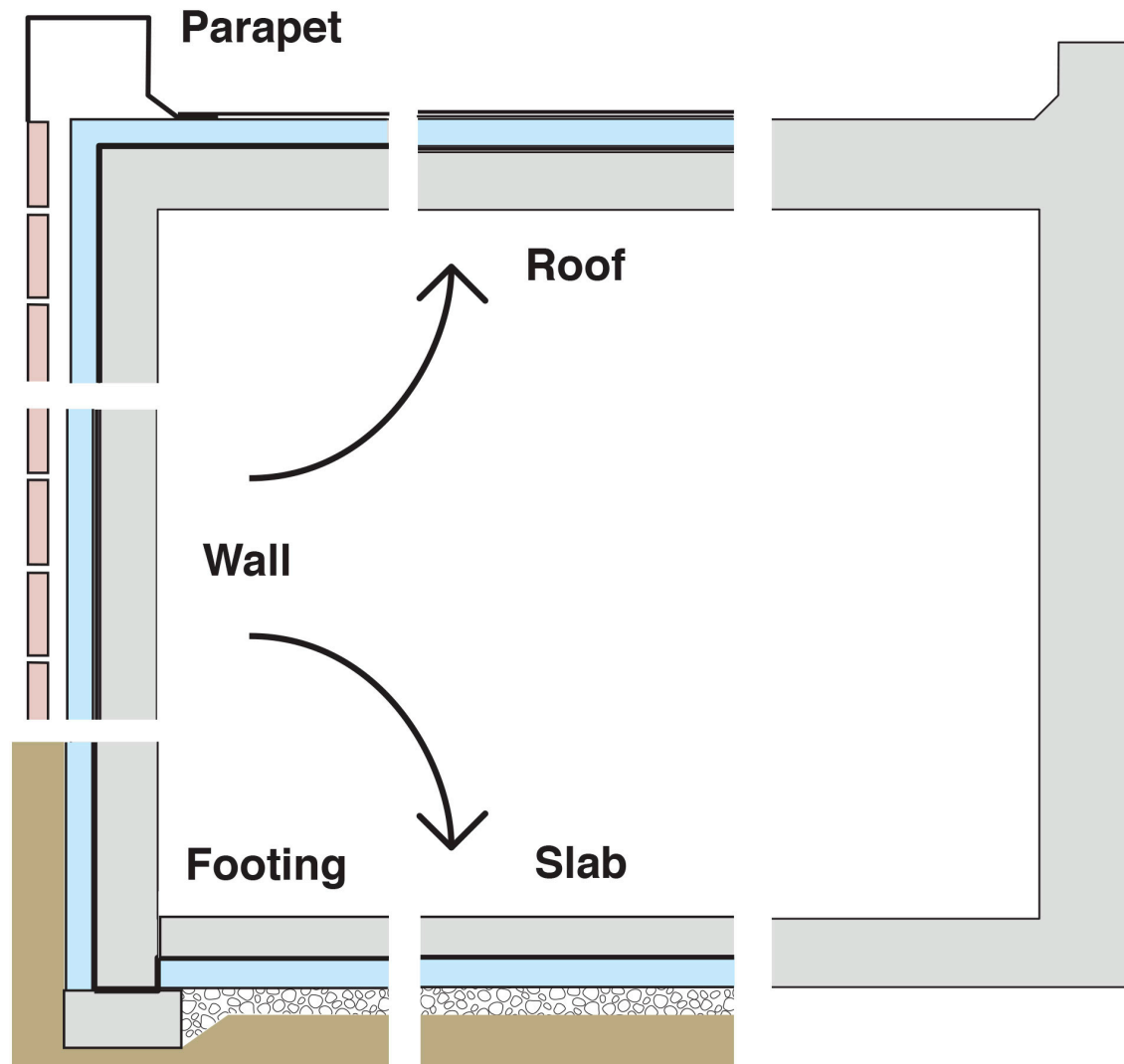


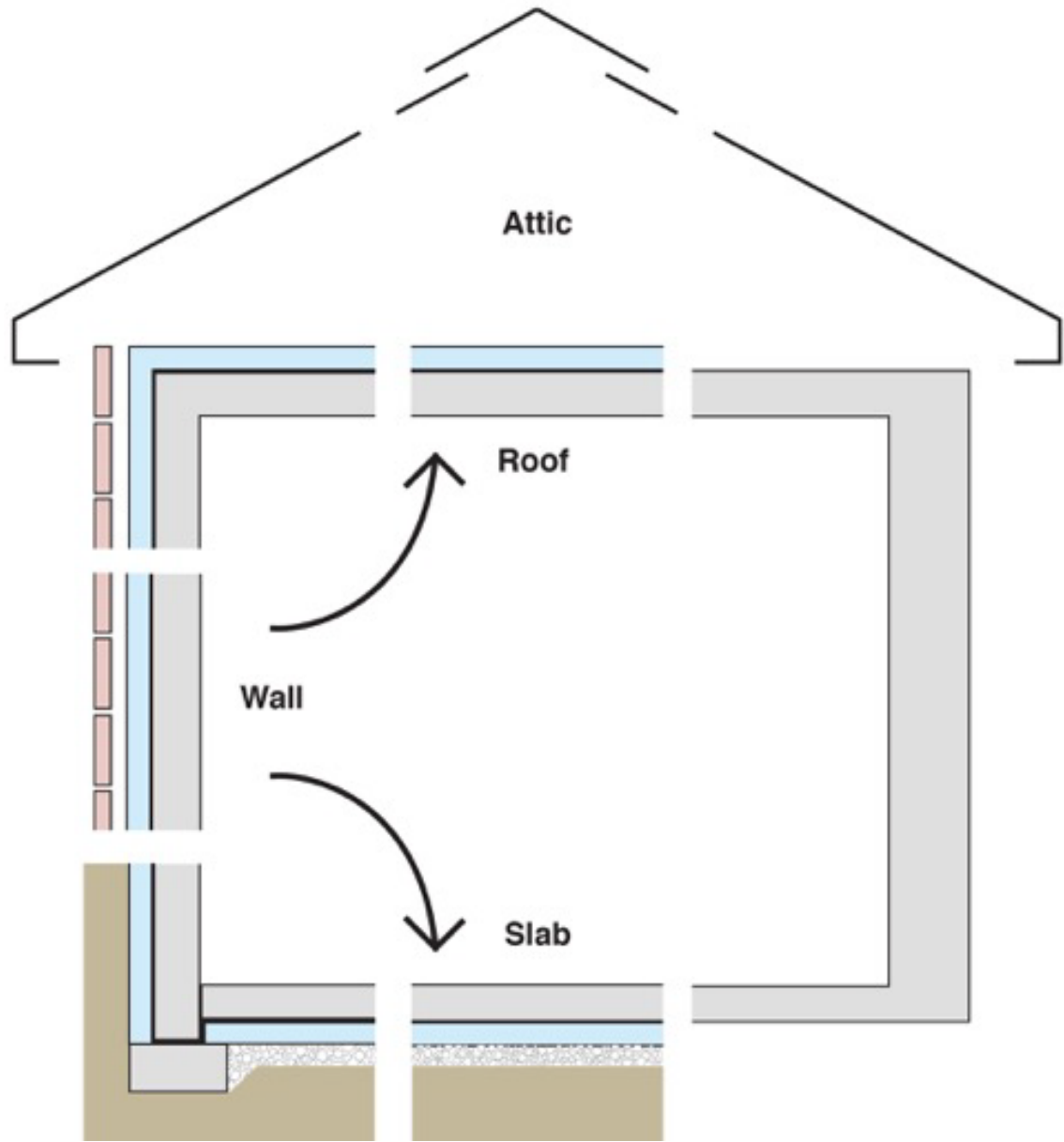


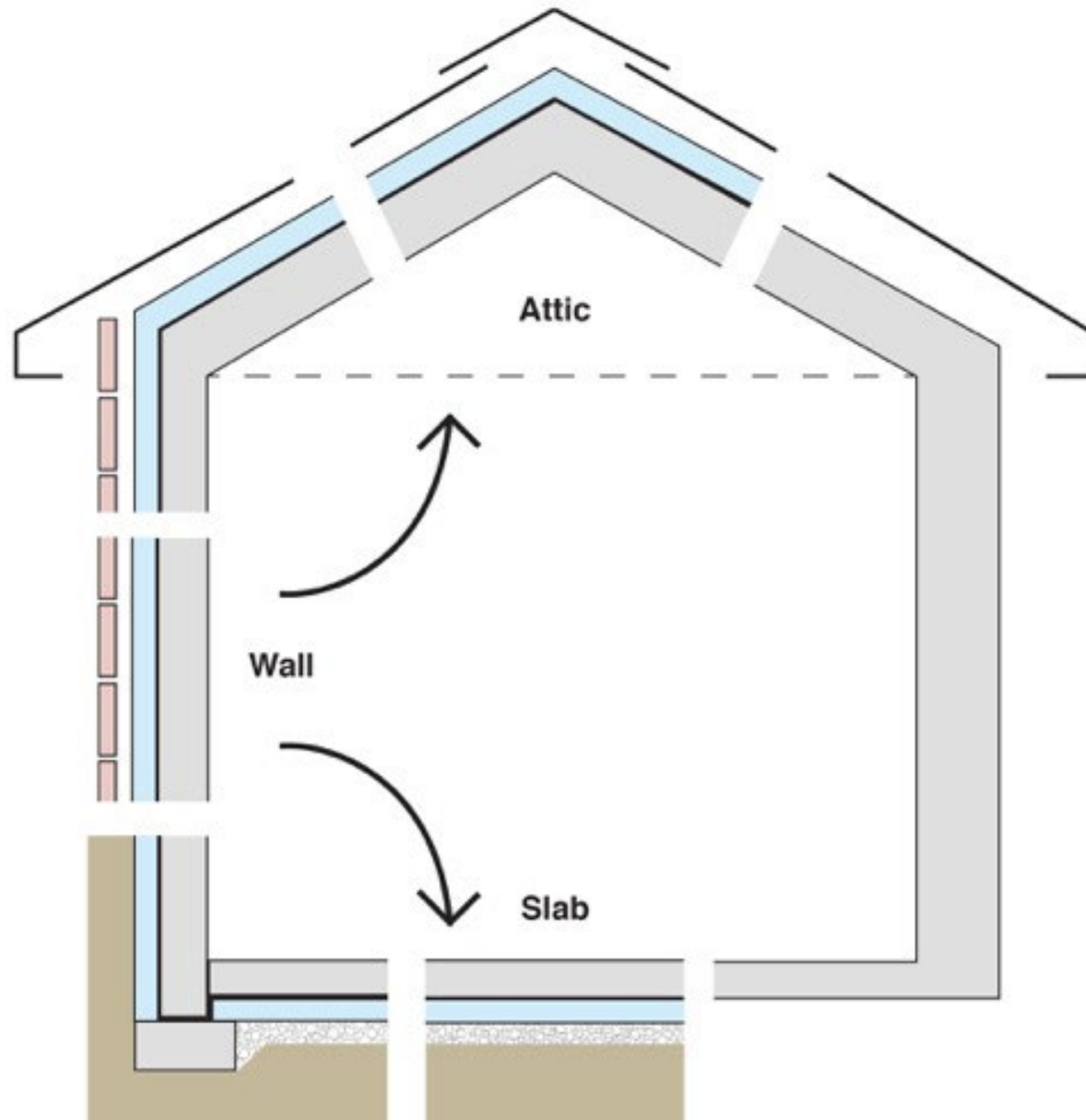


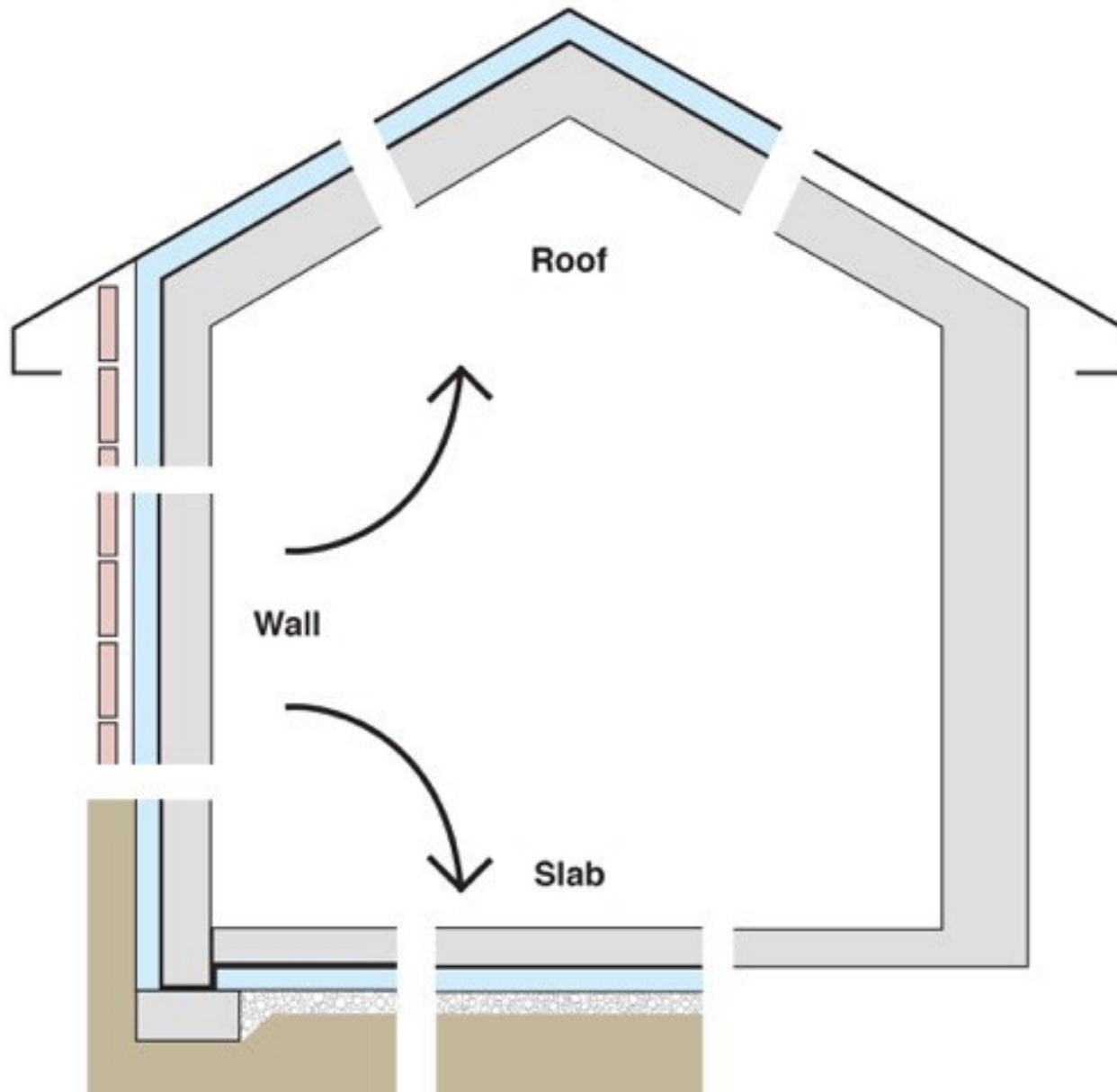


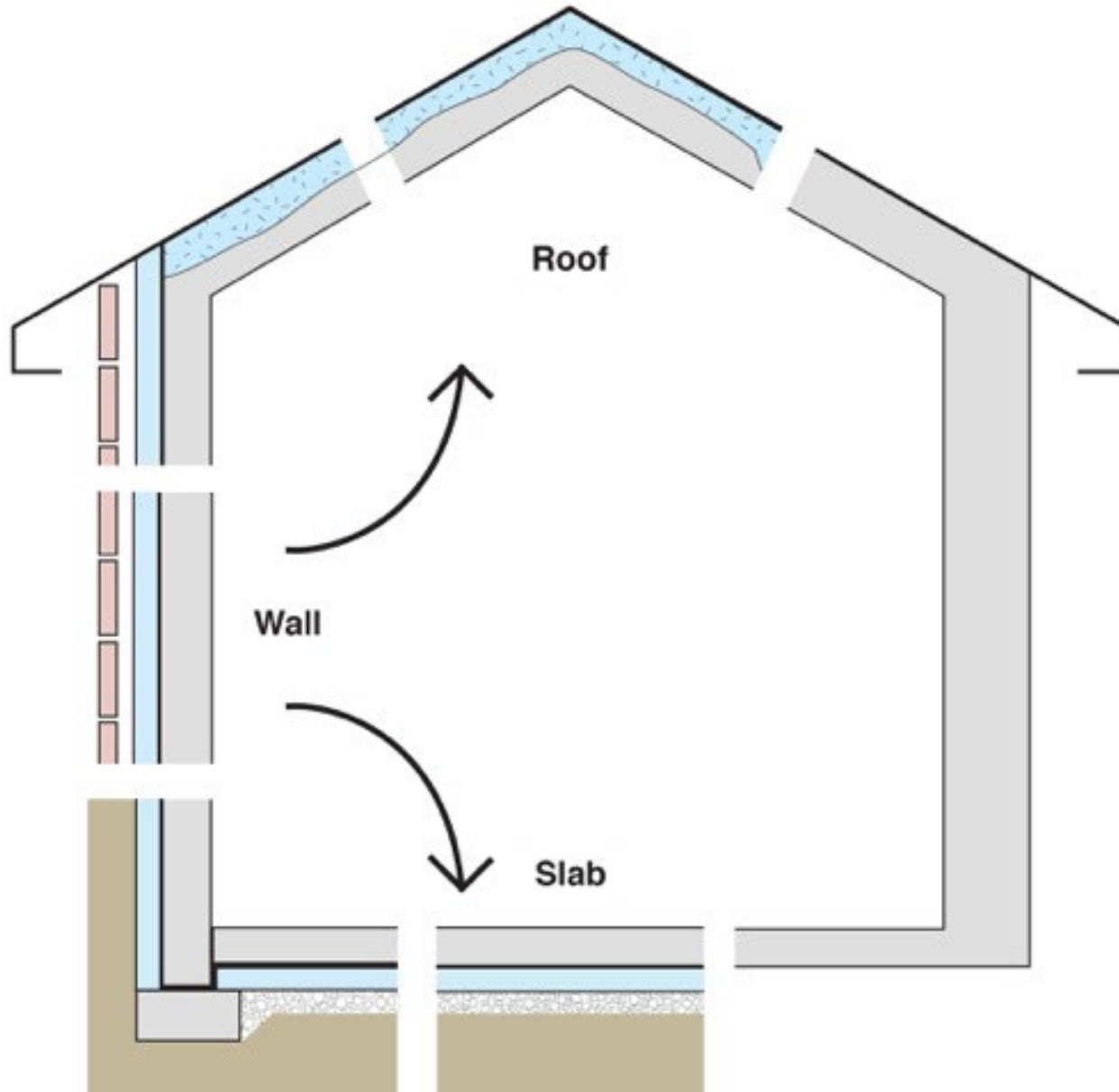




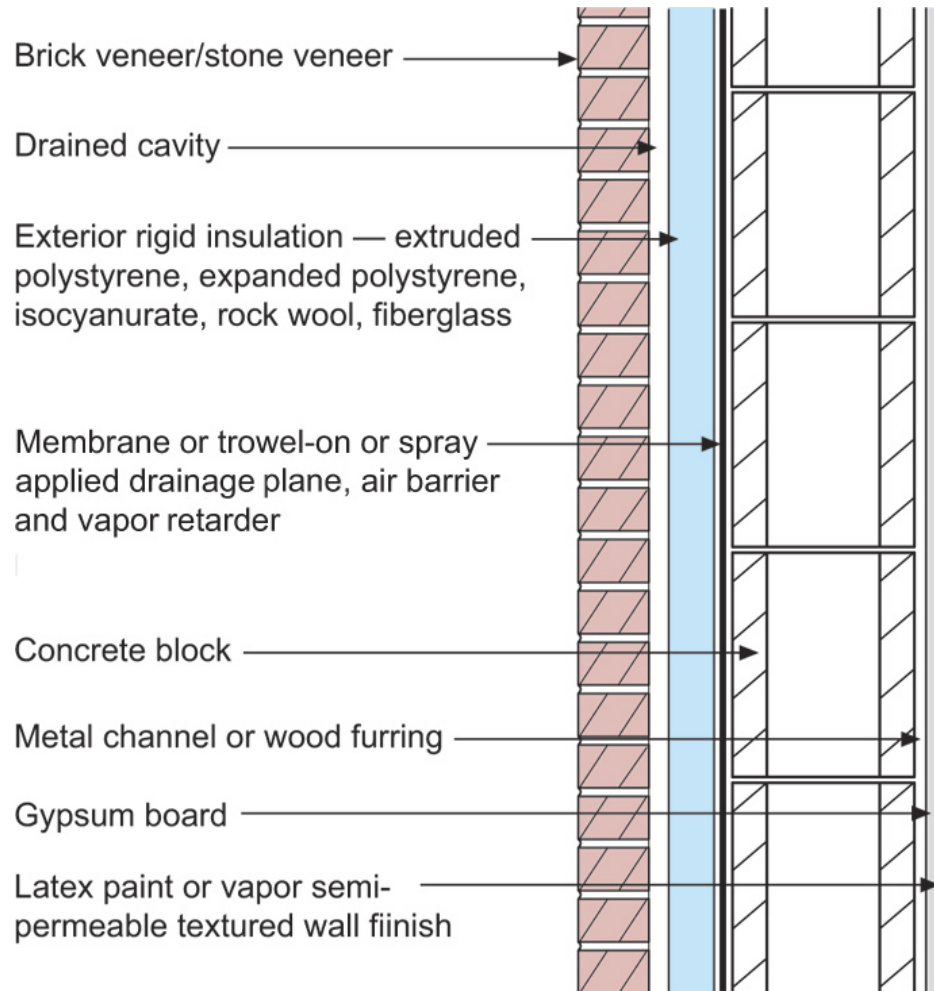




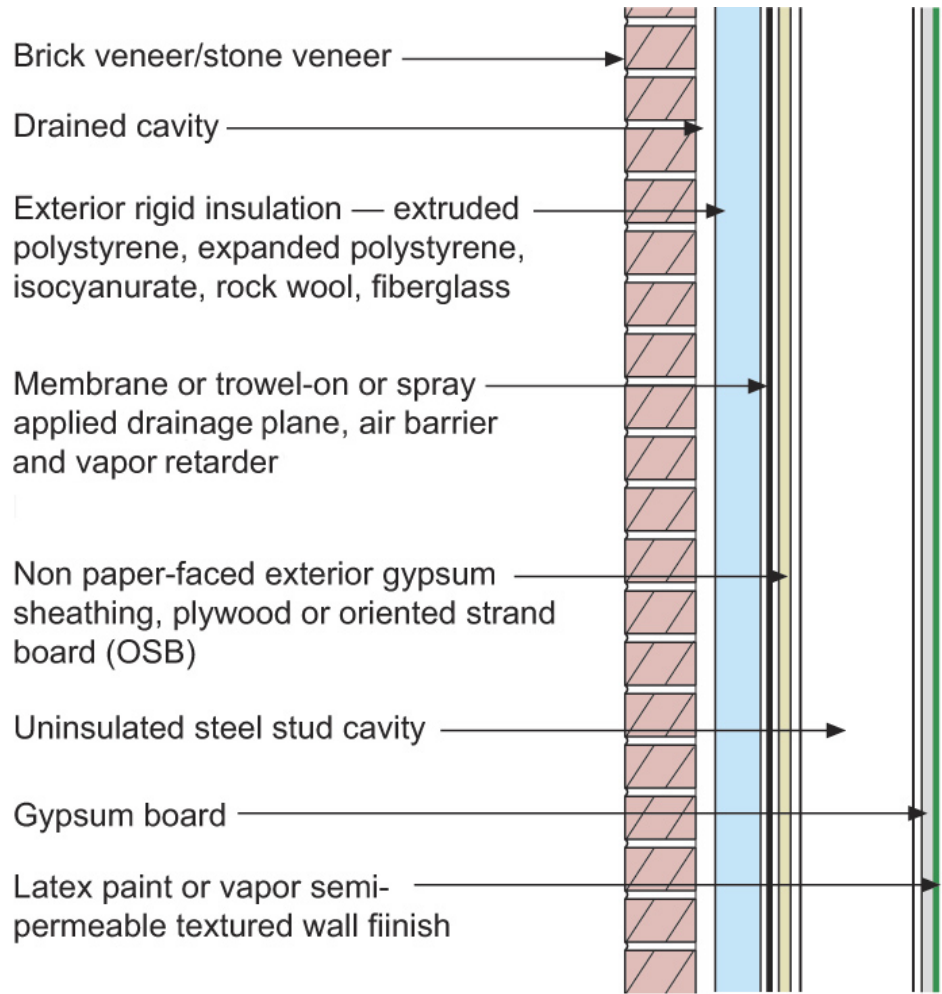


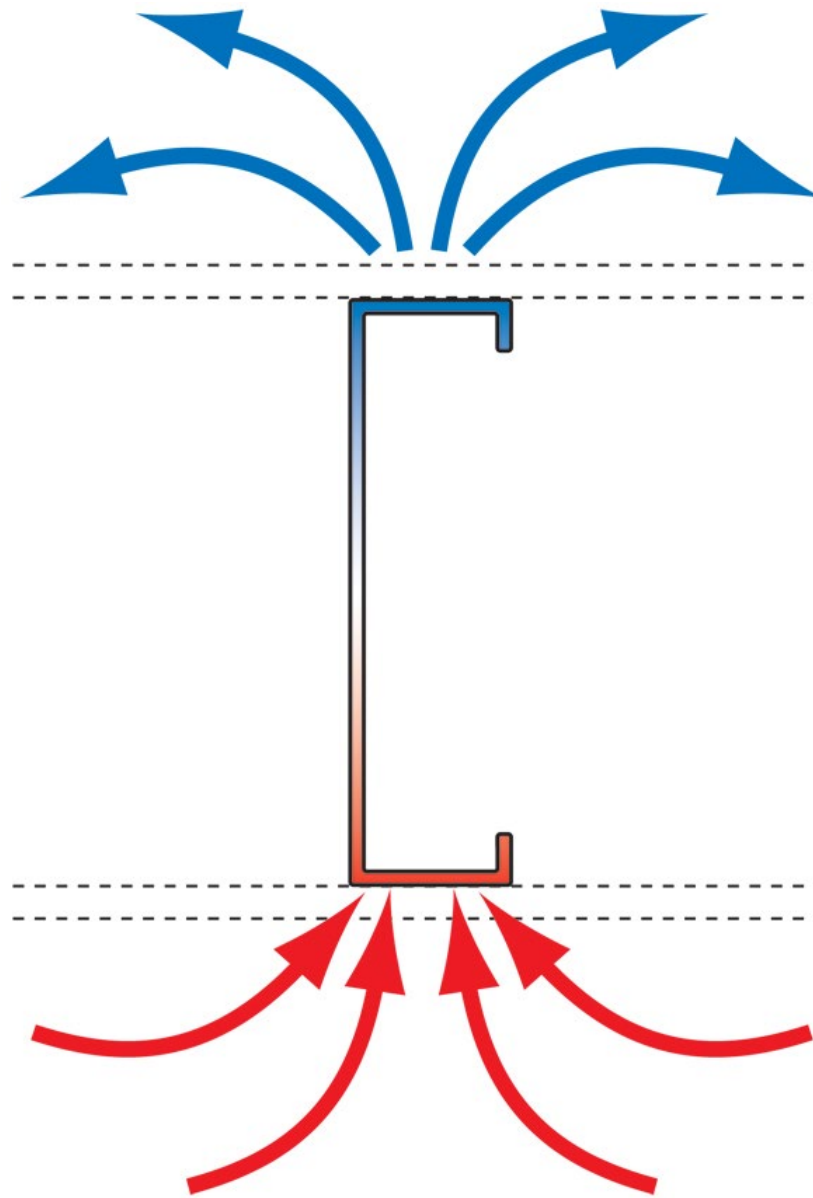


Configurations of the Perfect Wall

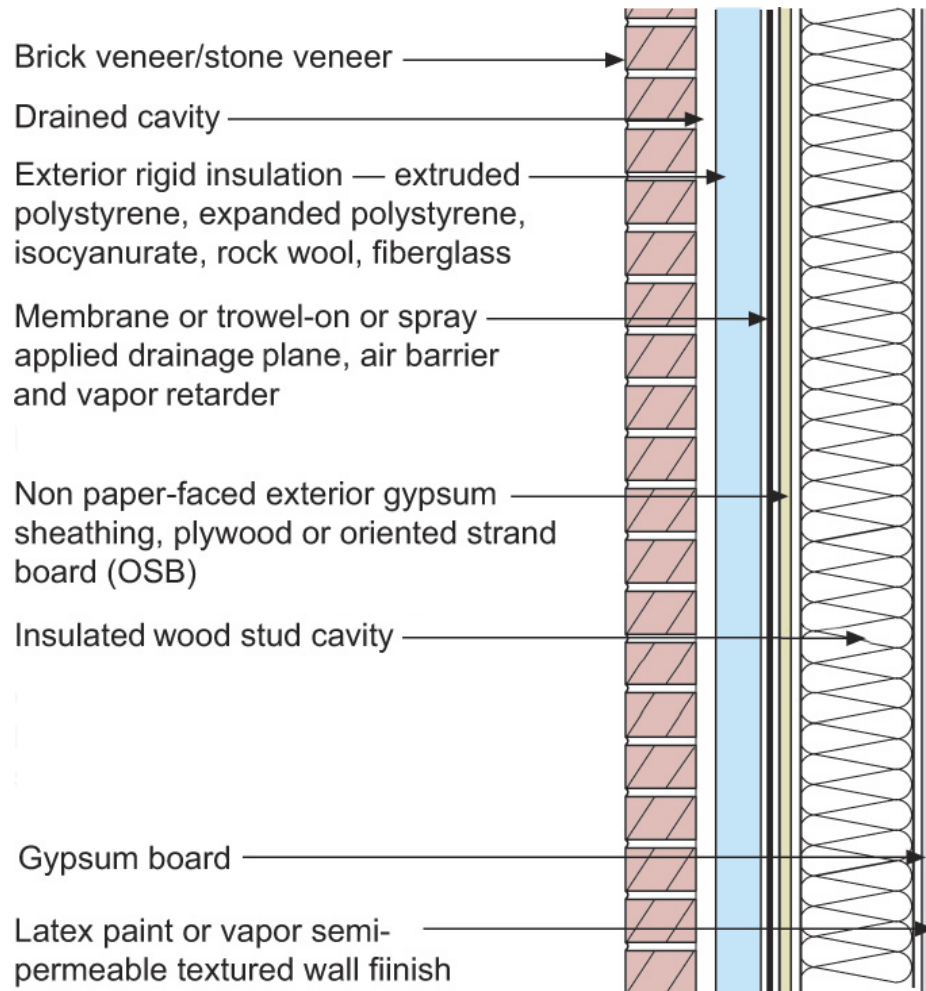


Vapor Profile

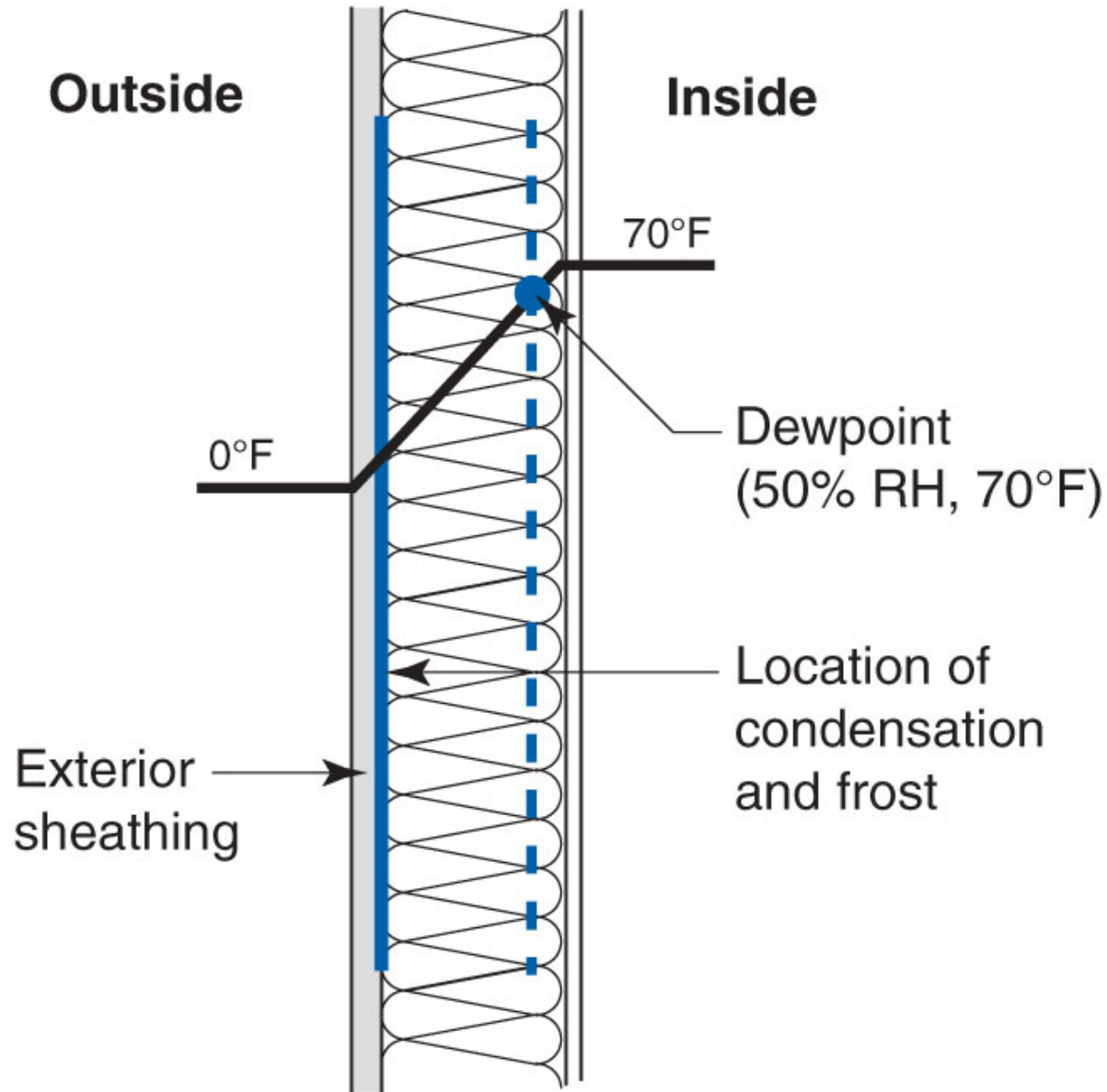








The Myth of the Dew Point





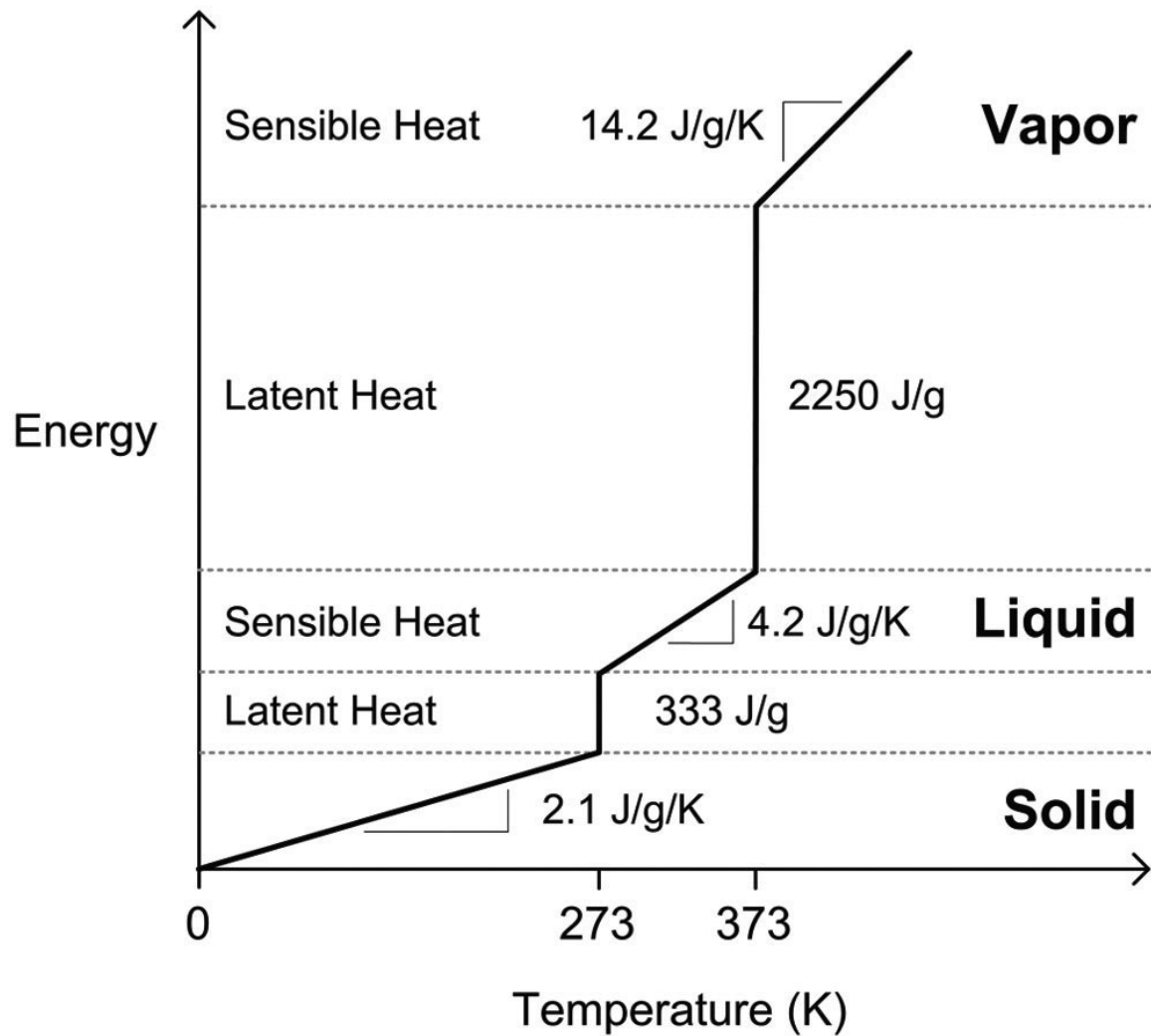


1 Btu – 1lb water 1 F. degree

1 Btu – 1lb water 1 F. degree

144 Btu's – water to ice

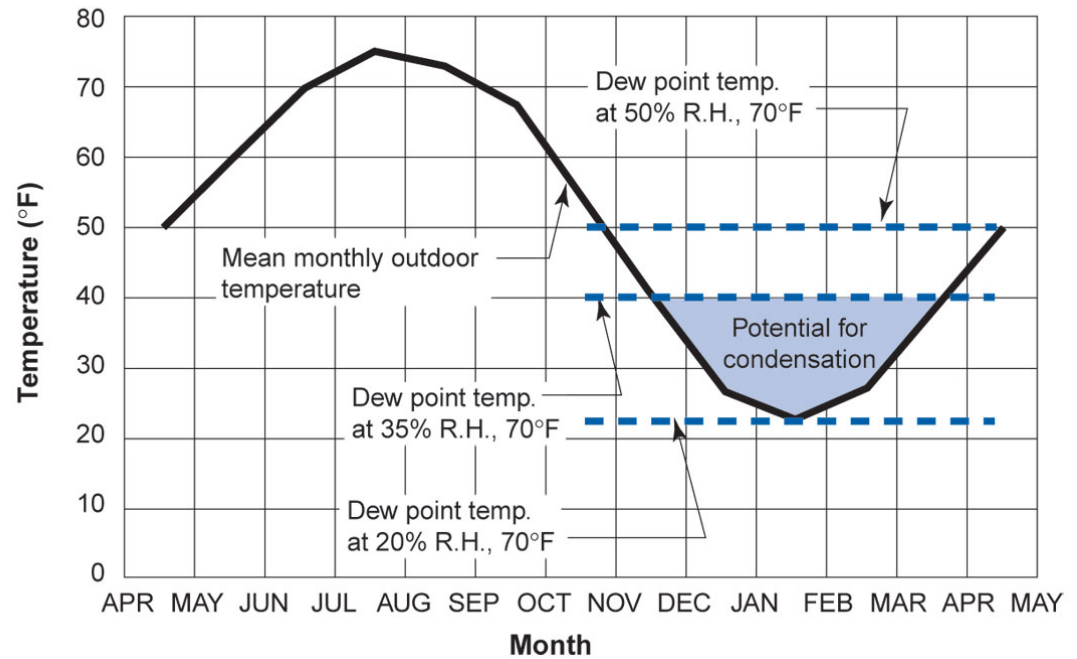
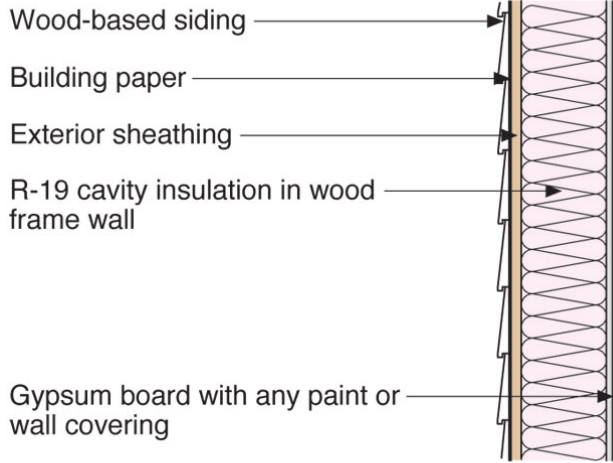
970 Btu's – vapor to water



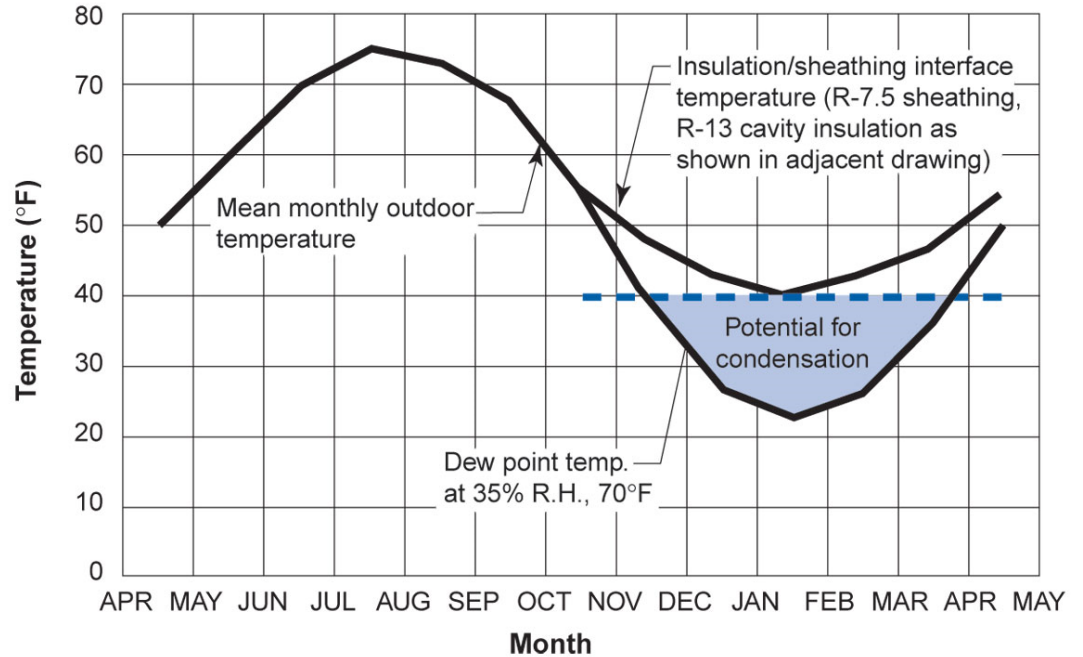
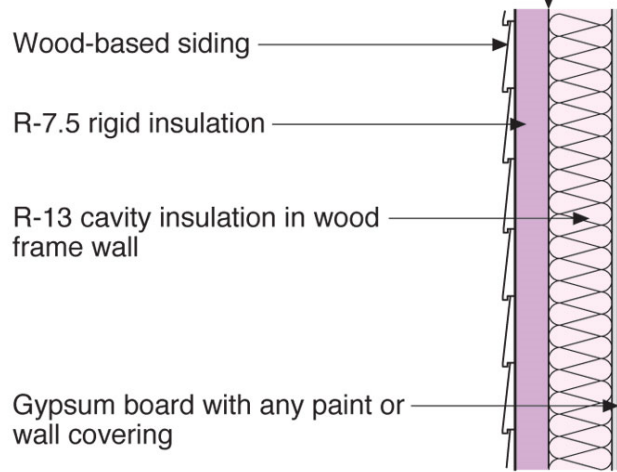
Simple linearized energy-temperature relation for water

From Straube & Burnett, 2005

The inside face of the exterior sheathing is the condensing surface of interest



The inside face of the insulating sheathing is the condensing surface of interest



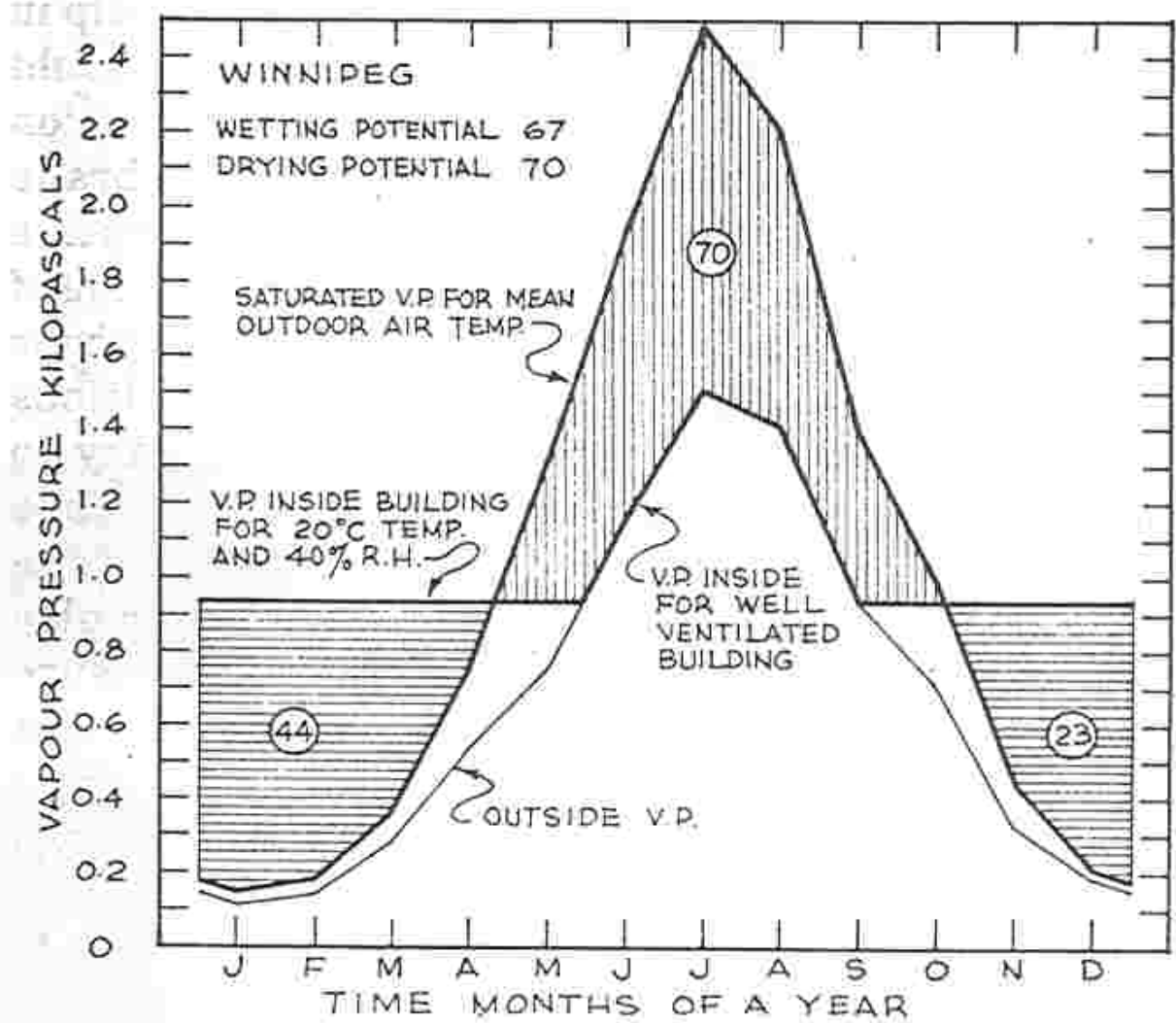
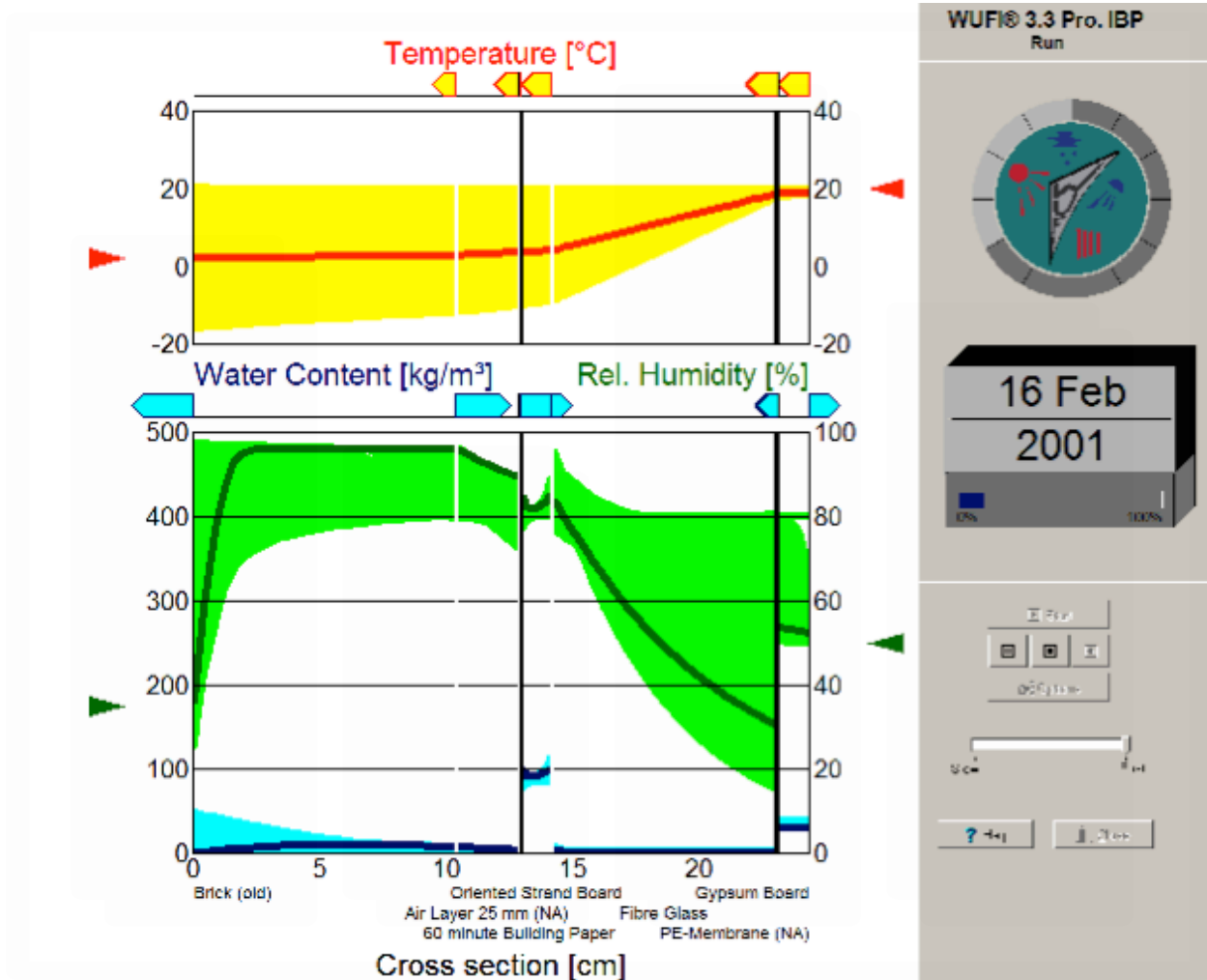


Figure 8-7. Outside vapour pressure, saturated vapour pressure and inside vapour pressure for Winnipeg.



Insulation for Condensation Control*

Climate Zone	Rigid Board or Air Impermeable Insulation	Total Cavity Insulation	Total Wall Assembly Insulation	Ratio of Rigid Board Insulation or Air Impermeable R-Value to Total Insulation R-Value
4C	R-2.5	R-13	R-15.5	15%
	R-3.75	R-20	R-23.75	15%
5	R-5	R-13	R-18	30%
	R-7.5	R-20	R-27.5	30%
6	R-7.5	R-13	R-20.5	35%
	R-11.25	R-20	R-31.25	35%
7	R-10	R-13	R-28	45%
	R-15	R-20	R-35	45%
8	R-15	R-13	R-28	50%
	R-20	R-20	R-40	50%

*Adapted from Table R 702.1 2015 International Residential Code

