

Joseph Lstiburek, Ph.D., P.Eng, ASHRAE Fellow

Building Science

There's No Such Thing As A Free
Thermodynamic Lunch

www.buildingscience.com

Energy Flow



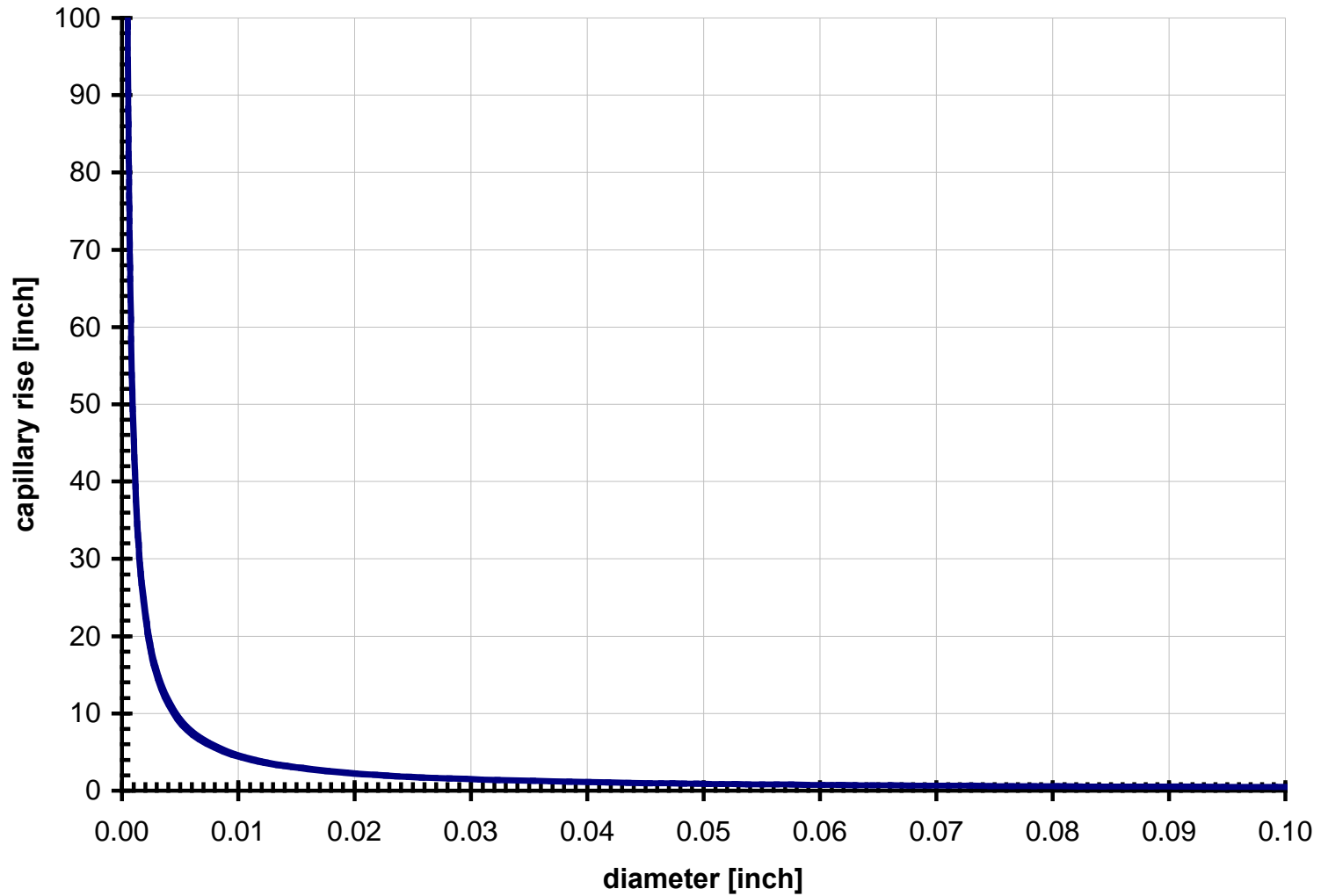


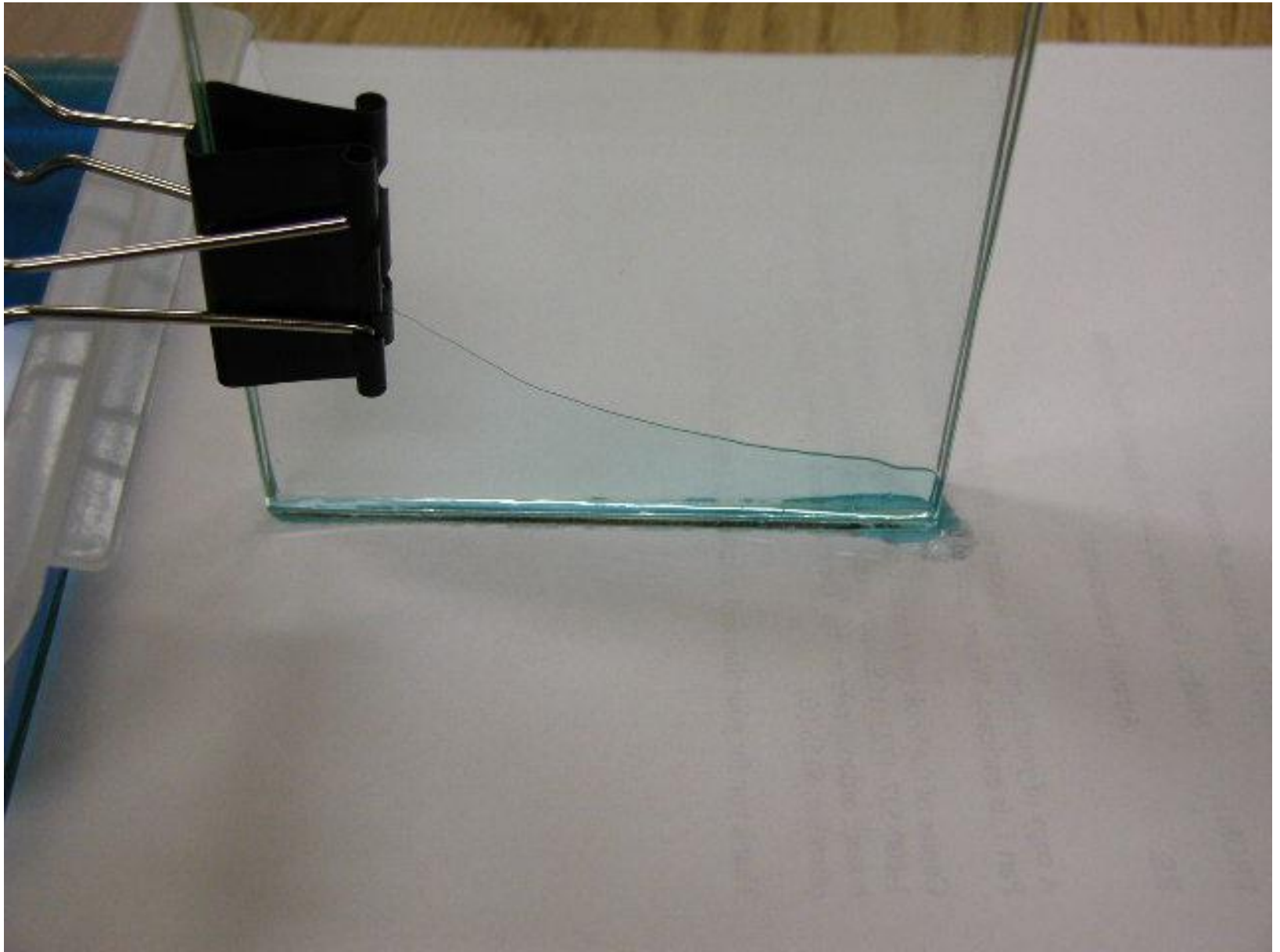


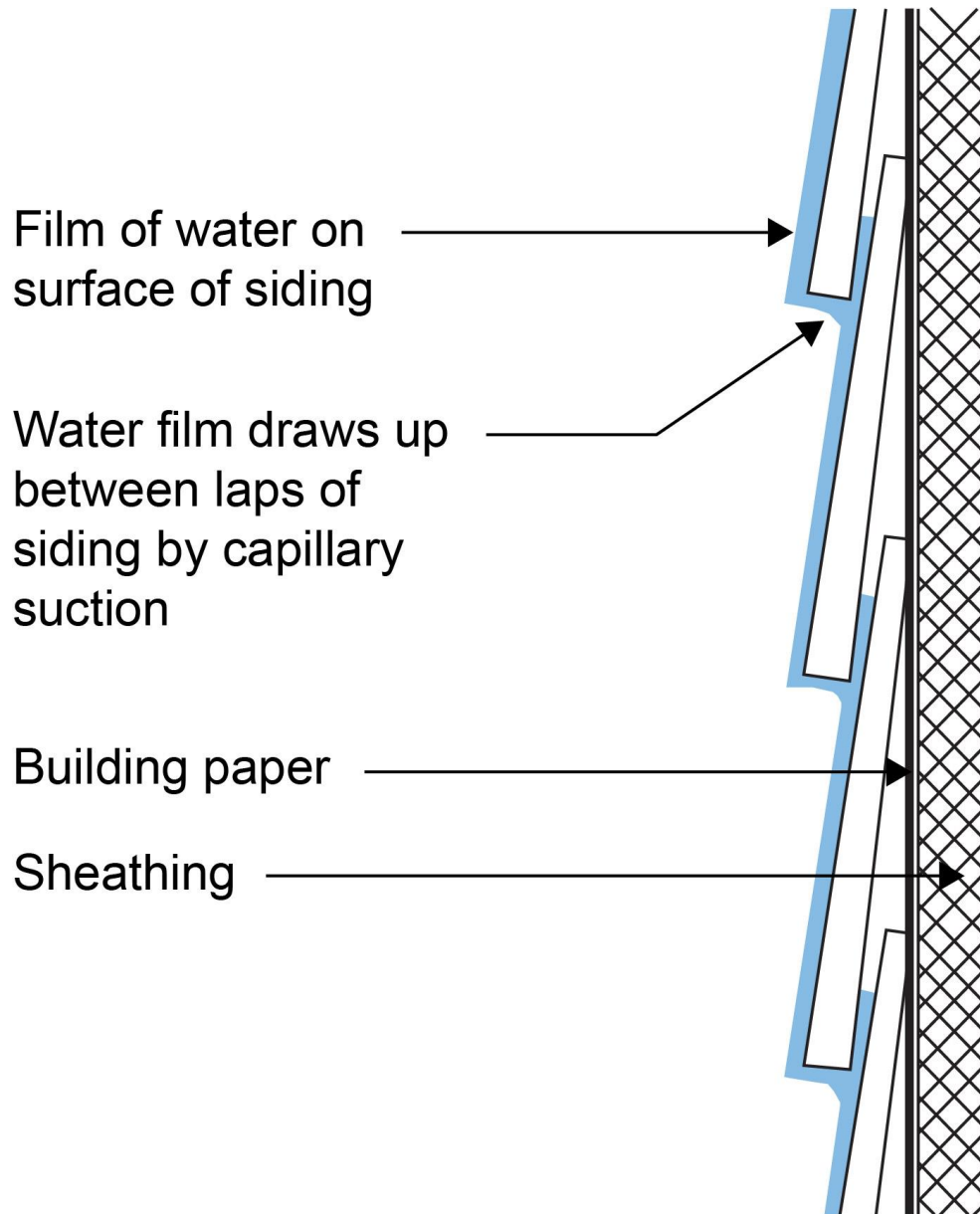


Capillarity

Capillary rise versus diameter









Attic Venting





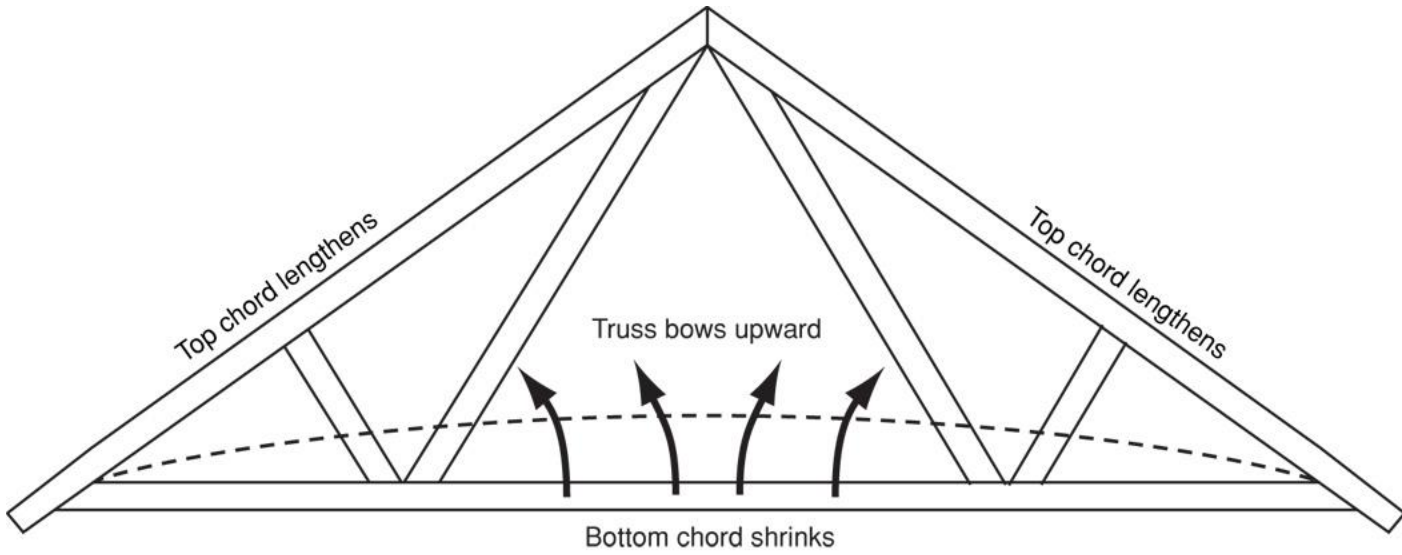
Vapor Barriers In the Wrong Place



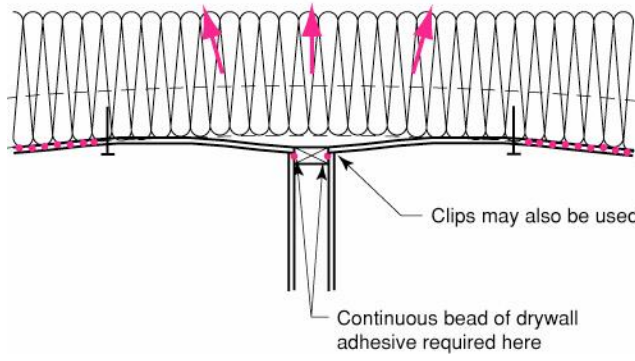
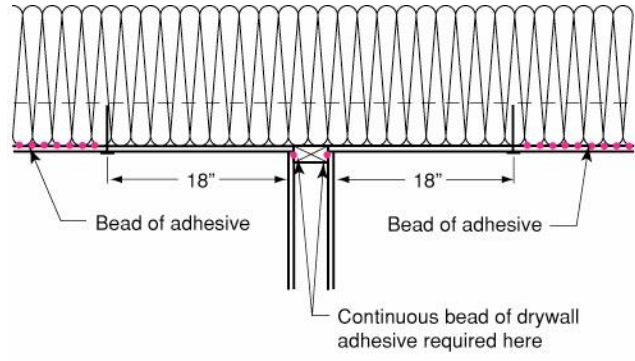
Truss Uplift

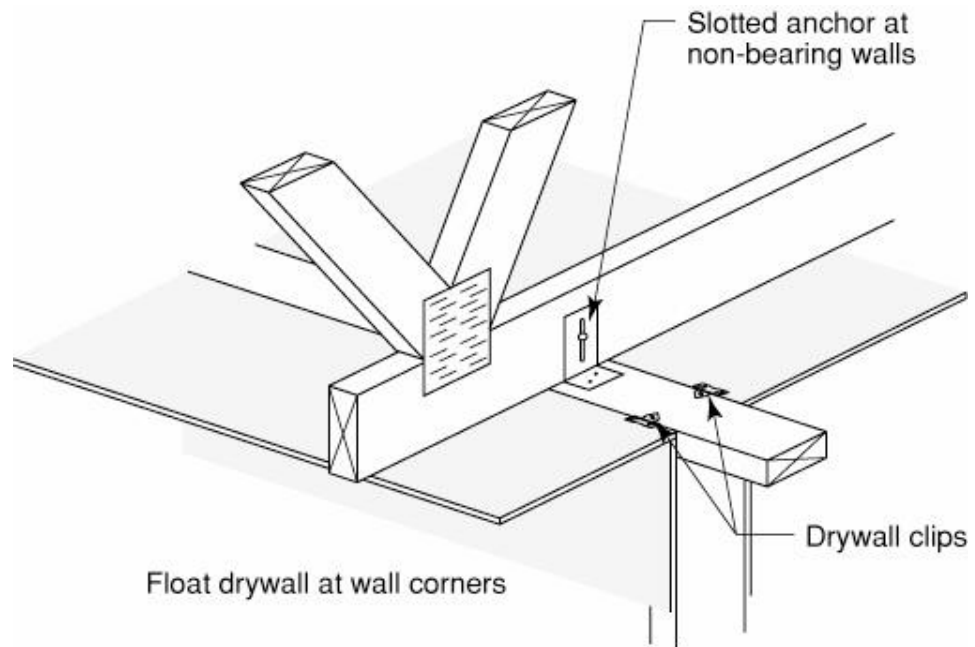












Stucco Failures

Exterior Insulation Finish Systems

EIFS





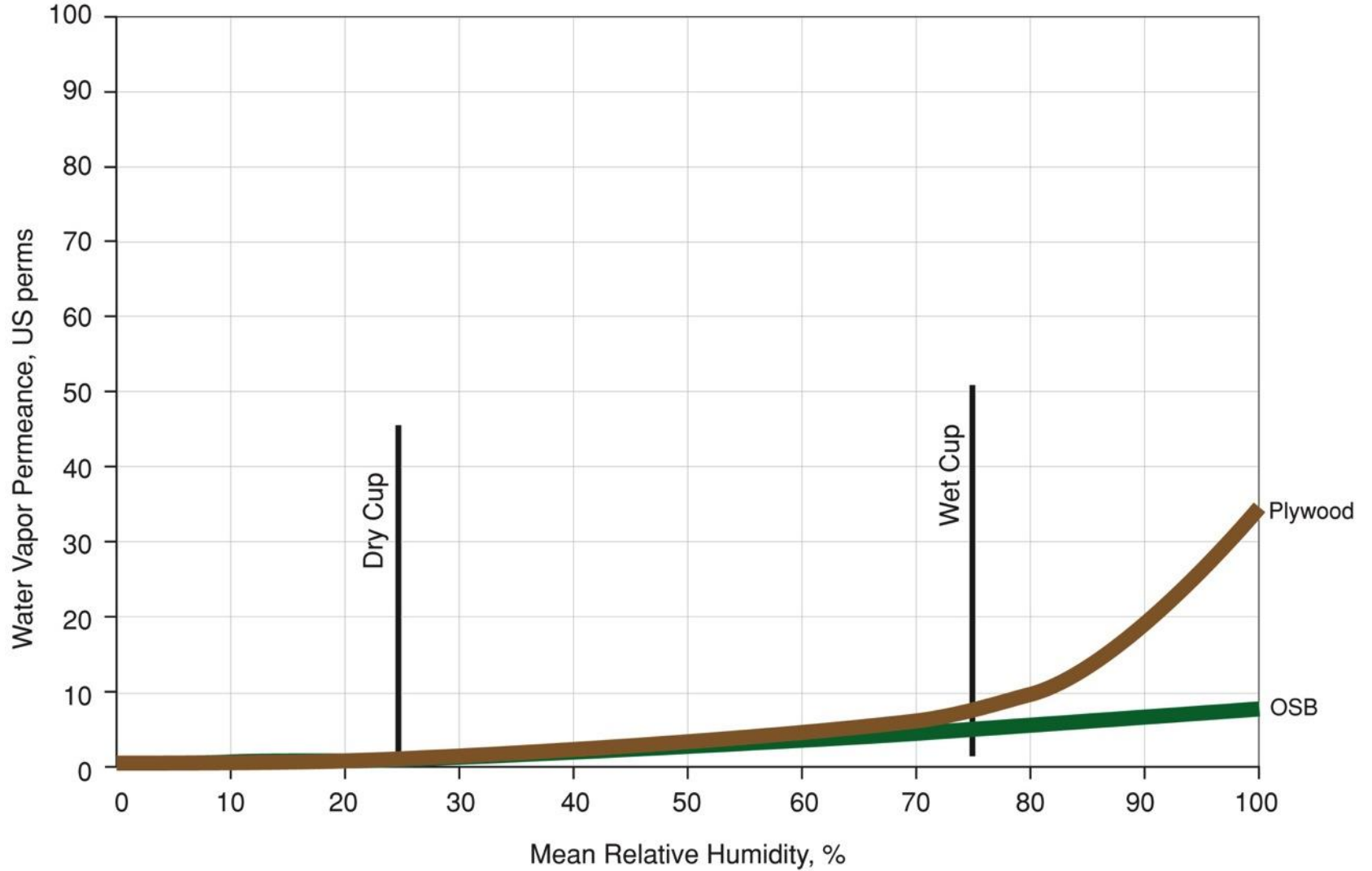




OSB



Water Vapor Permeance of Sheathing Materials



Side Trip To Vancouver....







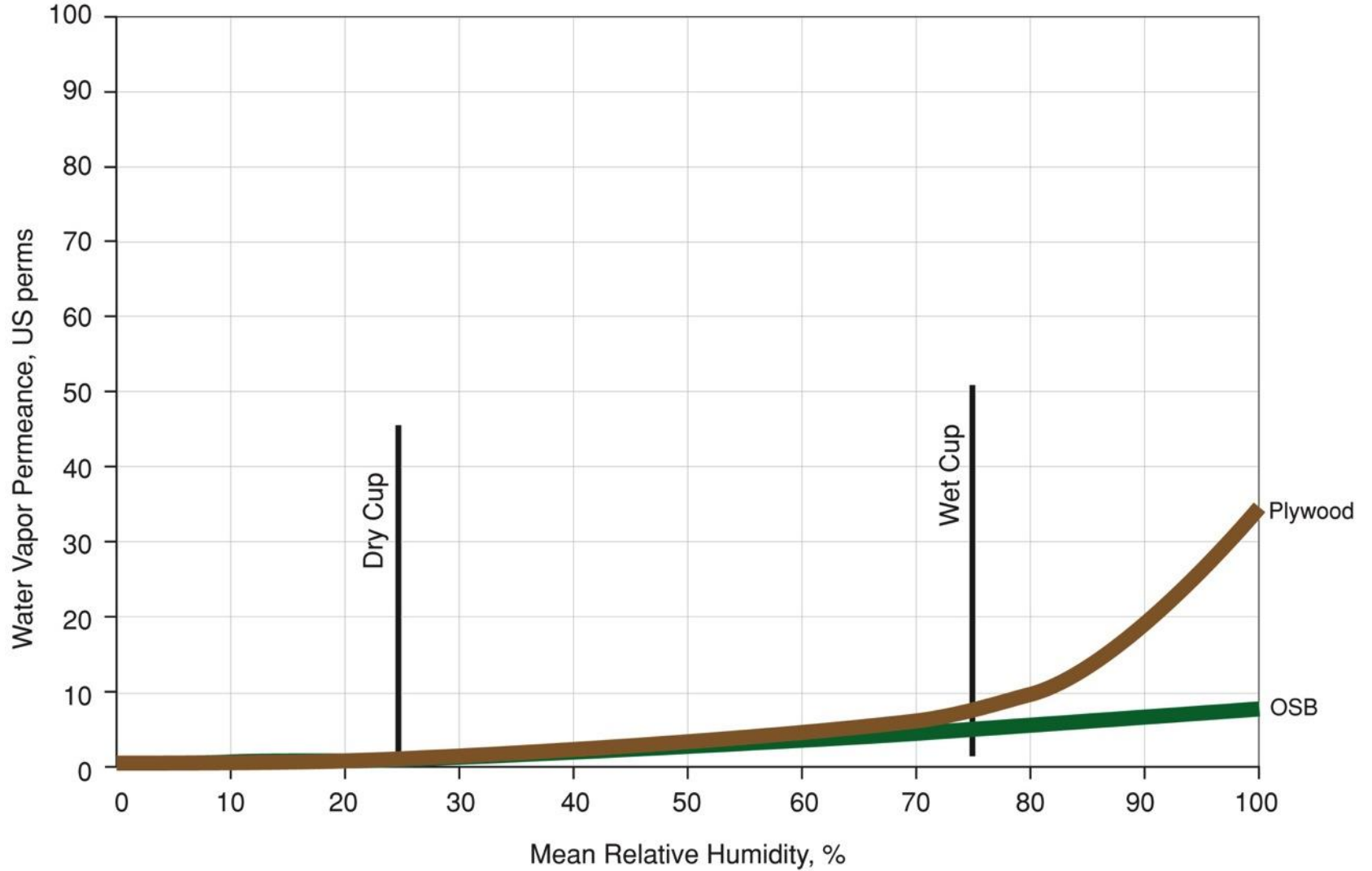


Materials....

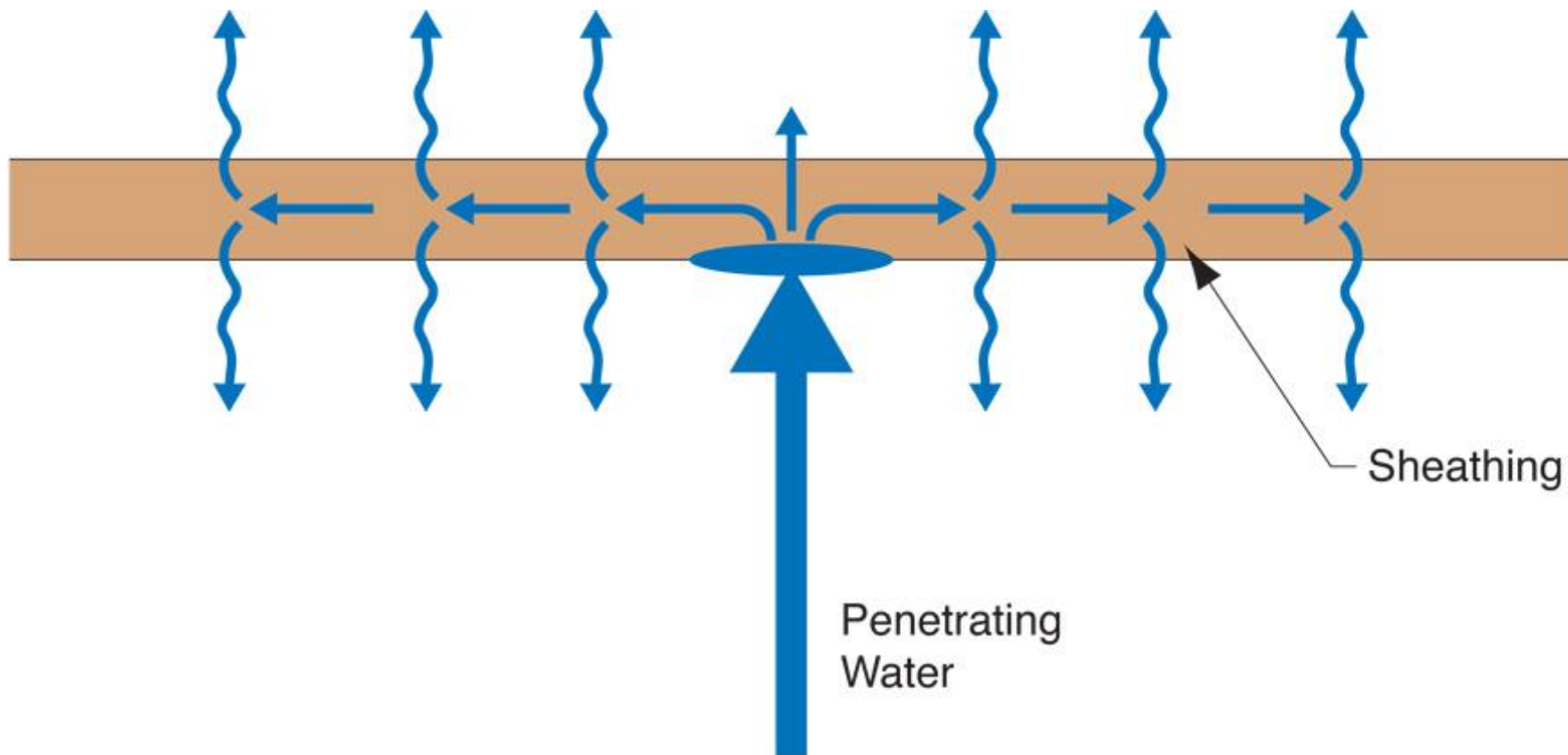


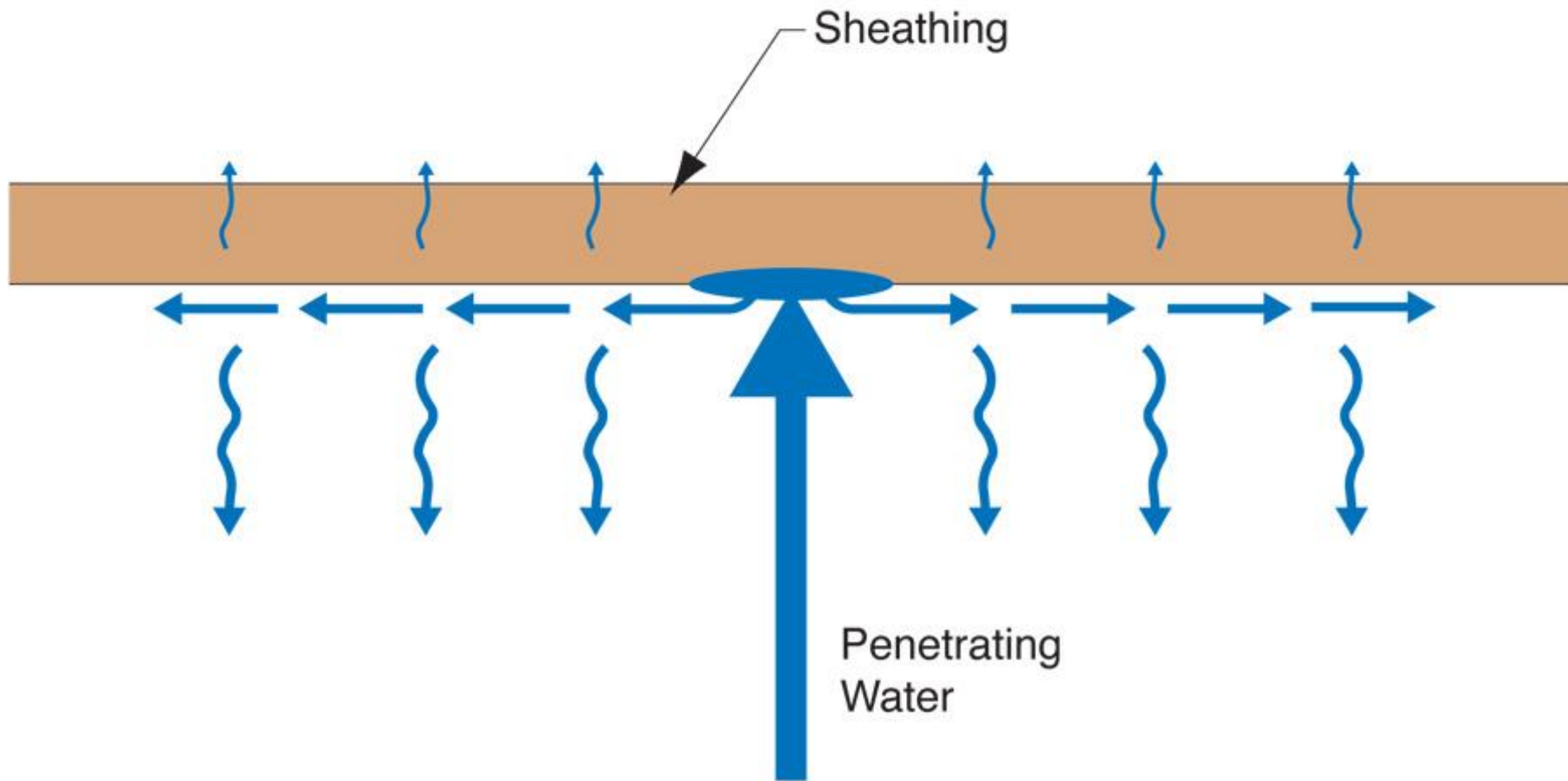


Water Vapor Permeance of Sheathing Materials









Some Physics....

Arrhenius Equation

For Every 10 Degree K Rise
Reaction Rate Doubles

$$k = Ae^{-E_a/(RT)}$$

Damage Functions

Water

Heat

Ultra-violet Radiation

2nd Law of Thermodynamics

Heat Flow Is From Warm To Cold

Moisture Flow Is From Warm To Cold

Moisture Flow Is From More To Less

Air Flow Is From A Higher Pressure to a
Lower Pressure

Gravity Acts Down

Moisture Flow Is From Warm To Cold
Moisture Flow Is From More To Less

Moisture Flow Is From Warm To Cold
Moisture Flow Is From More To Less

Thermal Gradient – Thermal Diffusion
Concentration Gradient – Molecular Diffusion

Moisture Flow Is From Warm To Cold
Moisture Flow Is From More To Less

Thermal Gradient – Thermal Diffusion
Concentration Gradient – Molecular Diffusion

Vapor Diffusion

Thermodynamic Potential



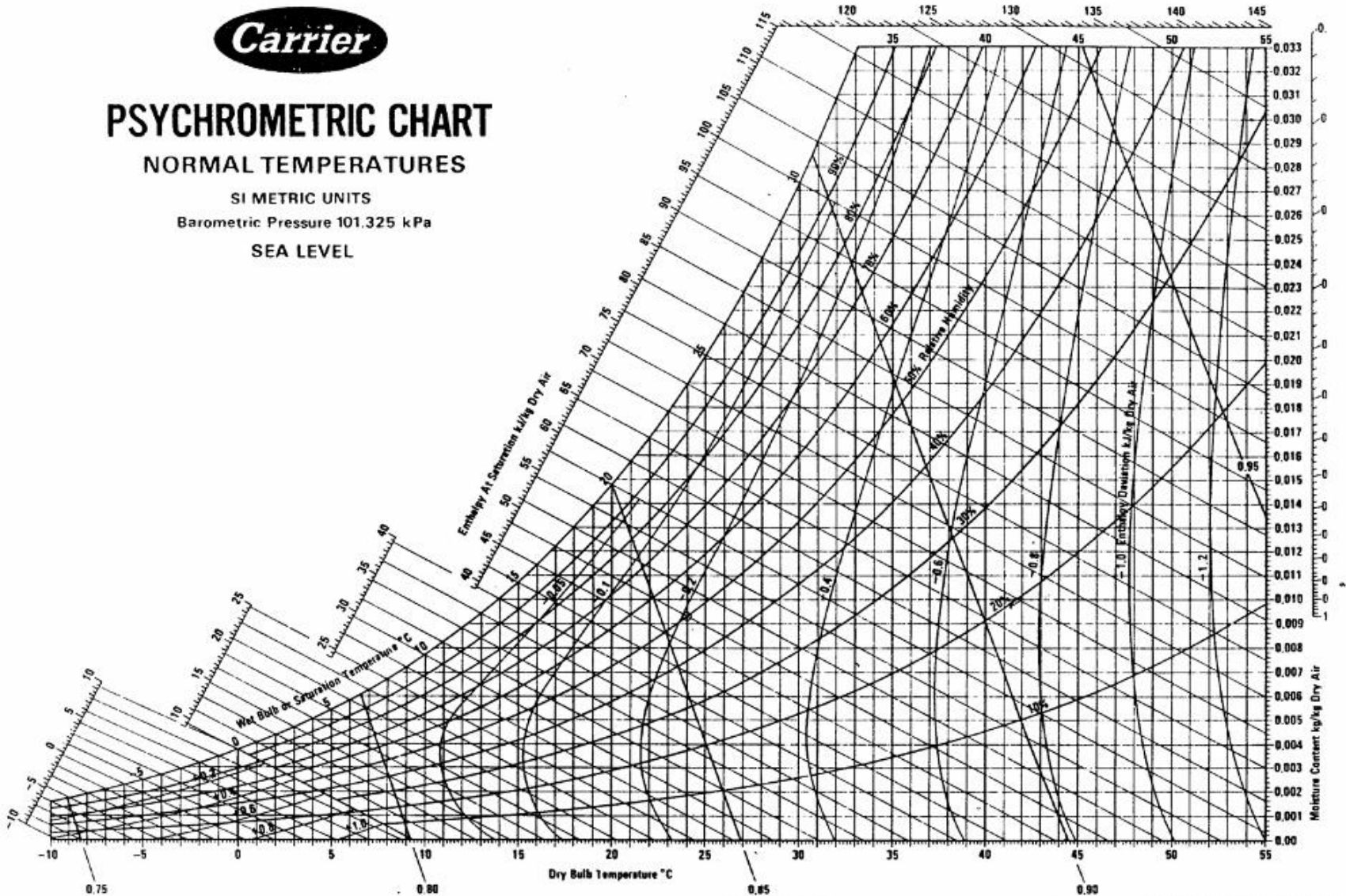
PSYCHROMETRIC CHART

NORMAL TEMPERATURES

SI METRIC UNITS

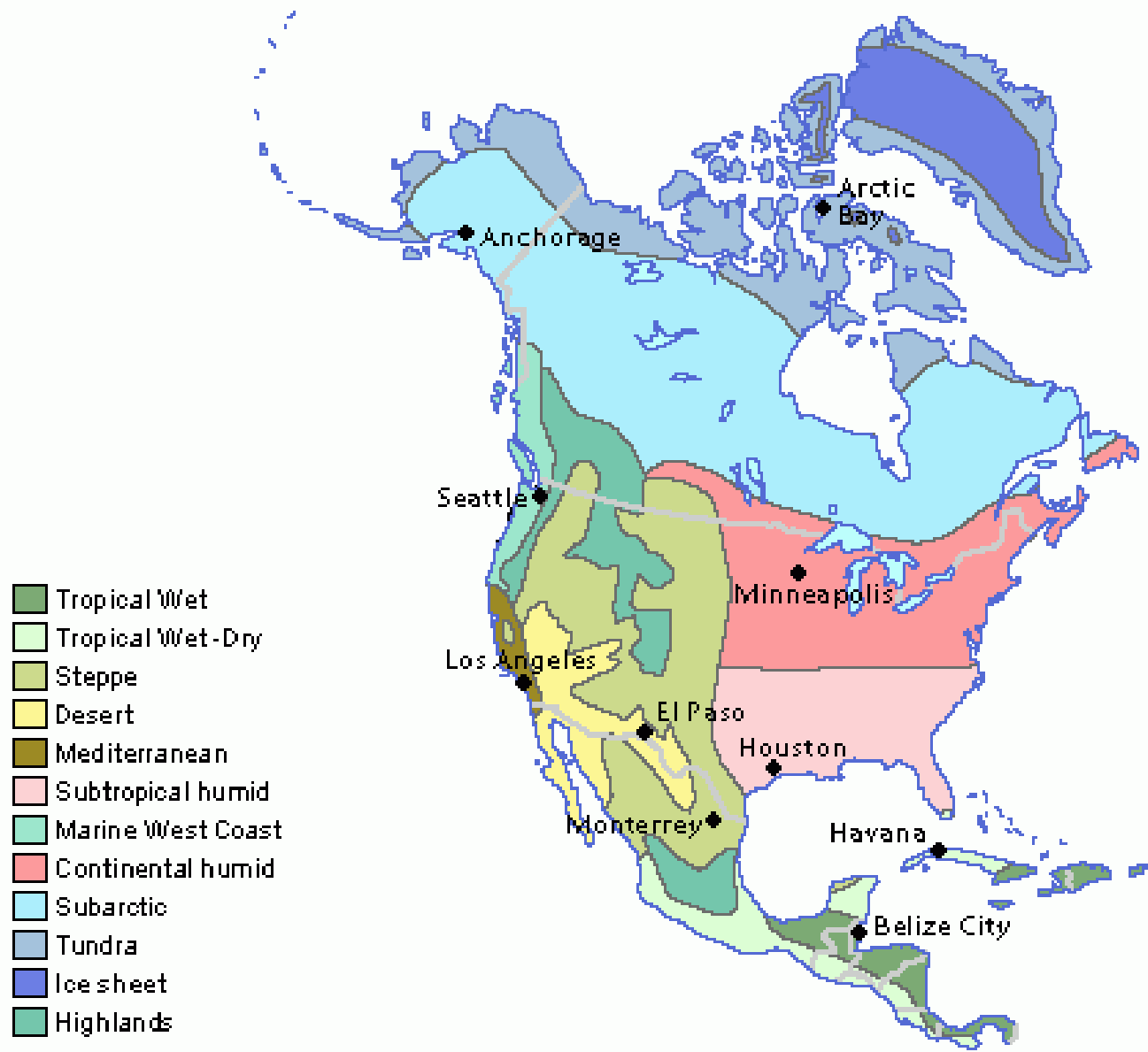
Barometric Pressure 101.325 kPa

SEA LEVEL



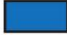



The Effect of Climate

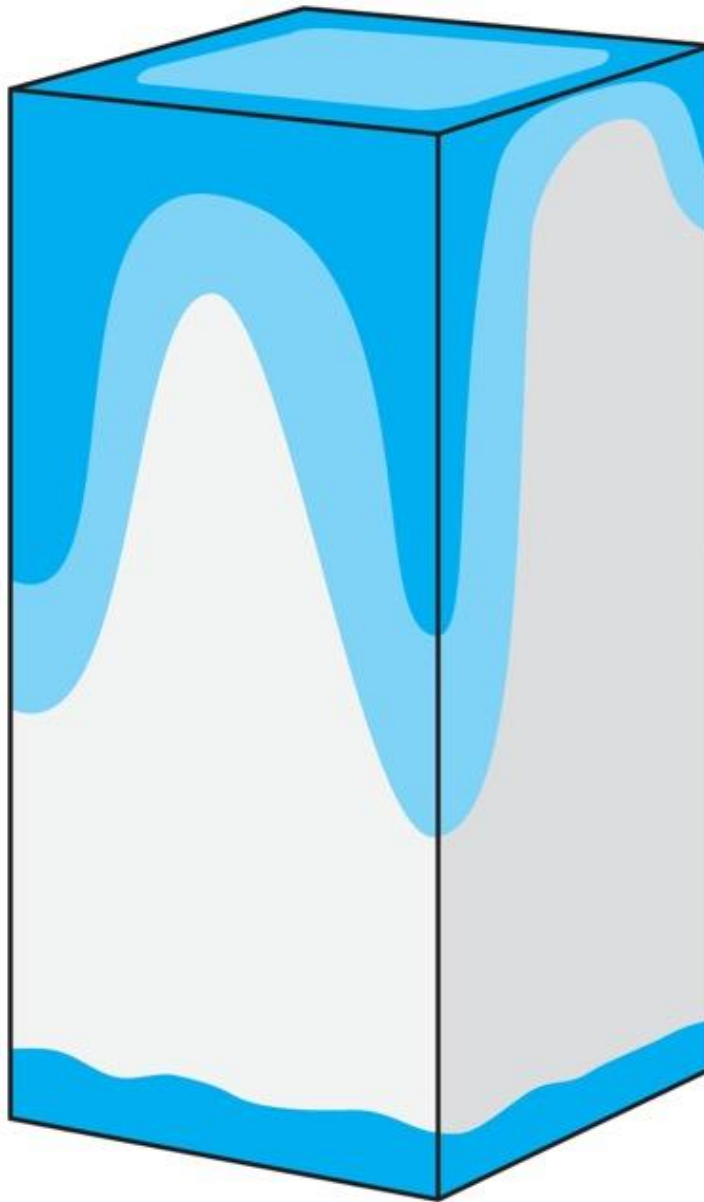


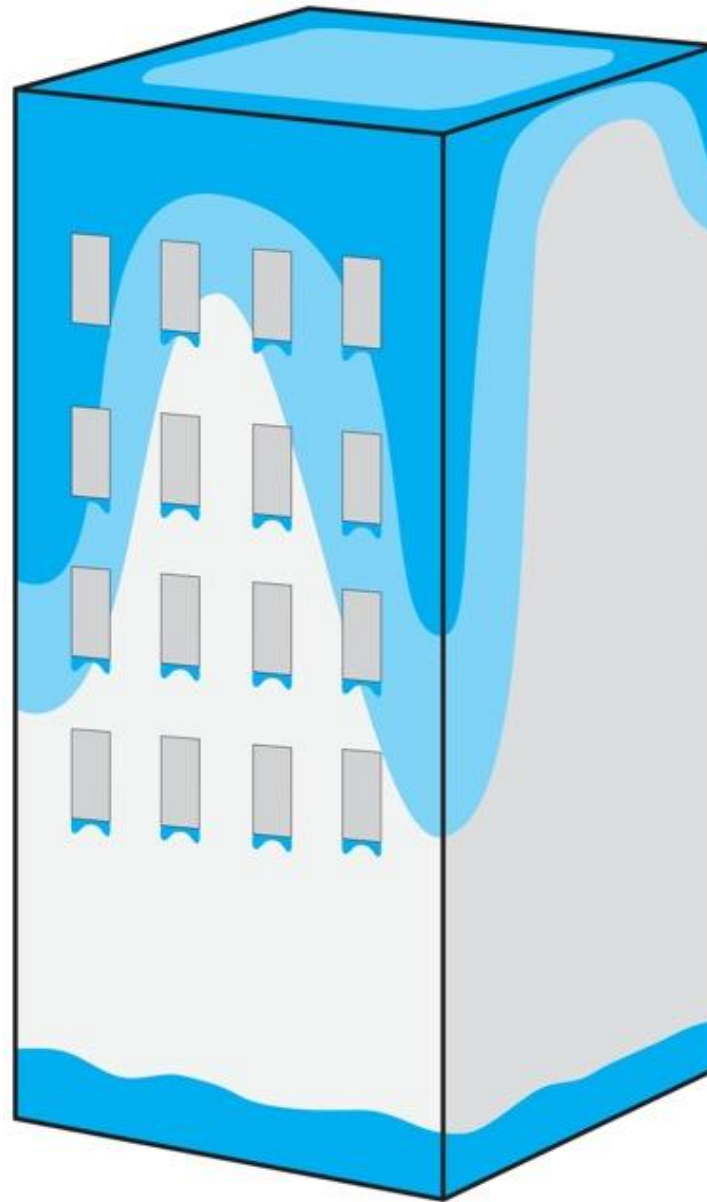




Exposure

Extreme		Over 60"
High		40" - 60"
Moderate		20" - 40"
Low		Under 20"





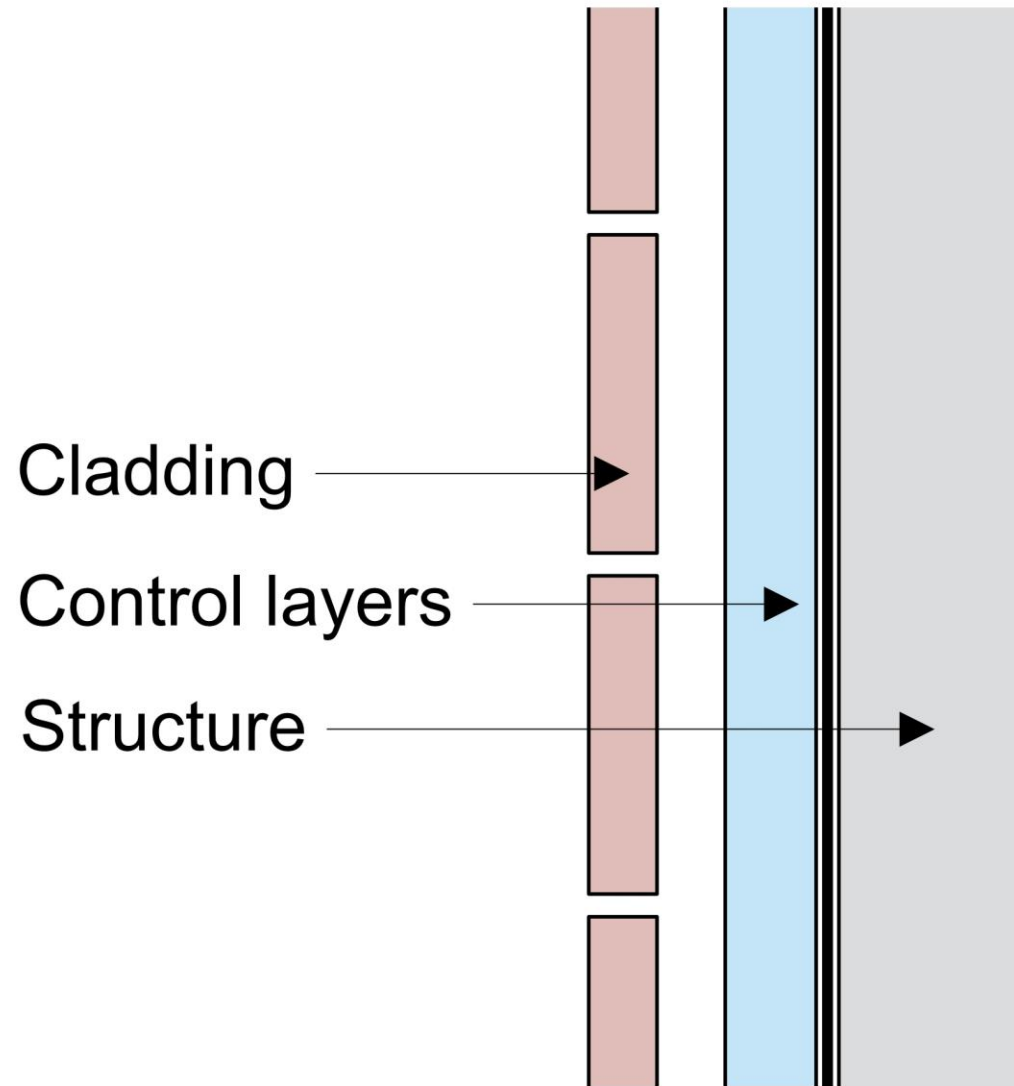
The Perfect Wall

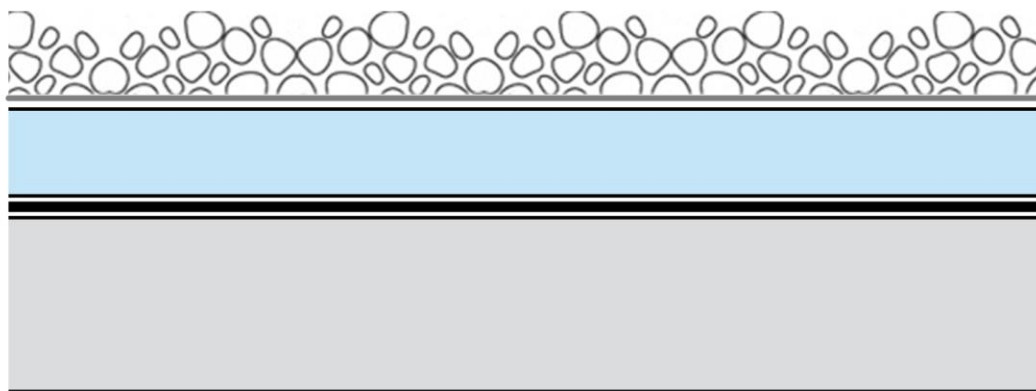
Water Control Layer

Air Control Layer

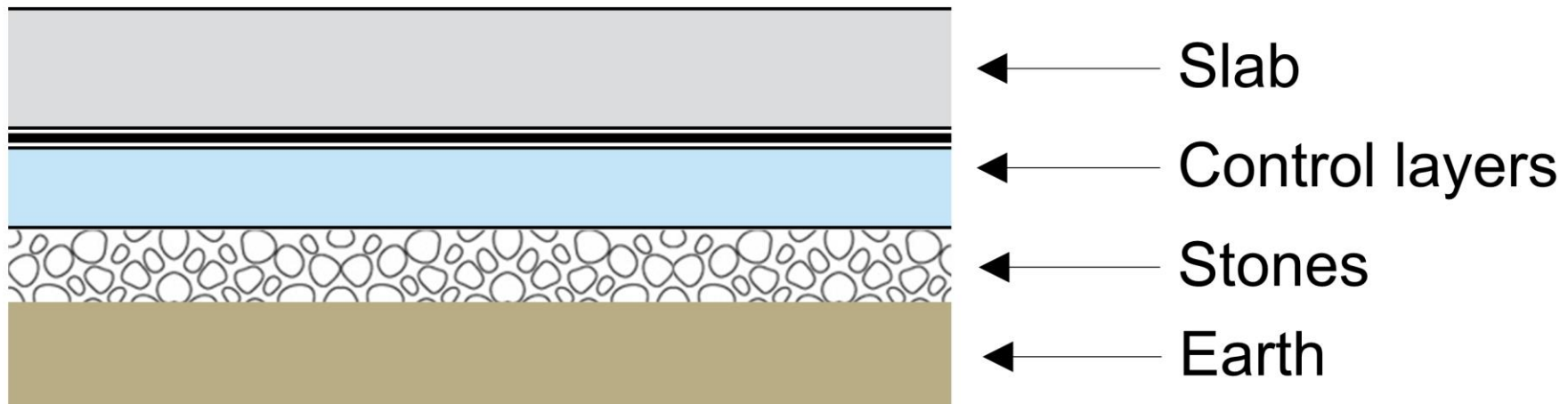
Vapor Control Layer

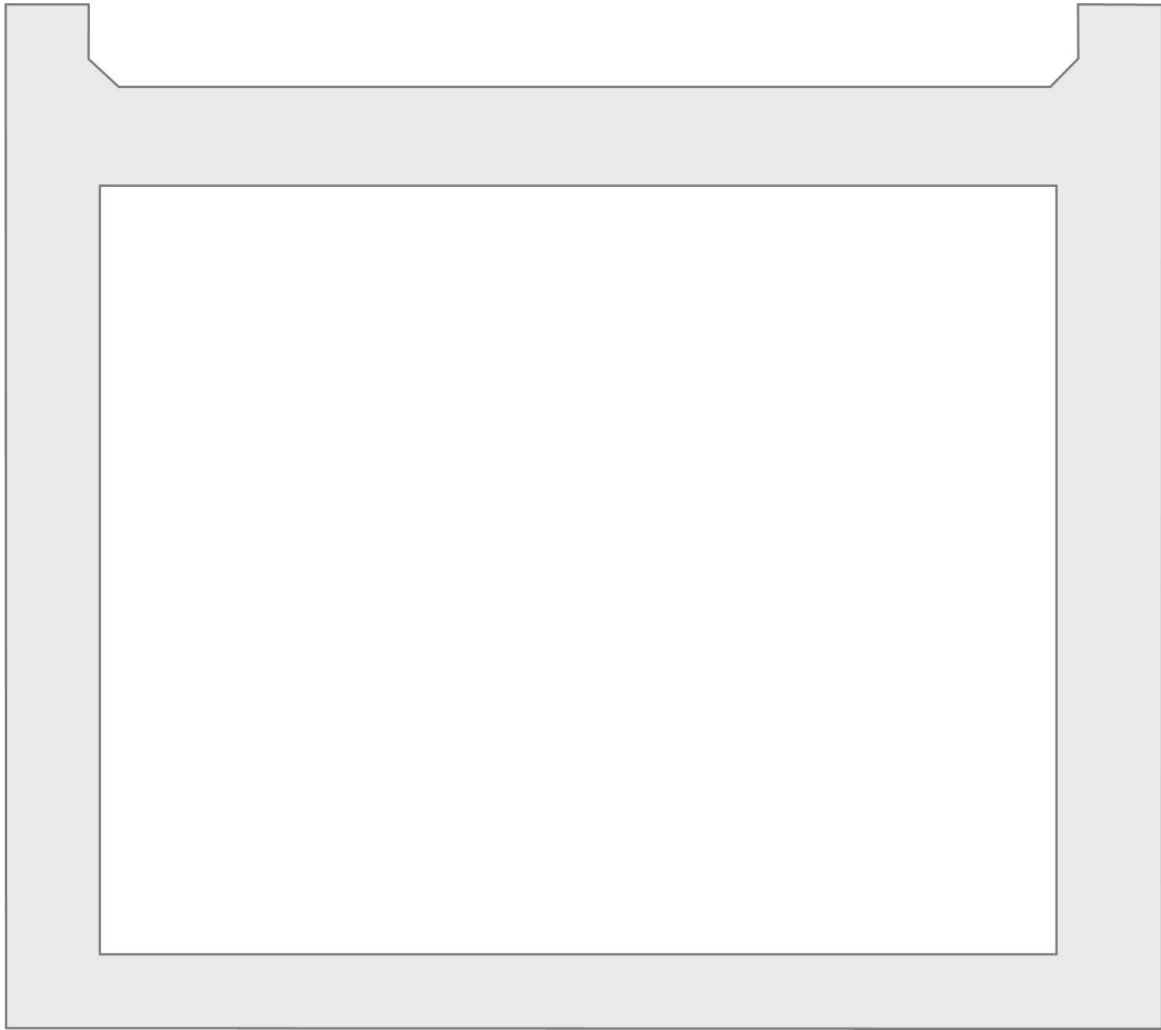
Thermal Control Layer



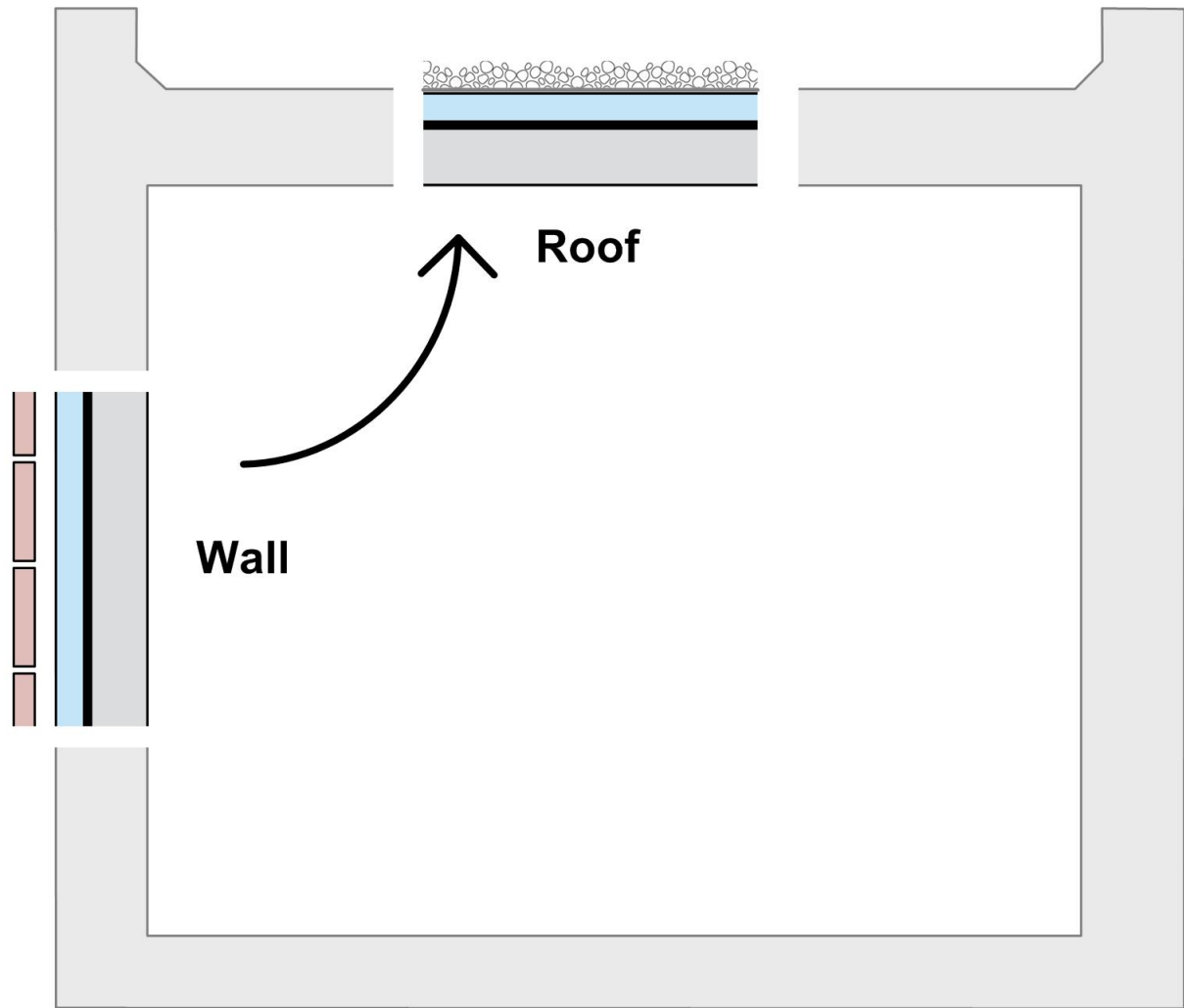


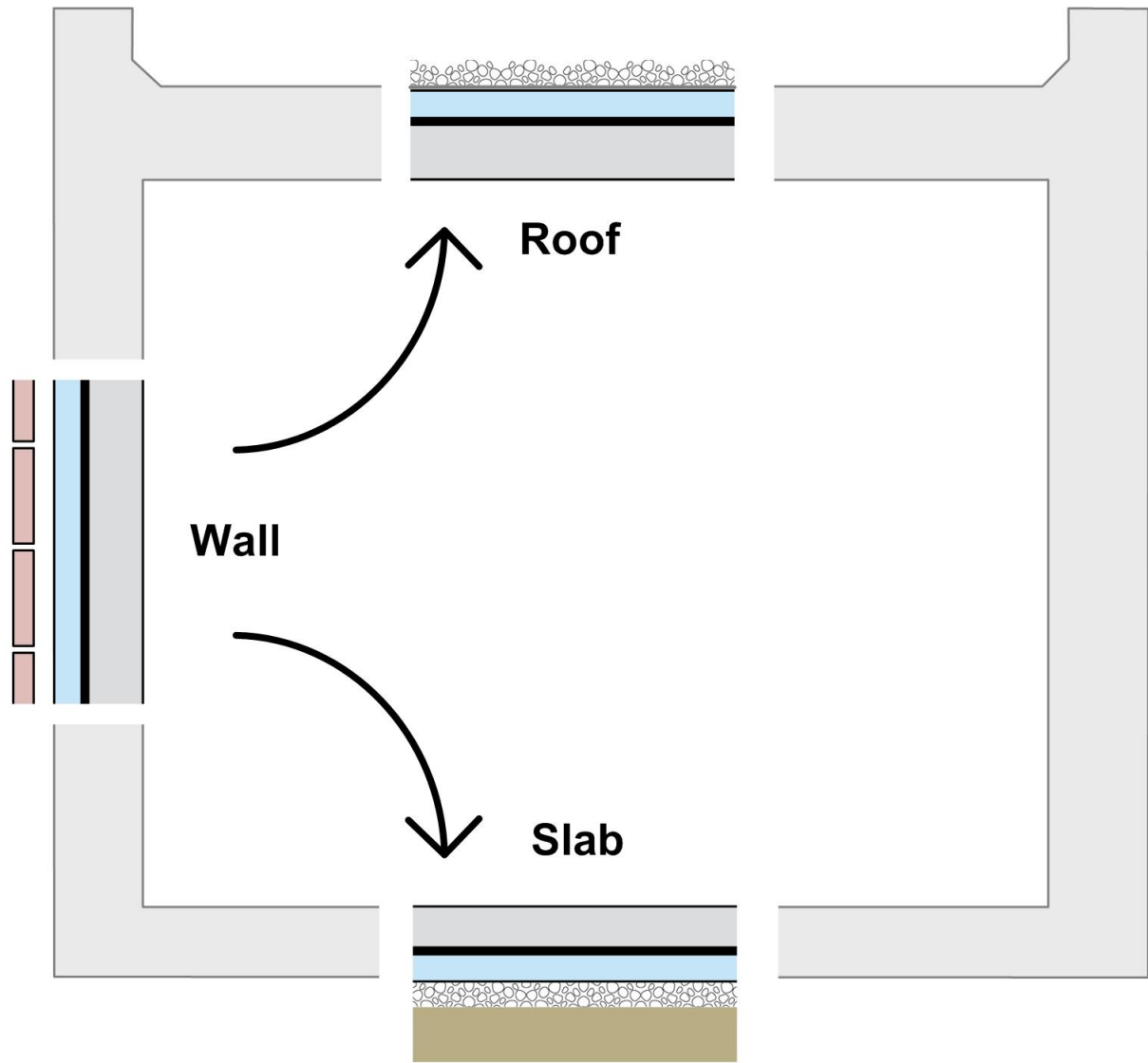
- ← Ballast
- ← Filter fabric
- ← Control layers
- ← Roof structure

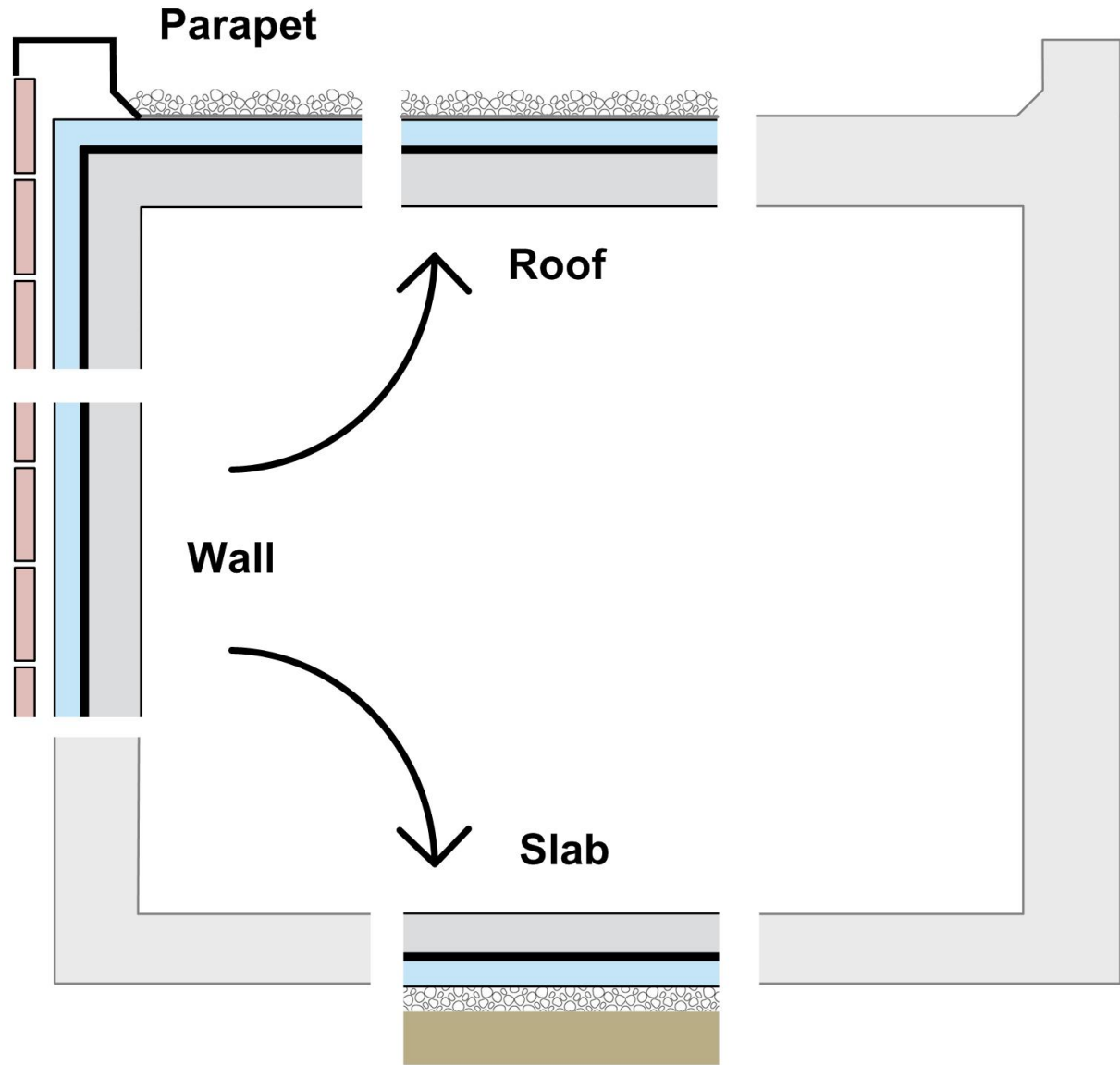


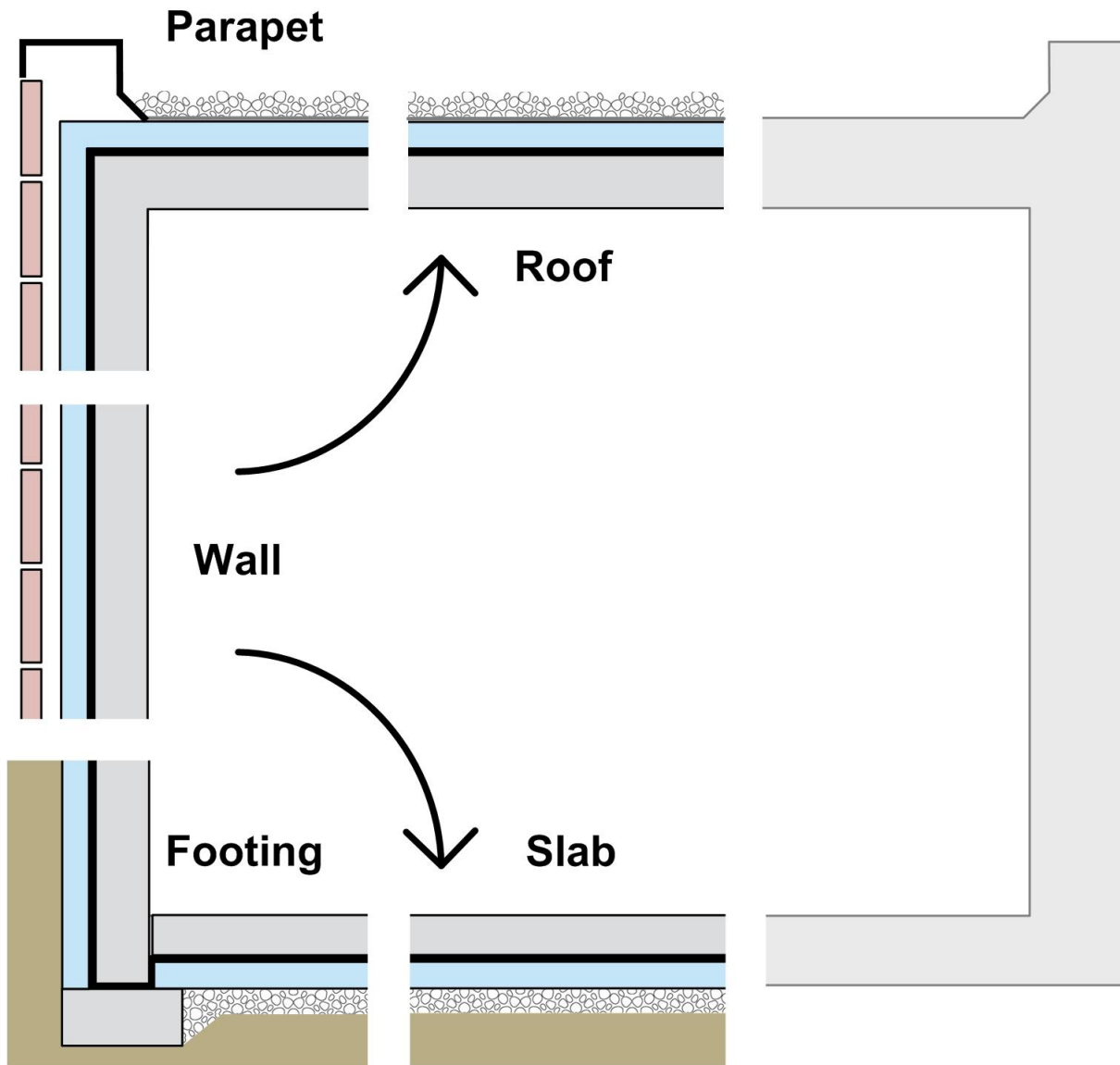


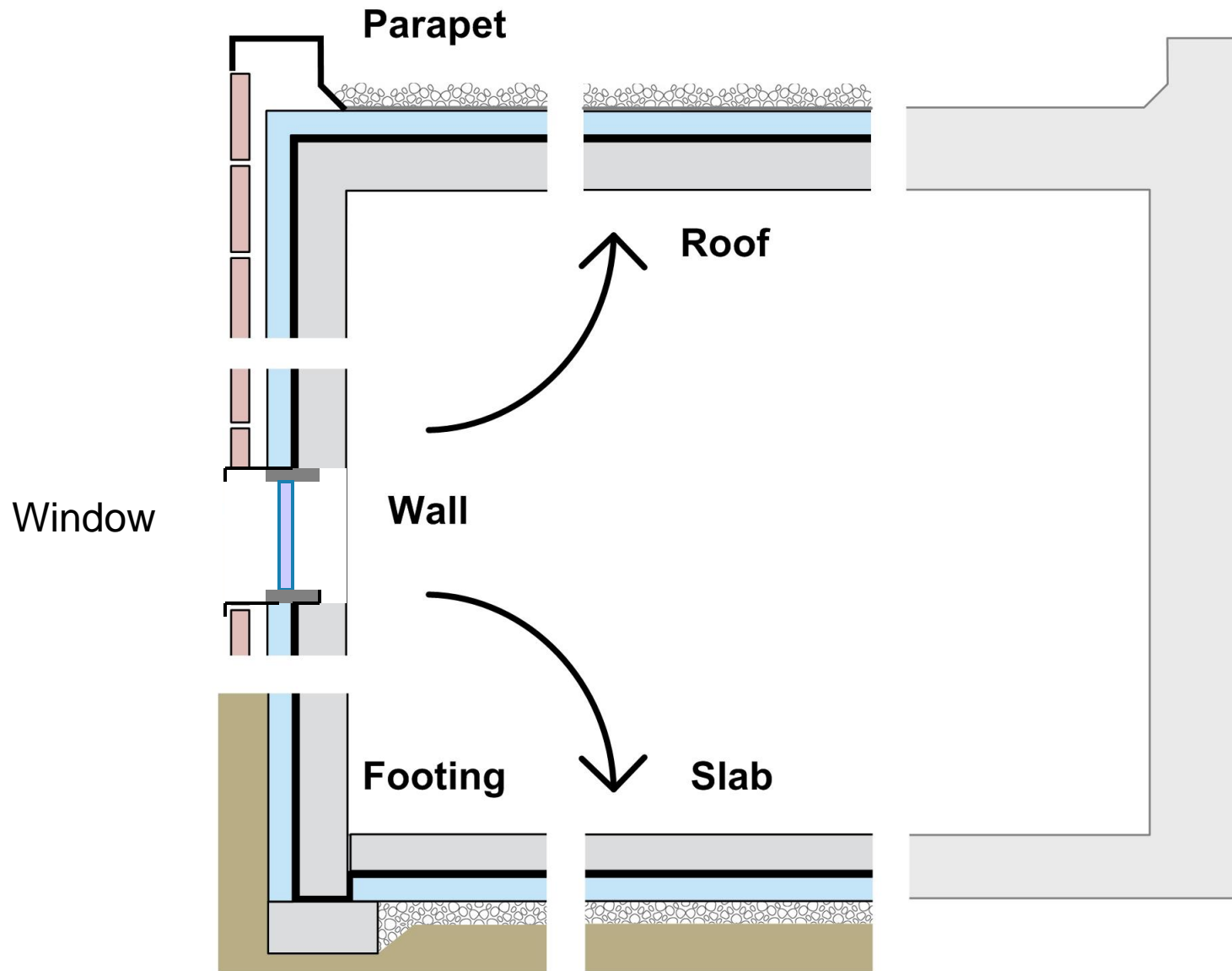


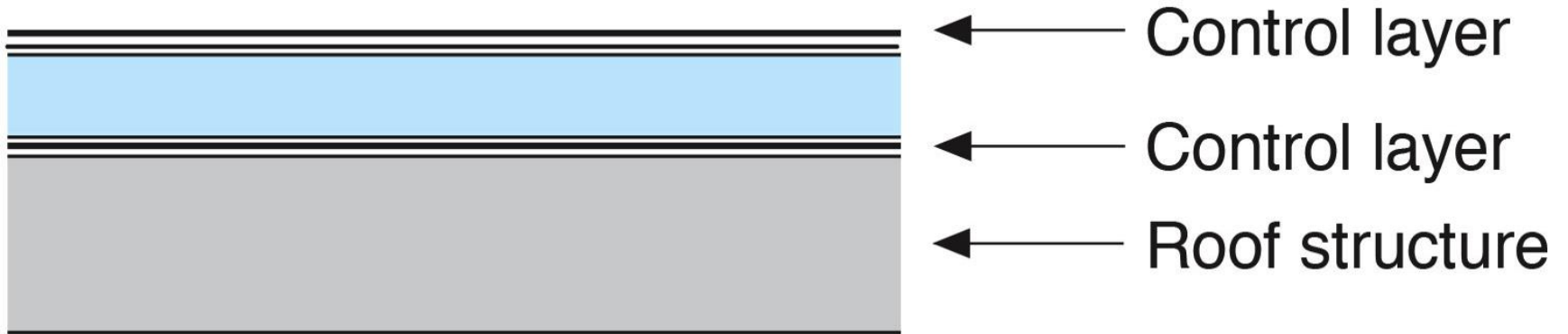


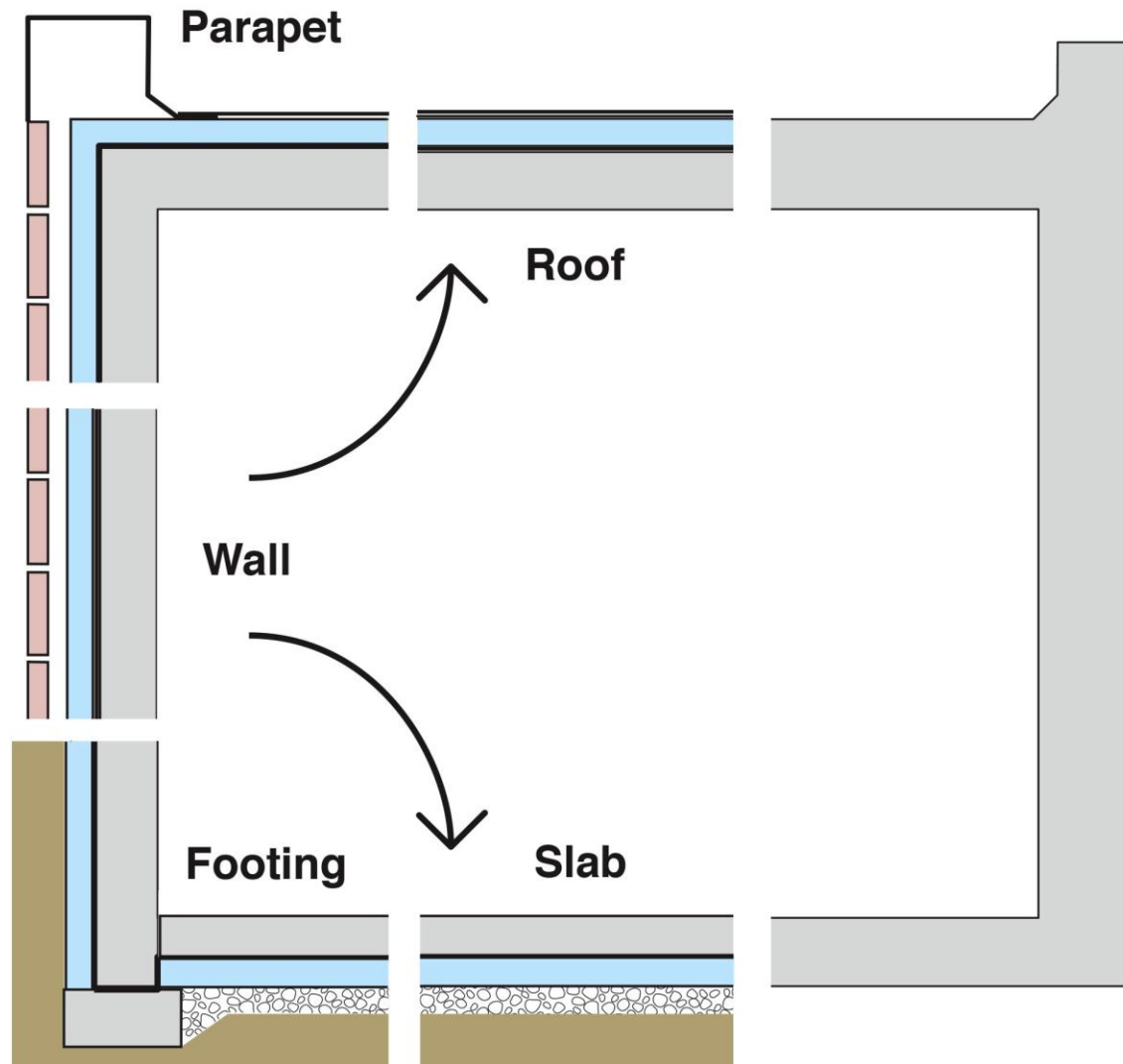


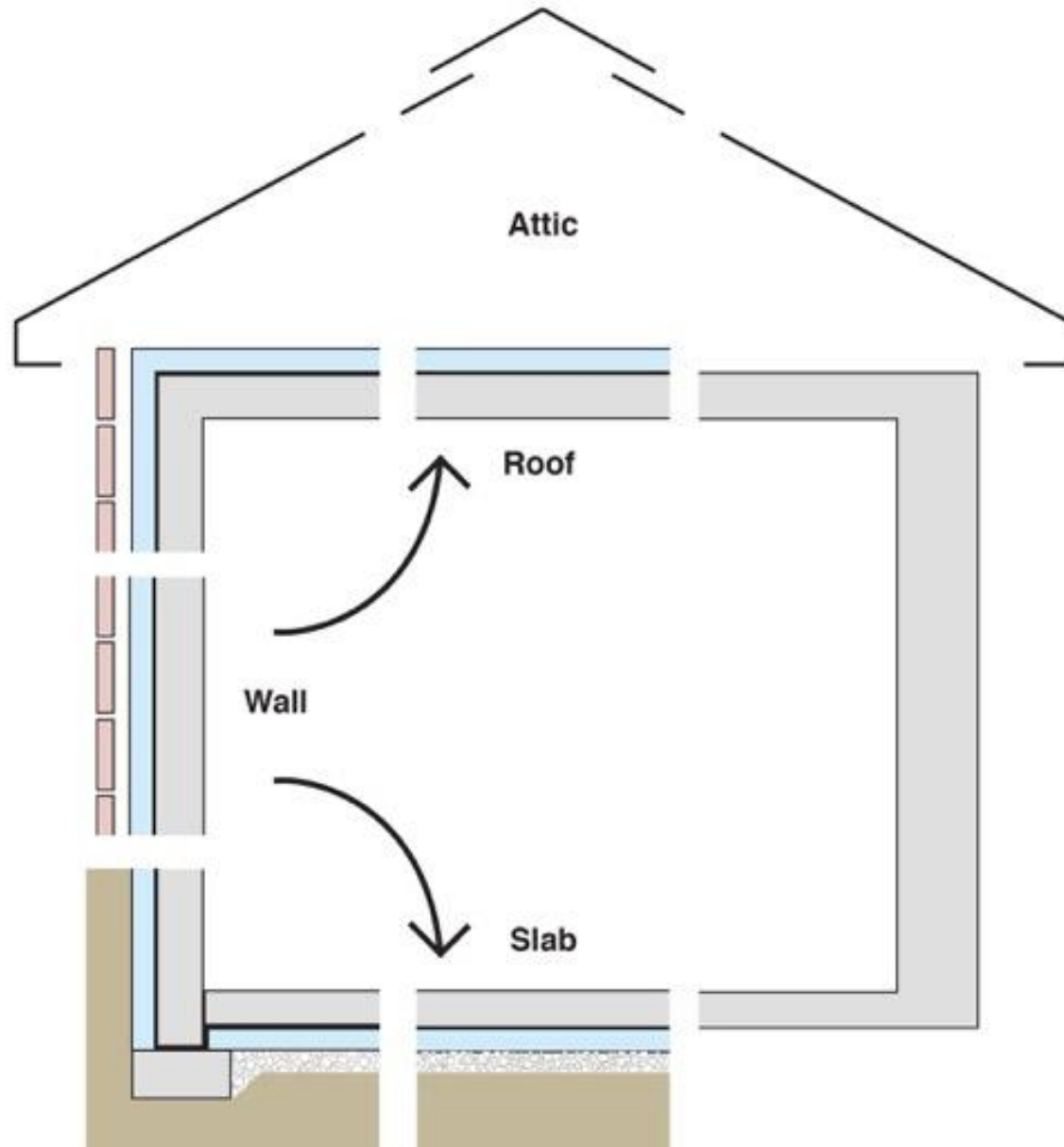


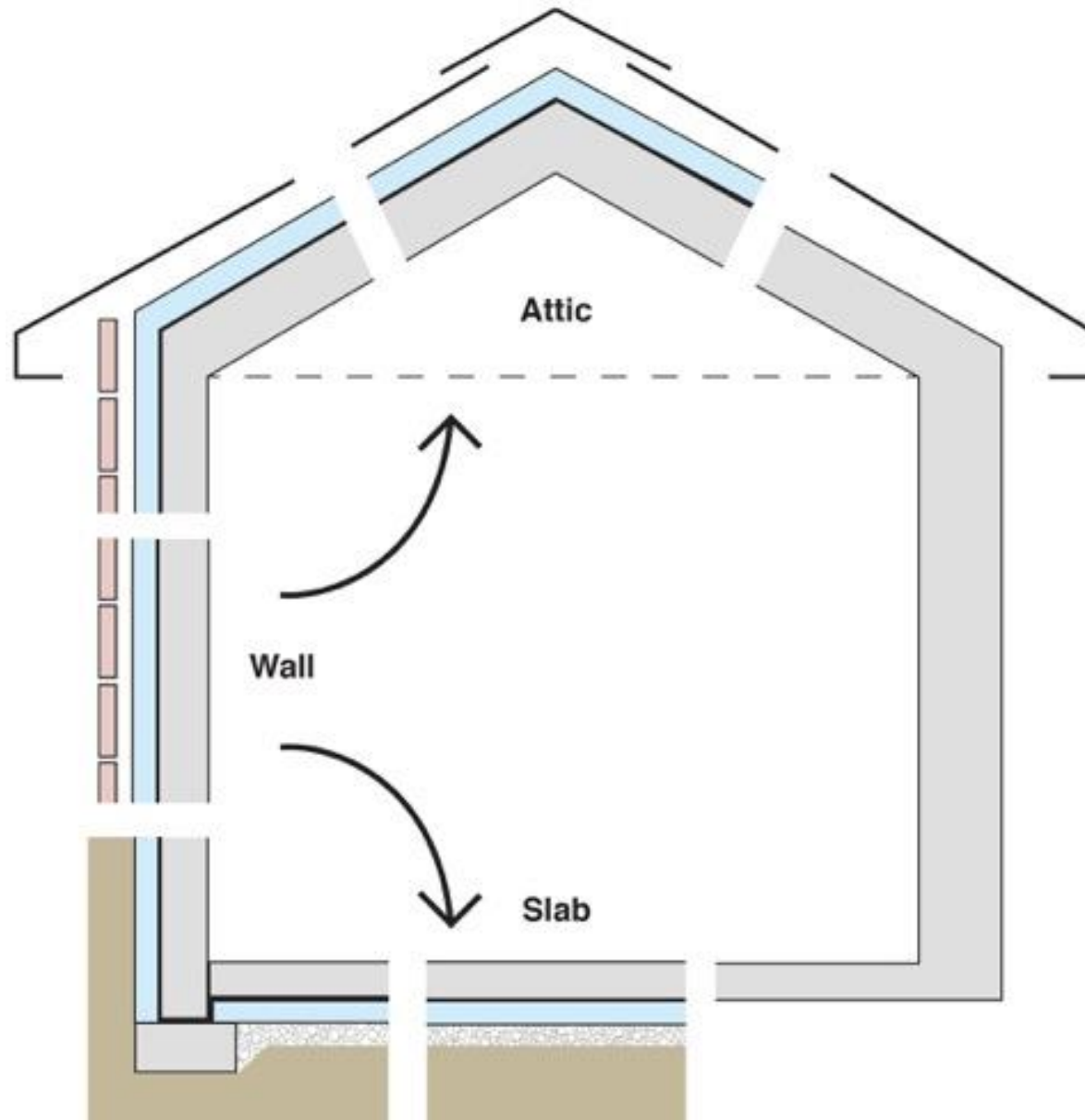


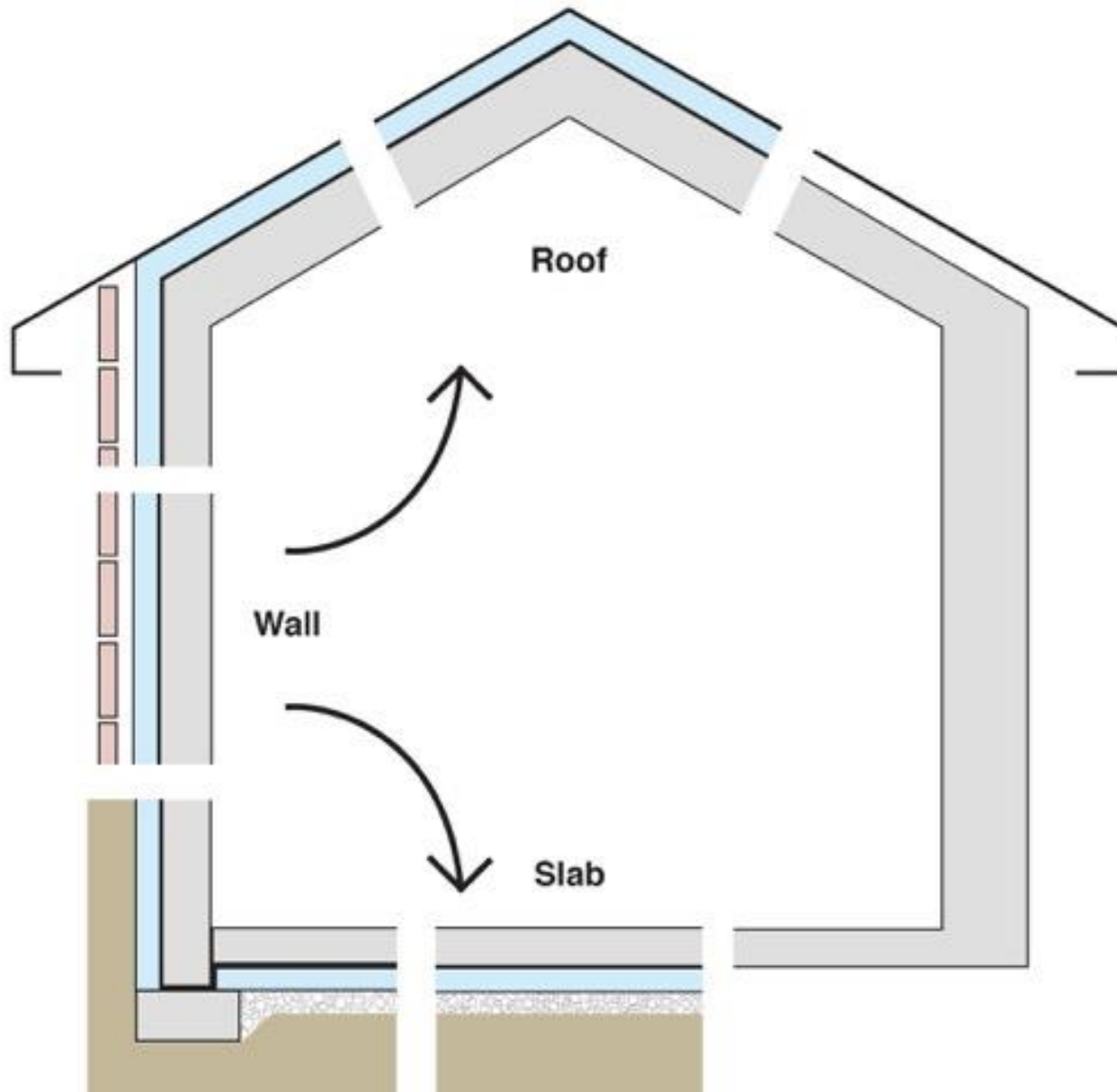




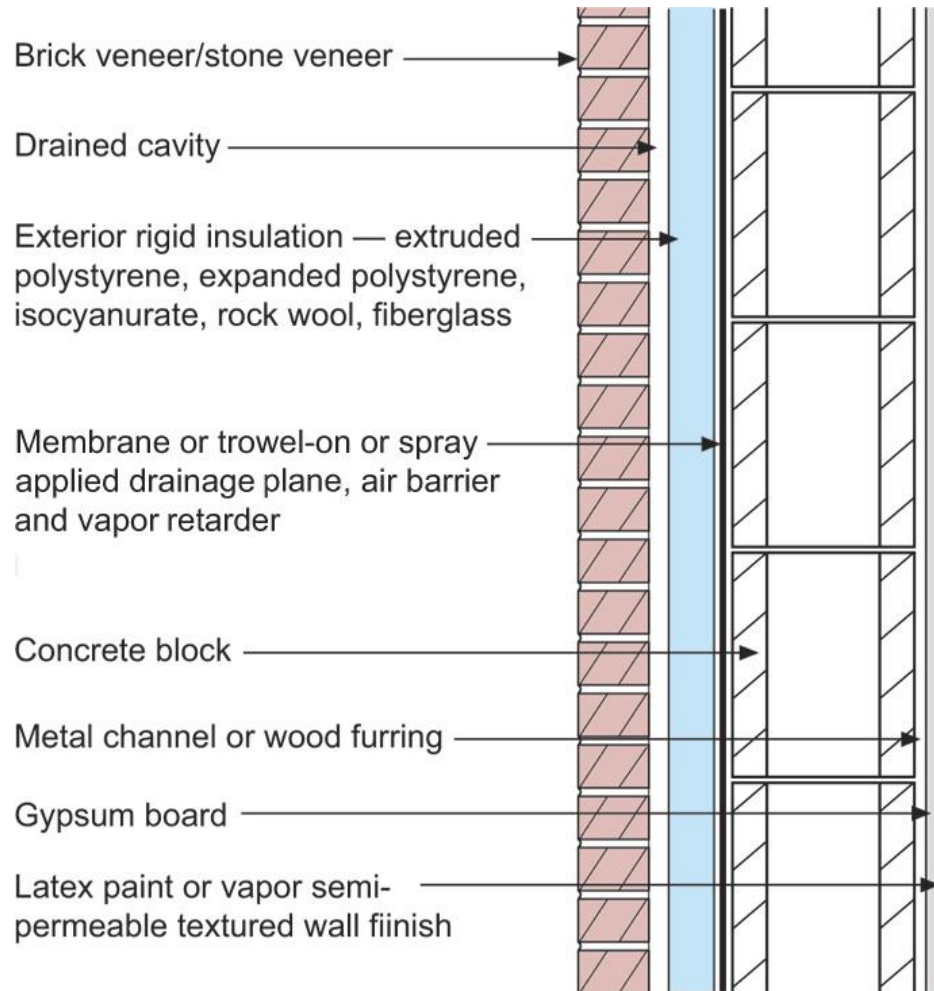




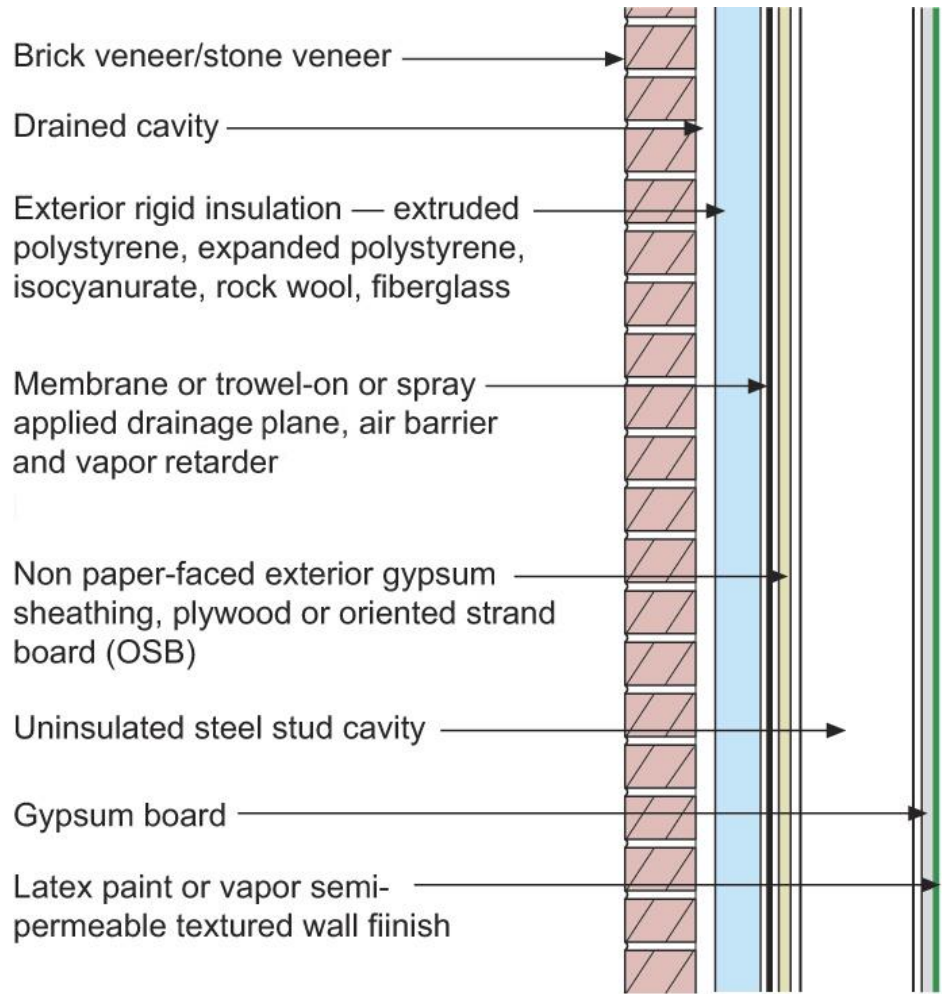


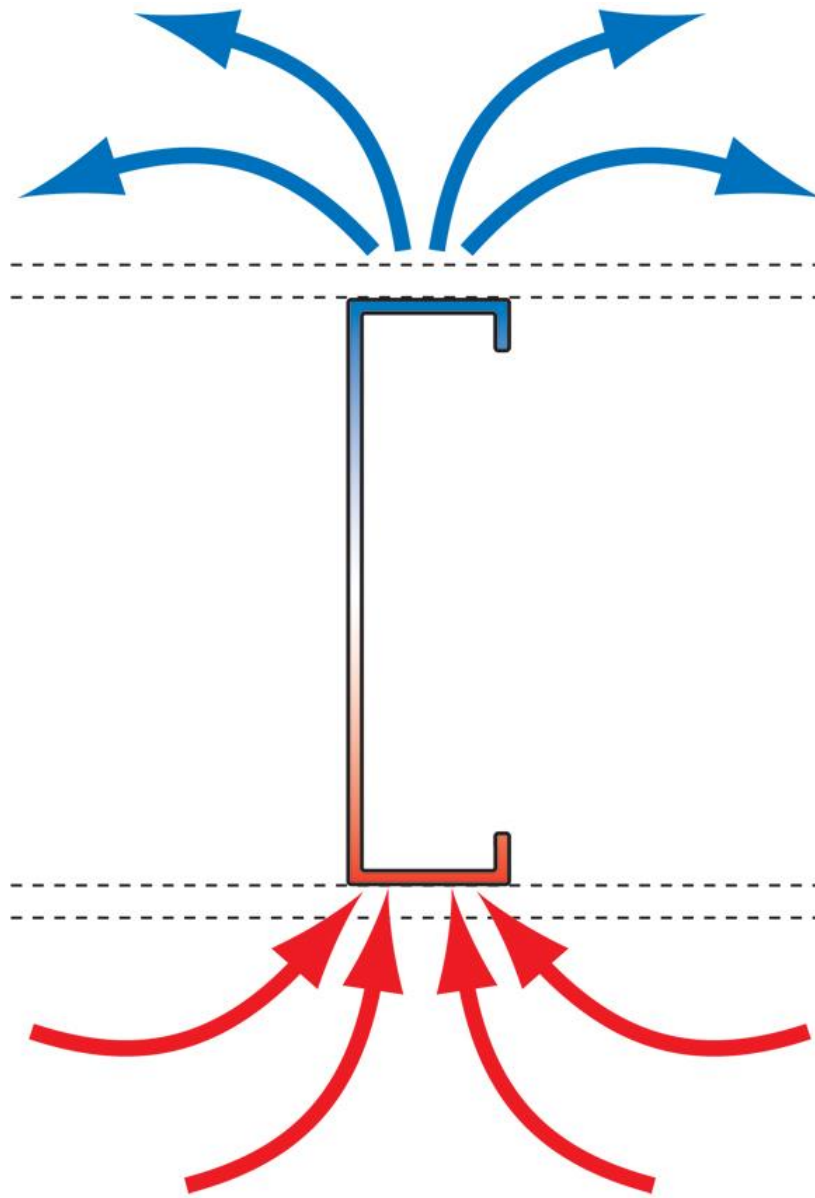


Configurations of the Perfect Wall

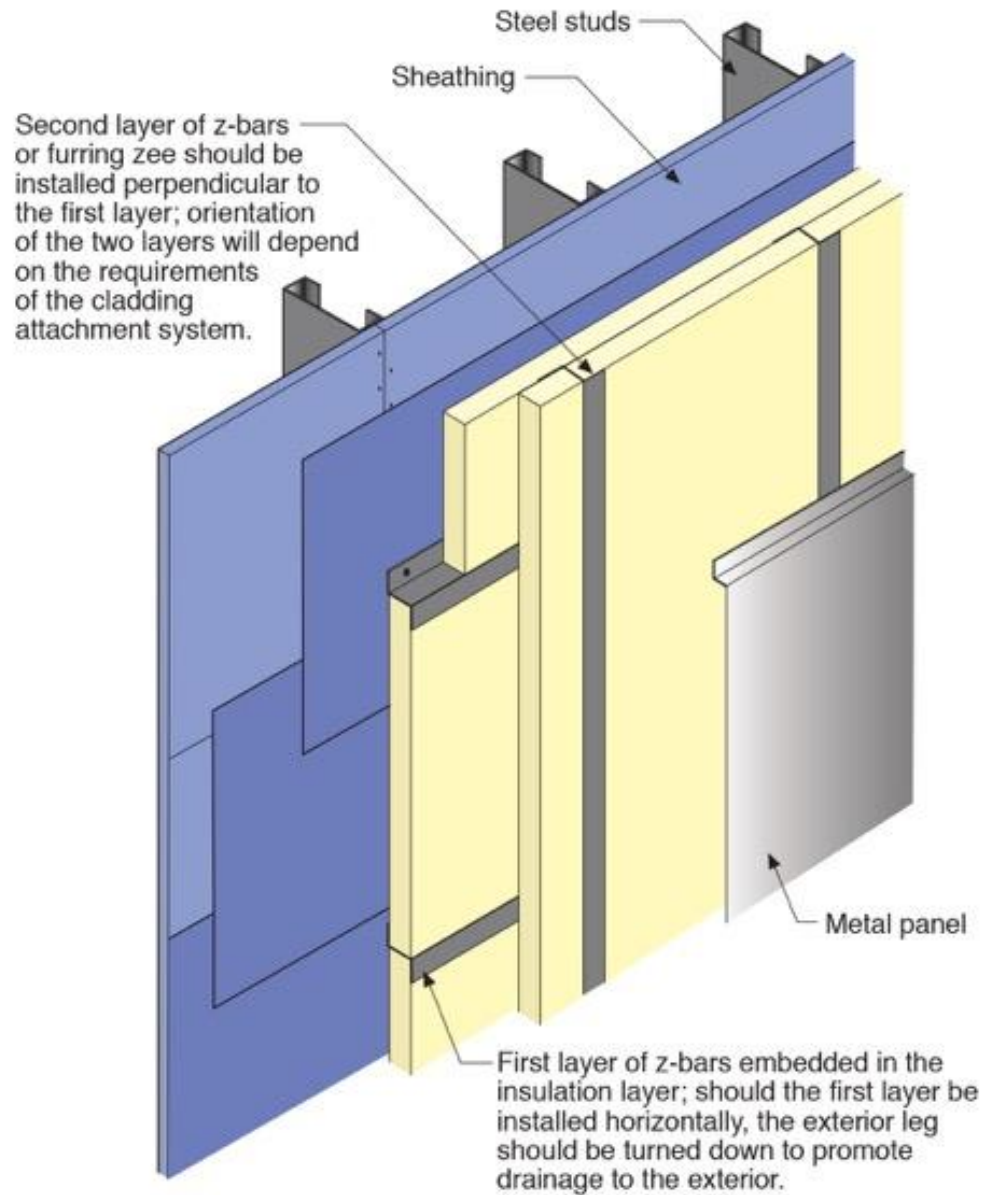


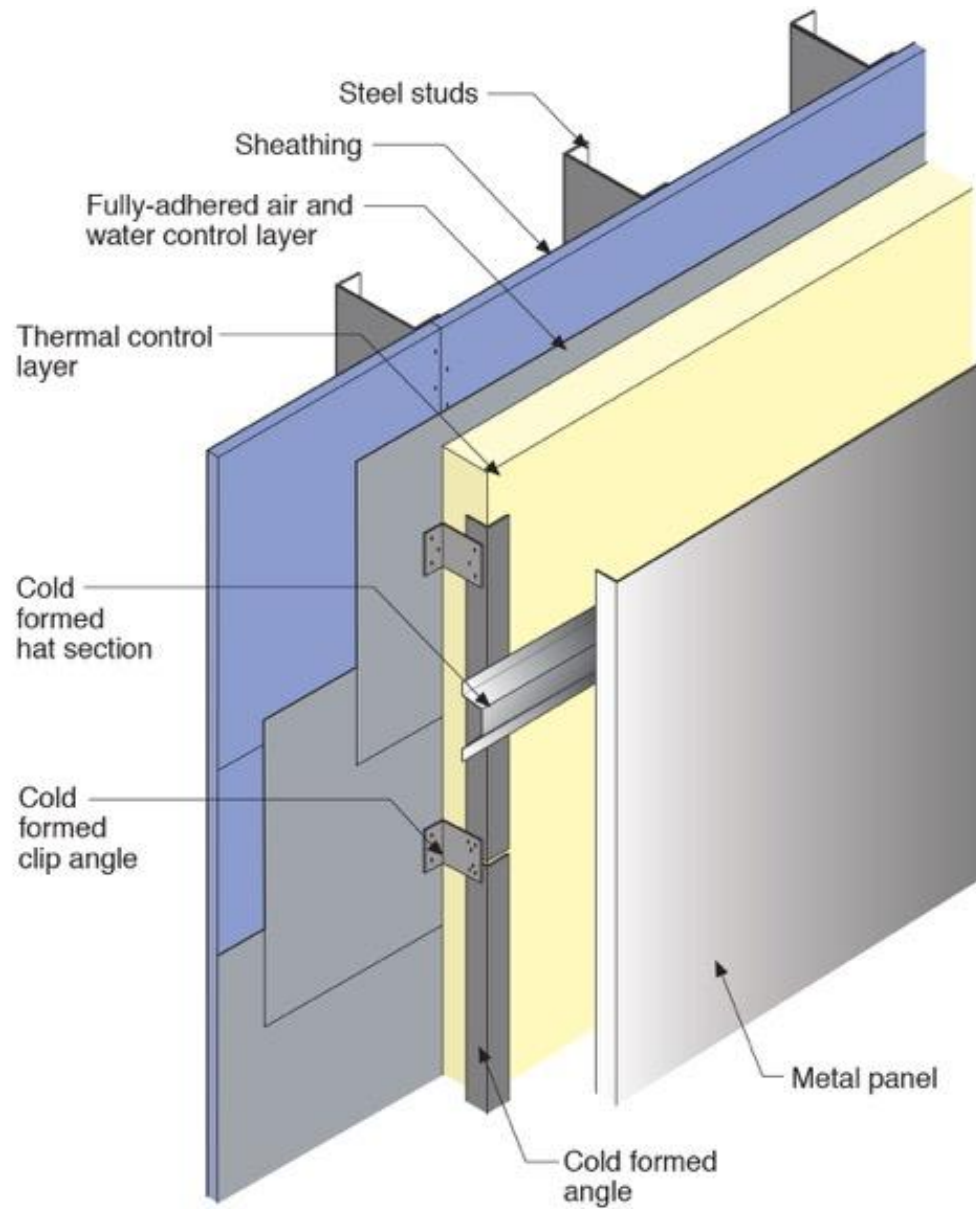
Vapor Profile

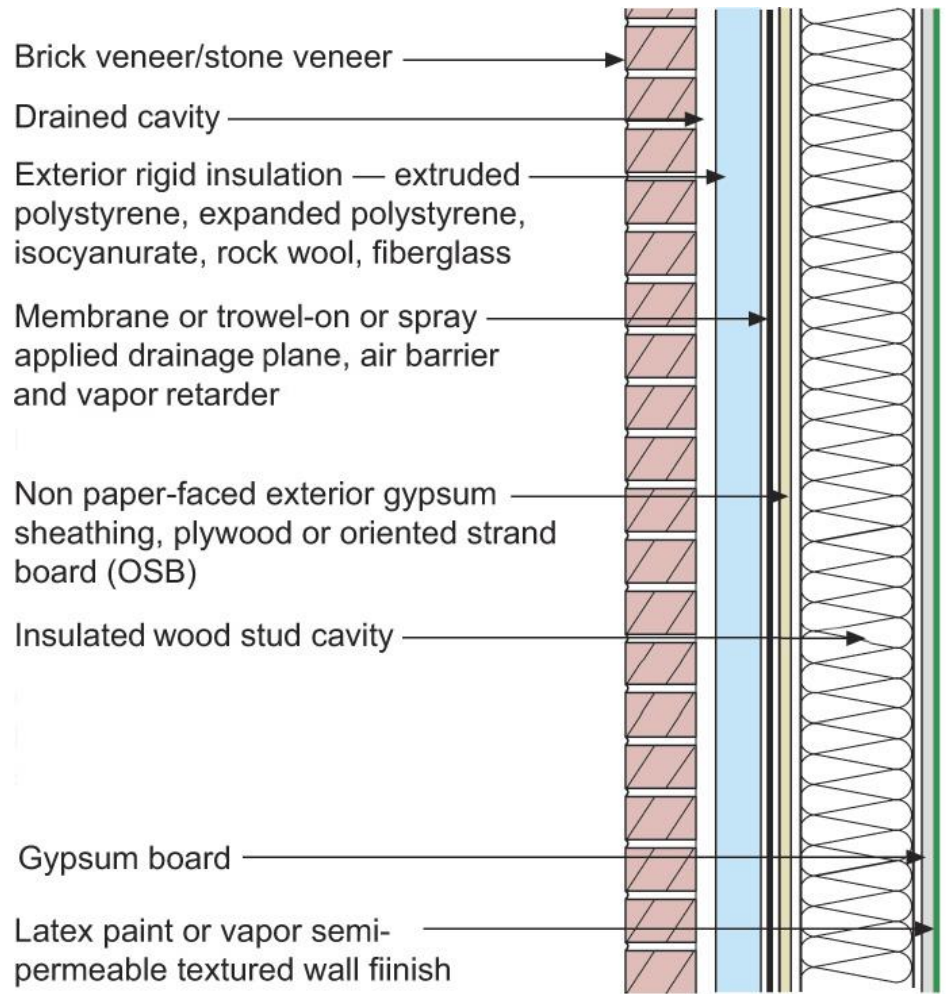








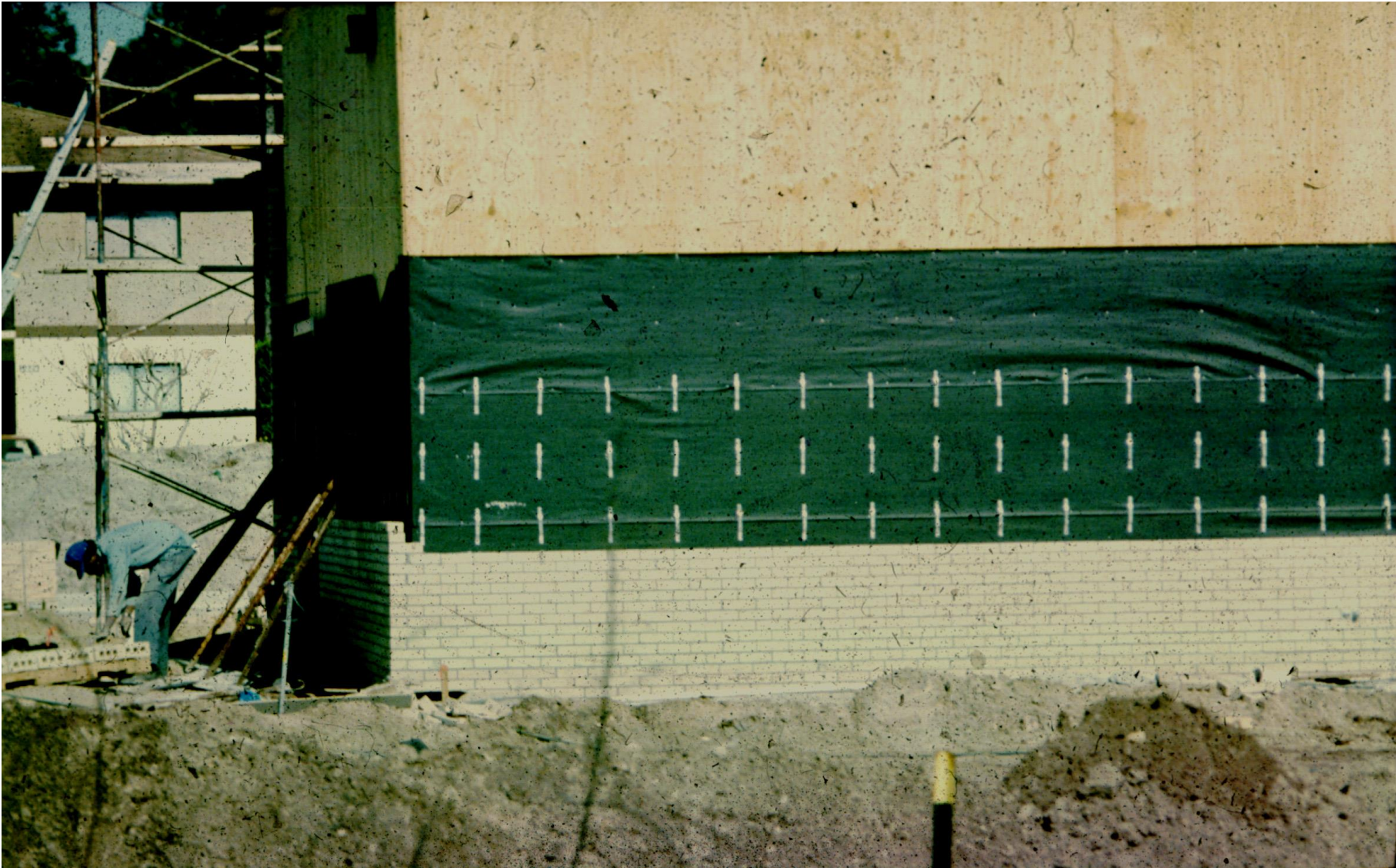


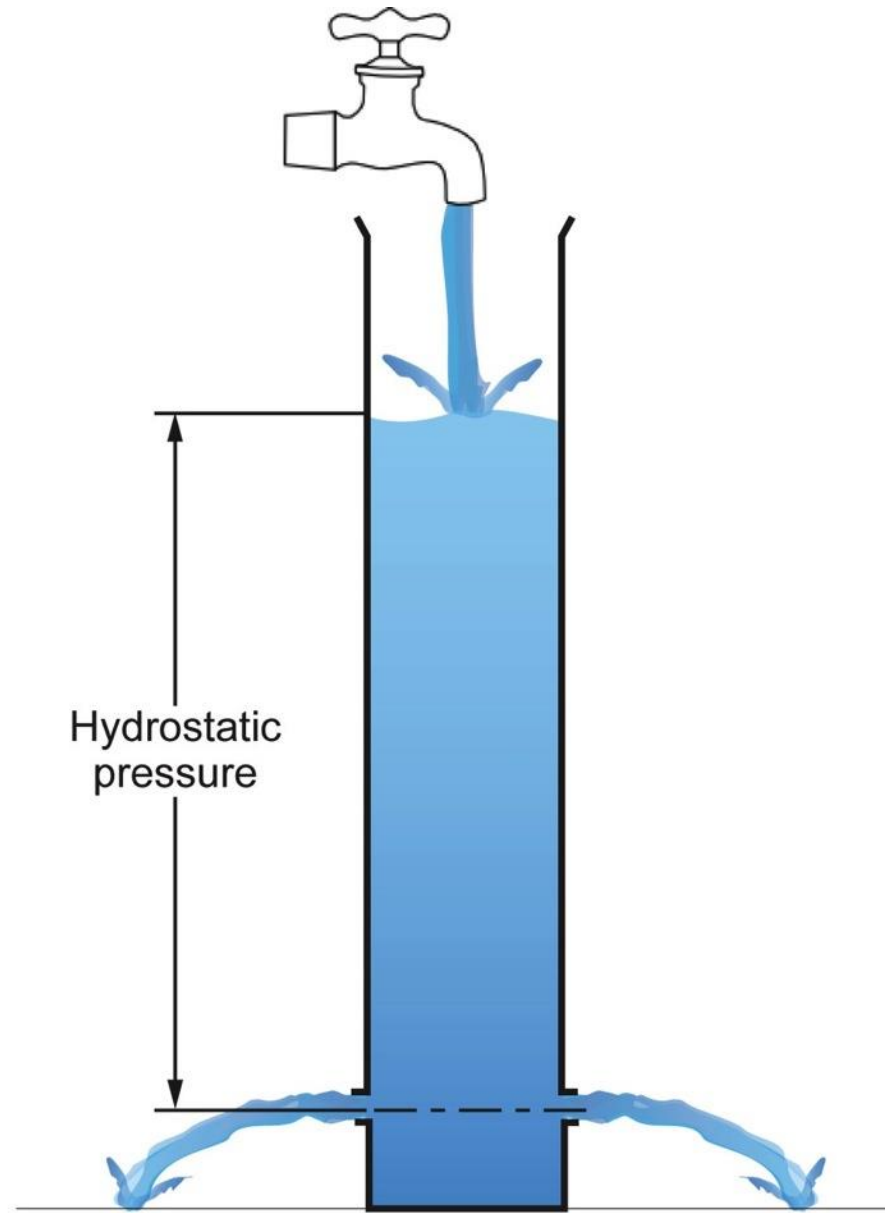
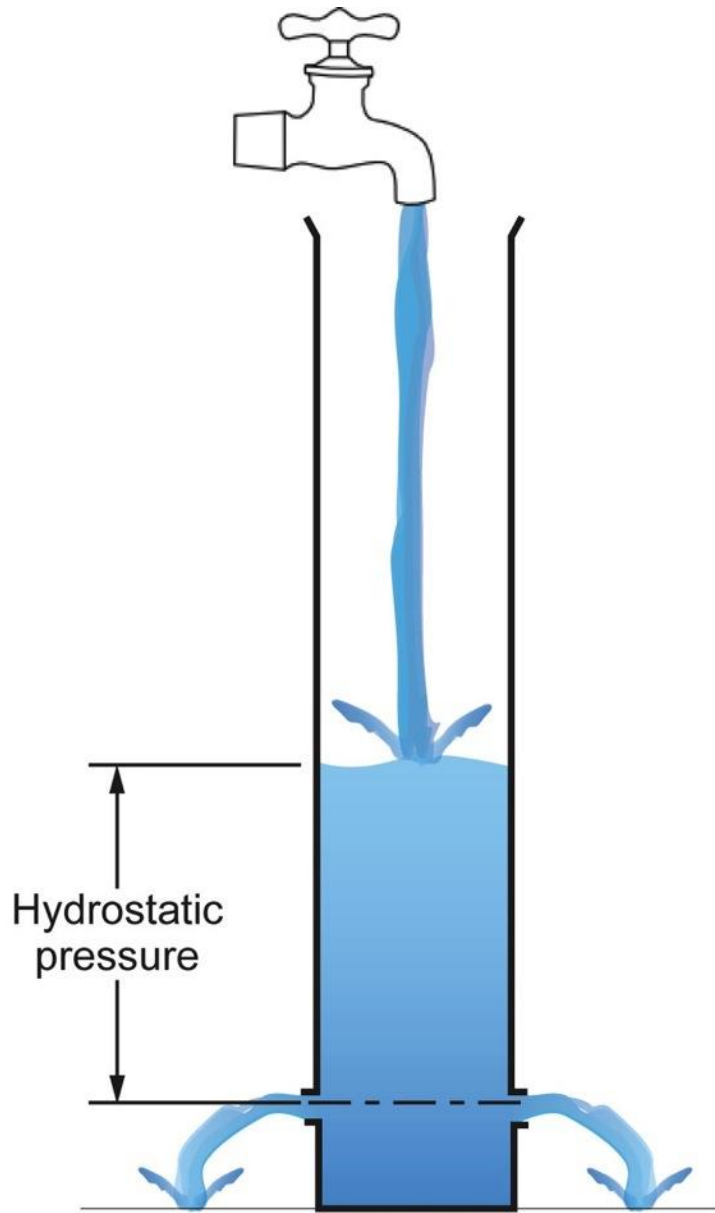


Rain



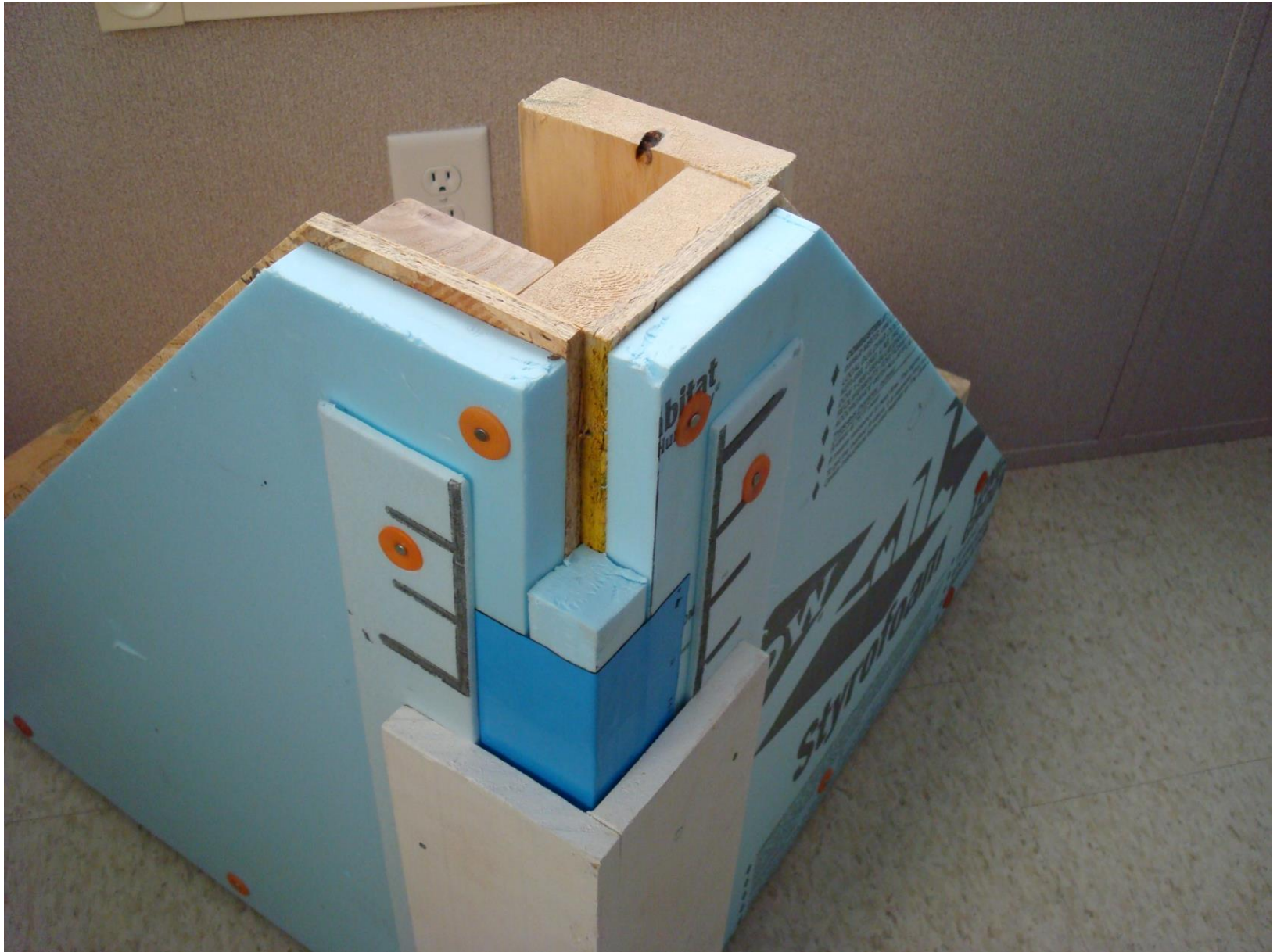




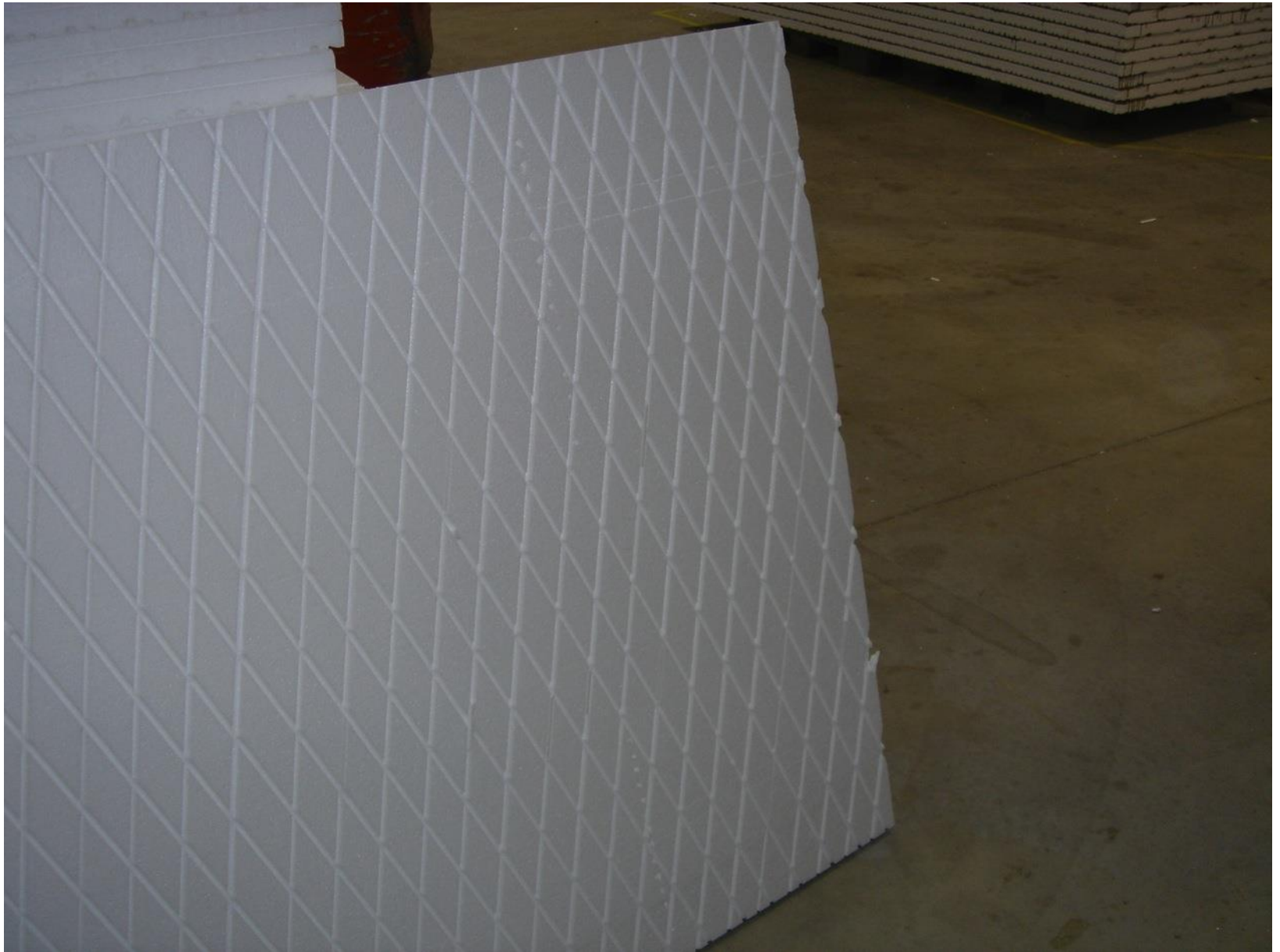




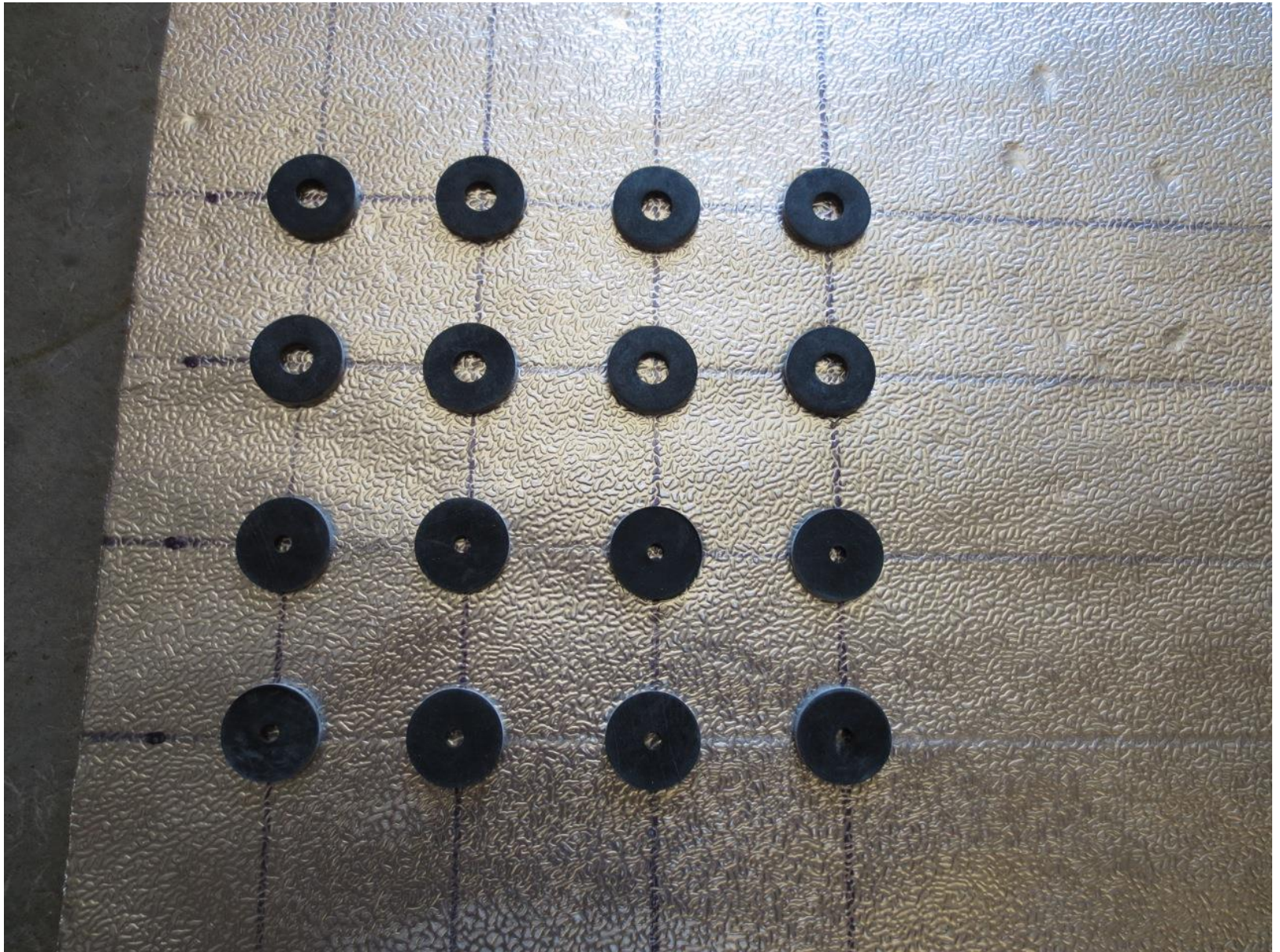








Rain Screen



Beer Screen?

