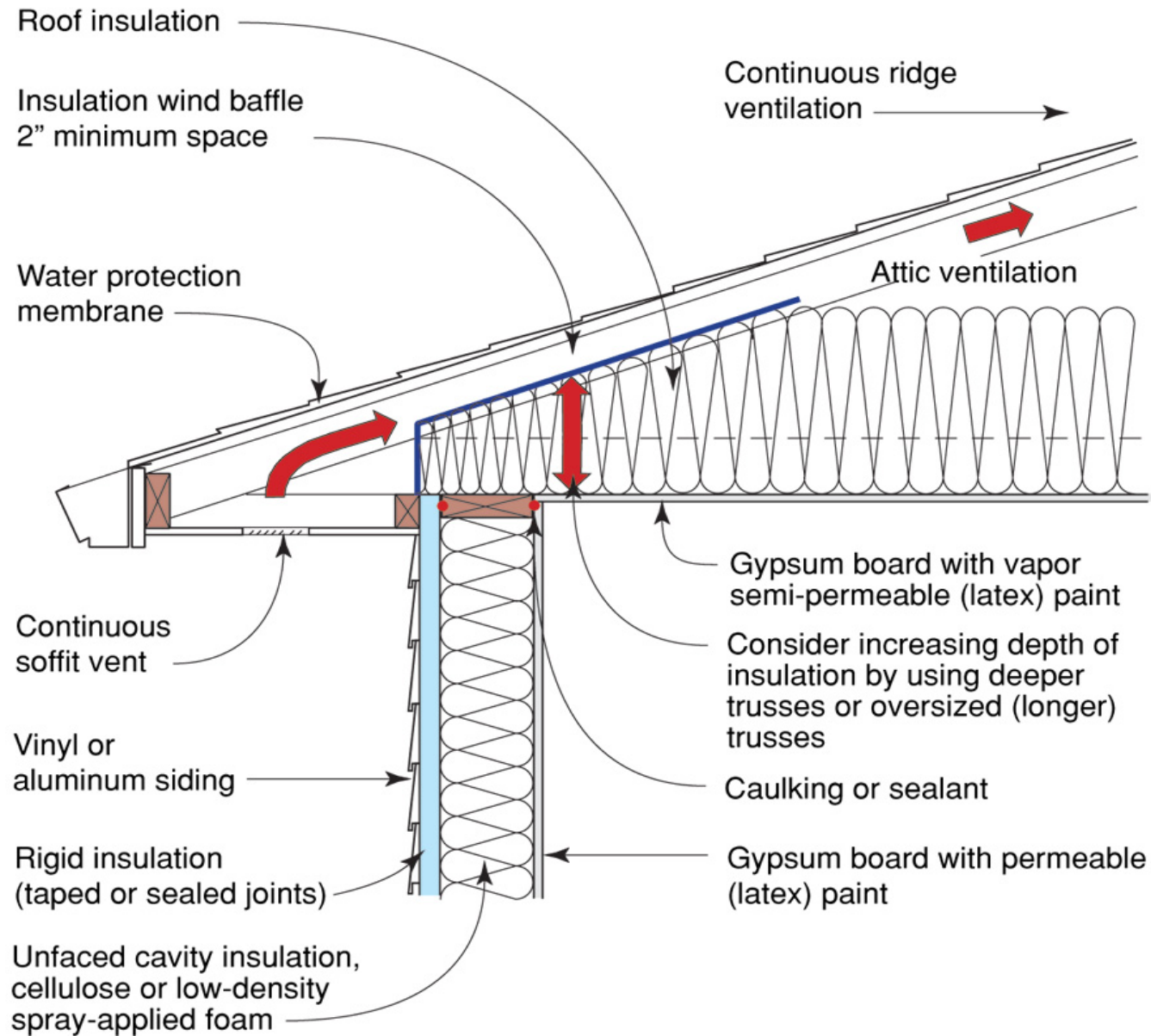


Joseph Lstiburek, Ph.D., P.Eng, ASHRAE Fellow

Building Science

Roofs

presented by www.buildingscience.com





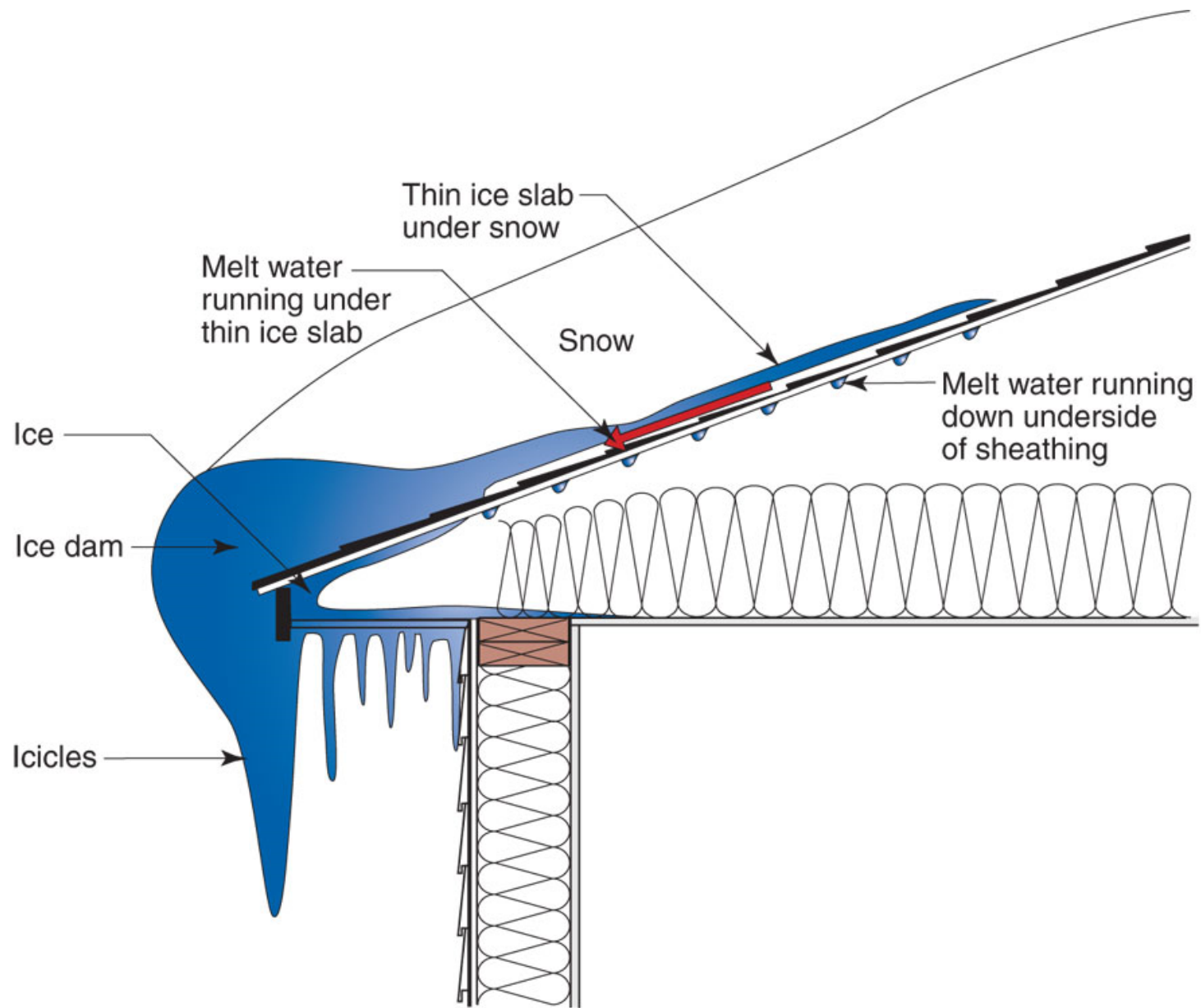








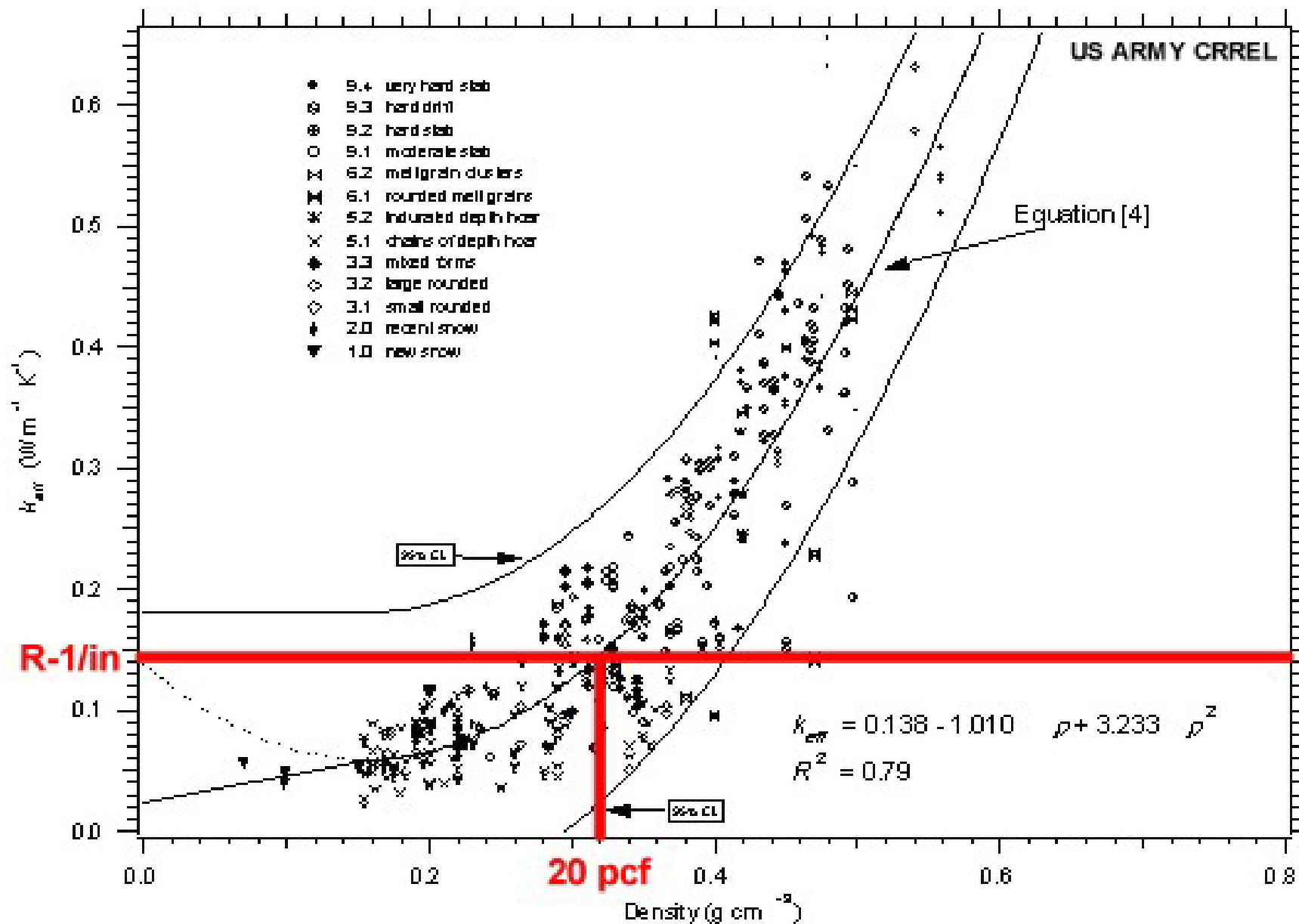






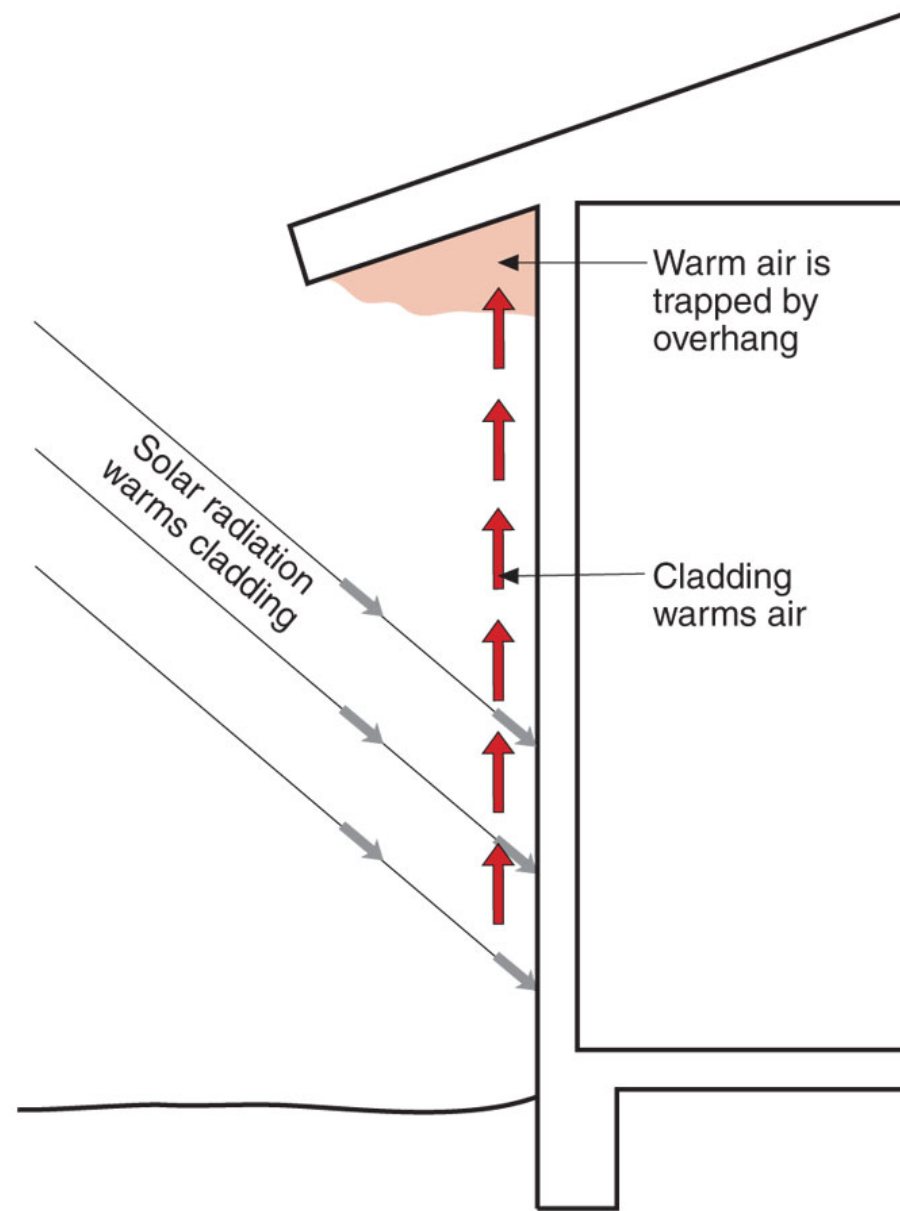










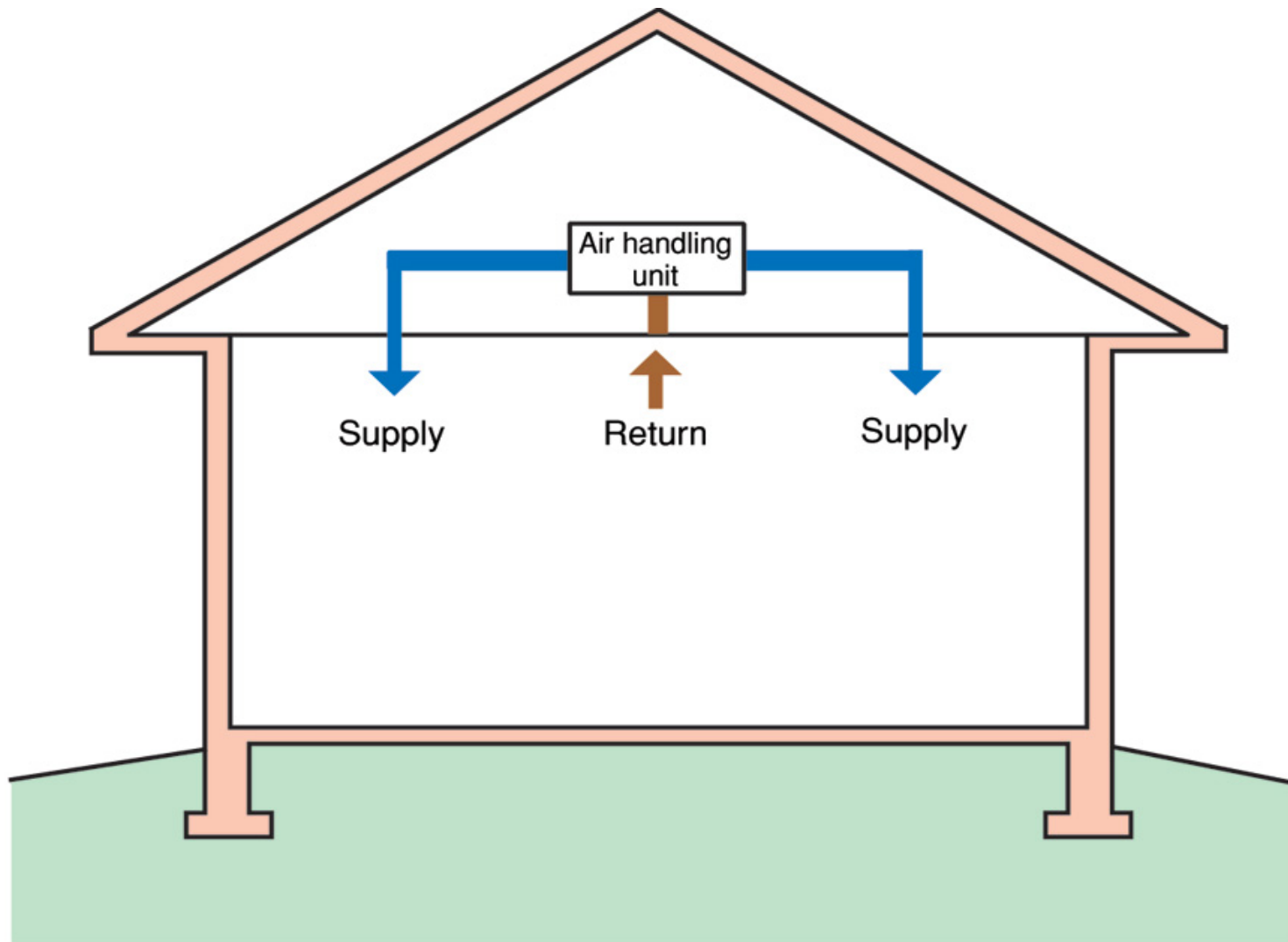




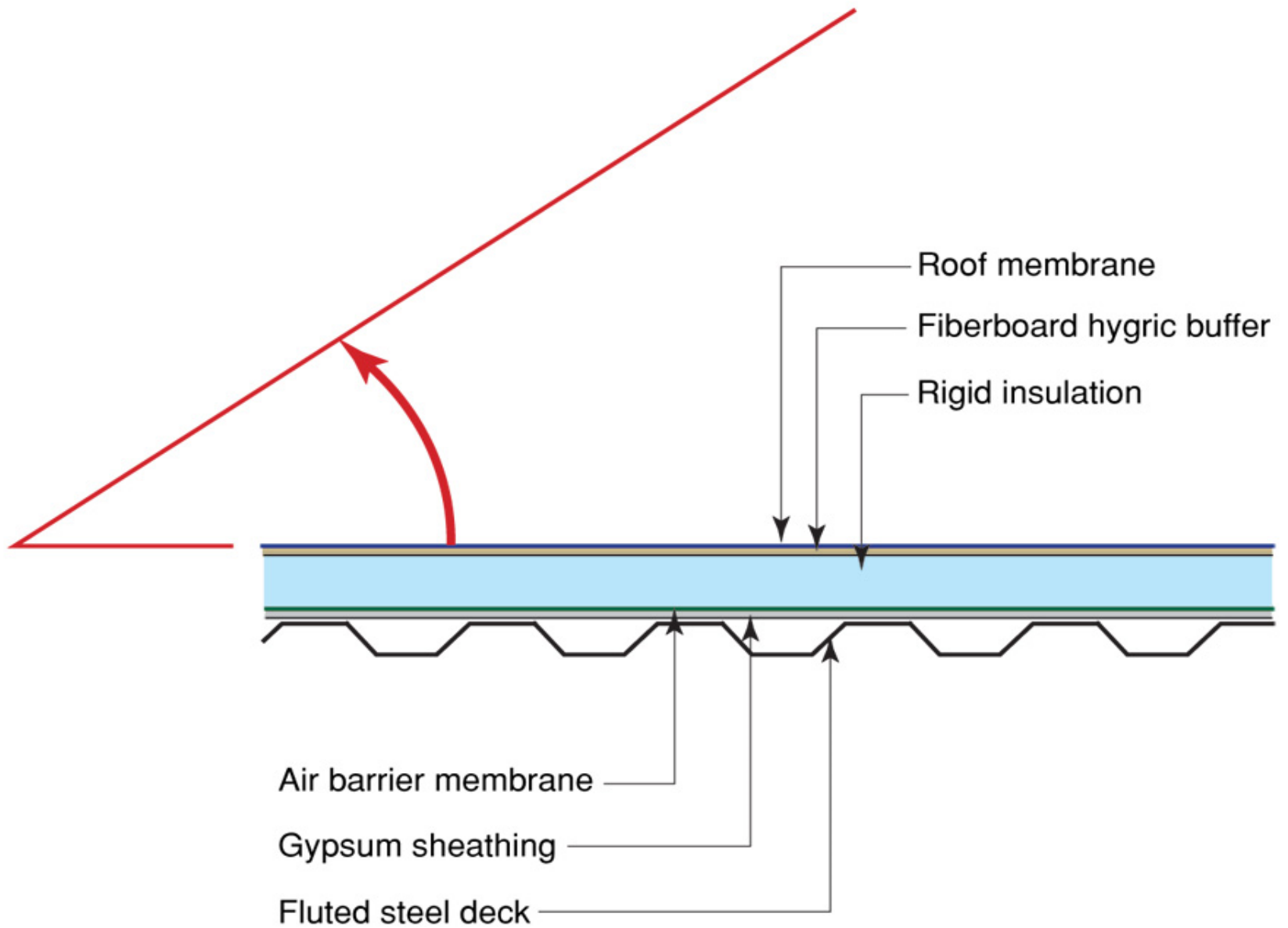


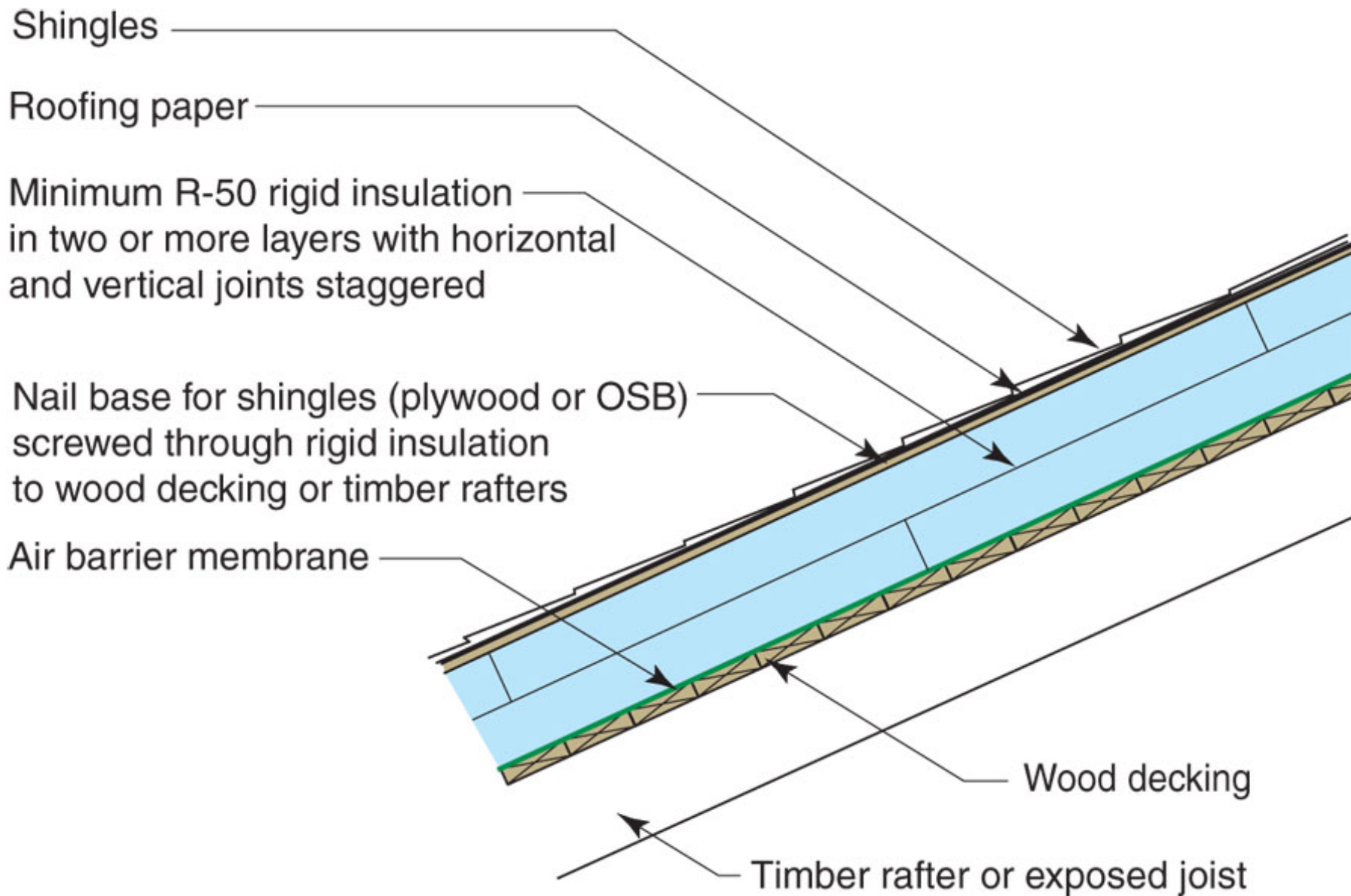


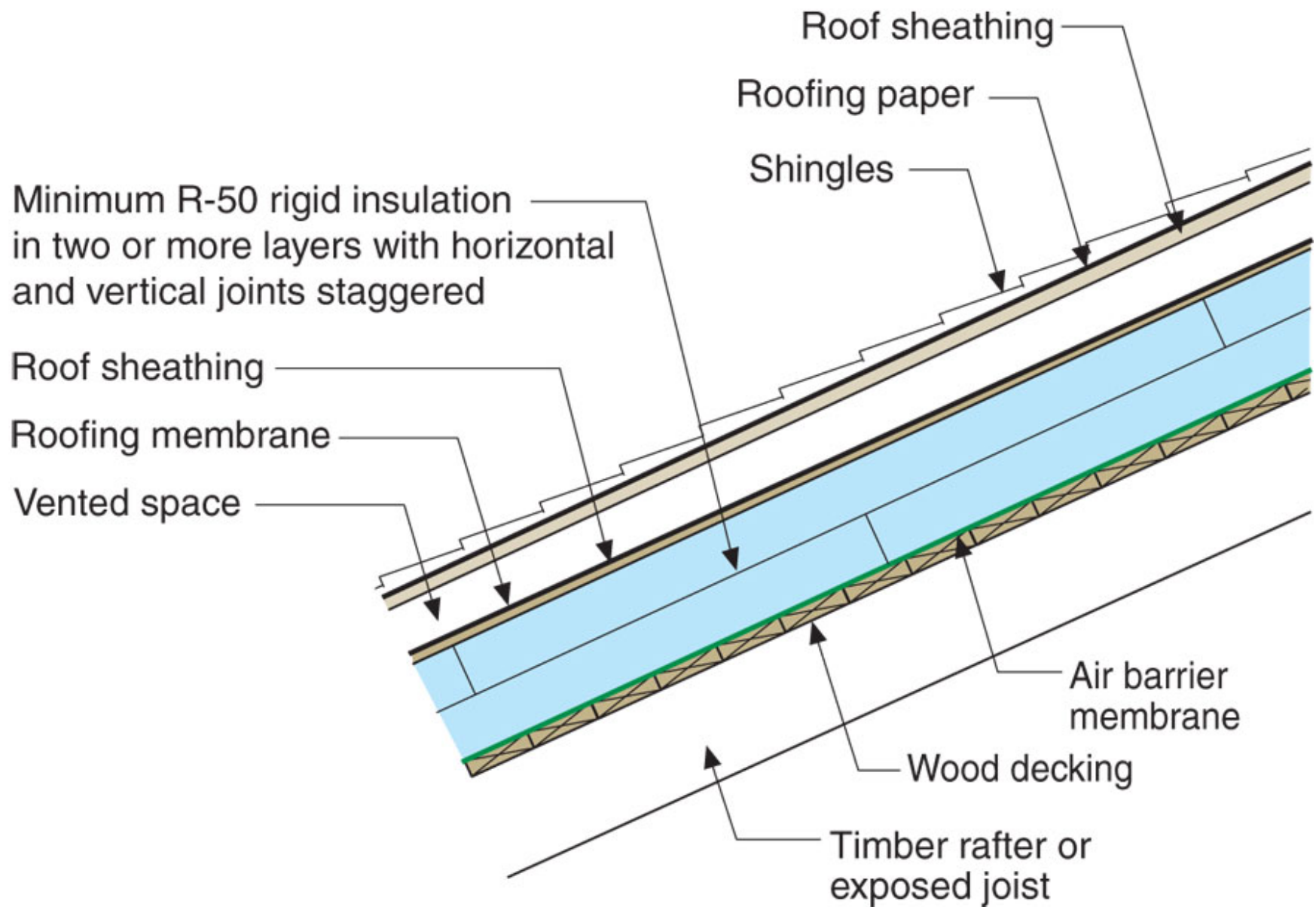


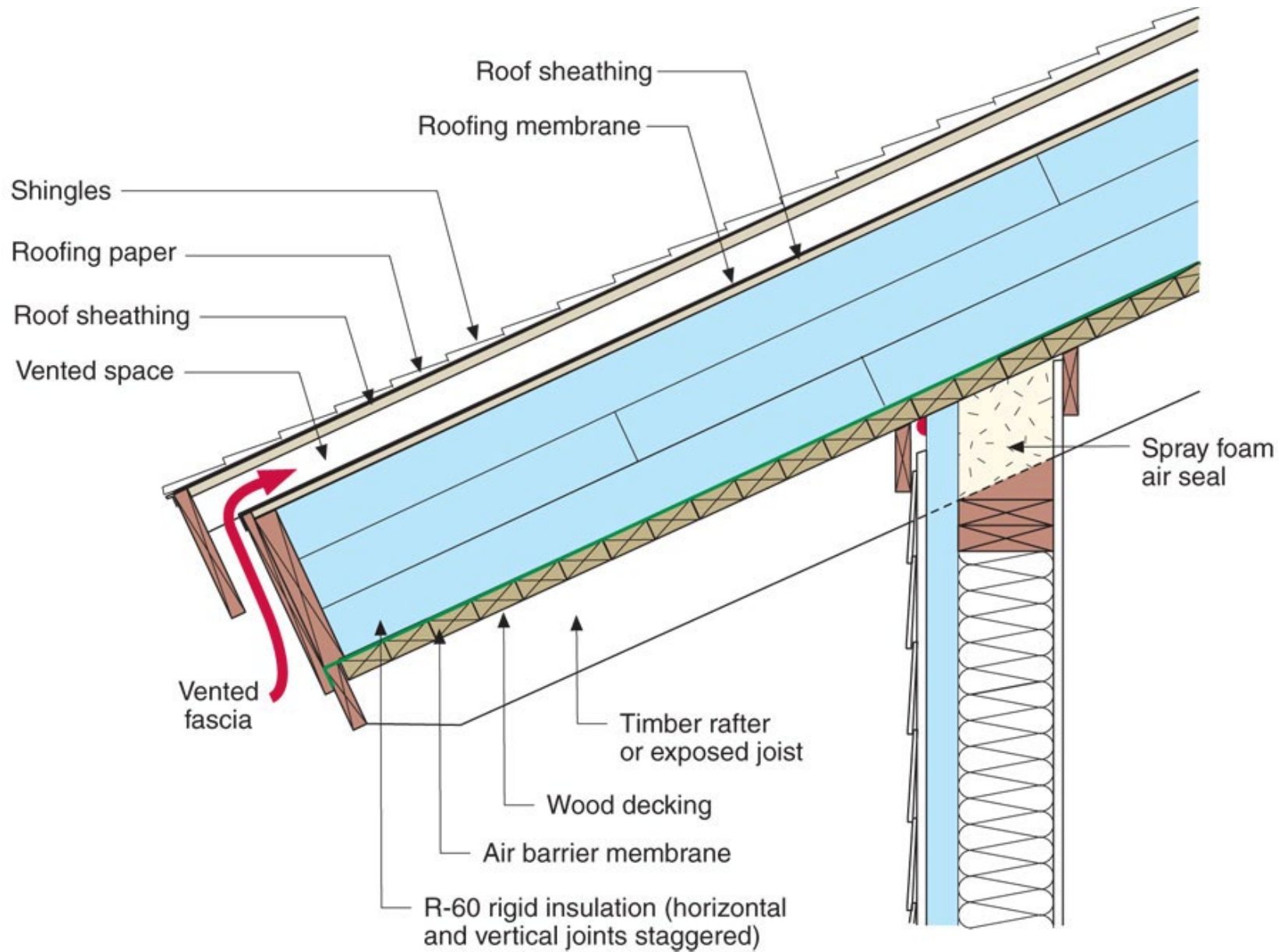


Note: Colored shading depicts the building's thermal barrier and pressure boundary. The thermal barrier and pressure boundary enclose the conditioned space.



























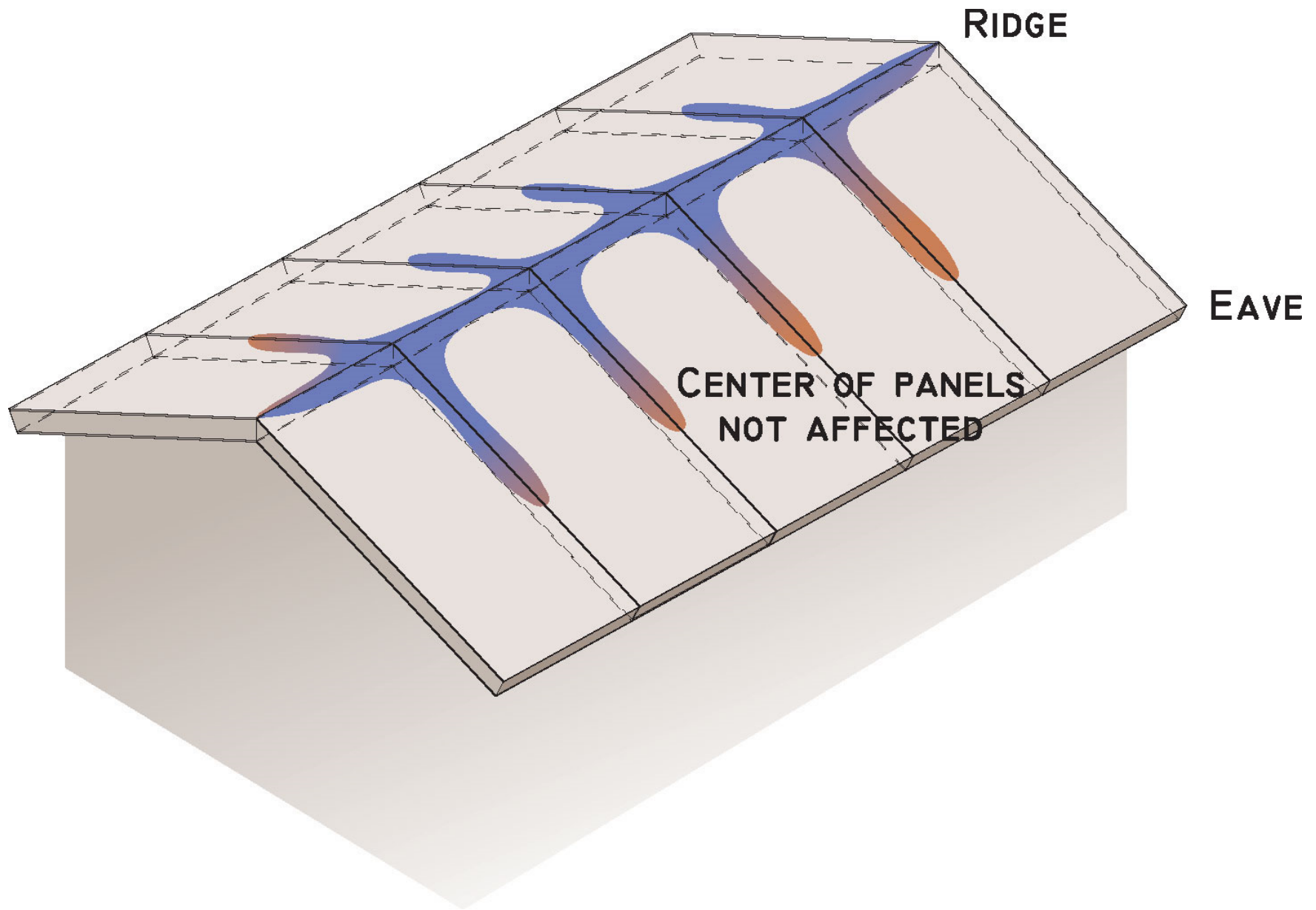




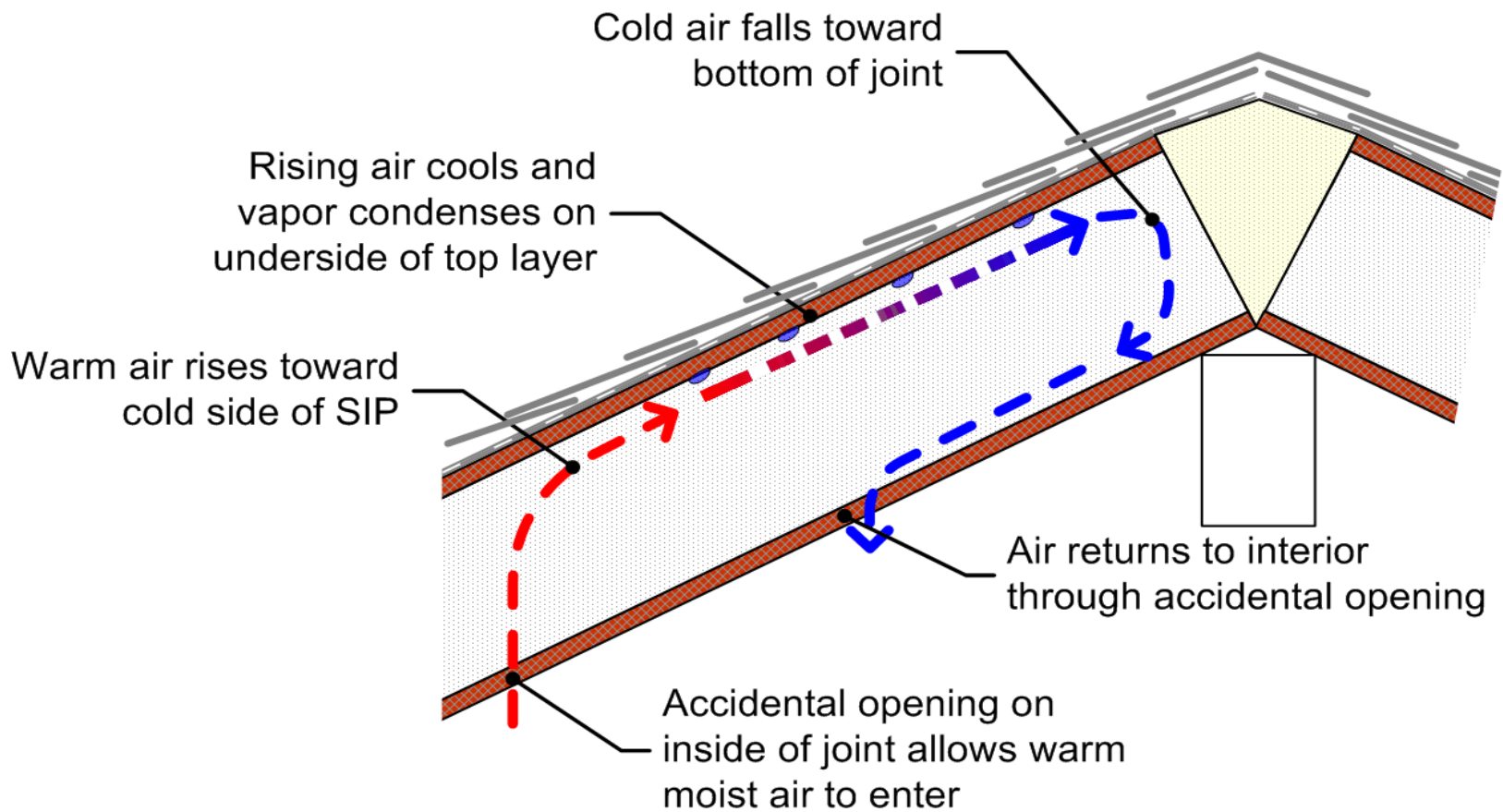












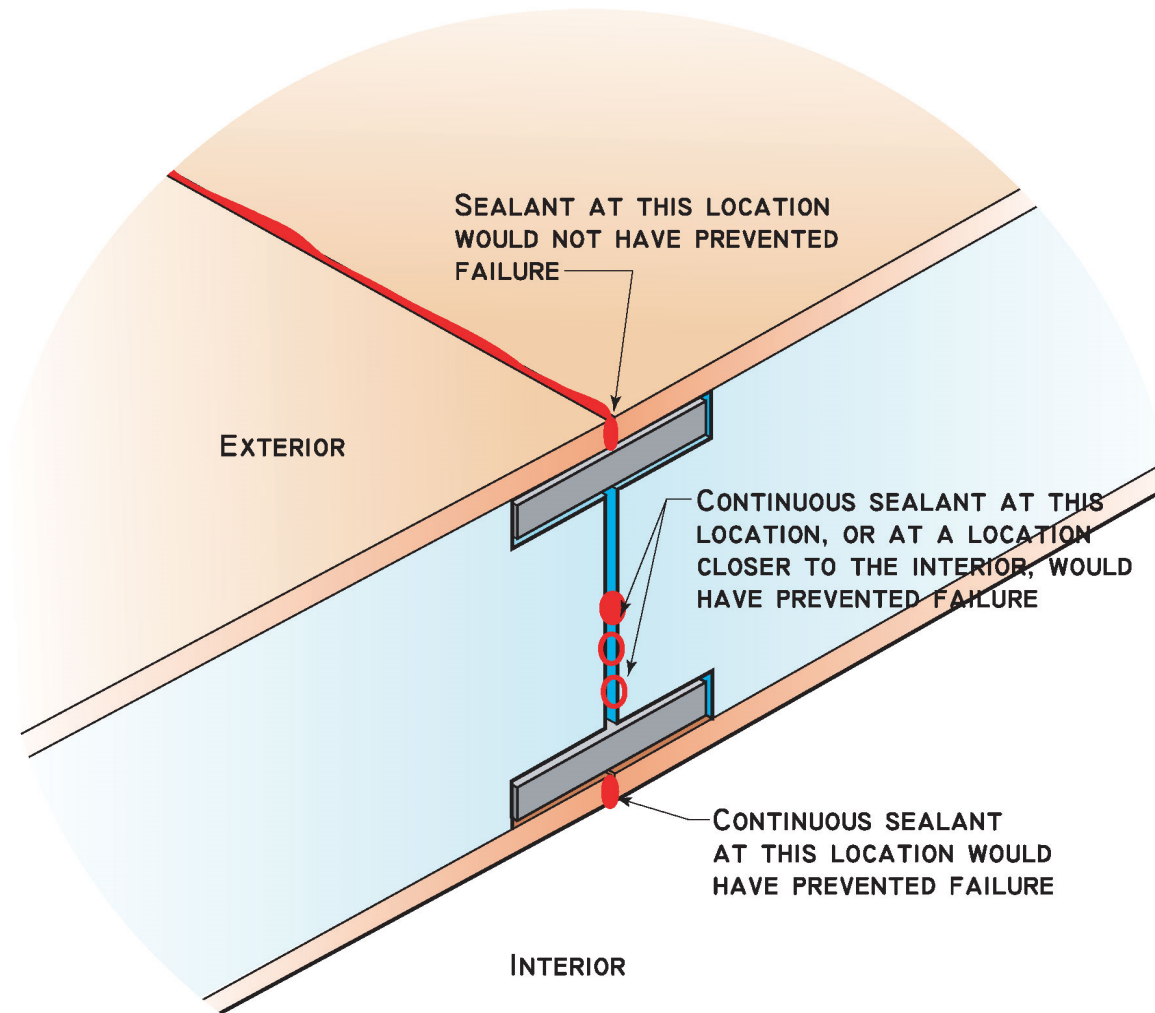


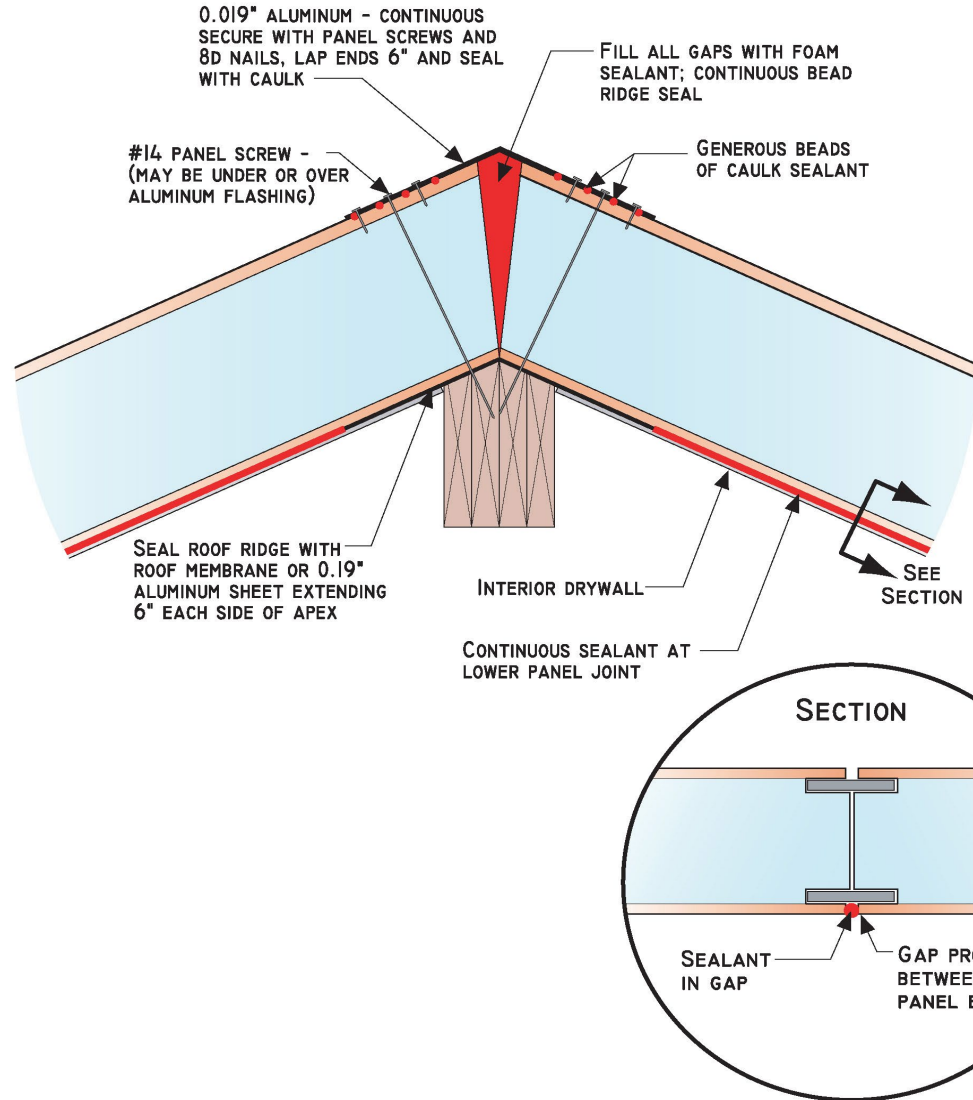


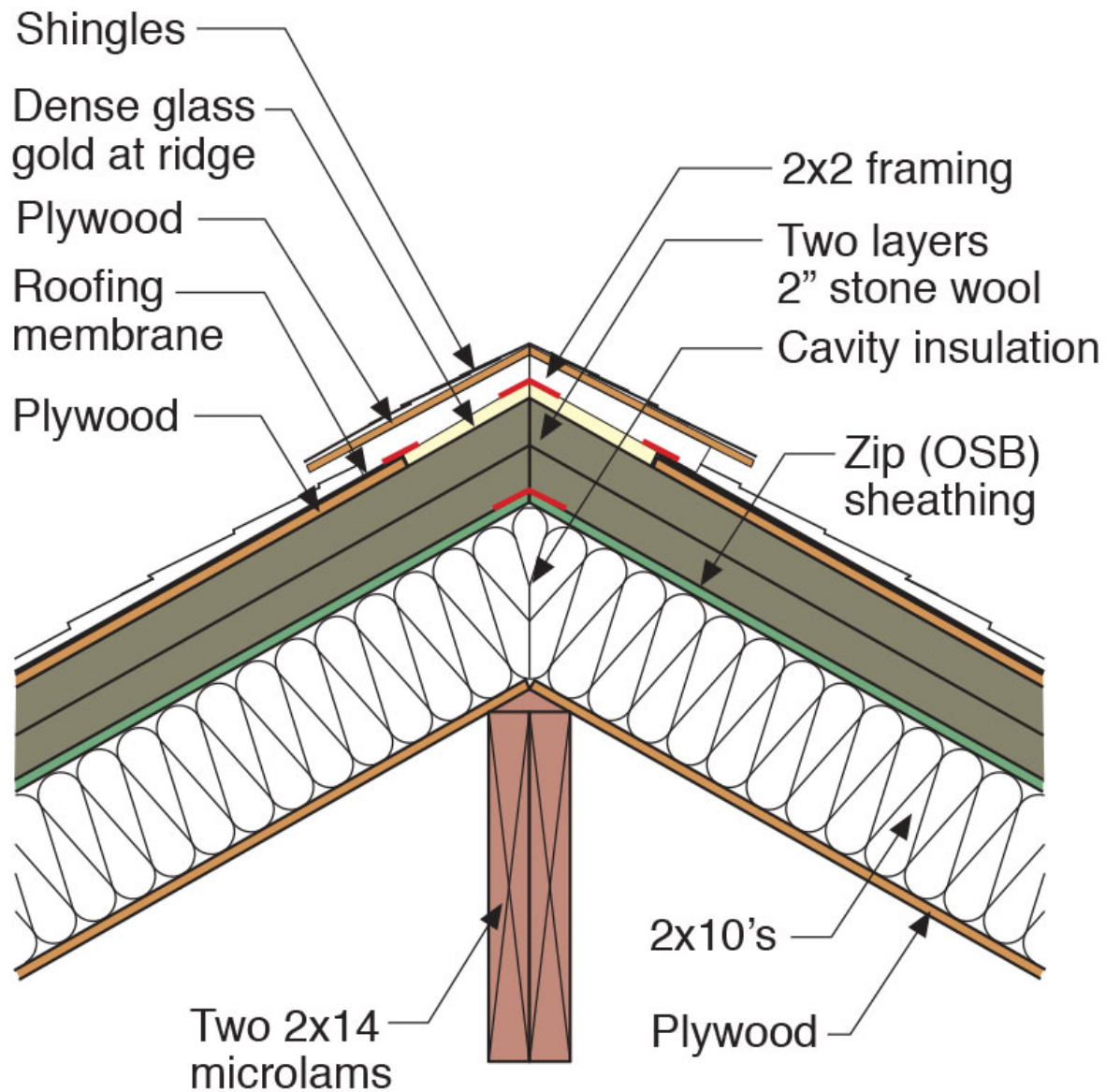


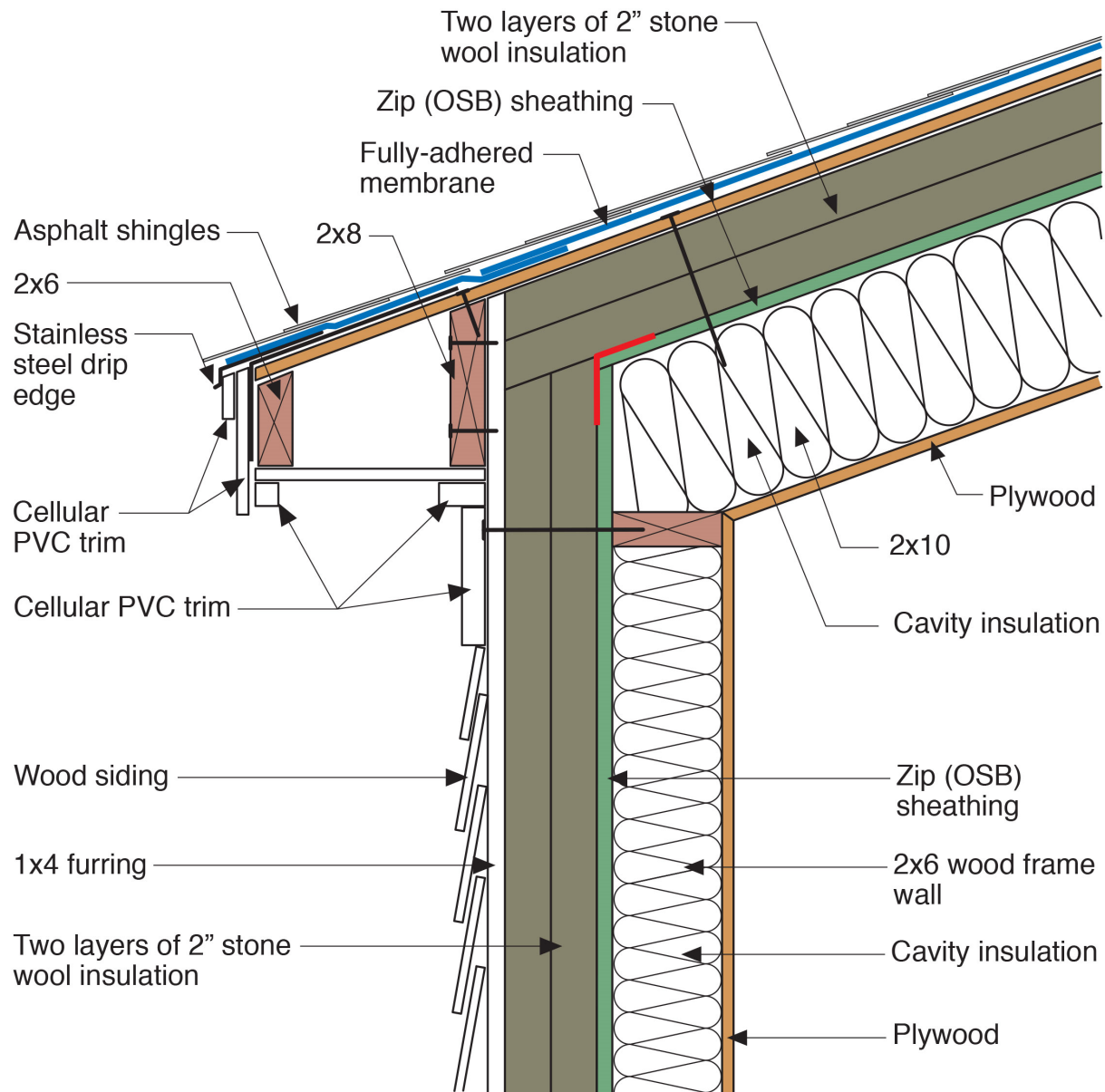






























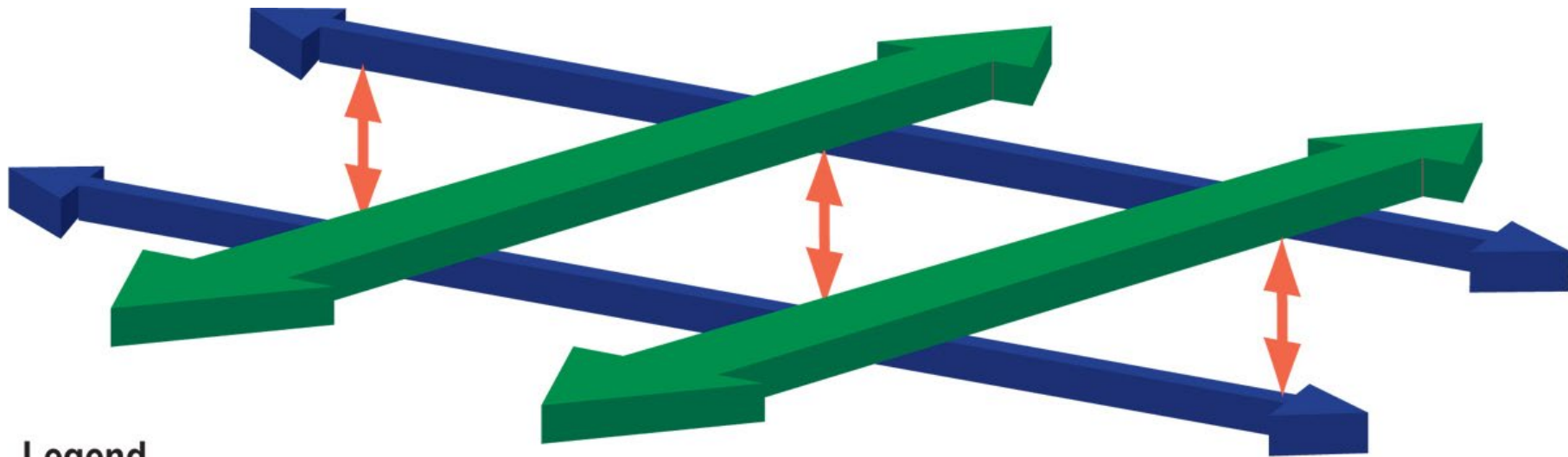









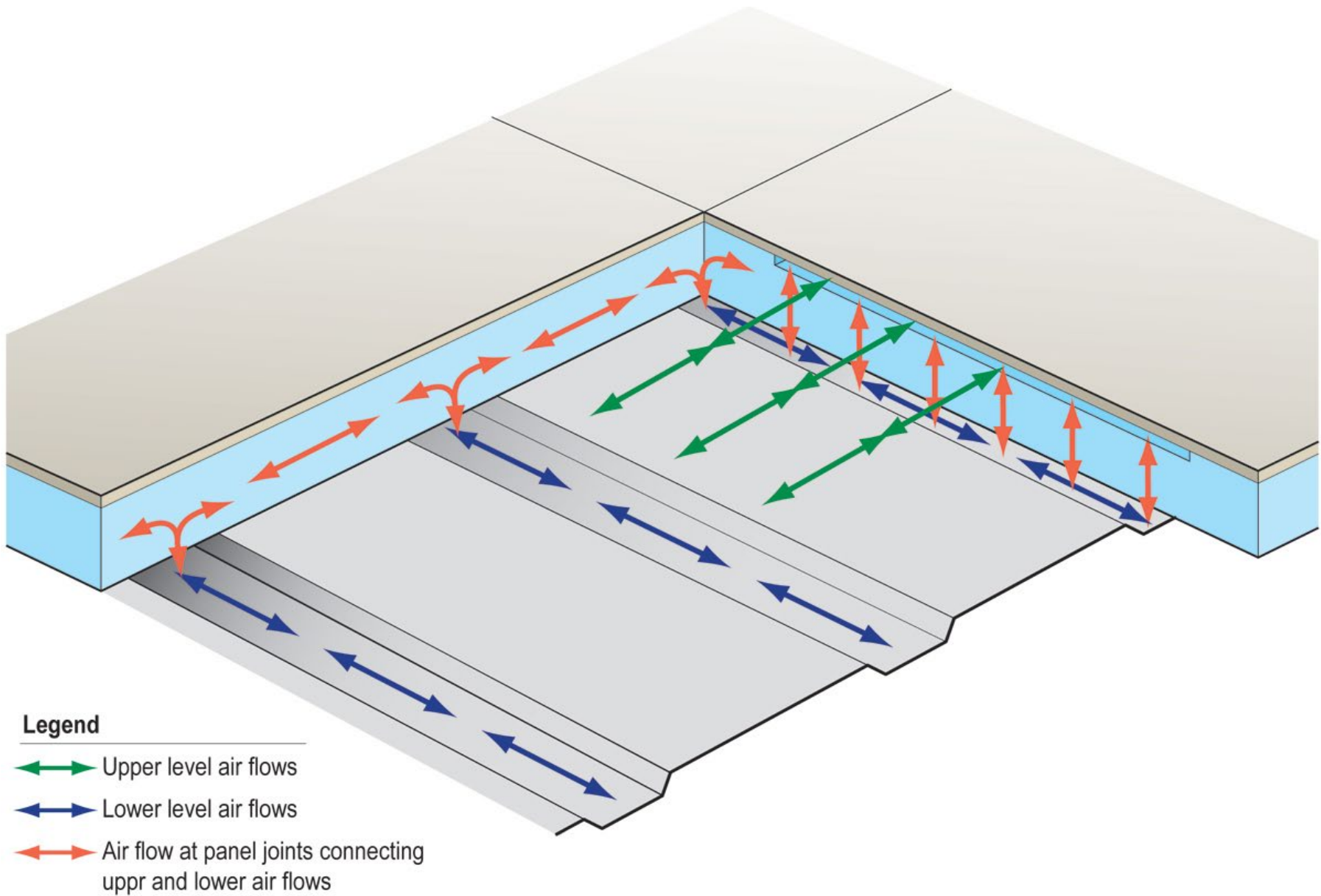


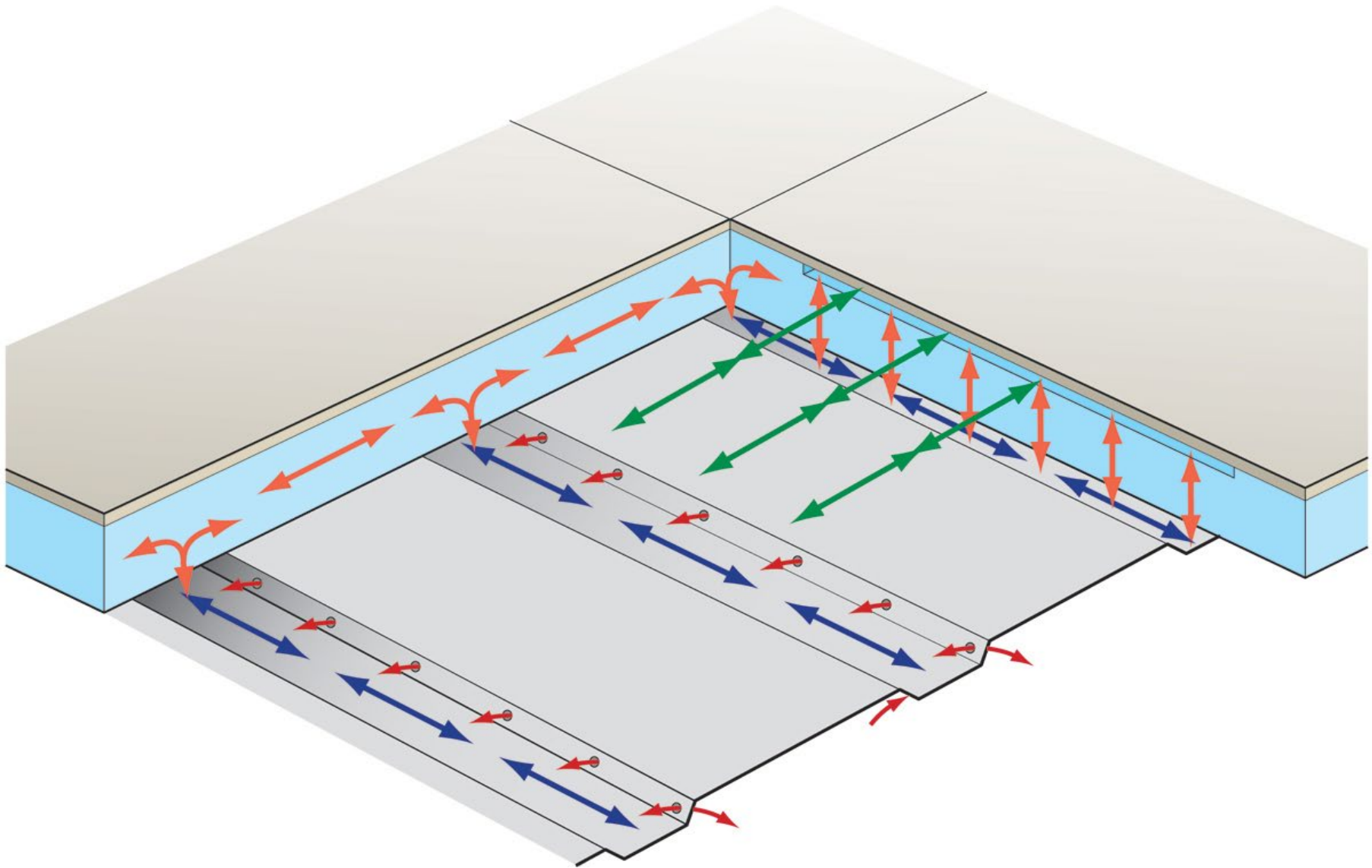




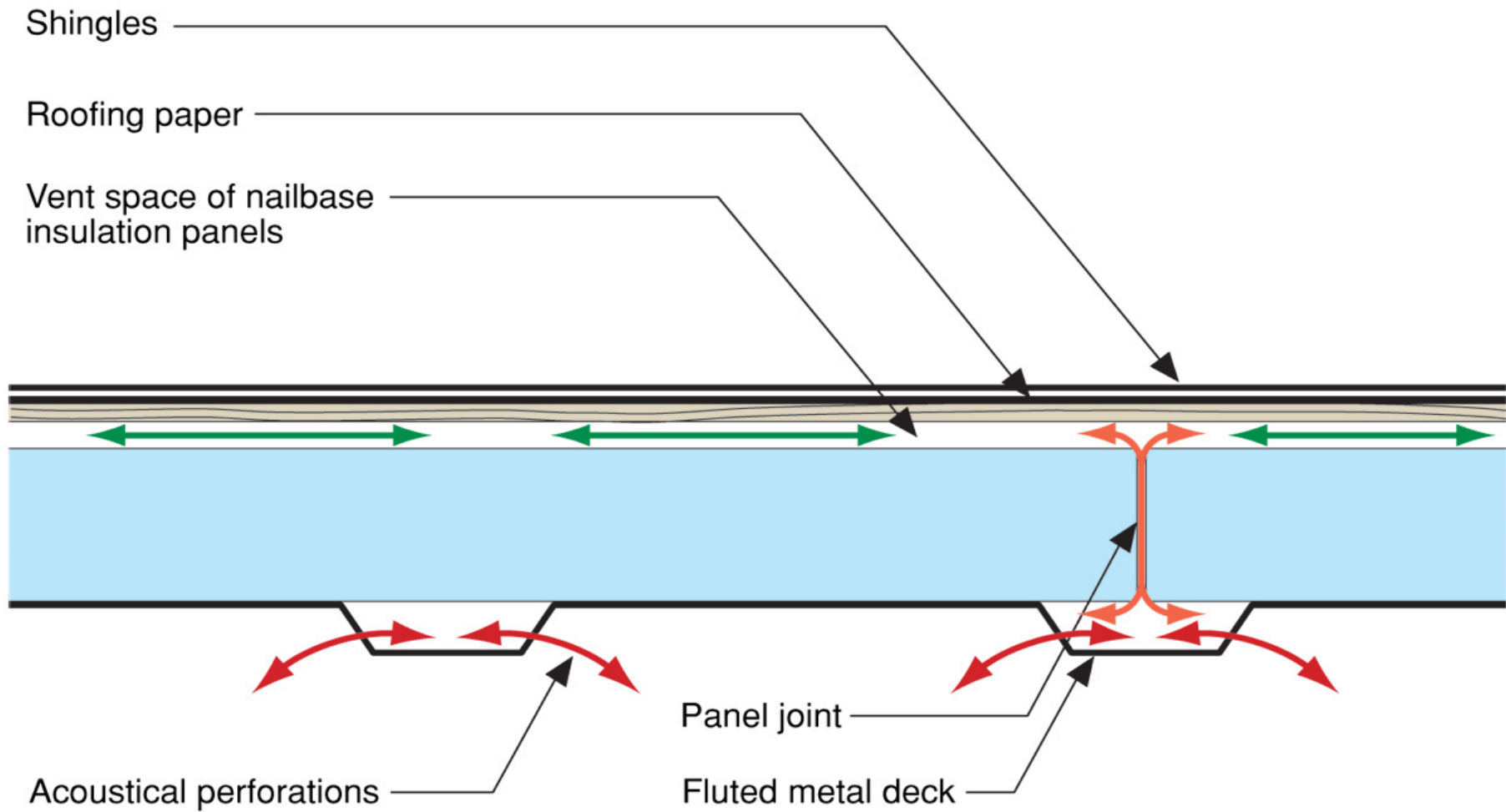
Legend

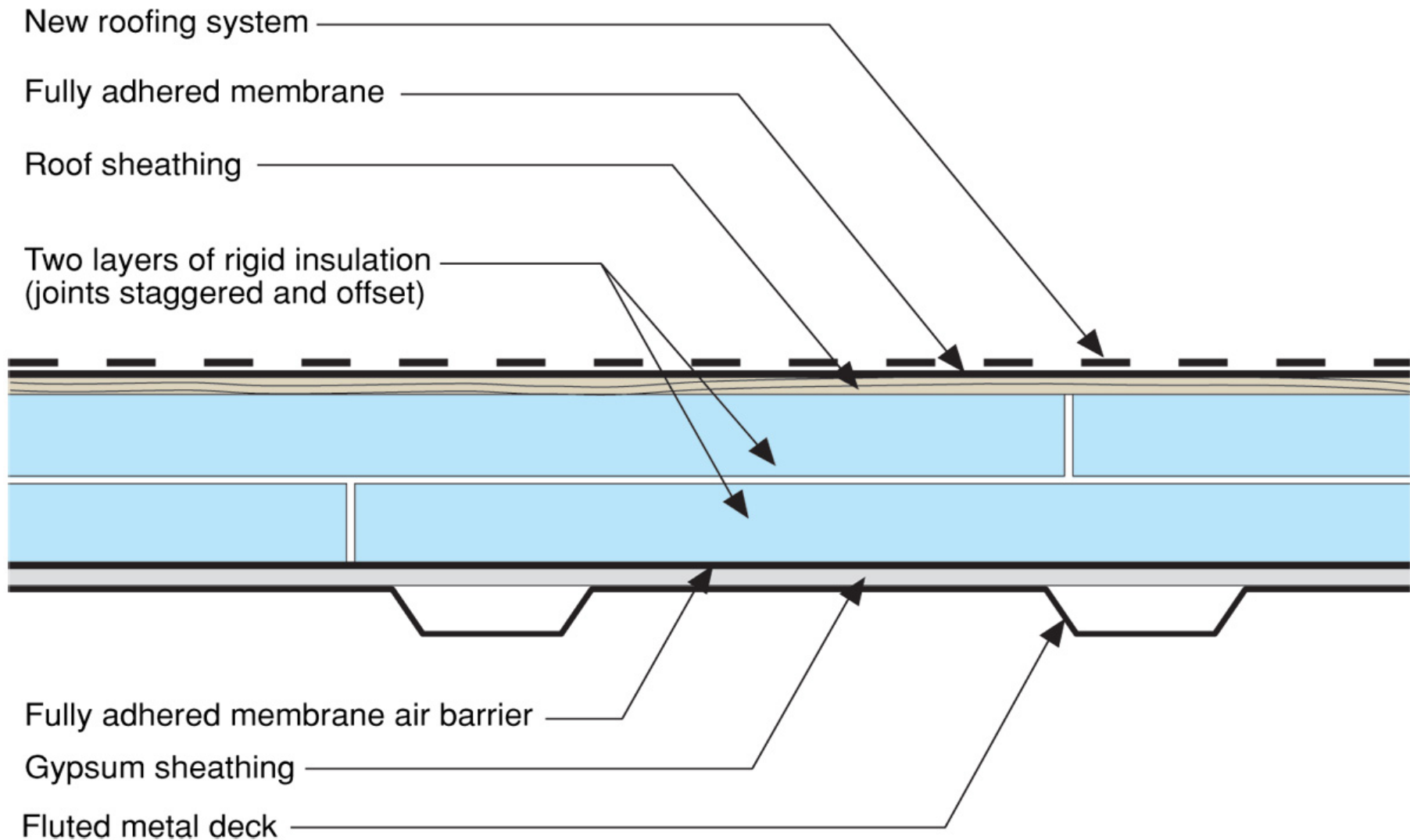
-  Upper level air flows
-  Lower level air flows
-  Air flow at panel joints

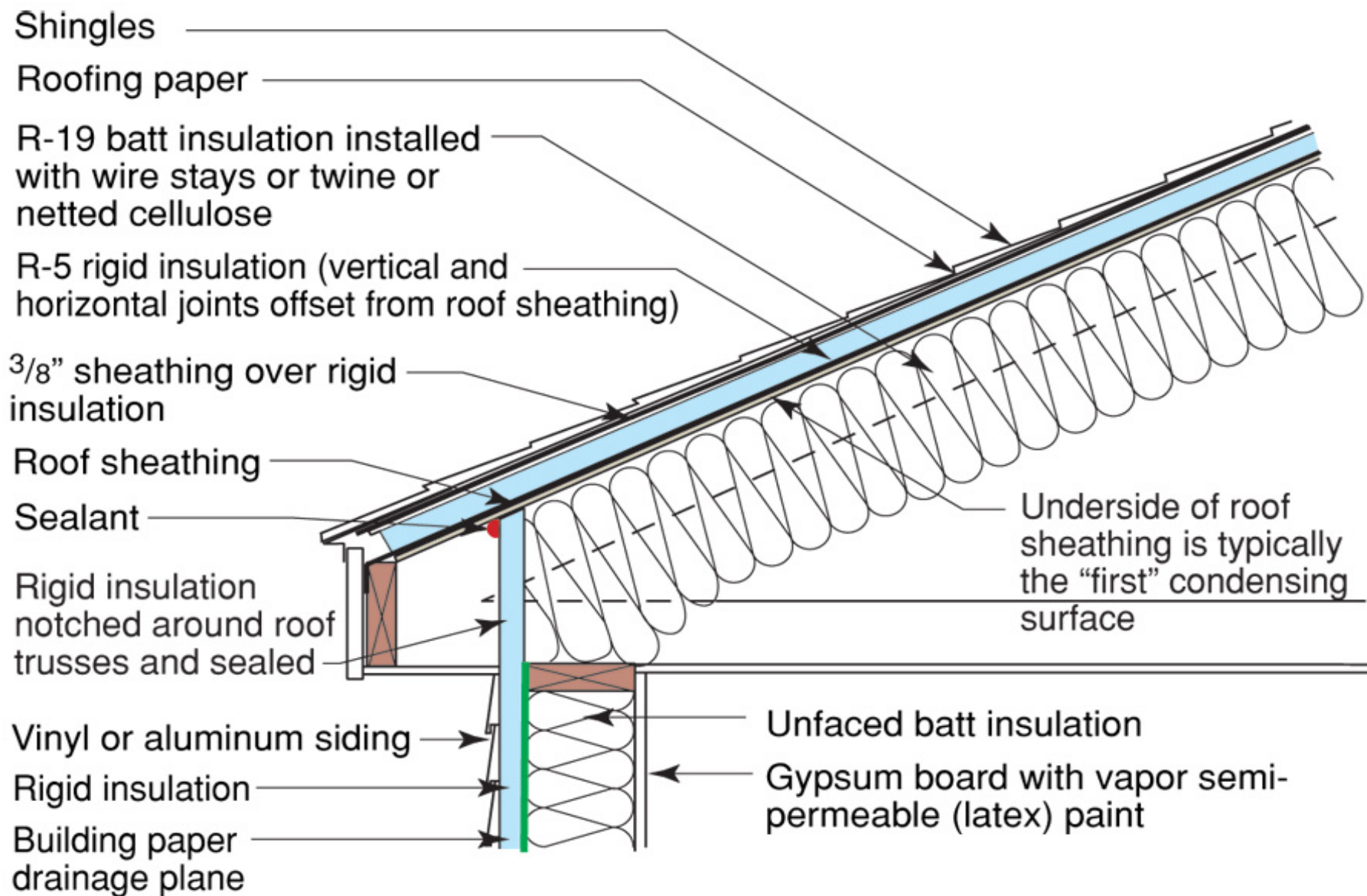


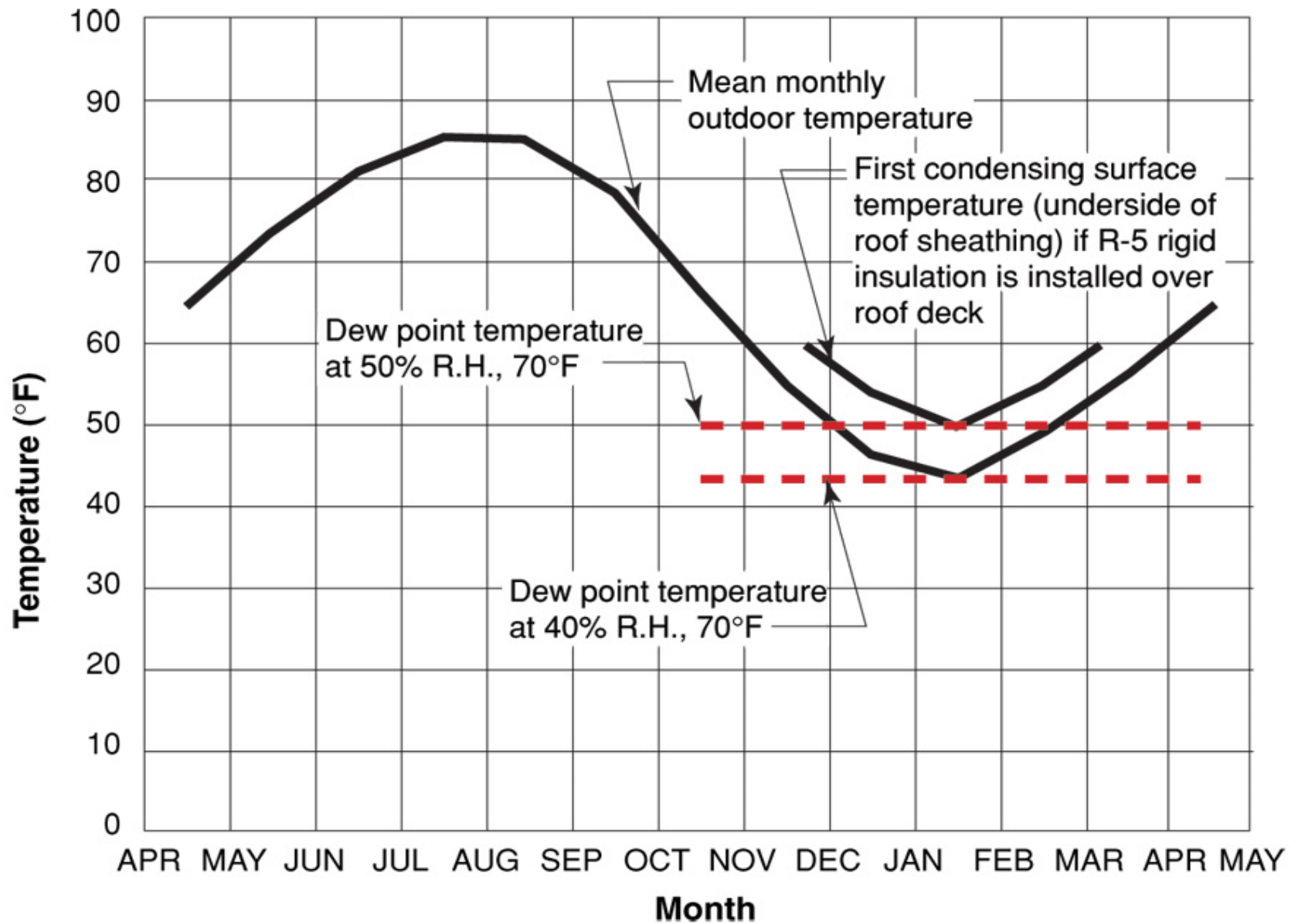


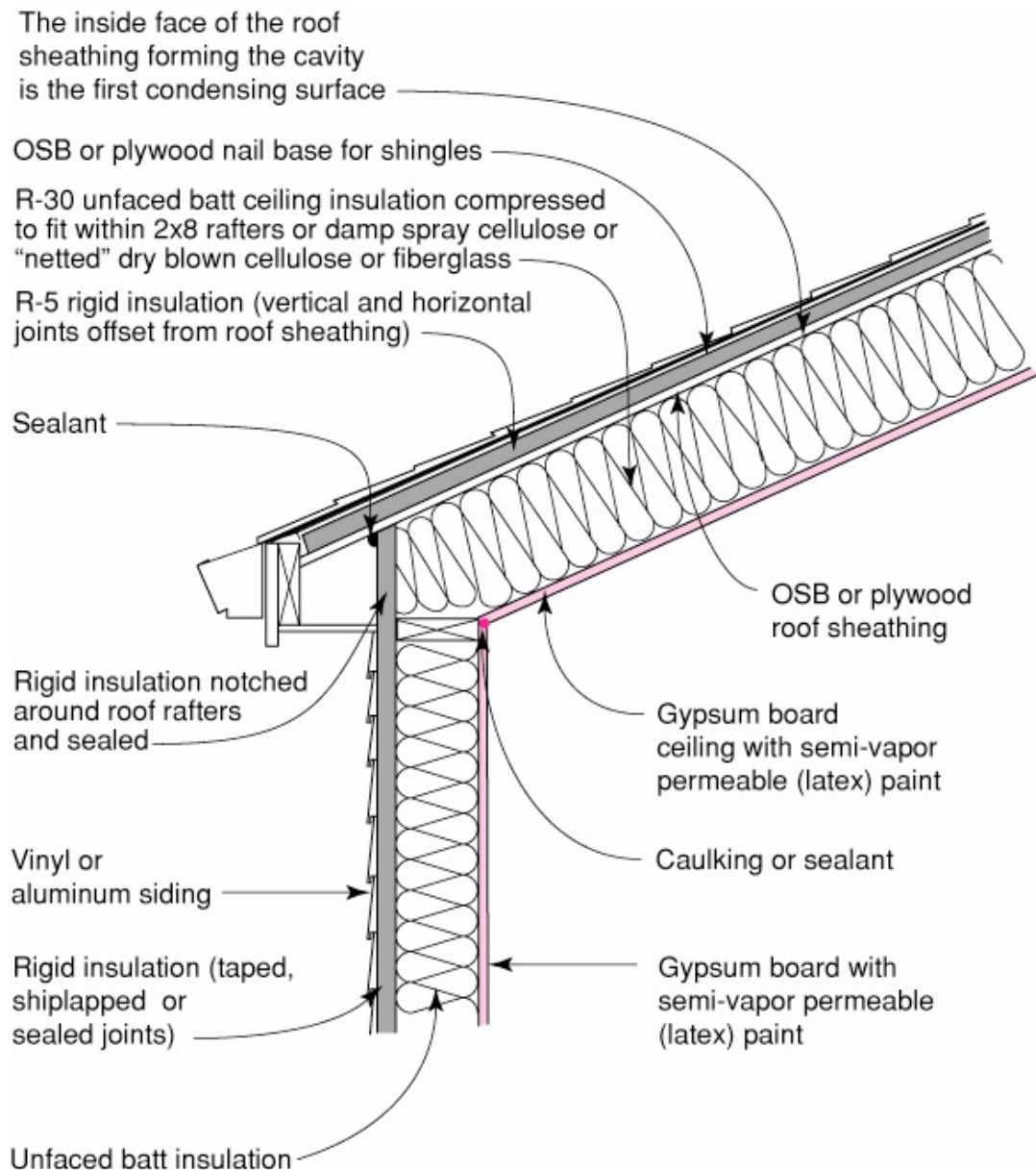


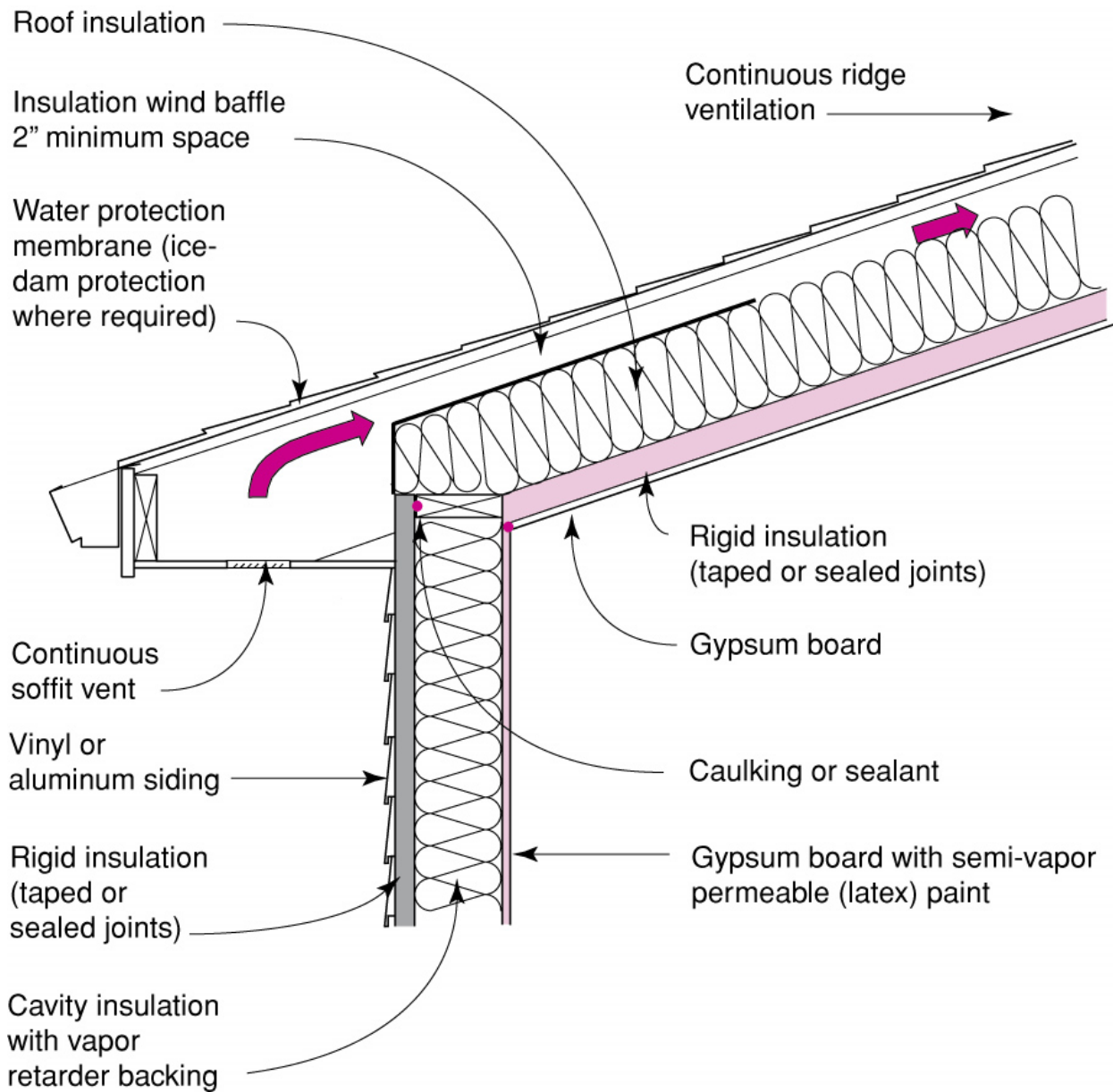


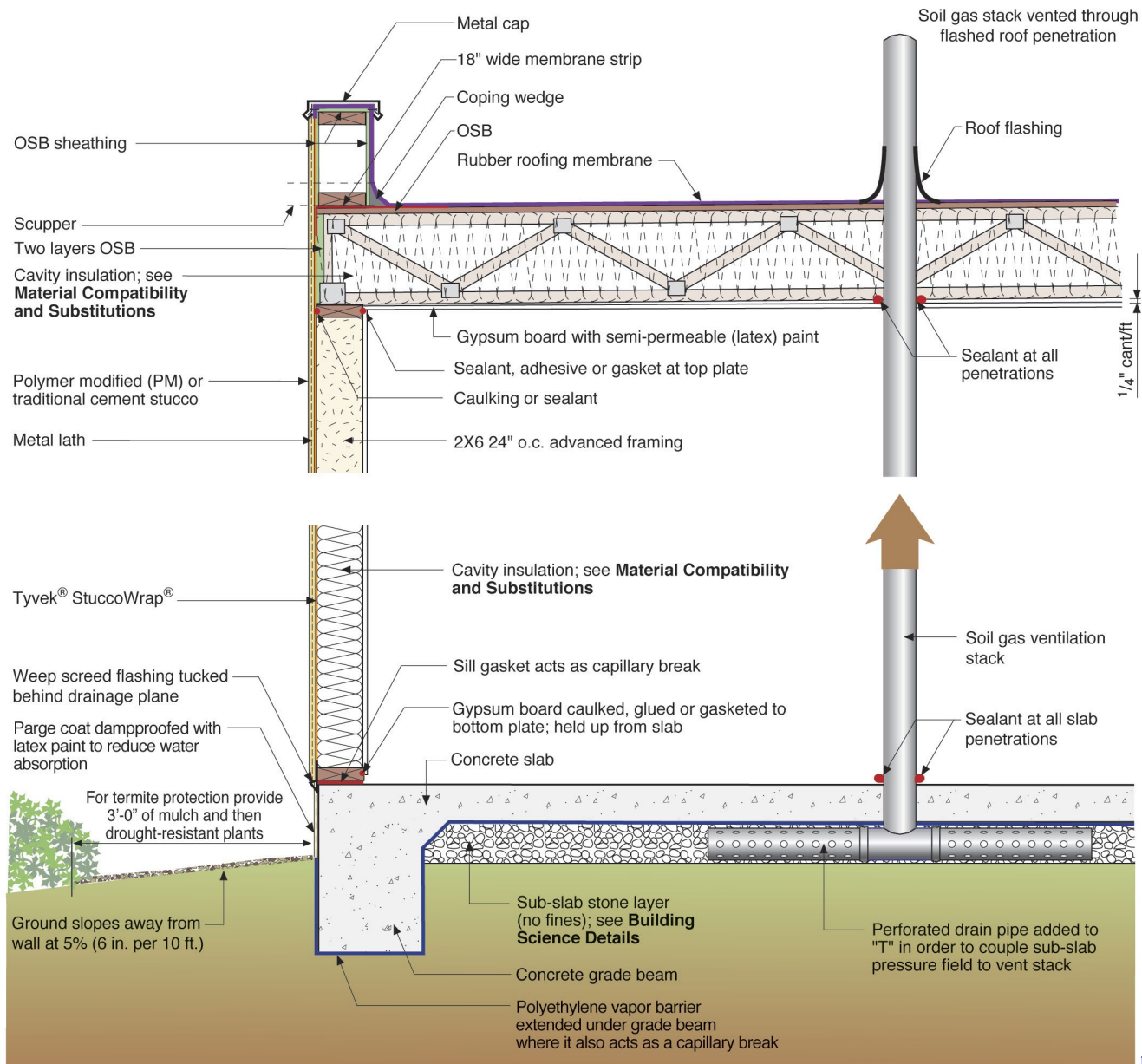


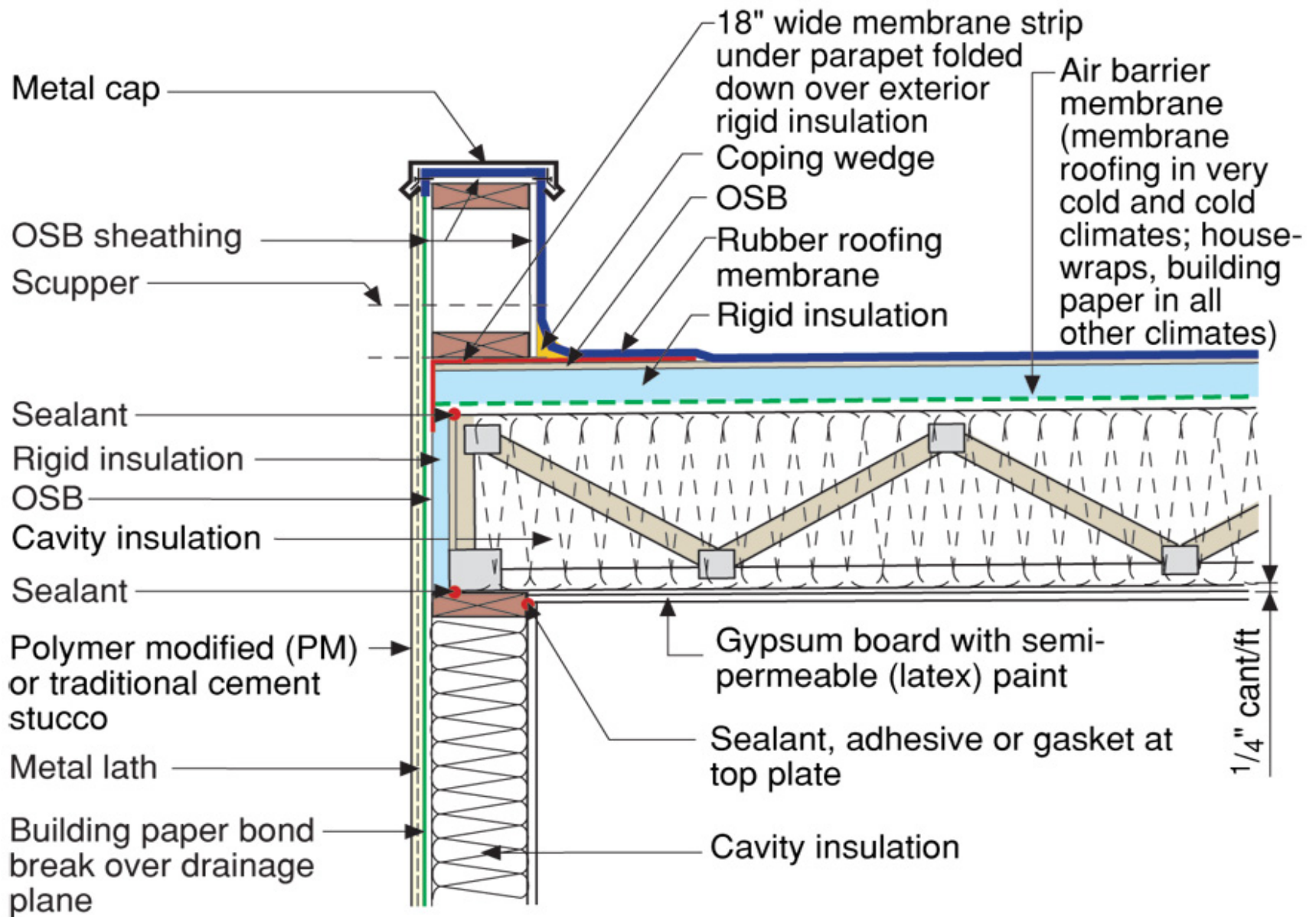


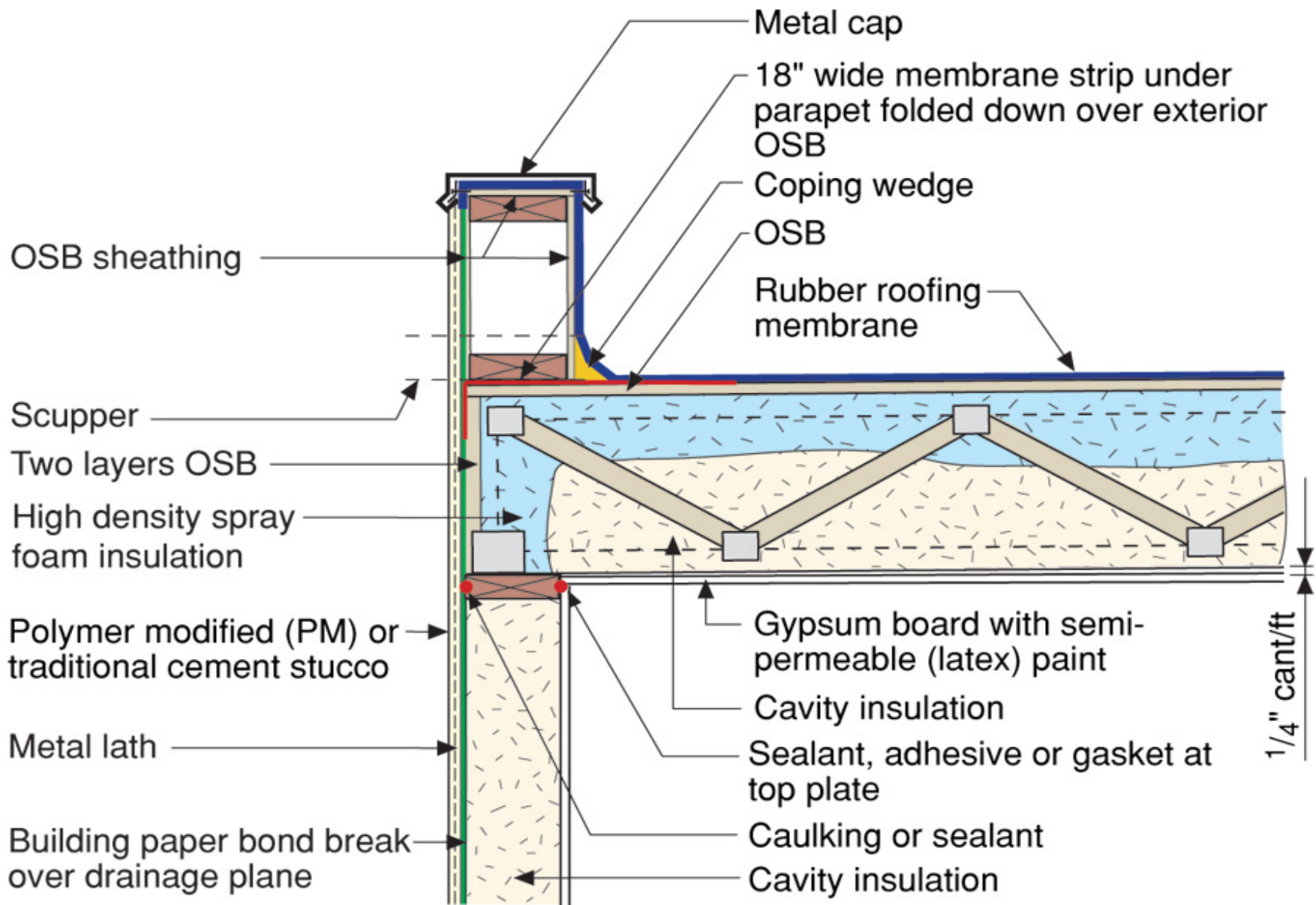


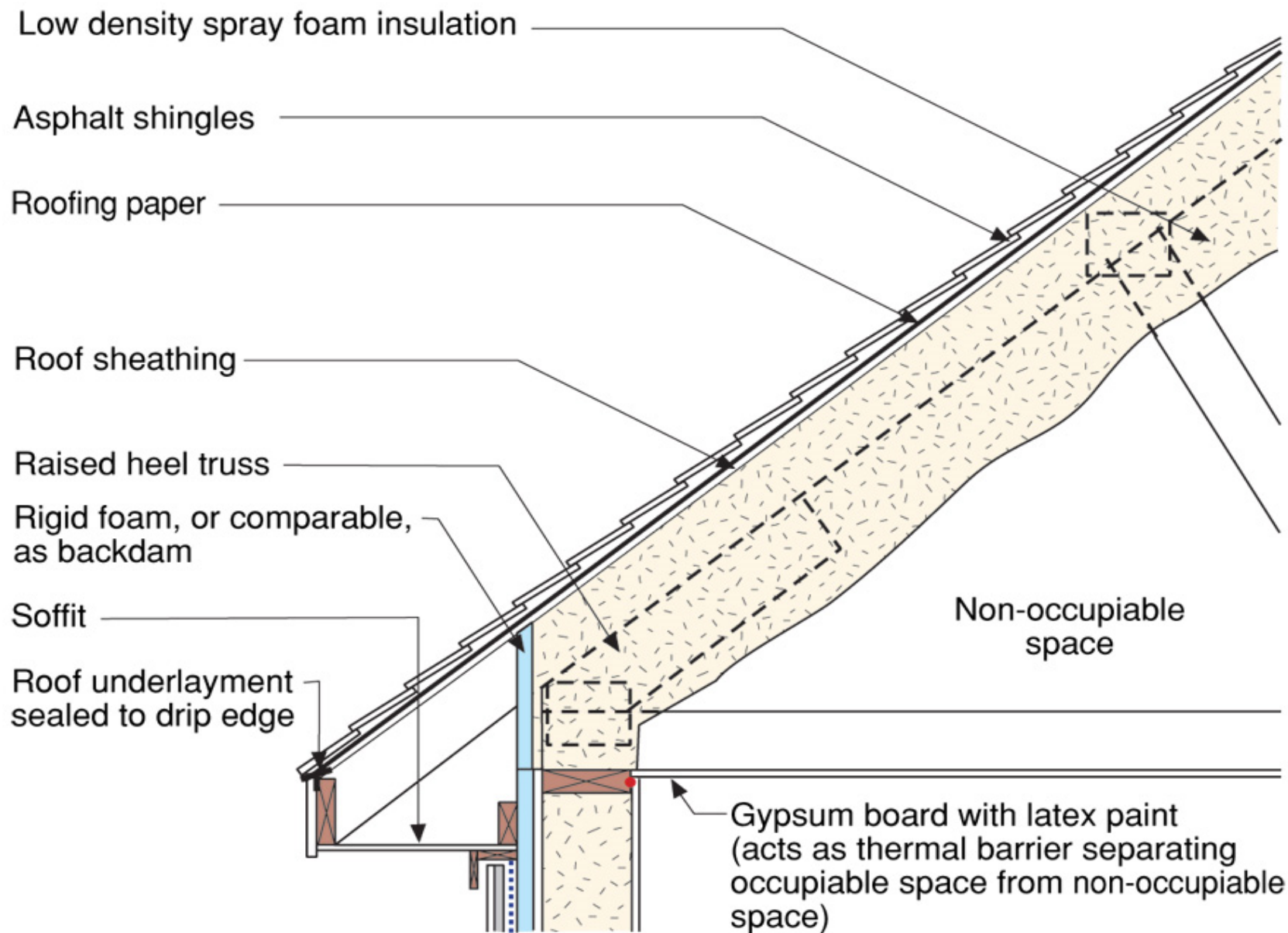




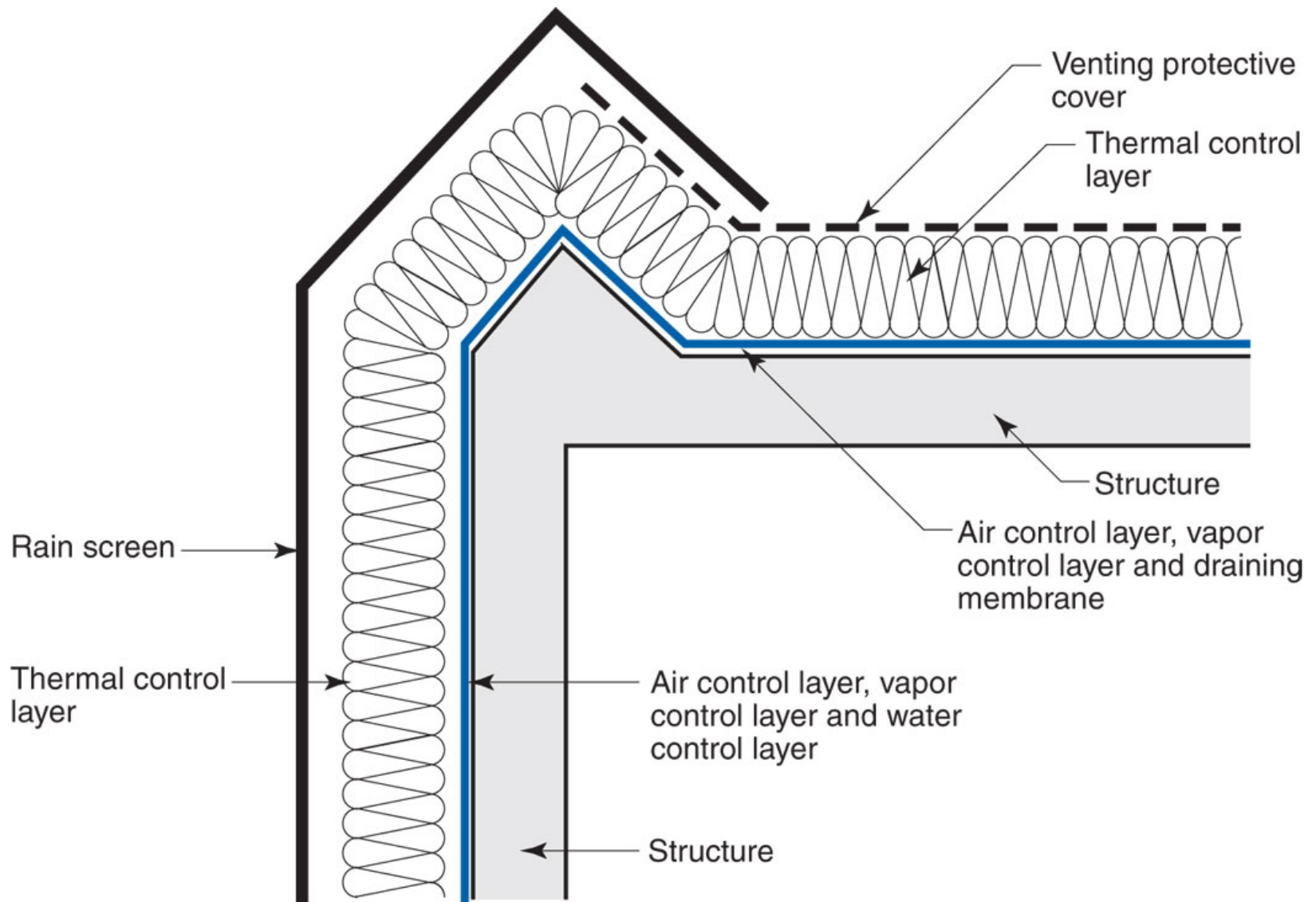












*Adapted from Baker, M.; Roofs, 1980;
Courtesy National Research Council of Canada*

