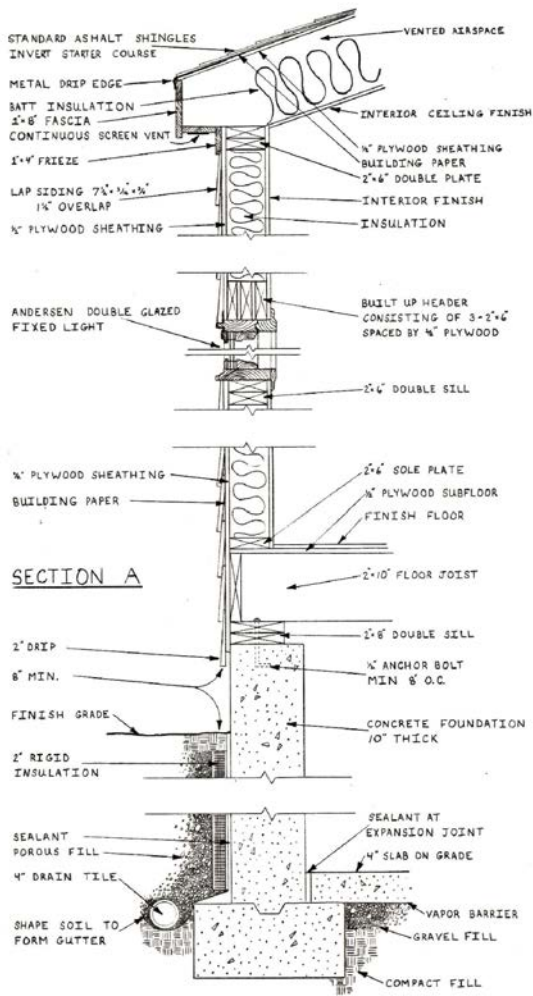


The **GRAPHIC LANGUAGE**
of DRAWINGS

STEVEN BACZEK ARCHITECT



WENTWORTH
INSTITUTE OF
TECHNOLOGY

CONTRACT DRAWING I

PROF JOHN ELLIS

ARCHITECTS
MITCHELL/GIURGOLA

DRAWN BY:
STEVEN BACZEK

22 APRIL 1990

KASPERSON RESIDENCE
CONESTOGA PA.



SECTION A
SOUTHEAST WALL
&
FLOOR PLANS

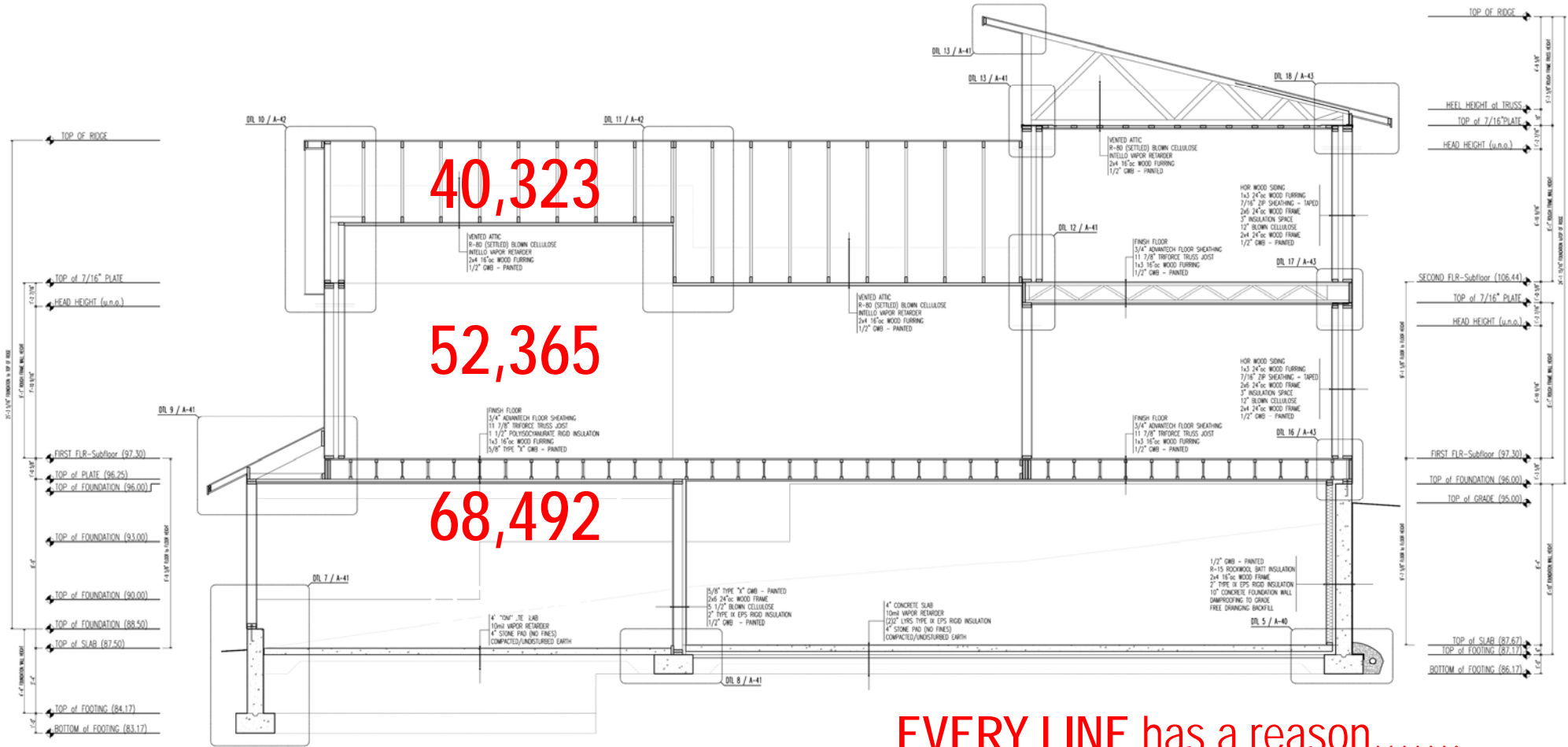
SHEET
1 OF 3



Been Drawing for
OVER 44 Years..

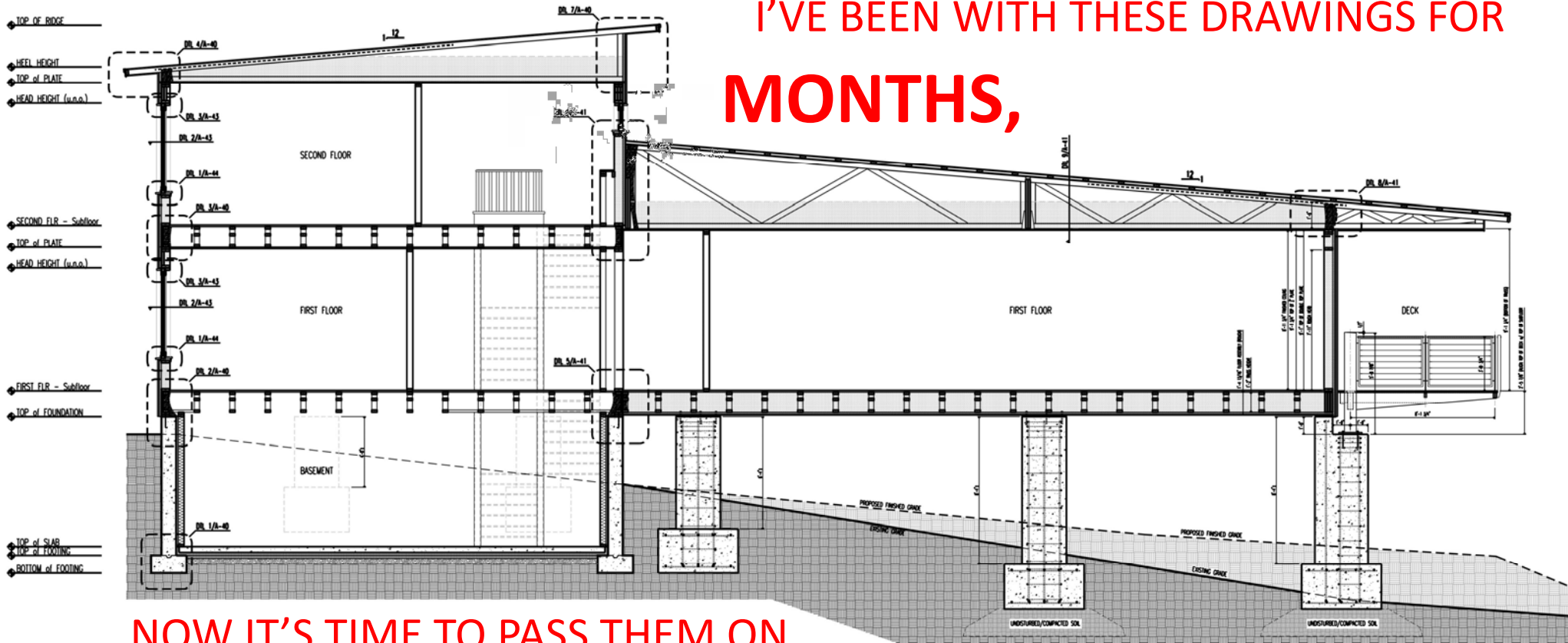
High School Drafting Teacher





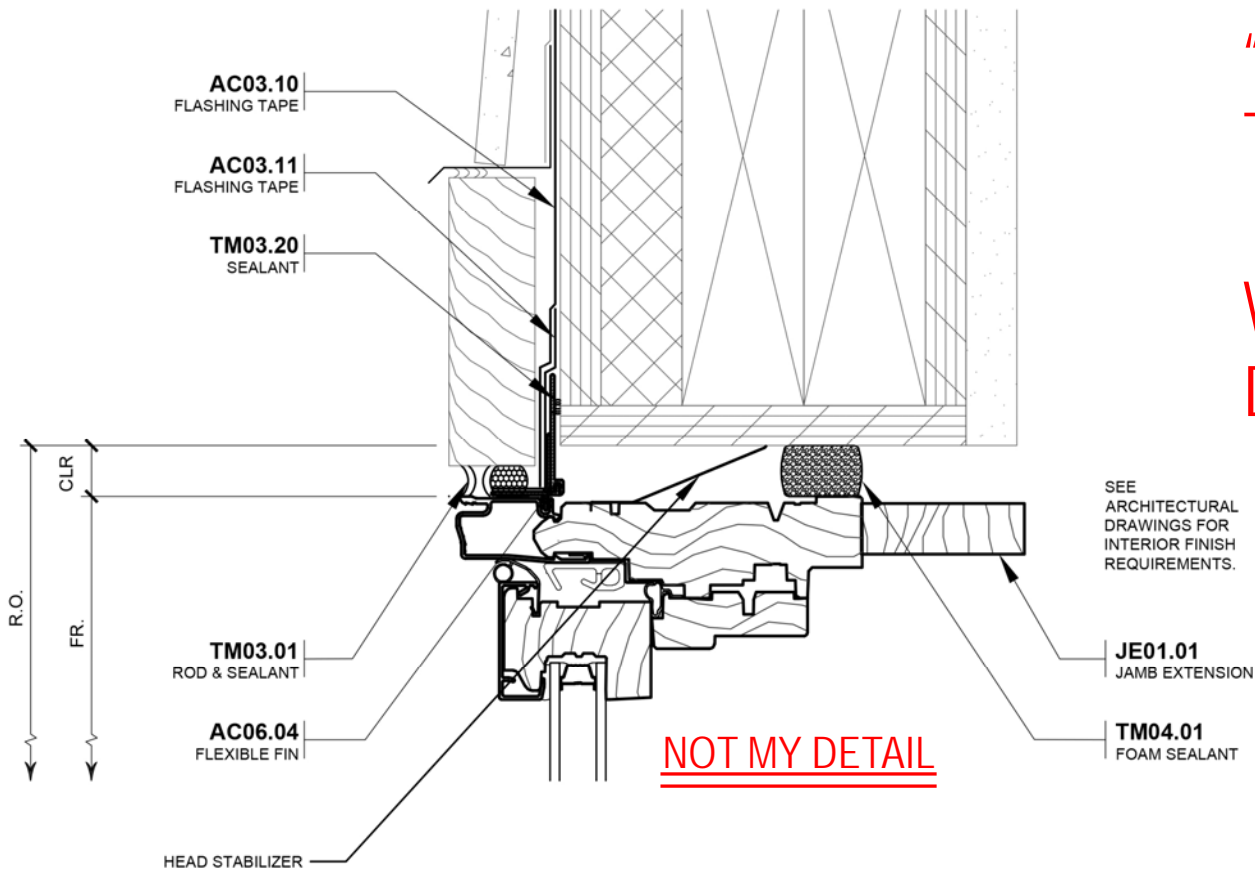
EVERY LINE has a reason.....

“ I’VE BEEN WITH THESE DRAWINGS FOR MONTHS,



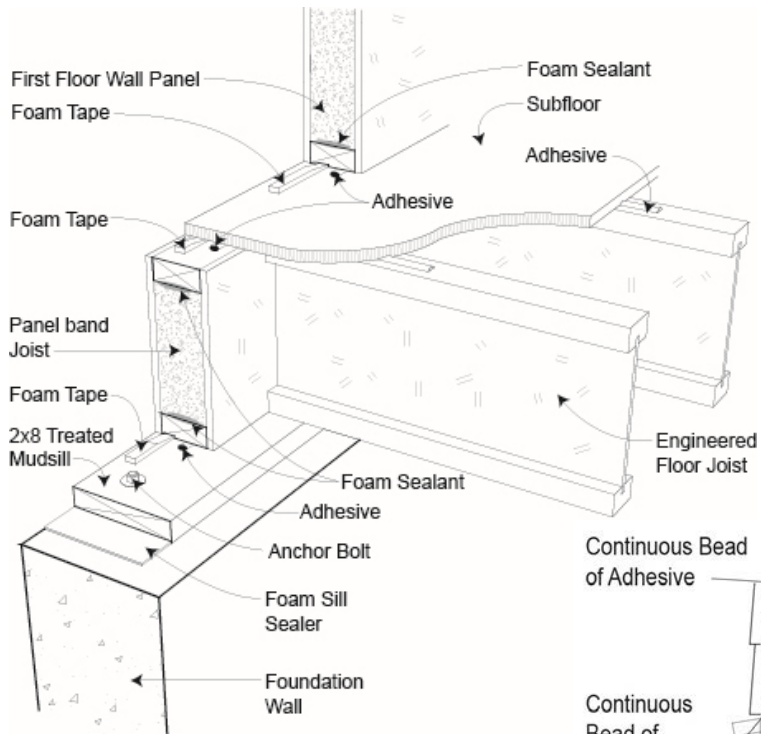
NOW IT’S TIME TO PASS THEM ON

TO PEOPLE THAT WILL SEE THEM FOR THE**FIRST TIME** “

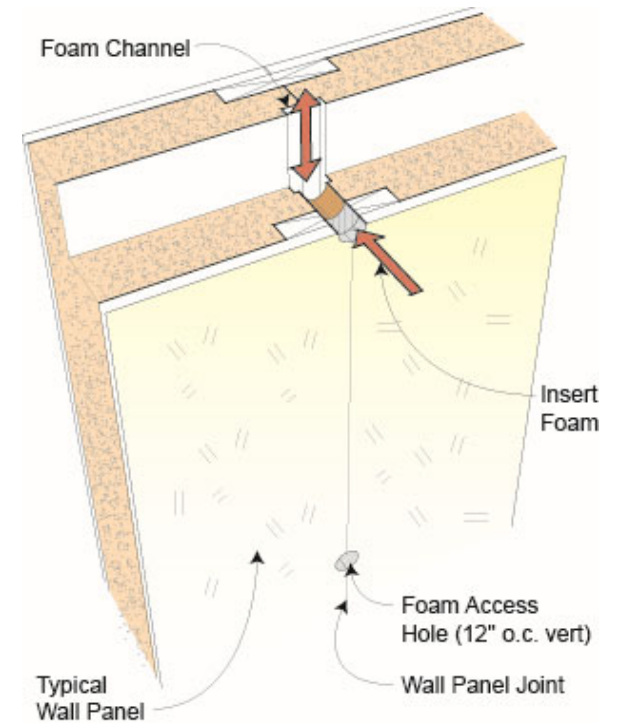


" KNOWLEDGE = What To Draw.....

WISDOM = WHY to Draw It

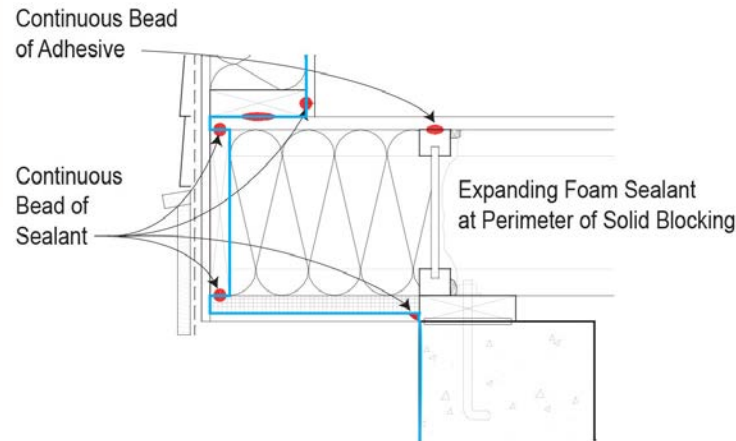


ALTERNATIVES....

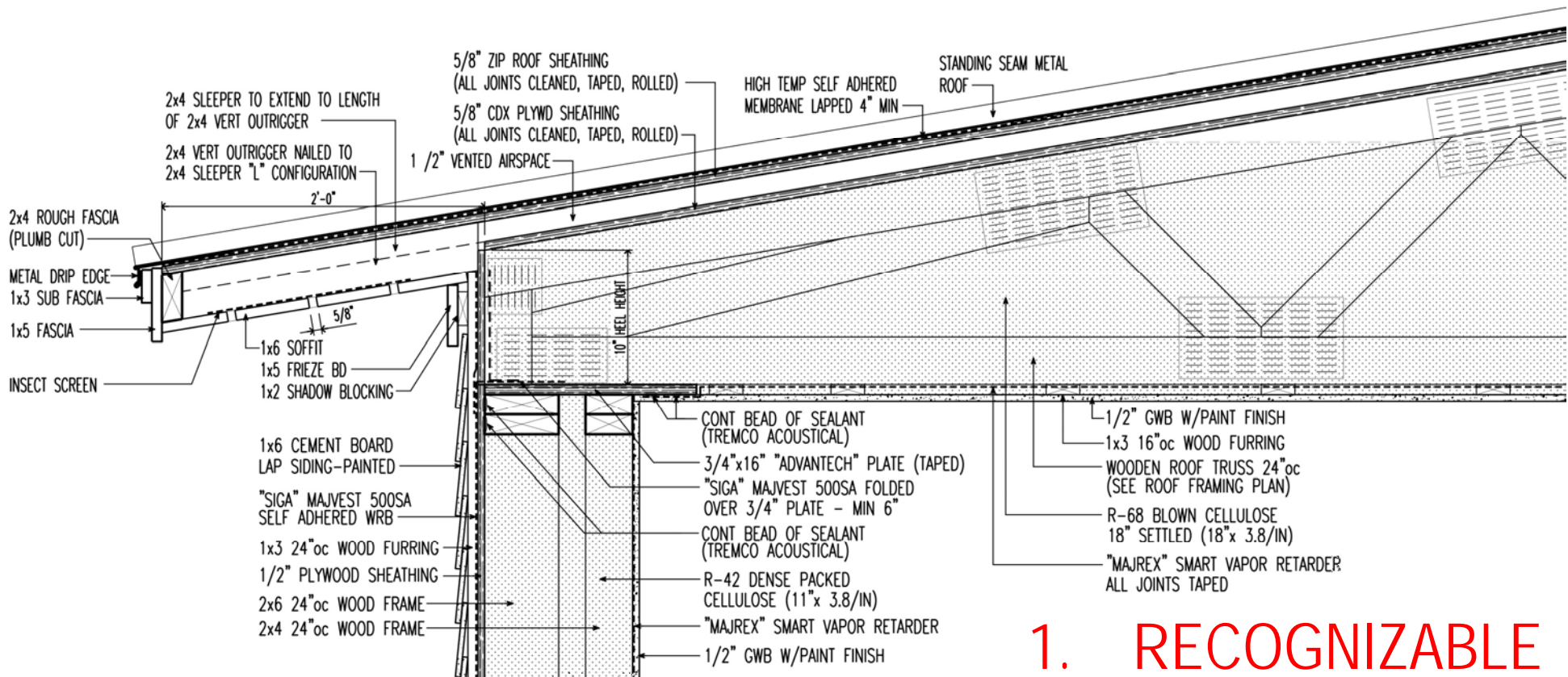


3D Drawings....

In COLOR....

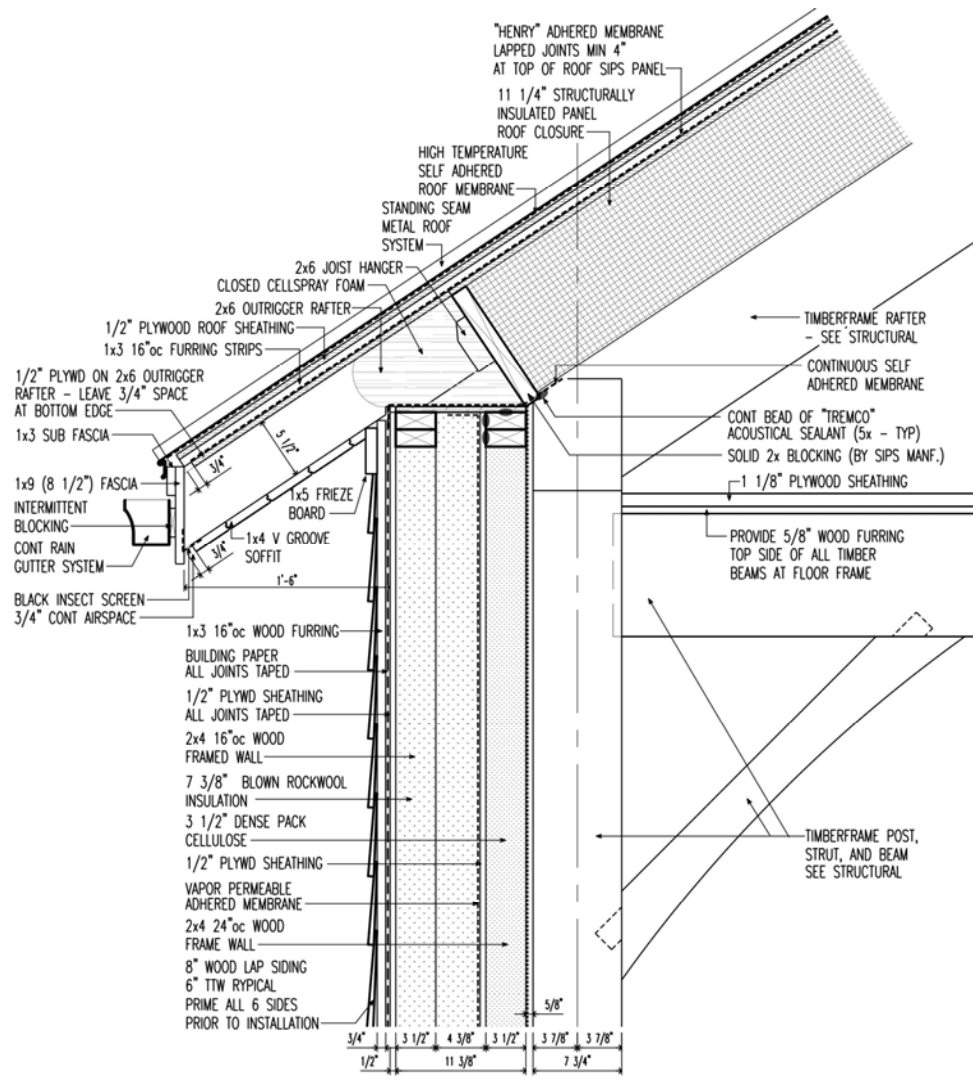


FOCUSED Info

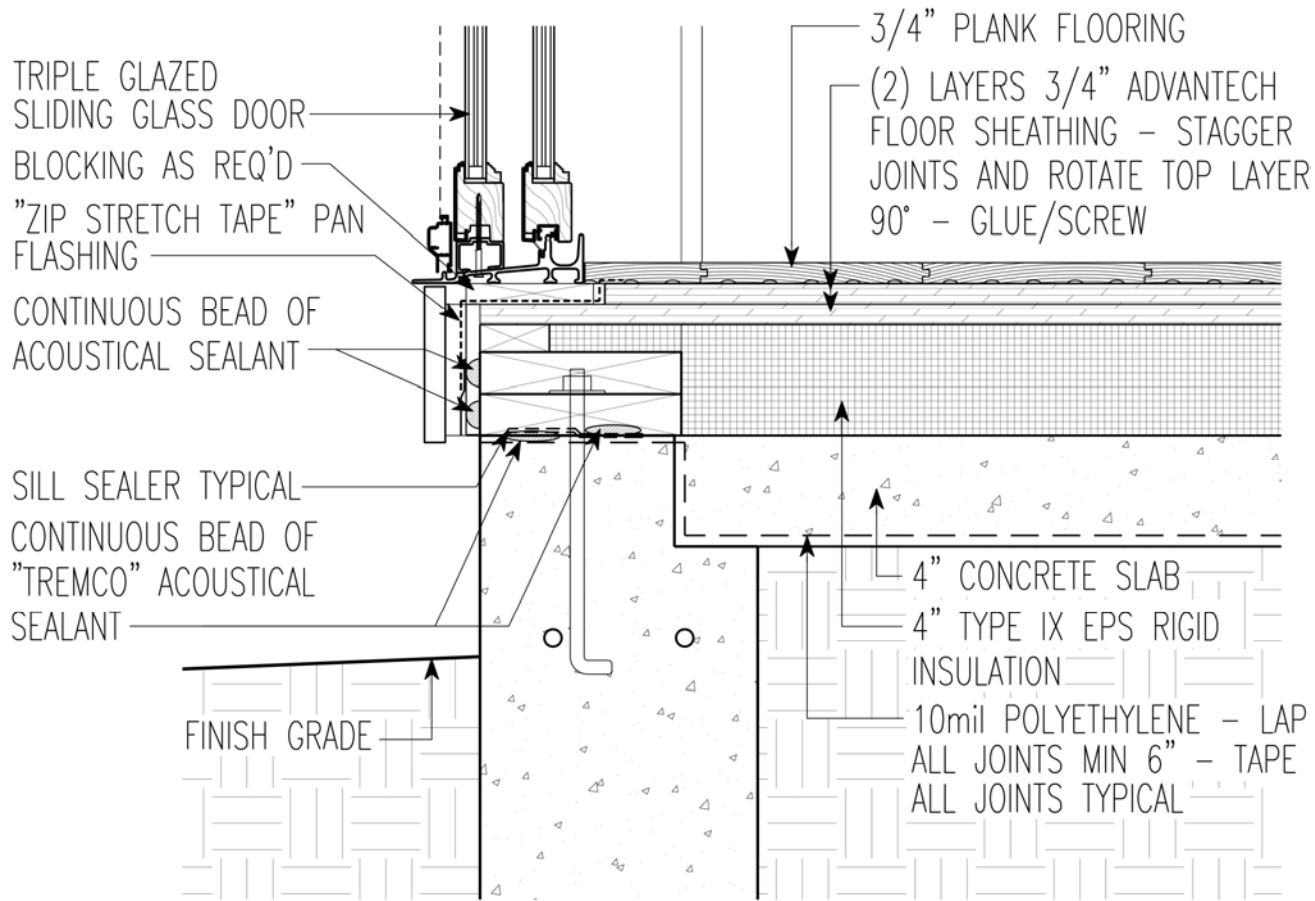


"DETAIL" REQUIREMENTS =

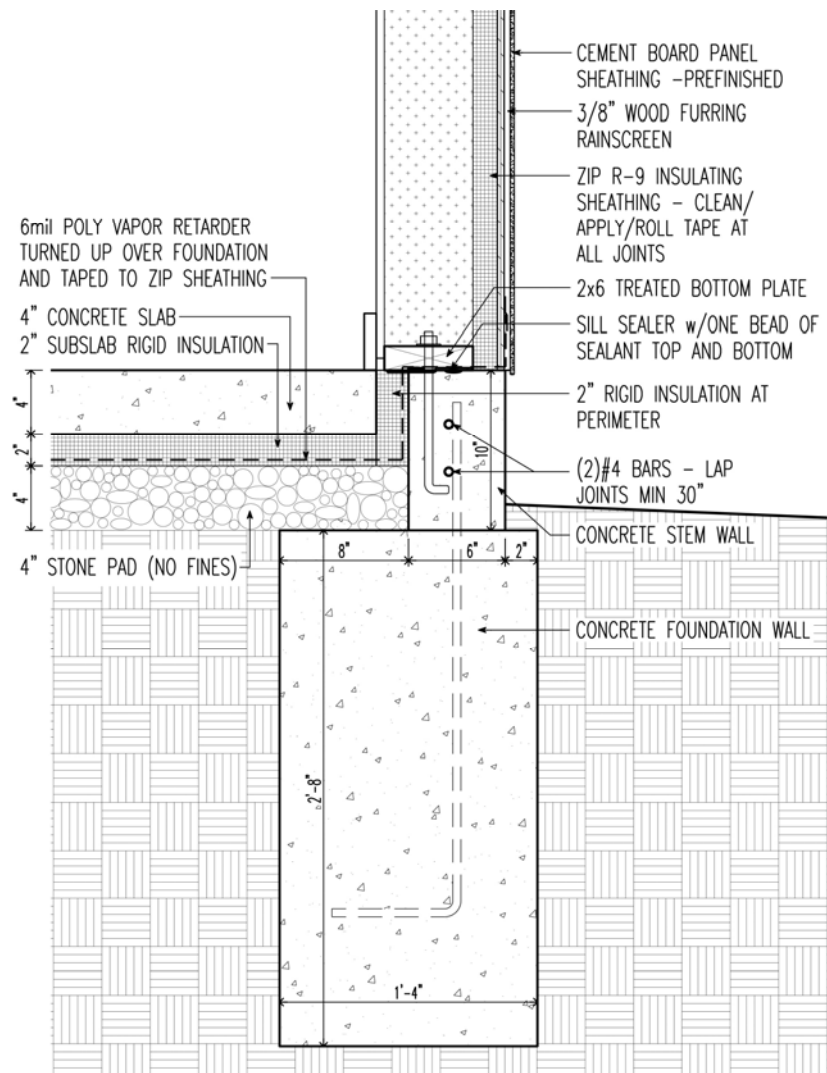
1. RECOGNIZABLE
2. FUNCTIONAL
3. EXECUTABLE



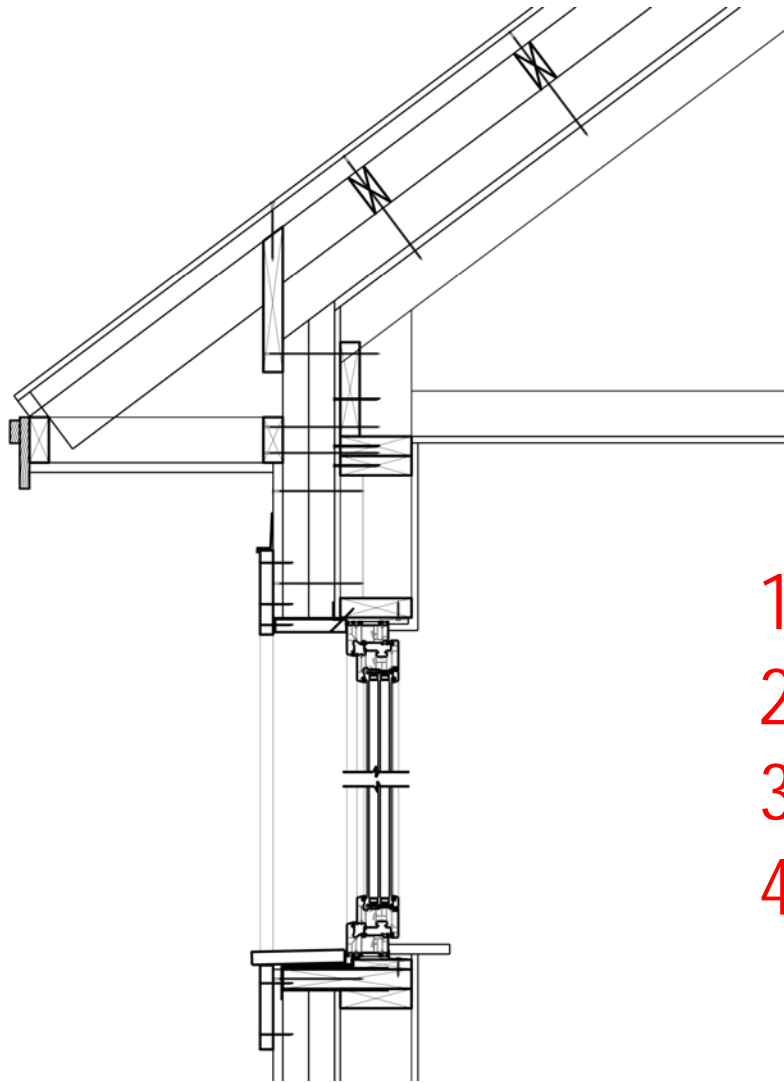
1. RECOGNIZABLE
2. FUNCTIONAL
3. EXECUTABLE



1. RECOGNIAZABLE
2. FUNCTIONAL
3. EXECUTABLE

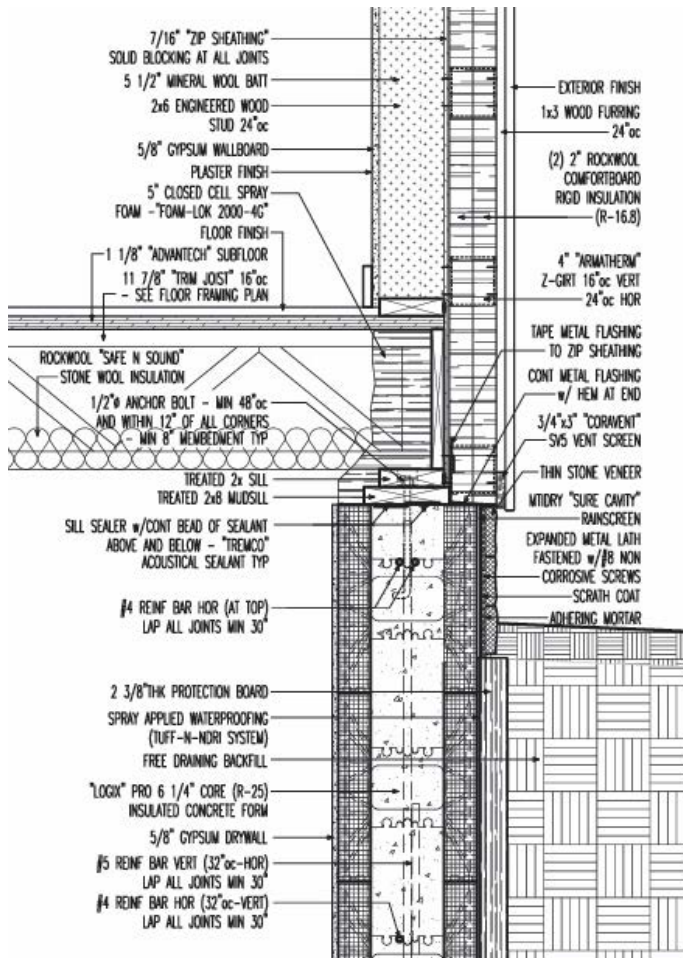


1. RECOGNIZABLE
2. FUNCTIONAL
3. EXECUTABLE

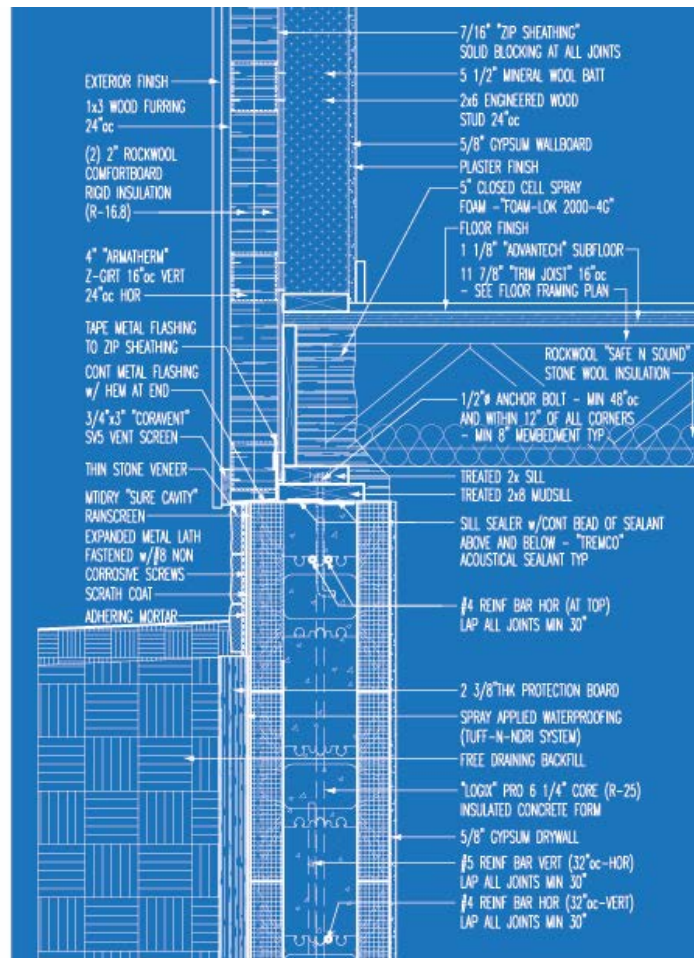


ANATOMY OF A DETAIL

1. THINGS THAT HOLD IT UP
2. MAKE ATTACHMENTS
3. ADD PERFORMANCE
4. ADD TEXT / NOTES

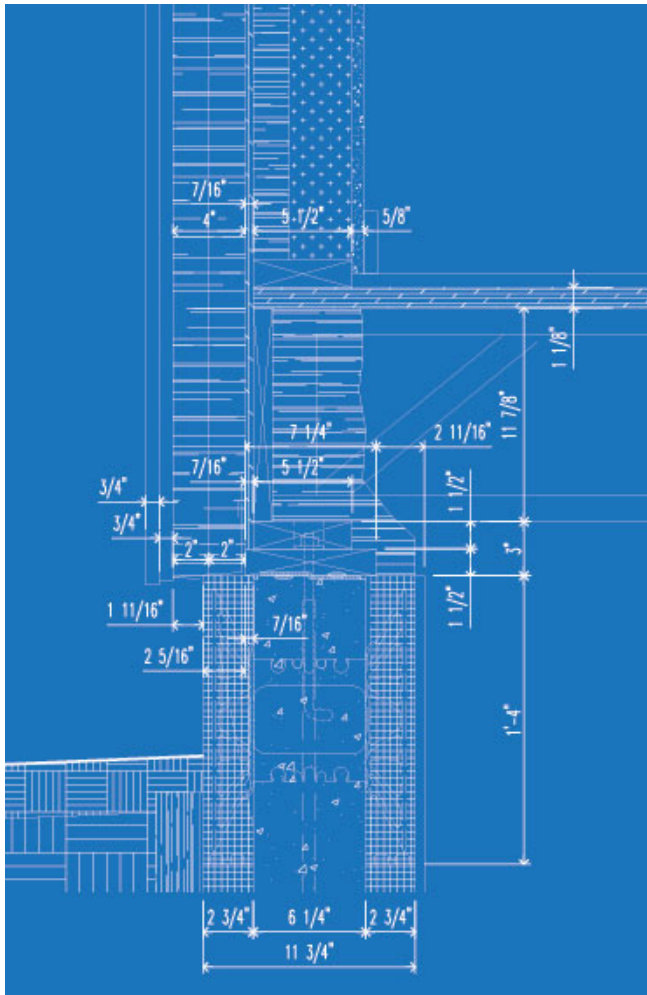


COMPONENTS

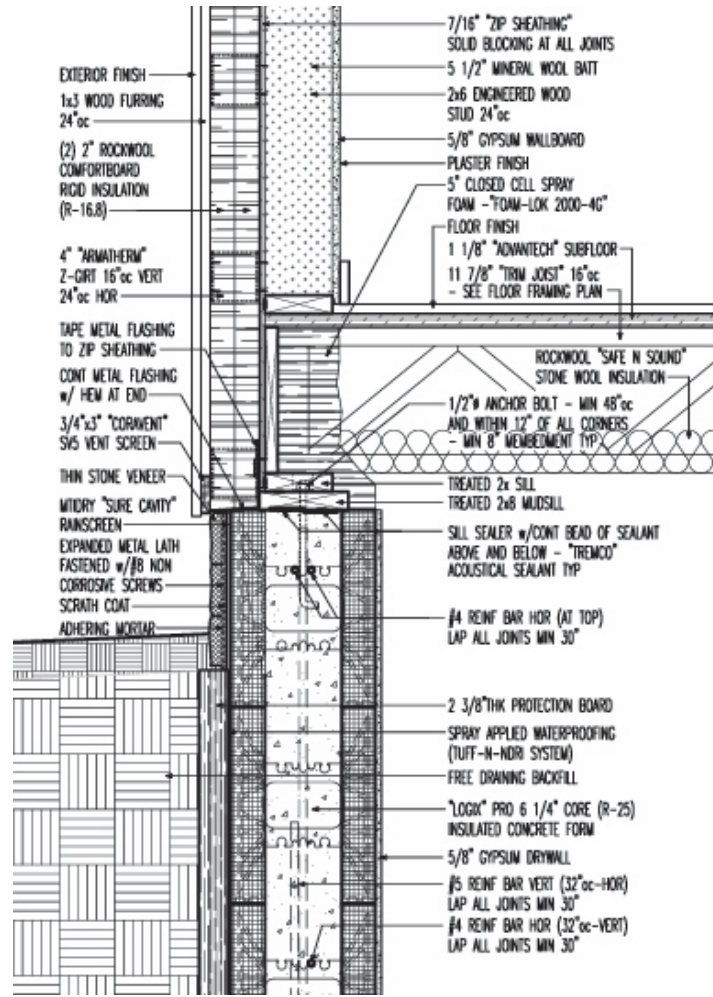


PERFORMANCE

ARE
DETAILS
BILINGUAL?



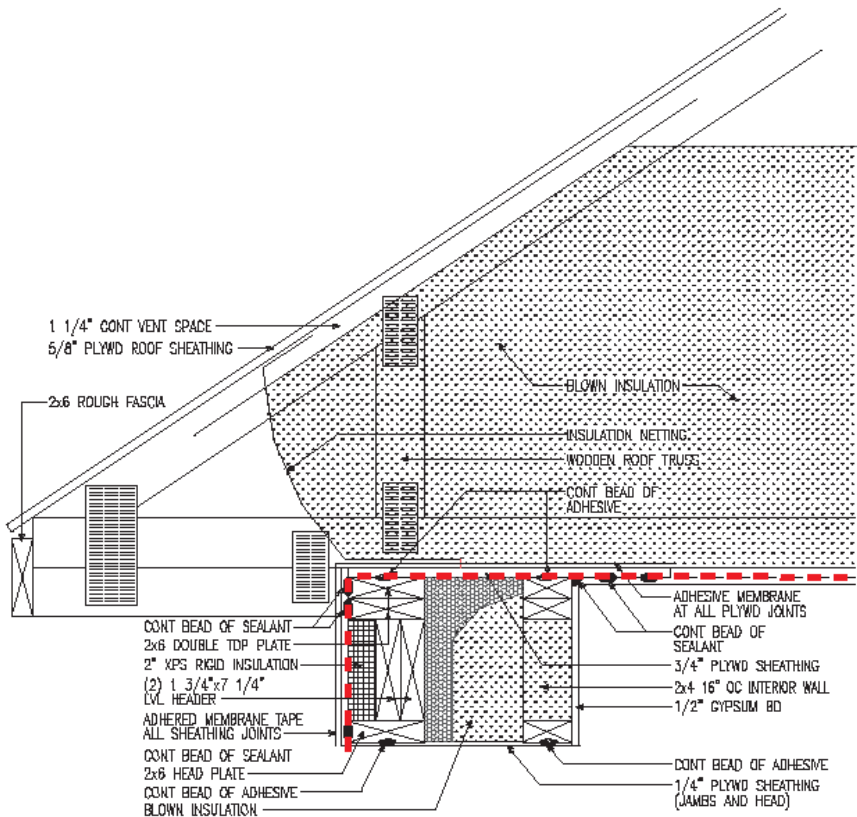
DIMENSIONS



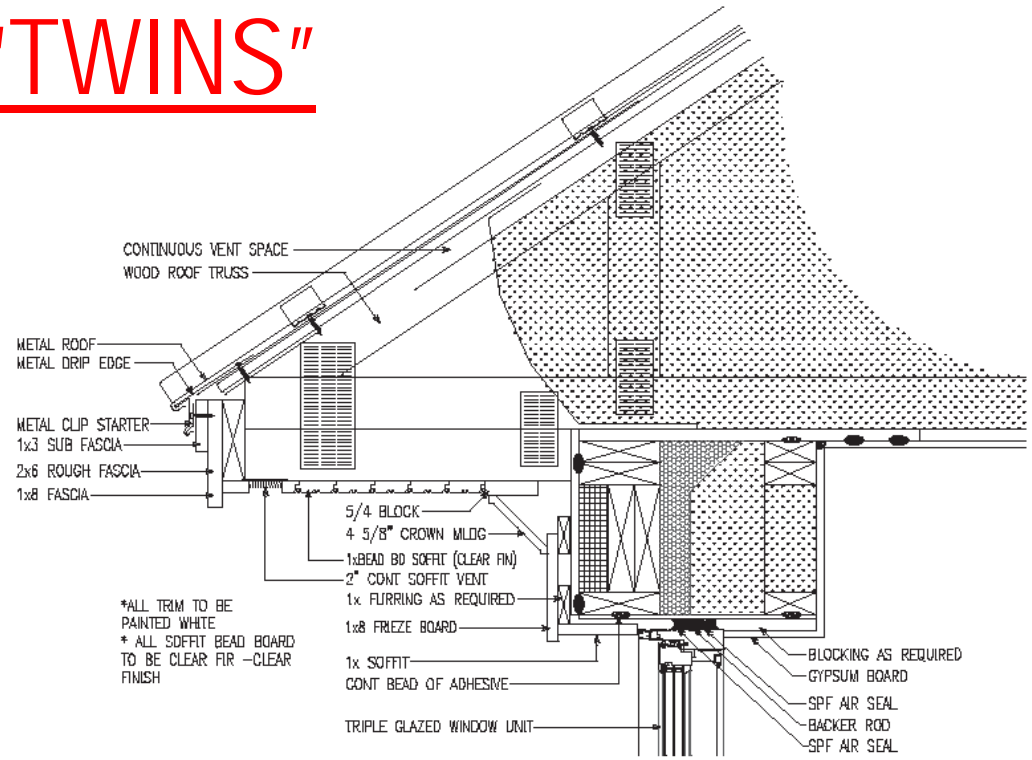
COMPONENTS

CAN
DETAILS
HAVE
A TWIN?

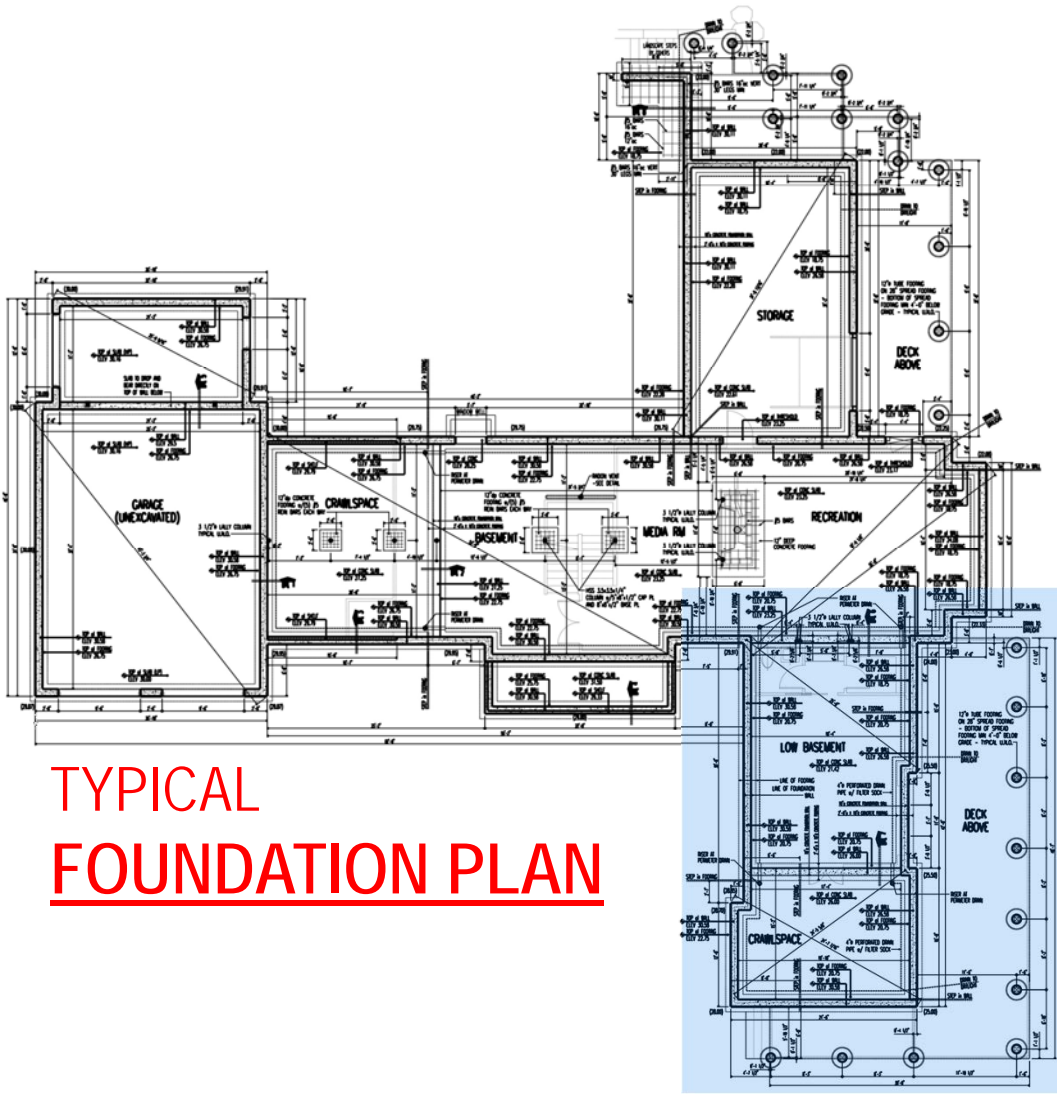
"TWINS"



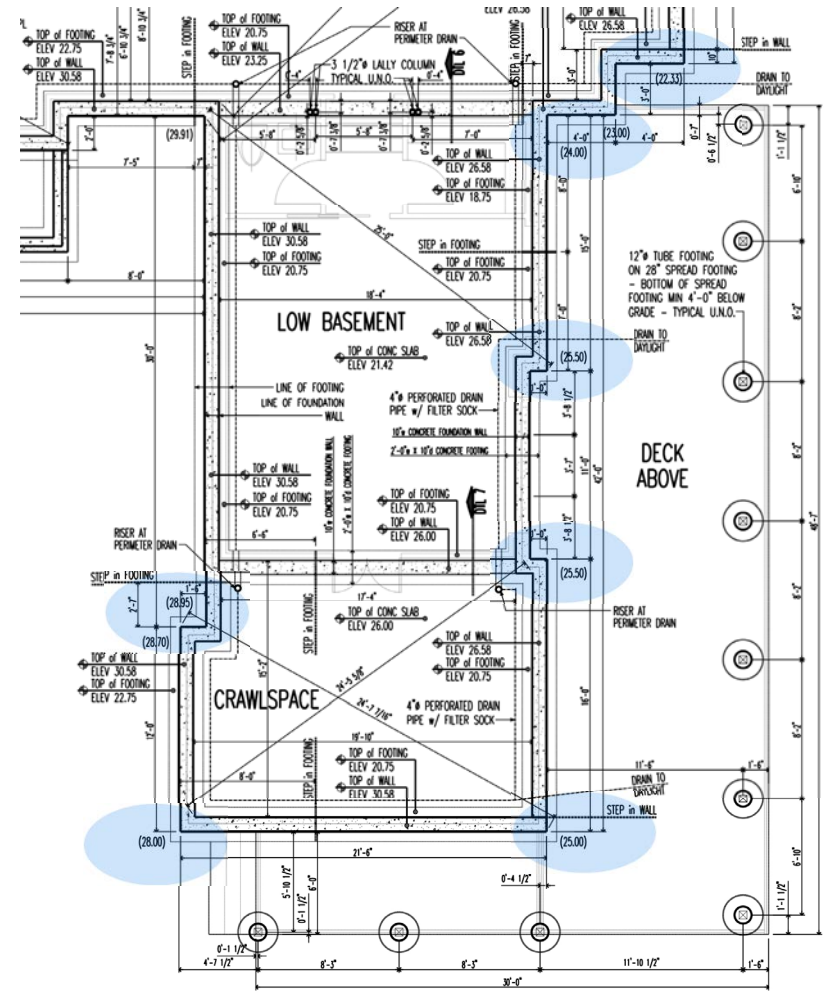
FRAMER



TRIM CARPENTER



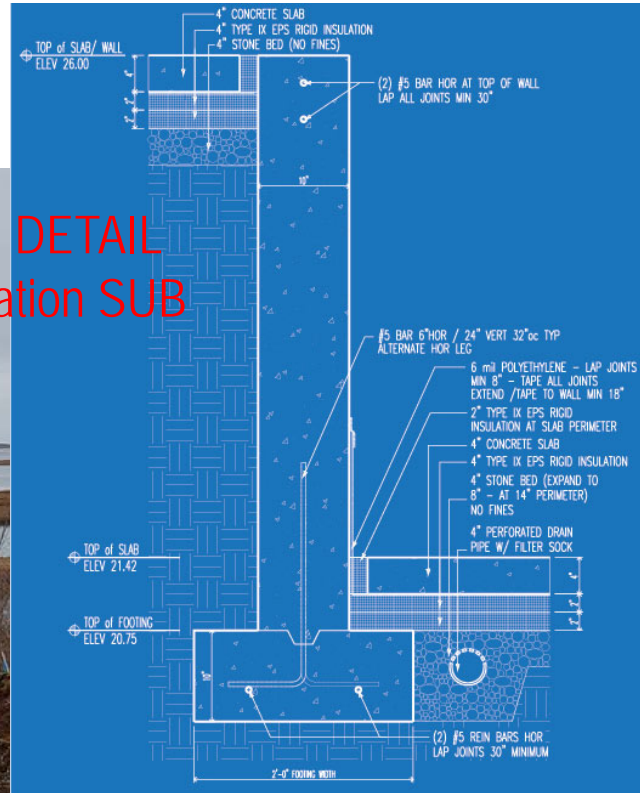
TYPICAL FOUNDATION PLAN



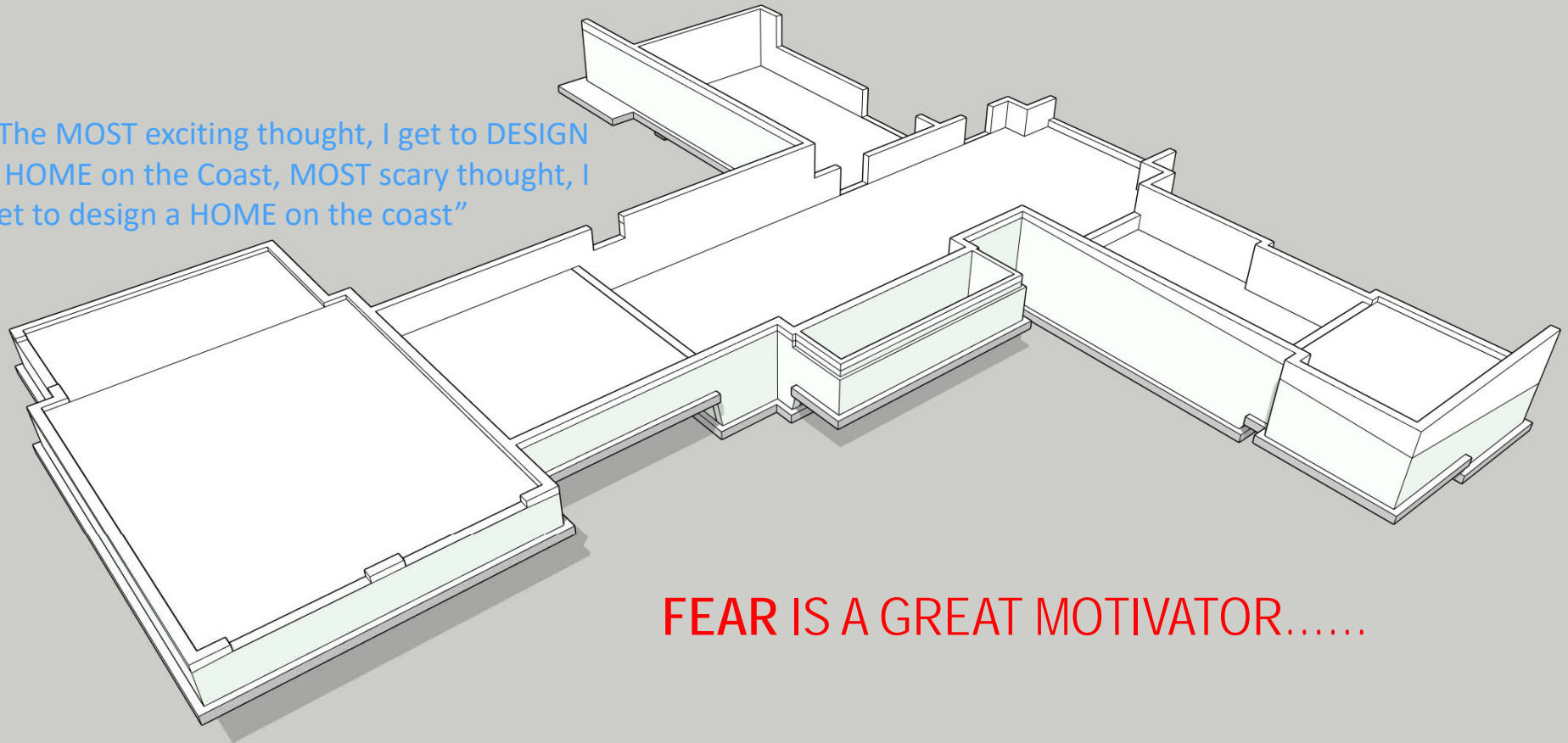
BLOWN UP SECTION



FOUNDATION DETAIL For the Foundation SUB



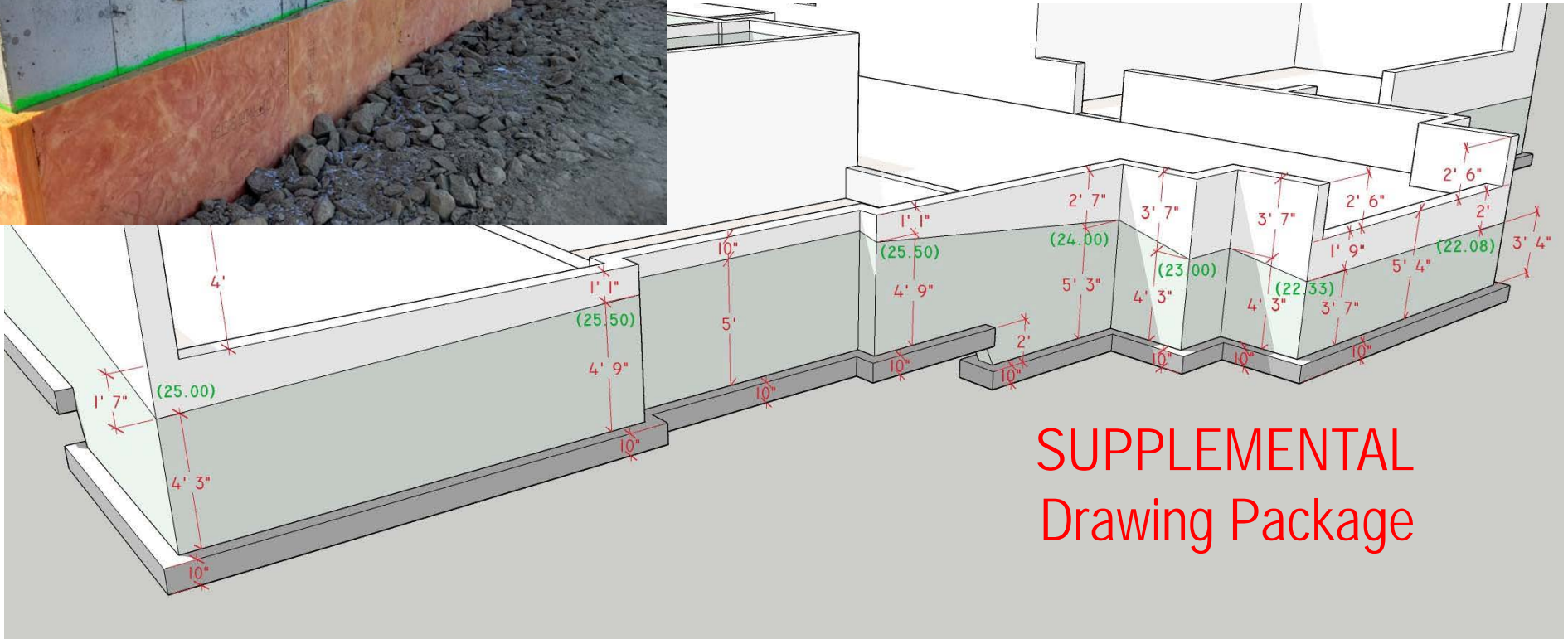
“The MOST exciting thought, I get to DESIGN a HOME on the Coast, MOST scary thought, I get to design a HOME on the coast”



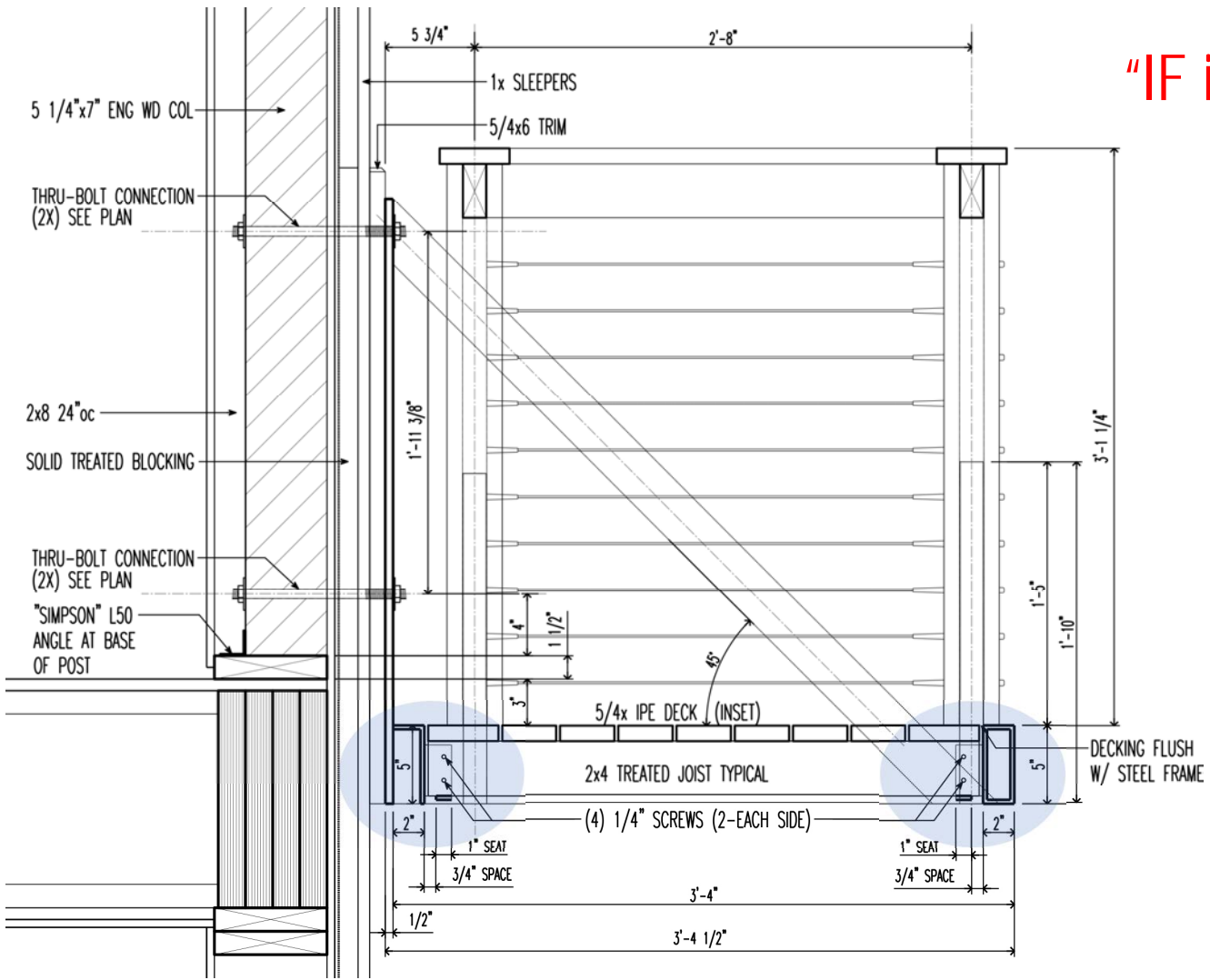
FEAR IS A GREAT MOTIVATOR.....



NOTE the Green Line



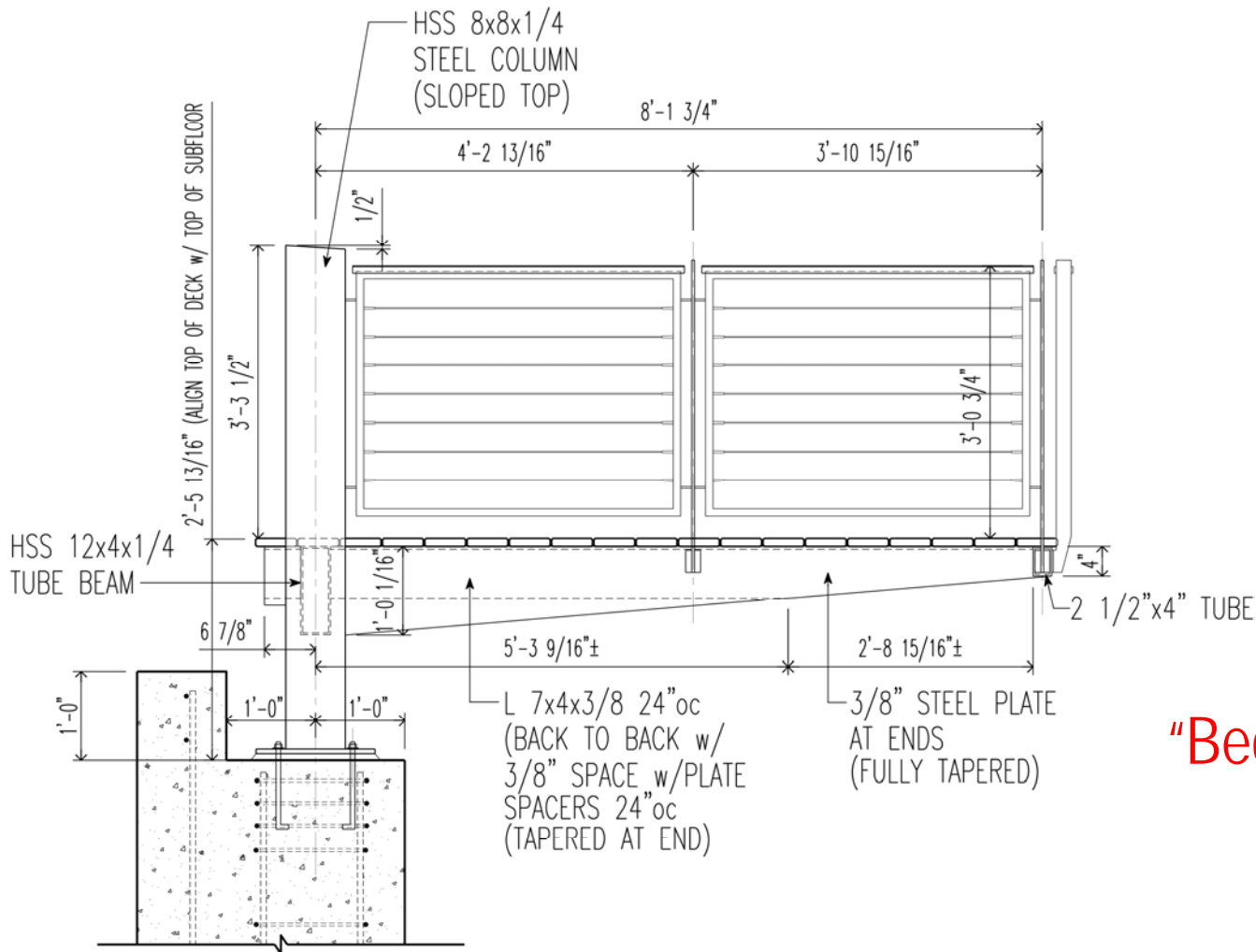
**SUPPLEMENTAL
Drawing Package**



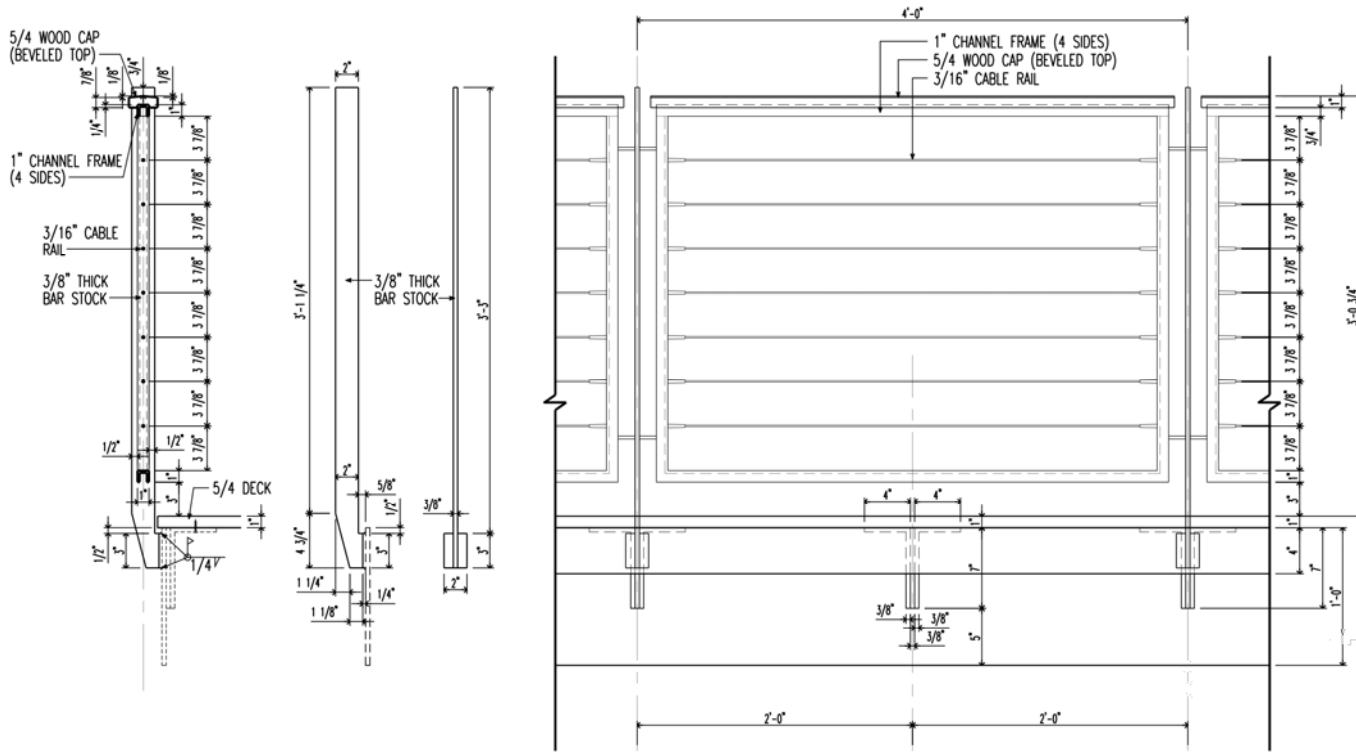
“IF it don’t LAST

It don’t MATTER”

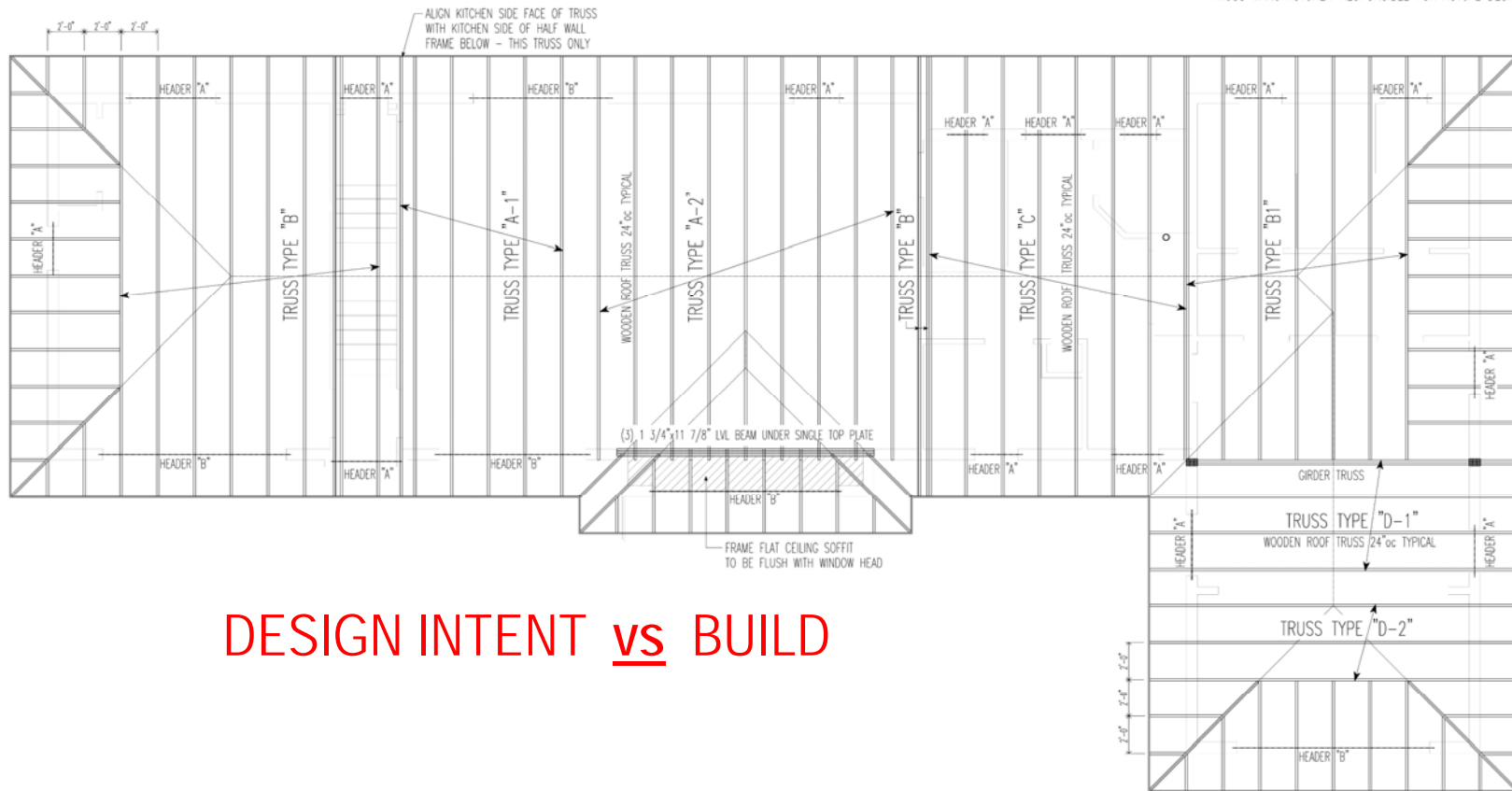
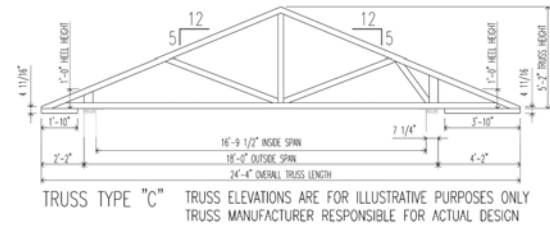
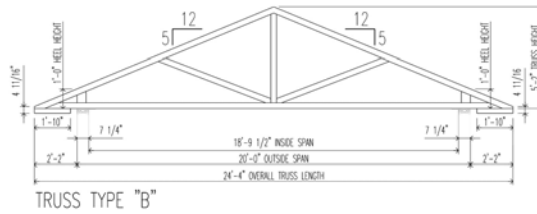
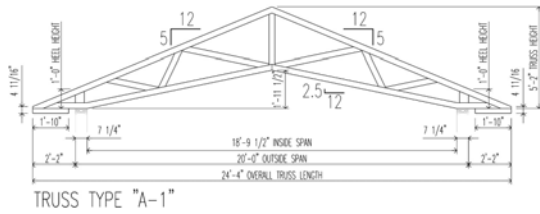




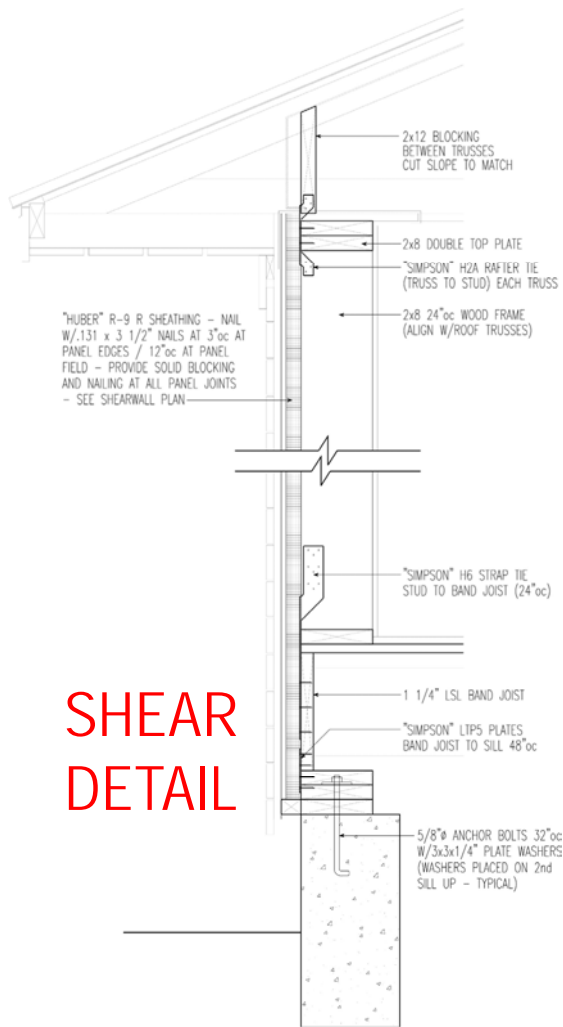
"Because I draw IT
 I think about IT"



“Performs AS GOOD AS it Looks”
MERGING AESTHETICS WITH SOUND BUILDING SCIENCE



DESIGN INTENT vs BUILD



SHEAR DETAIL

SHEAR WALL SCHEDULE

WALL TYPE	SHEATHING	NAILING		SOLID BLOCKING AT ALL PANEL EDGES
		PANEL EDGES (PERIMETER)	PANEL FIELD	
①	2" ZIP R-9 SHEATHING - EXTERIOR 1/2" GWD - INTERIOR SIDE	3.5"x.131" NAILS AT 3" ON CENTER SCREWS AT 7" ON CENTER	3.5"x.131" NAILS AT 12" ON CENTER SCREWS AT 12" ON CENTER	REQUIRED
②	1/2" GWD - ONE SIDE 1/2" GWD - OPPOSITE SIDE	SCREWS AT 7" ON CENTER	SCREWS AT 12" ON CENTER	REQUIRED
③	7/16" ZIP SHEATHING - EXTERIOR 1/2" GWD - INTERIOR SIDE	8d AT 4" ON CENTER SCREWS AT 7" ON CENTER	8d AT 12" ON CENTER SCREWS AT 12" ON CENTER	REQUIRED

1. SEE SHEAR WALL PLAN FOR WALL LABELS AND LOCATIONS
 2. NAILS TO BE COMMON OR BOX NAILS - GUN NAILS MUST BE INCREASED 1 NOMINAL SIZE (8d MUST BE REPLACED WITH 10d)
 3. SOLID BLOCKING EQUAL TO STUD THICKNESS - MUST BE PROVIDED AT ALL PANEL EDGES. ALL PANEL EDGES MUST BE NAILED TO STUDS AND BLOCKING PER SCHEDULE. PANEL EDGES MUST ALIGN WITH CENTER OF BLOCKING. BLOCKING MAY BE ORIENTED IN EITHER DIRECTION.

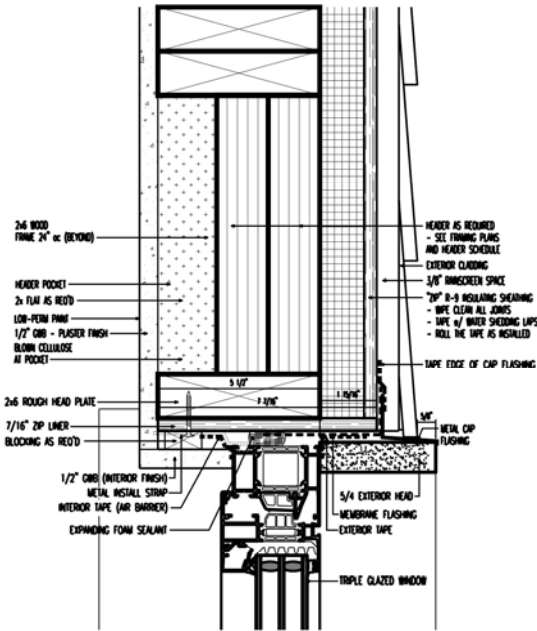


SHEAR PLAN

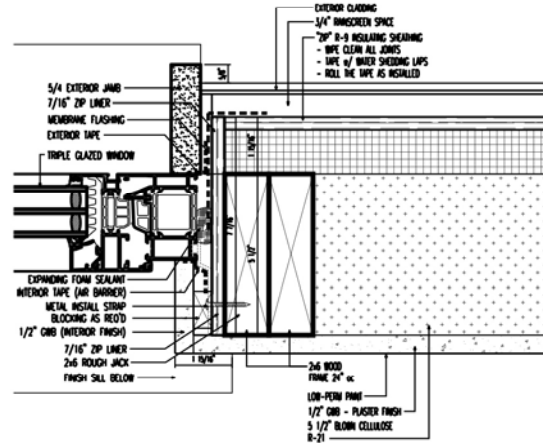
NOTE: SPECIAL INSPECTION BY ENGINEER OF RECORD REQUIRED BY BUILDING CODE FOR ALL R-SHEATHING INSTALLATIONS WHEN USED FOR WALL BRACING. GENERAL CONTRACTOR TO COORDINATE W/ STRUCTURAL ENGINEER AND ARCHITECT TO VISIT SITE FOR INSPECTION. ALL SHEATHING MUST BE EXPOSED AND ALL NAILS VISIBLE AT TIME OF INSPECTION VISIT.

FOCUSED INFORMATION

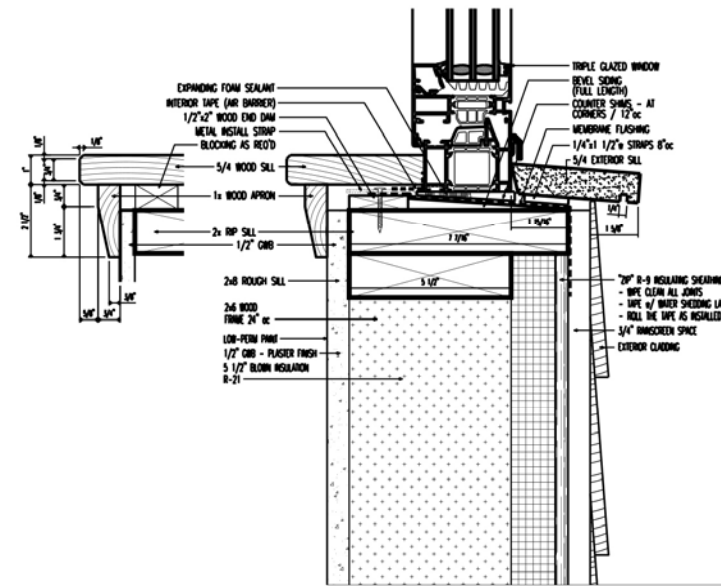
TYPICAL WINDOW DETAILS ~ 9 GENERATIONS



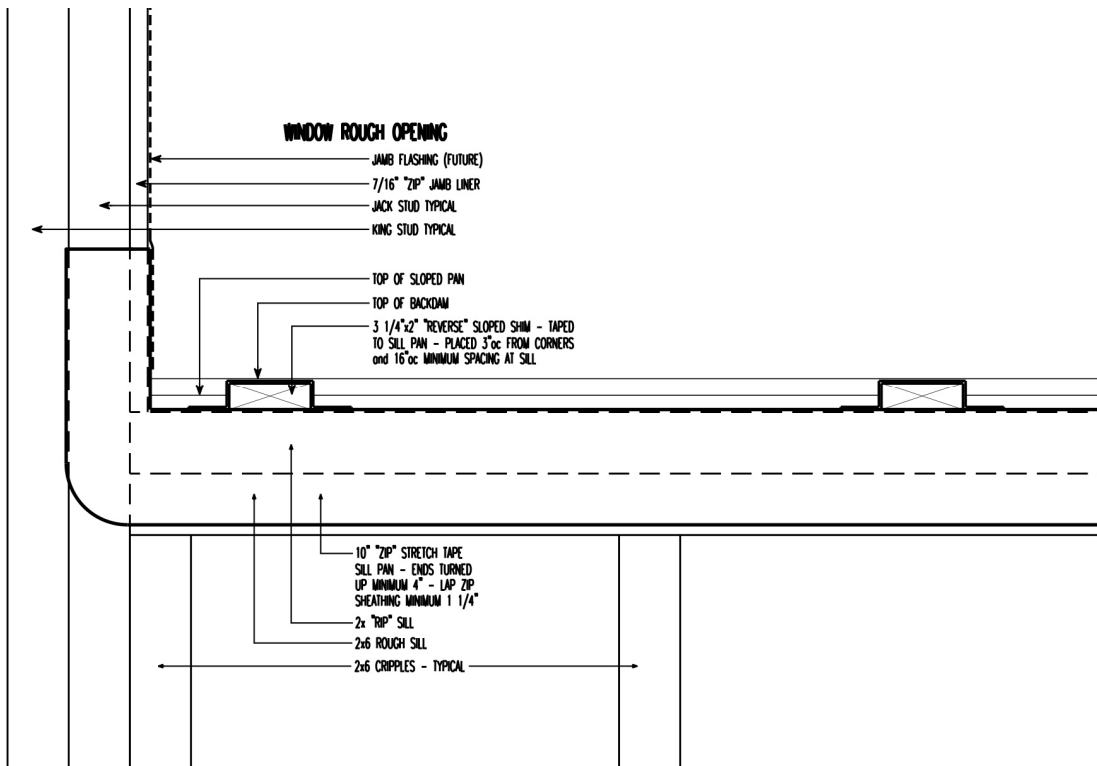
HEAD



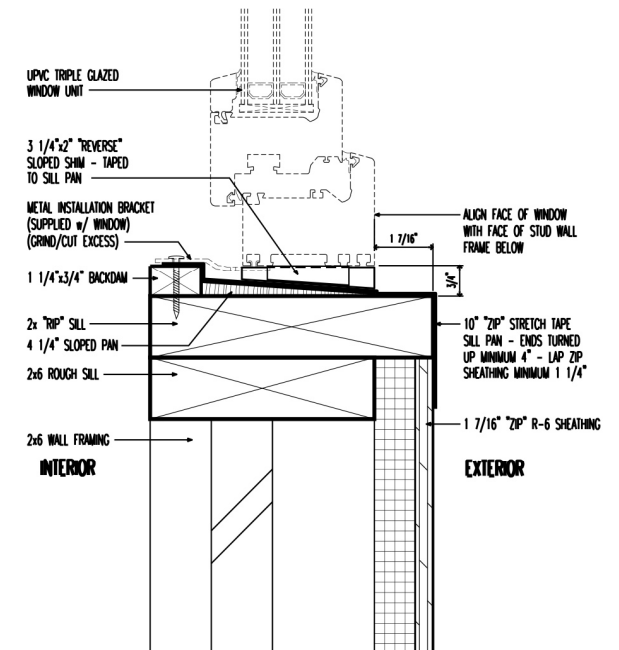
JAMB



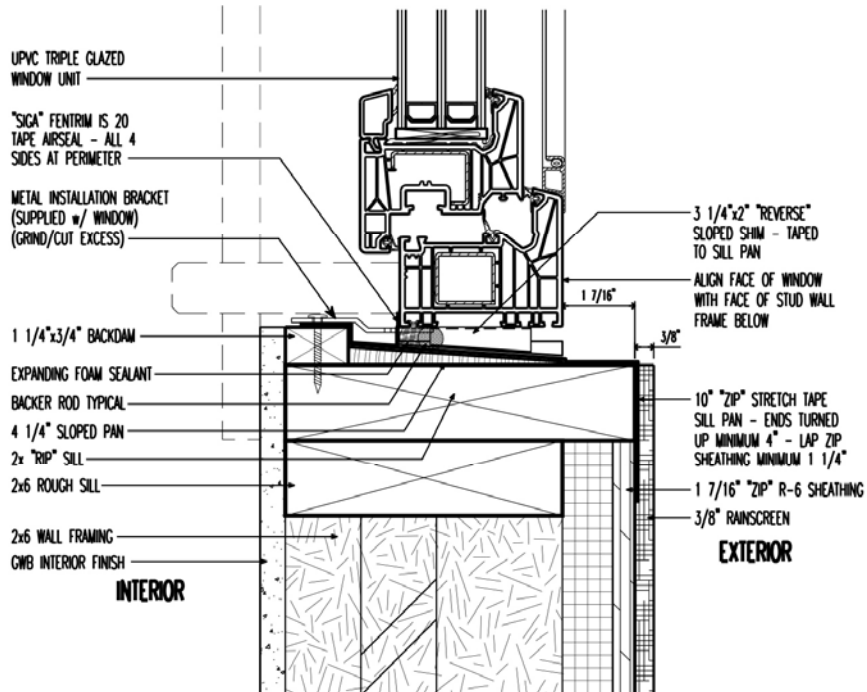
SILL



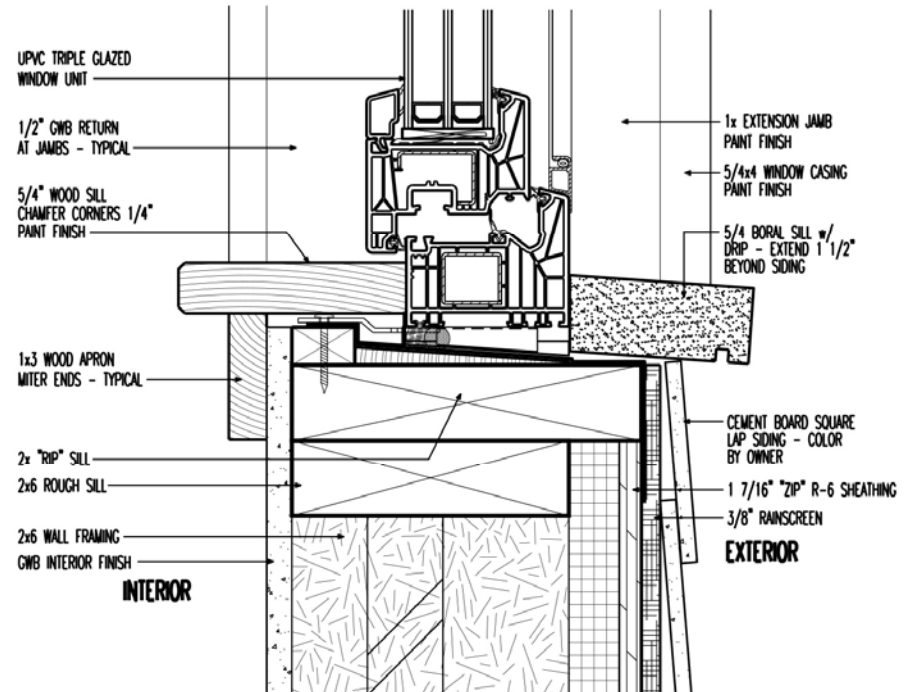
DETAIL #2



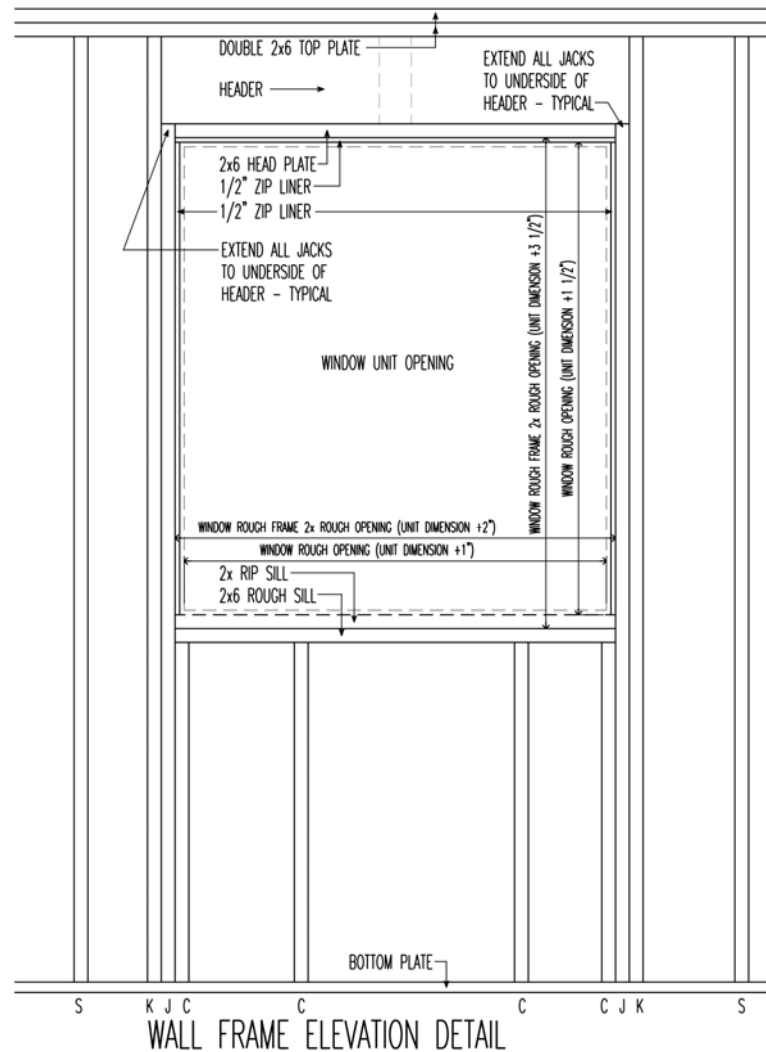
DETAIL #1



DETAIL #3

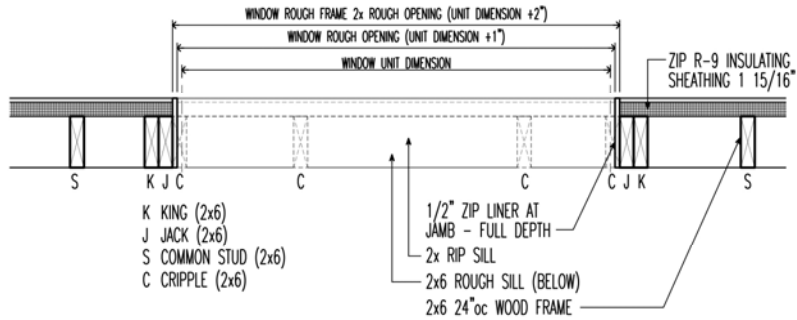


DETAIL #4



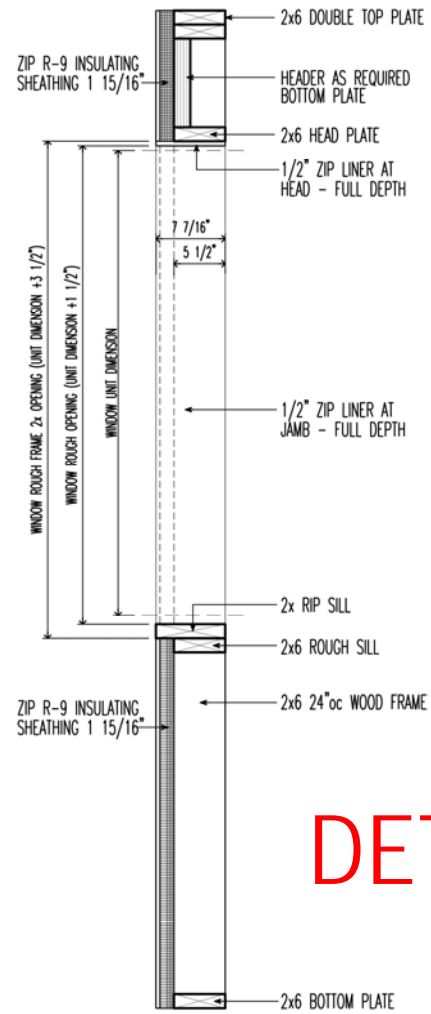
AND IT
DOESN'T
STOP
THERE

DETAIL #5



WALL FRAME PLAN DETAIL

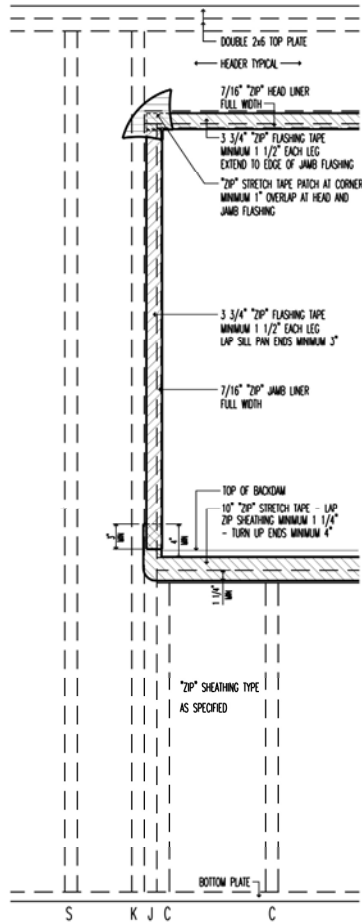
DETAIL #7



WALL FRAME SECTION DETAIL

DETAIL #6

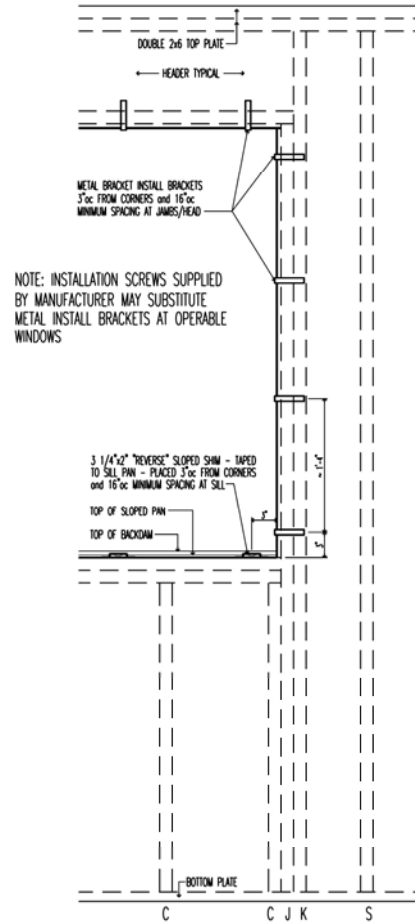
DETAIL #9



WINDOW FLASHING DETAIL
(VIEWED FROM EXTERIOR)

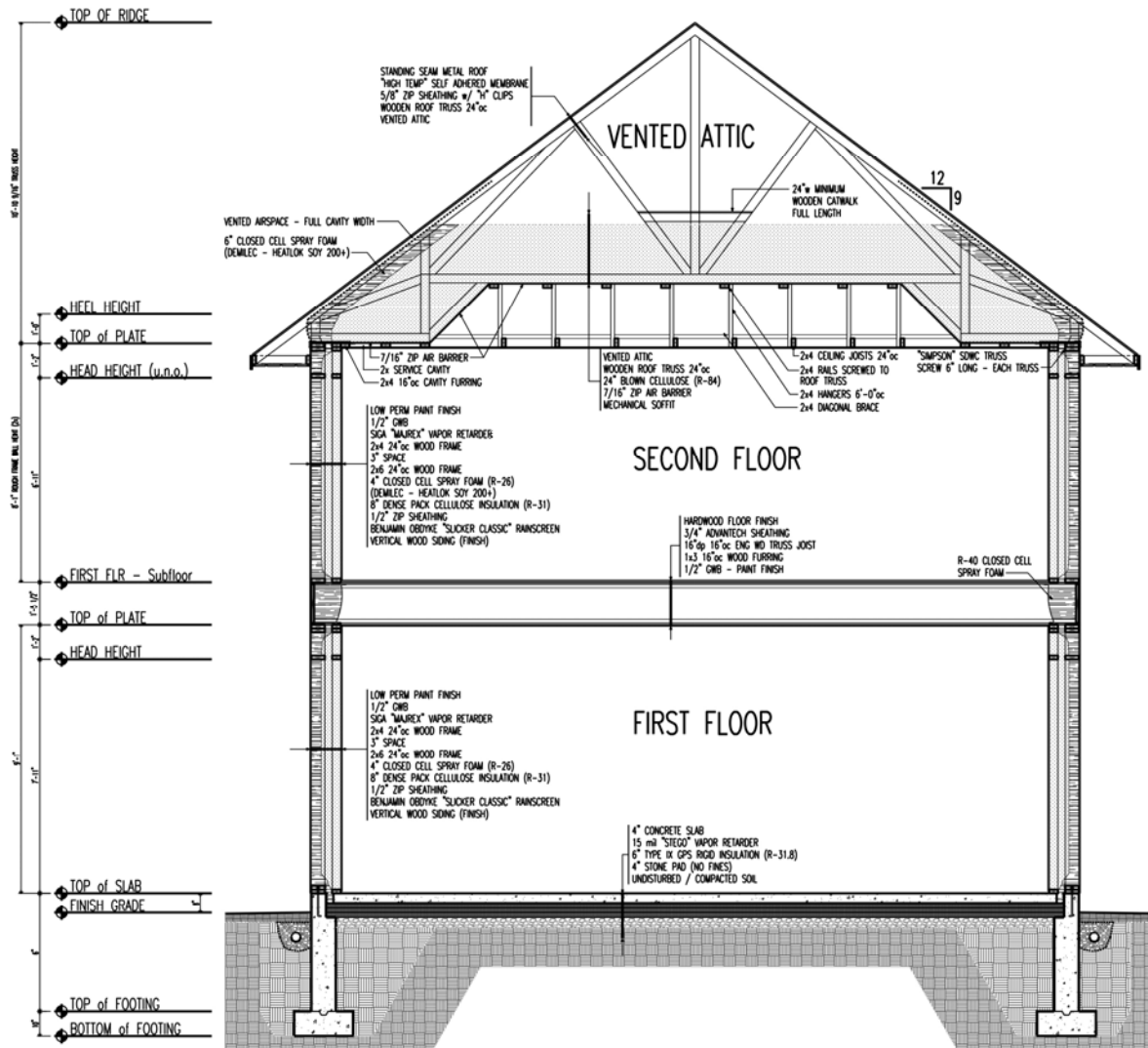
- K KING (2x6)
- J JACK (2x6)
- S COMMON STUD (2x6)
- C CRIPPLE (2x6)

DETAIL #8



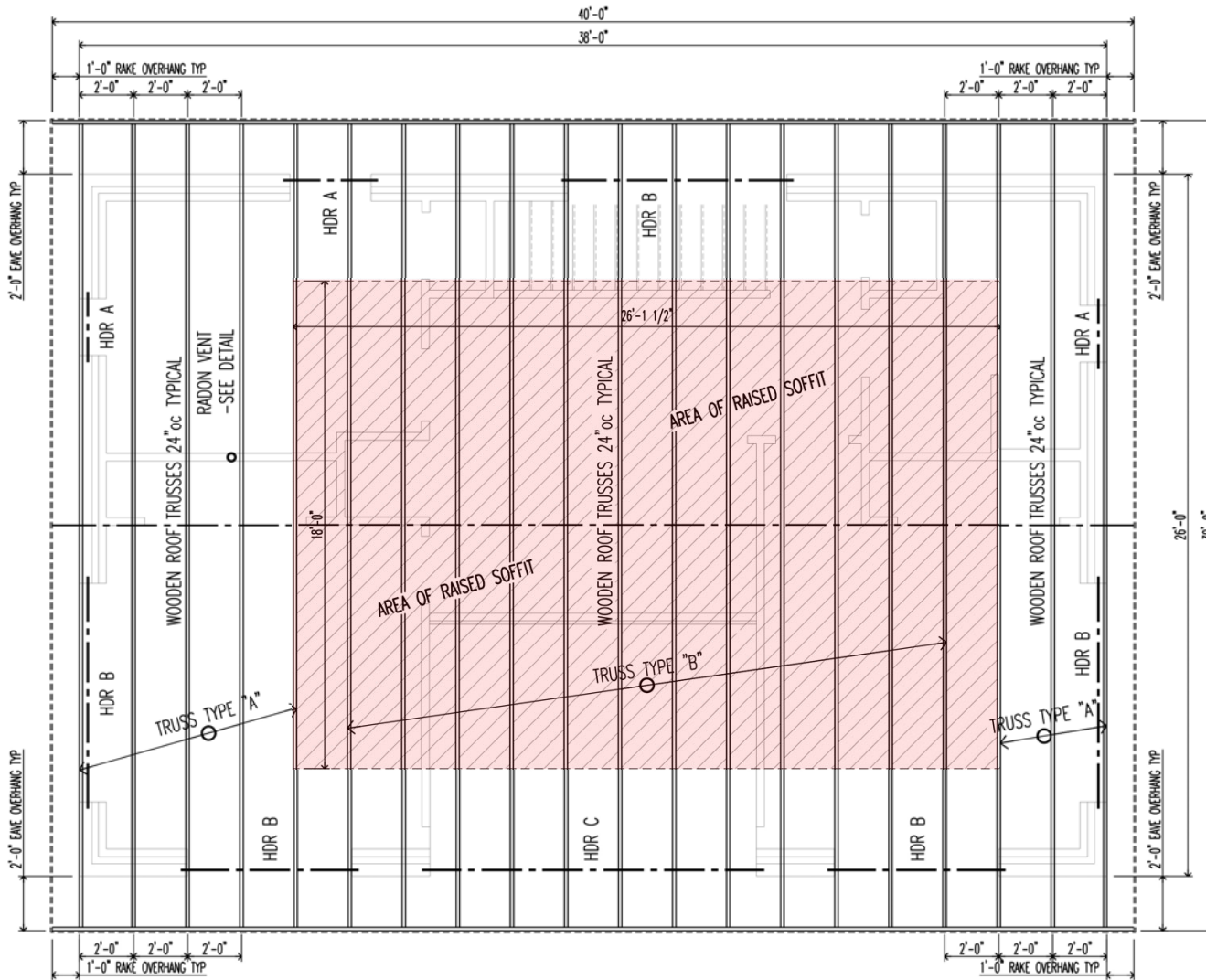
BRACKET/SCREW LOCATIONS
(VIEWED FROM EXTERIOR)

- K KING (2x6)
- J JACK (2x6)
- S COMMON STUD (2x6)
- C CRIPPLE (2x6)

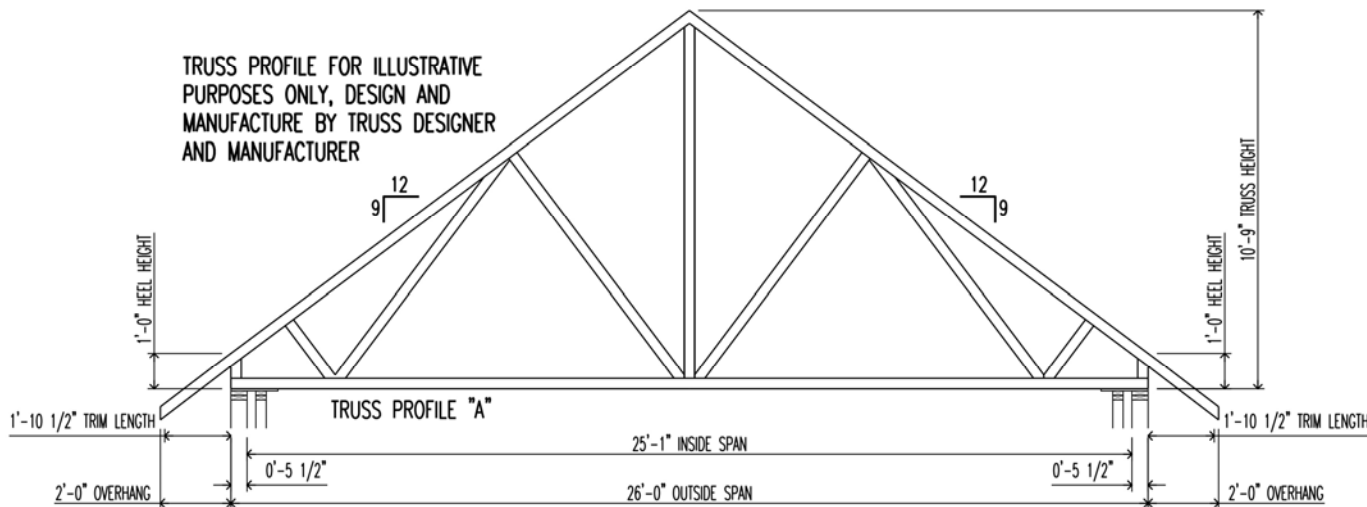
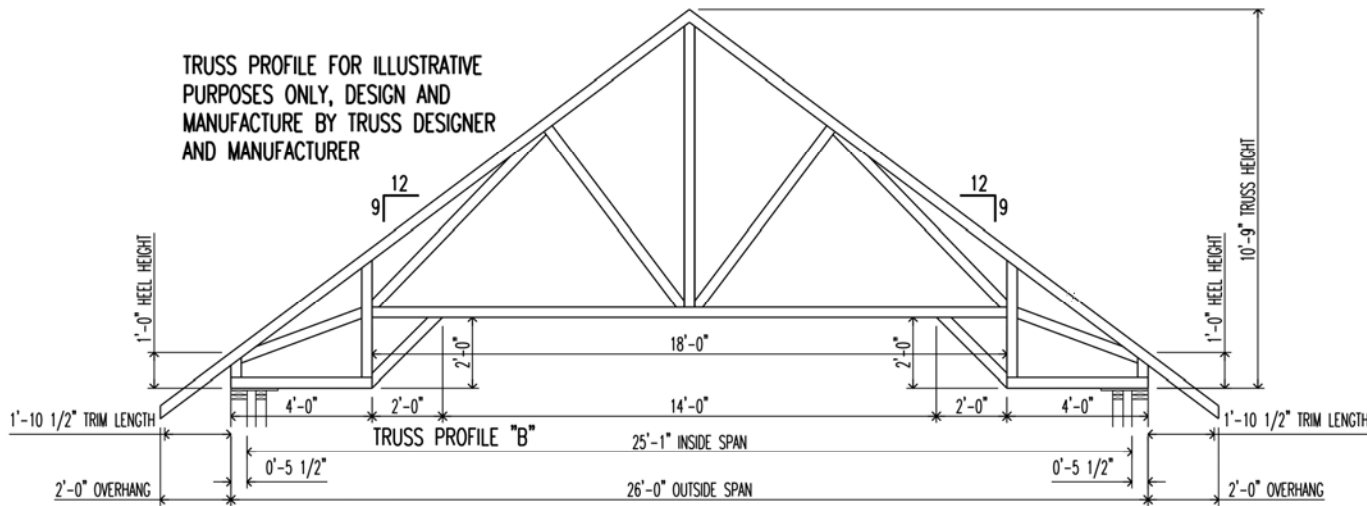


"I HAVE AN IDEA"

DEVELOPED THE IDEA IN SECTION

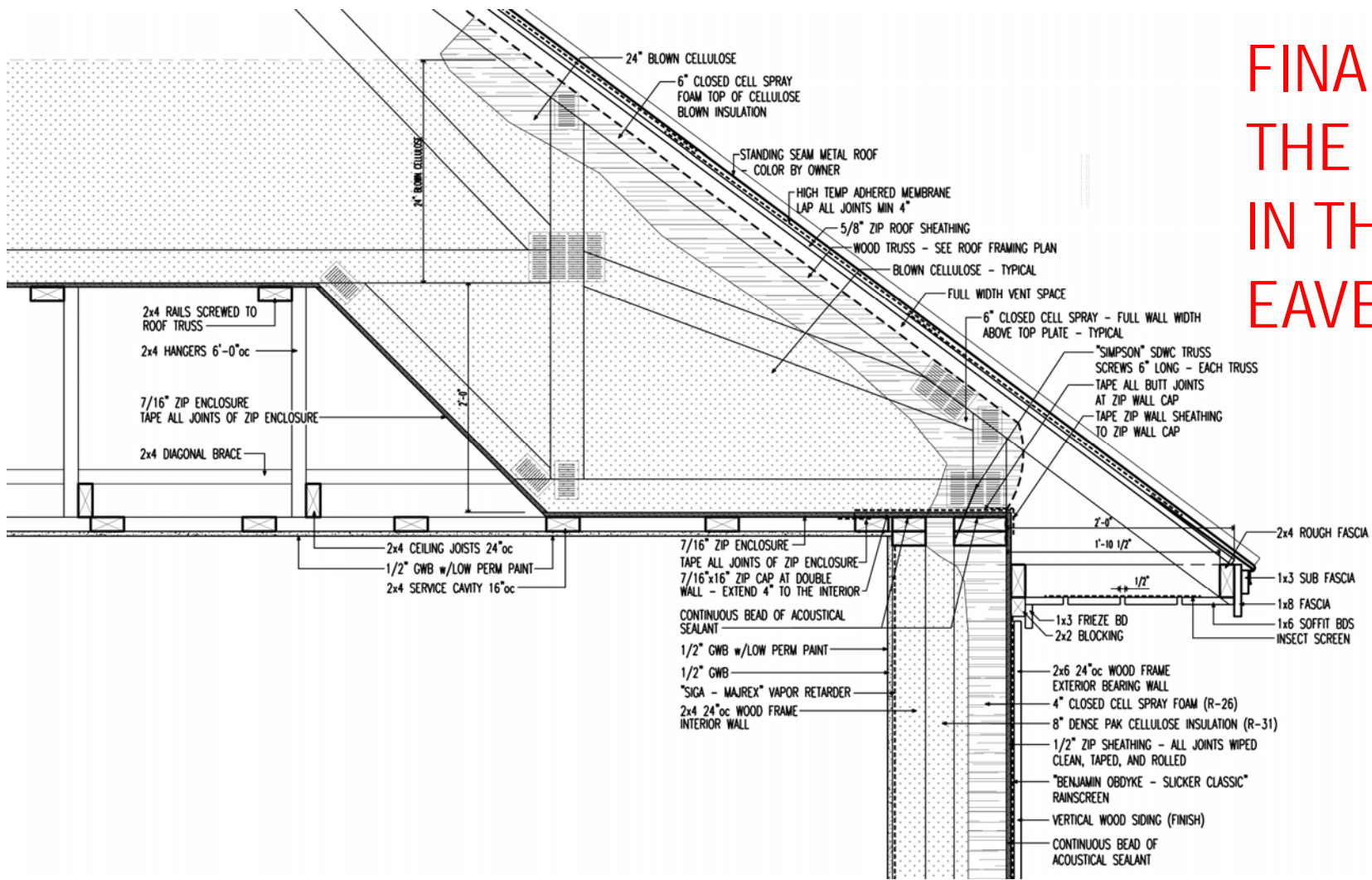


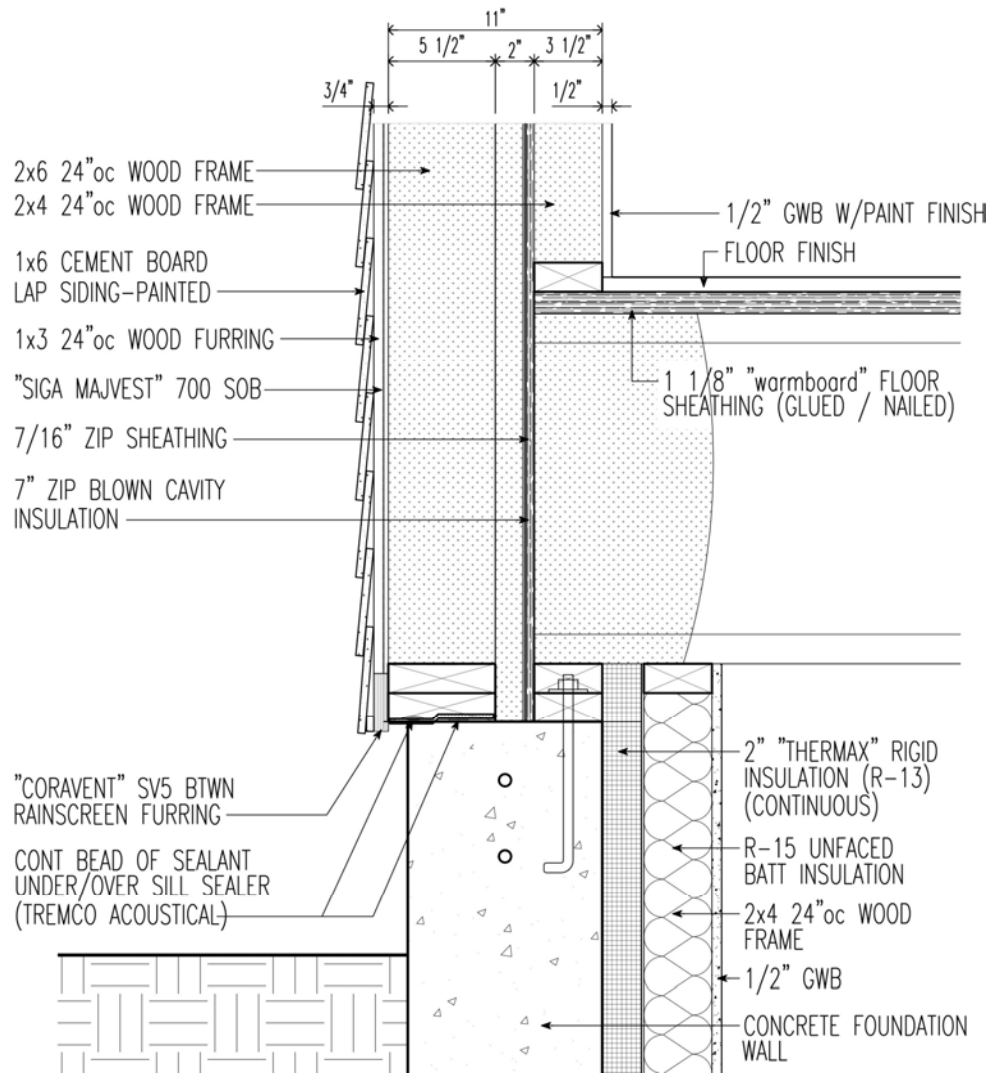
TRANSLATED
THE IDEA
IN THE ROOF
FRAMING PLAN



ILLUSTRATED
THE IDEA
IN THE ROOF
TRUSS
ELEVATIONS

FINALIZED THE IDEA IN THE ROOF EAVE DETAIL



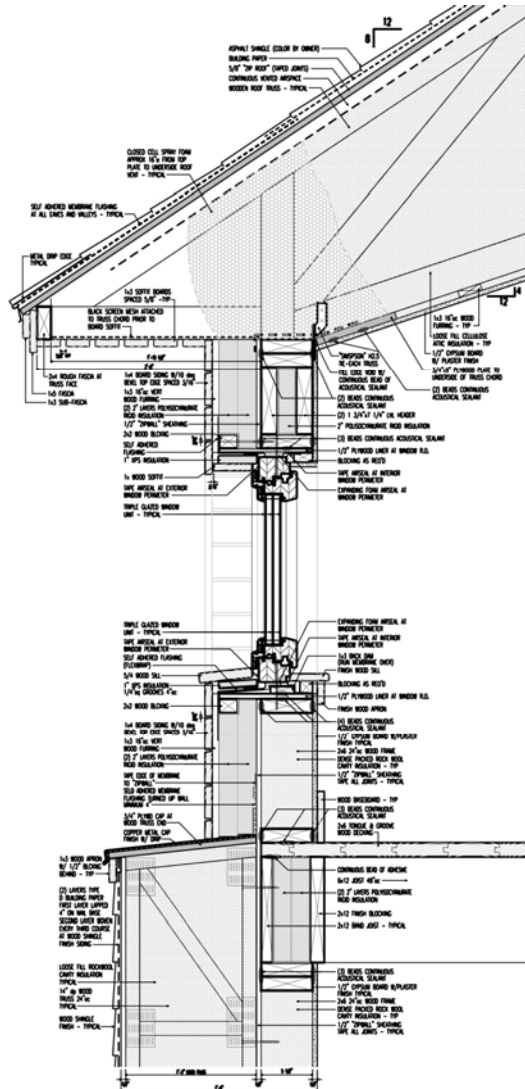


THE FUTURE ??

NEXT GENERATION

"PERFECT WALL"

COMING REAL SOON



AND YES!!

DETAILS SHOULD ALWAYS

LOOK GOOD!!!!

THANK YOU FOR JOINING ME !!!