

Joseph Lstiburek, Ph.D., P.Eng, ASHRAE Fellow

Building Science

Advanced Framing

www.buildingscience.com

Handouts can be downloaded from:
www.buildingscience.com

Building Science Corporation
2010

Joseph Lstiburek 2

R2



Building Science Corporation
2010

Joseph Lstiburek 3

R2

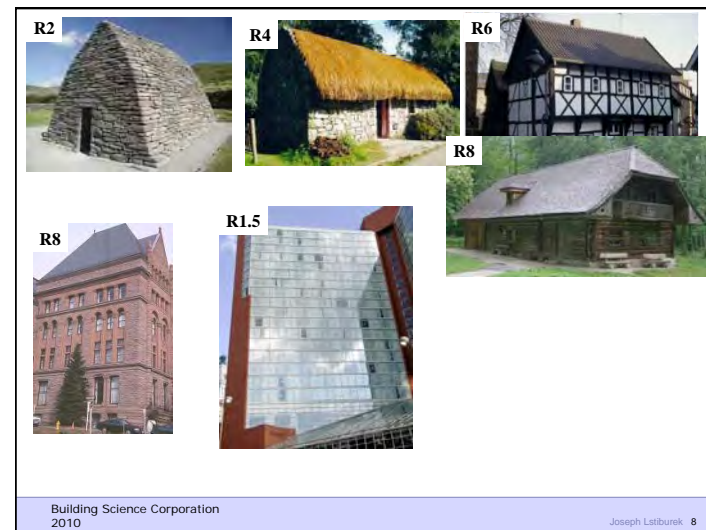
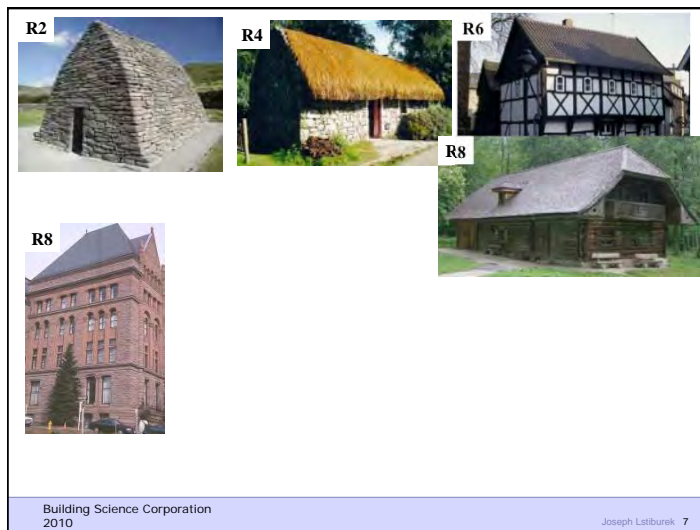
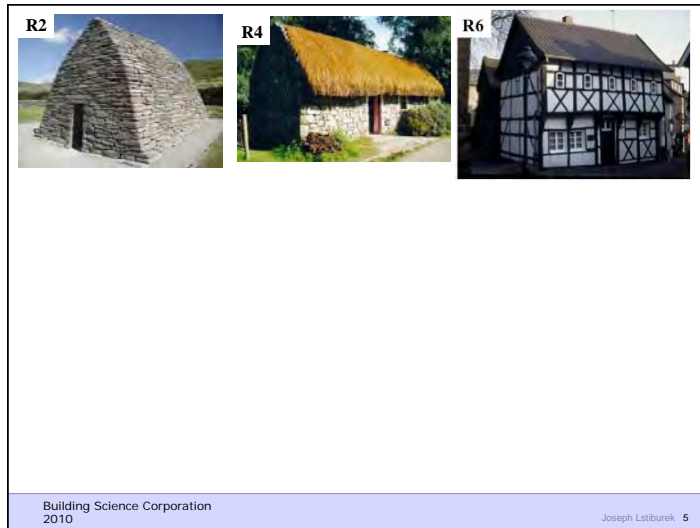


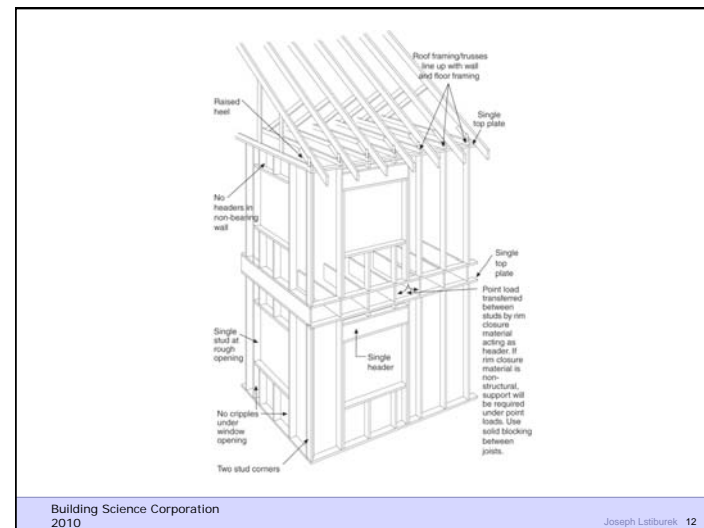
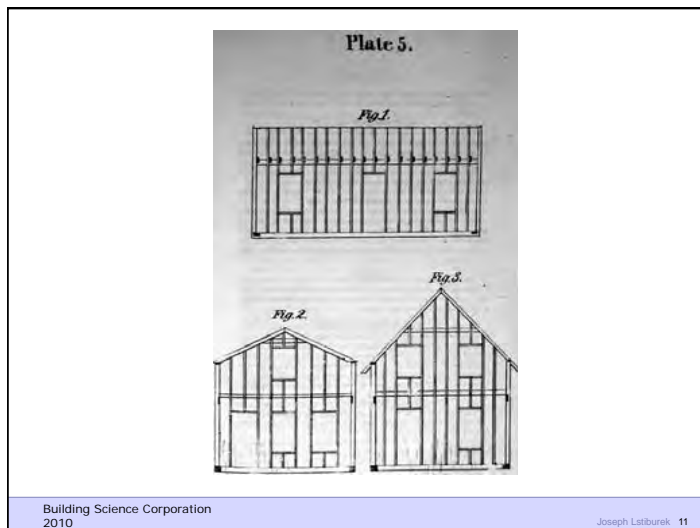
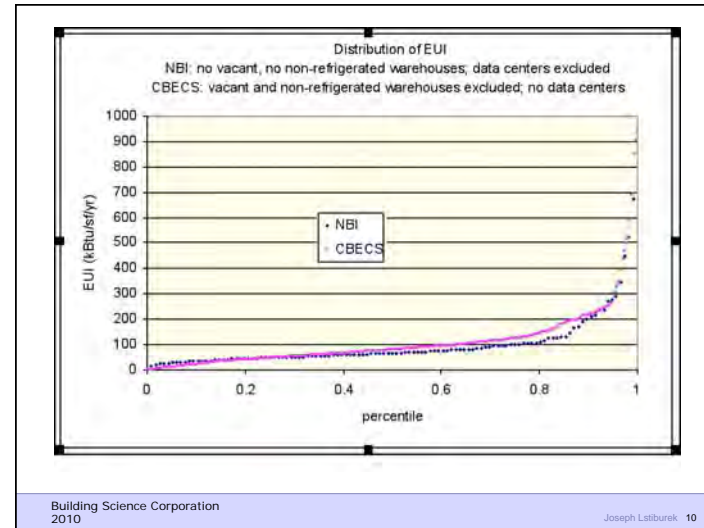
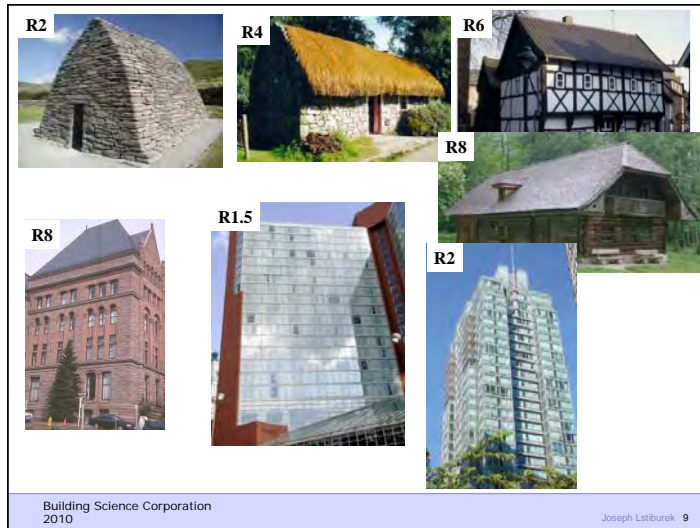
R4

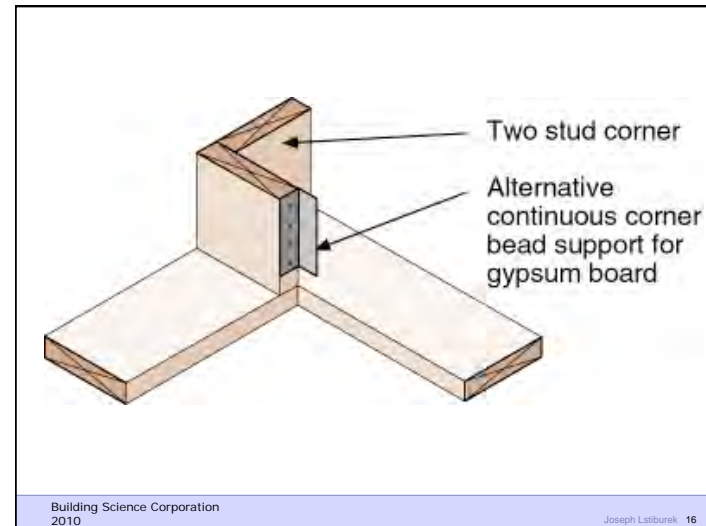
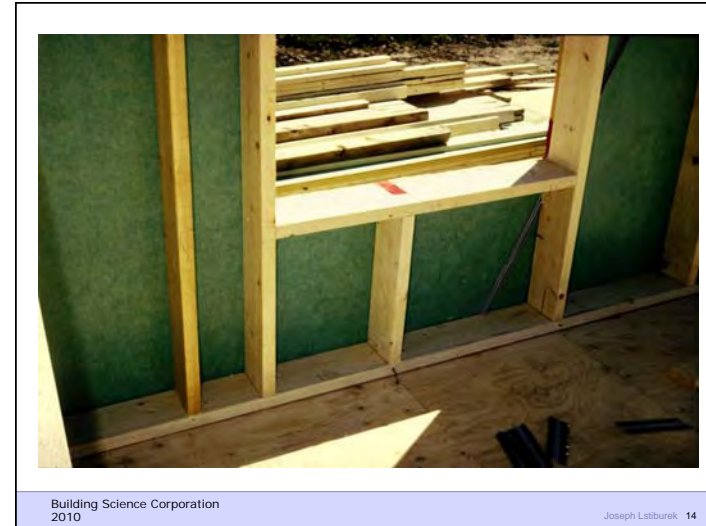


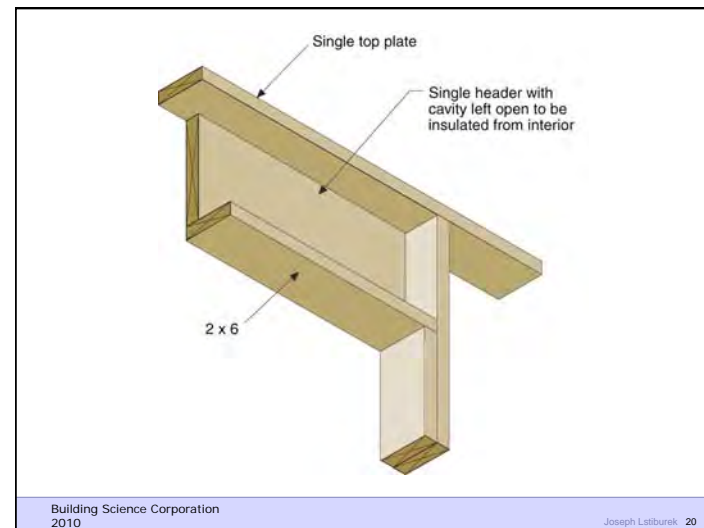
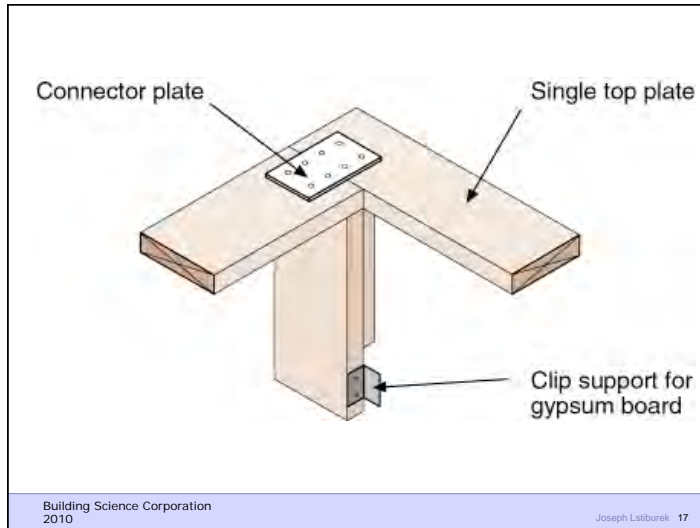
Building Science Corporation
2010

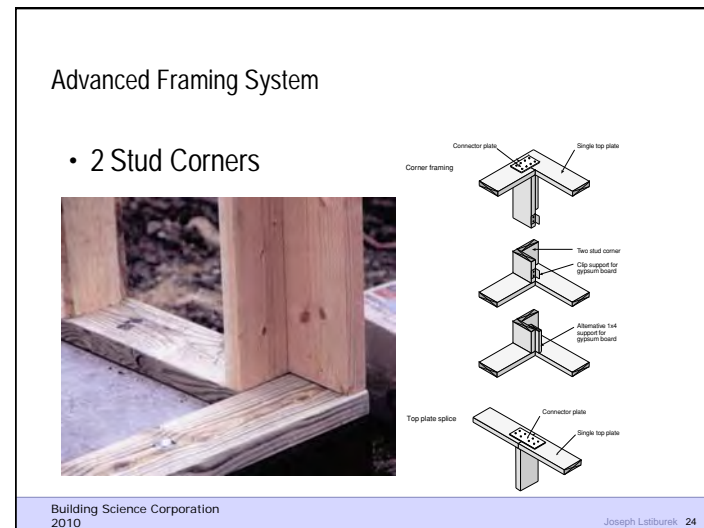
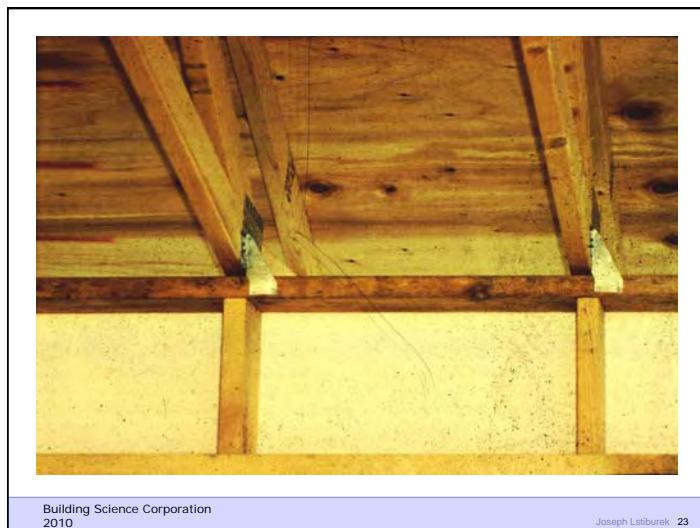
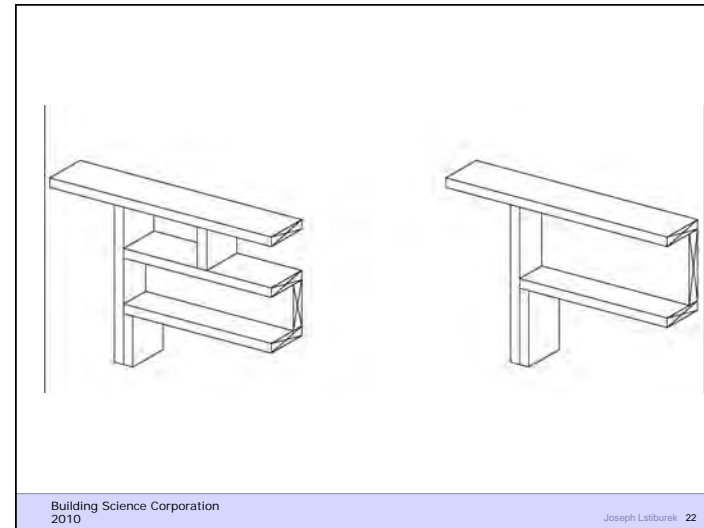
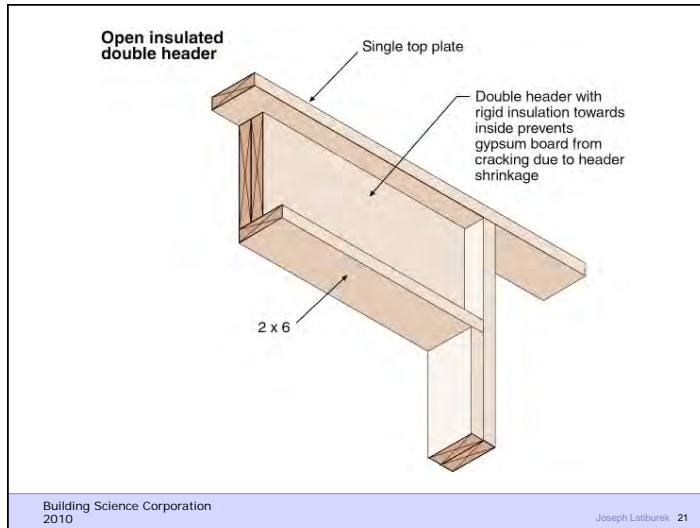
Joseph Lstiburek 4











Advanced Framing System

- Insulated headers
- No header necessary at non-bearing walls

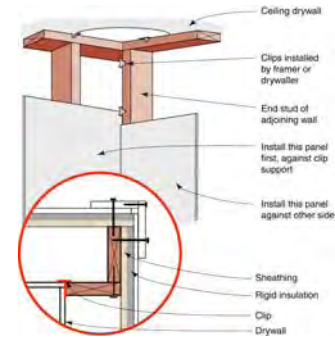


Building Science Corporation
2010

Joseph Lstiburek 25

Advanced Framing System

- Drywall clips allow for better installation with less drywall cracking



Building Science Corporation
2010

Joseph Lstiburek 26

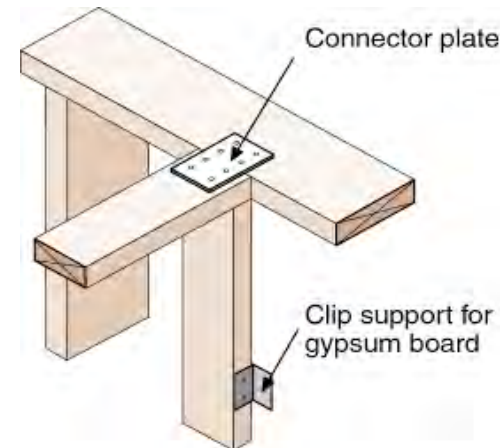
Advanced Framing System

- Drywall clips at corner and intersecting wall



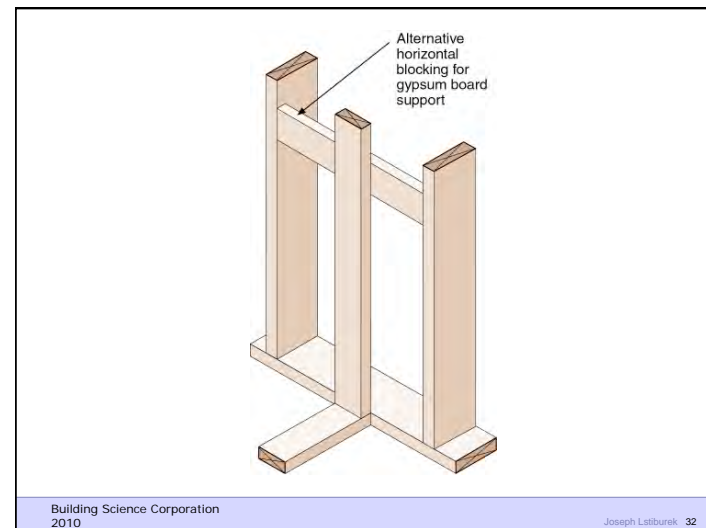
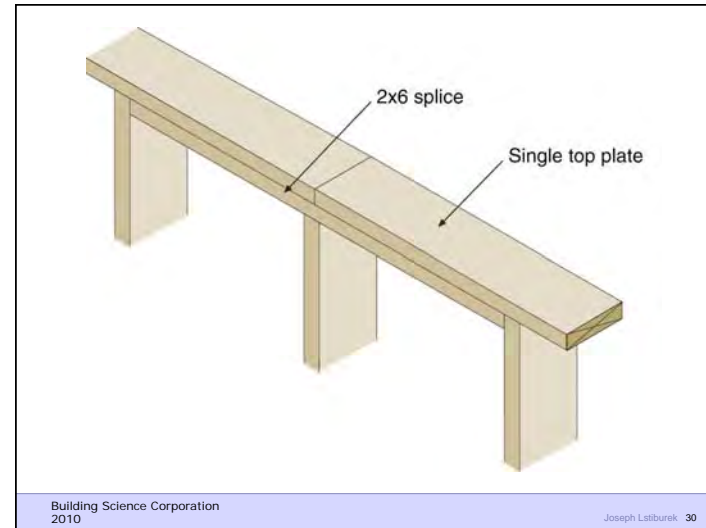
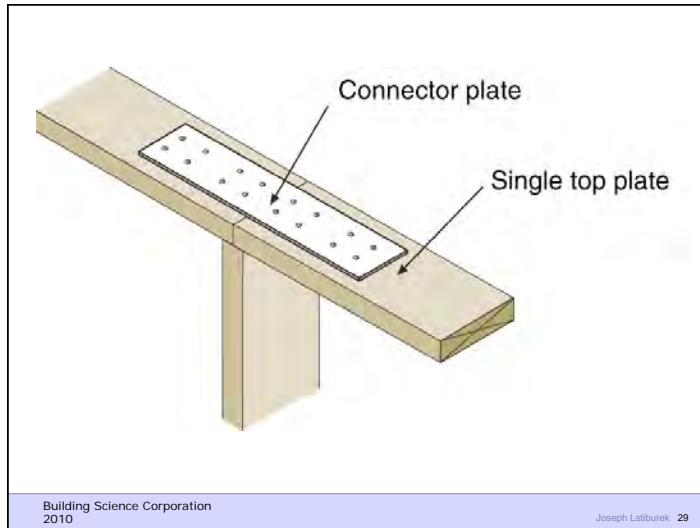
Building Science Corporation
2010

Joseph Lstiburek 27



Building Science Corporation
2010

Joseph Lstiburek 28





Building Science Corporation
2010

Joseph Lstiburek 33



Building Science Corporation
2010

Joseph Lstiburek 34



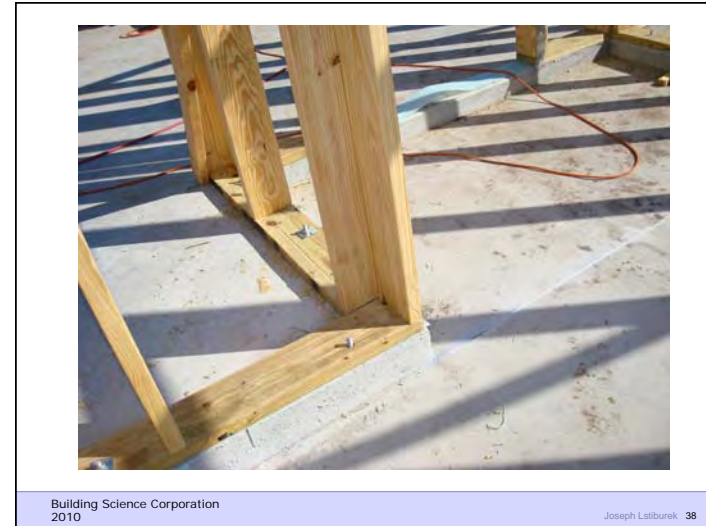
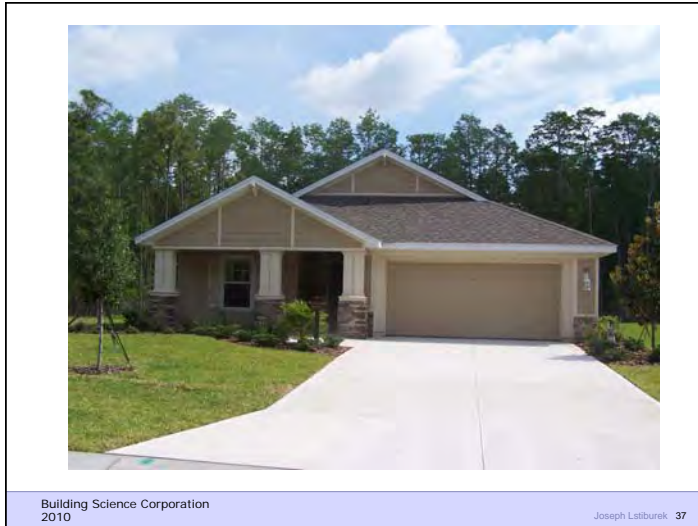
Building Science Corporation
2010

Joseph Lstiburek 35

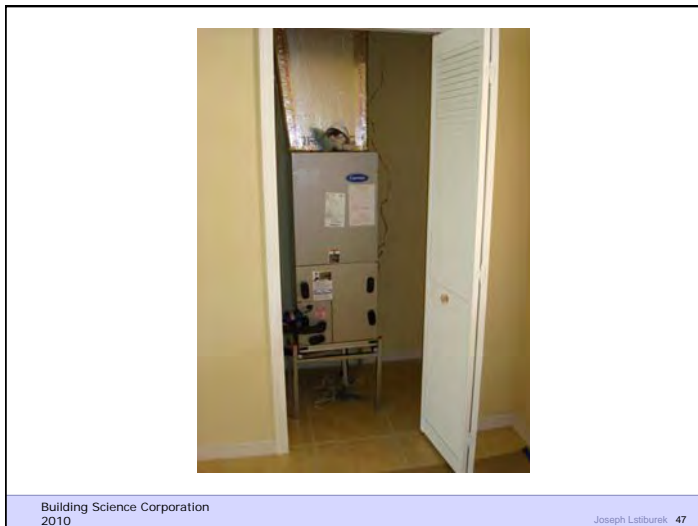
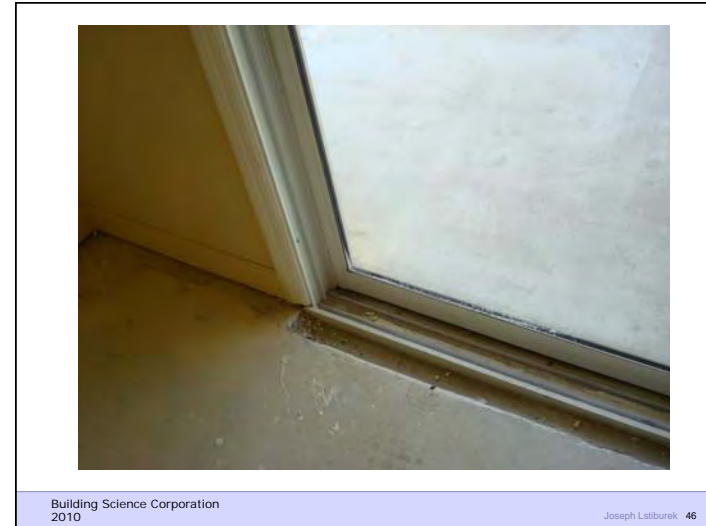


Building Science Corporation
2010

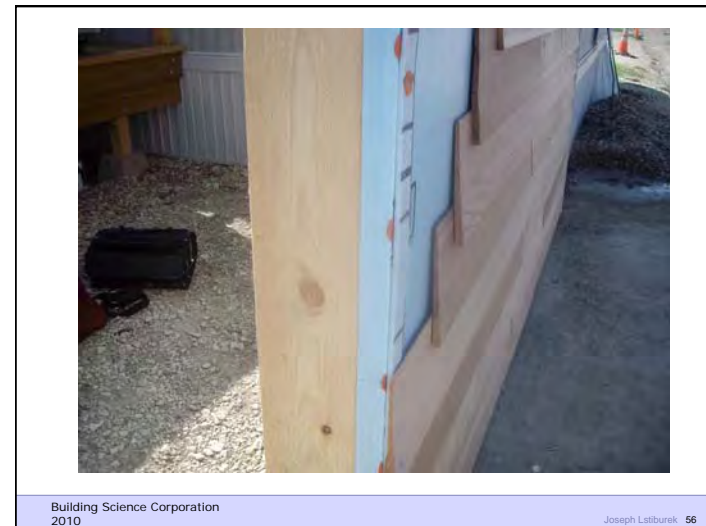
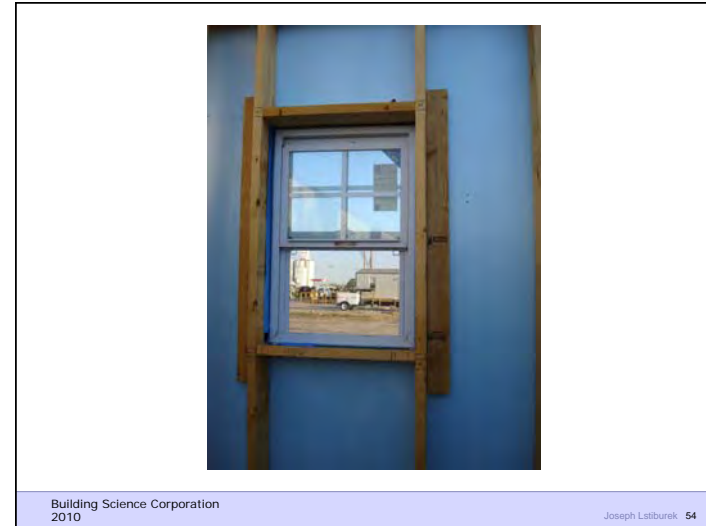
Joseph Lstiburek 36

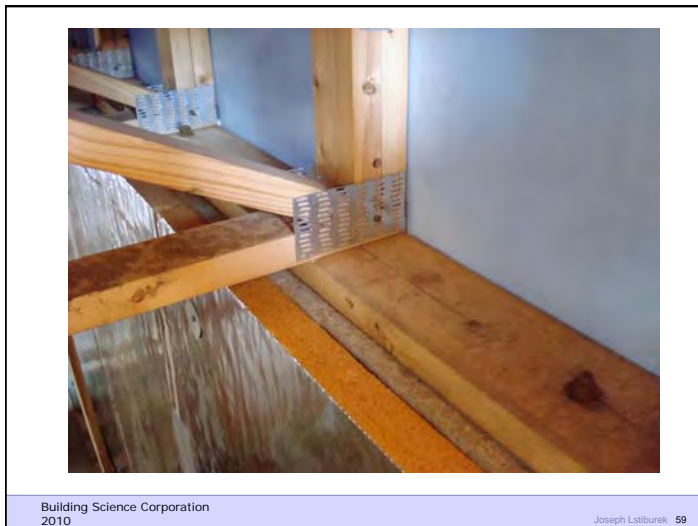
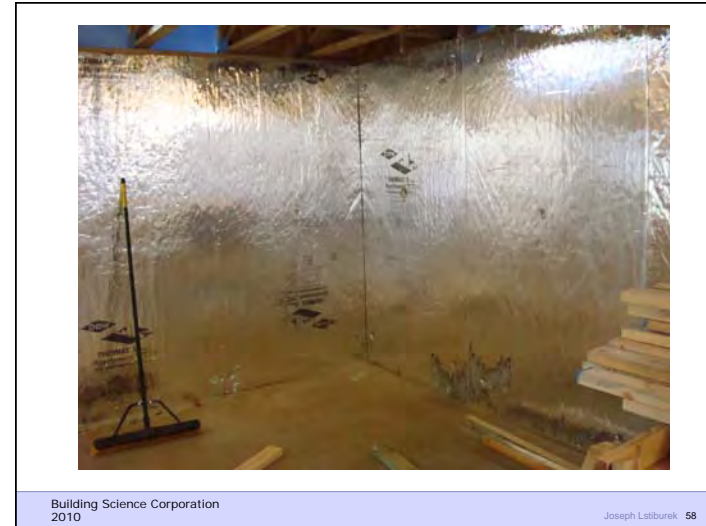
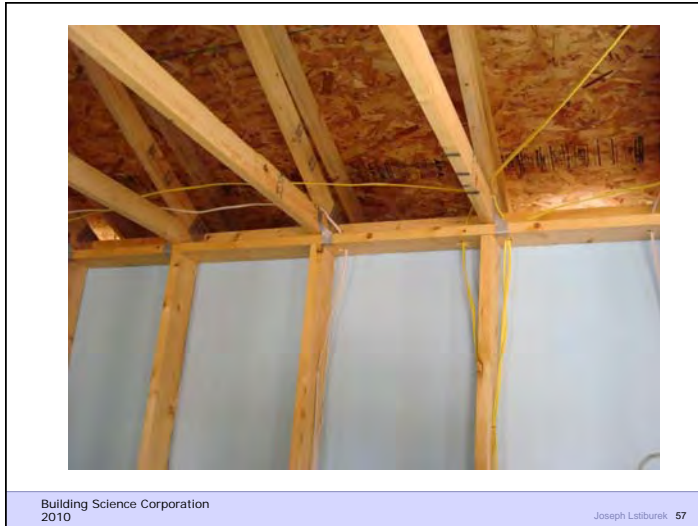




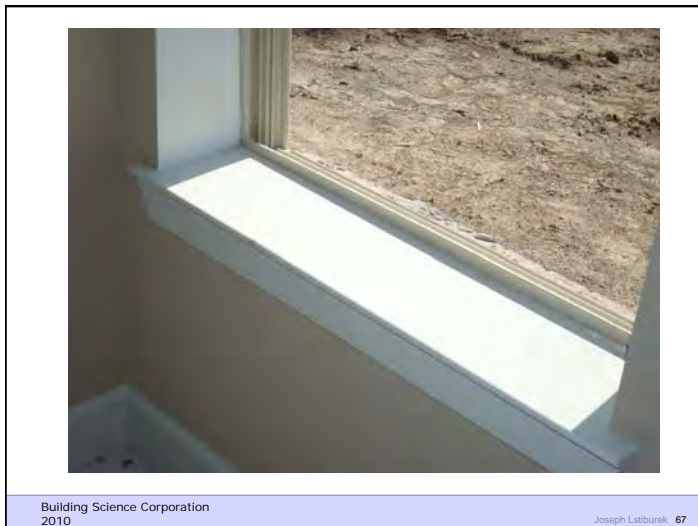














Building Science Corporation
2010

Joseph Lstiburek 69



Building Science Corporation
2010

Joseph Lstiburek 70



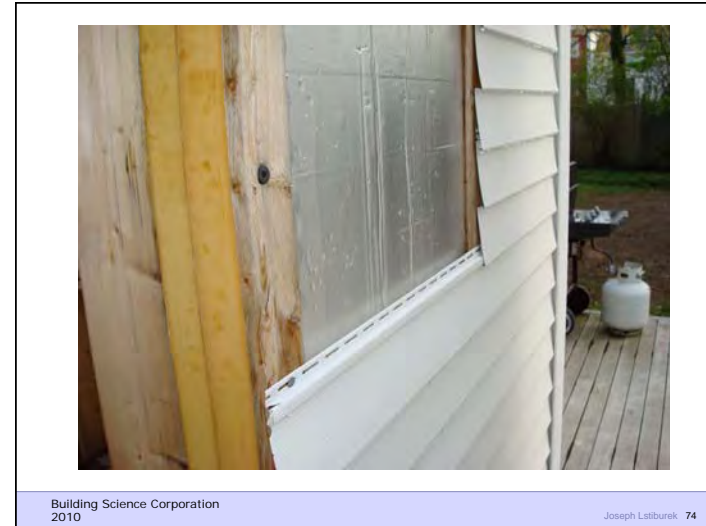
Building Science Corporation
2010

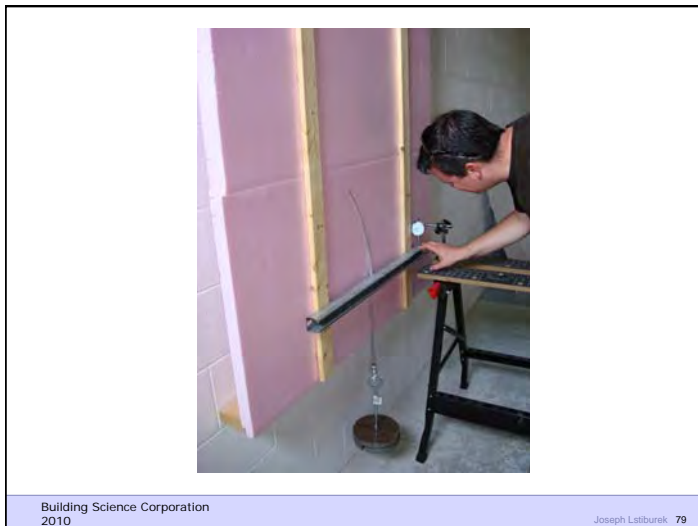
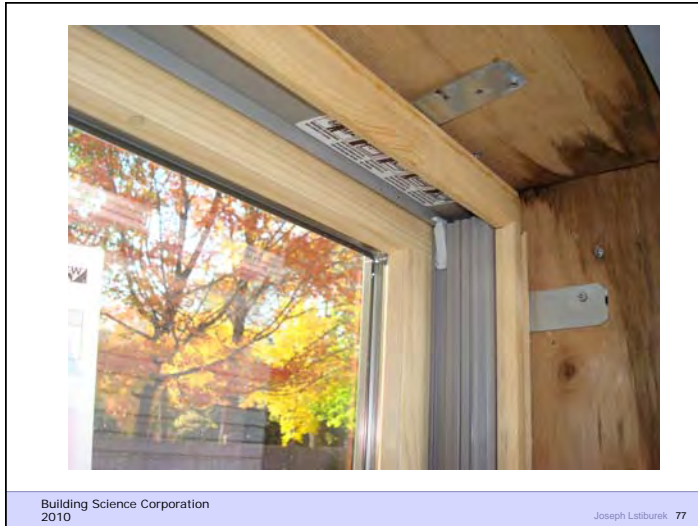
Joseph Lstiburek 71

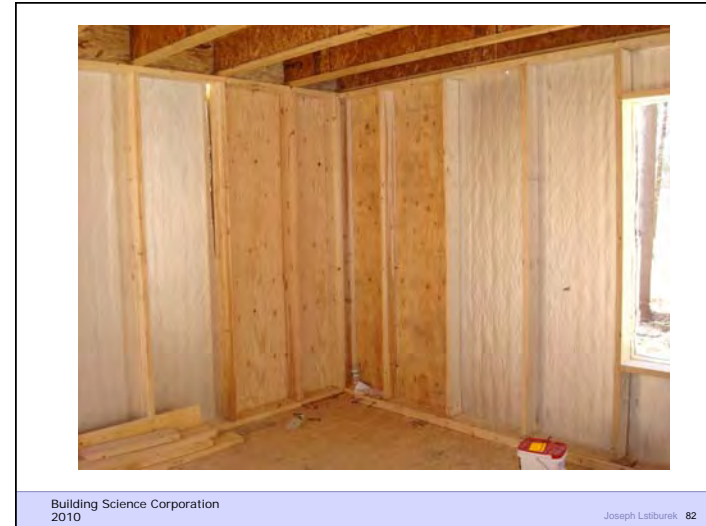


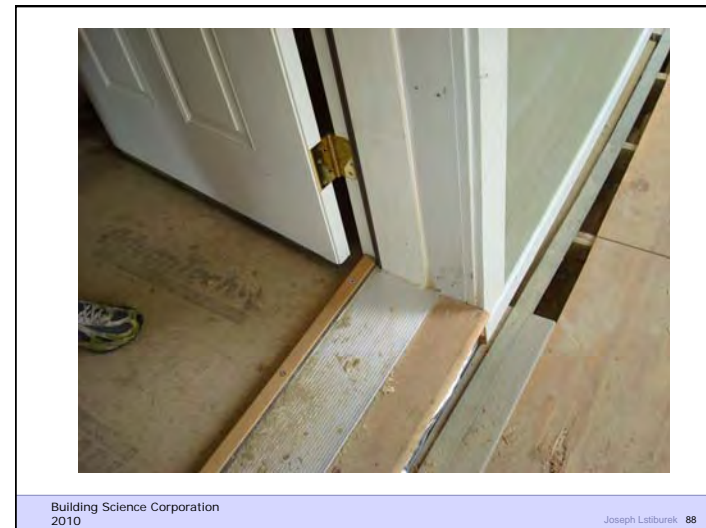
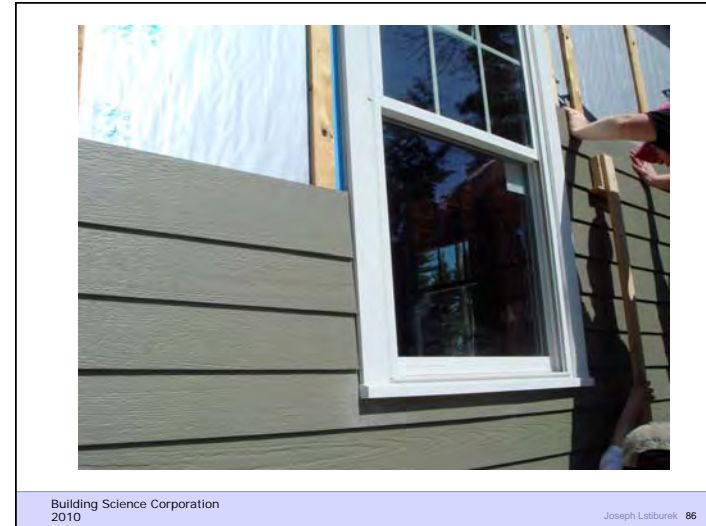
Building Science Corporation
2010

Joseph Lstiburek 72









CASE STUDY

- HOUSE SPECIFICATIONS
 - Conditioned Floor Area 2,495 sq ft
 - Total Floor Area 2,910 sq ft
 - Typical Wall Height 9'-11 1/2"
 - Total Conditioned Volume 24,850cu ft
 - Length of Exterior Wall 252 In ft
 - Length of Interior Wall 340 In ft

Building Science Corporation 2010 Joseph Lstiburek 89

CASE STUDY

- 2x4 16" oc WALL

	8' Studs	Bd Ft	Cost
- Ext Wall	467	1634 bd ft	\$ 866
- Ext Plate	95	331 bd ft	\$ 175
- Int Wall	715	2502 bd ft	\$1326
- Int Plate	126	446 bd ft	\$ 237
- Header		273 bd ft	\$ 145
- TOTAL WALL FRAME COST		\$2749	

Building Science Corporation 2010 Joseph Lstiburek 90

CASE STUDY

- 2x6 24" oc ADVANCED FRAME WALL

	8' Studs	Bd Ft	Cost
- Ext Wall	238	1312 bd ft	\$695
- Ext Plate	63	347 bd ft	\$183
- Int Wall	279	977 bd ft	\$518
- Int Plate	85	298 bd ft	\$158
- Header		148 bd ft	\$78
- TOTAL WALL FRAME COST		\$1632	

Building Science Corporation 2010 Joseph Lstiburek 91

CASE STUDY

- WOOD FRAME WALL SUMMARY

	2x4	2x6	REDUCED BY
- 8' Studs	1403	665	(-738 / -52%)
- Bd Ft	5186	3082	(-2104 / -40%)
- COST	\$2749	\$1632	(-\$1117 / -40%)


Building Science Corporation 2010 Joseph Lstiburek 92

Shear Panel



Building Science Corporation
2010


Joseph Lstiburek 93



Building Science Corporation
2010

Joseph Lstiburek 94

Shear Panel

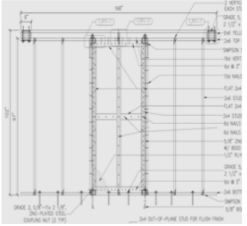



Building Science Corporation
2010

Joseph Lstiburek 95

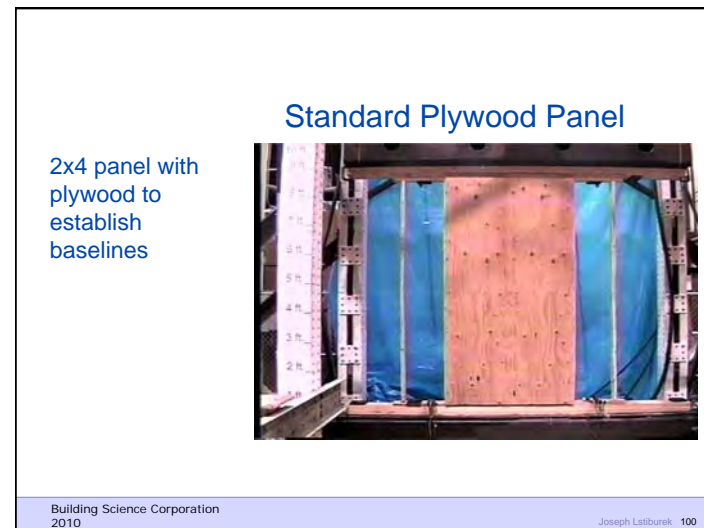
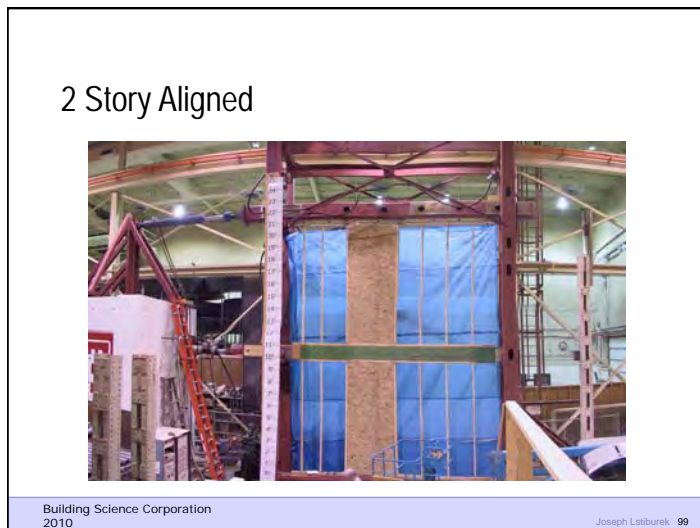
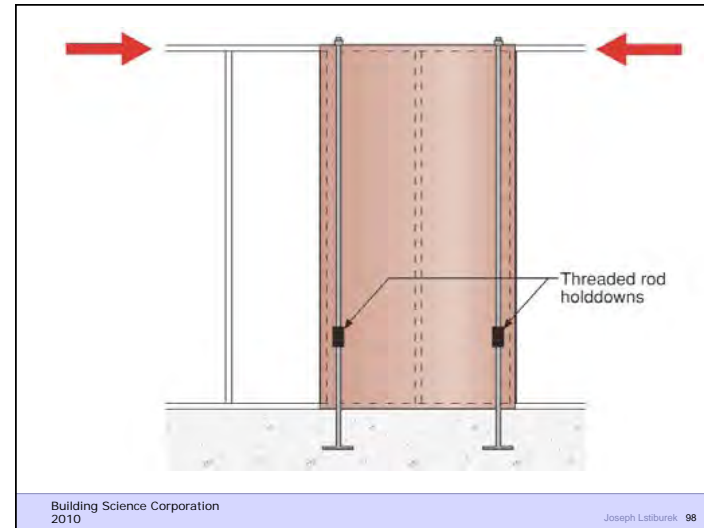
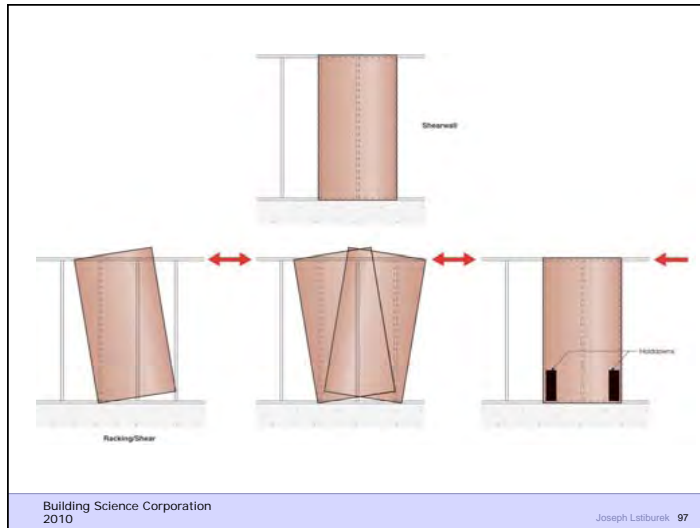
Seismic Testing

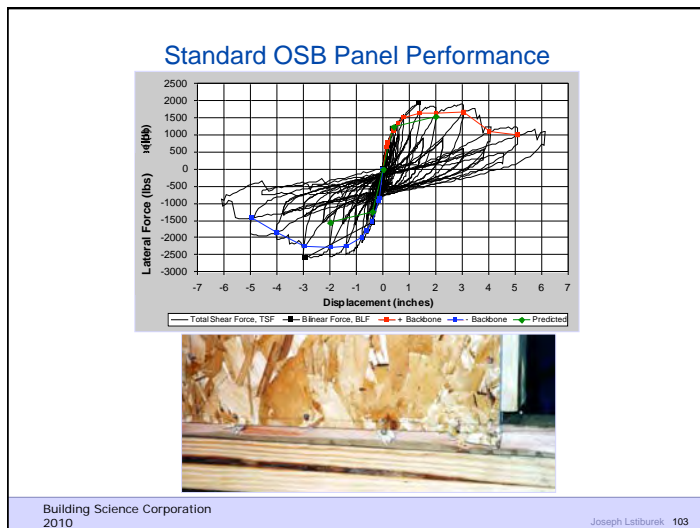
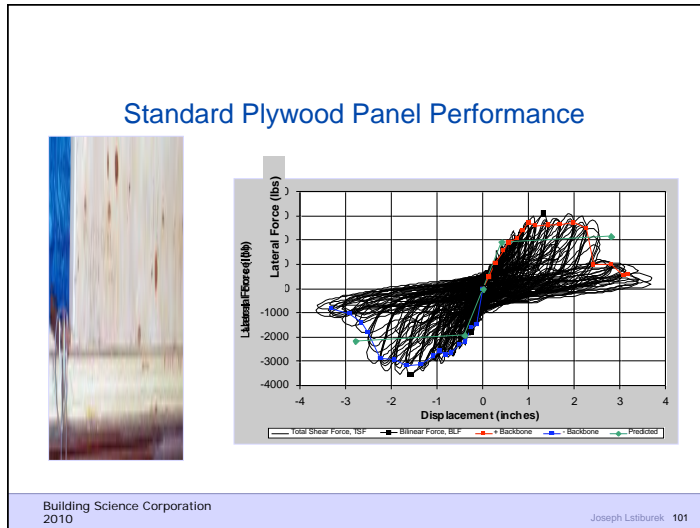
- Work with CERL (the US Army research laboratory), and BSC to facilitating code approval of advanced framing techniques by the Division of the State Architect in California, and other earthquake and high wind loading locations.
- Full scale assemblies have been tested under the new dynamic seismic loading protocols developed after the Northridge earthquake. New non-proprietary shear panels are now available for use that allow for advanced envelope design

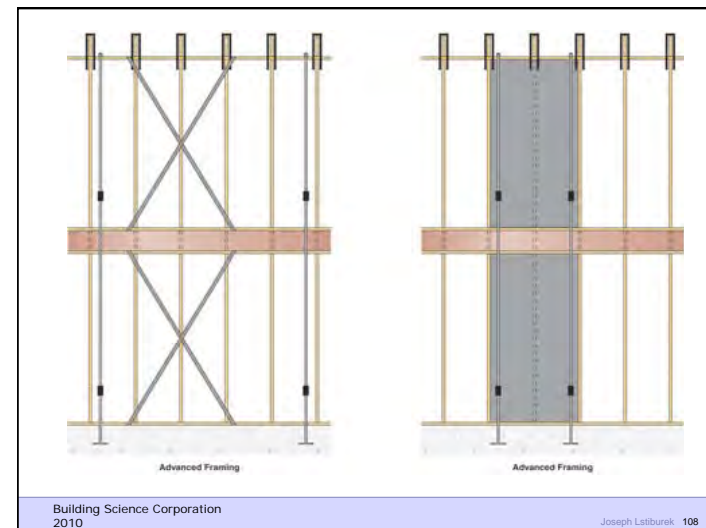
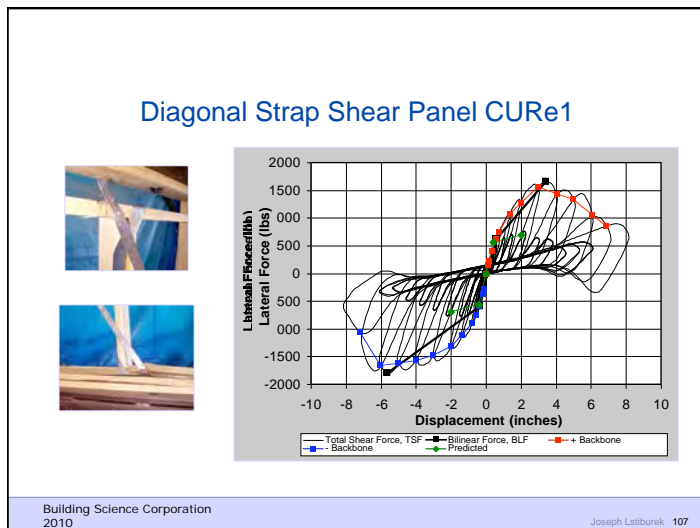



Building Science Corporation
2010

Joseph Lstiburek 96

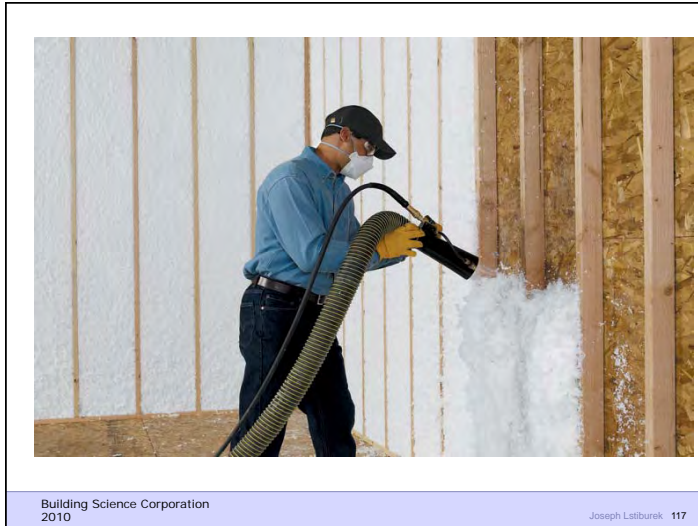


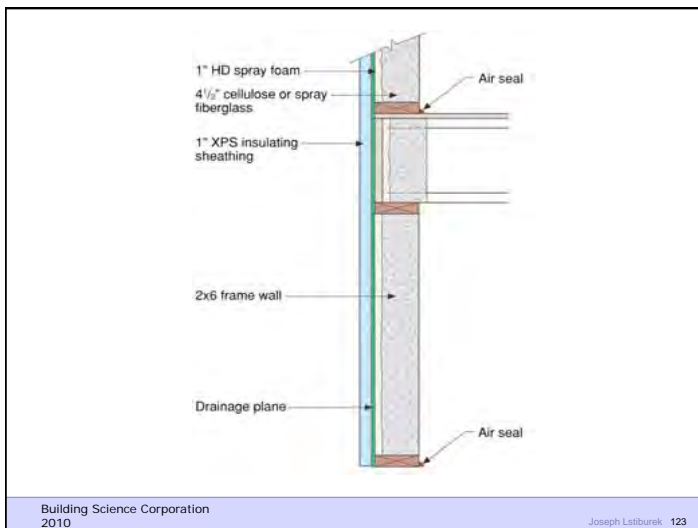
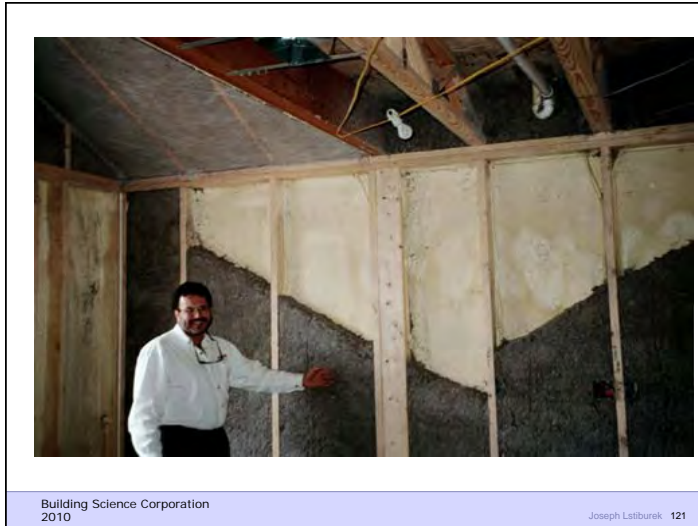






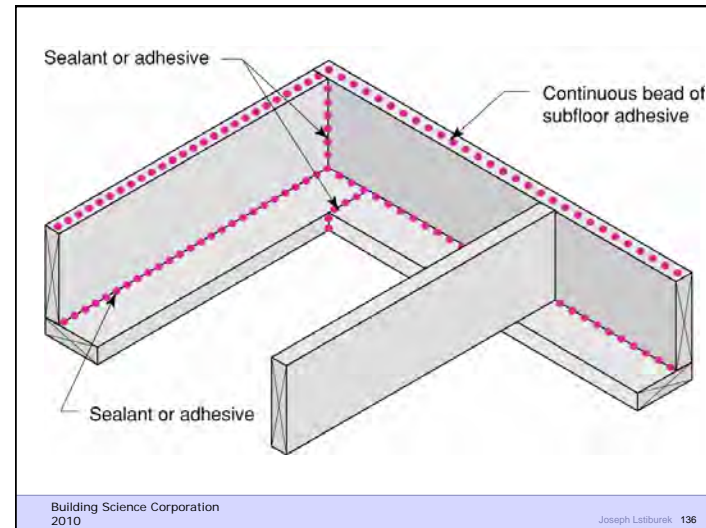
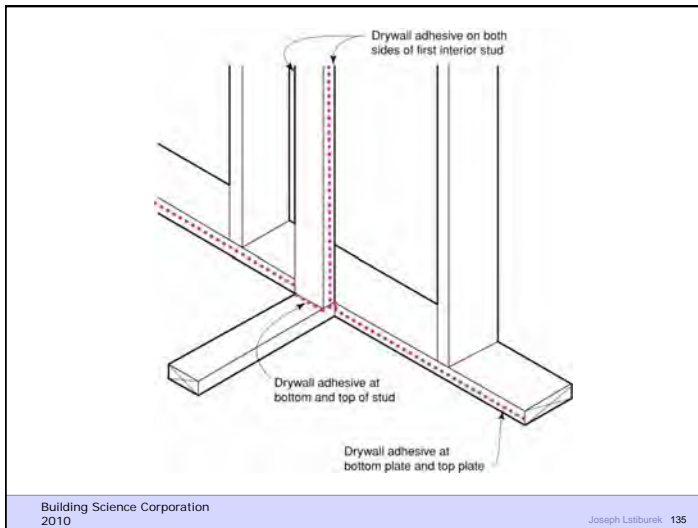
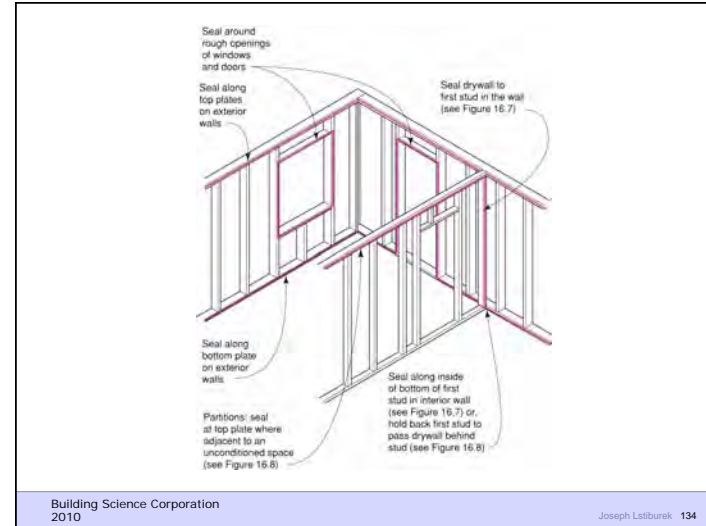
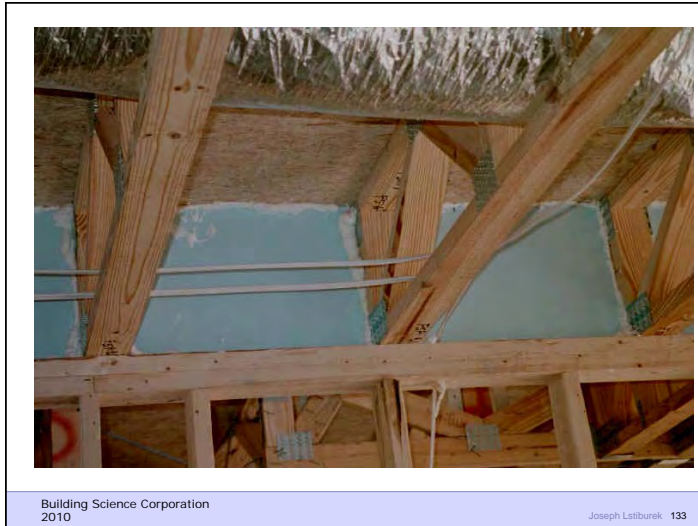


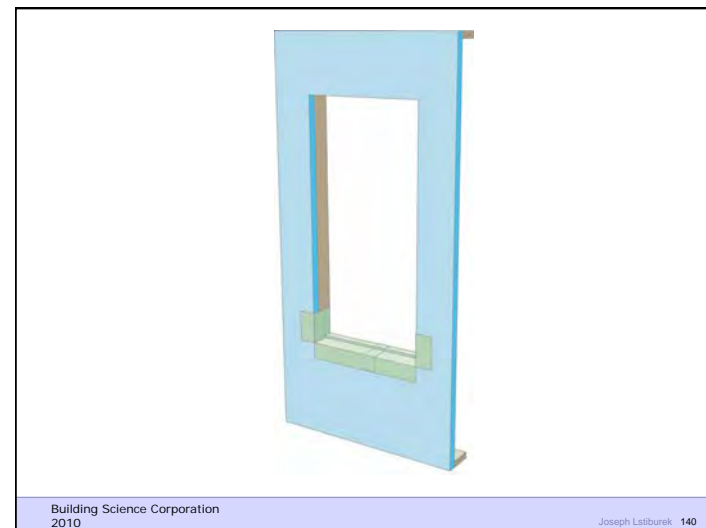
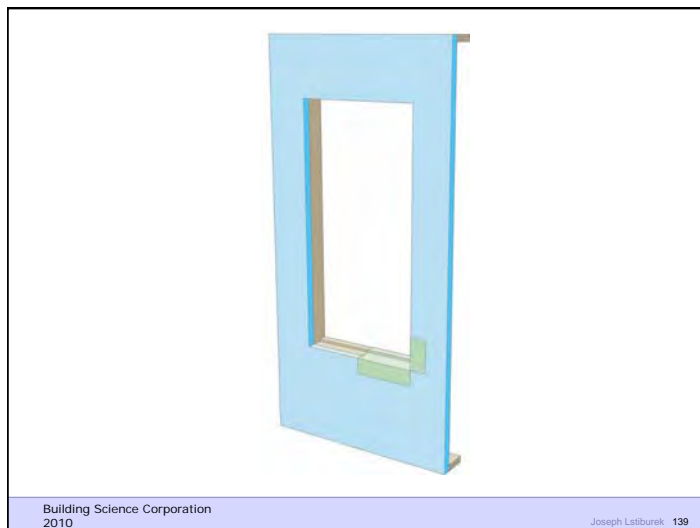
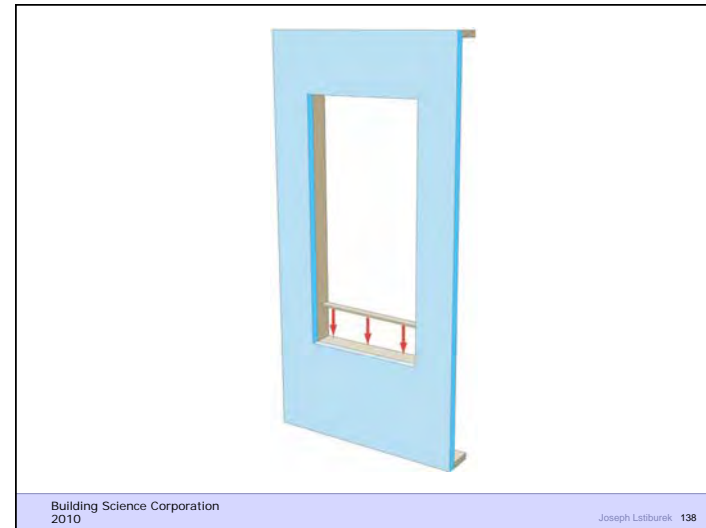
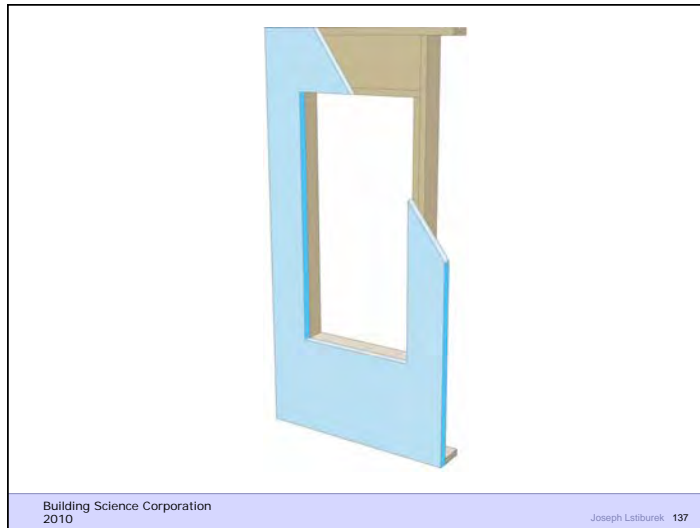


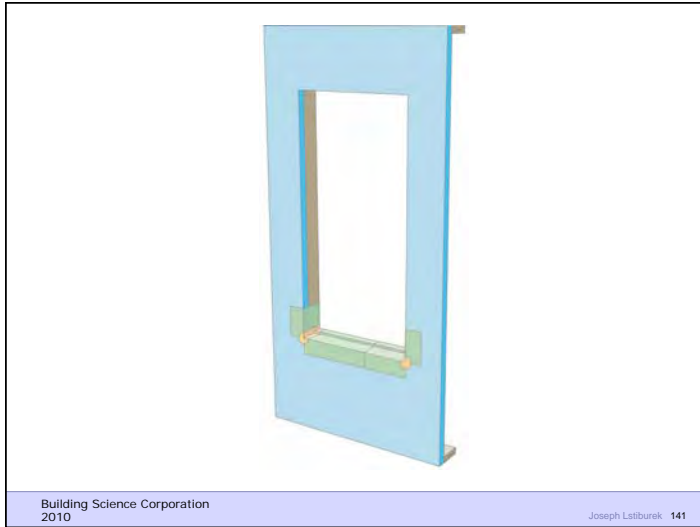


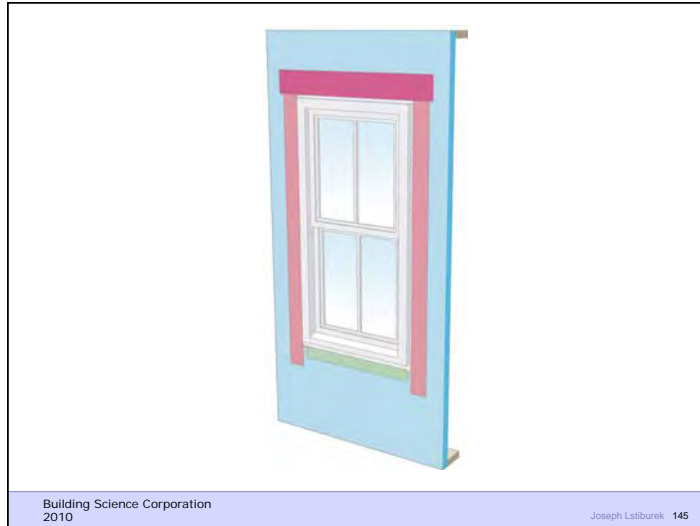






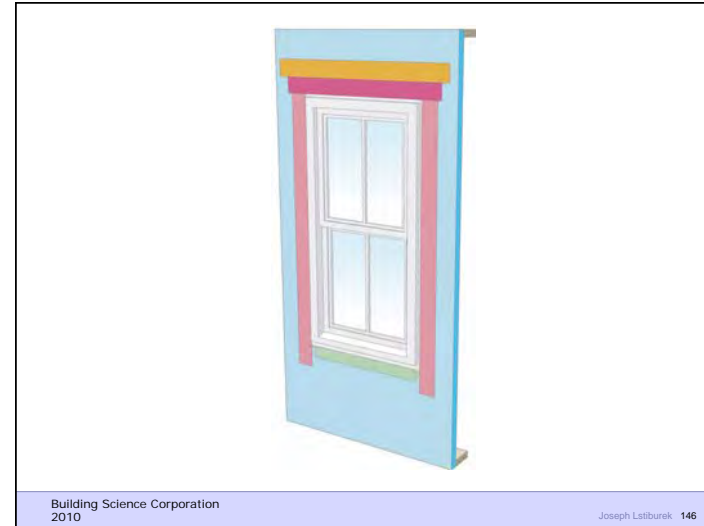






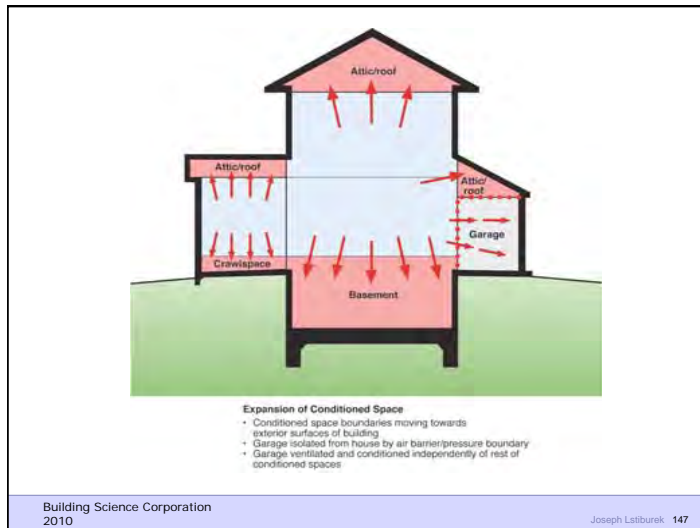
Building Science Corporation 2010

Joseph Lstiburek 145



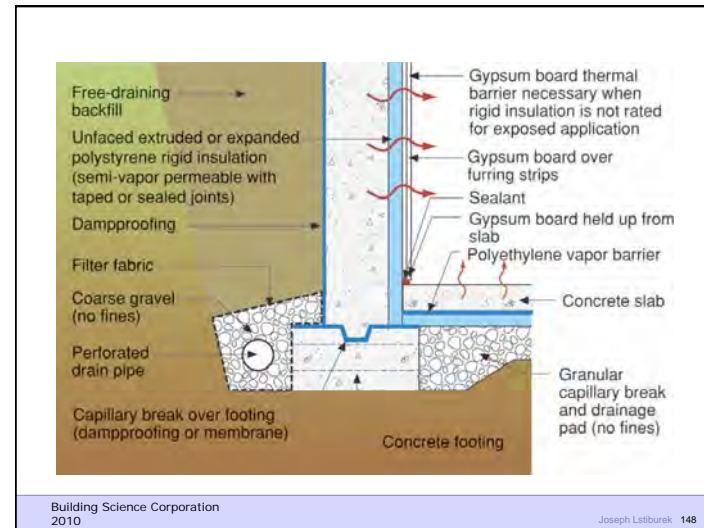
Building Science Corporation 2010

Joseph Lstiburek 146



Building Science Corporation 2010

Joseph Lstiburek 147



Building Science Corporation 2010

Joseph Lstiburek 148

