

Joseph Lstiburek, Ph.D., P.Eng, ASHRAE Fellow

Building Science

Crawlspaces in Coastal Climates

Crawl Spaces

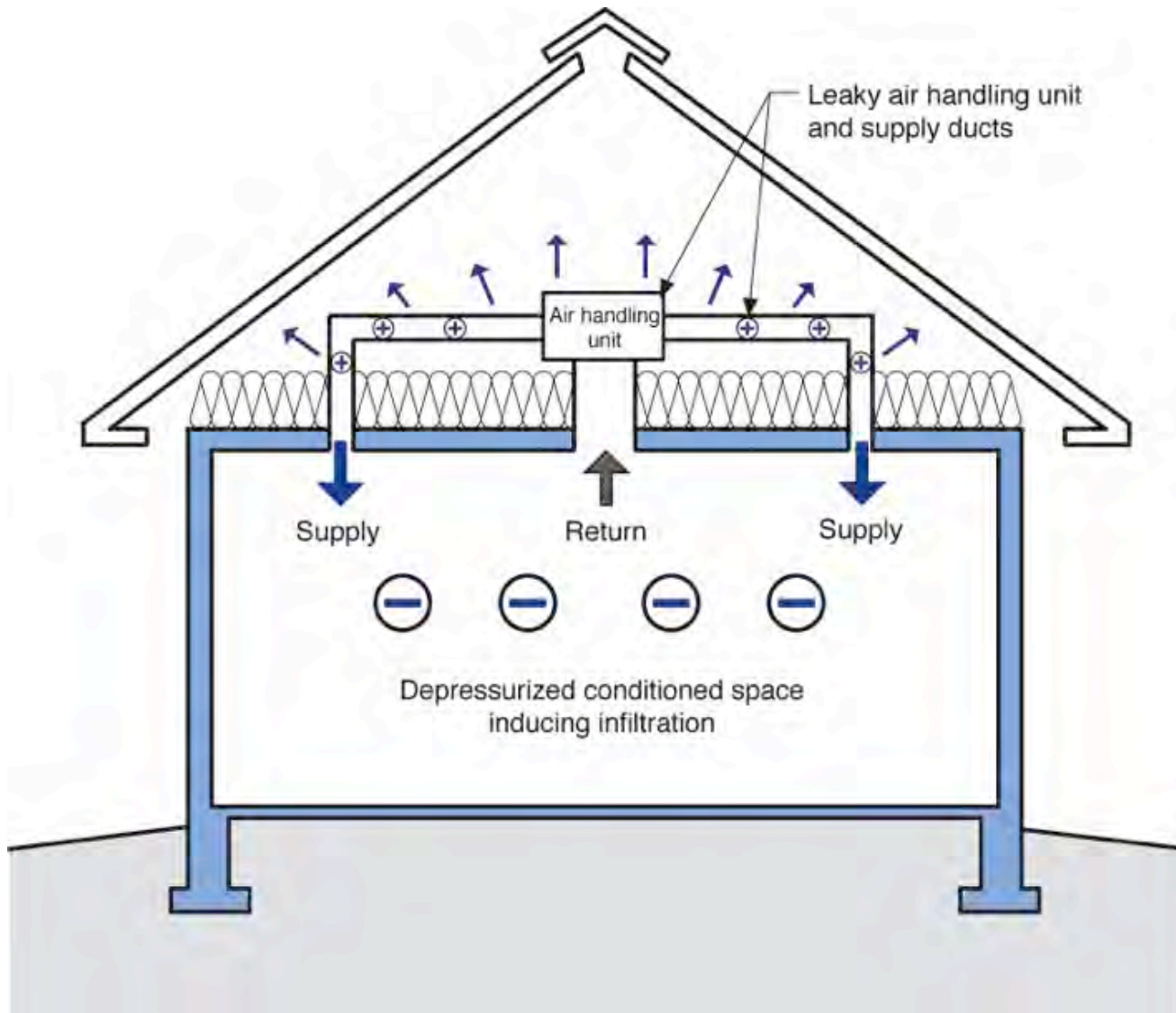
Crawl spaces must be completely connected to either the outside or the inside

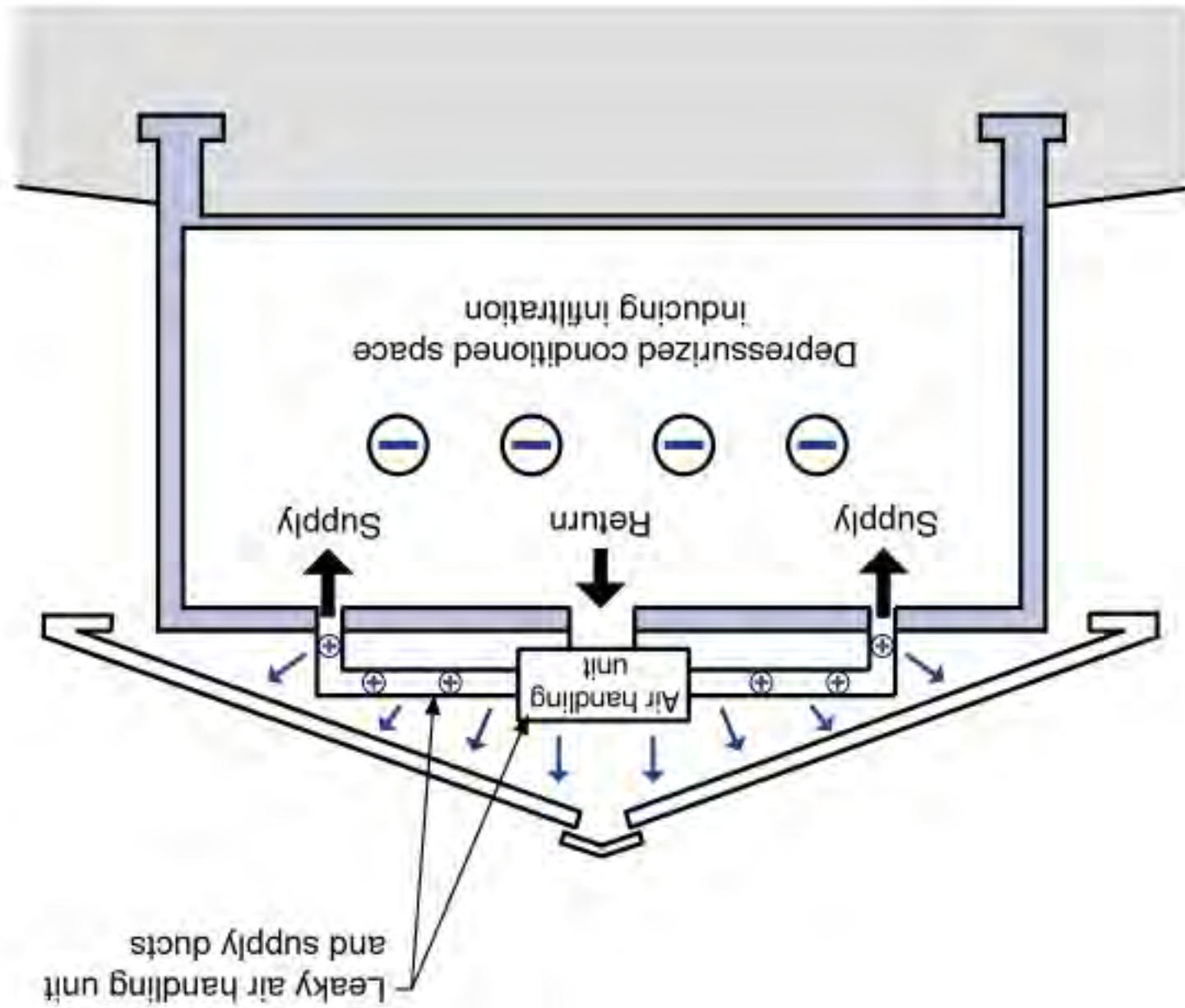
Crawl spaces must be completely connected to either the outside or the inside

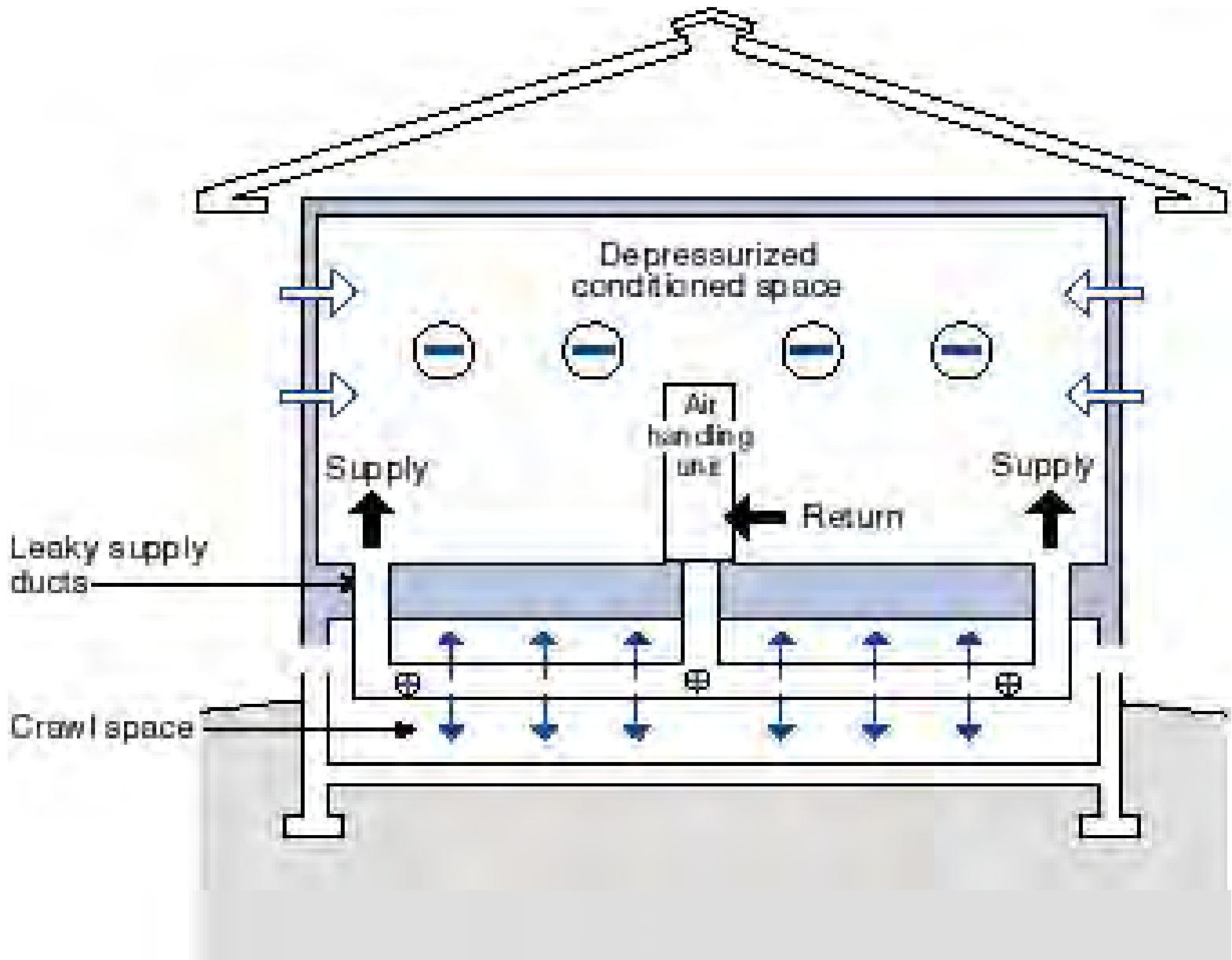
Vented crawl spaces work

Unvented conditioned crawl spaces work

Don't Do Stupid Things







Smart Thing











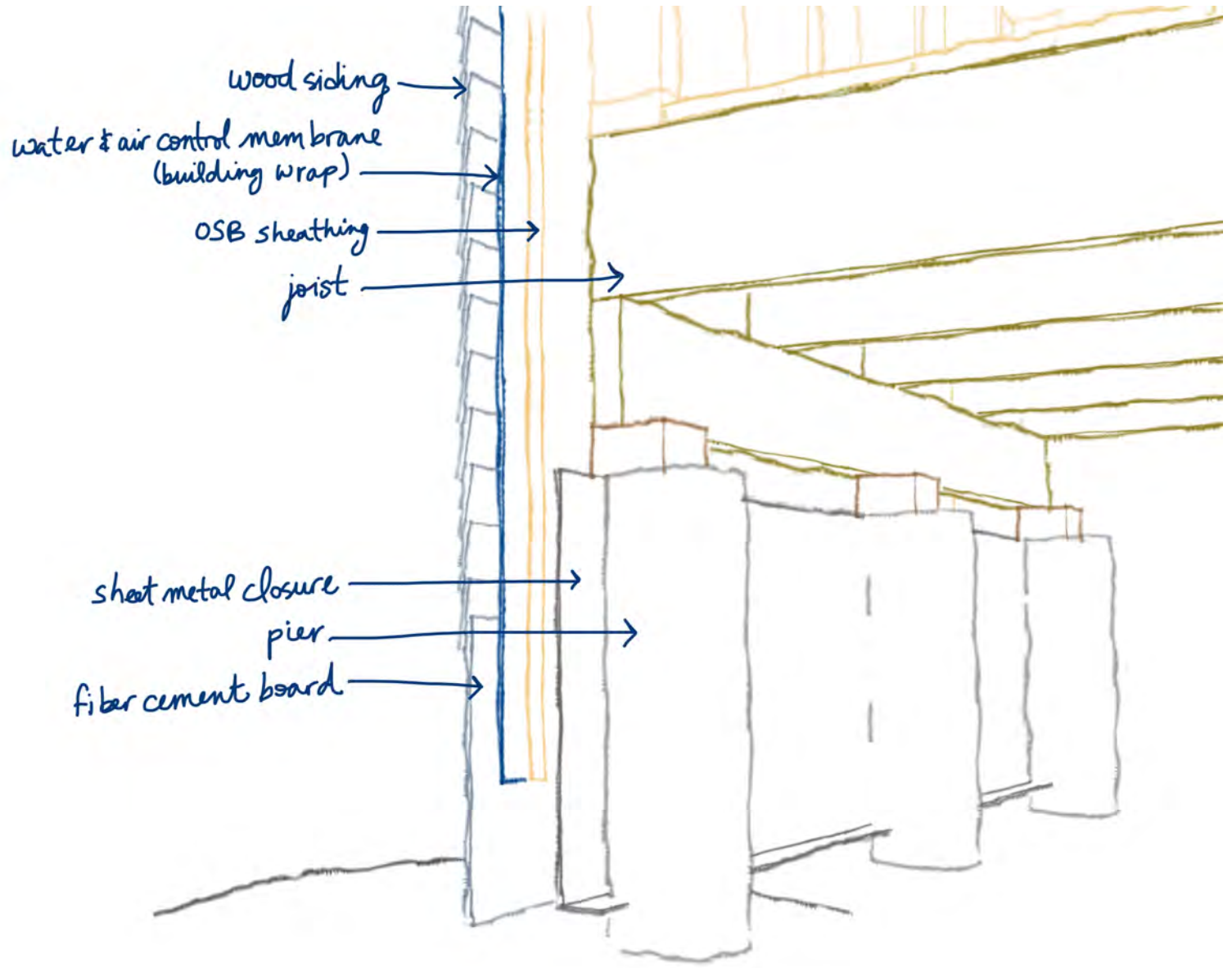


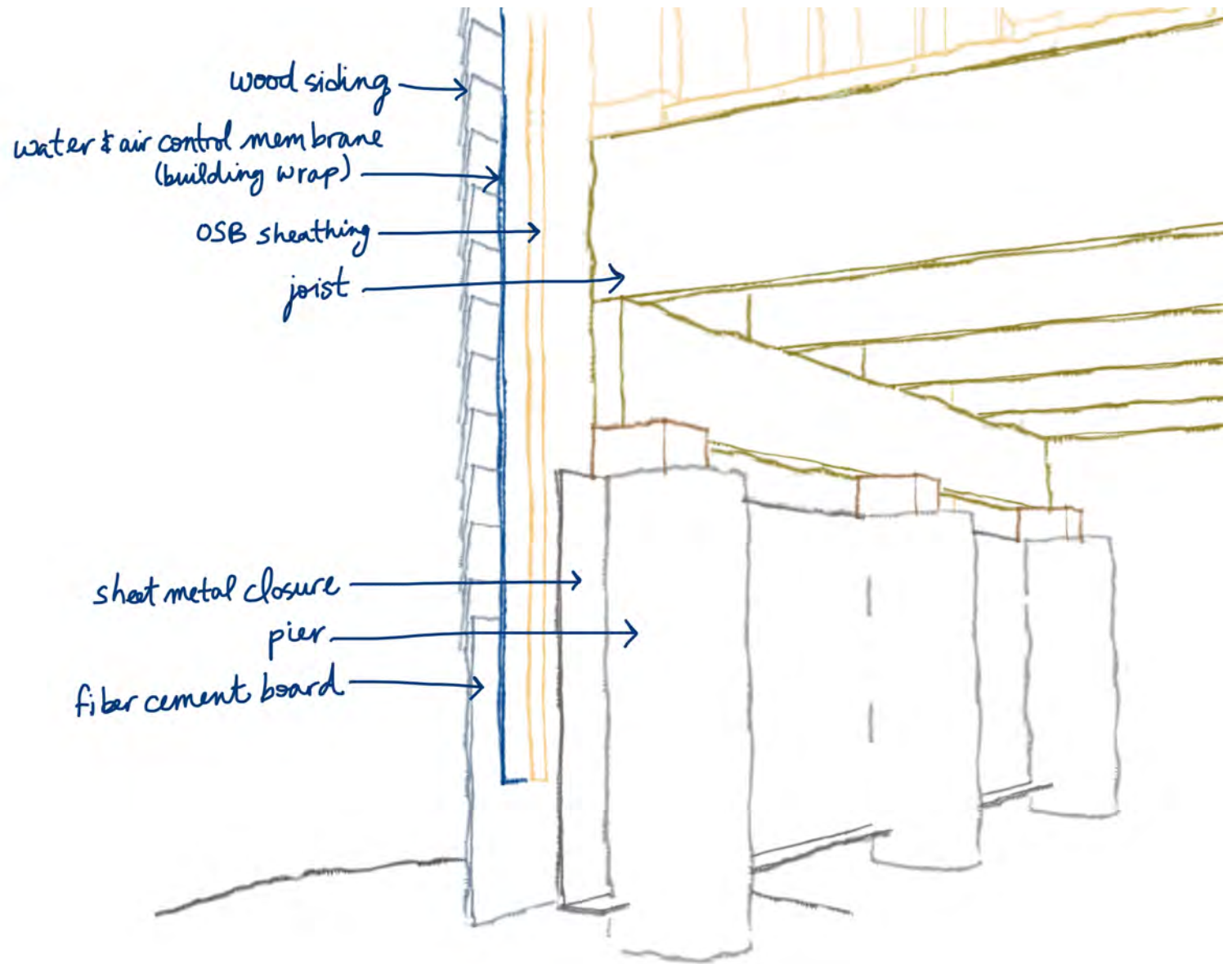


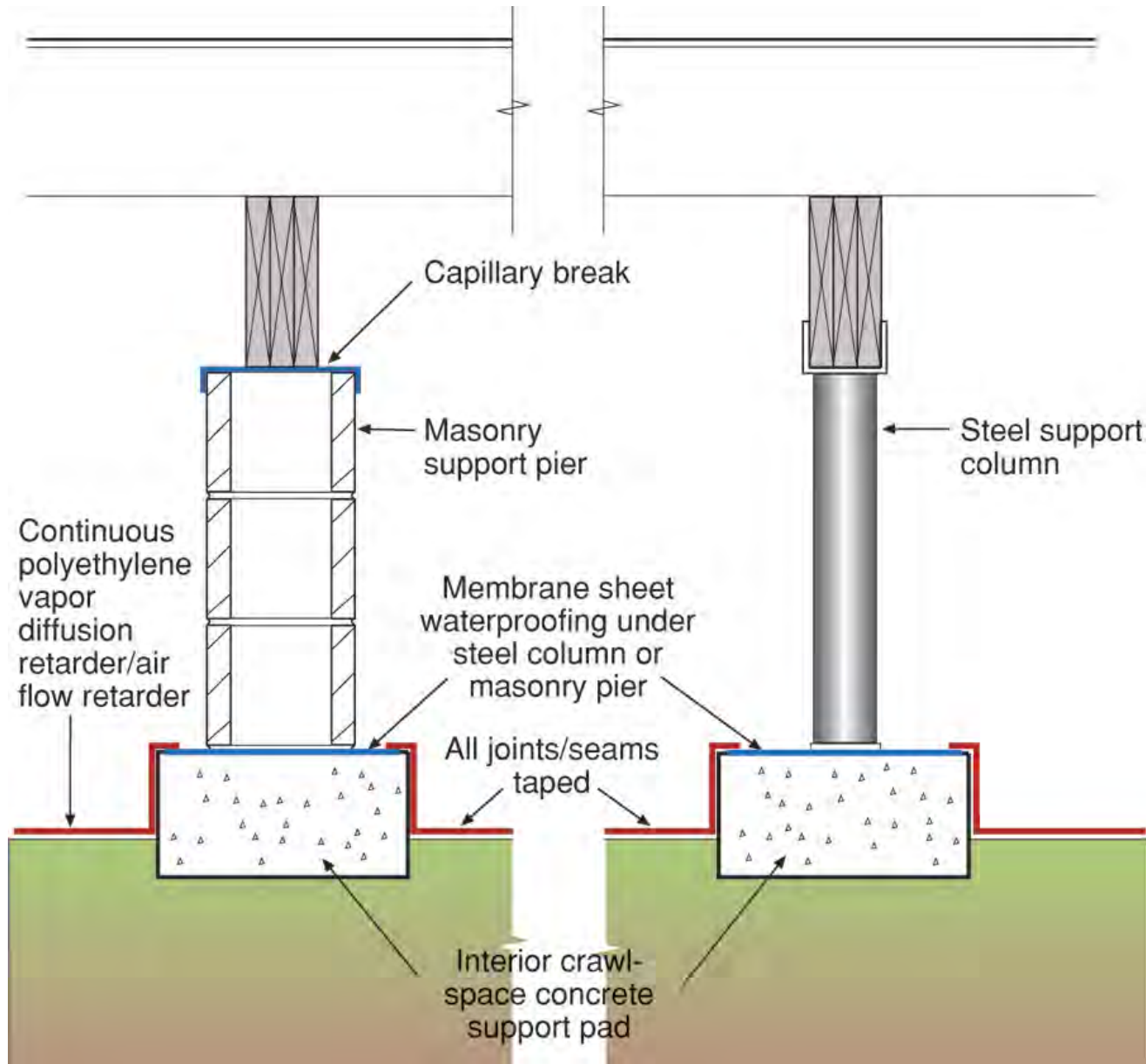












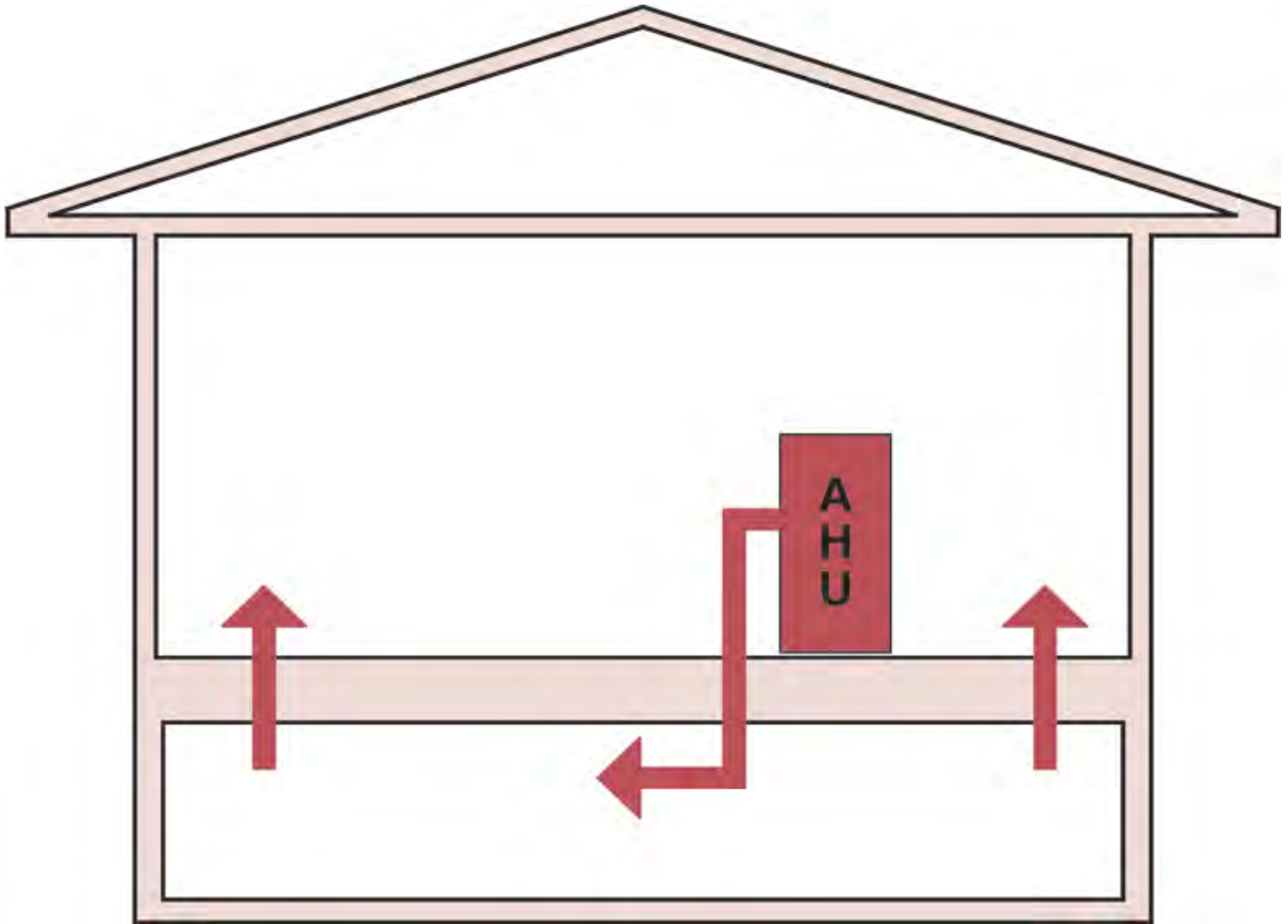
Conditioned Crawlspace Not Unvented
Crawlspace

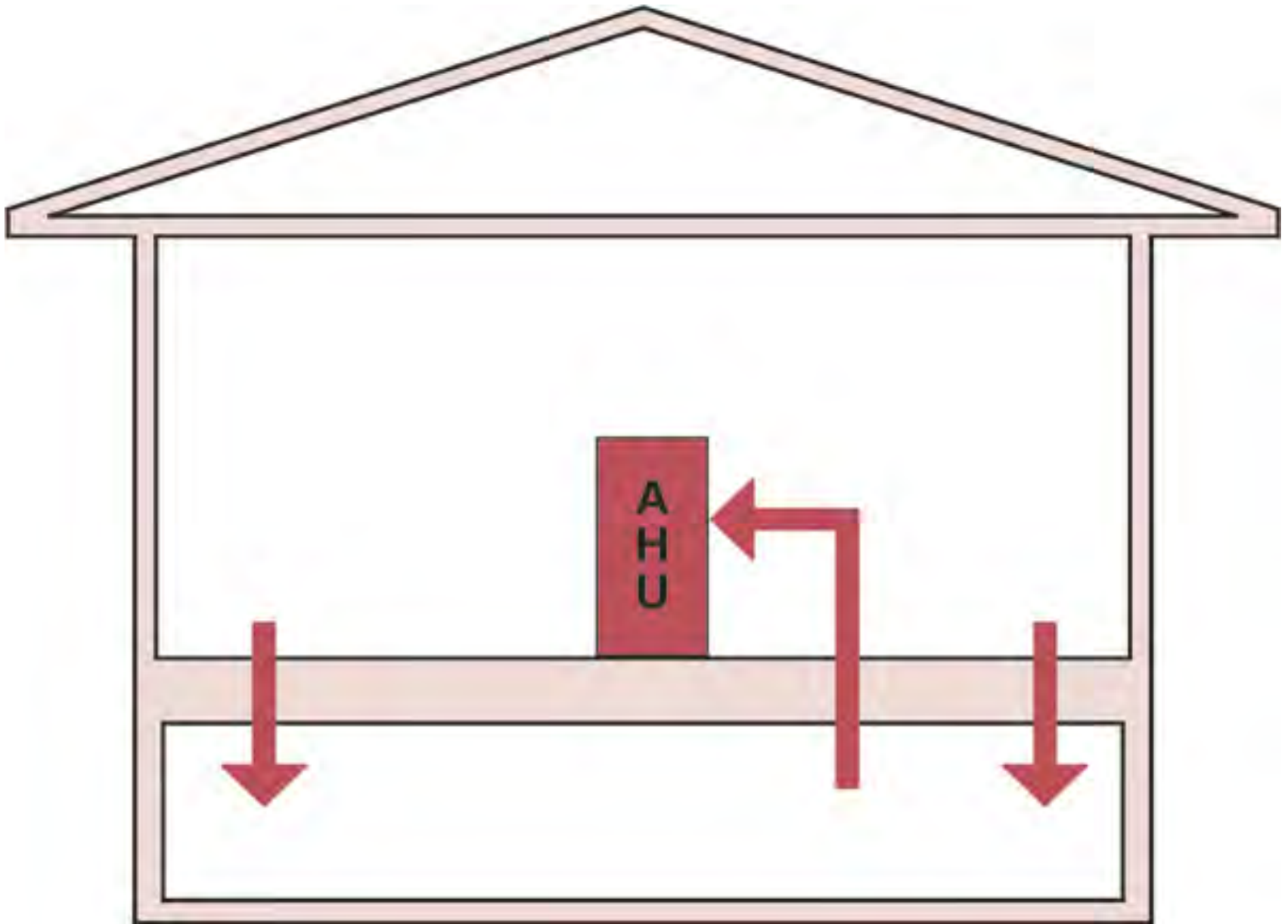
Need Supply Air

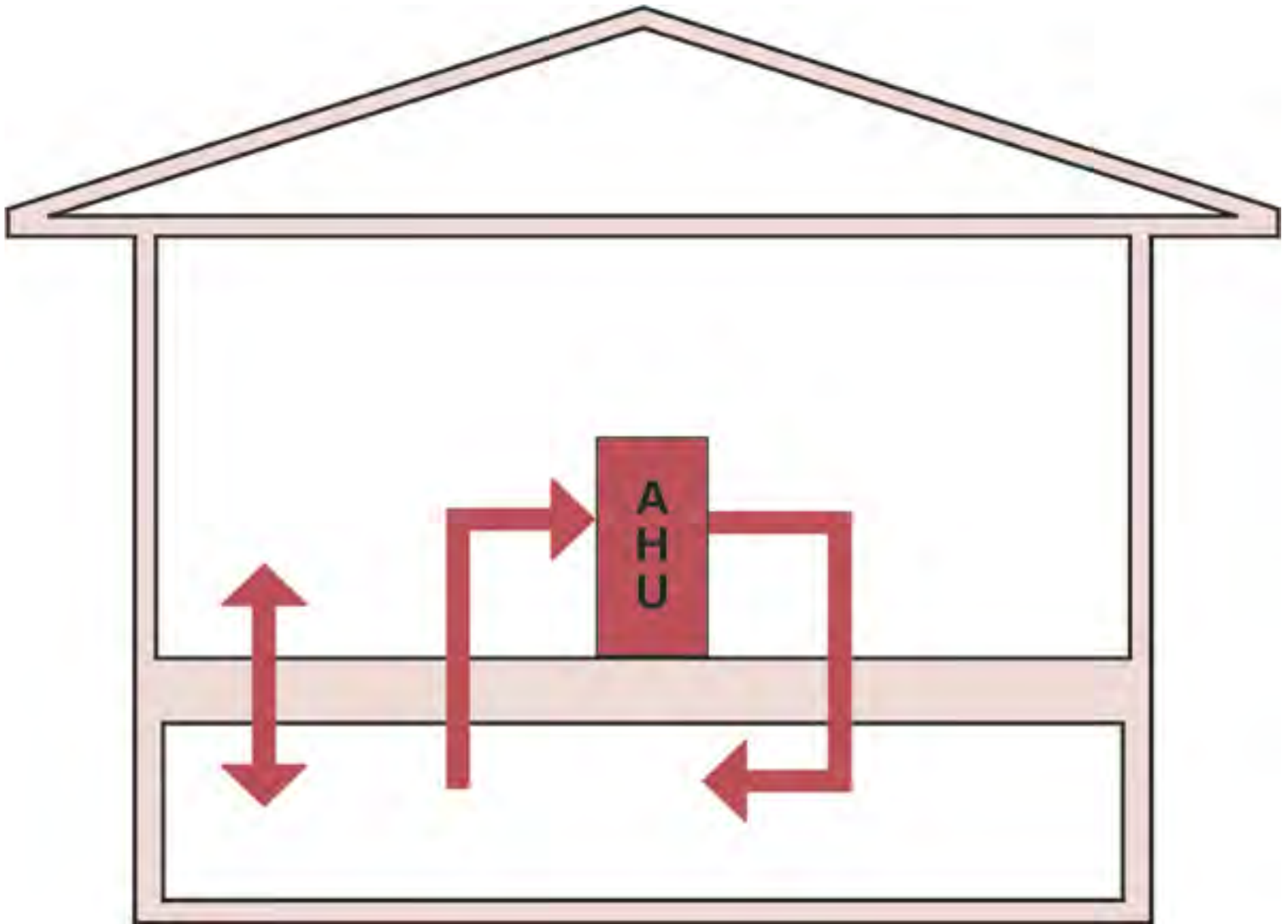
50 cfm/1000 ft² of Crawlspace Area

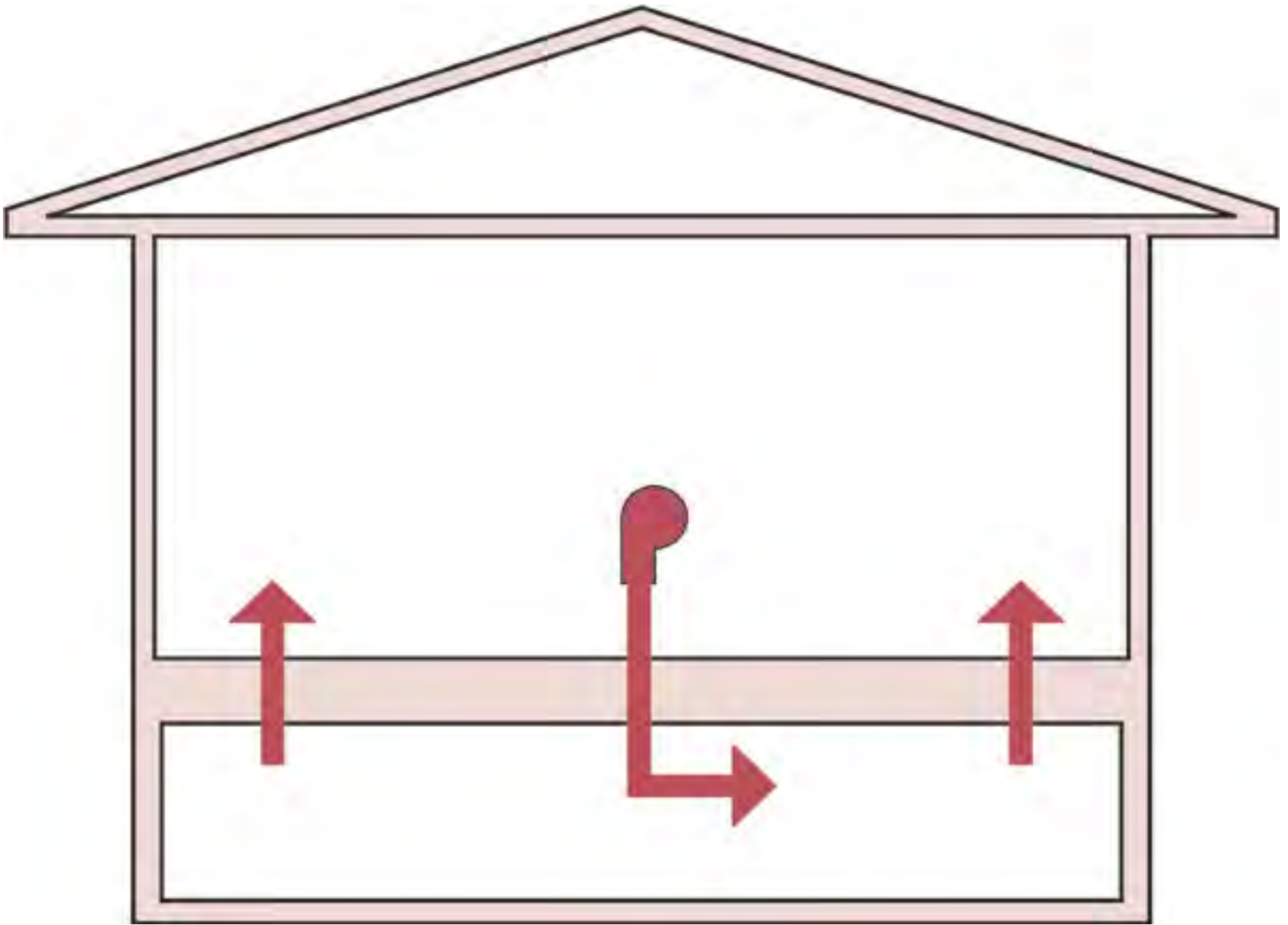
Or

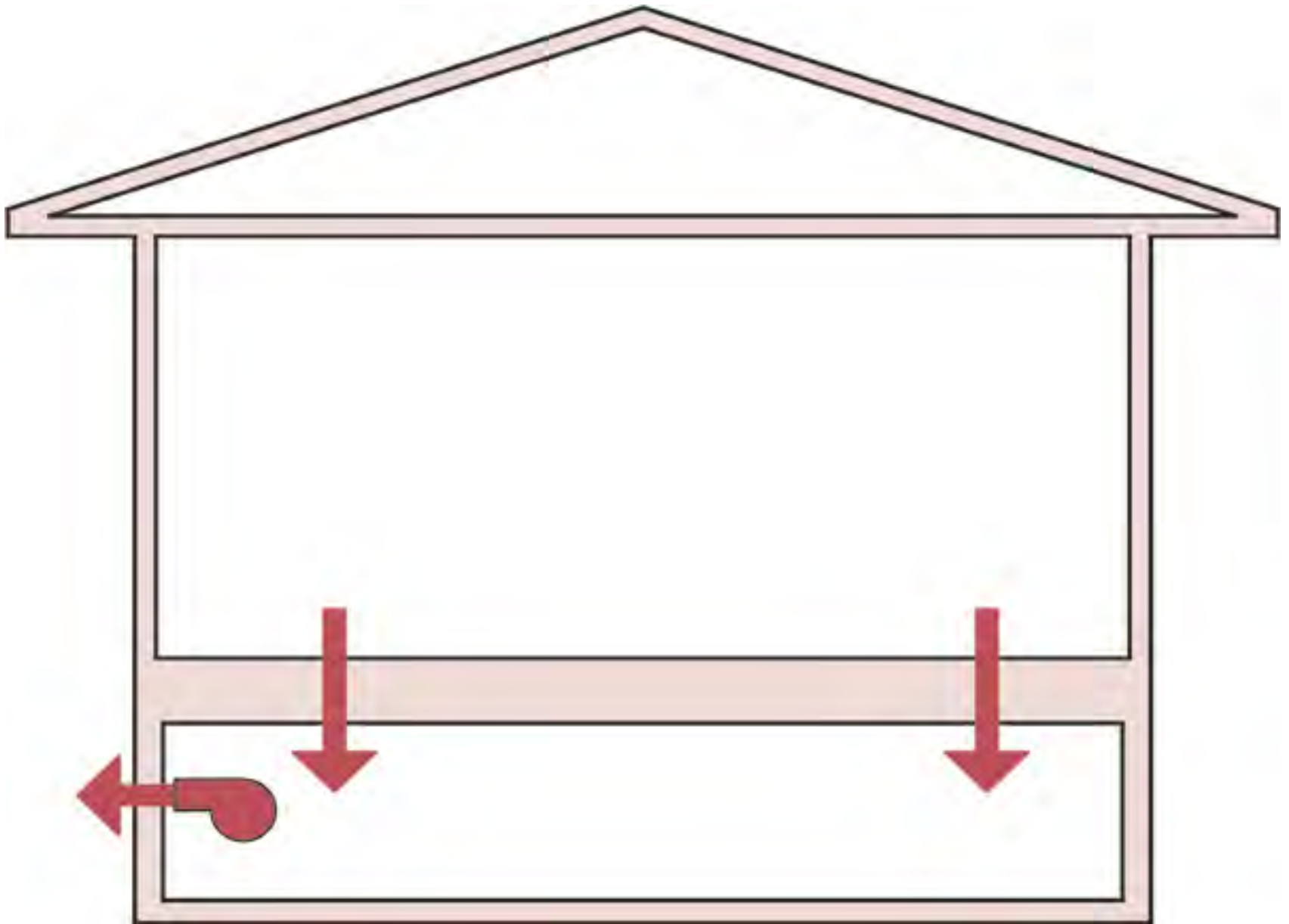
Dehumidification

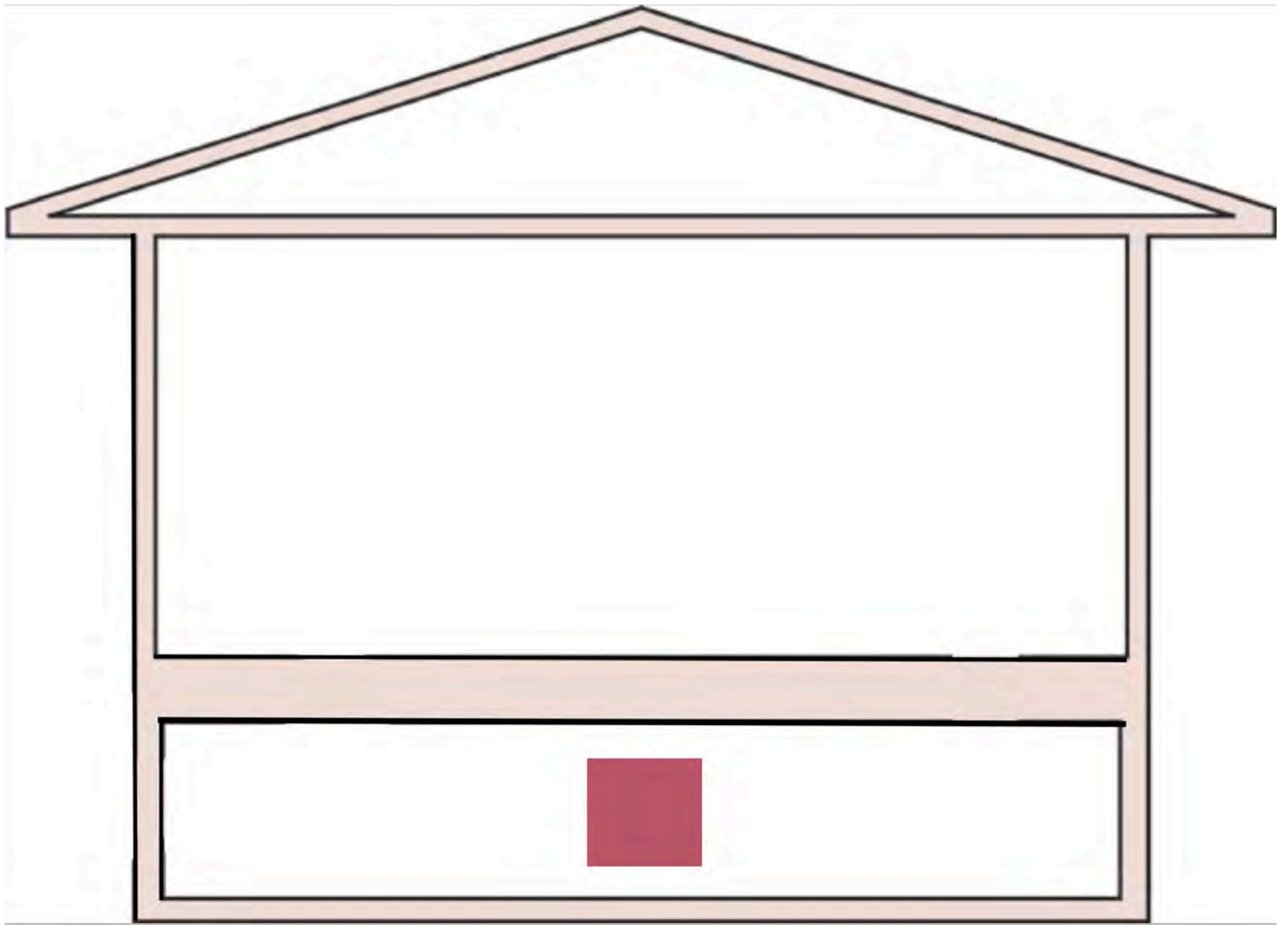


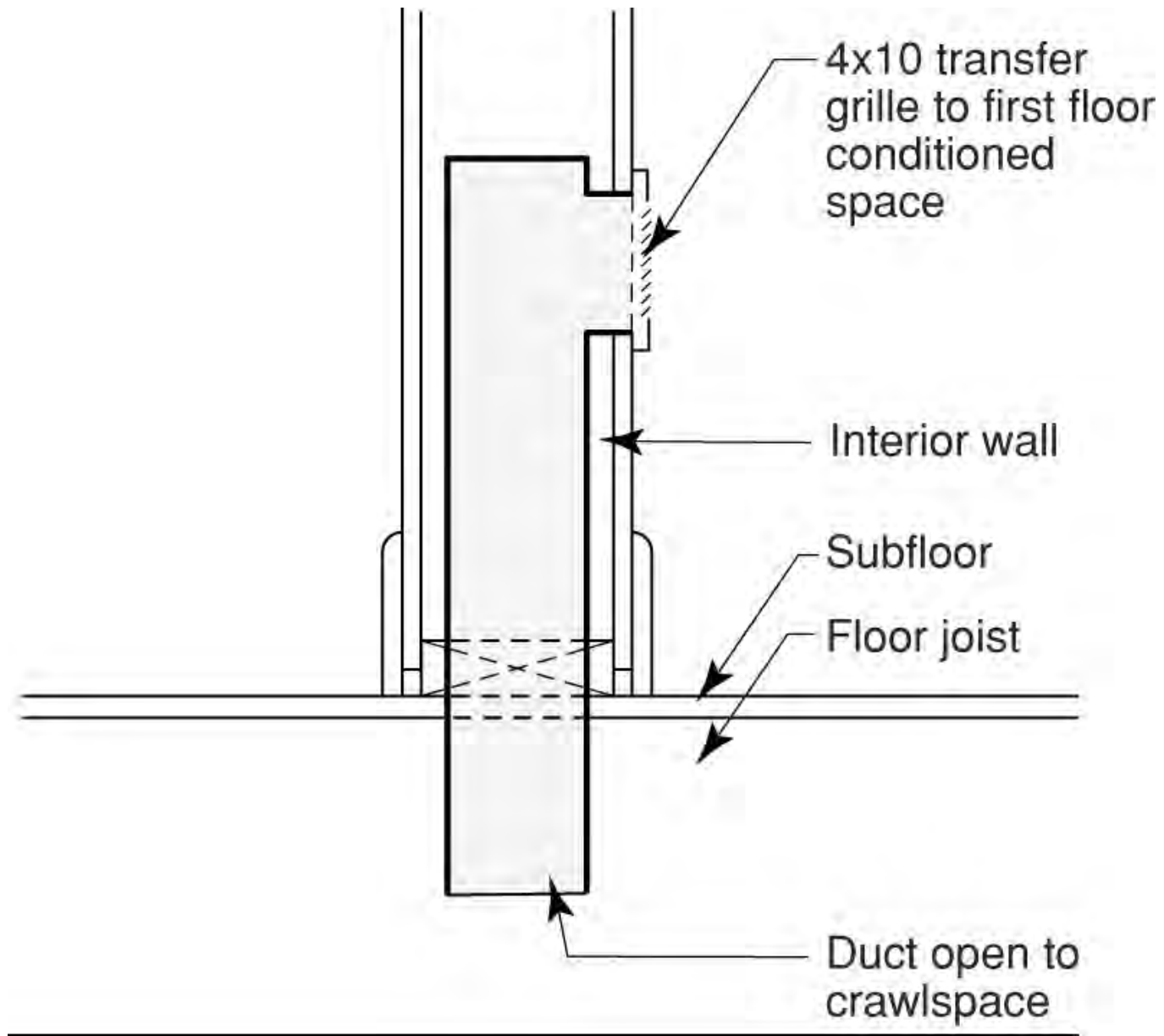




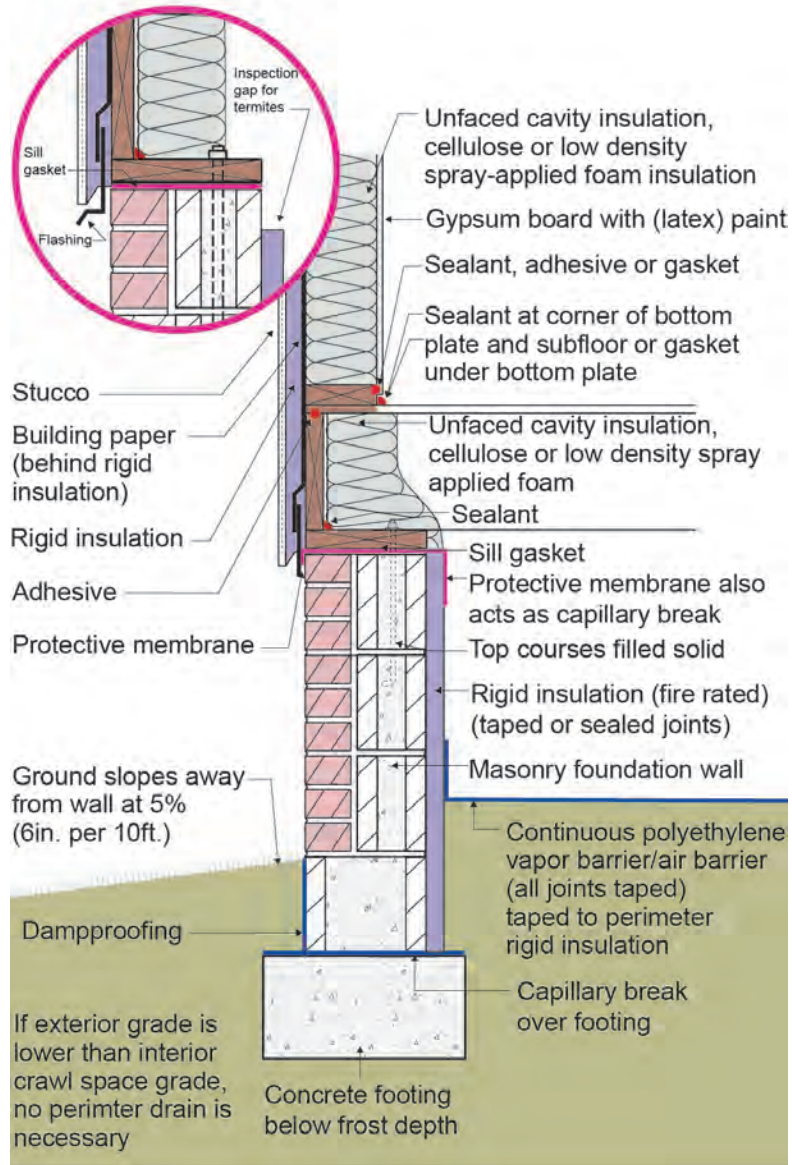








Alternative Detail





Smart Thing

