

Joseph Lstiburek, Ph.D., P.Eng, ASHRAE Fellow

Building Science

There's No Such Thing As A Free
Thermodynamic Lunch

Energy Flow















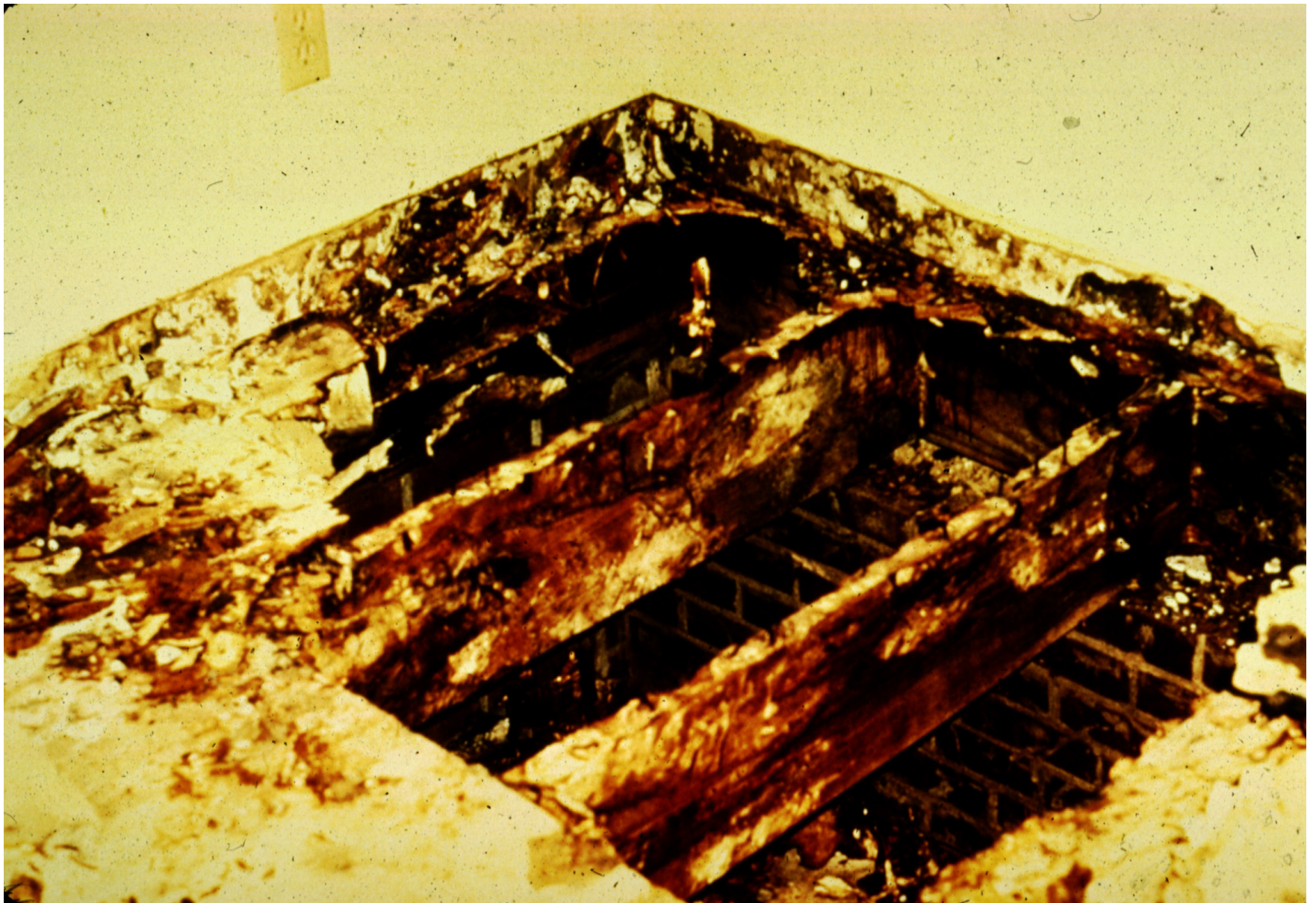


















Some Physics....

Arrhenius Equation

For Every 10 Degree K Rise
Reaction Rate Doubles

$$k = Ae^{-E_a/(RT)}$$

Damage Functions

Water

Heat

Ultra-violet Radiation

2nd Law of Thermodynamics

Heat Flow Is From Warm To Cold
Moisture Flow Is From Warm To Cold
Moisture Flow Is From More To Less
Air Flow Is From A Higher Pressure to a
Lower Pressure
Gravity Acts Down

Moisture Flow Is From Warm To Cold
Moisture Flow Is From More To Less

Moisture Flow Is From Warm To Cold
Moisture Flow Is From More To Less

Thermal Gradient – Thermal Diffusion
Concentration Gradient – Molecular Diffusion

Moisture Flow Is From Warm To Cold

Moisture Flow Is From More To Less

Thermal Gradient – Thermal Diffusion

Concentration Gradient – Molecular Diffusion

Vapor Diffusion

Thermodynamic Potential



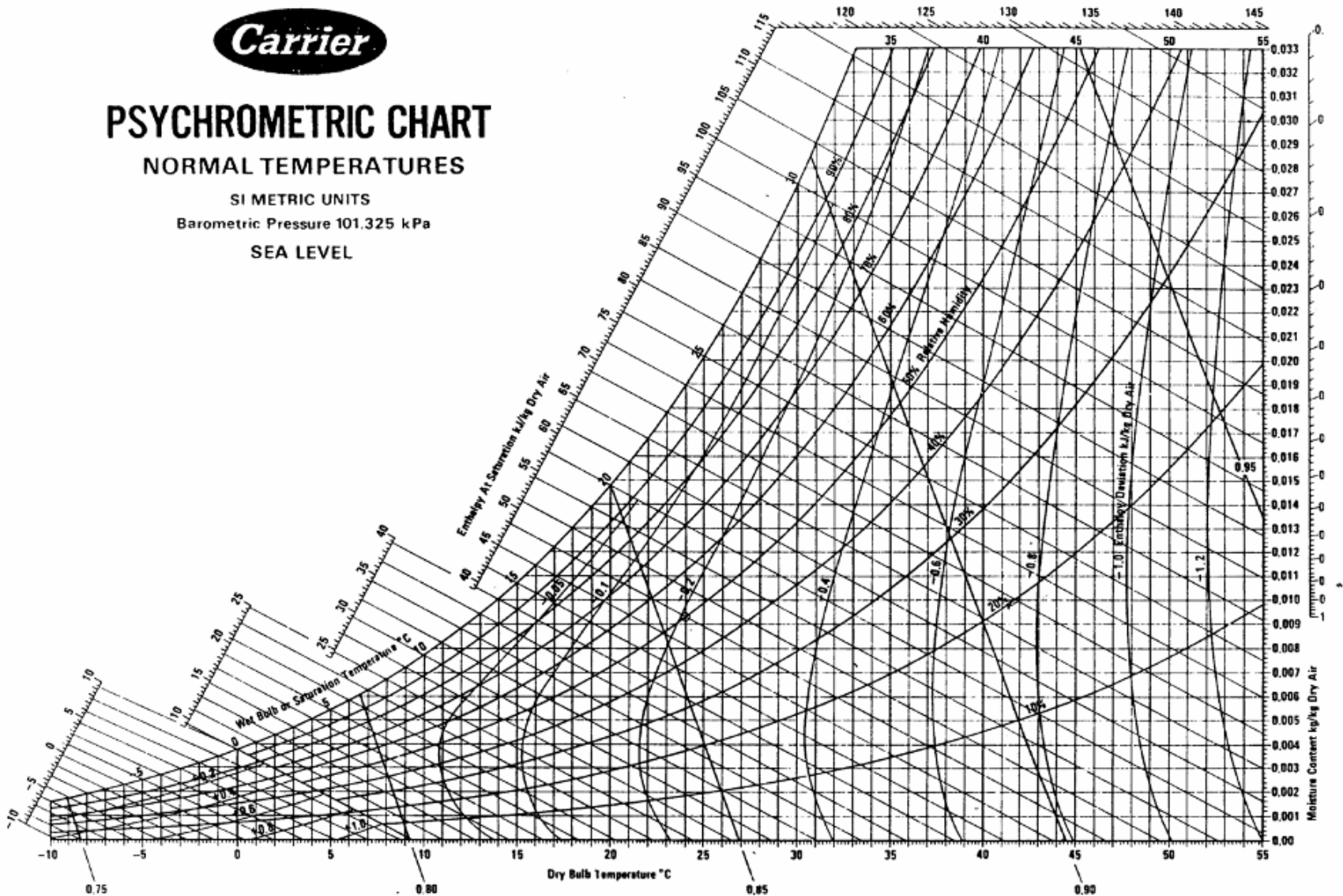
PSYCHROMETRIC CHART

NORMAL TEMPERATURES

SI METRIC UNITS

Barometric Pressure 101.325 kPa

SEA LEVEL



Below 0°C Properties and Enthalpy Deviation Lines Are For Ice

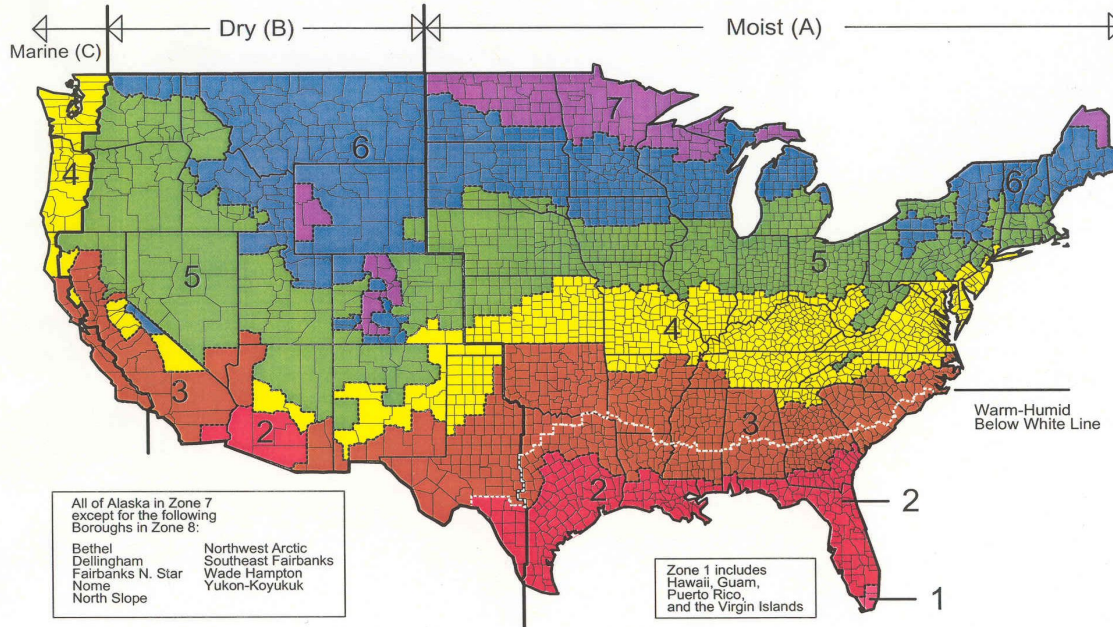
Copyright ©Carrier Corporation 1975
Cat. No. 794-002 Printed in U.S.A.

The Effect of Climate





Map of DOE's Proposed Climate Zones

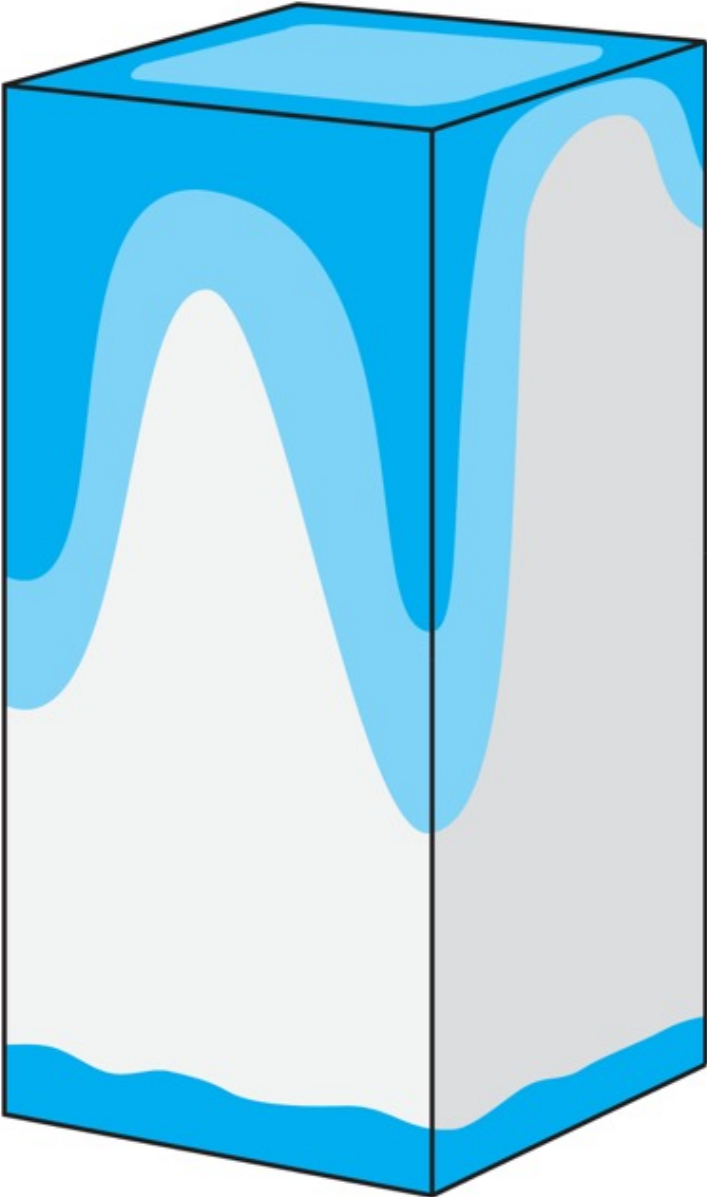


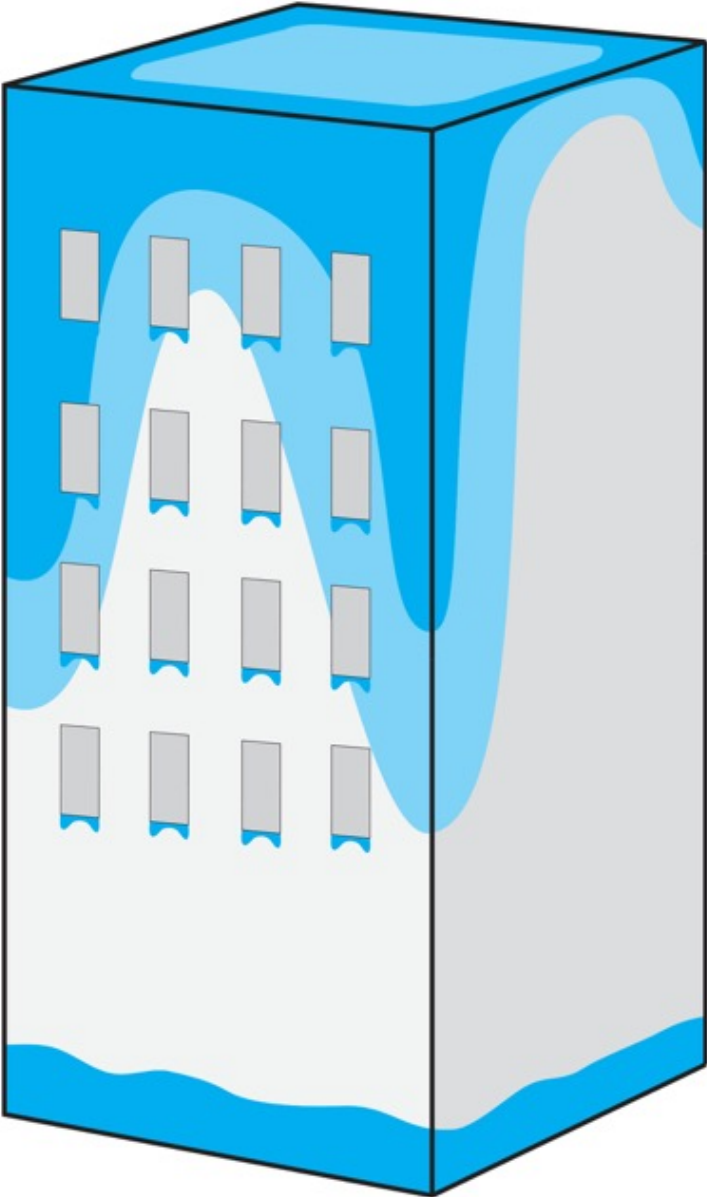
March 24, 2003



Exposure

Extreme	Over 60"
High	40" - 60"
Moderate	20" - 40"
Low	Under 20"





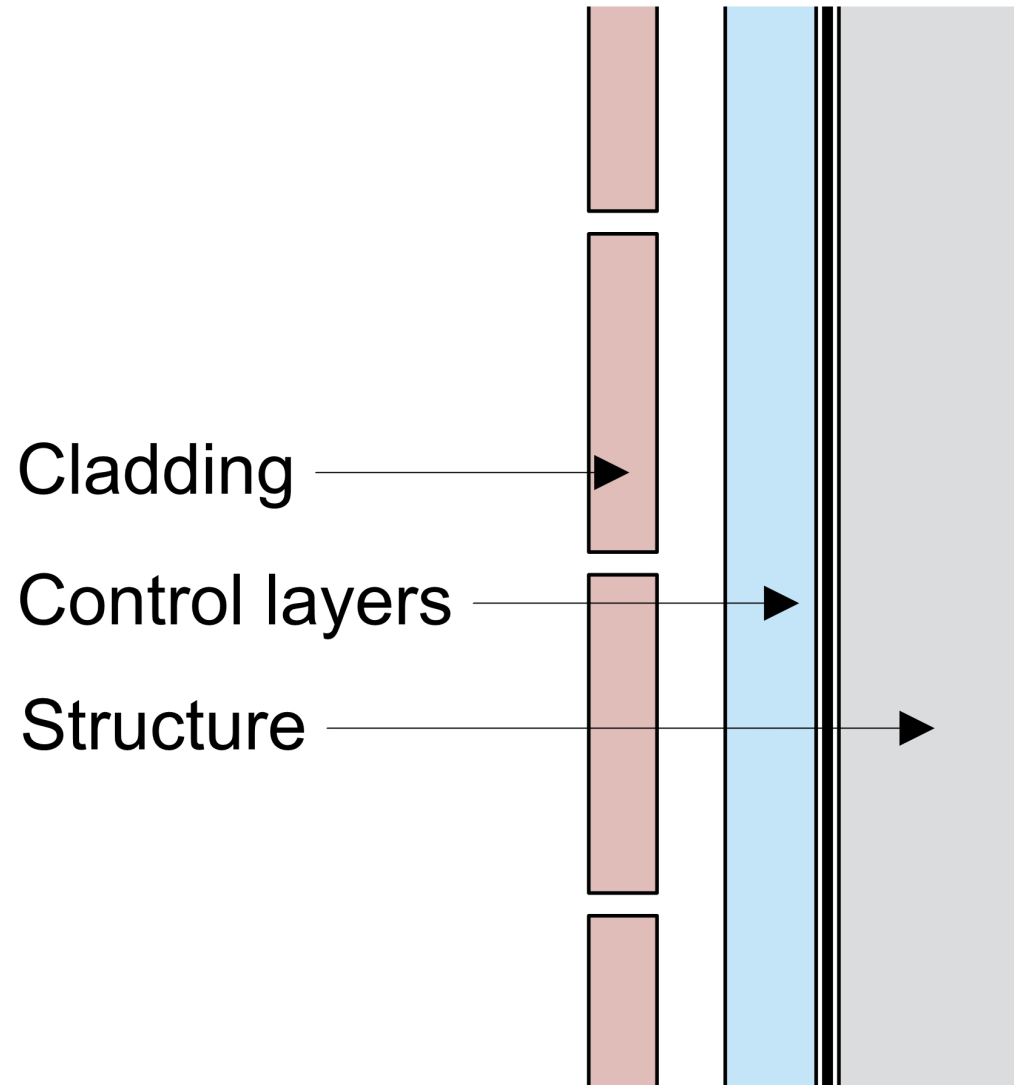
The Perfect Wall

Water Control Layer

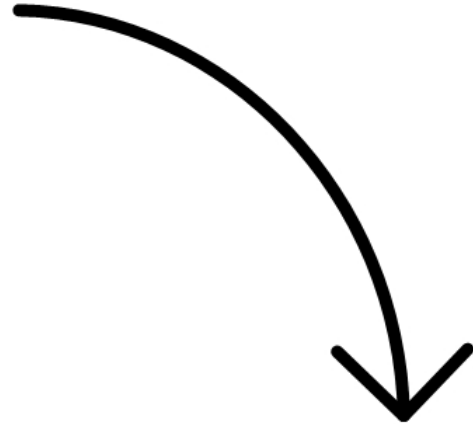
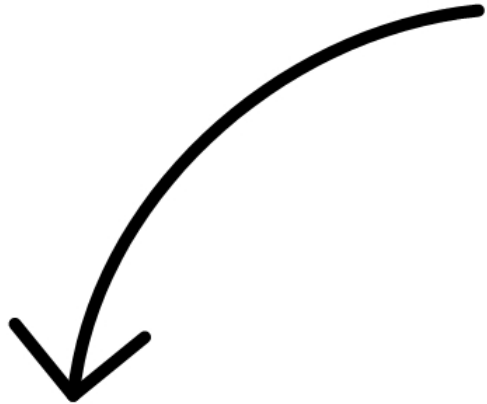
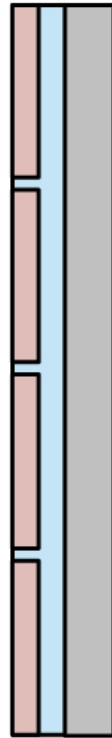
Air Control Layer

Vapor Control Layer

Thermal Control Layer



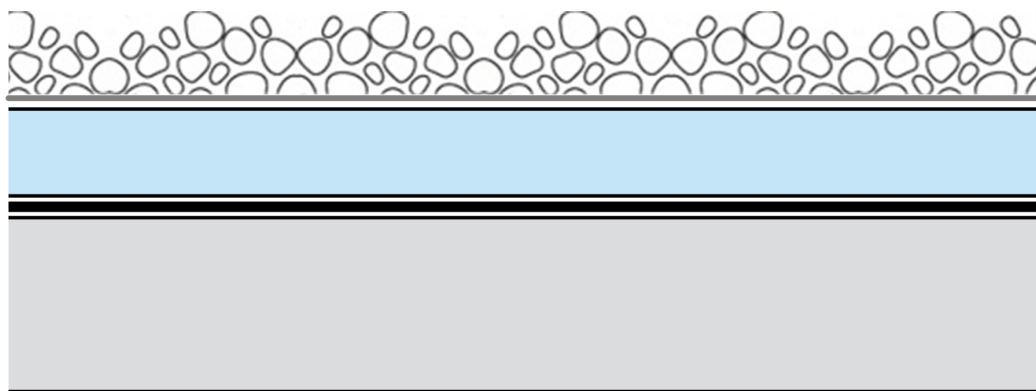
Wall



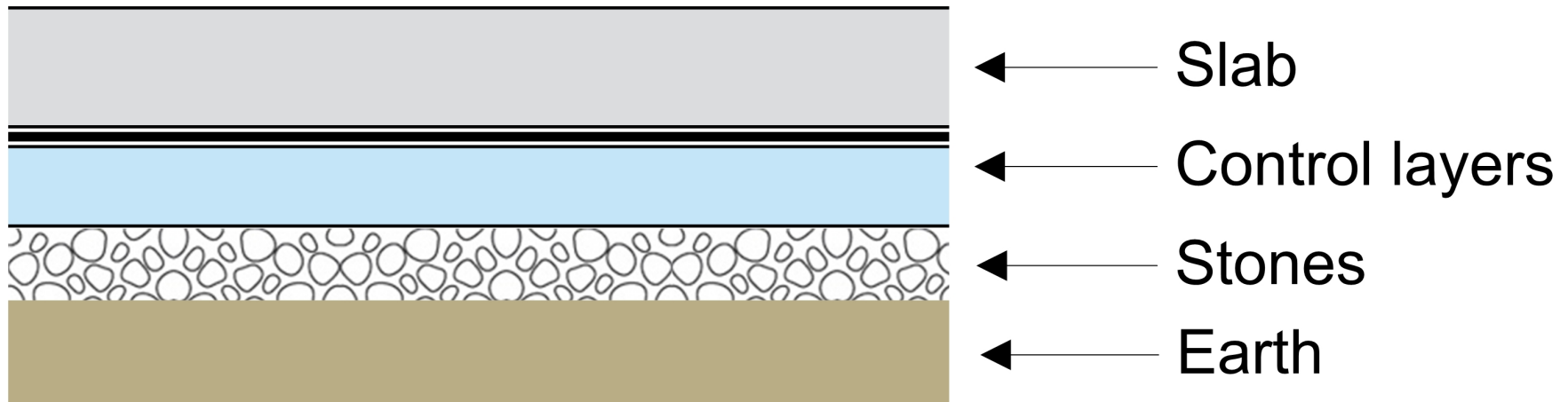
Slab

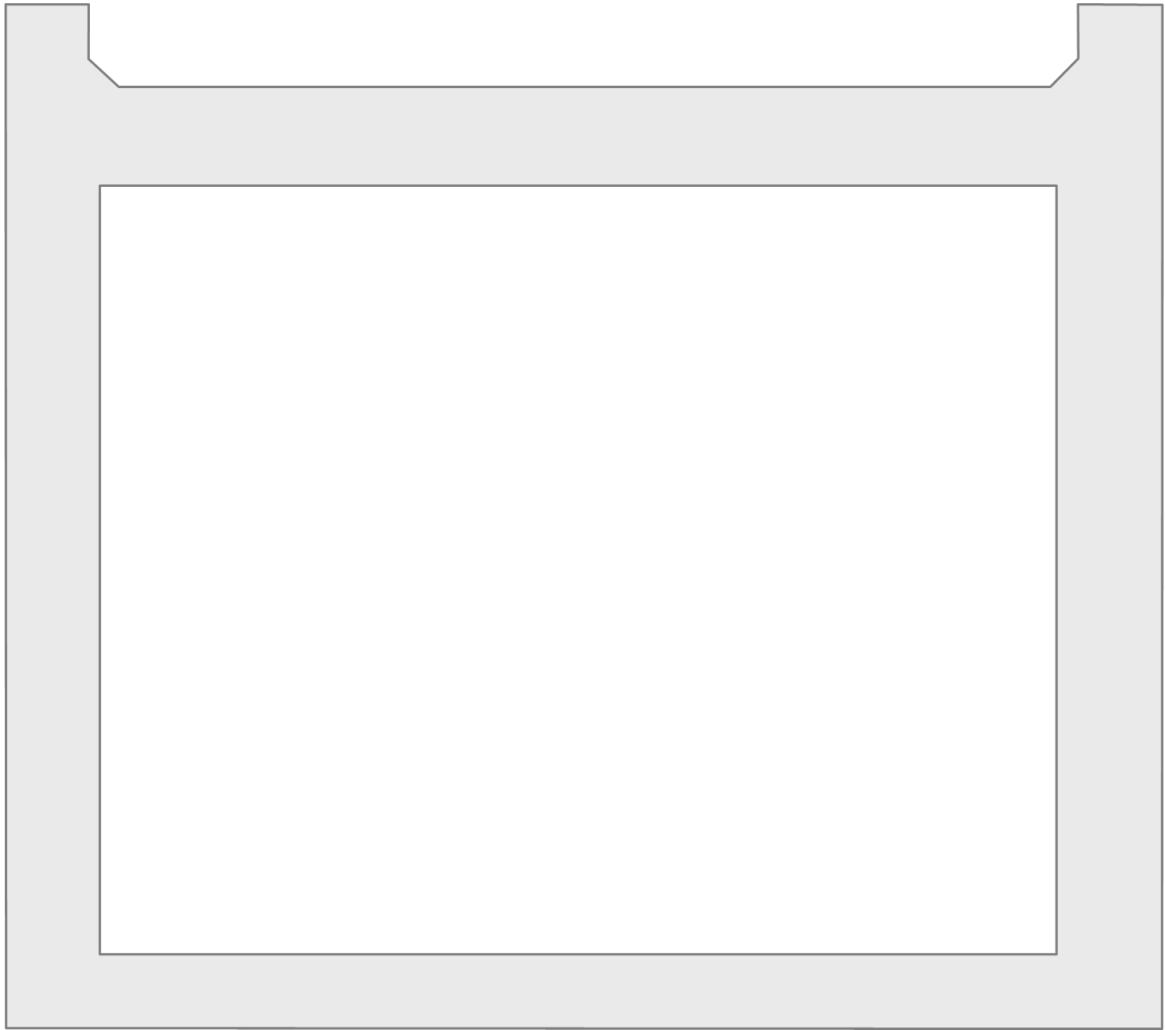


Roof

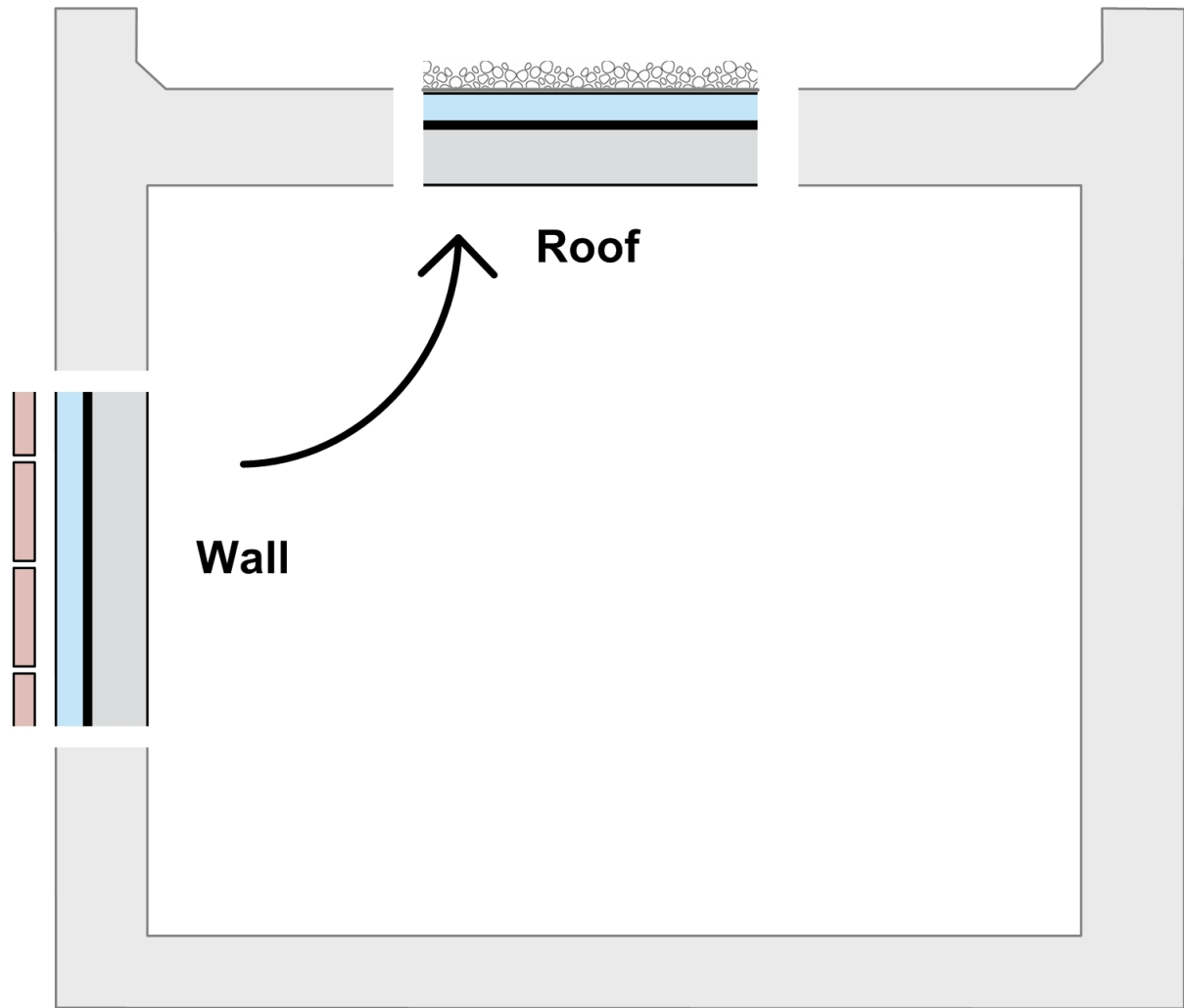


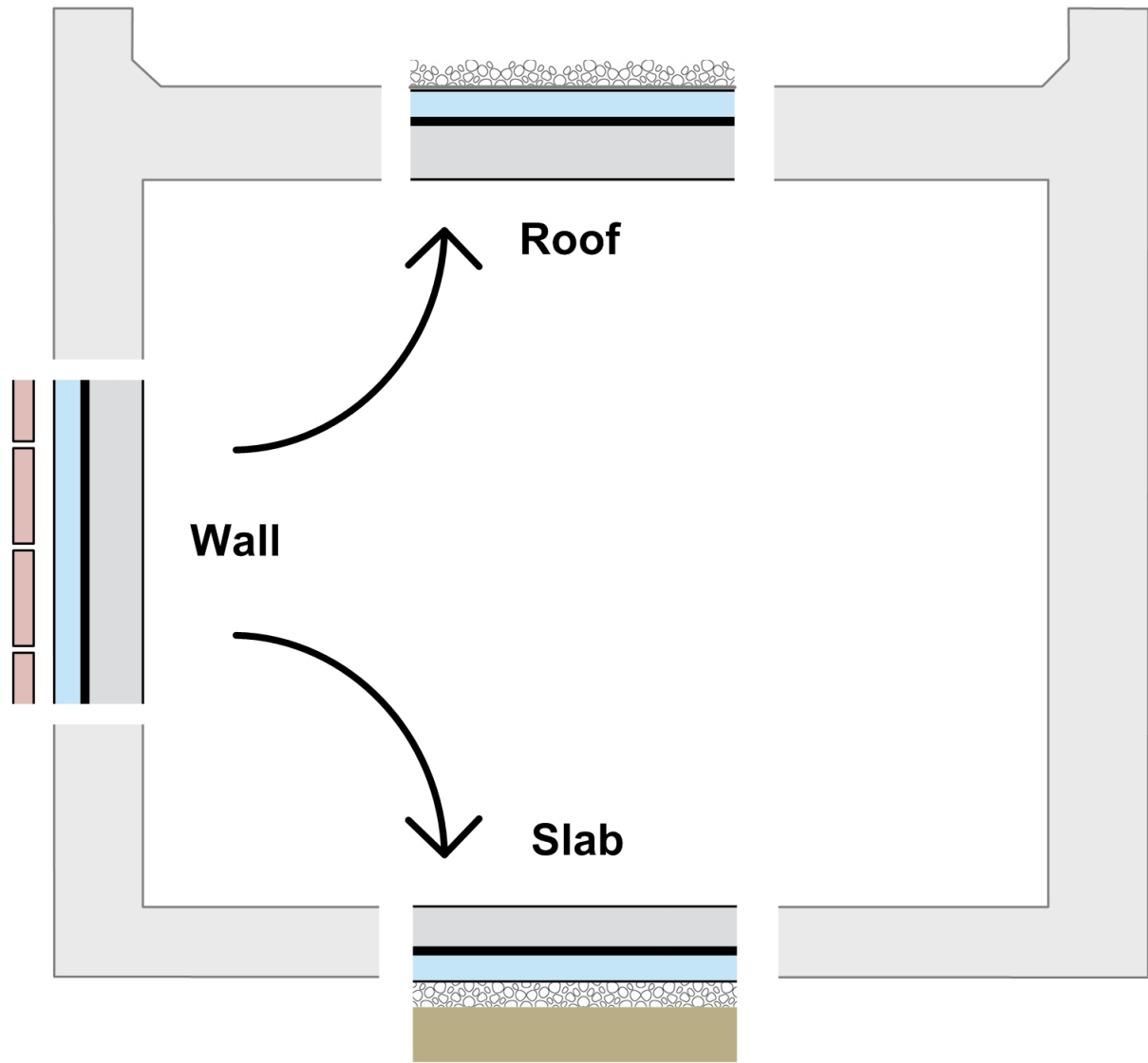
- ← Ballast
- ← Filter fabric
- ← Control layers
- ← Roof structure

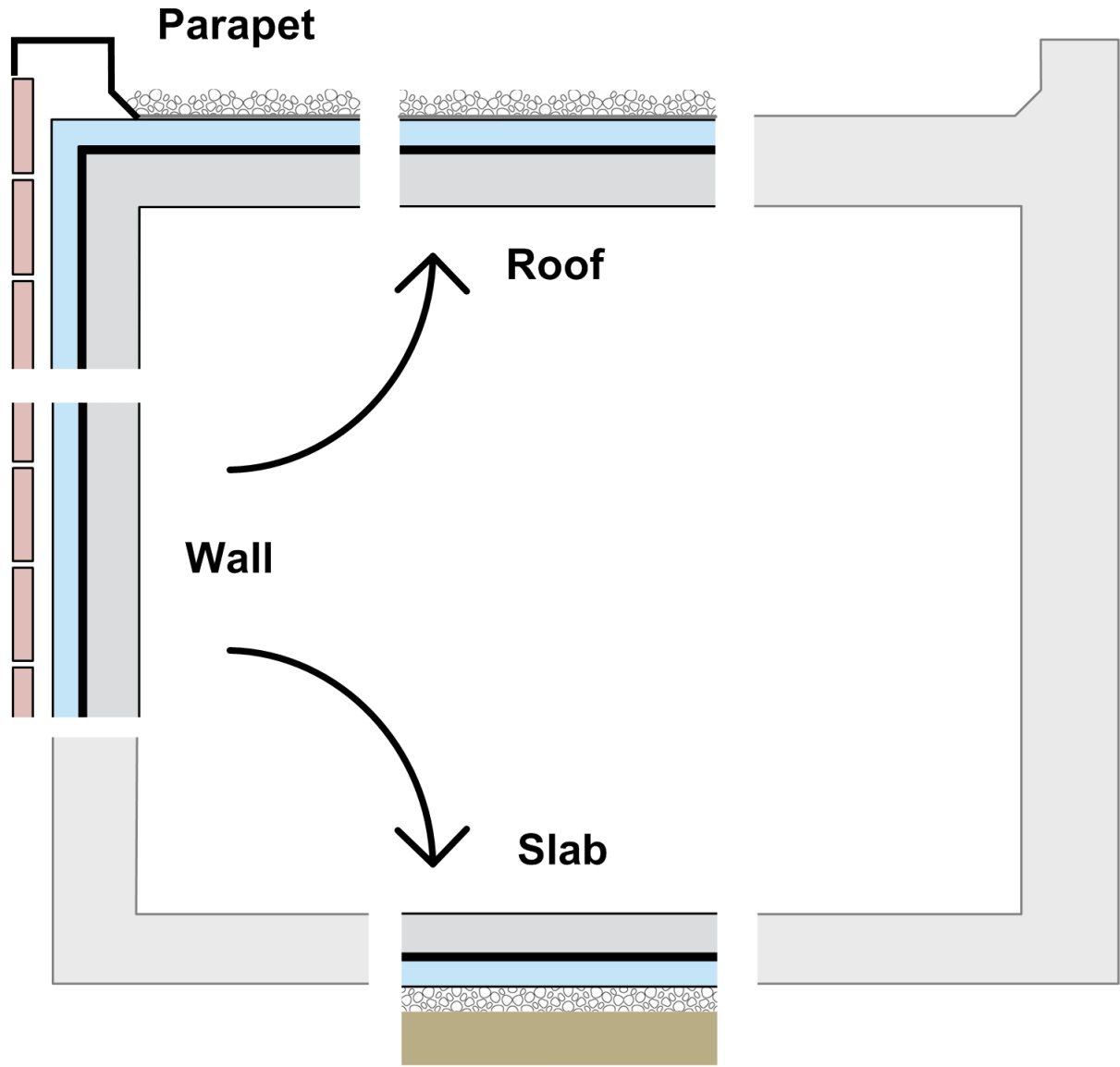


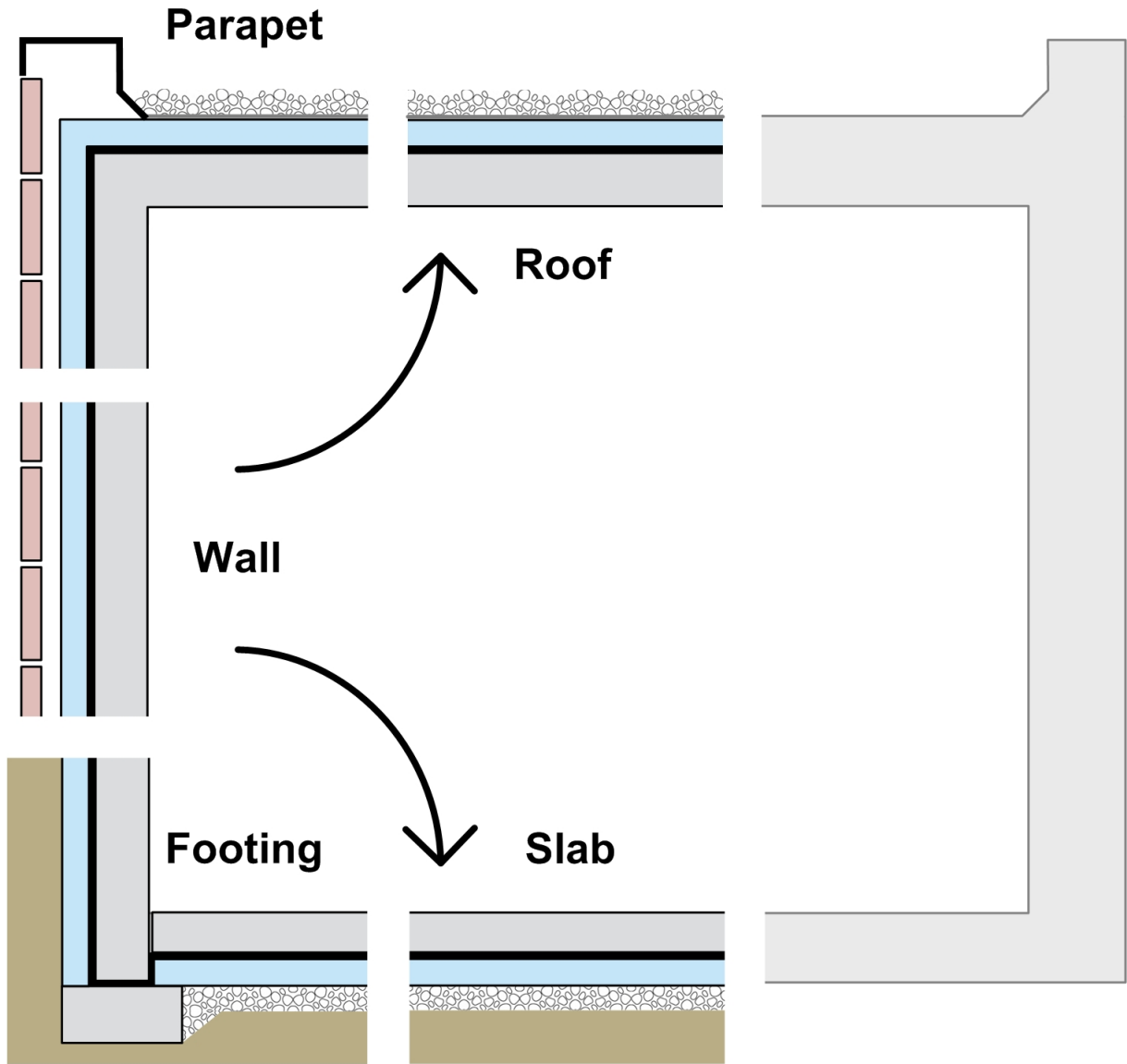


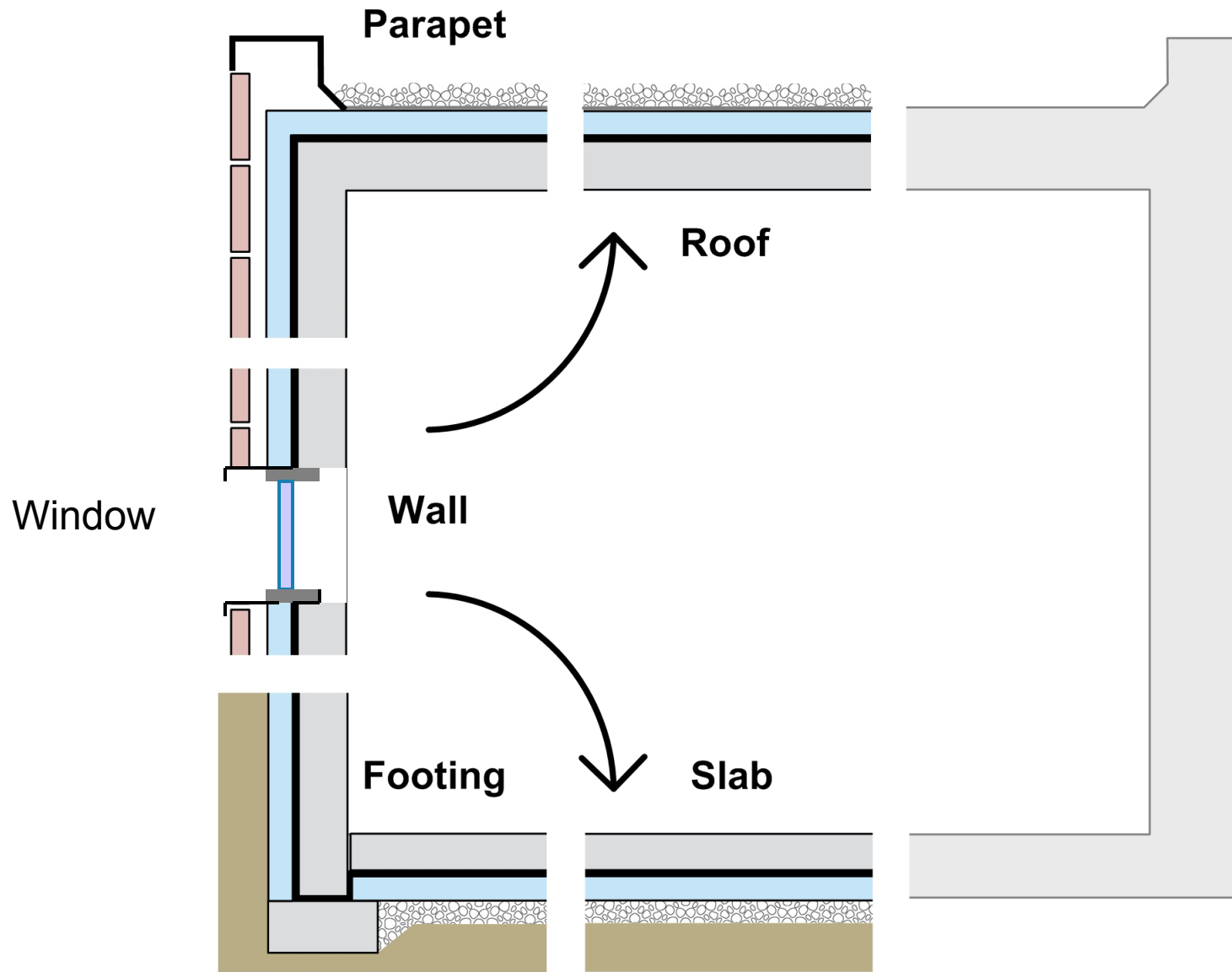


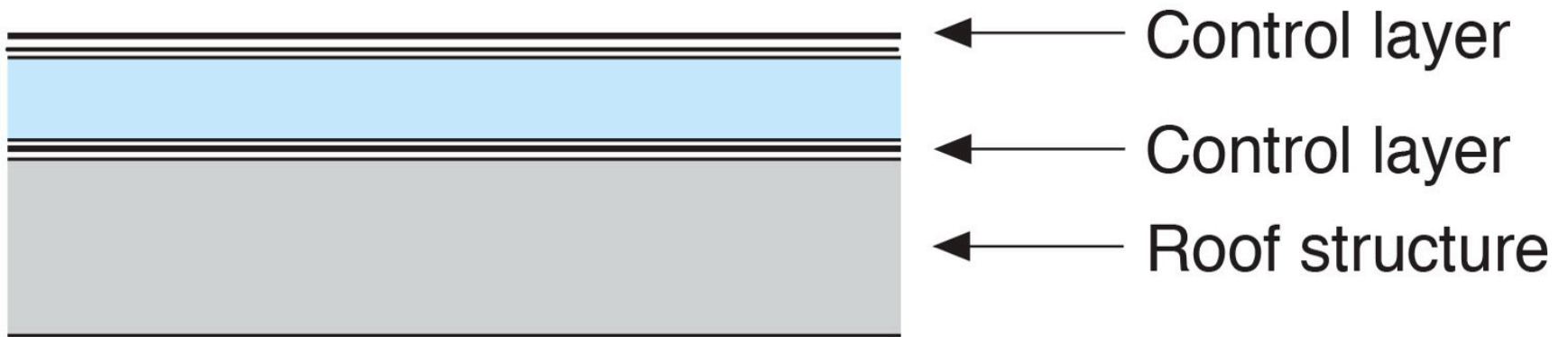


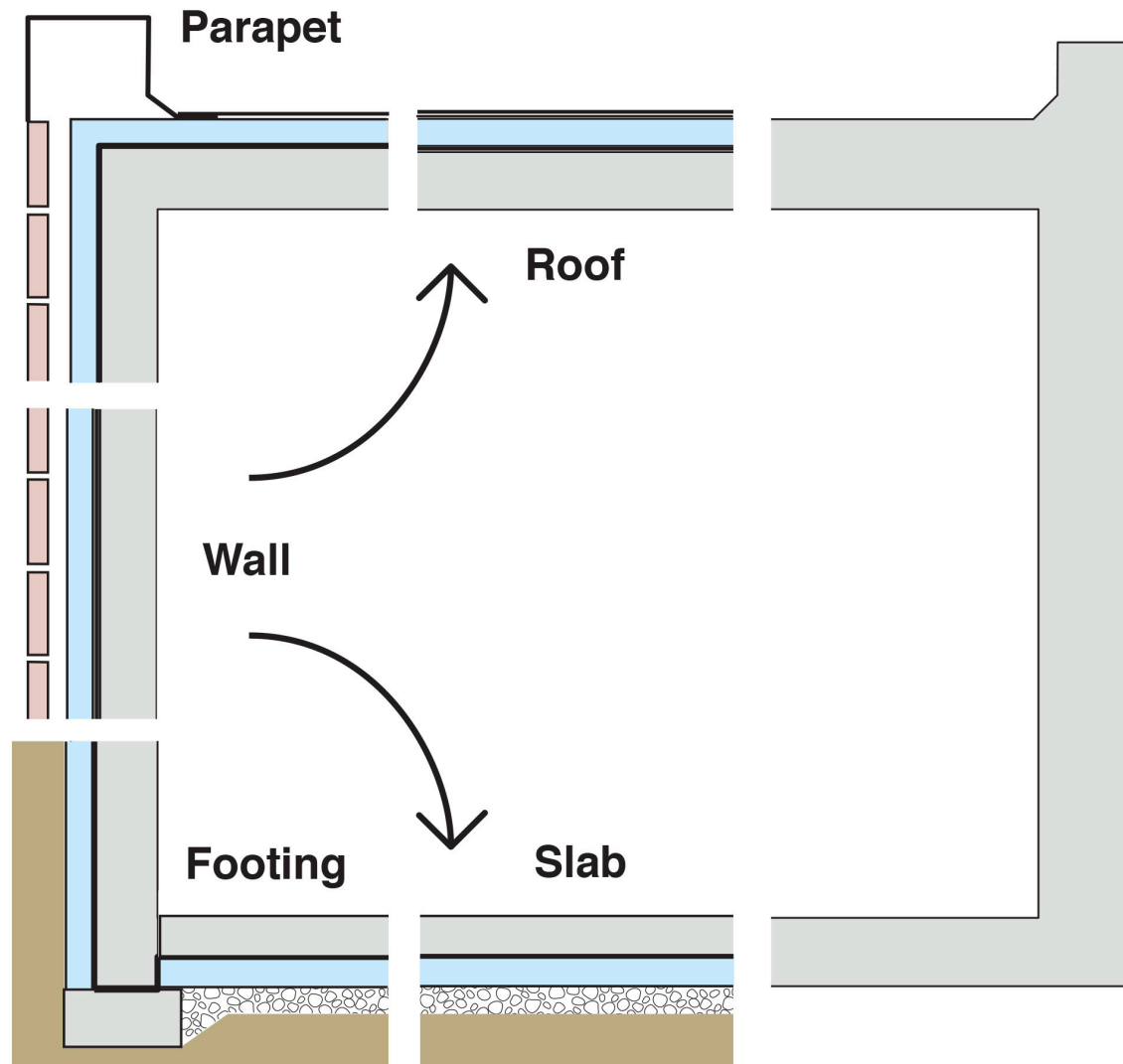


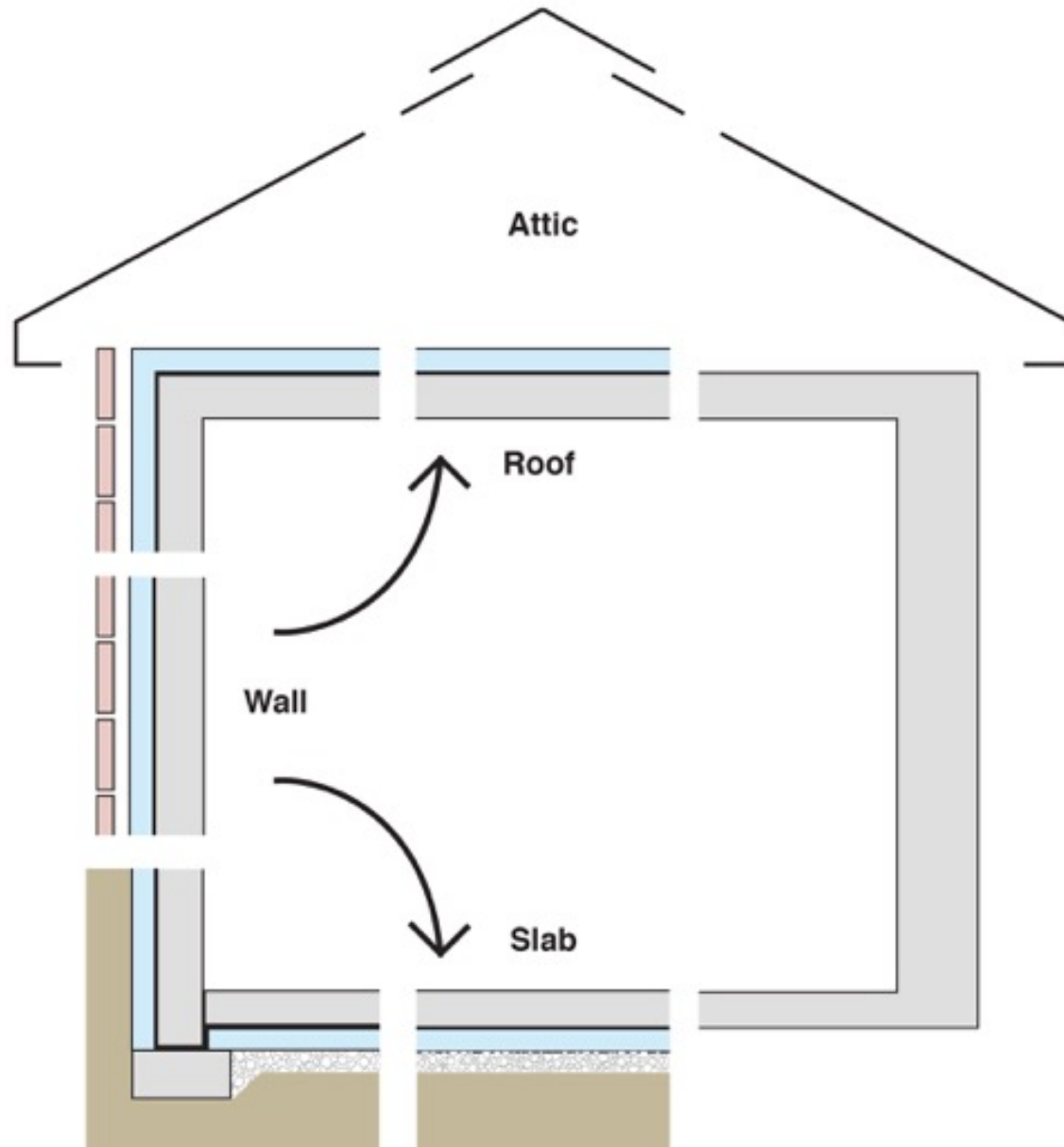


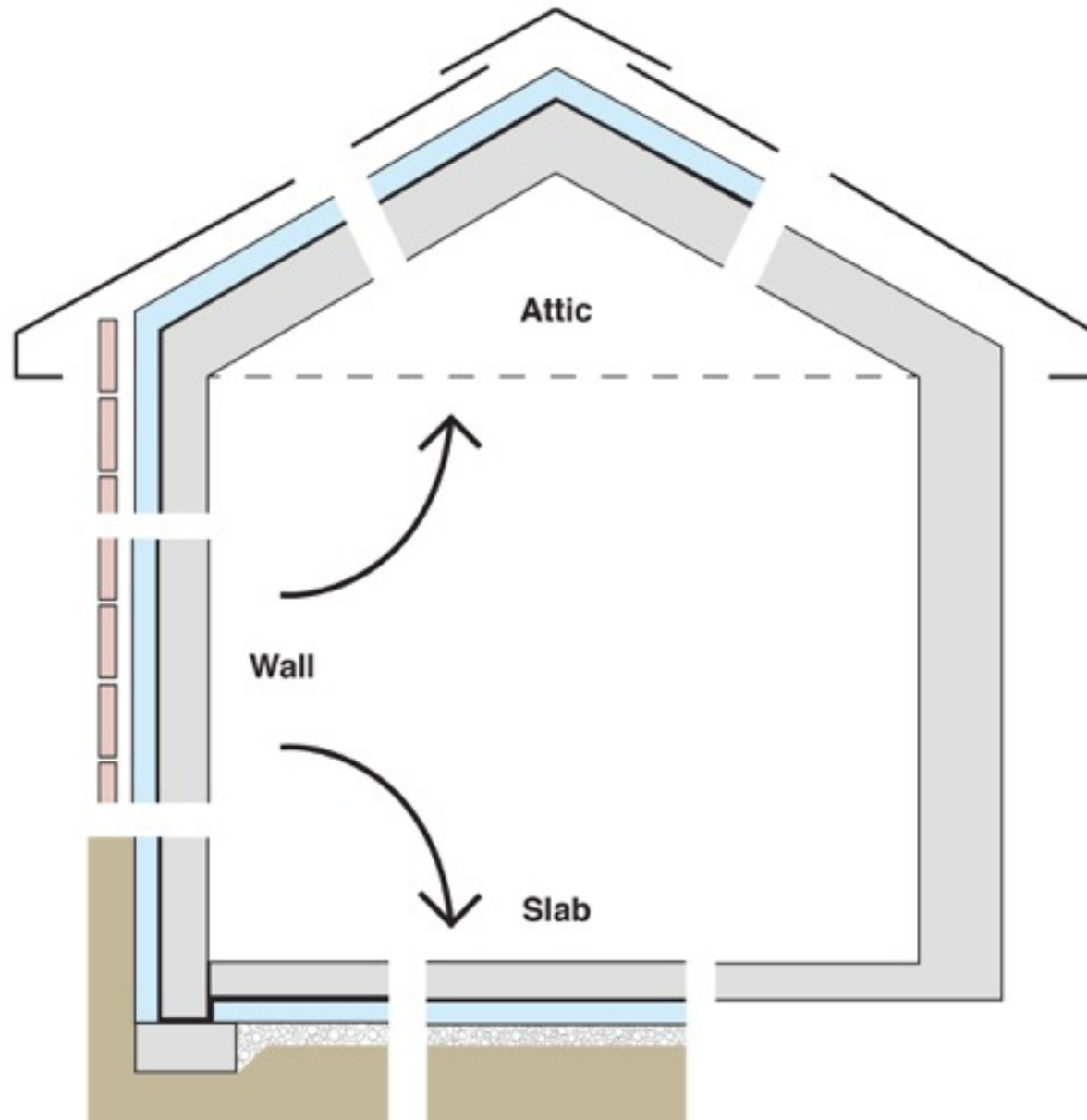


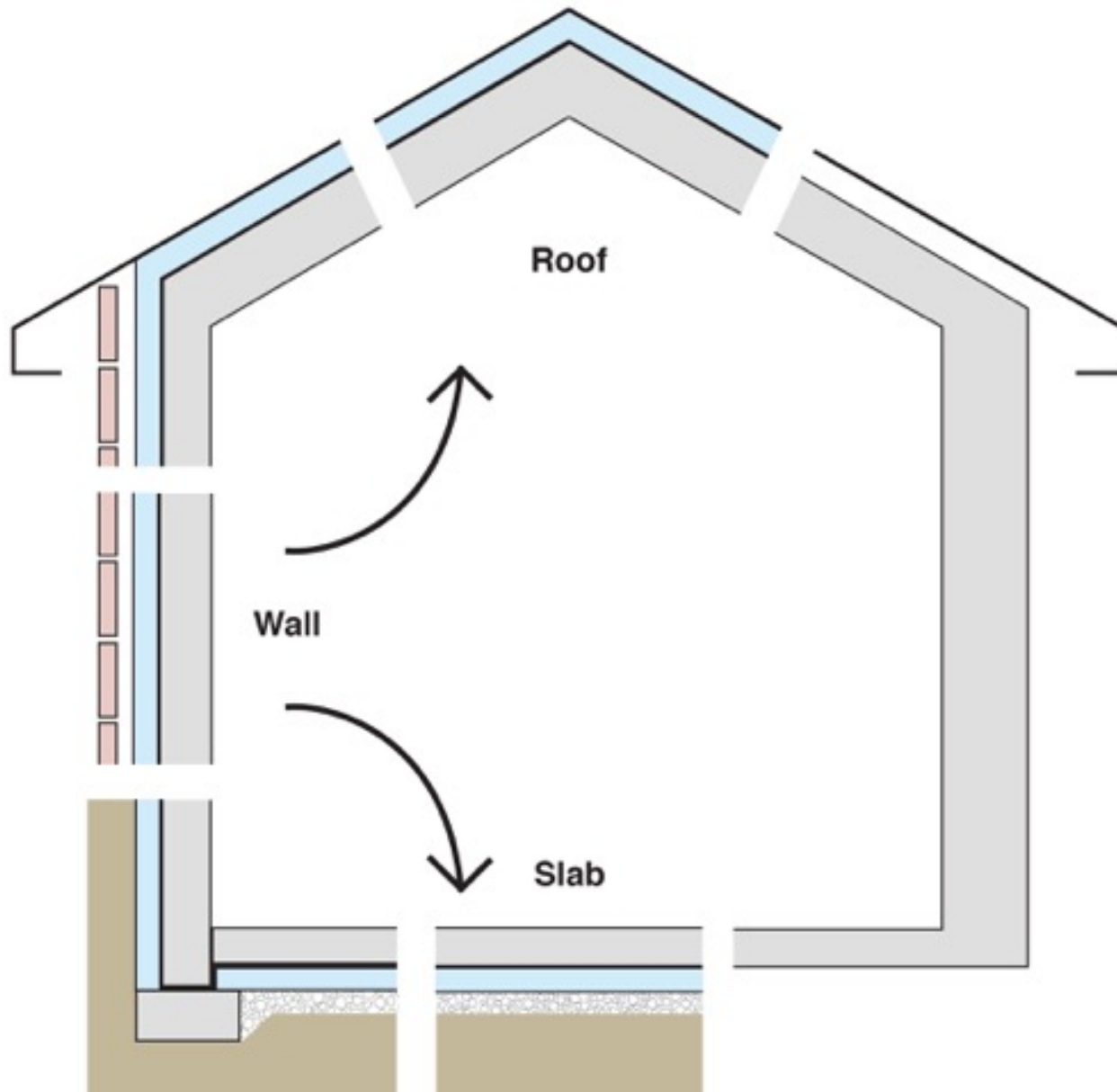




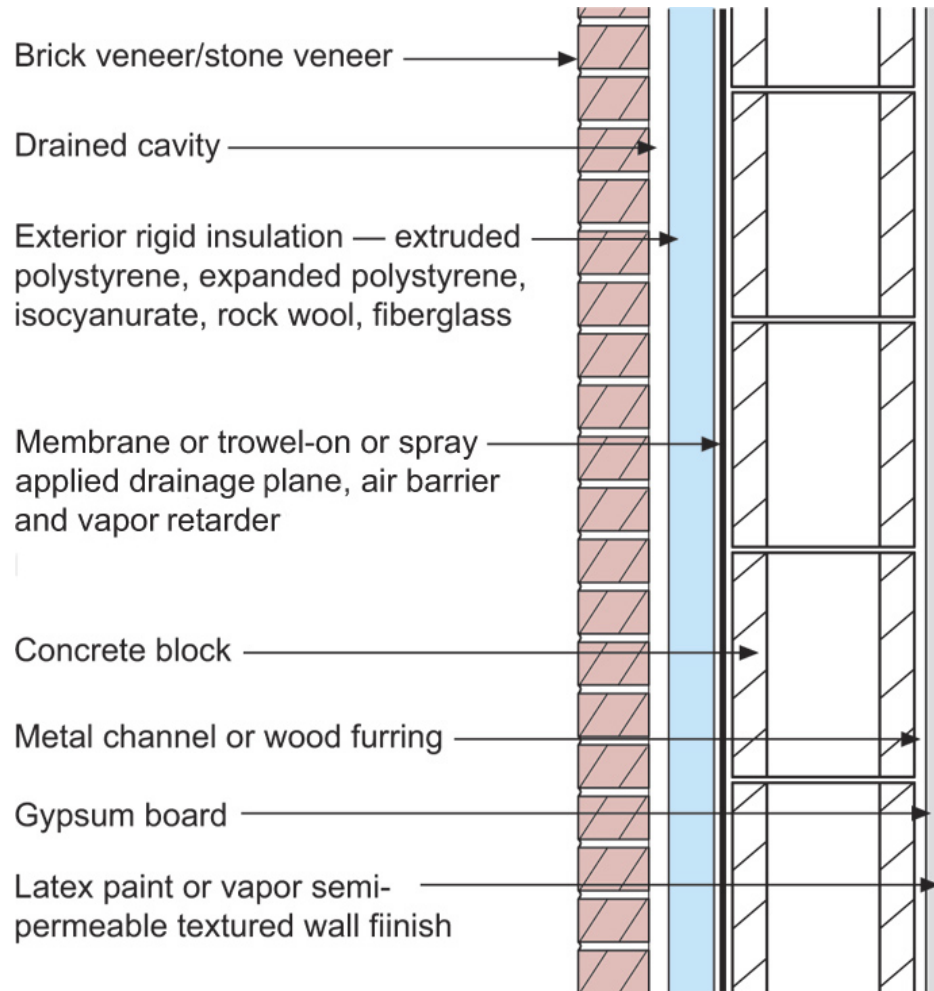




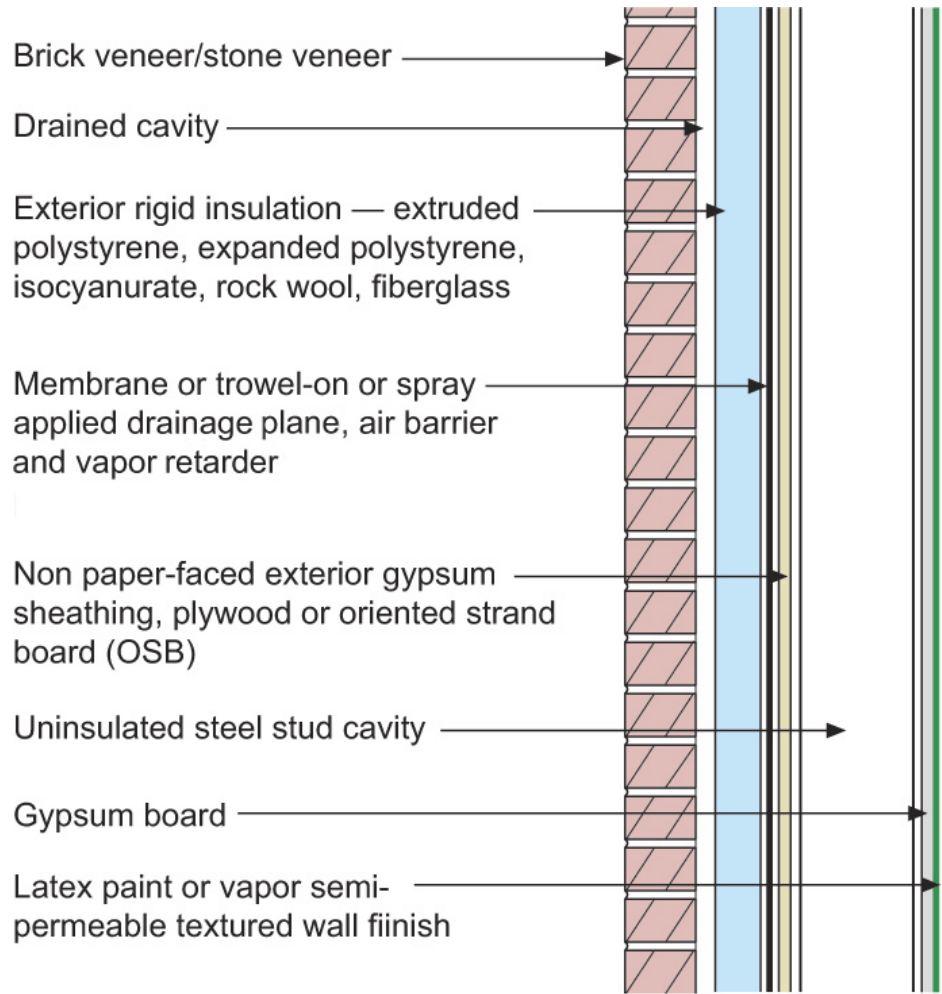


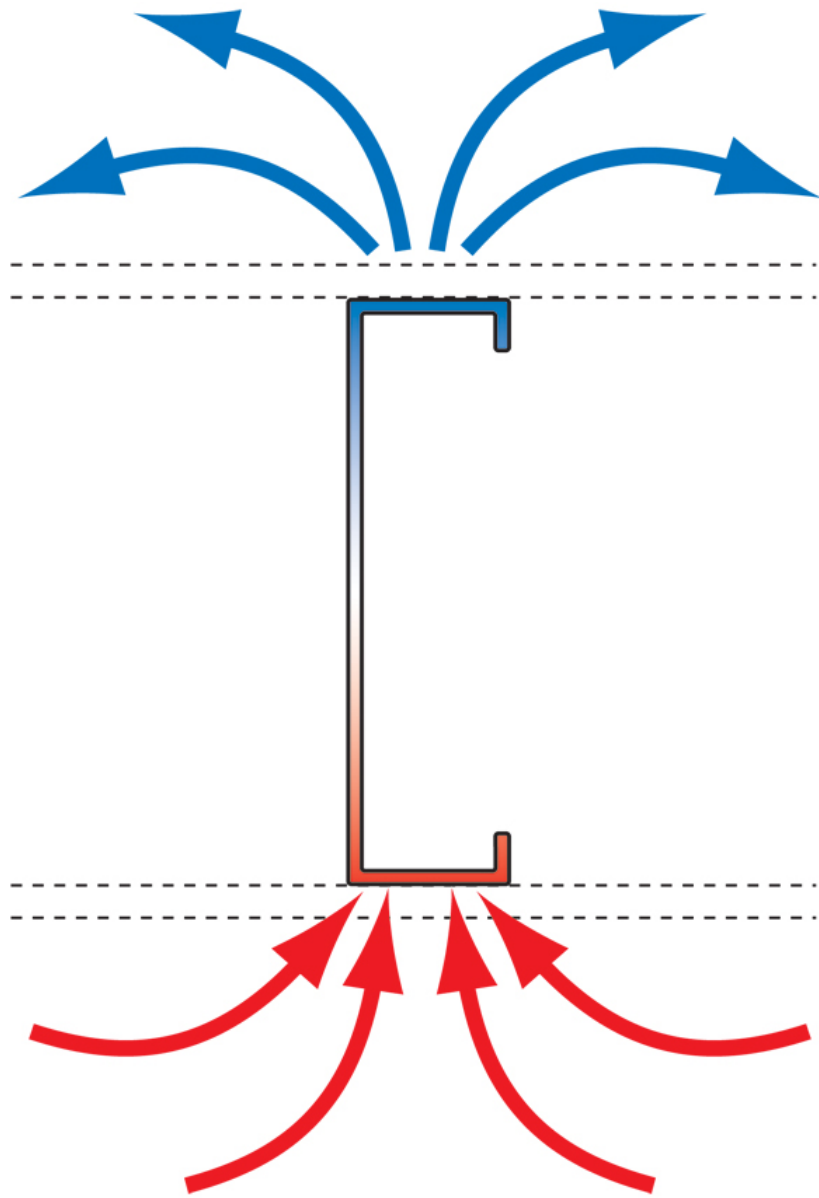


Configurations of the Perfect Wall

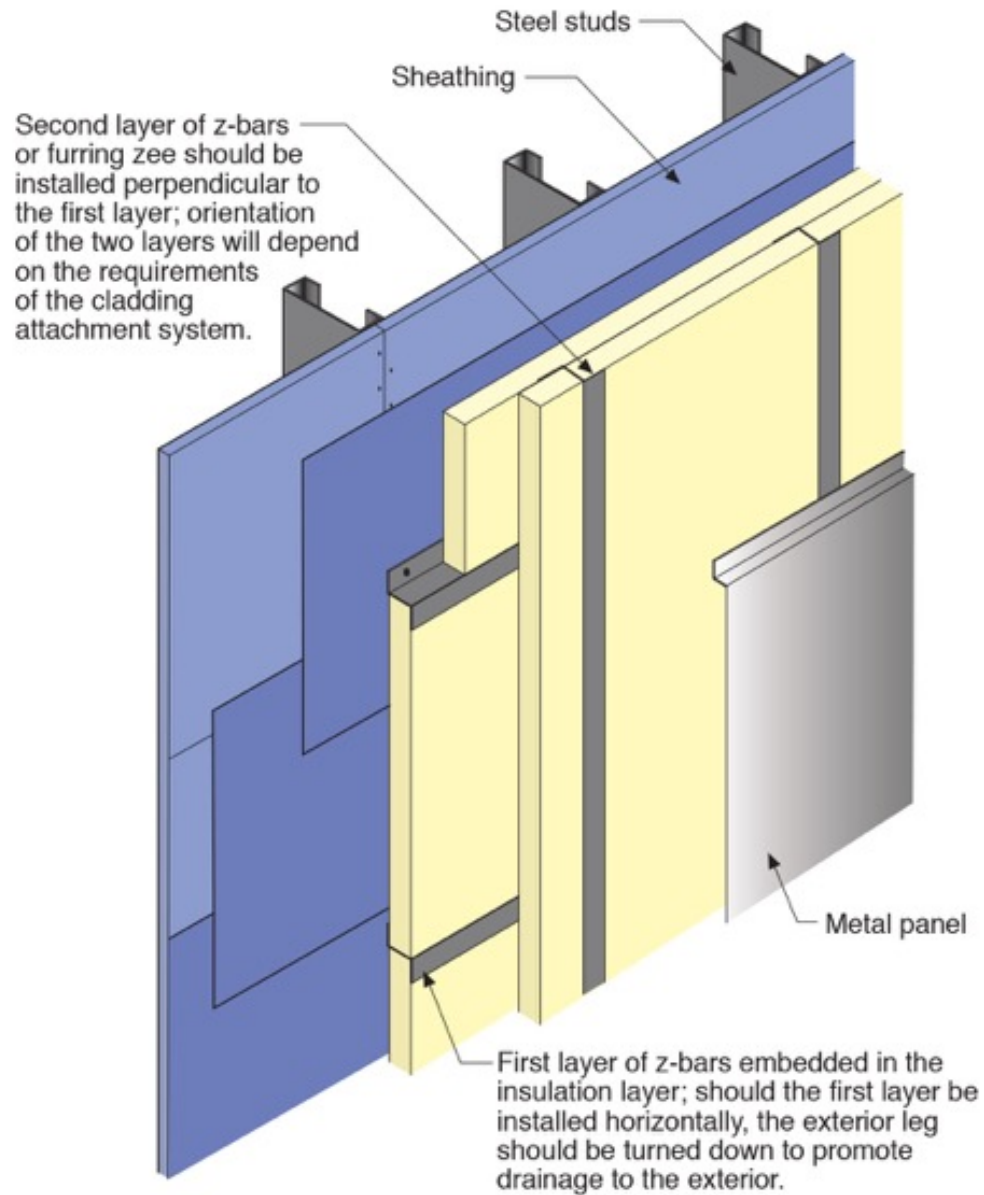


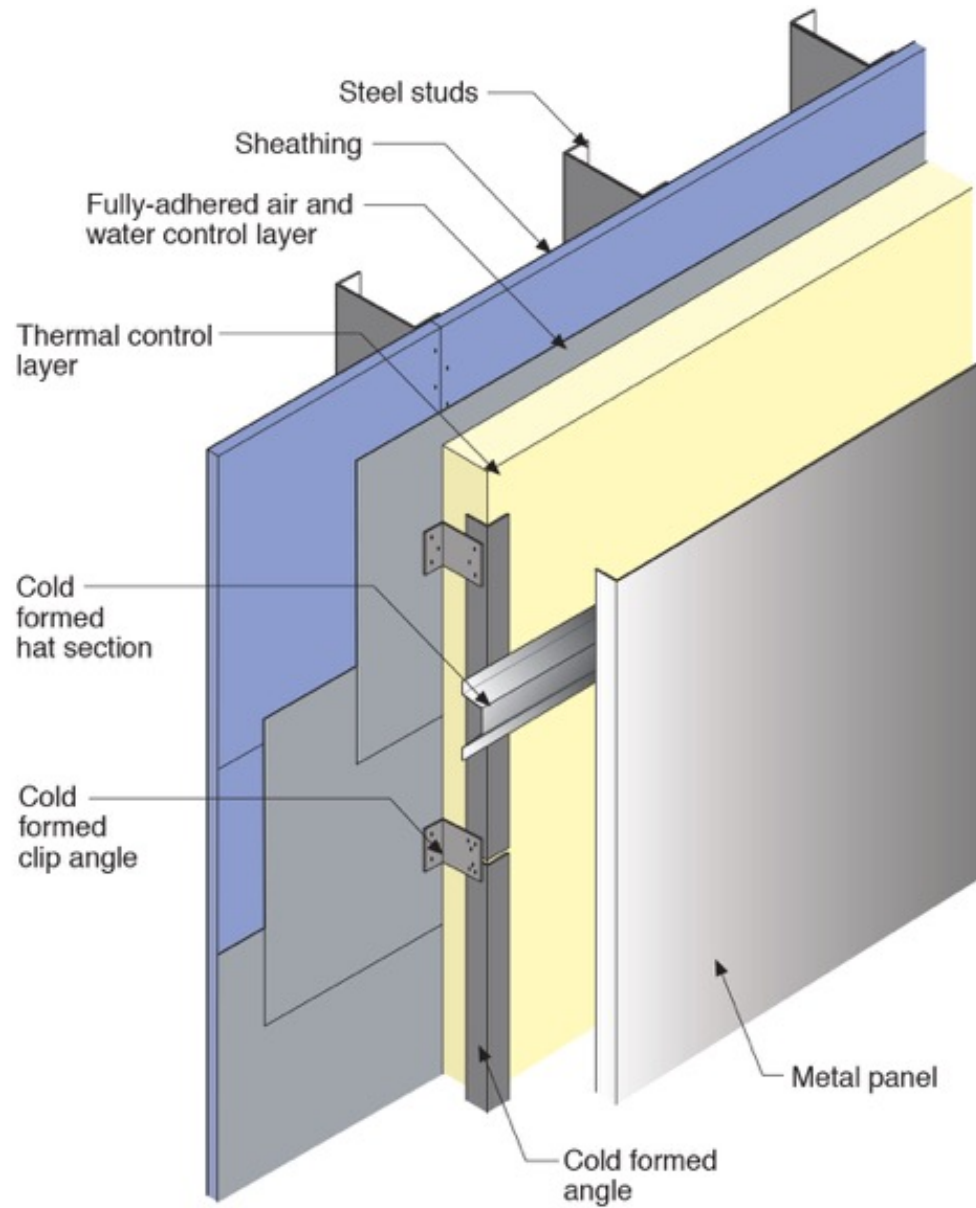
Vapor Profile







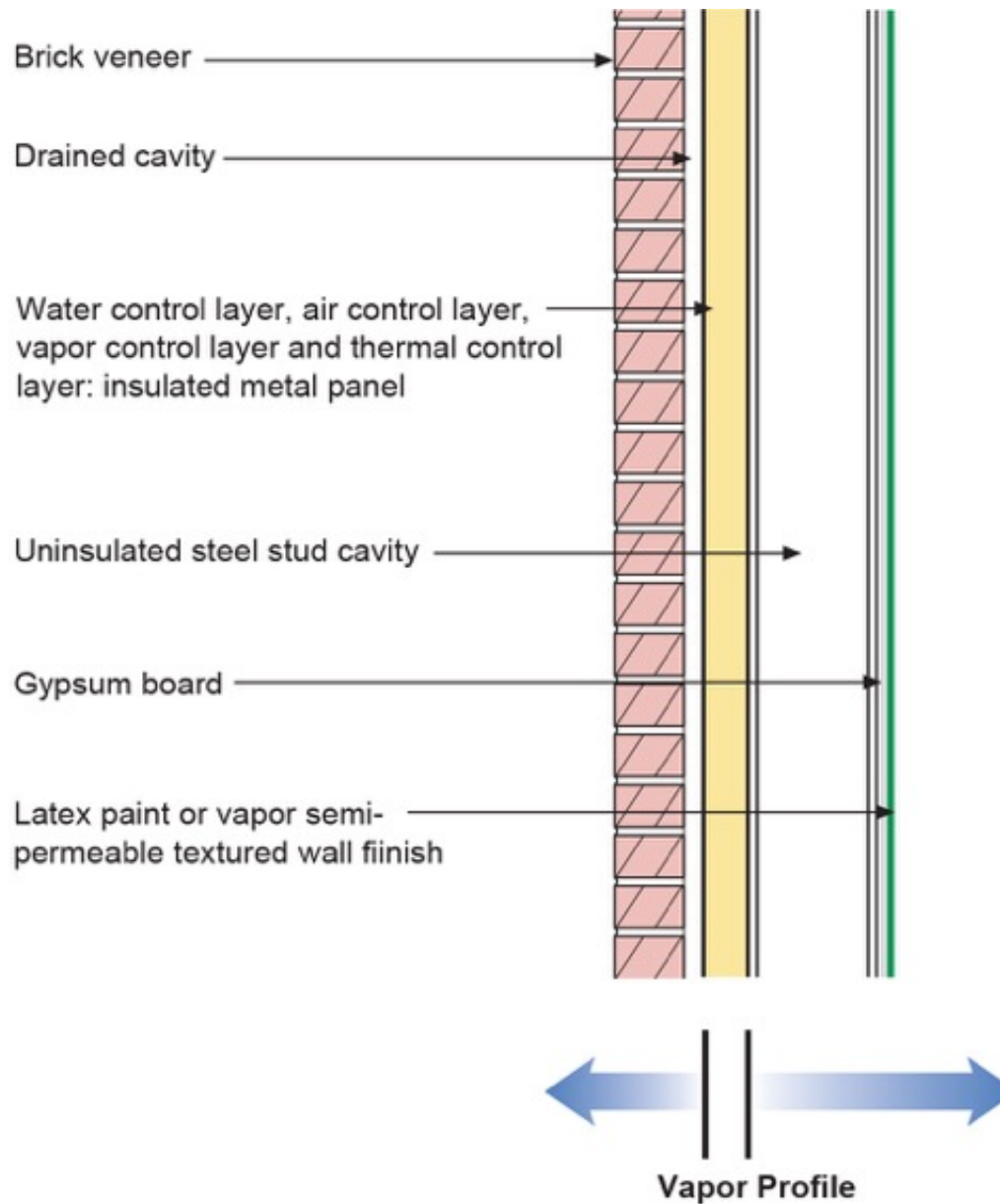


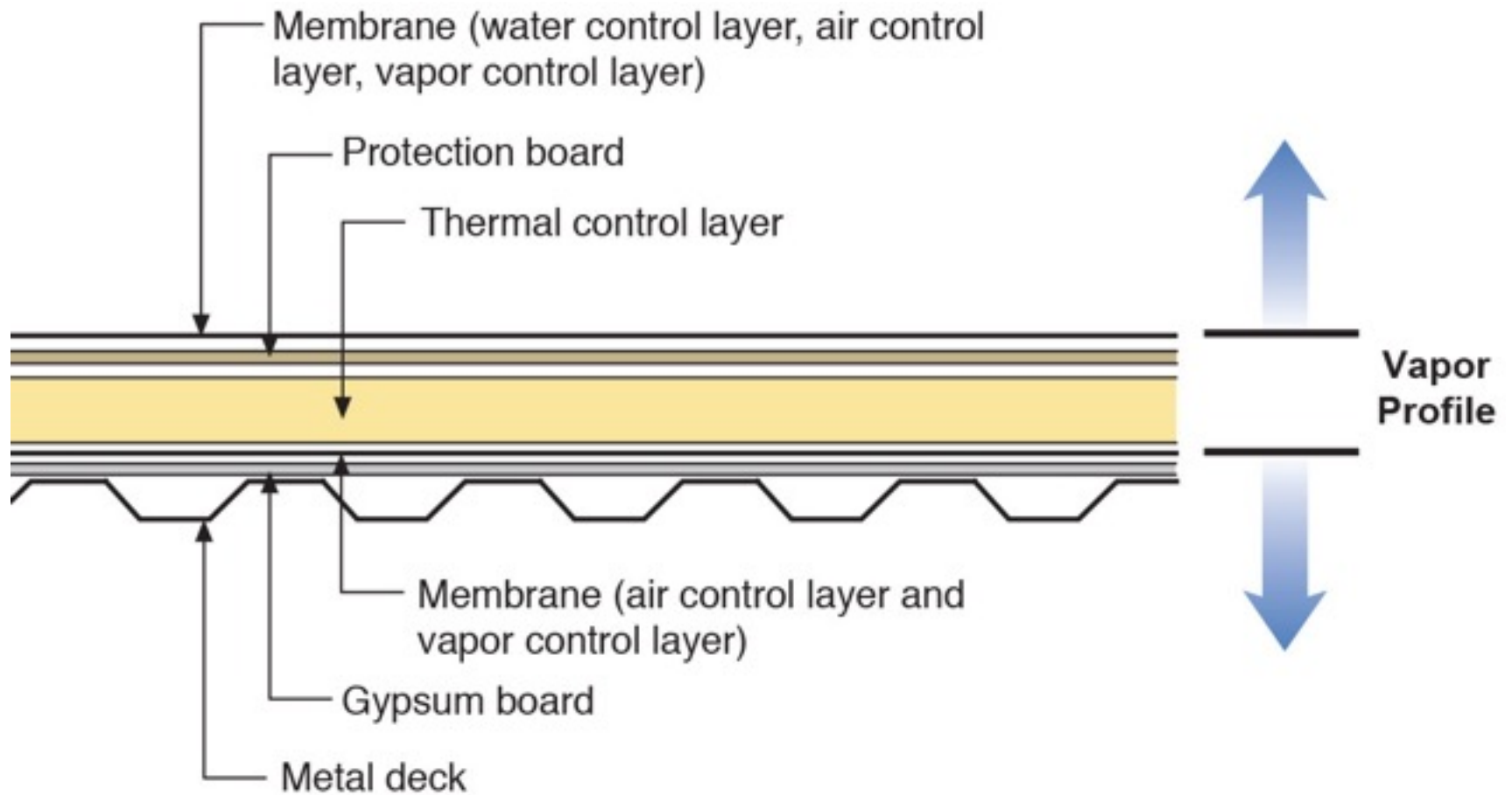


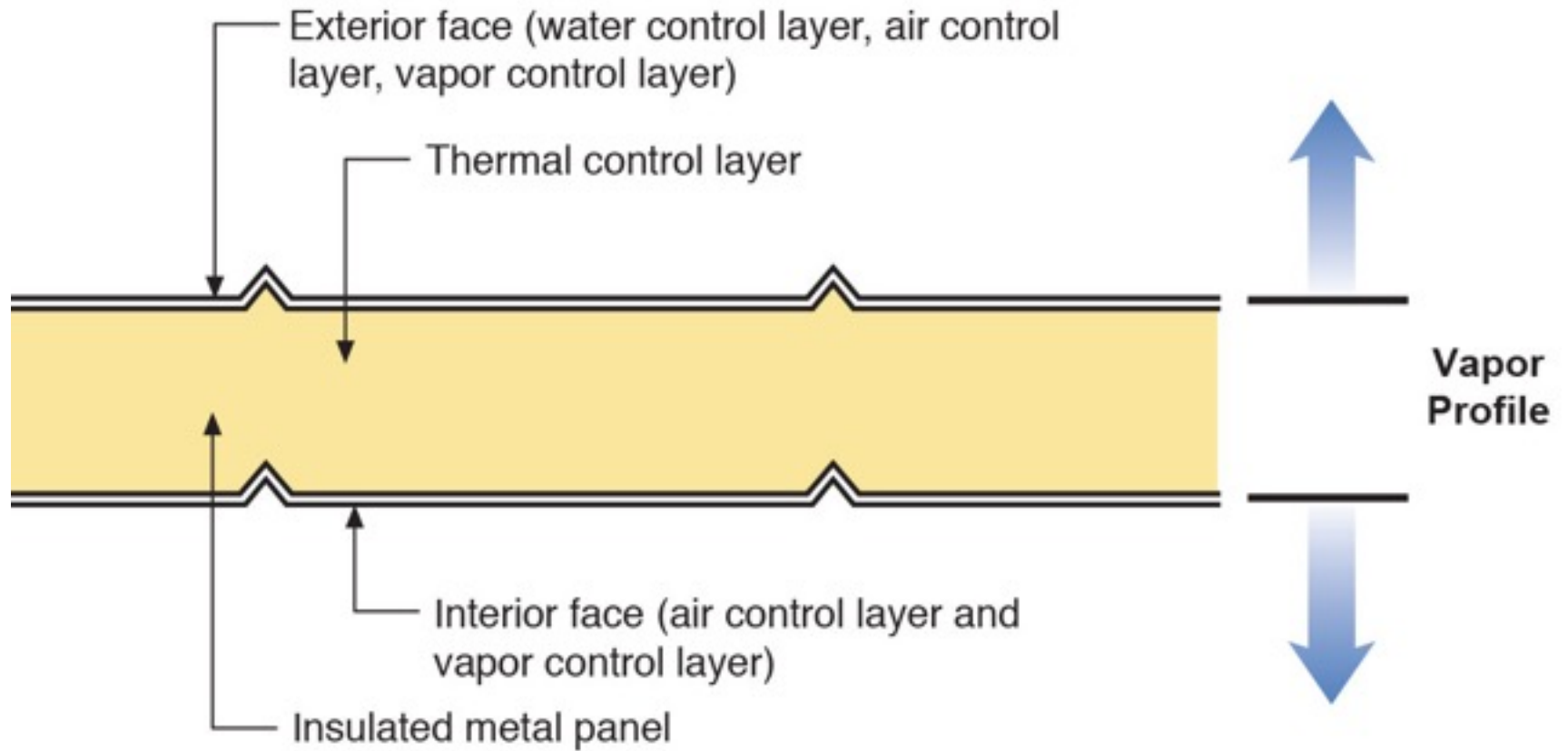


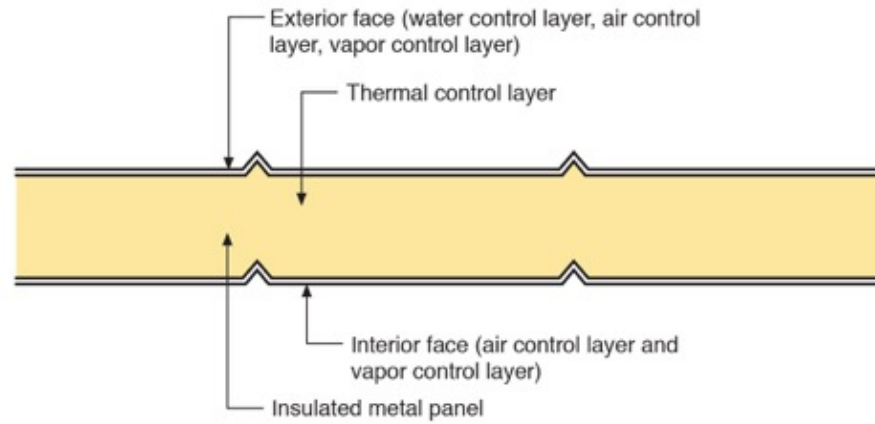




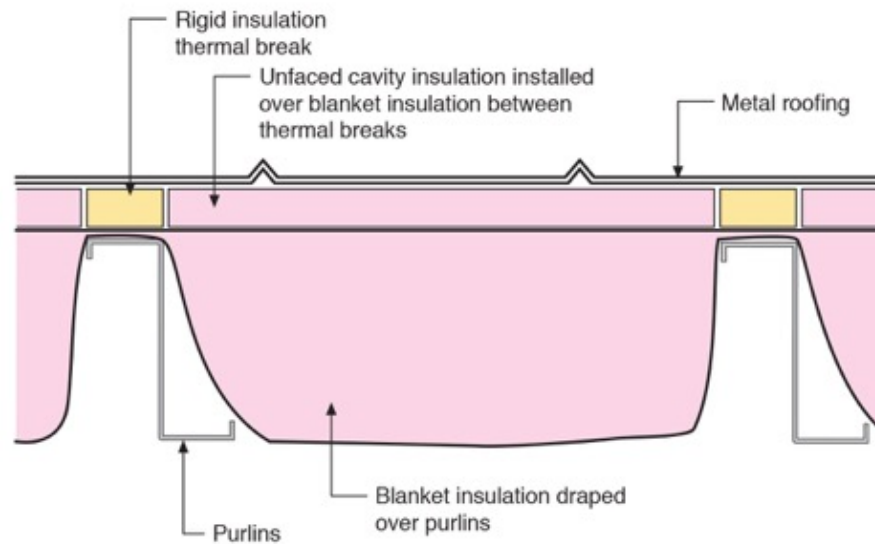




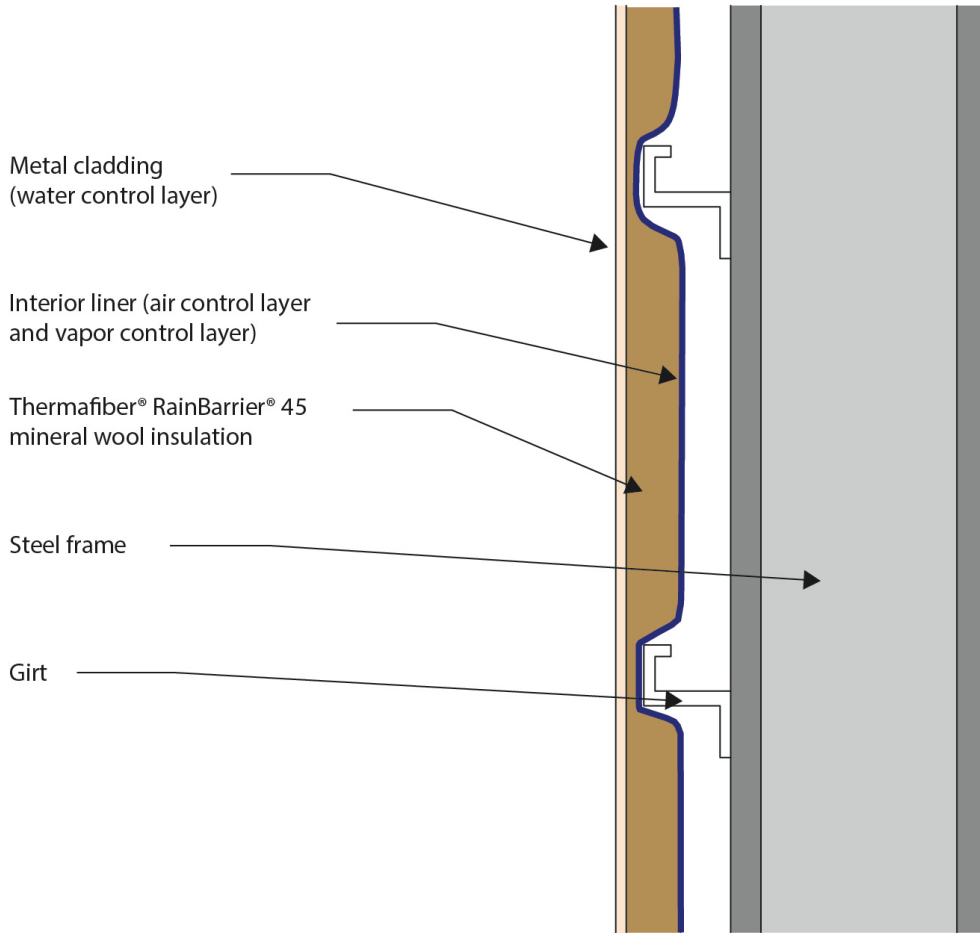
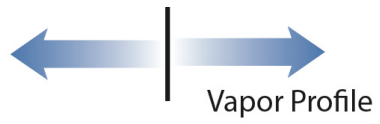


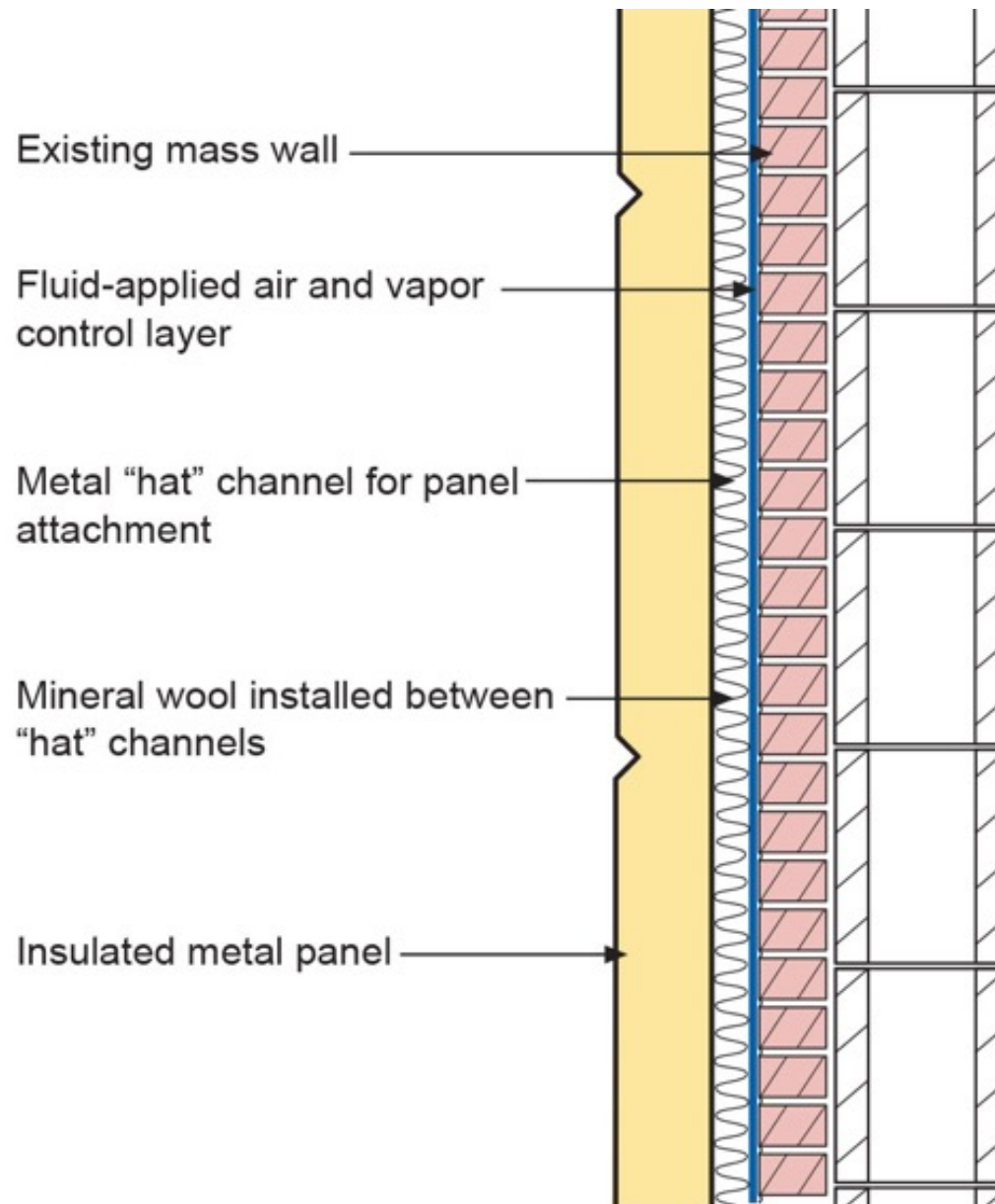


Insulated Metal Panel Roof System



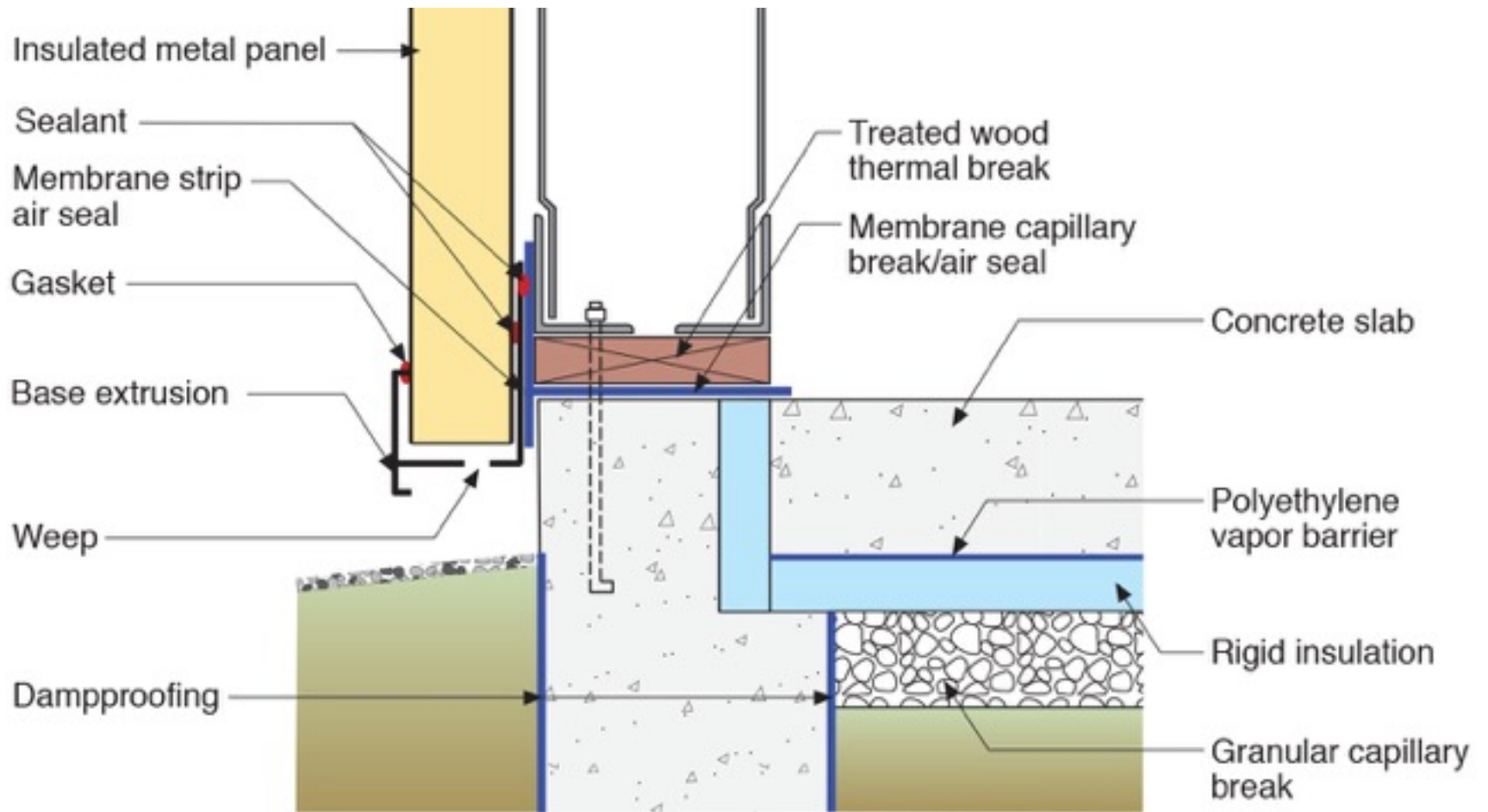
Blanket Insulation Purlin Roof System







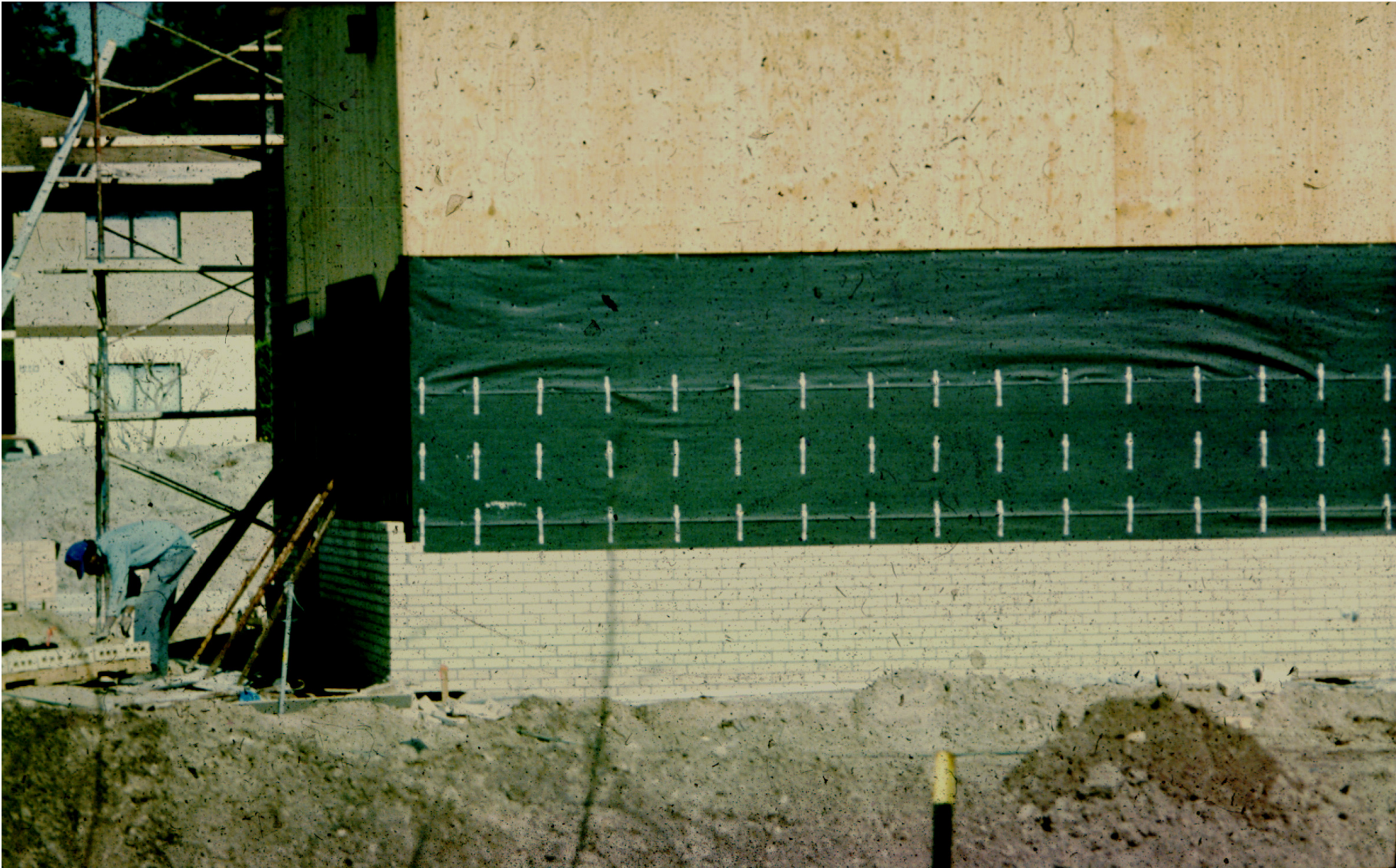


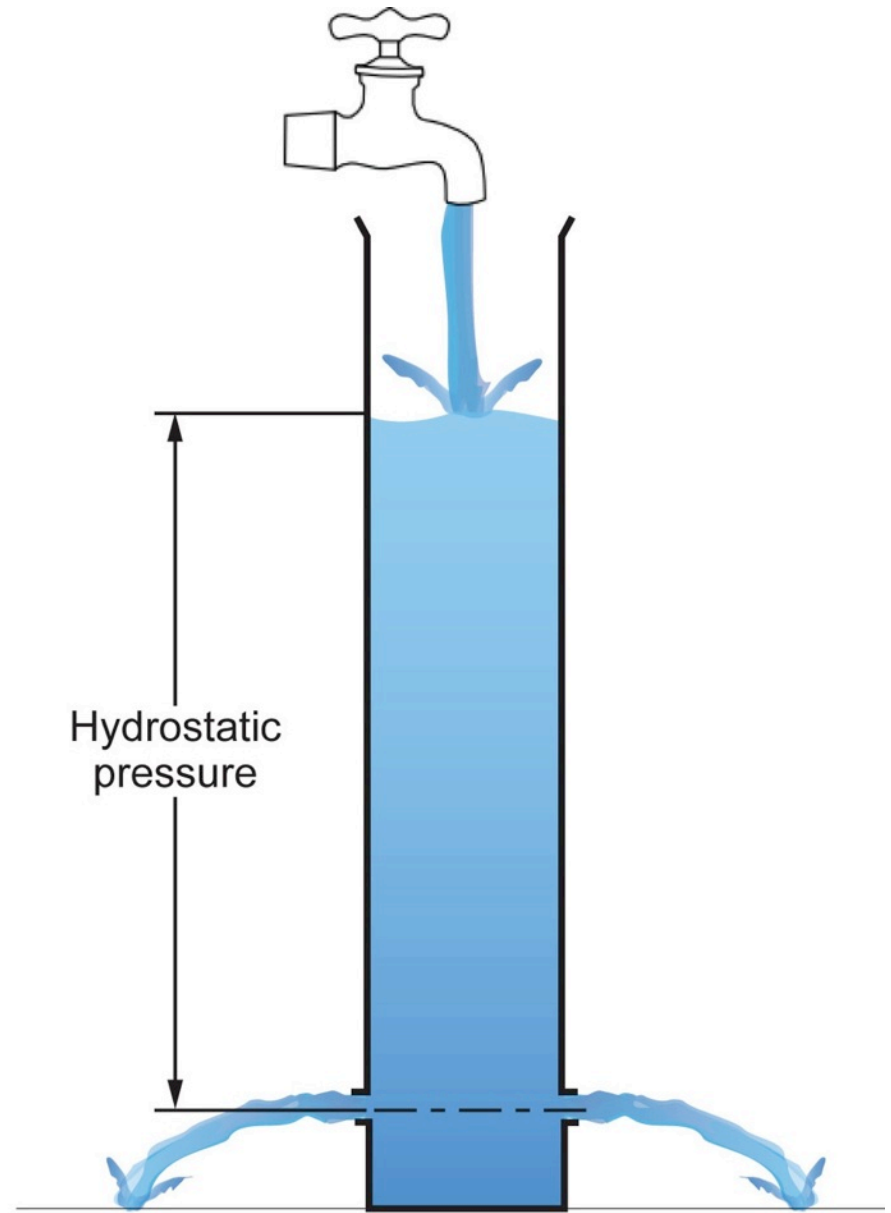
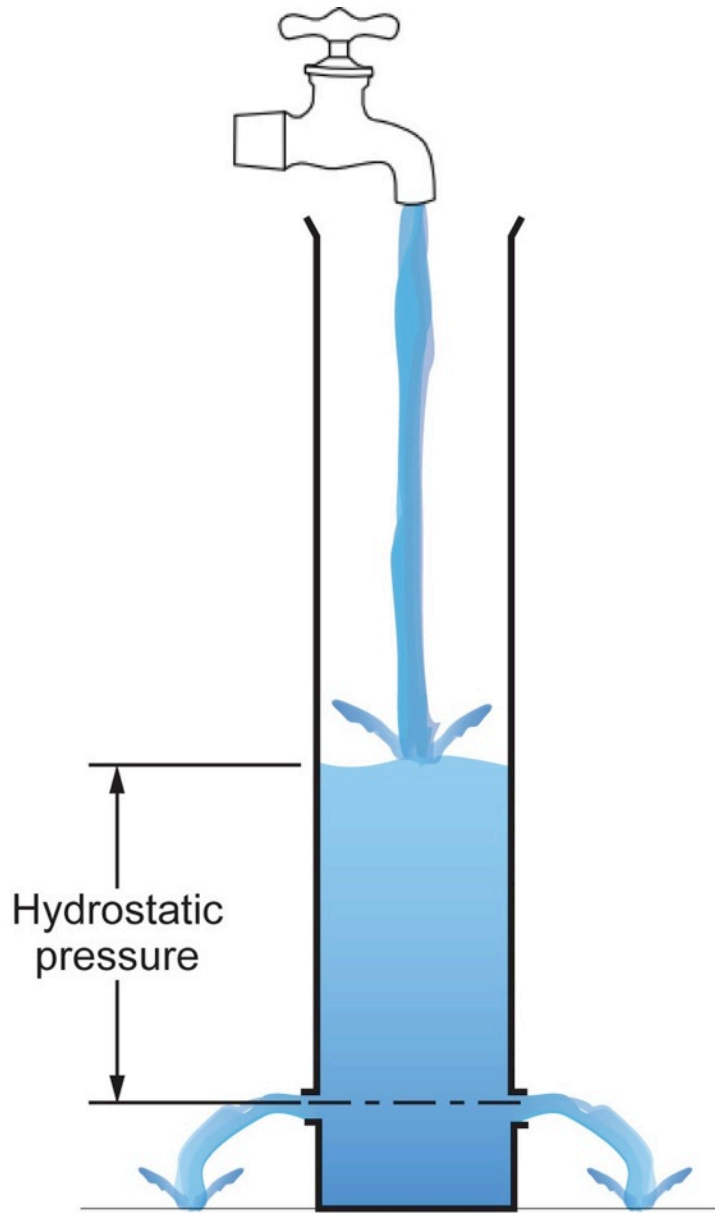


Rain



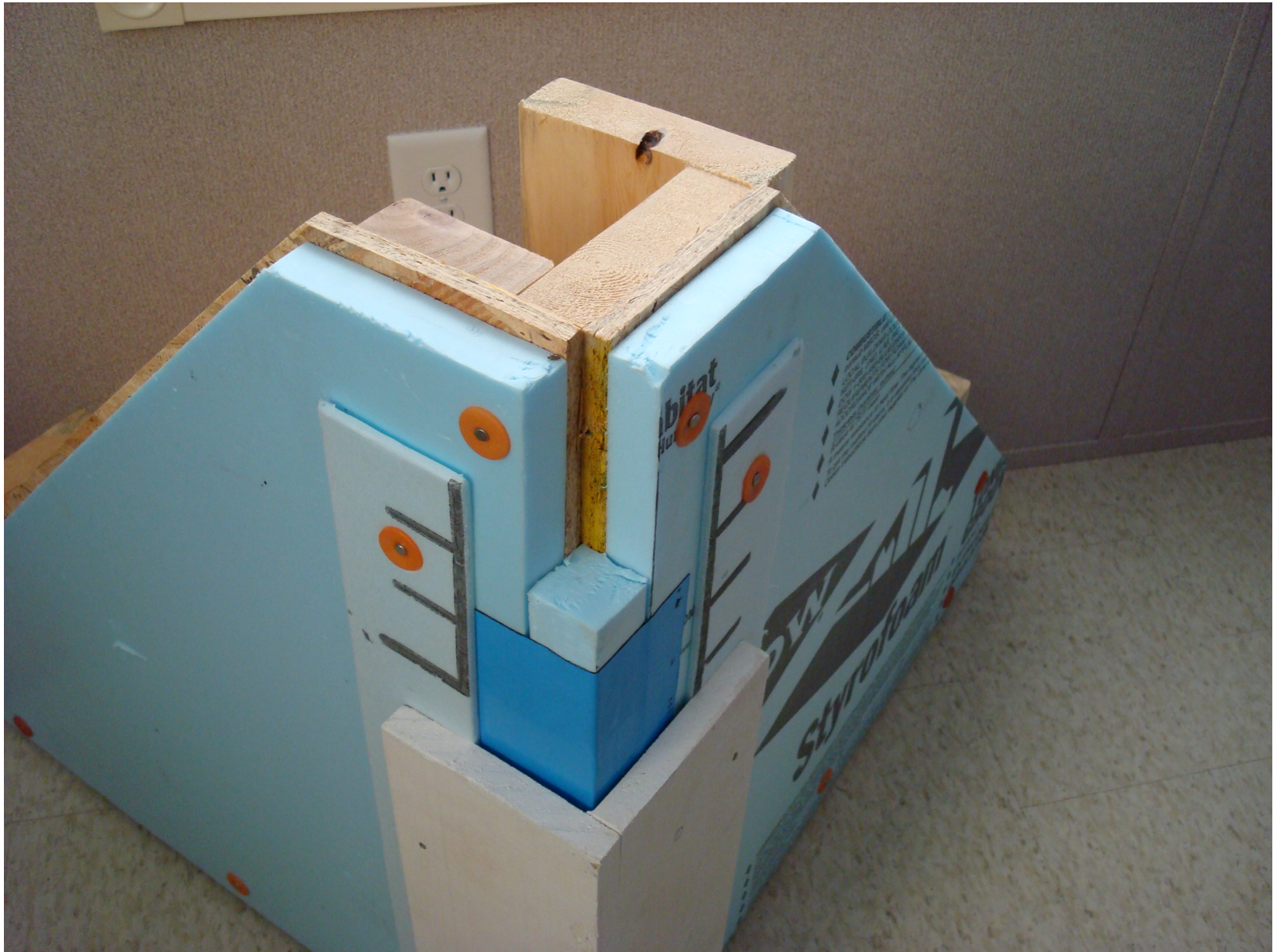




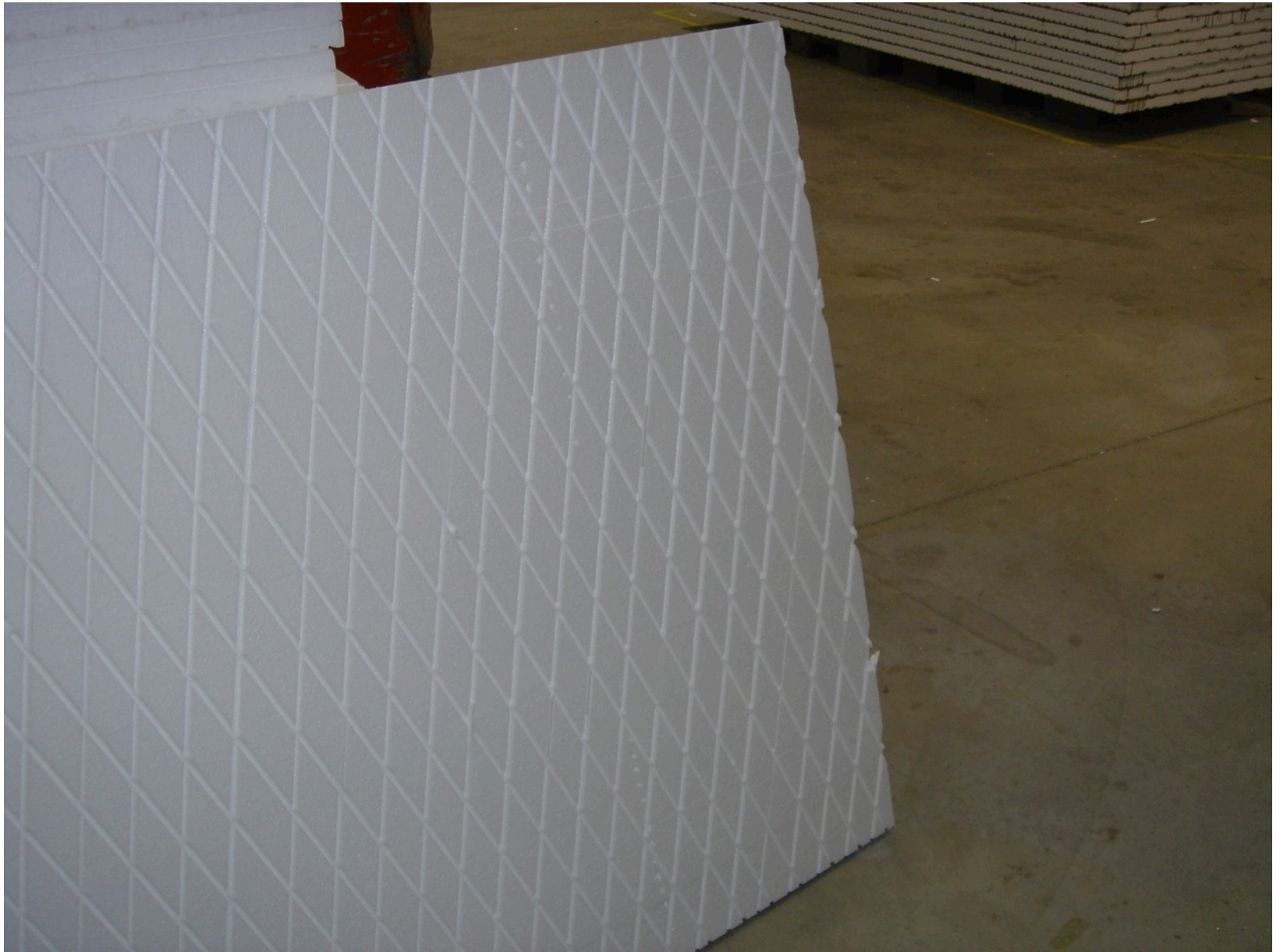




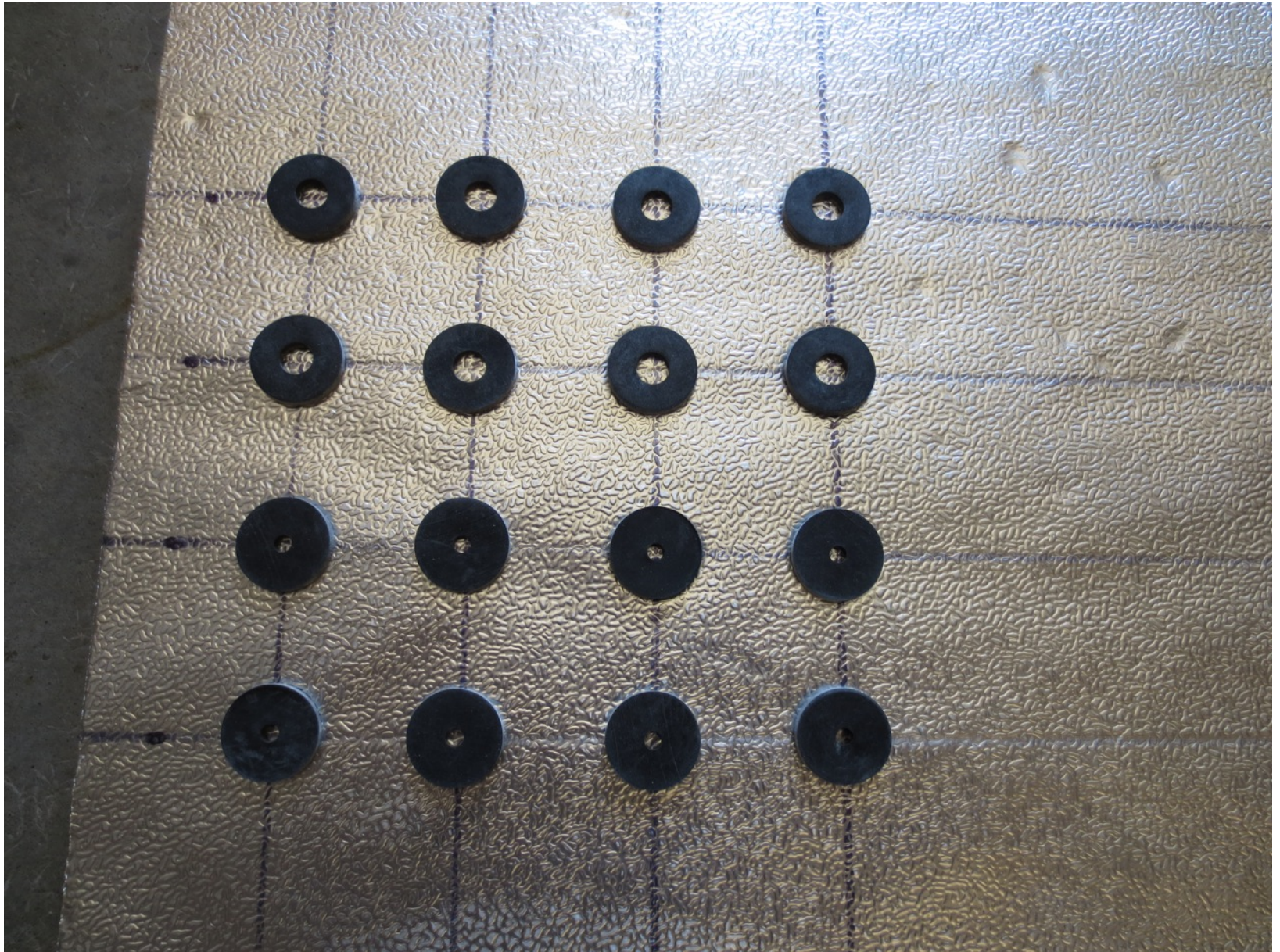




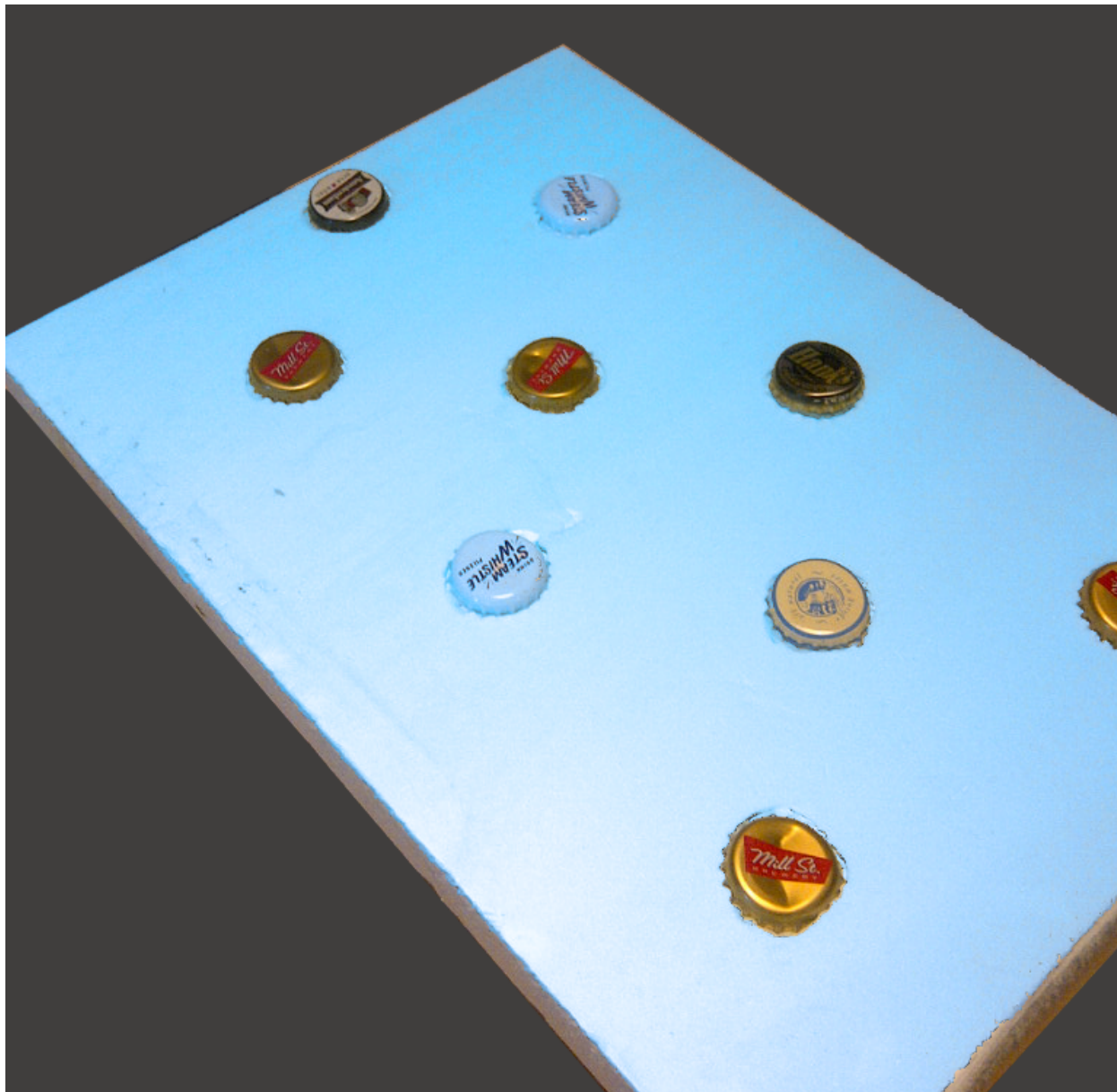




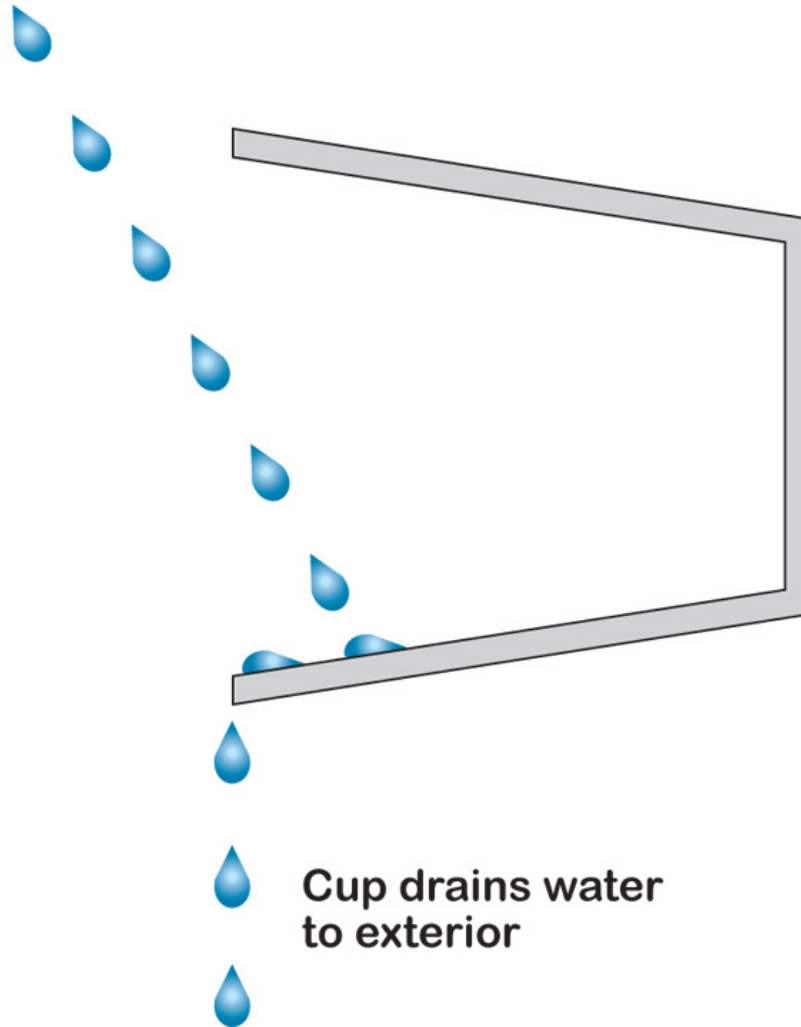
Rain Screen



Beer Screen?



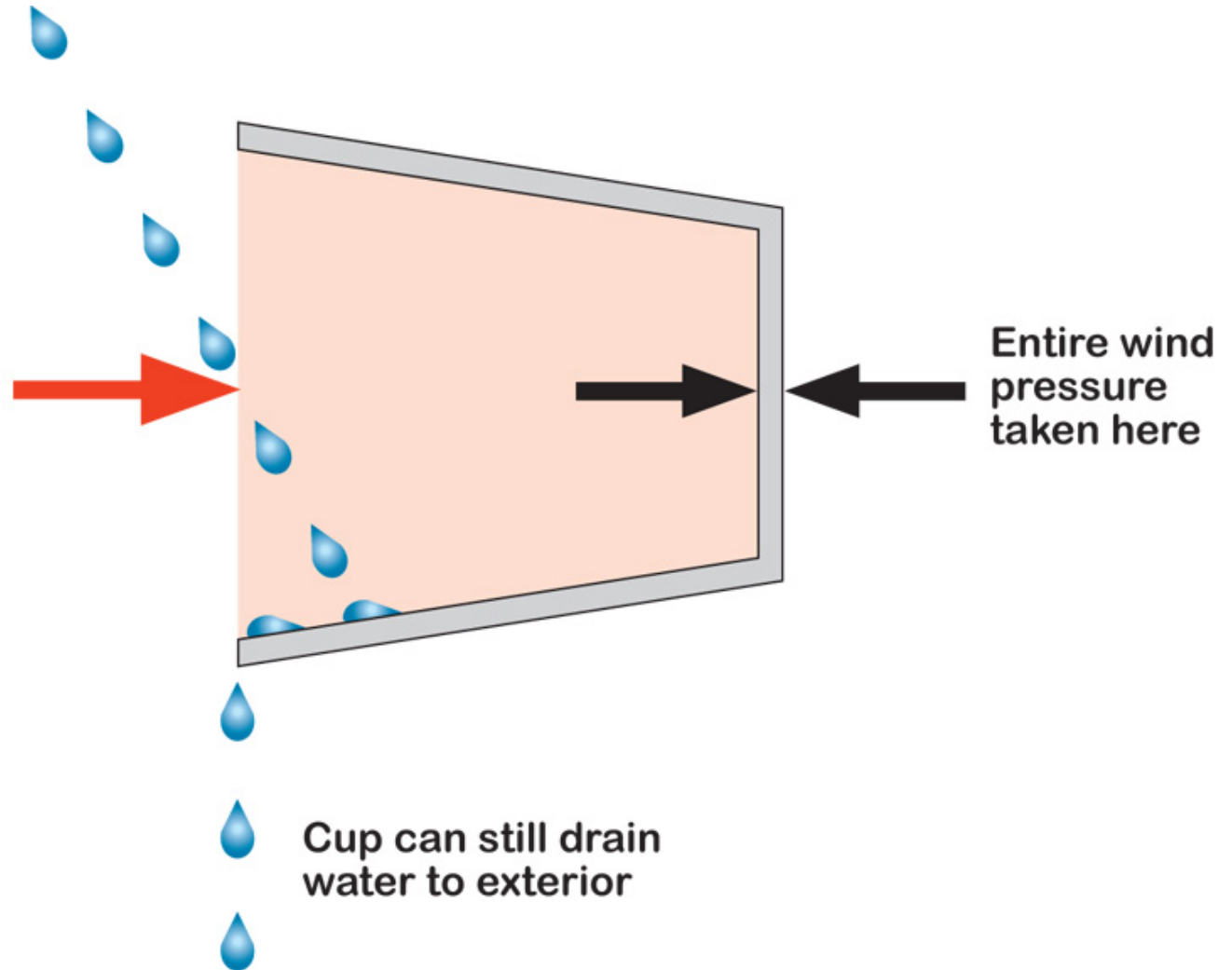
**Rain enters cup
due to momentum
("kinetic energy")**

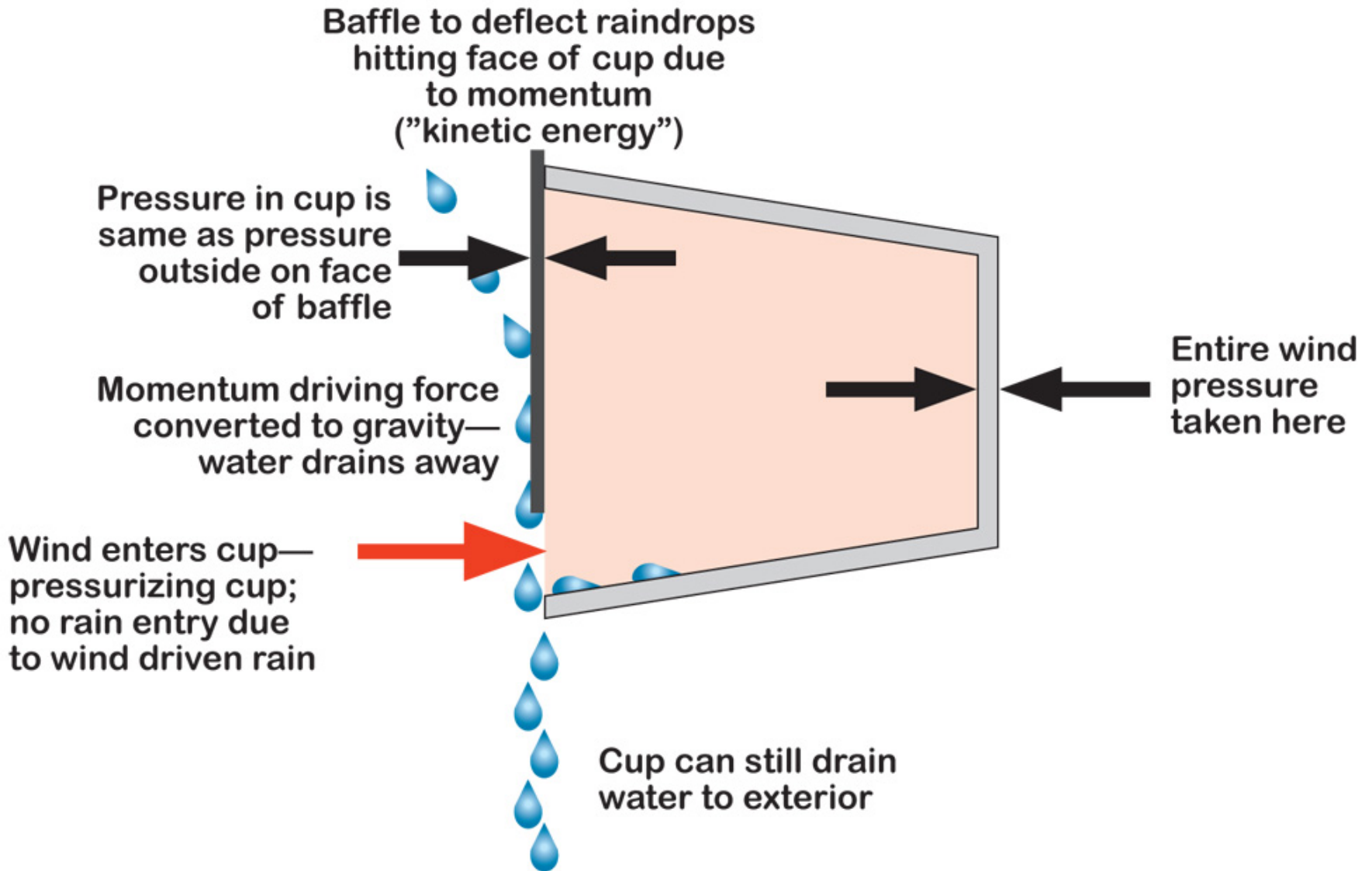


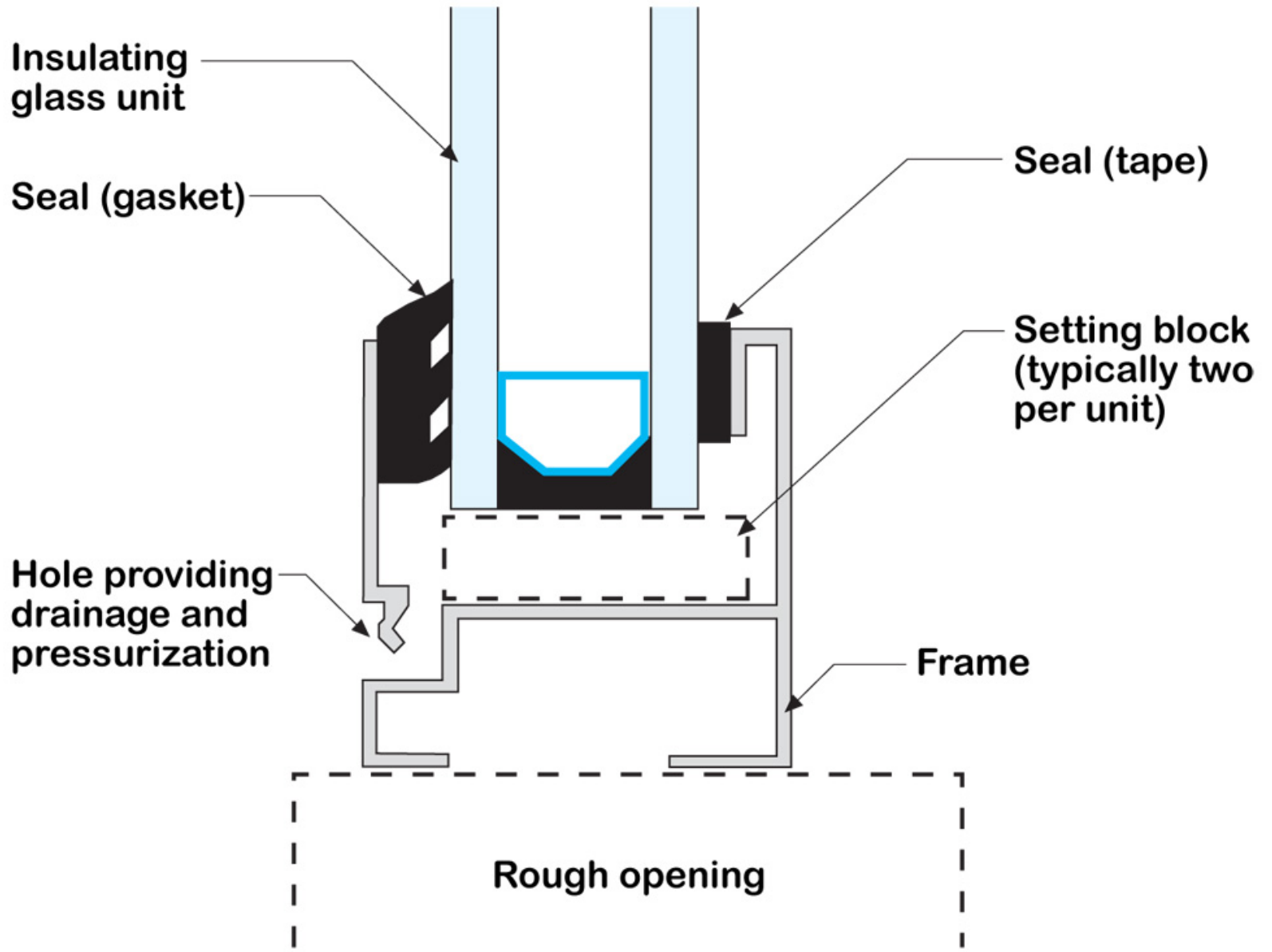
**Cup drains water
to exterior**

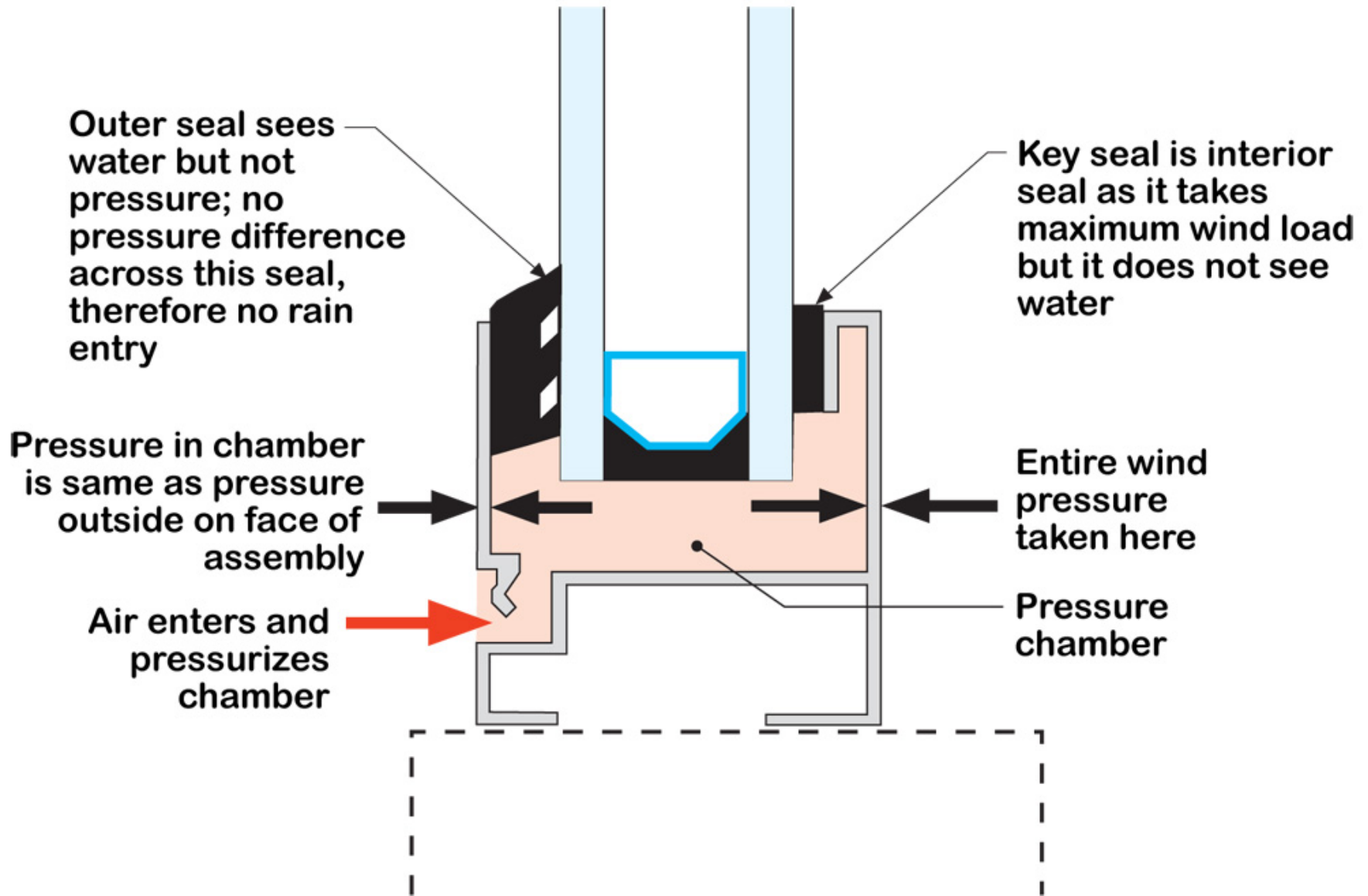
Rain enters cup due to momentum ("kinetic energy")

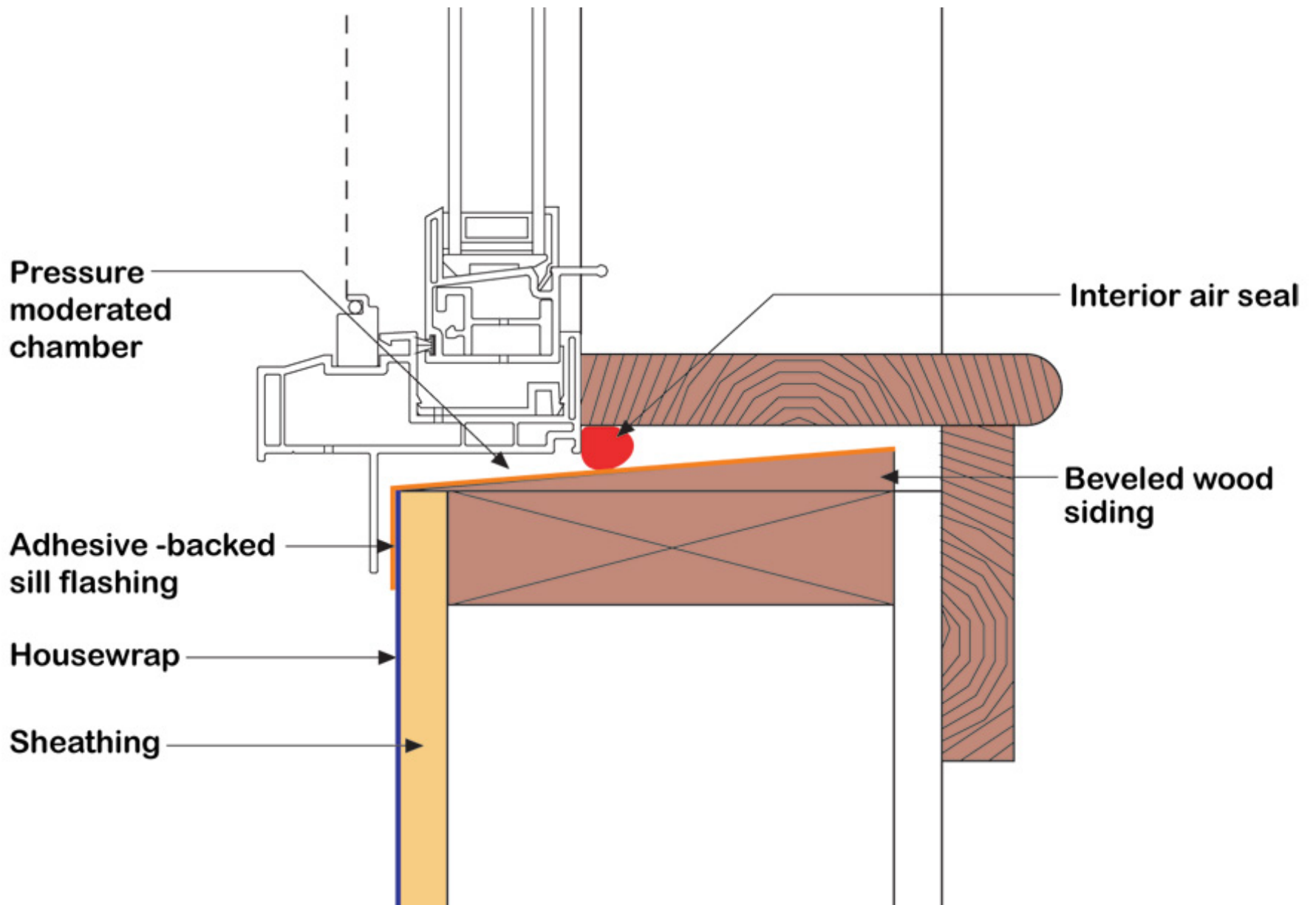
Wind enters cup—pressurizing cup; no rain entry due to wind driven rain









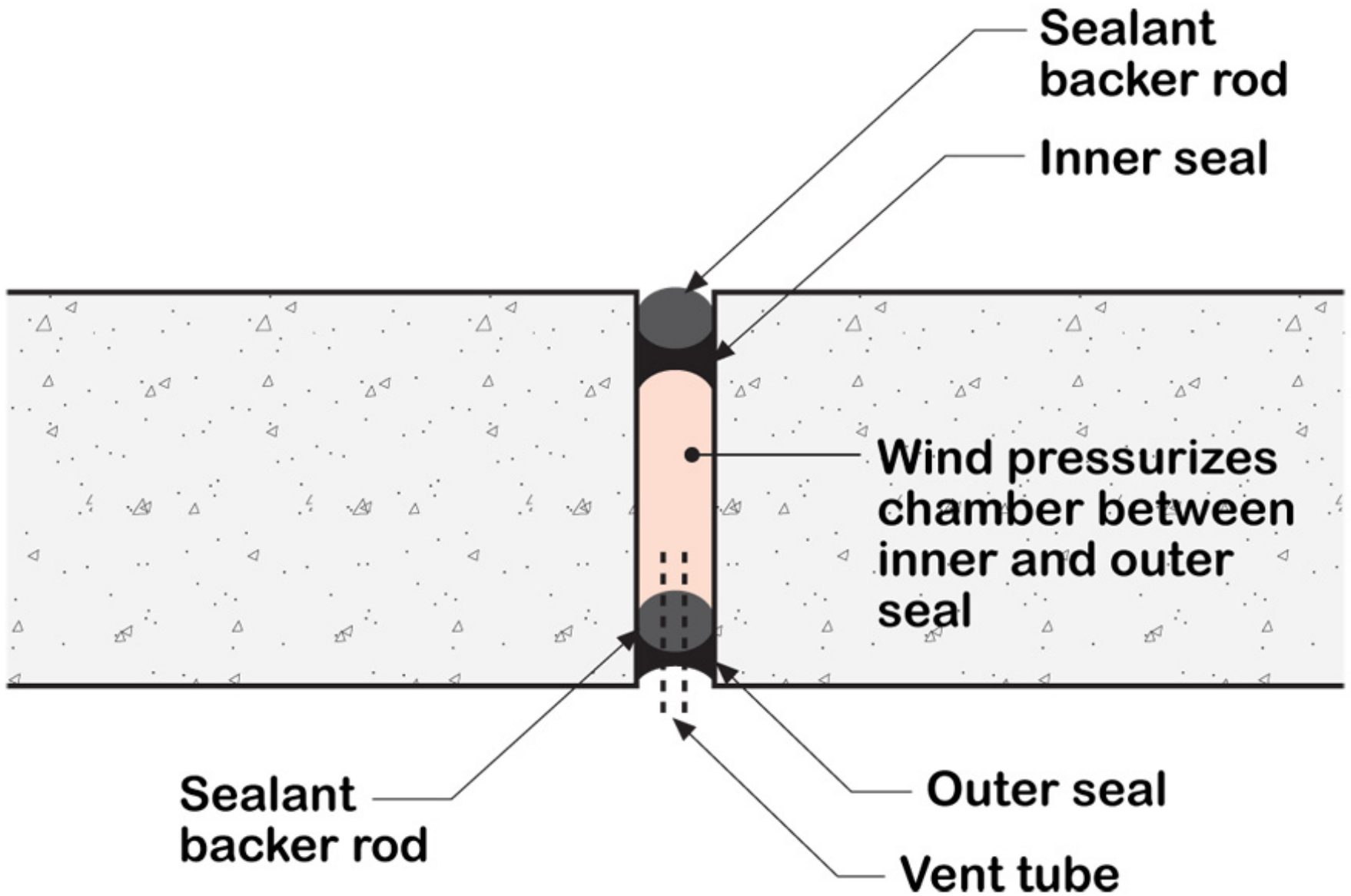


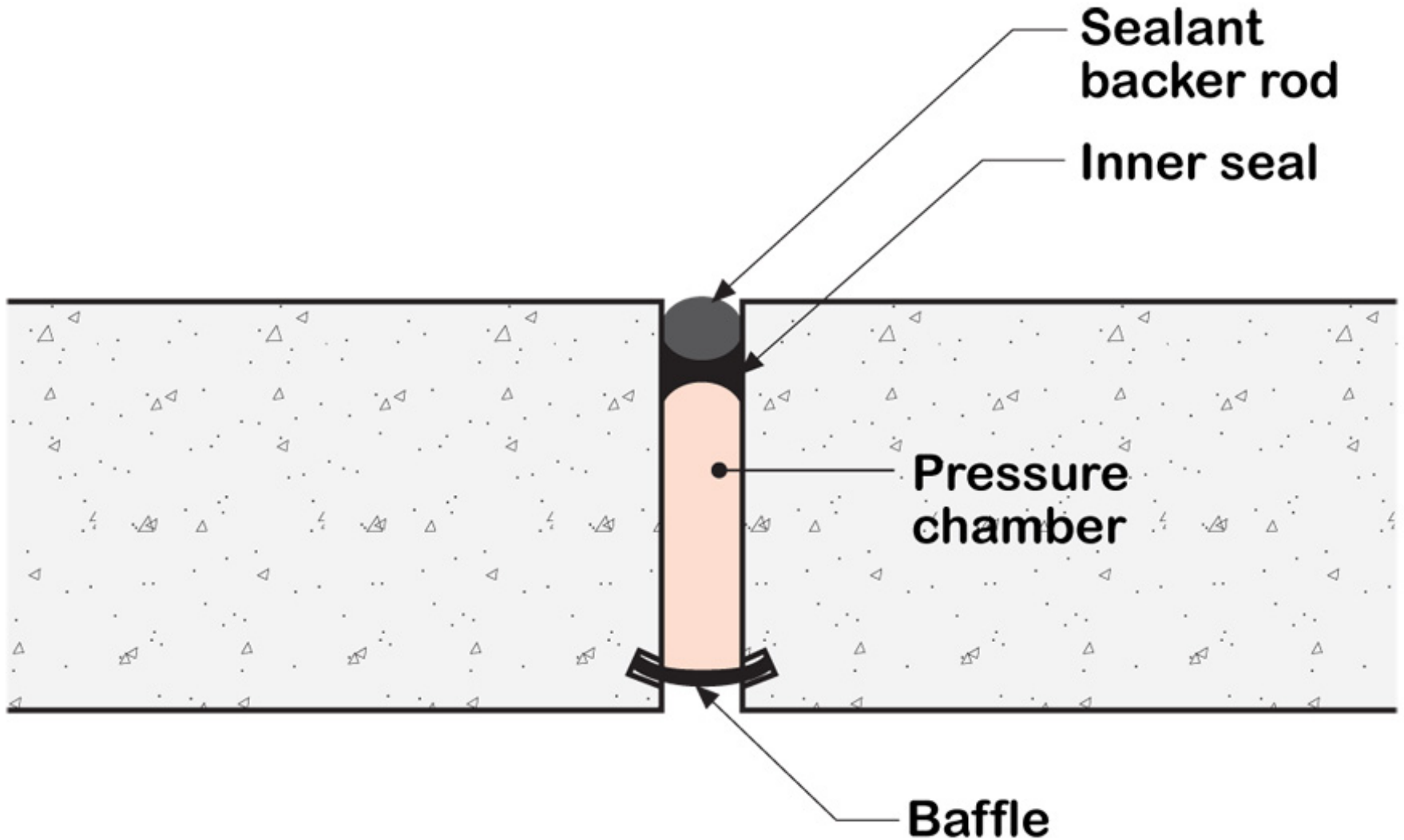


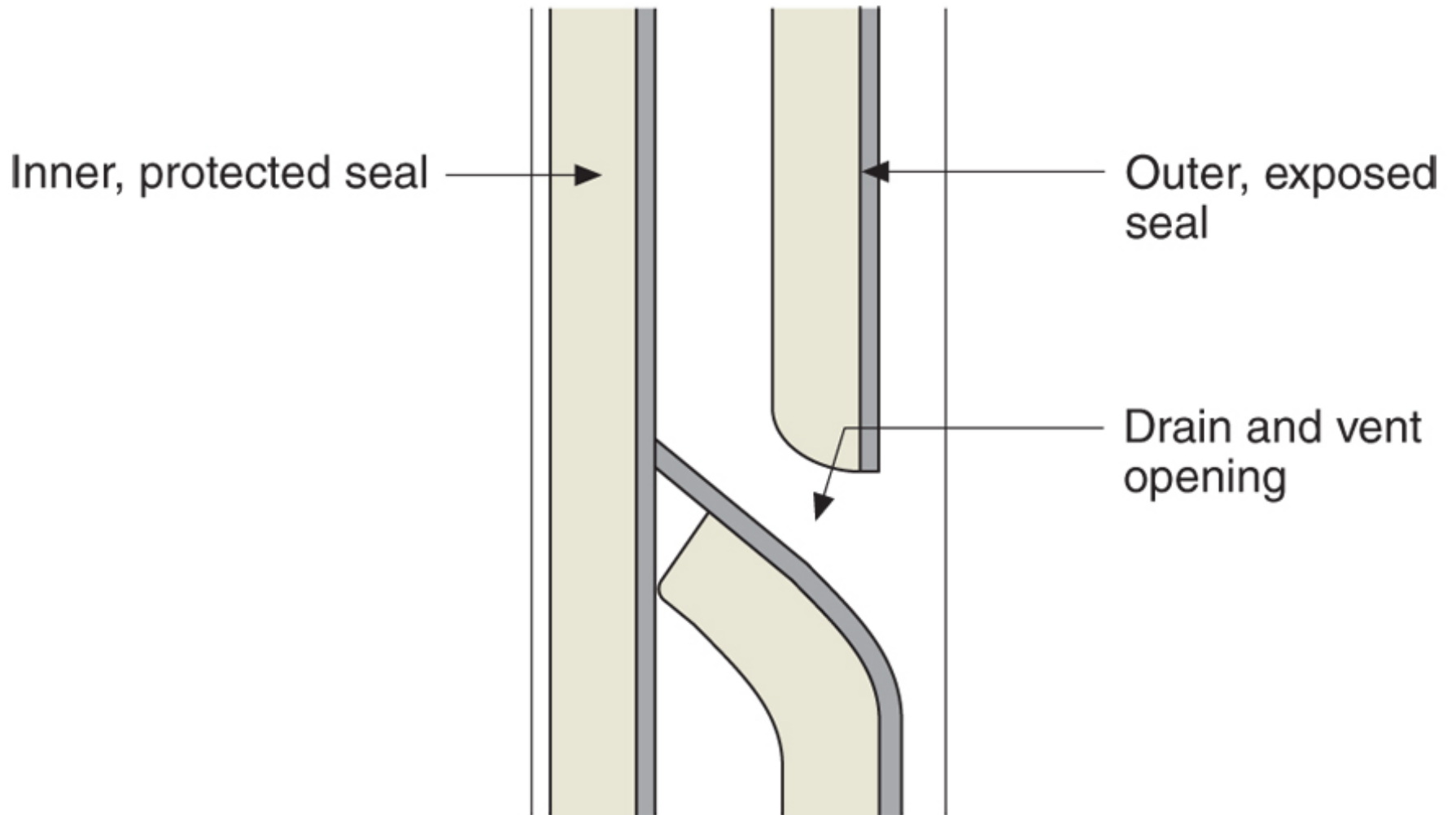


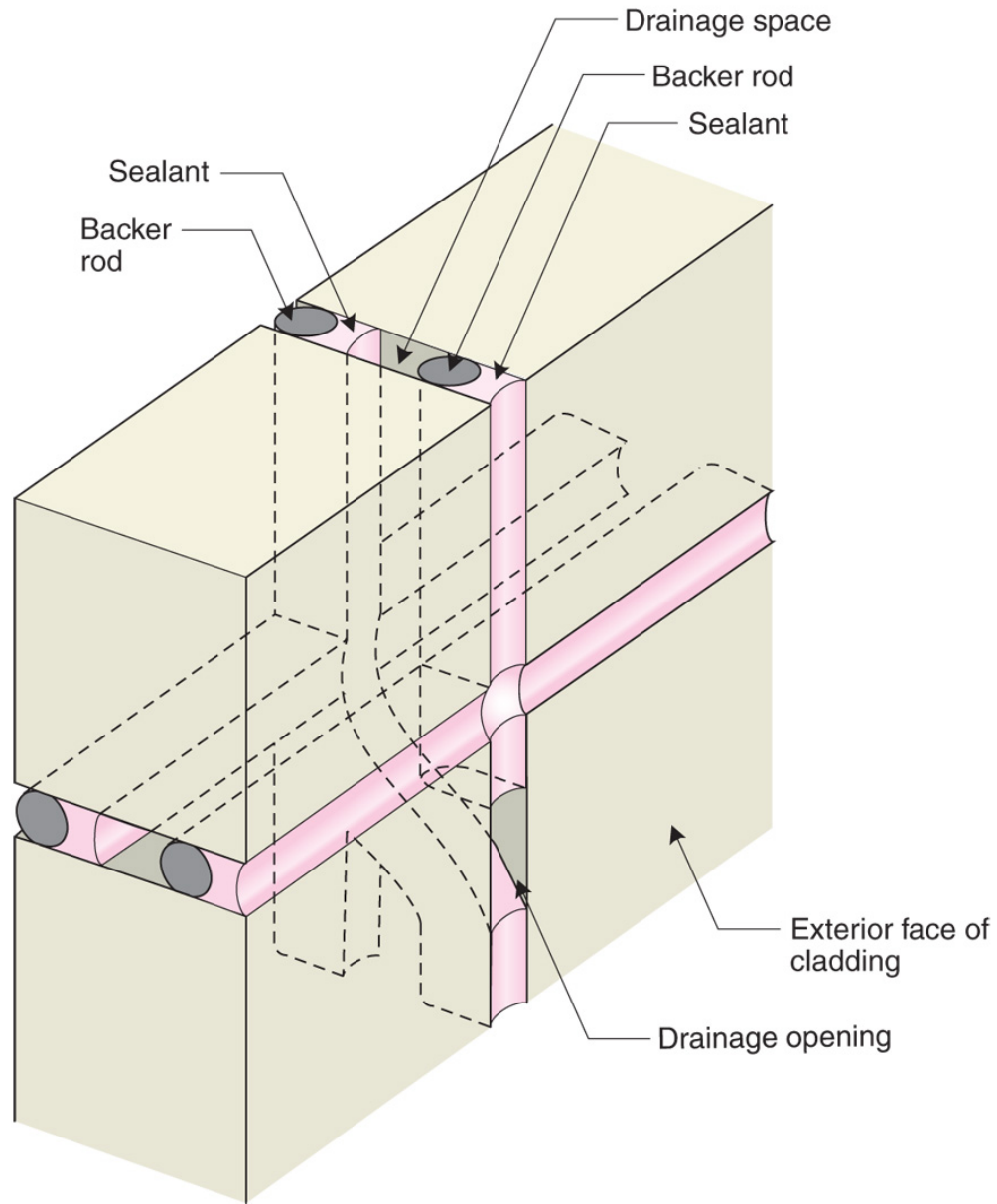


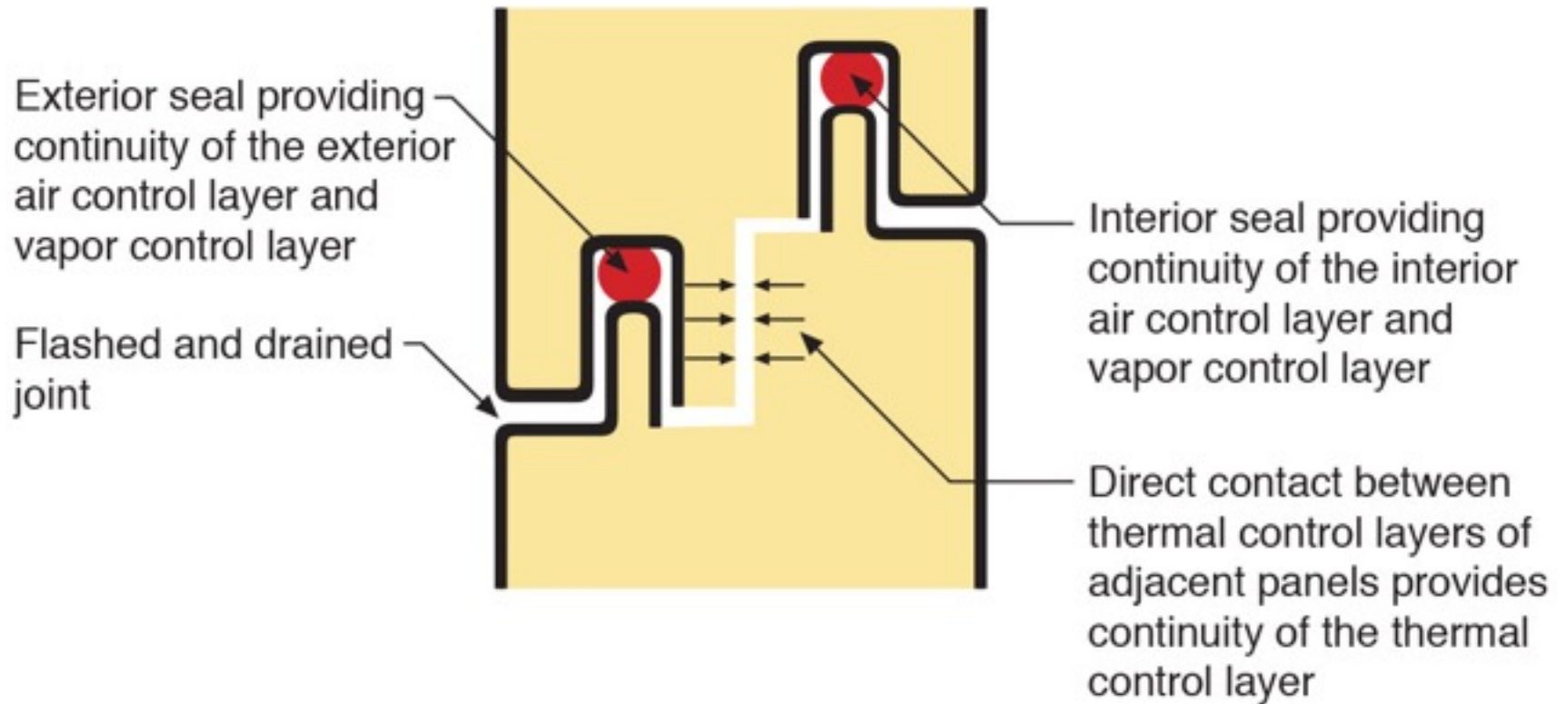












Standing seam provides continuity of the water control layer

Direct contact between thermal control layers of adjacent panels provides continuity of the thermal control layer

Exterior seal providing continuity of the exterior air control layer and vapor control layer

Interior seal providing continuity of the interior air control layer and vapor control layer

