

Joseph Lstiburek, Ph.D., P.Eng, ASHRAE Fellow

Building Science

Adventures In Building Science

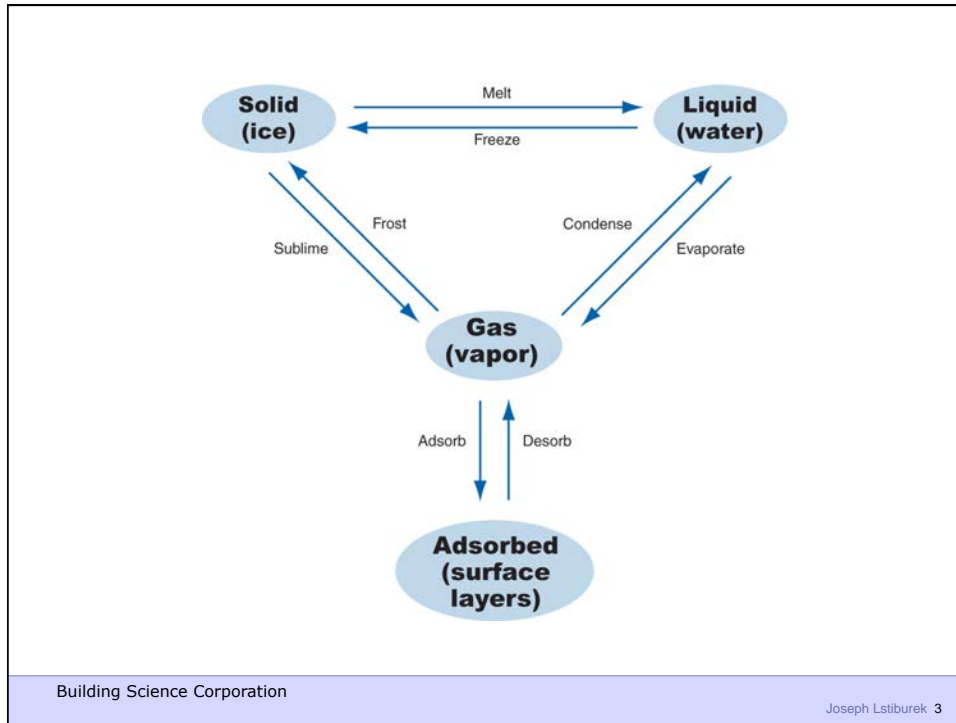
www.buildingscience.com

“It isn’t what we don’t know that gives us trouble, it’s what we know that ain’t so”

Will Rogers

“There are known knowns. These are things we know. There are known unknowns. There are things that we know we don’t know. But there are also unknown unknowns. There are things we don’t know we don’t know.

Donald Rumsfeld



Moisture transport processes in building materials and components

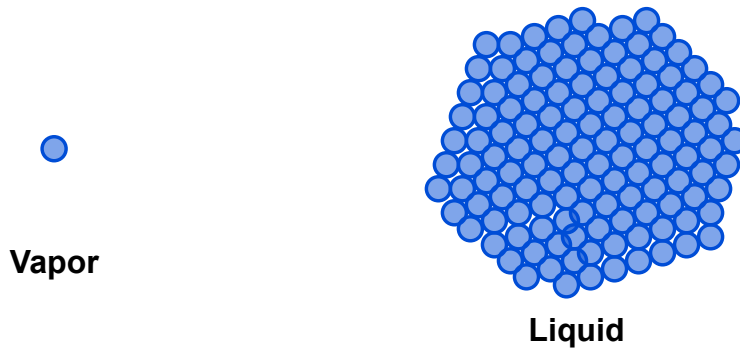
Transport Process	Phase	Potential (Difference)
Gas diffusion	Vapor	Vapor pressure
Liquid diffusion	Liquid	Concentration
Surface diffusion	Adsorbate	Concentration
Thermal diffusion	Vapor and liquid	Temperature
Capillary flow	Liquid	Suction pressure
Convective flow	Vapor	Air pressure
Gravitational flow	Liquid	Height
Poiseuille flow	Liquid	Liquid pressure

From Kumaran, M. K.; Chapter 1, Moisture in Buildings, ASTM; 1994

Building Science Corporation Joseph Lstiburek 4

Water

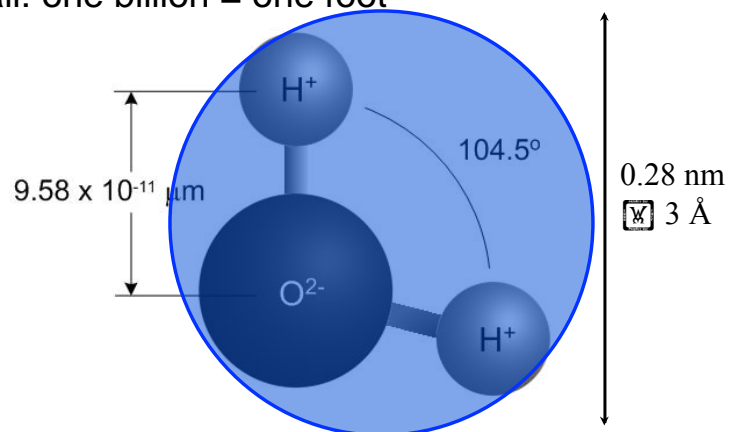
- Vapor is a single molecule
- Liquid is molecular clumps, 75 or more



Building Science Corporation

The Water Molecule

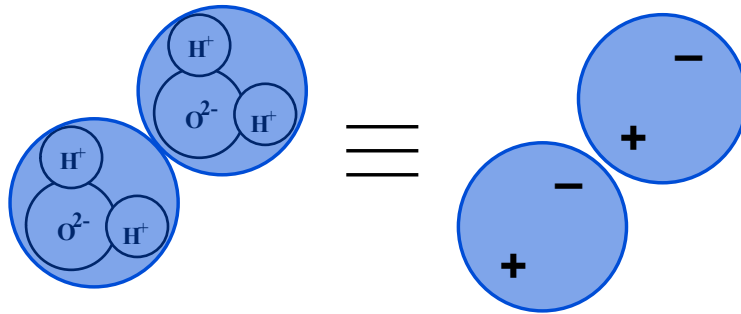
- Asymmetrical = polar
- Small: one billion = one foot



Building Science Corporation

The Polar Molecule

- Hydrogen end is “more” positive
- Oxygen end is “more” negative

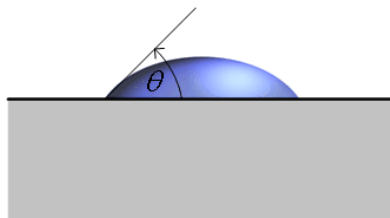


Building Science Corporation

Surface Tension: Wettable

Water attracted to surface more than self

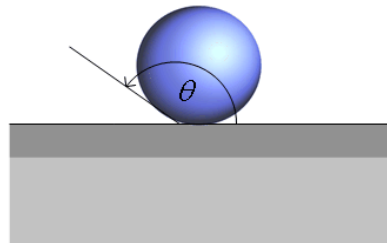
$$\theta < 90^\circ$$



normal material:
“wetable”

Water attracted to self more than surface

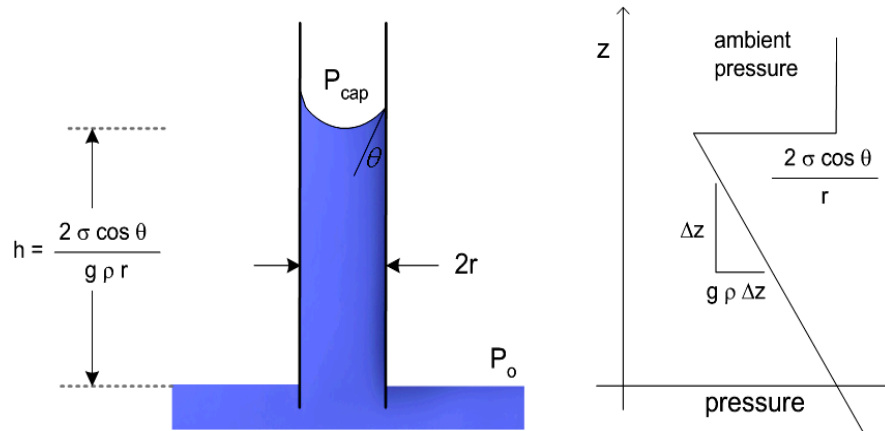
$$\theta > 90^\circ$$



hydrophobically treated:
“non-wetable”

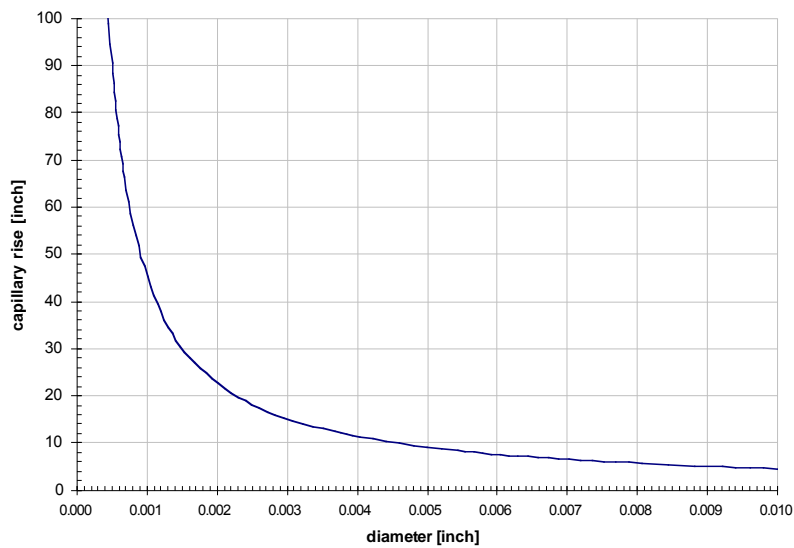
Building Science Corporation

Calculating capillary rise

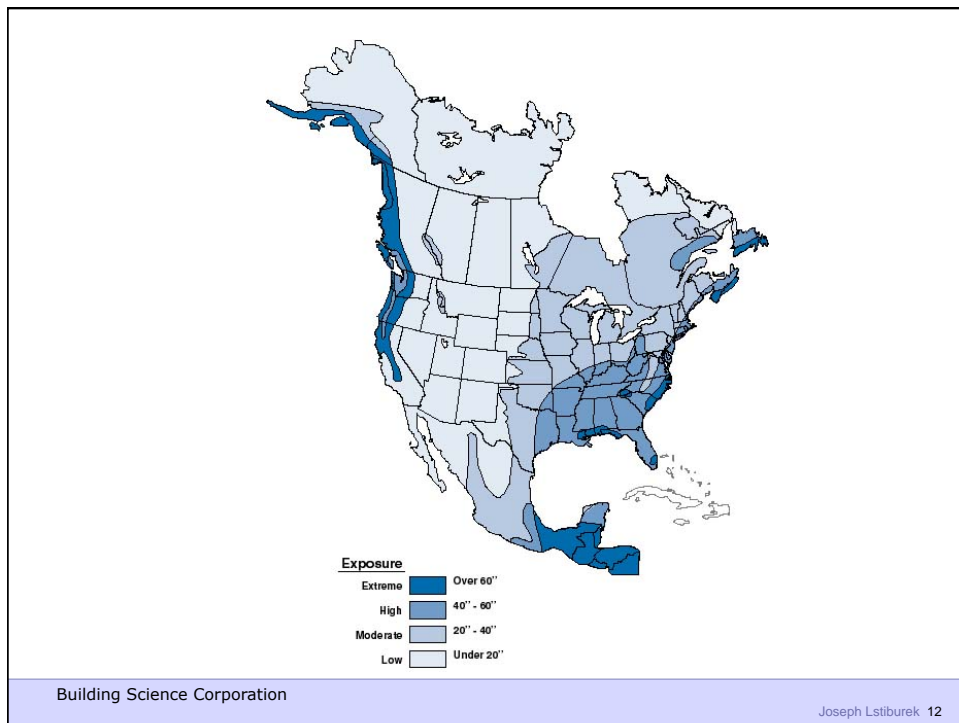
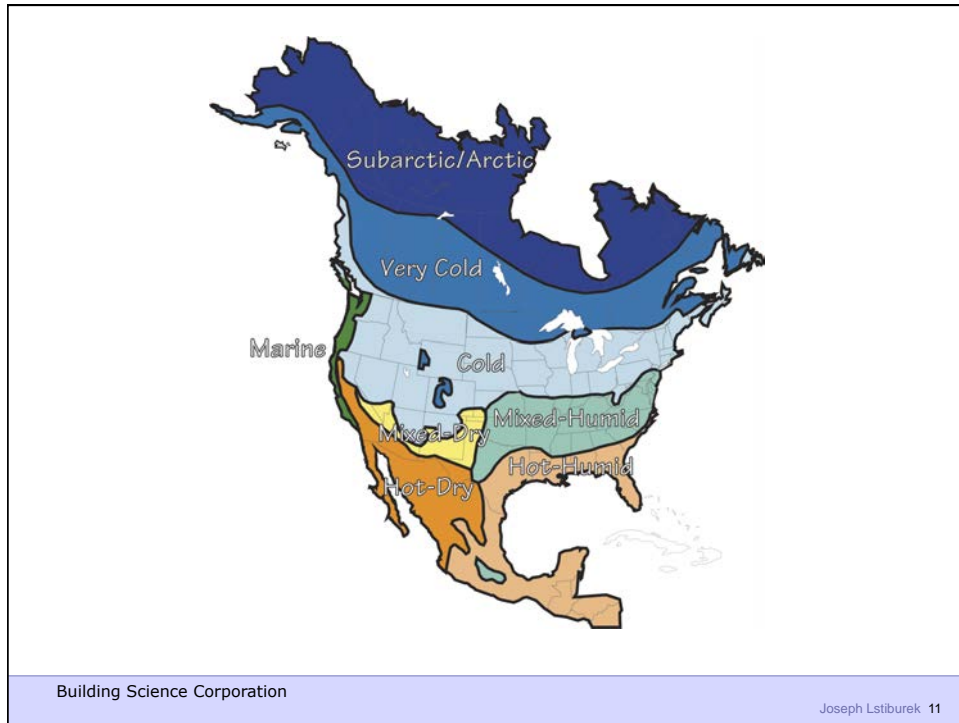


Building Science Corporation

Capillary rise versus diameter



Building Science Corporation



Don't Do Stupid Things

Building Science Corporation

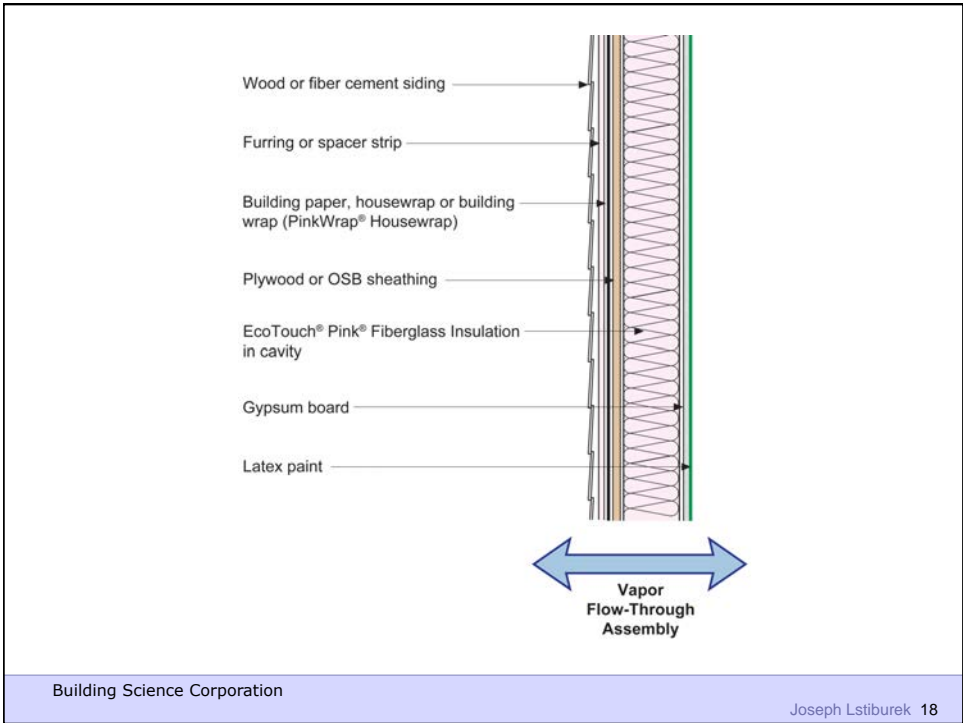
Joseph Lstiburek 13

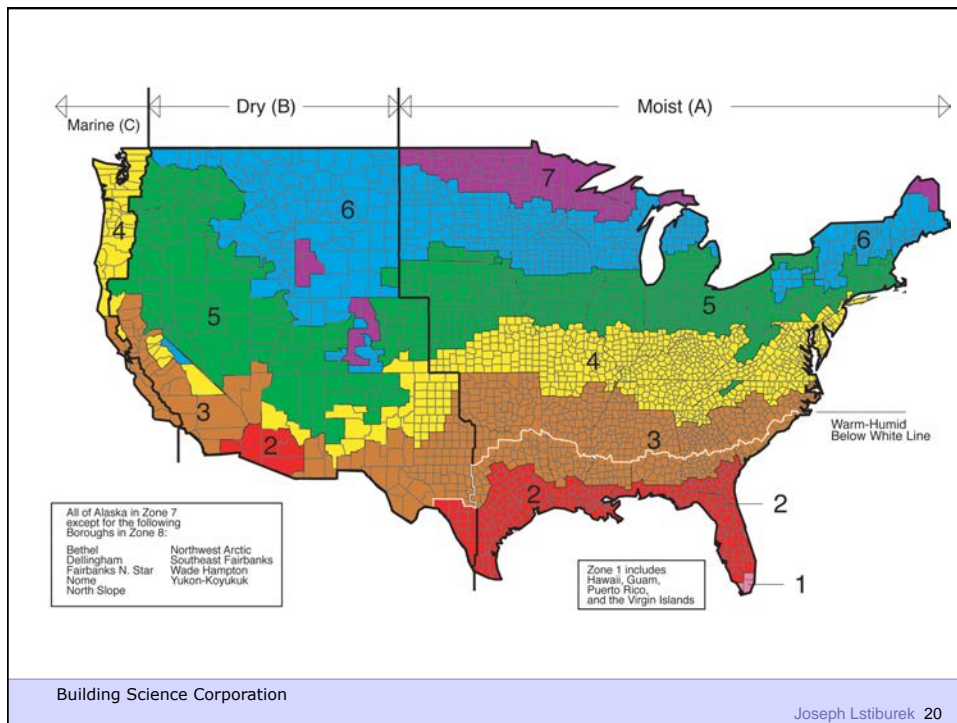
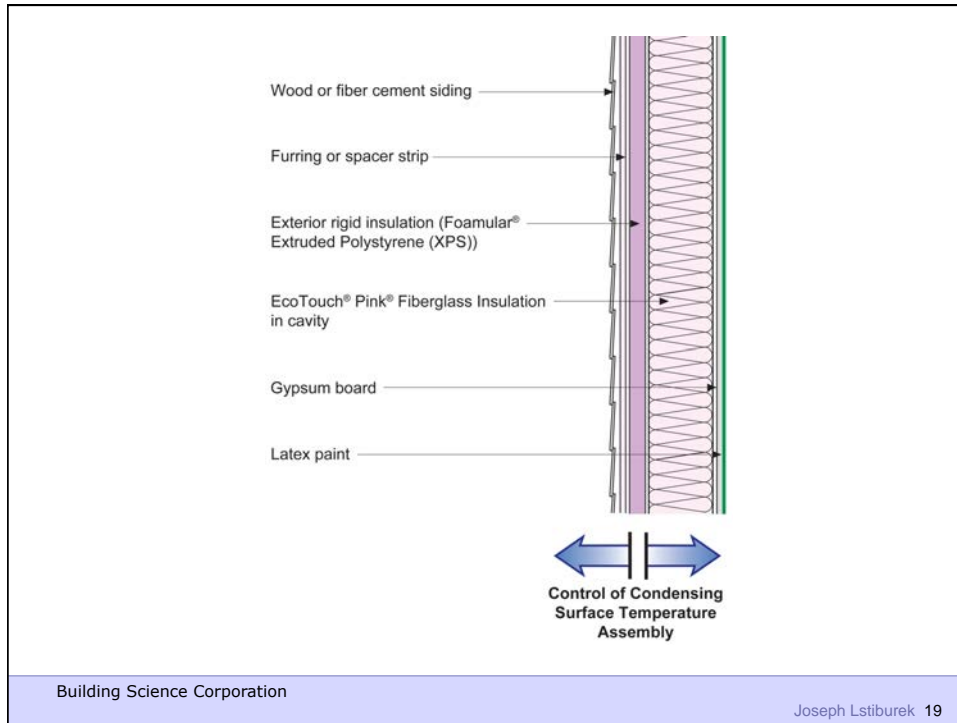


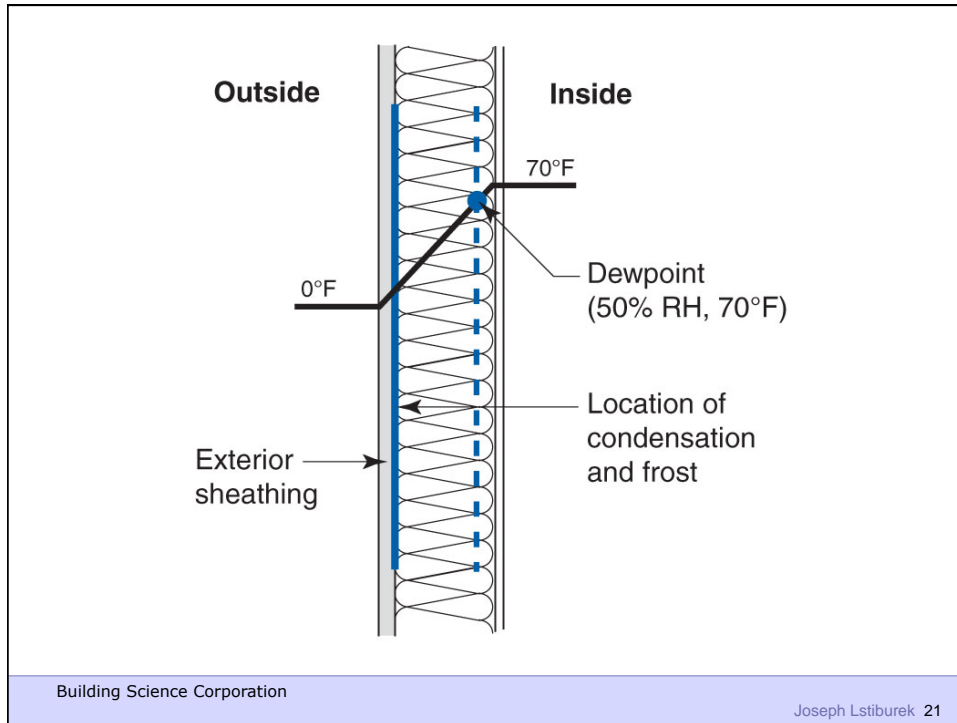
Building Science Corporation

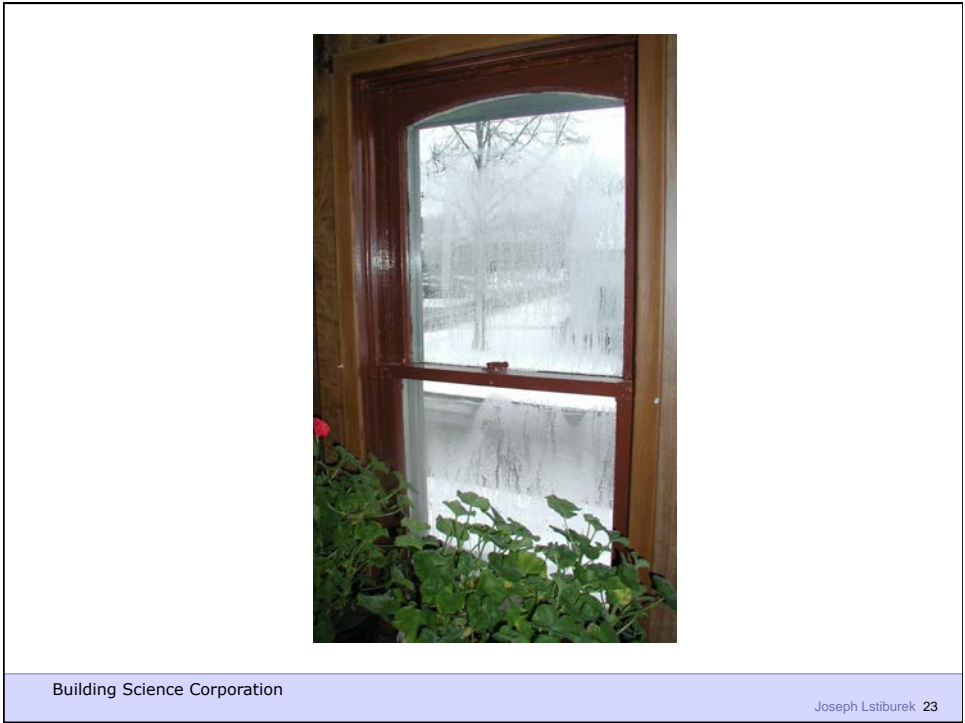
Joseph Lstiburek 14





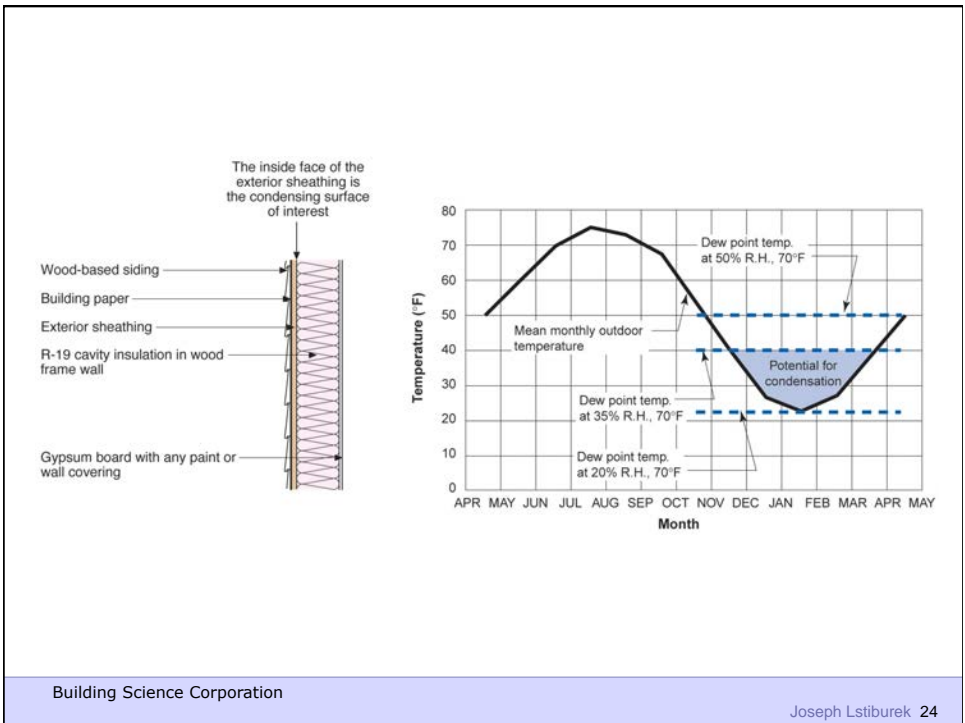






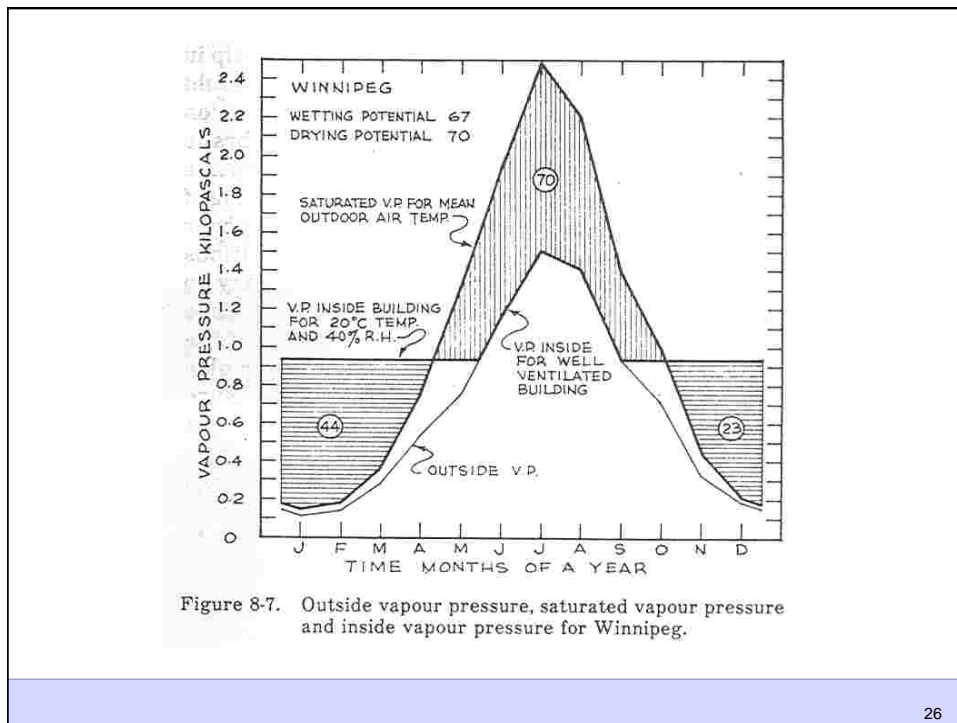
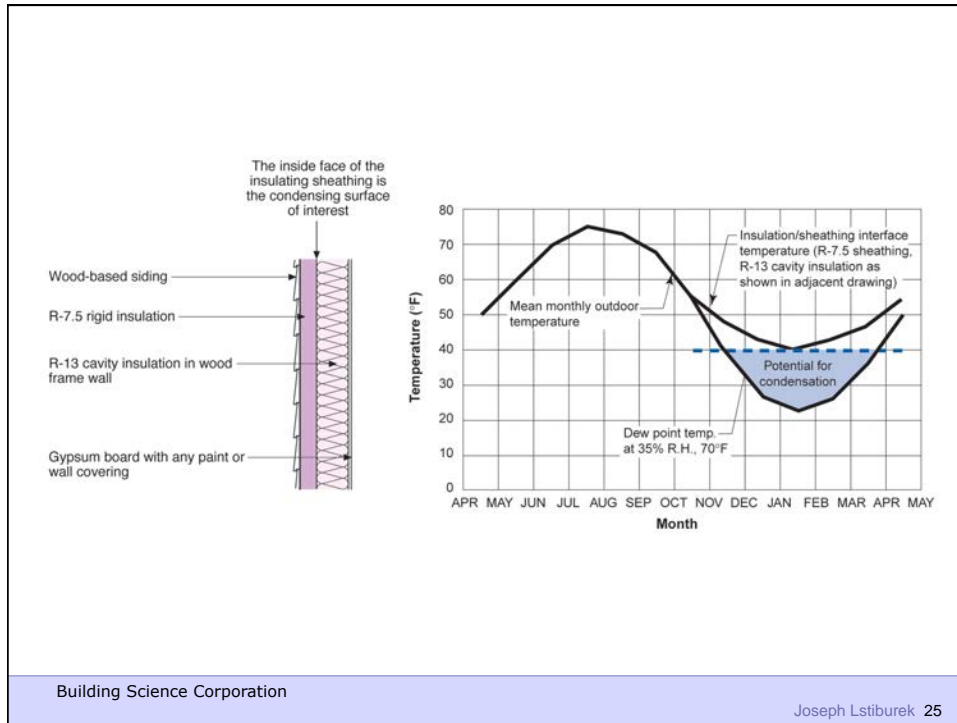
Building Science Corporation

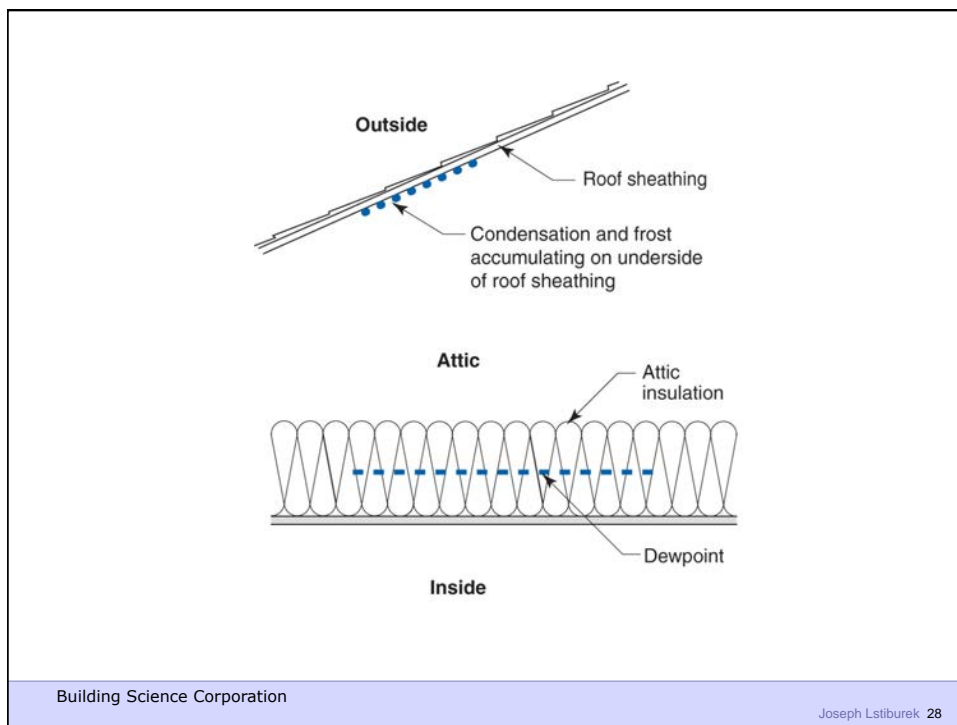
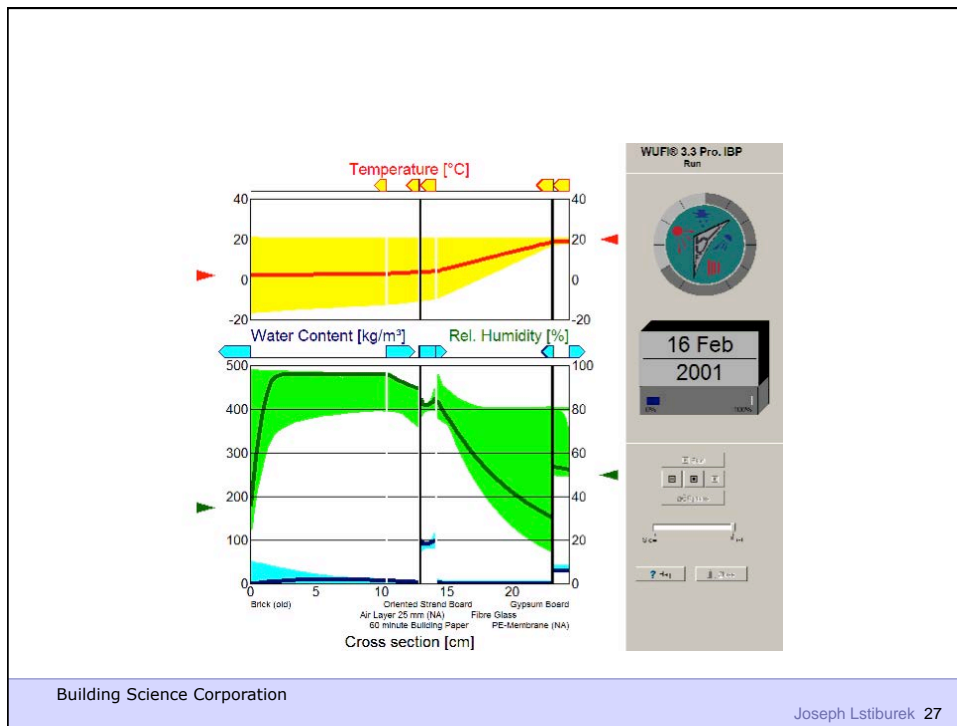
Joseph Lstiburek 23



Building Science Corporation

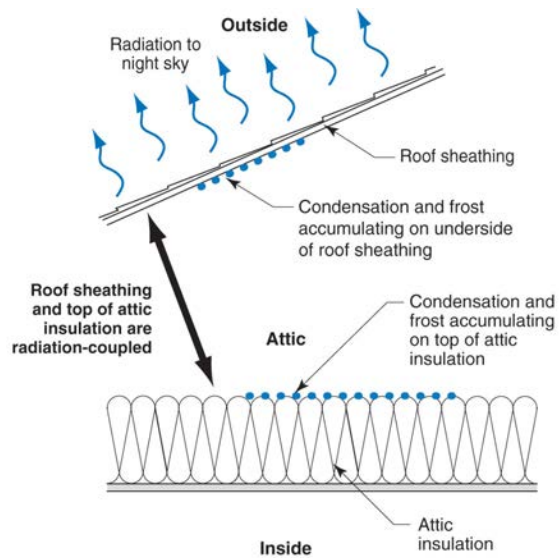
Joseph Lstiburek 24







Building Science Corporation



Building Science Corporation



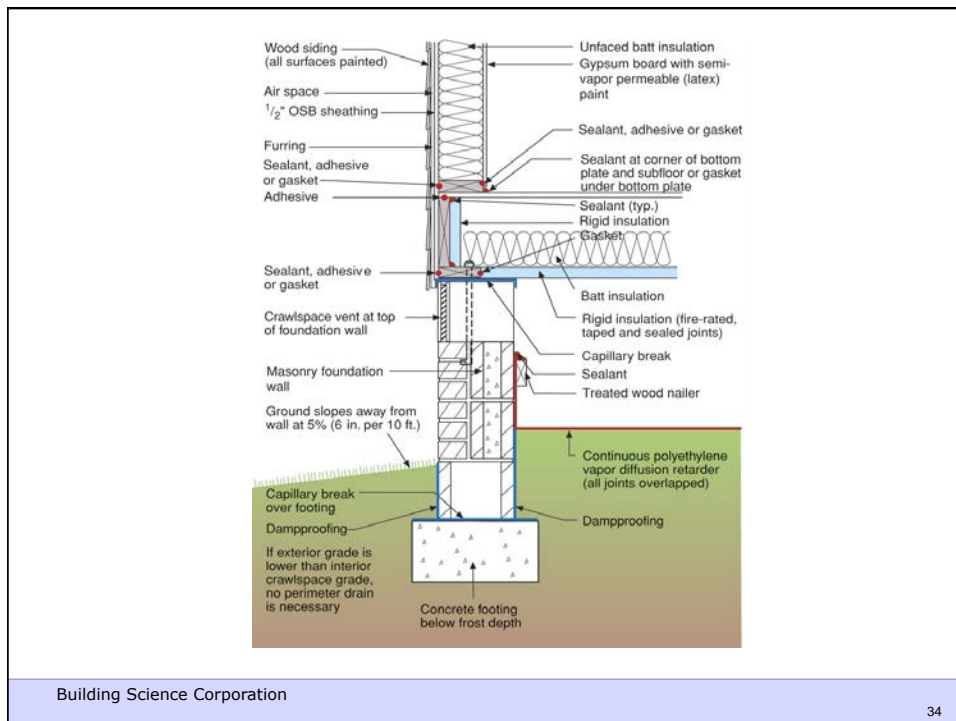
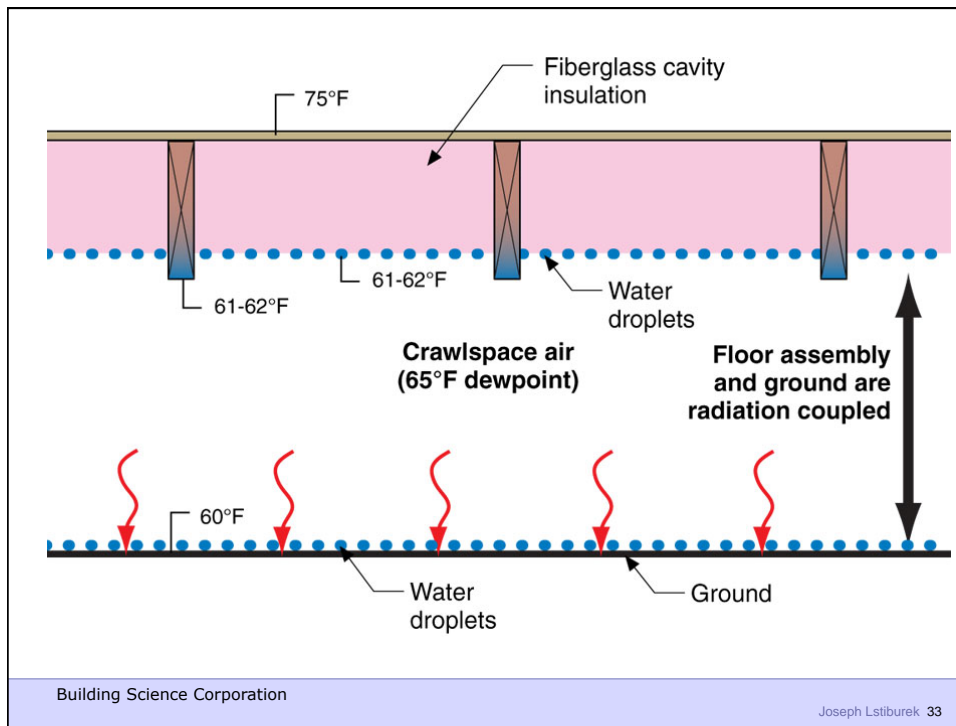
Building Science Corporation

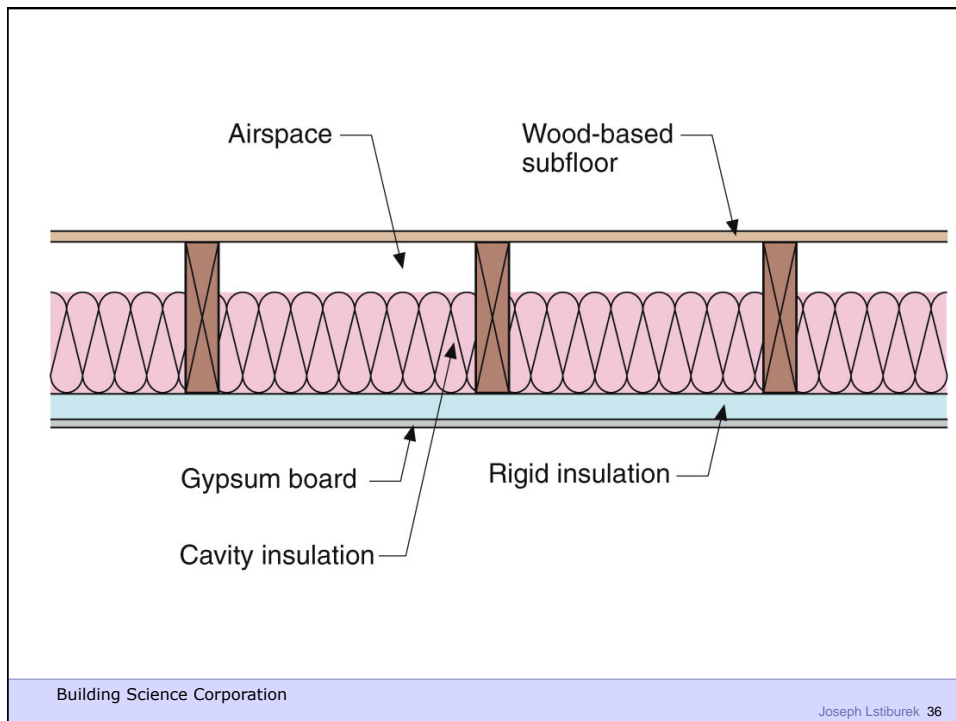
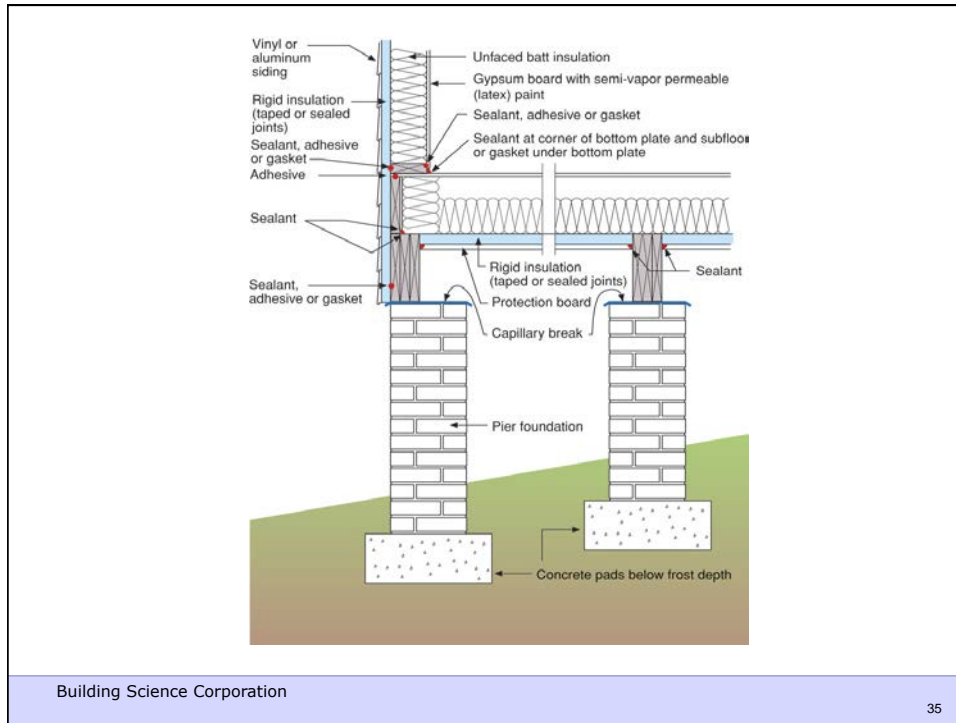
Joseph Lstiburek 31

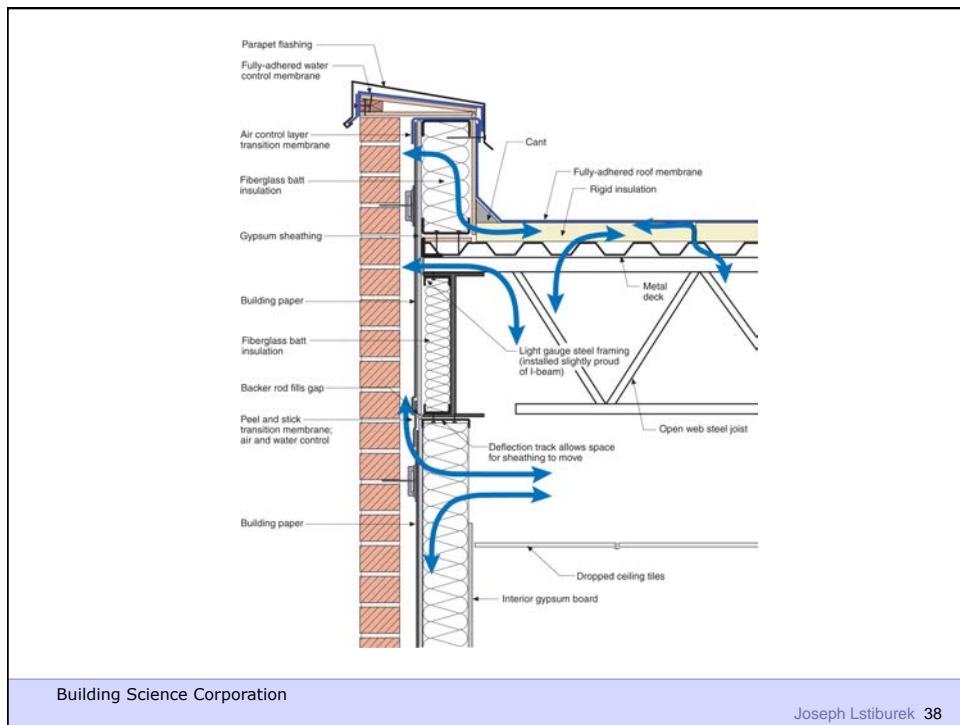
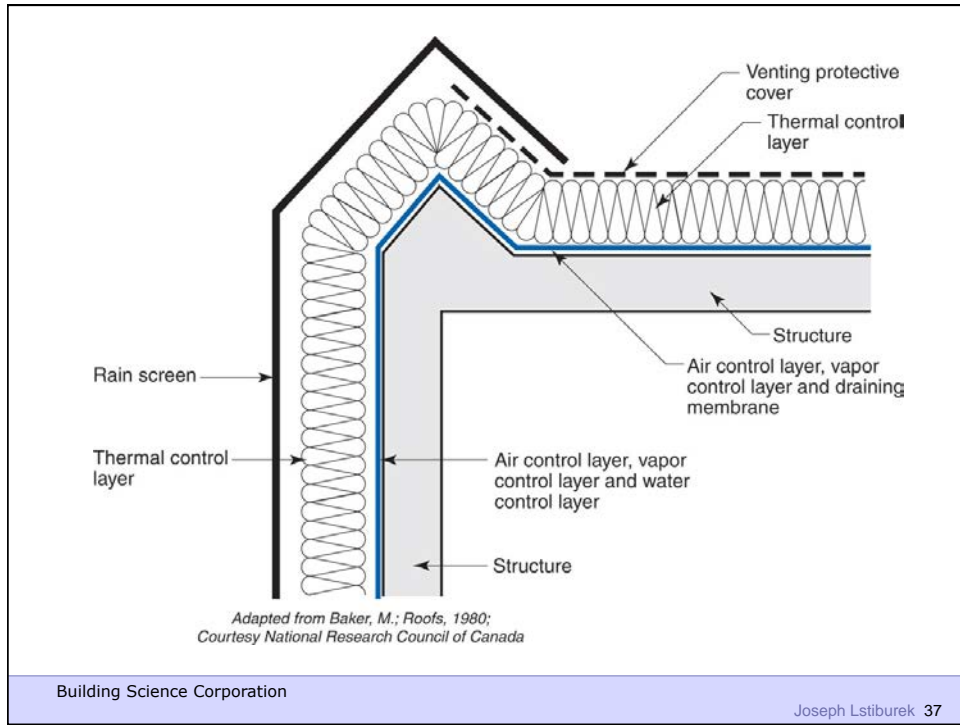


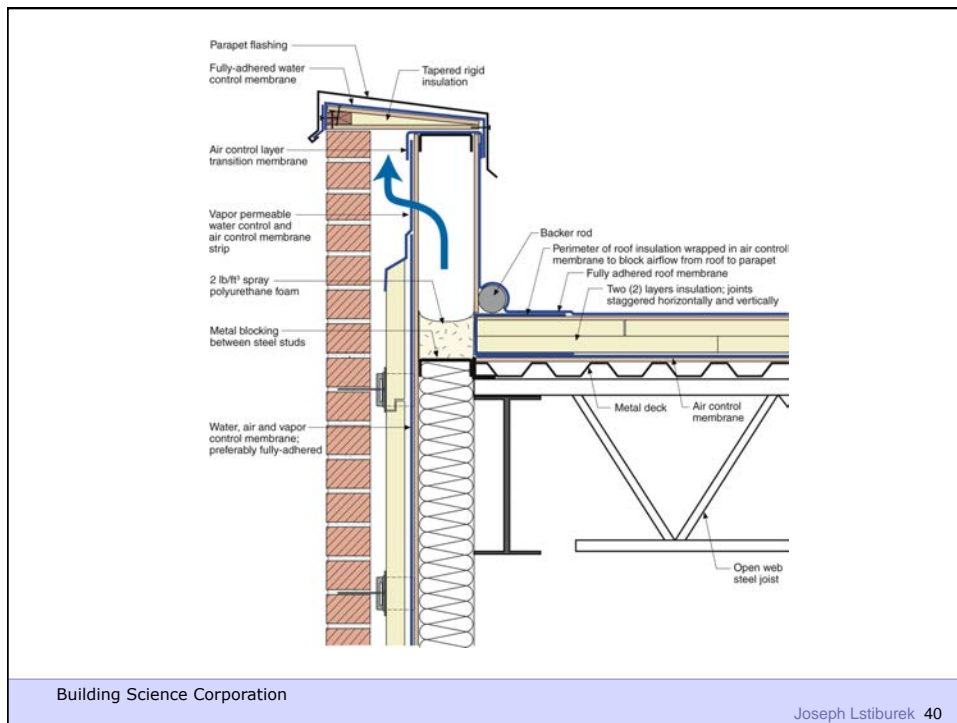
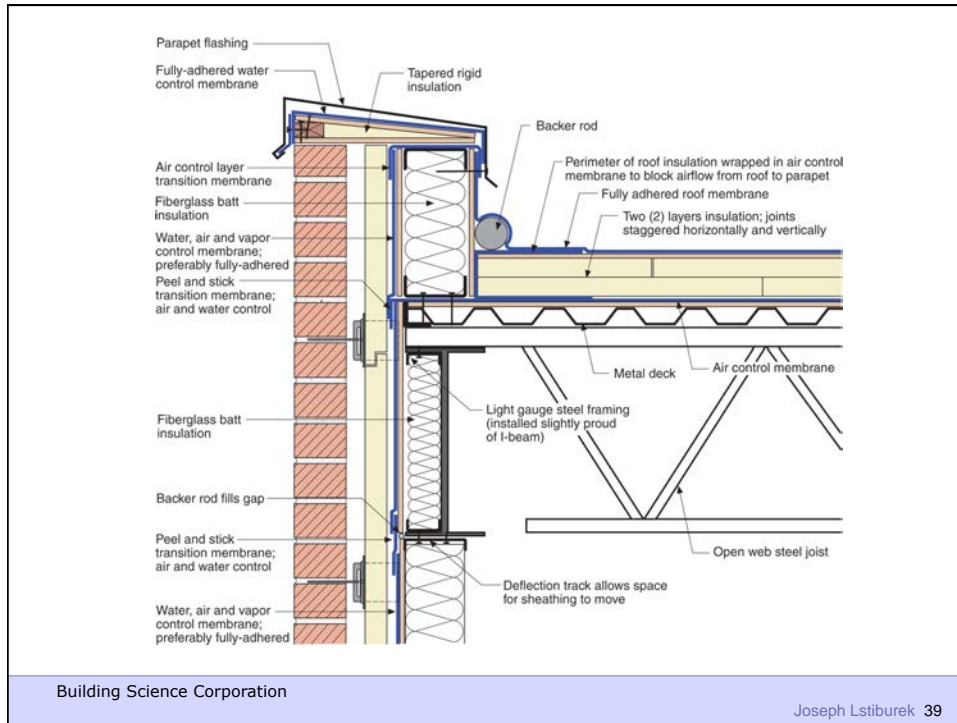
Building Science Corporation

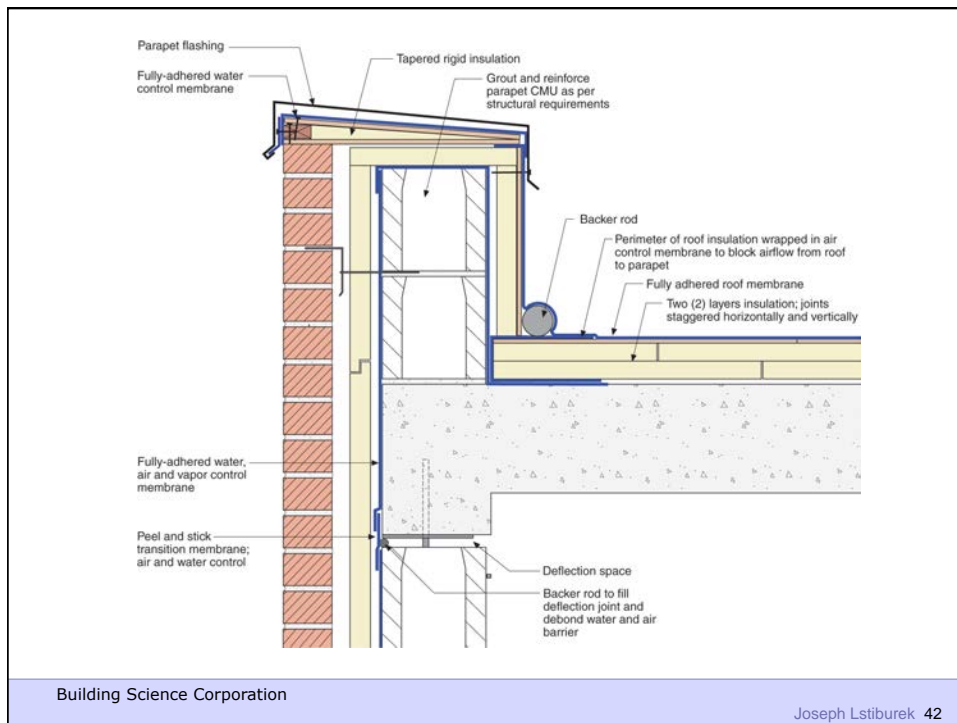
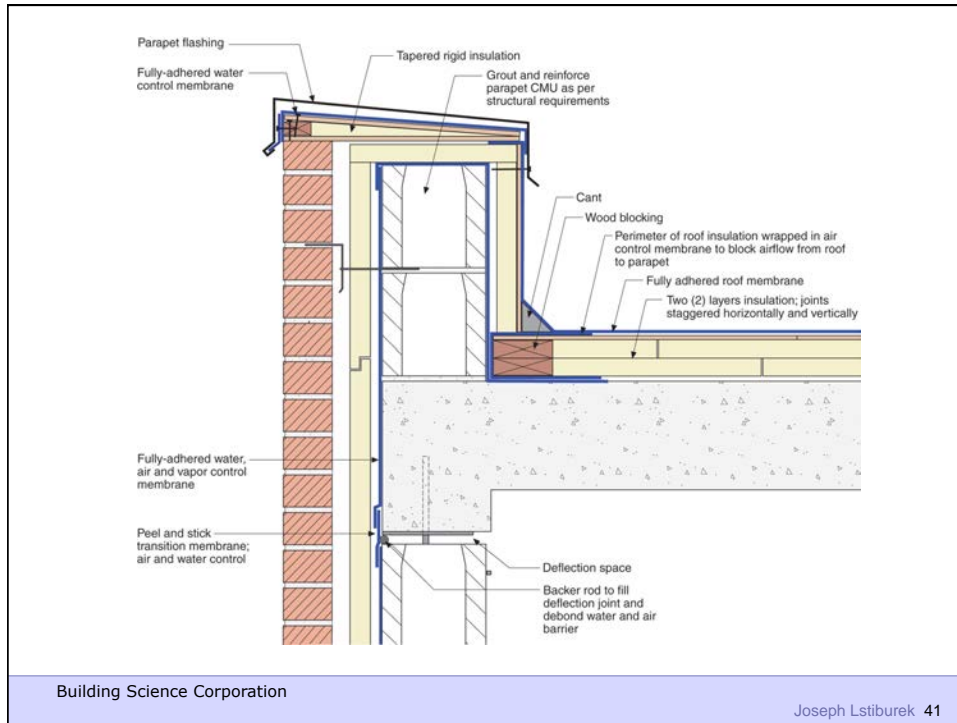
Joseph Lstiburek 32

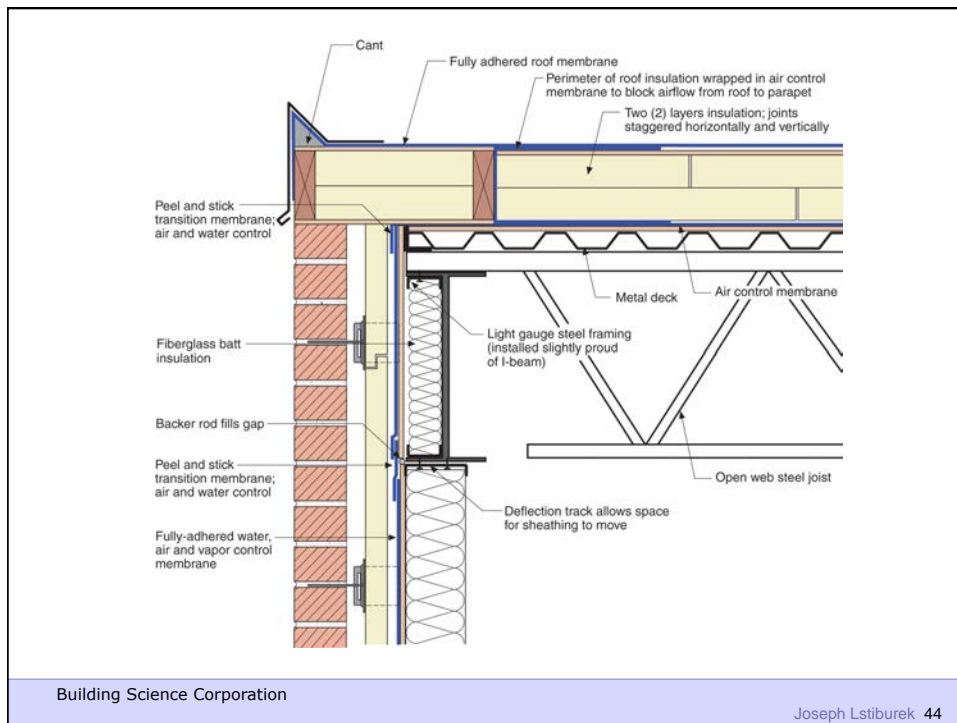
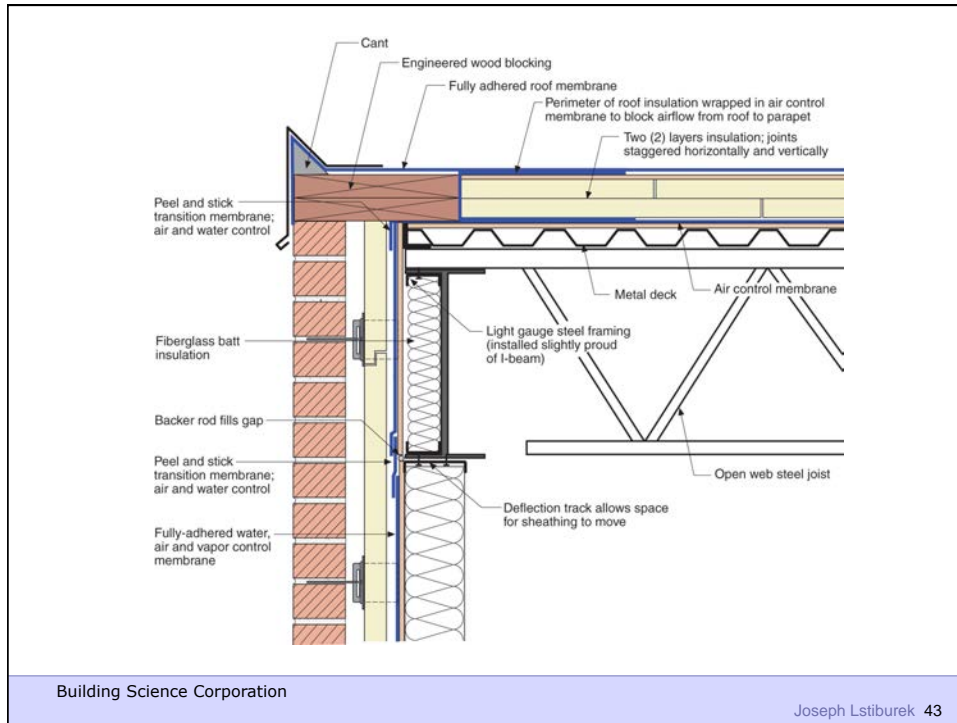


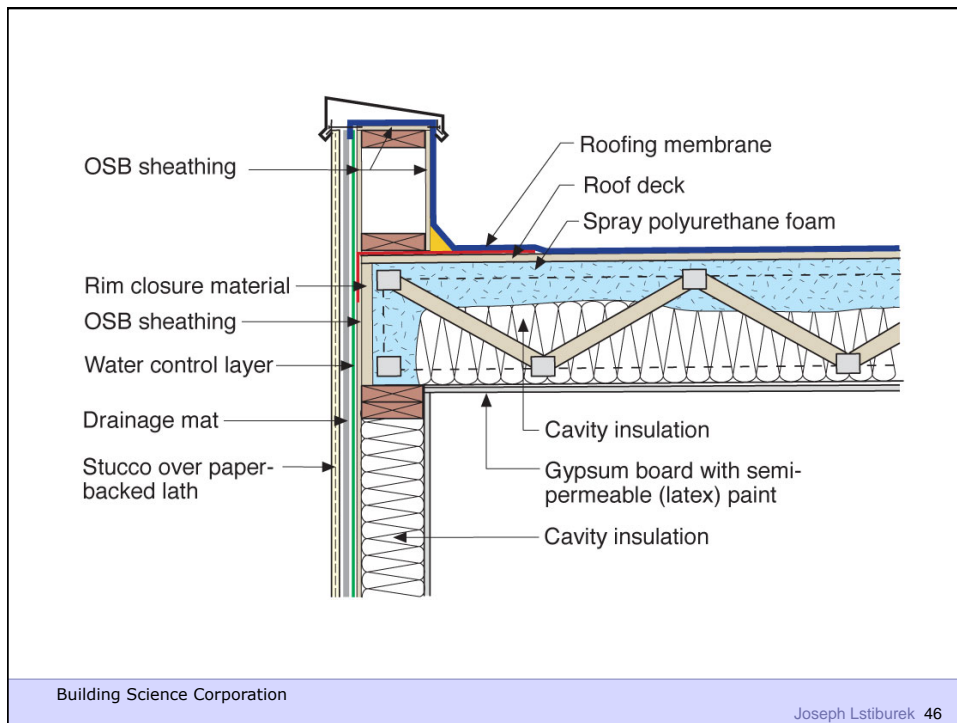
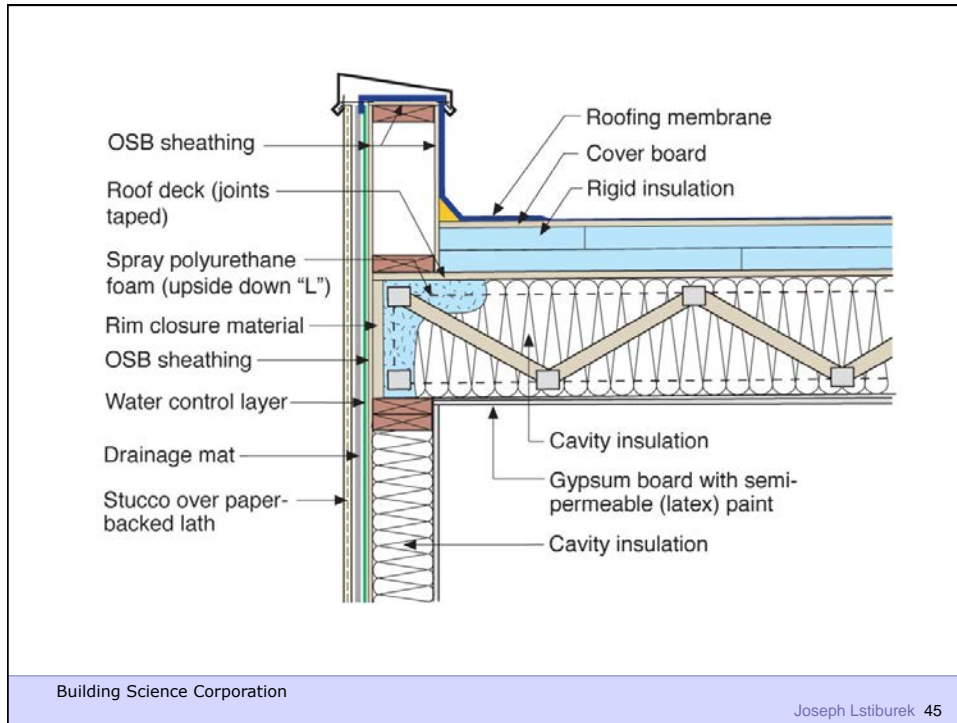


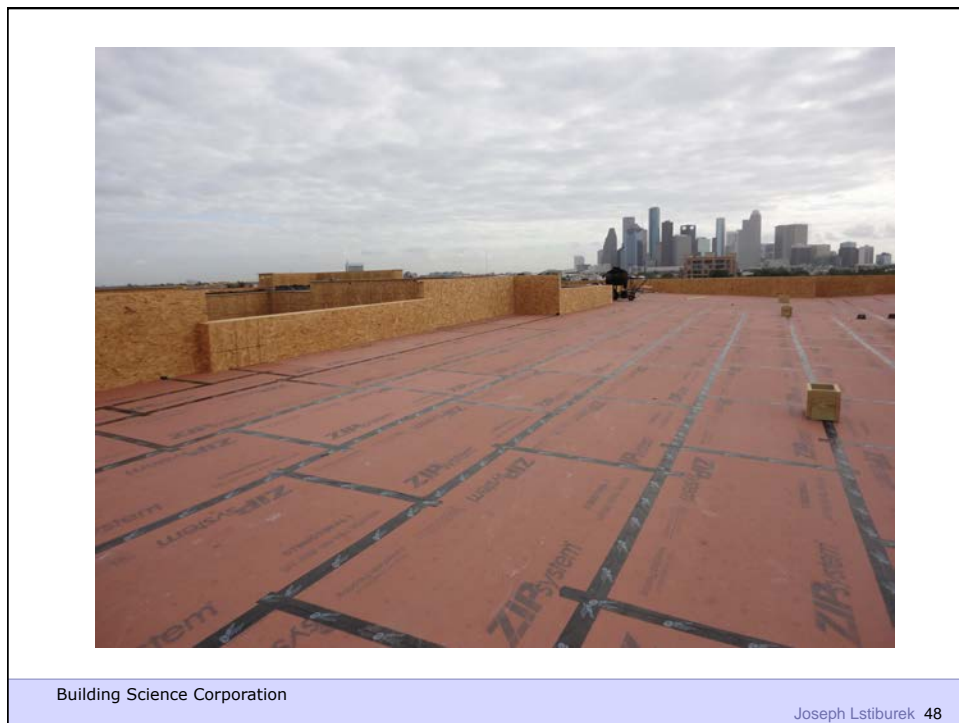
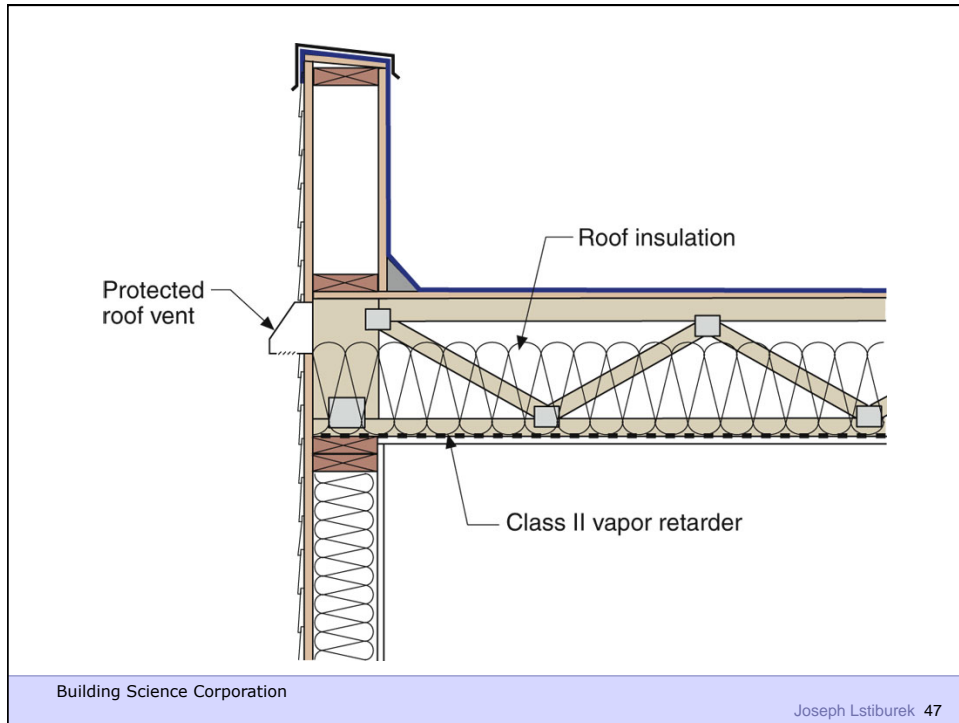














Building Science Corporation

Joseph Lstiburek 49



Building Science Corporation

Joseph Lstiburek 50



Building Science Corporation

Joseph Lstiburek 51



Building Science Corporation

Joseph Lstiburek 52



Building Science Corporation

Joseph Lstiburek 53



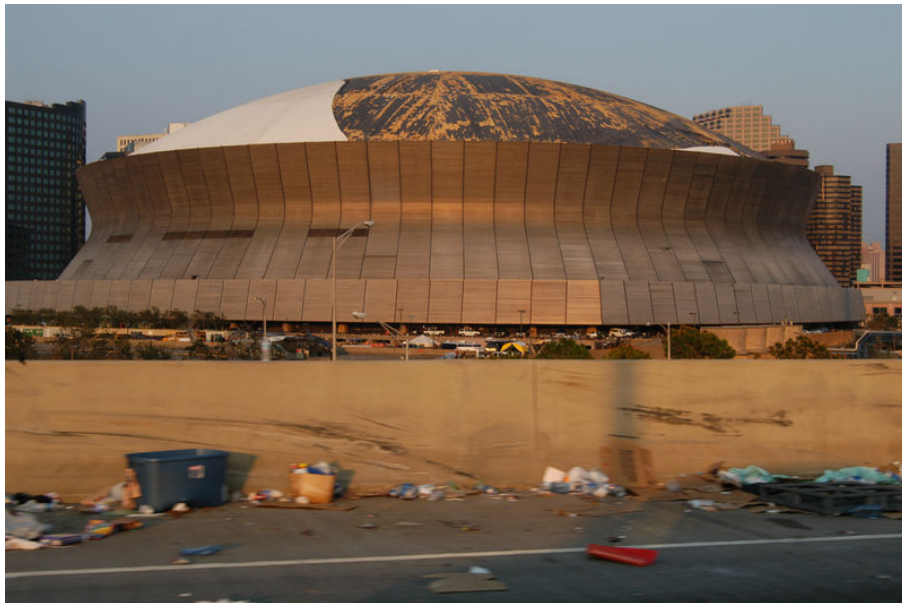
Building Science Corporation

Joseph Lstiburek 54



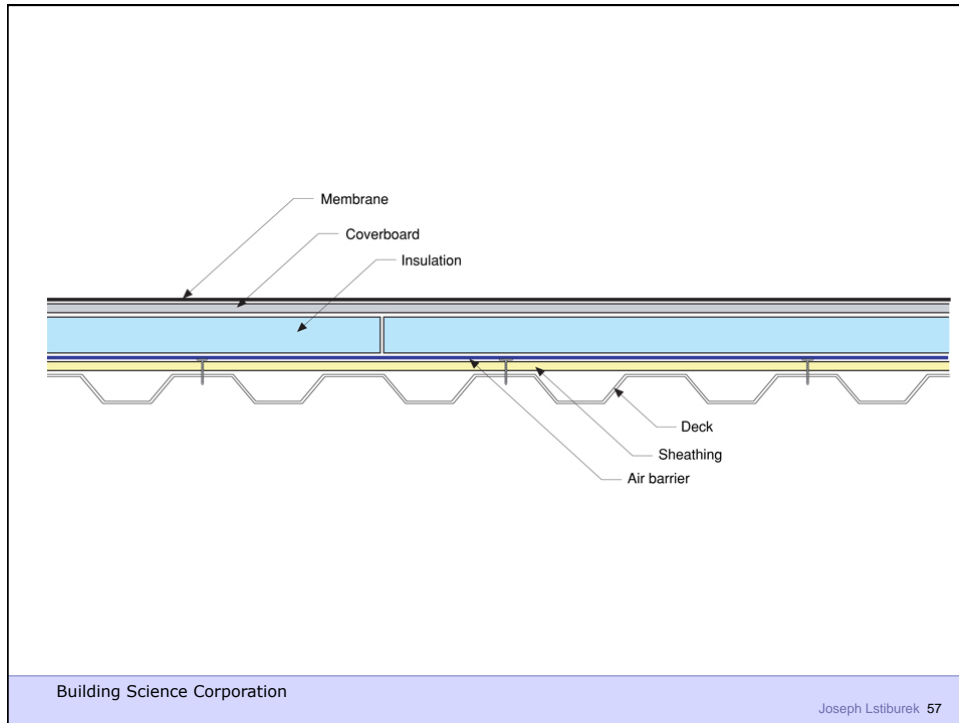
Building Science Corporation

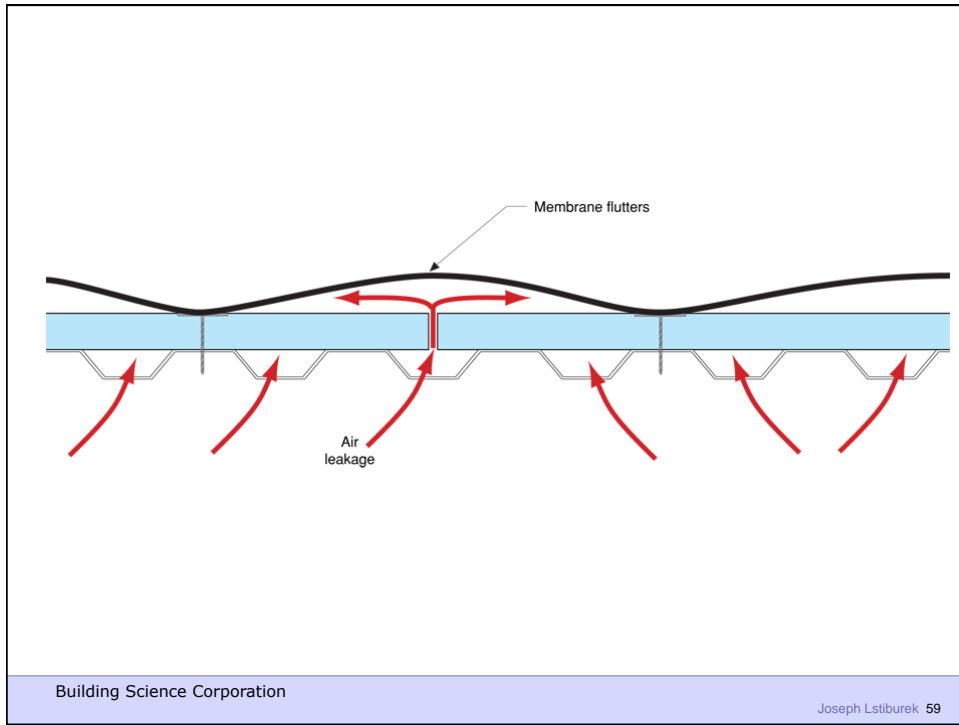
Joseph Lstiburek 55



Building Science Corporation

Joseph Lstiburek 56







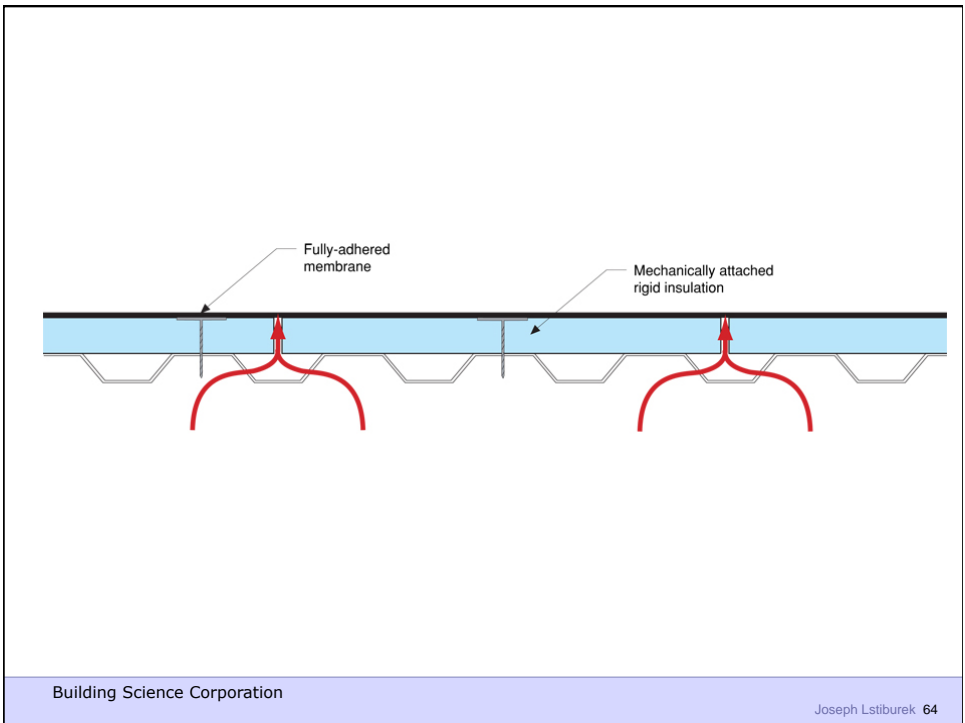
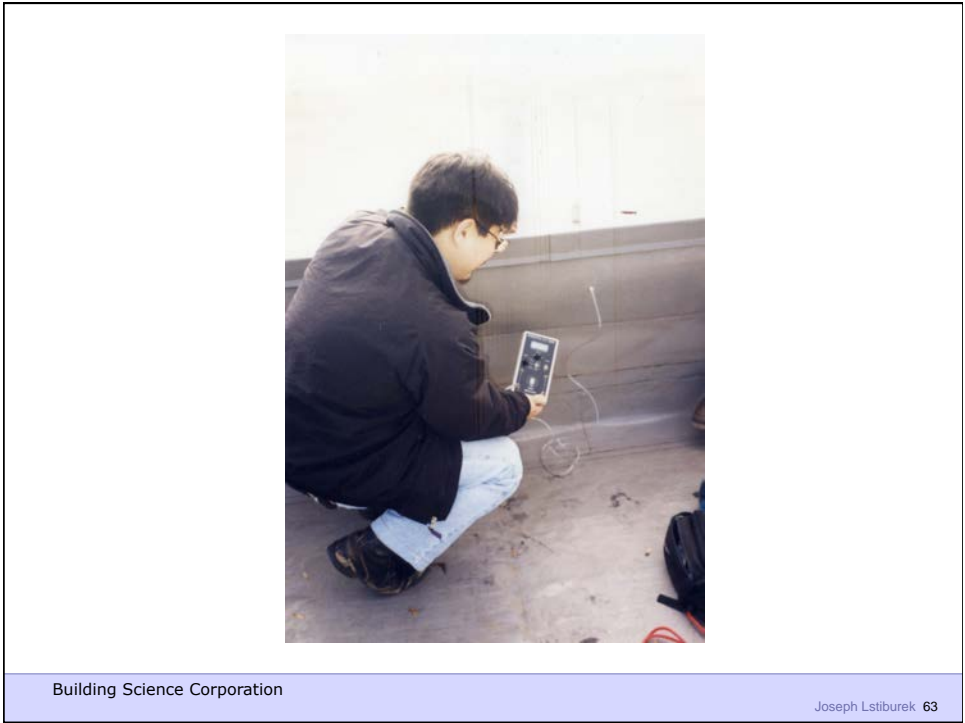
Building Science Corporation

Joseph Lstiburek 61



Building Science Corporation

Joseph Lstiburek 62





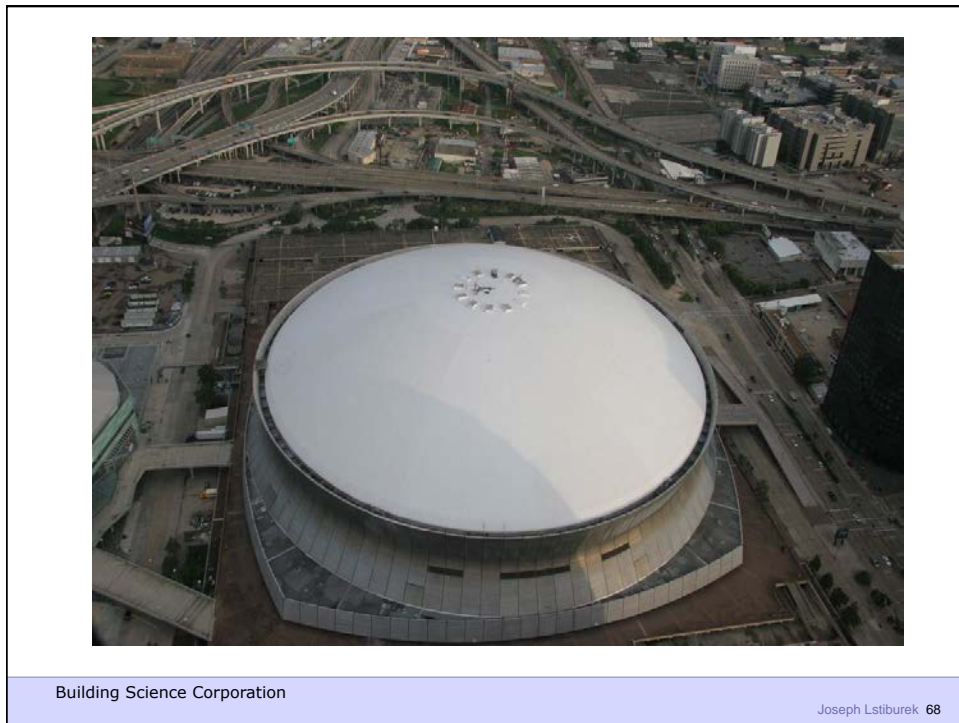
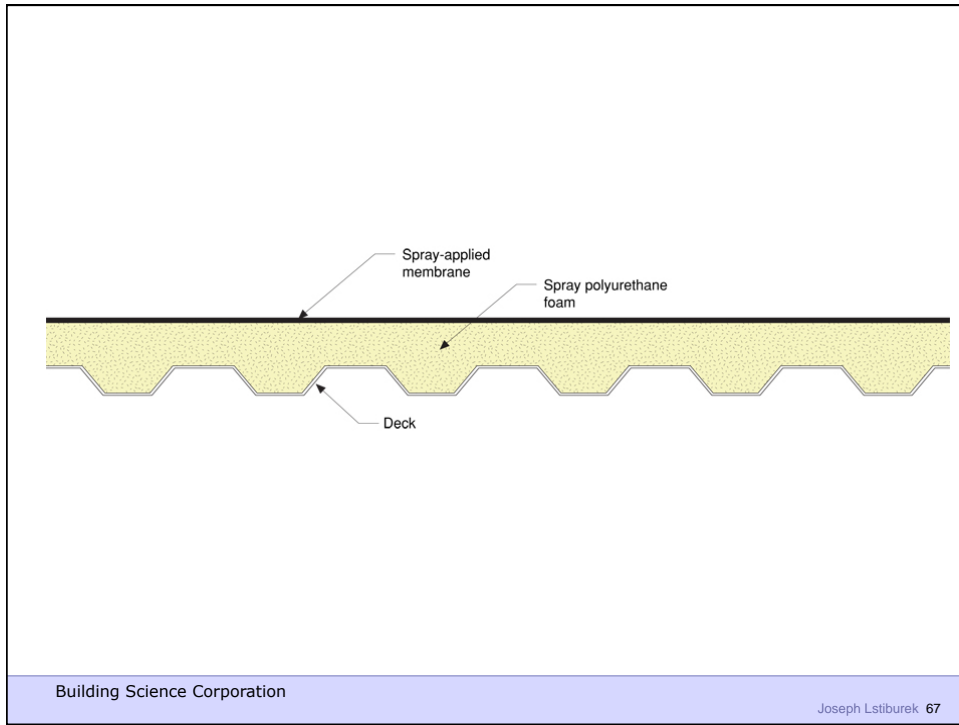
Building Science Corporation

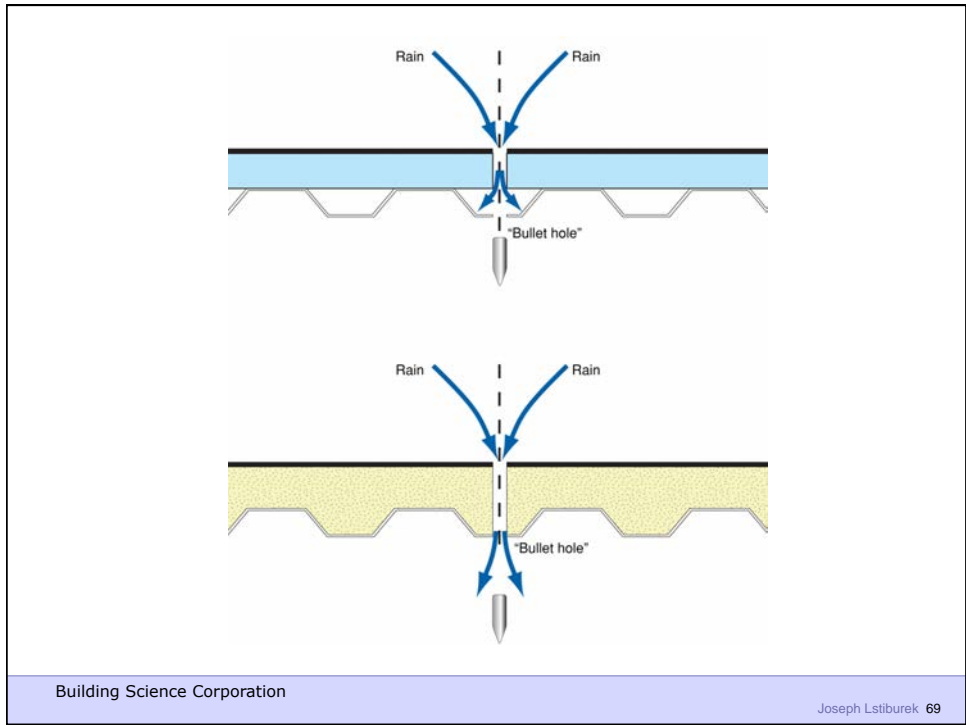
Joseph Lstiburek 65



Building Science Corporation

Joseph Lstiburek 66







Building Science Corporation

Joseph Lstiburek 71



Building Science Corporation

Joseph Lstiburek 72



Building Science Corporation

Joseph Lstiburek 73



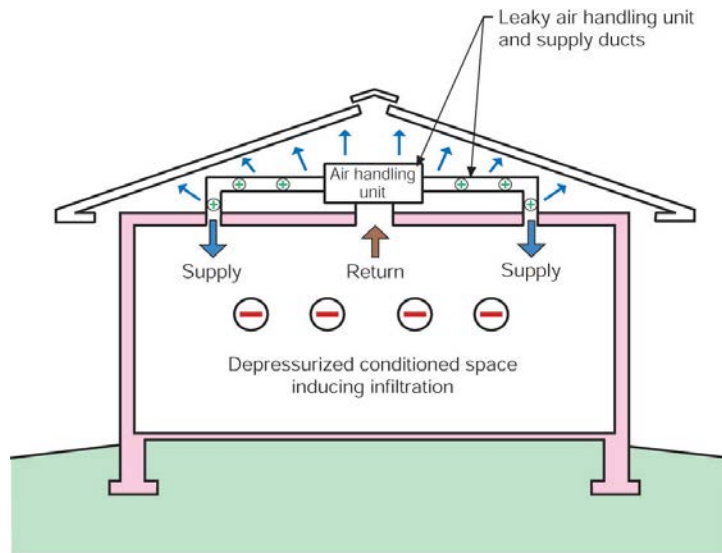
Building Science Corporation

Joseph Lstiburek 74



Building Science Corporation

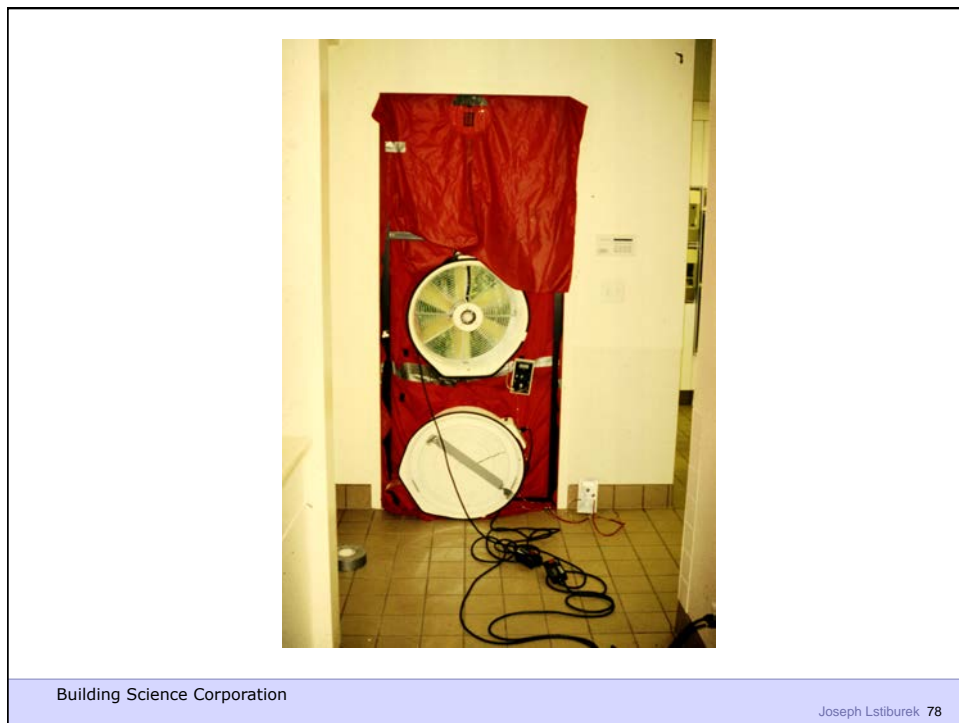
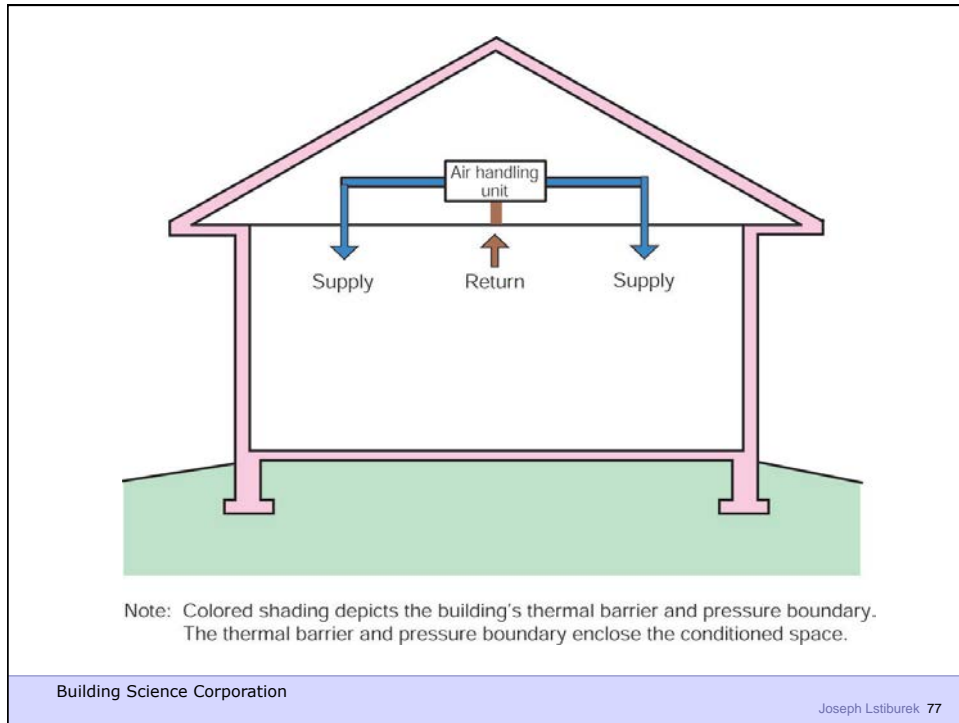
Joseph Lstiburek 75



Note: Colored shading depicts the building's thermal barrier and pressure boundary. The thermal barrier and pressure boundary enclose the conditioned space.

Building Science Corporation

Joseph Lstiburek 76





Building Science Corporation

Joseph Lstiburek 79



Building Science Corporation

Joseph Lstiburek 80



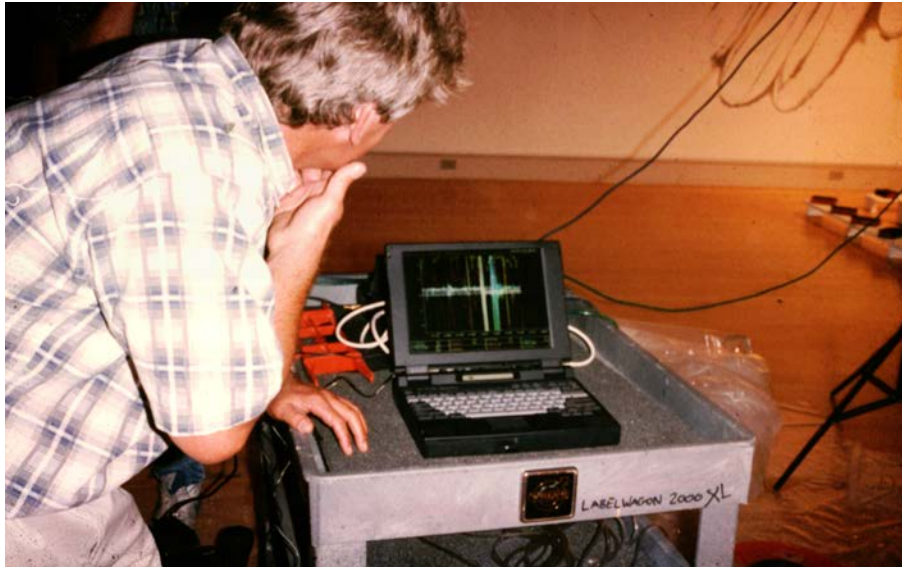
Building Science Corporation

Joseph Lstiburek 81



Building Science Corporation

Joseph Lstiburek 82



Building Science Corporation

Joseph Lstiburek 83



Building Science Corporation

Joseph Lstiburek 84



Building Science Corporation

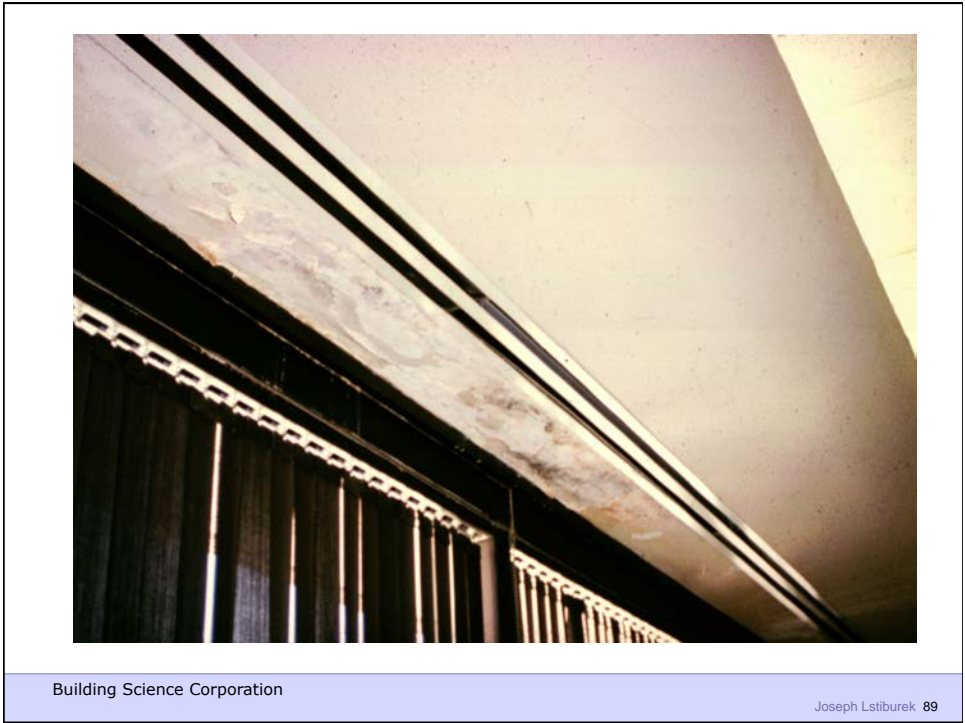
Joseph Lstiburek 85



Building Science Corporation

Joseph Lstiburek 86





Building Science Corporation

Joseph Lstiburek 89



Building Science Corporation

Joseph Lstiburek 90



Building Science Corporation

Joseph Lstiburek 91

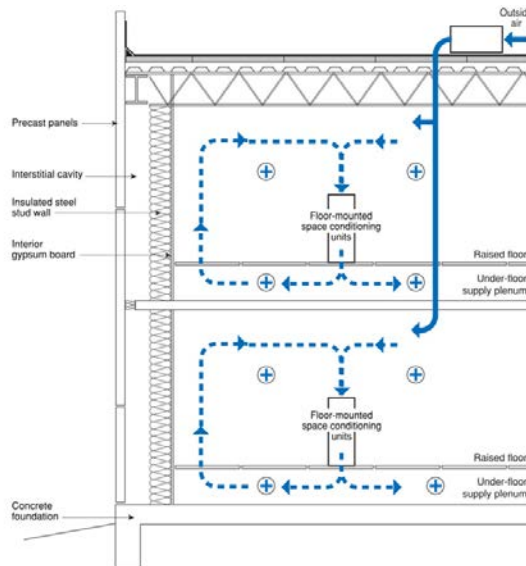
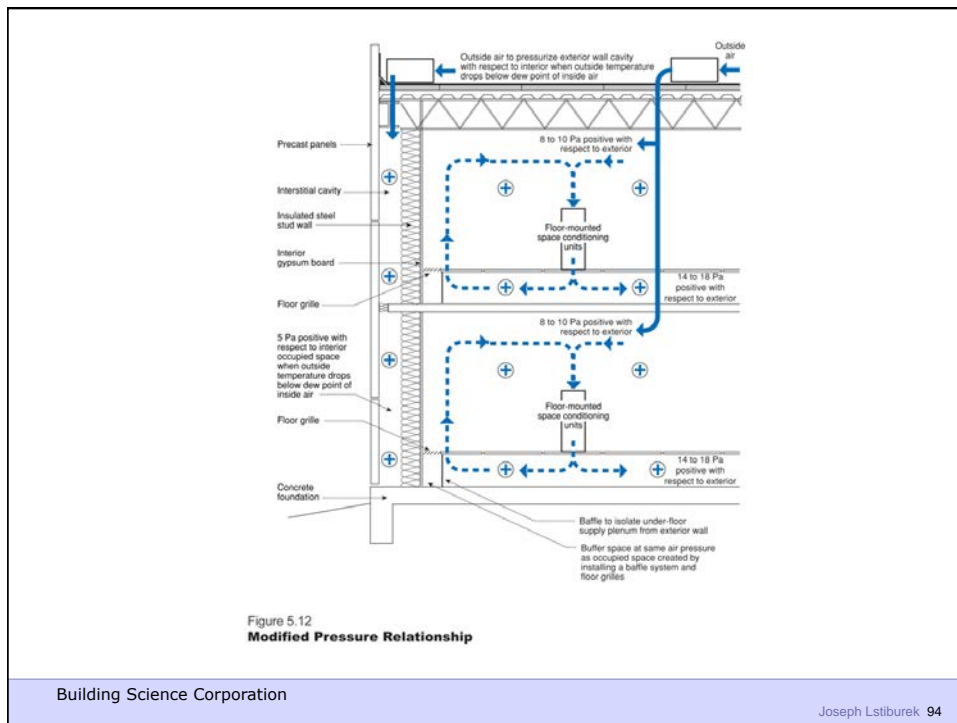
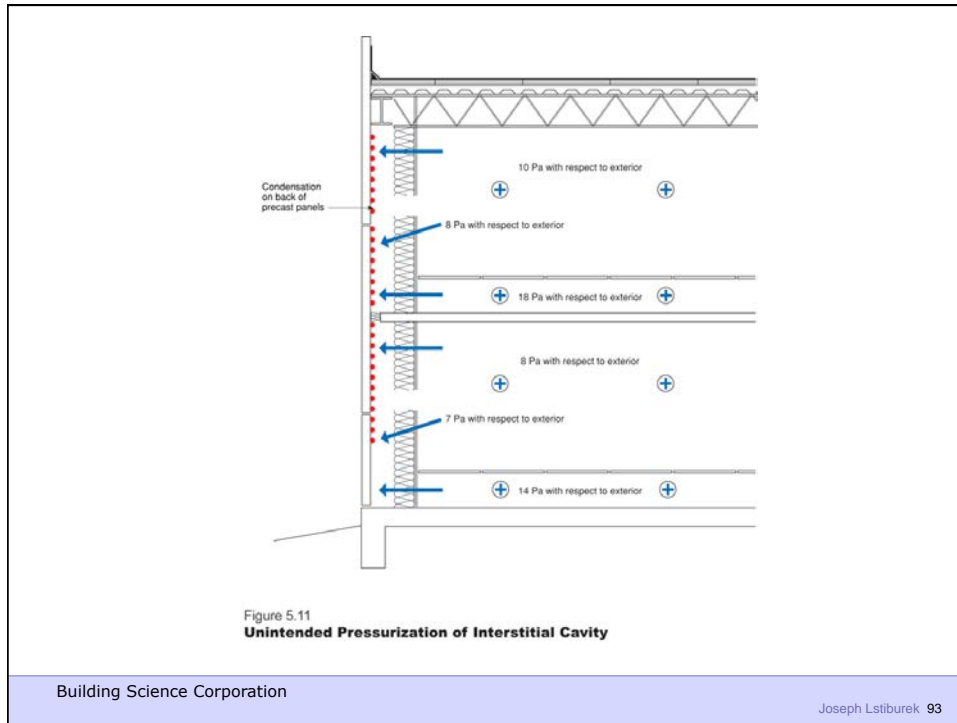


Figure 5.10
HVAC System as Designed

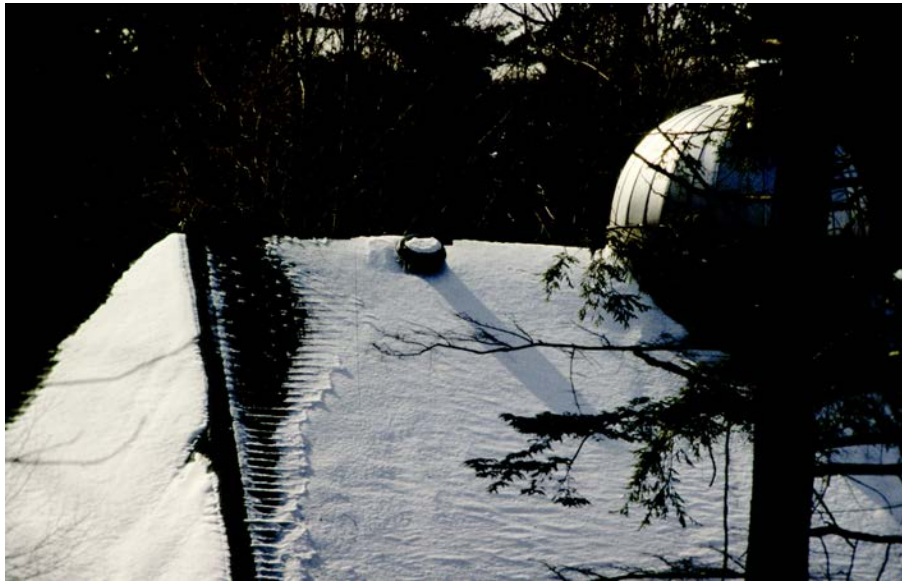
Building Science Corporation

Joseph Lstiburek 92



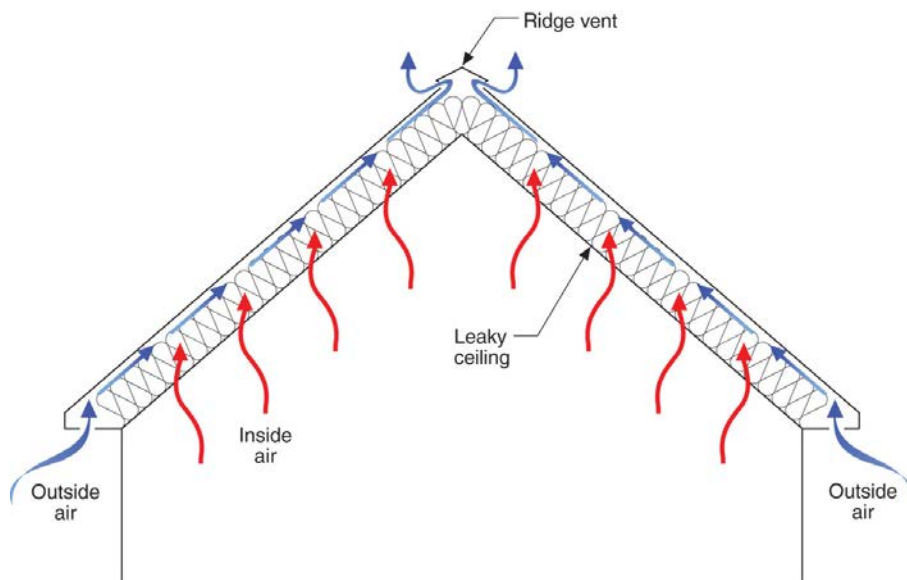






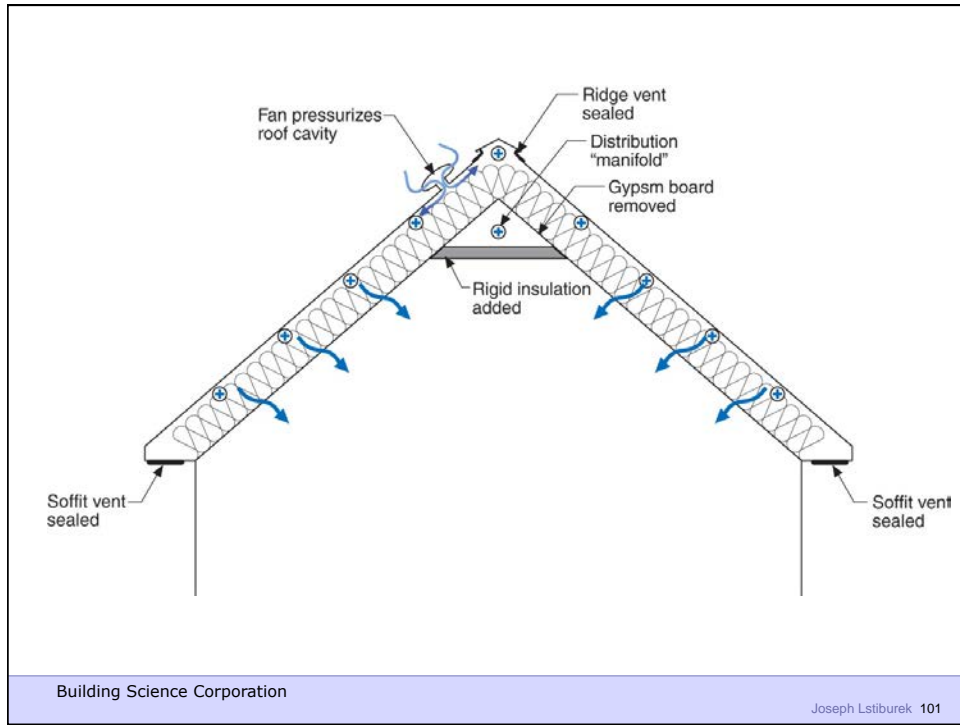
Building Science Corporation

Joseph Lstiburek 99



Building Science Corporation

Joseph Lstiburek 100





Building Science Corporation

Joseph Lstiburek 103



Building Science Corporation

Joseph Lstiburek 104



Building Science Corporation

Joseph Lstiburek 105



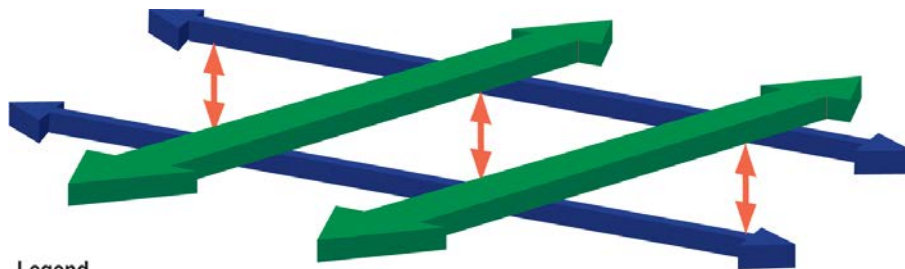
Building Science Corporation

Joseph Lstiburek 106






Building Science Corporation

Joseph Lstiburek 107

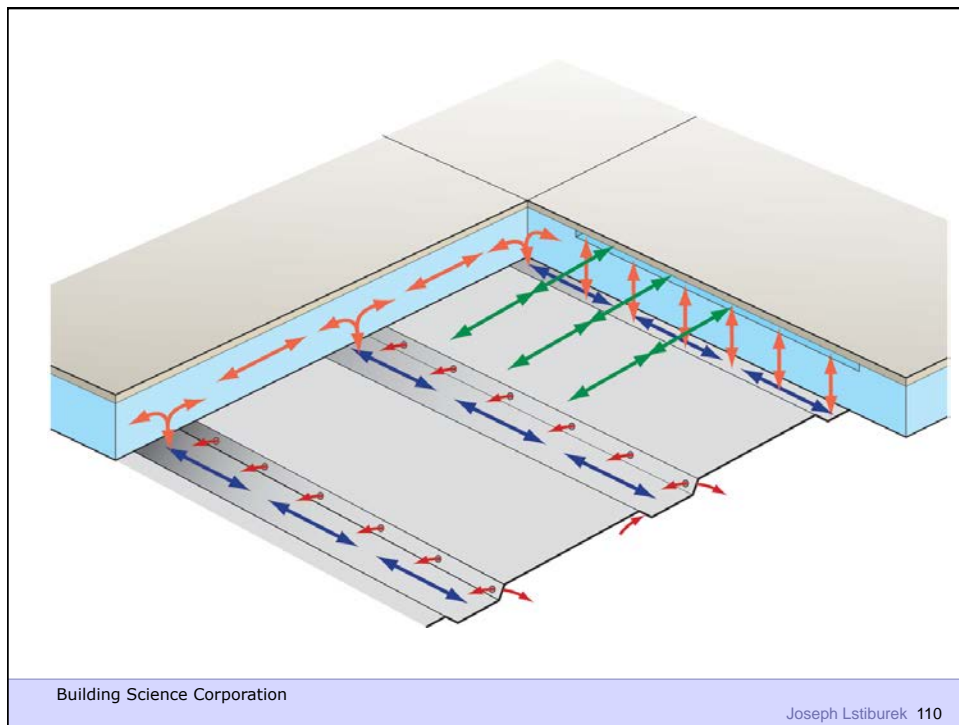
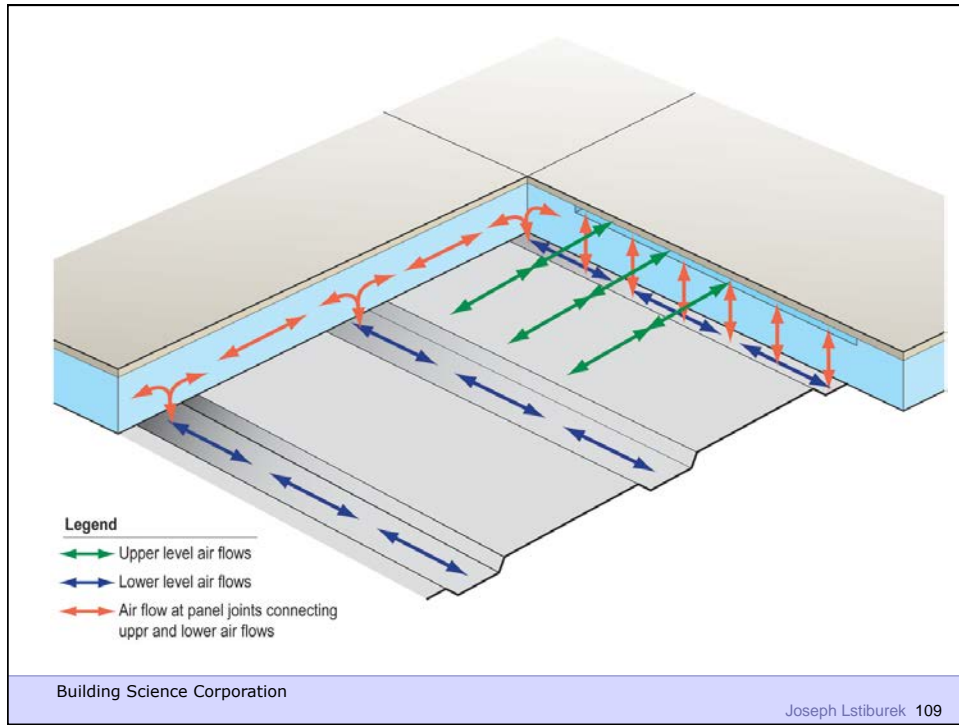


Legend

-  Upper level air flows
-  Lower level air flows
-  Air flow at panel joints

Building Science Corporation

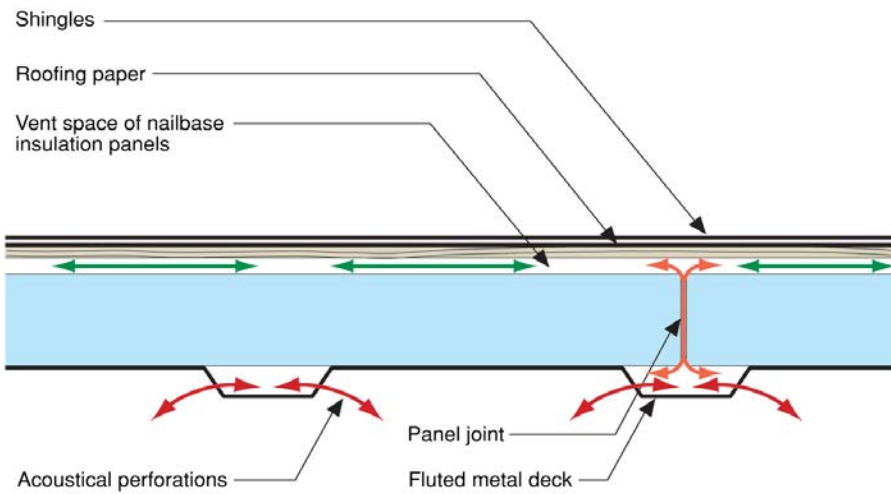
Joseph Lstiburek 108





Building Science Corporation

Joseph Lstiburek 111



Building Science Corporation

Joseph Lstiburek 112

