



Window installation and other “Grimms” stories

Joerg Birkelbach

jbirkelbach@tremcoinc.com

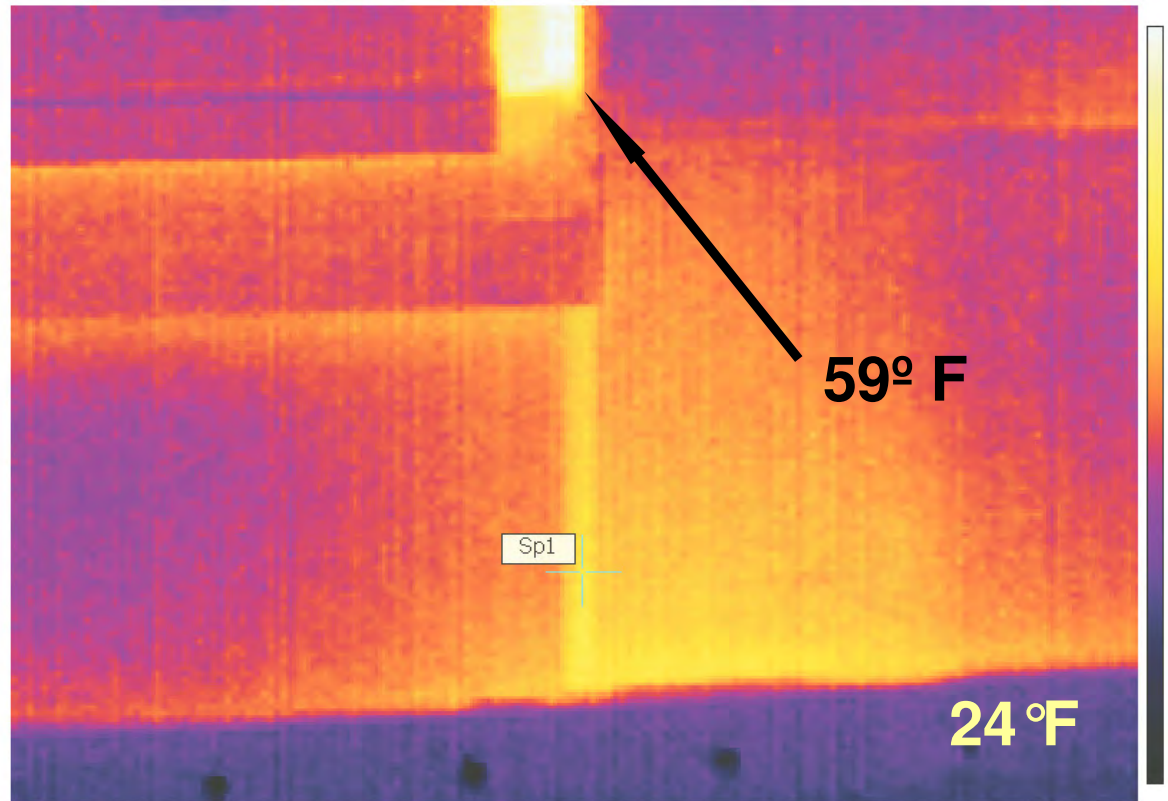
+1 216 704 6821



The building envelope!



It isn't always obvious



What worth a high end window without a high end install?

30ft long crack	Crack width 1,0 mm (1/32")			Crack width 1,5 mm (3/64")		
	Helsinki	Tampere	Oulu	Helsinki	Tampere	Oulu
Consumption [kWh / year]	287,4	334,2	352,9	980,0	1101,5	1163,2
Oil [litres/year], with 90 % efficiency	31,9	37,1	39,2	108,9	122,4	129,2

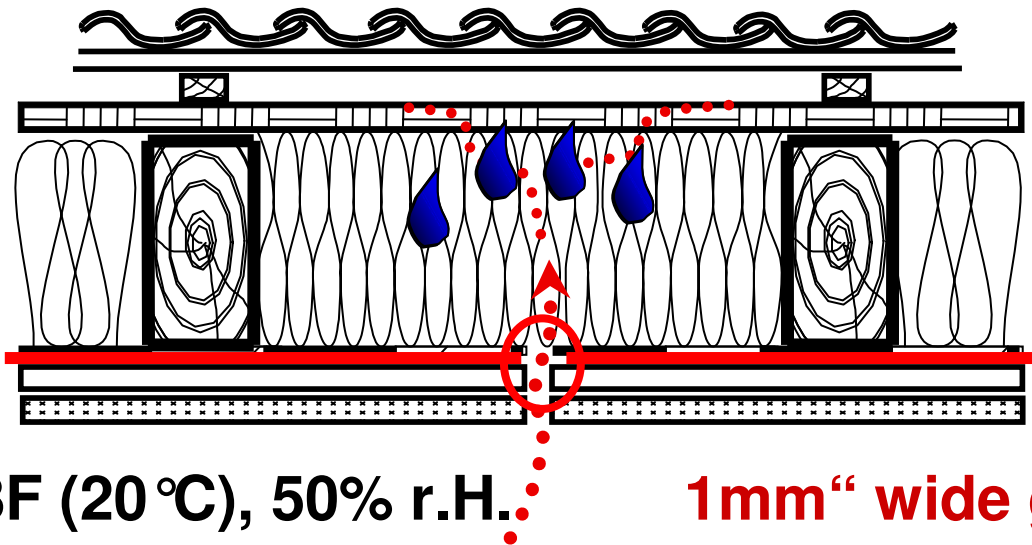
Sources: University of Tampere



Why is airtightness important?

Outside: 23F (-5 °C), 80% r.H.

1 pint a day



Inside: 68F (20 °C), 50% r.H.

1mm wide gap

(1 long)



Avoid Construction Damage



If you build tight ventilate right



Build Tight!

A hand is shown holding a glowing green recycling symbol (a triangle of three arrows). The background is dark, and the symbol is the central focus.

Insulation
Air Tightness
Ventilation

Ventilate Right!



Noise Reduction



Current situation

Traditional Seal



Current situation

Traditional Seal



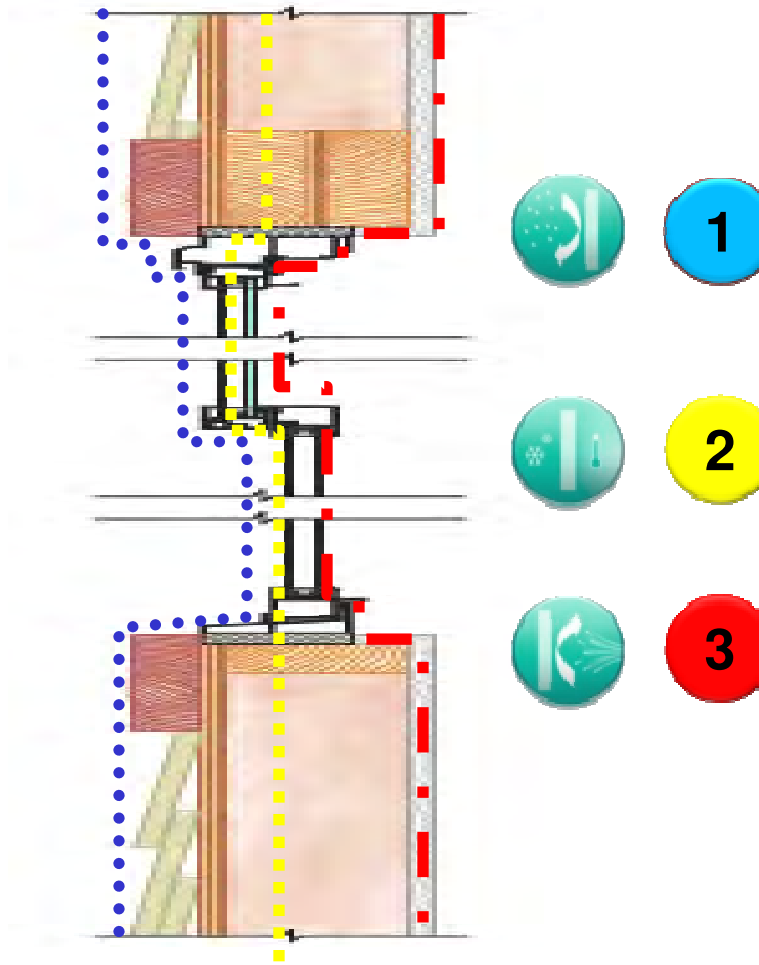
Traditional Seal



Traditional Seal



3 level seal!





[Login](#)

[FREE REGISTRATION](#)

CONNECTING

General Contractors
to Sub Contractors
and Suppliers World Wide

**SEARCH
CONTRACTORS BY:**

**ZIP
CODE**

or

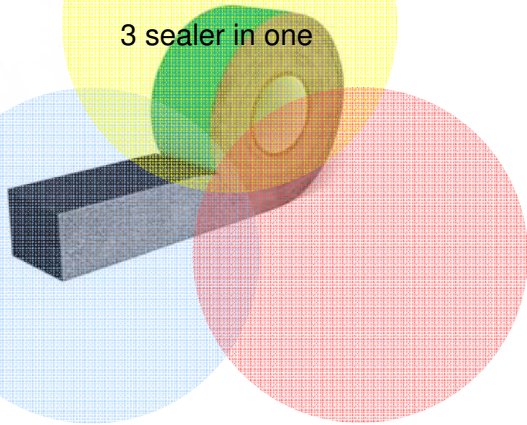
**Spec Section
/Trade**

[ADVANCED SEARCH](#)

3 level seal toolbox?

Multifunctional tape

3 sealer in one



LEF

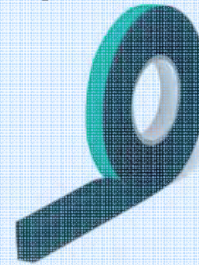
Low Expansion PU Foam
for Sound & Thermal
Insulation



Moisture variable flashing tapes

Intelligent Seal for Airtight
Internal & Weather
tight External Joints

Impregnated pre compressed tape



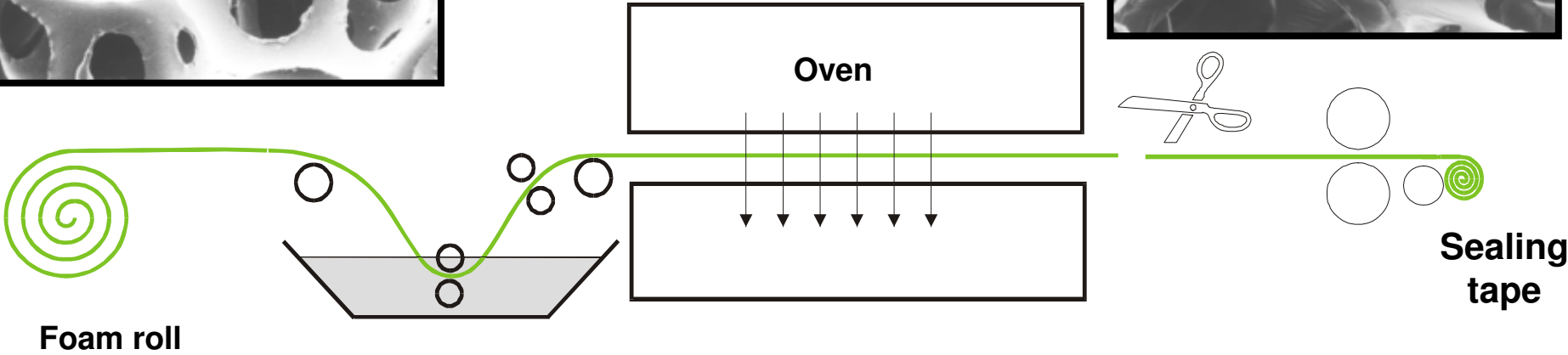
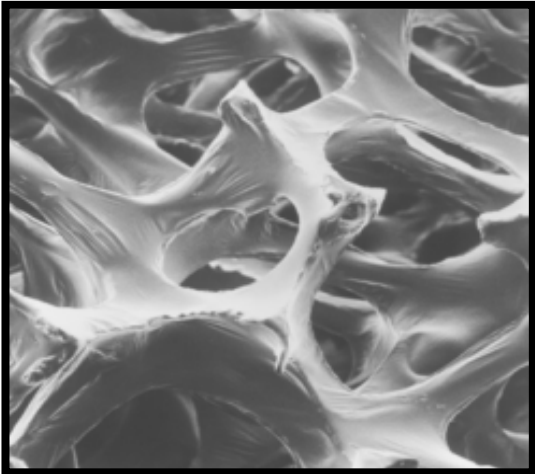
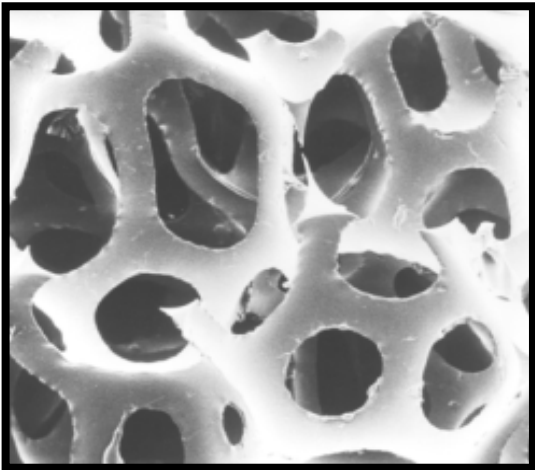
High performance
engineered transition
assembly



Take a closer look how impregnated tapes are developed



Let's have a look how an impregnated pre compressed tape is developed



Impregnation

Drying

Cutting

Compression rollers



What does the impregnation do?



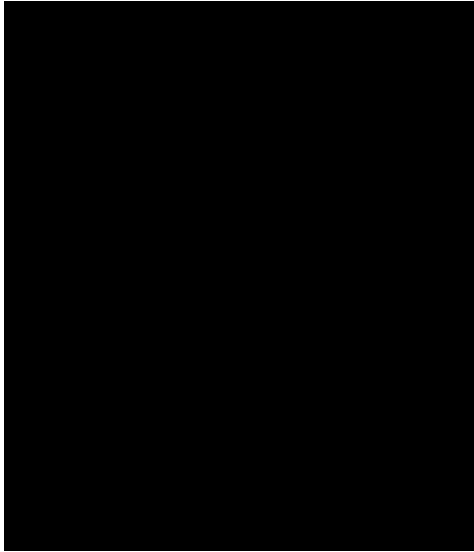
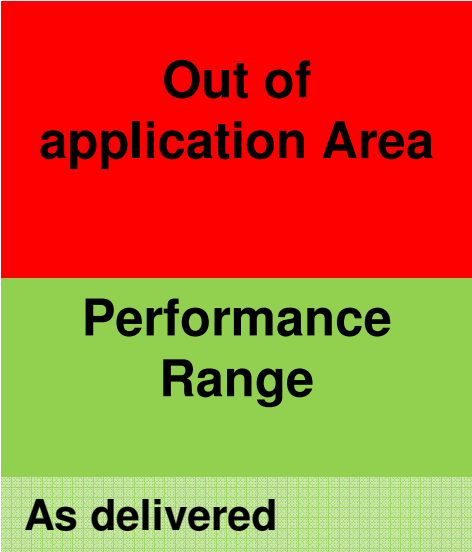
It makes the foam hydrophobic

It makes the foam UV resistant

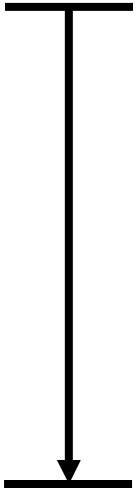
It controls the expansion time



What is the correct tapes size?

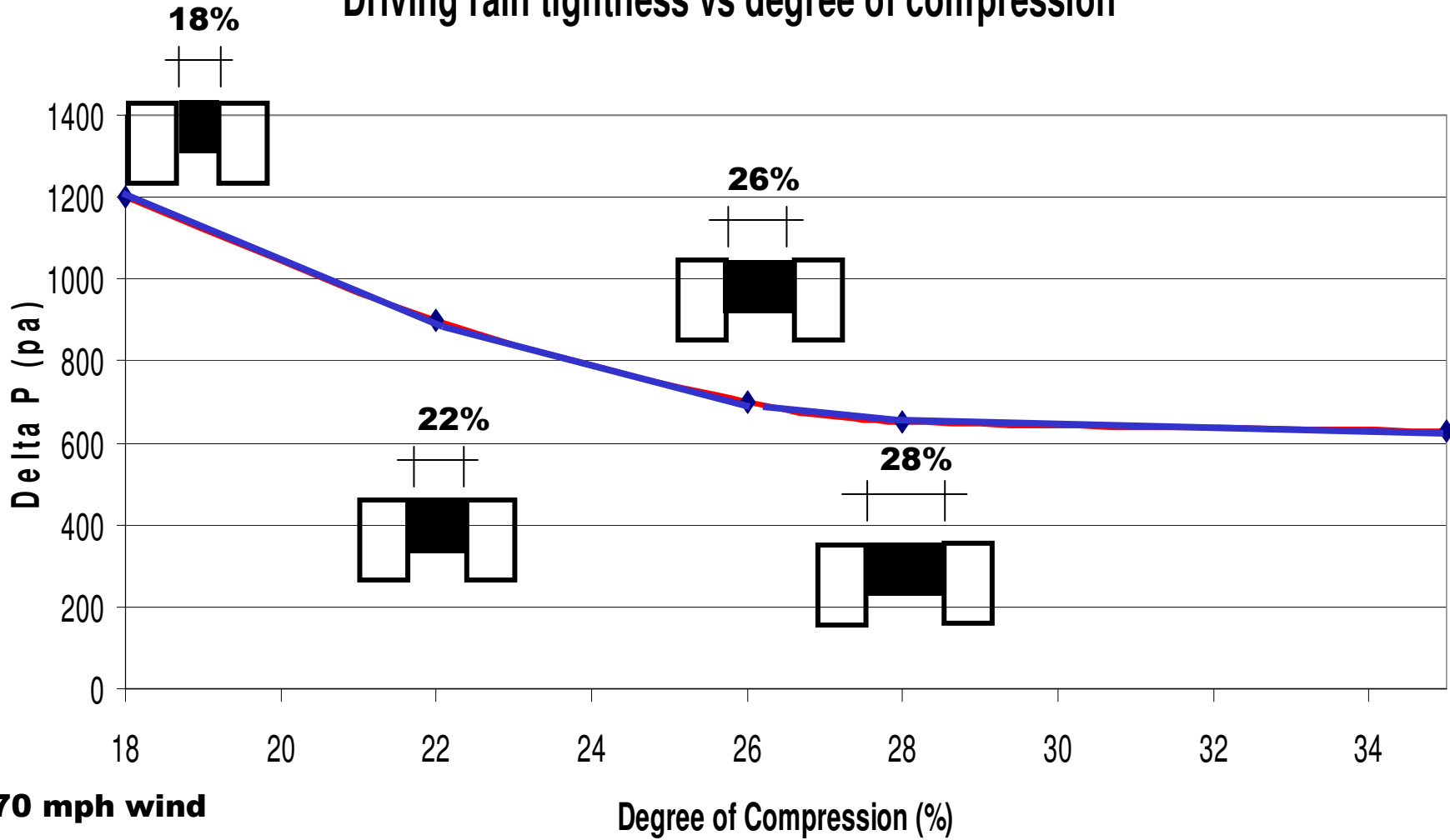


Compression



How about the weather resistant's?

Driving rain tightness vs degree of compression



Noise Reduction



STC up to 54!

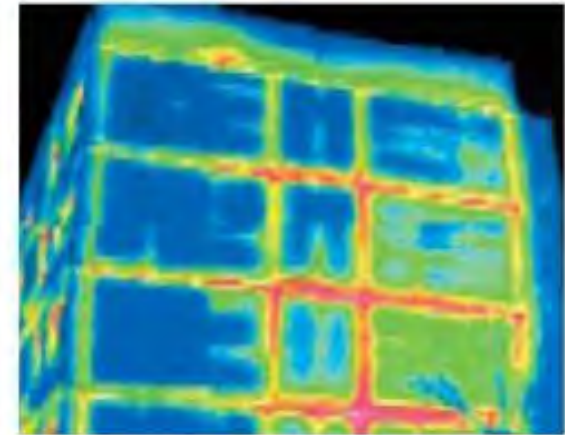
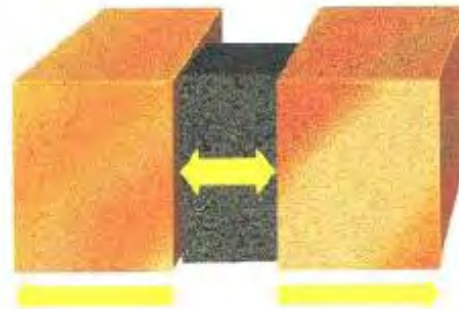
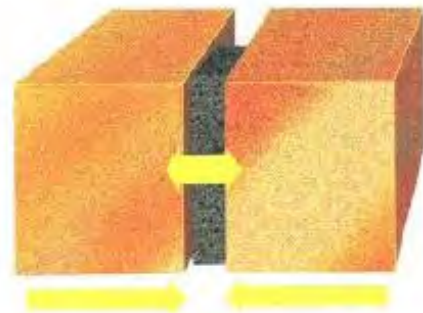


Comparison of cheap with valuable solutions

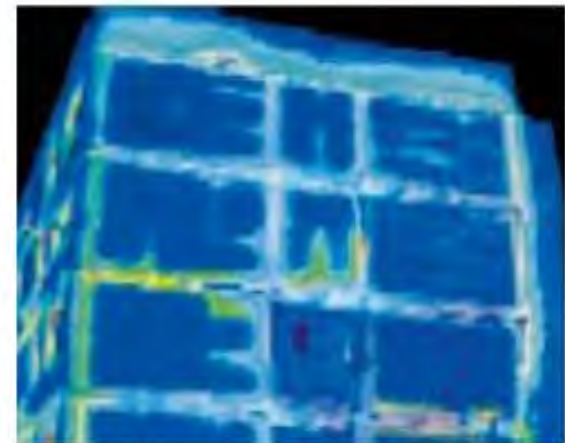


Other main benefits of impregnated tapes

- High movement capability
- Thermal insulation
- Sound insulation
- No installation temperature limitation
- Driving rain and UV resistance*
- Fast, clean and easy installation
- Aesthetic solutions



Thermography shows clearly the heat loss due to faulty facade sealing



Illmod 600 guarantees a tight seal against wind and driving rain up to 600Pa, as well as providing the openness needed for vapour diffusion from the facade joints



Is this technology new...?



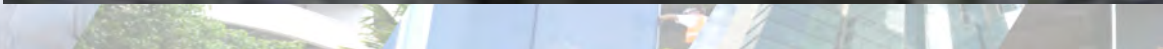
Construction damages a due to condensation



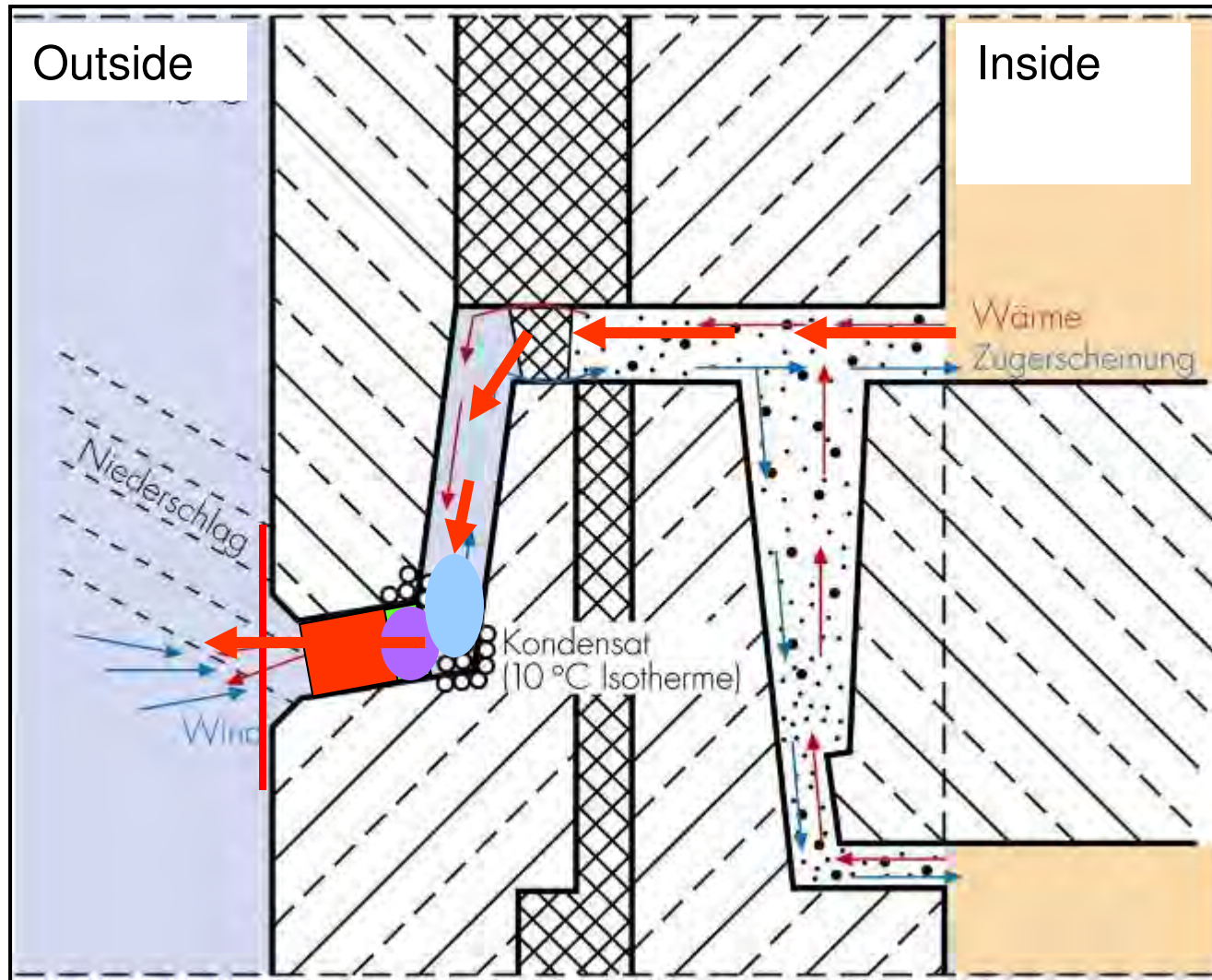
Construction damages a due to condensation



Construction damages a due to closing the system on wrong side



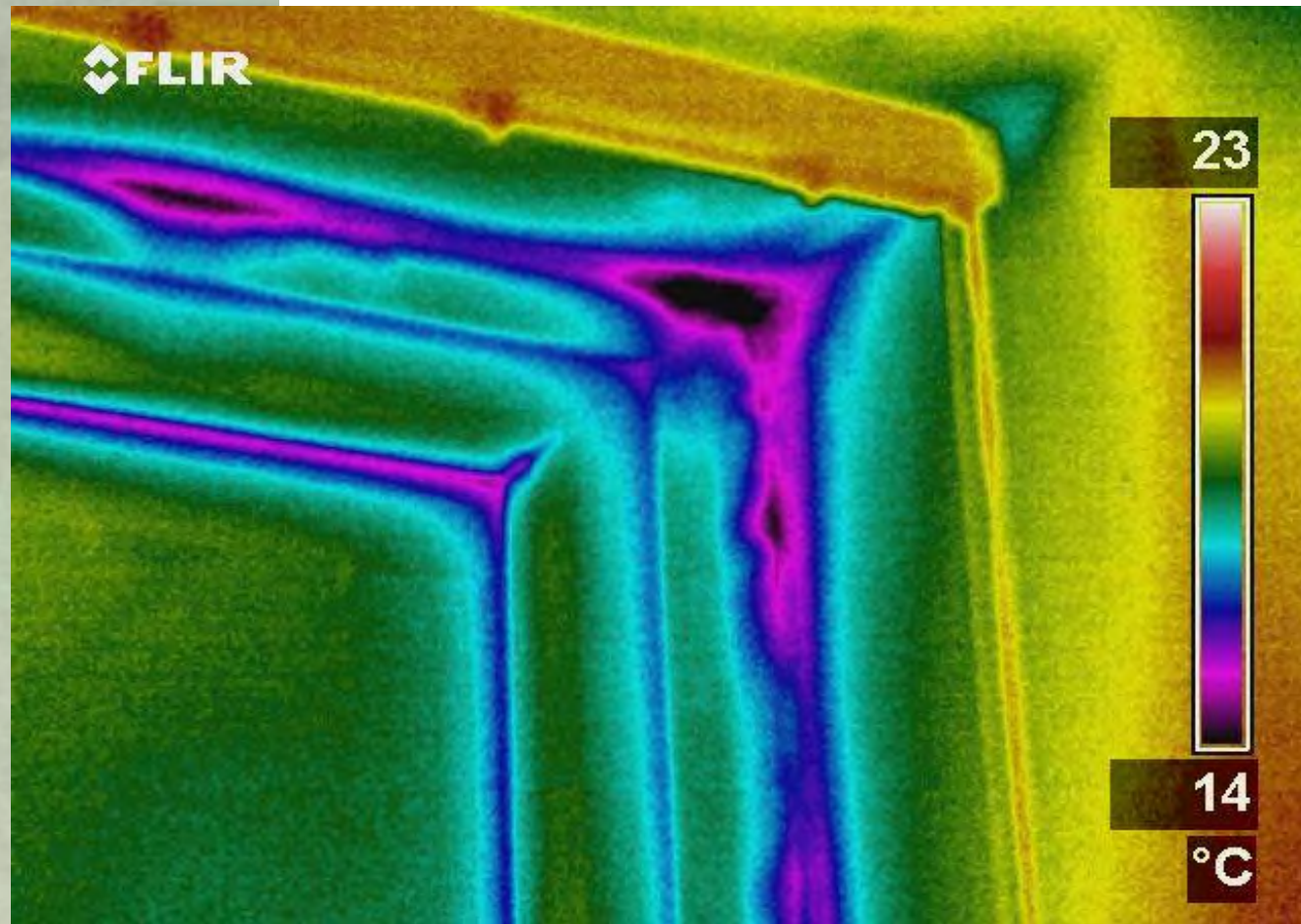
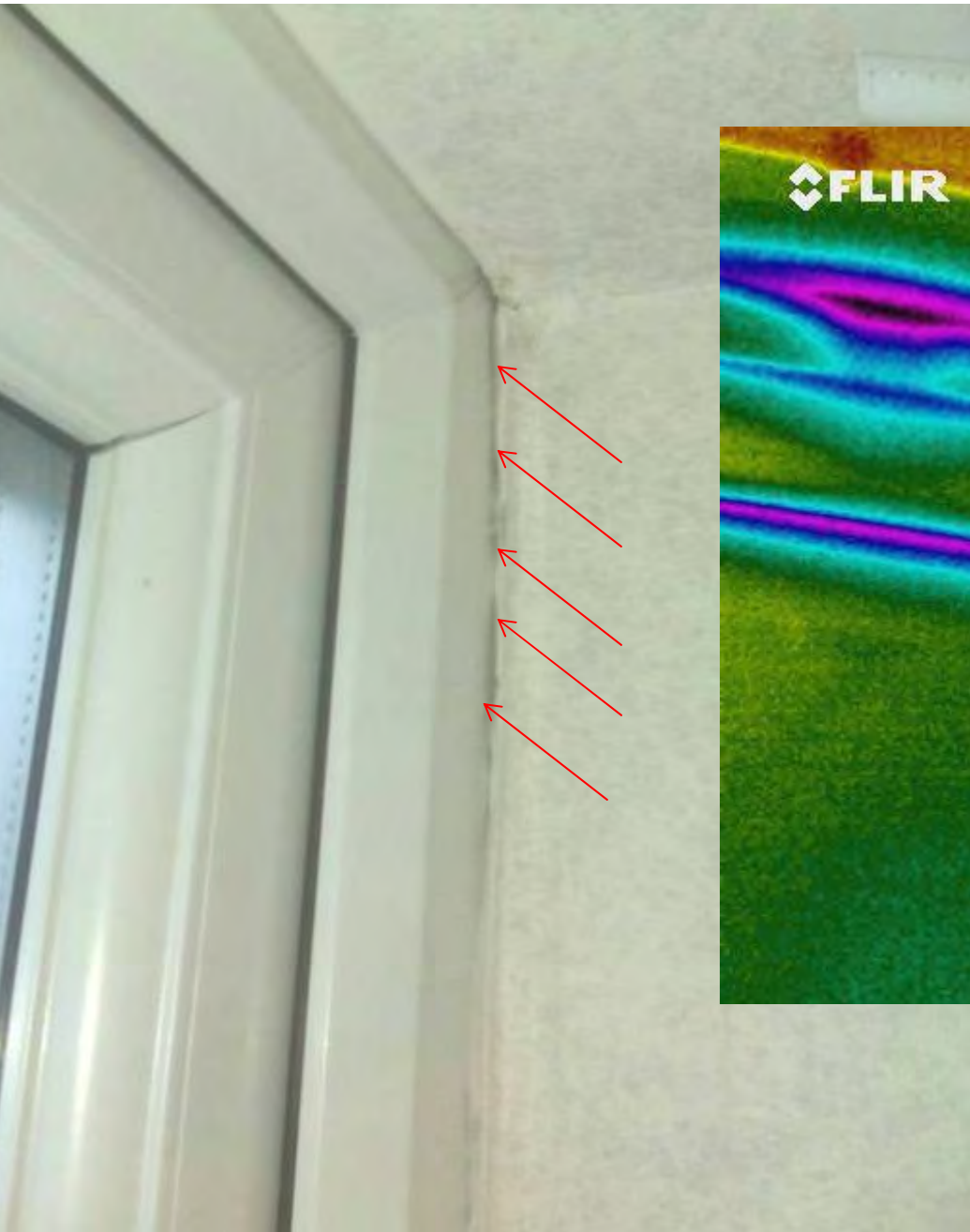
Construction damages a due condensation



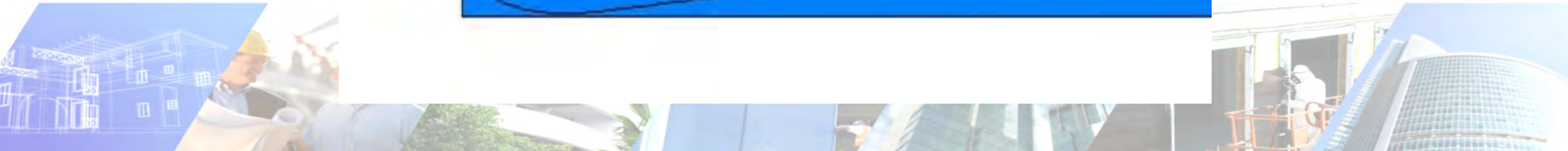
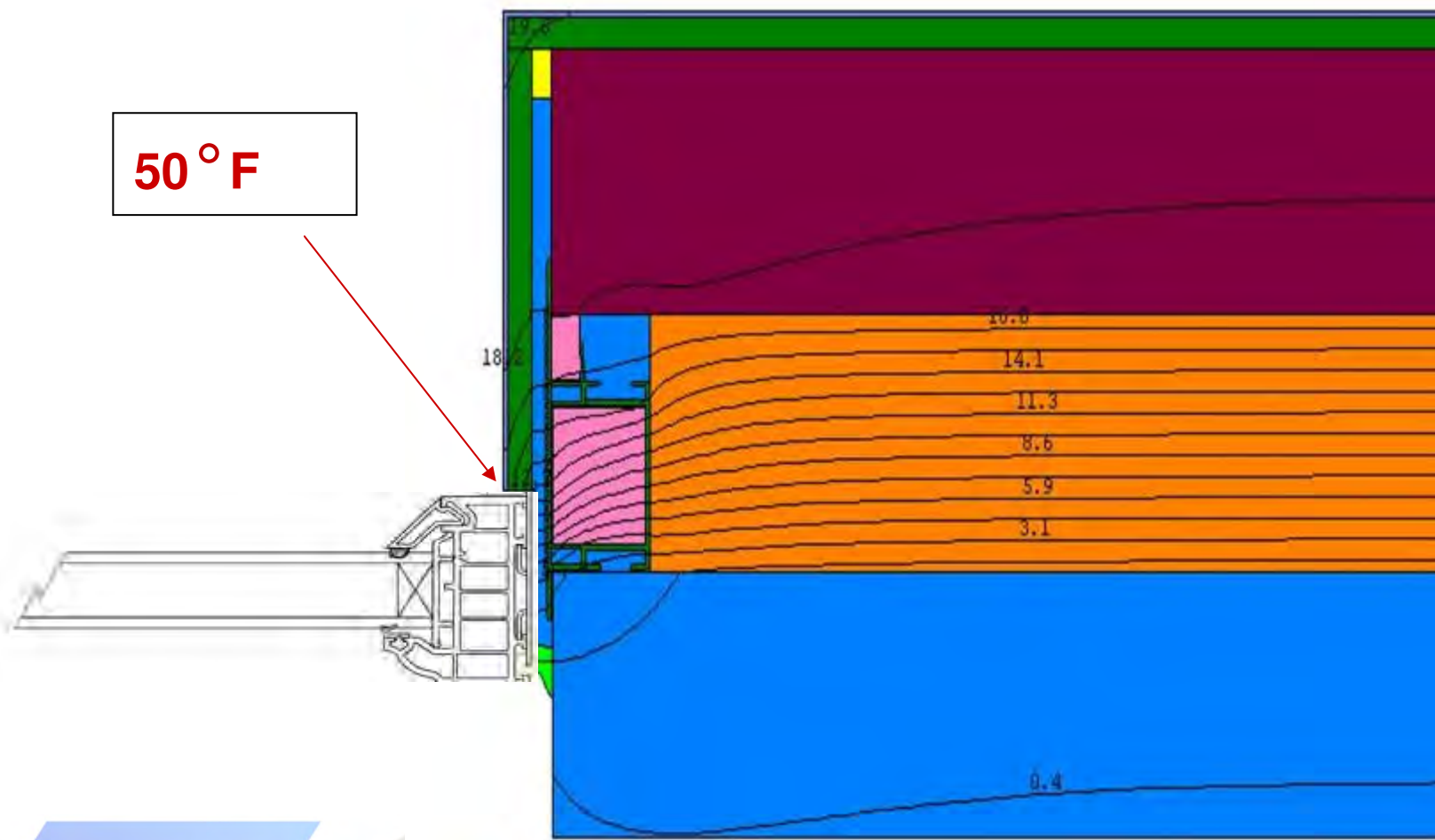
Field of applications for impre. tapes



Obvious need for a proper seal

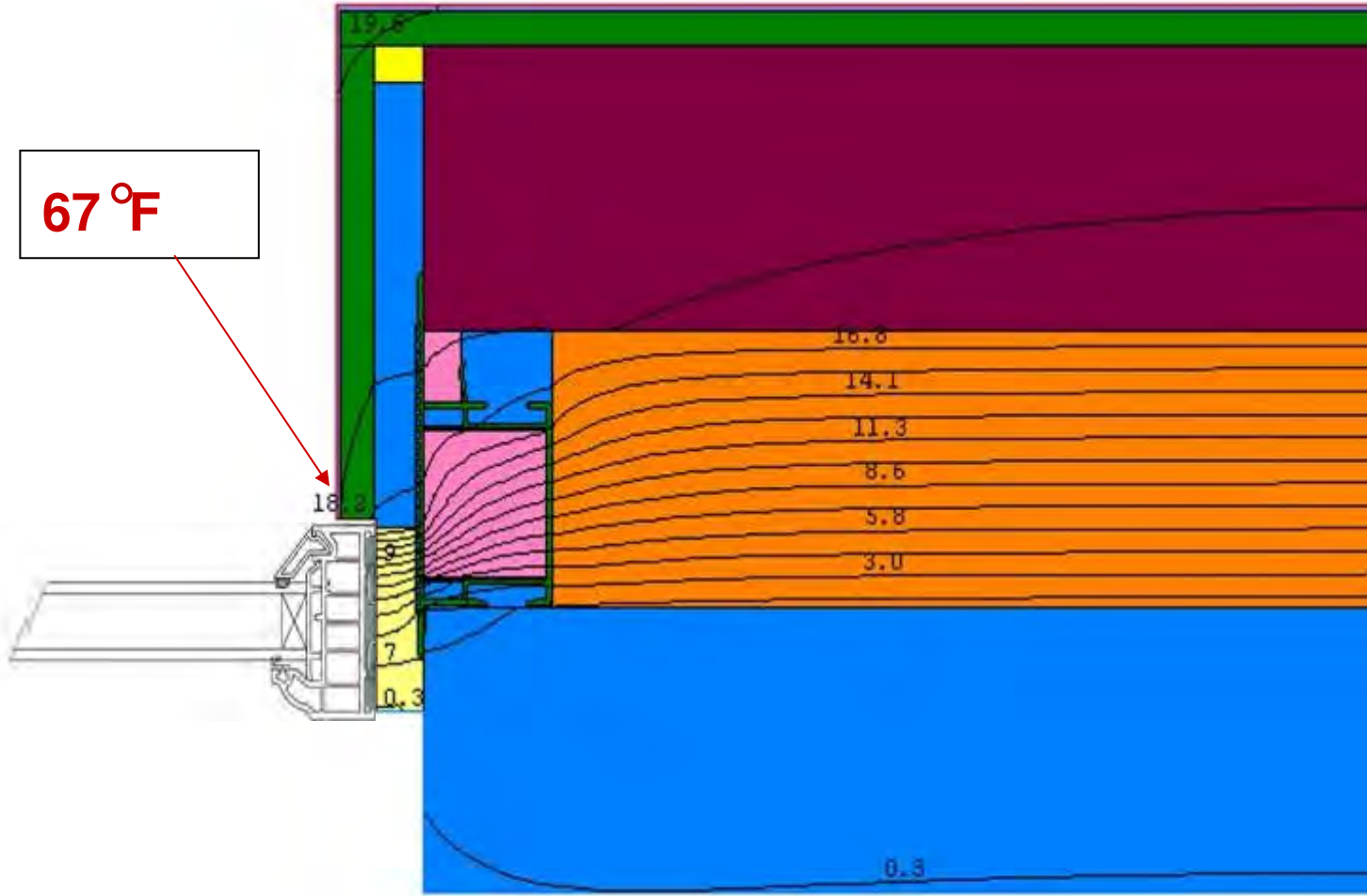


PVC Window : **3/16"** gap; **Silicone external seal**; **no insulation**

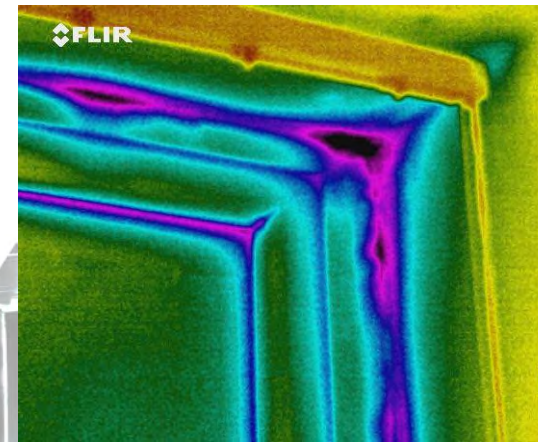


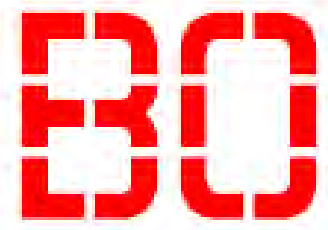
PVC Window: 5/8" gap ; Multi functional tape

Inside



Outside





In-situ Measurements in Fenestration Joints sealed with Tremco illbruck illmod Trio in Habo, Sweden

Measurement of vapour diffusion, condensation risk and moisture
storage in a wooden-frame house



Lars Krutzan, B. Sc.

Prof. Dr. Gerrit Höfker



In-situ measurements in penetration joints (Simulation and Validation)

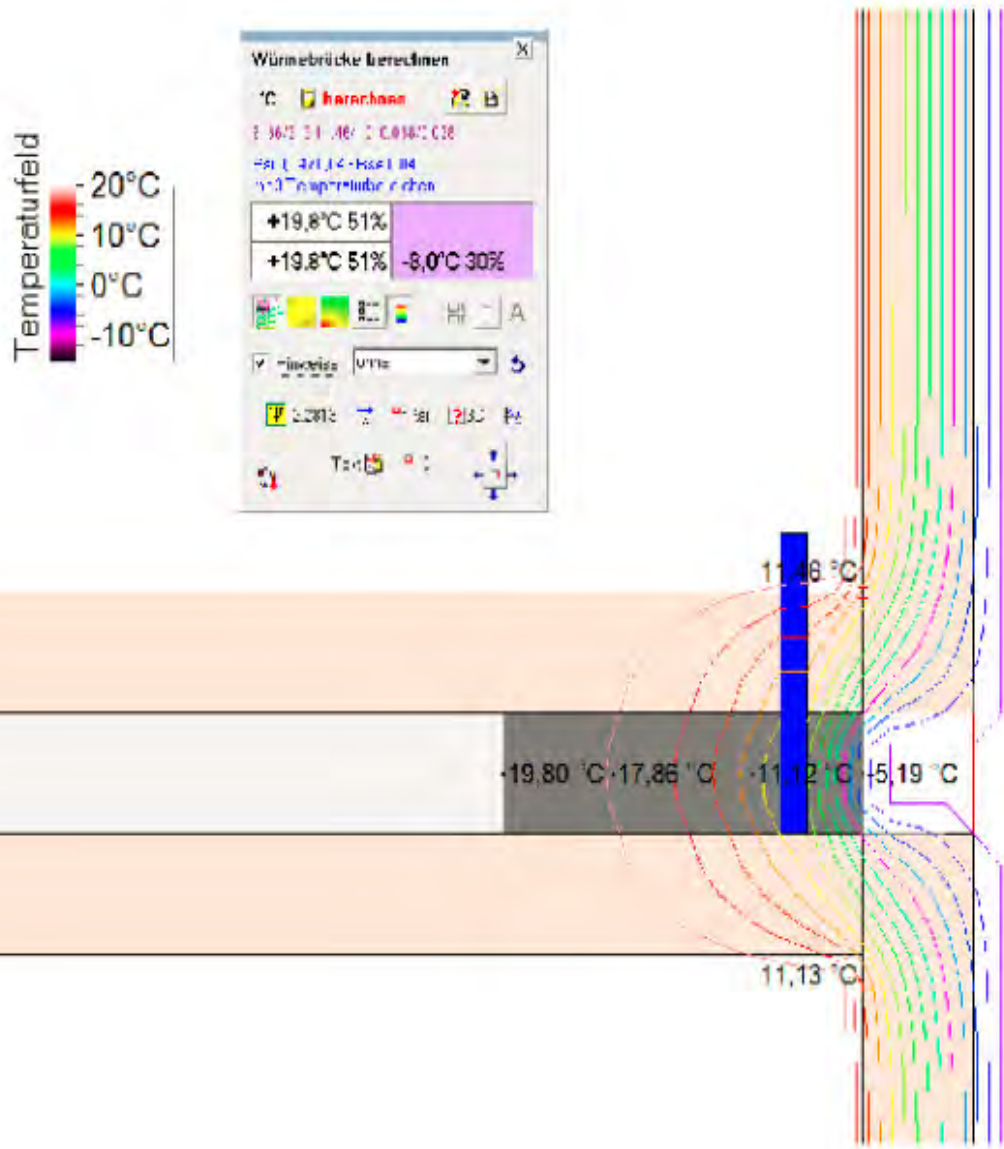
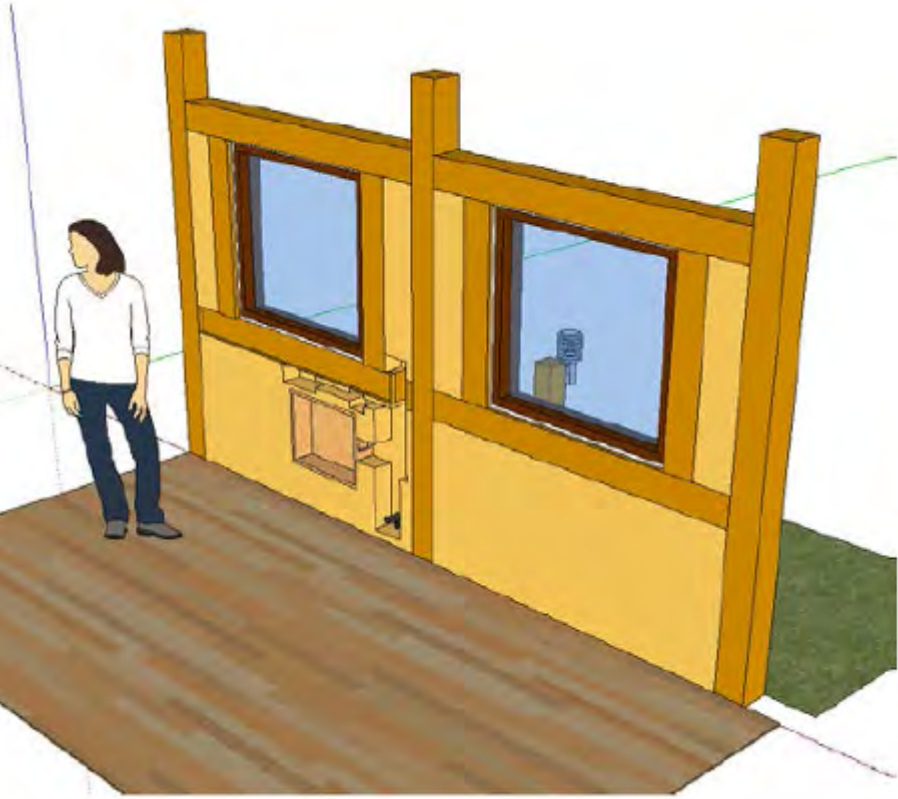


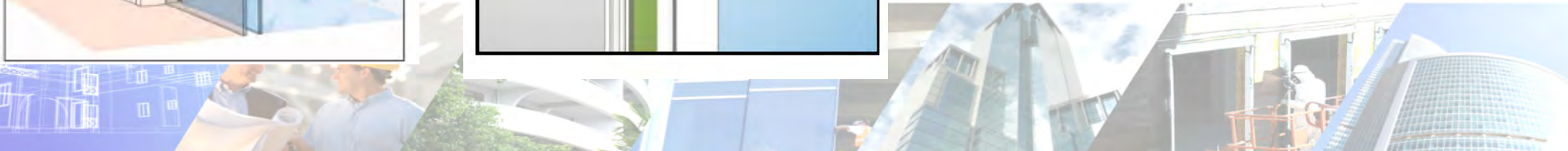
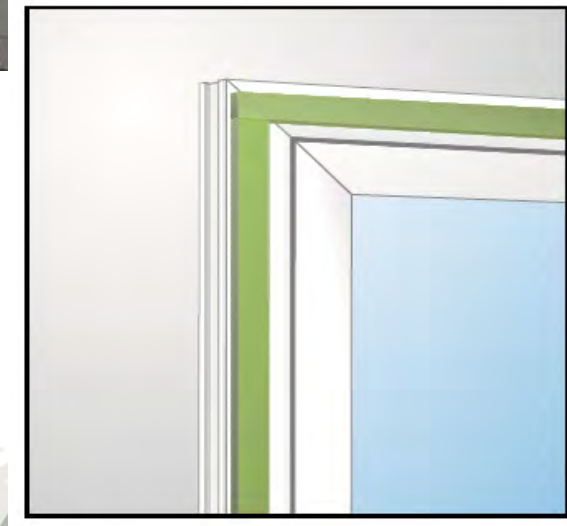
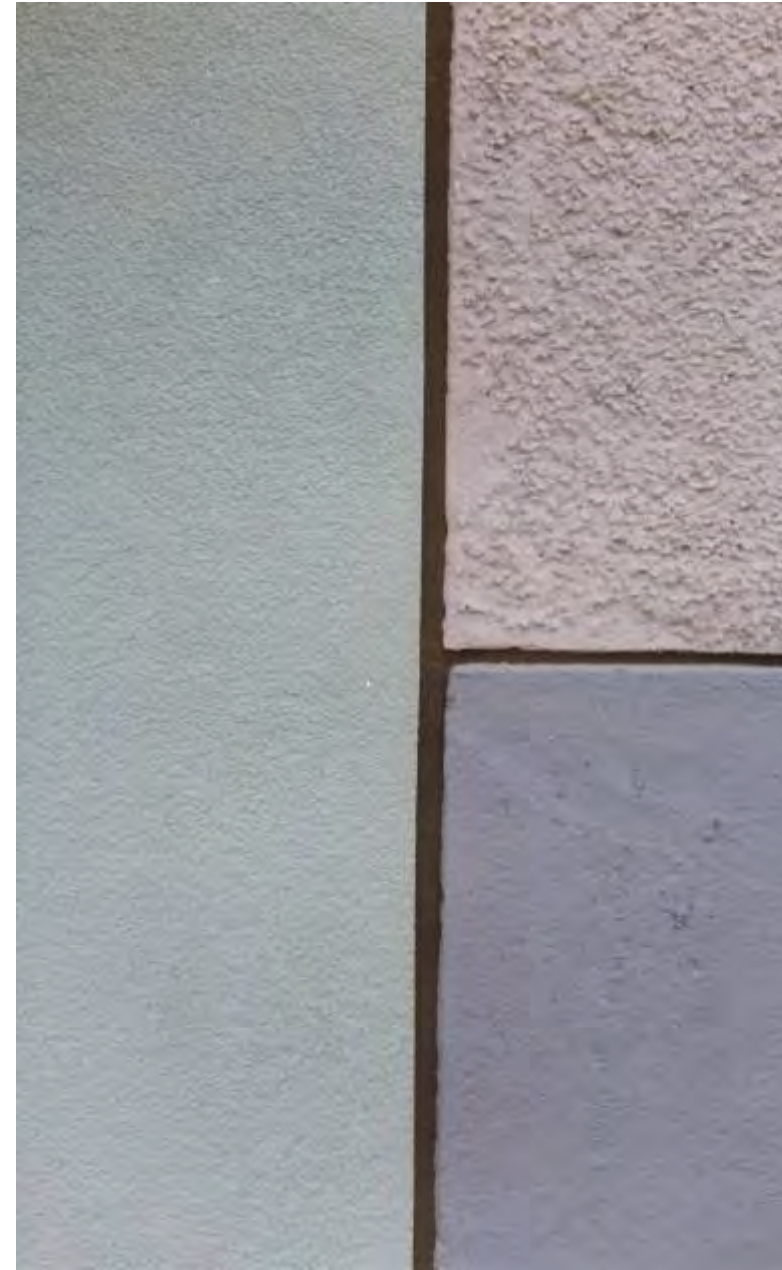
Figure 6: "Modules" that could each hold two ducts to which the illmod Trio was applied. The left picture shows the front aspect that faced the refrigerator with expanded illmod 600 used as a sealant. The right picture shows the posterior aspect that faced the climatic chamber. The illmod Trio was applied and the four sensors installed for recording. Left picture taken on 2nd Jun 2010, right picture taken on 14th Jul 2010.



On-site measurements in penetration joints



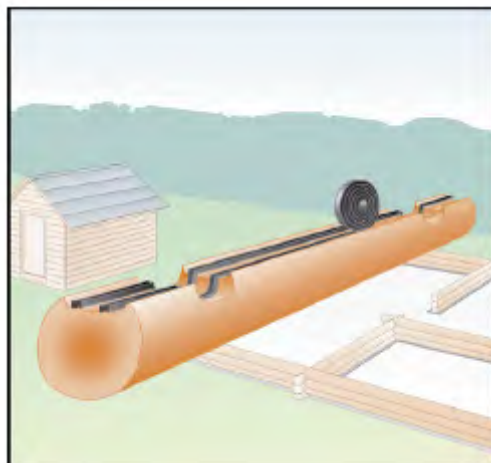
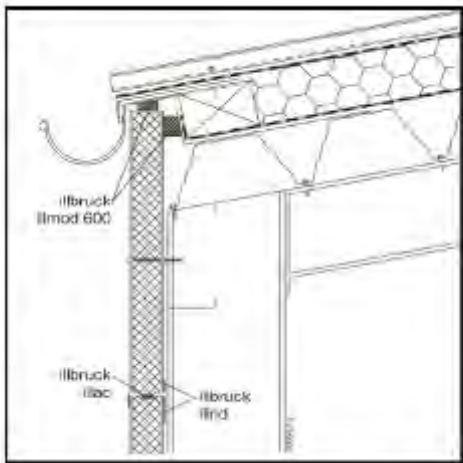
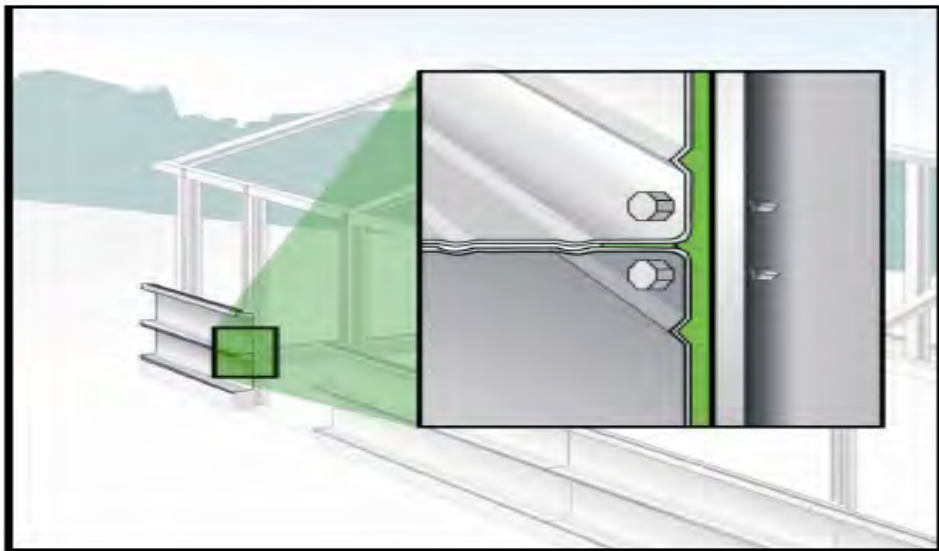
Field of applications for impre. tapes



Berlin Potsdamer Platz” T3 Solution references”



Field of applications for impre. tapes





SIP Panel Installation/ Fabrication

In plant application



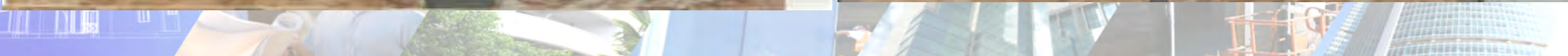
Field of applications for impre. tapes



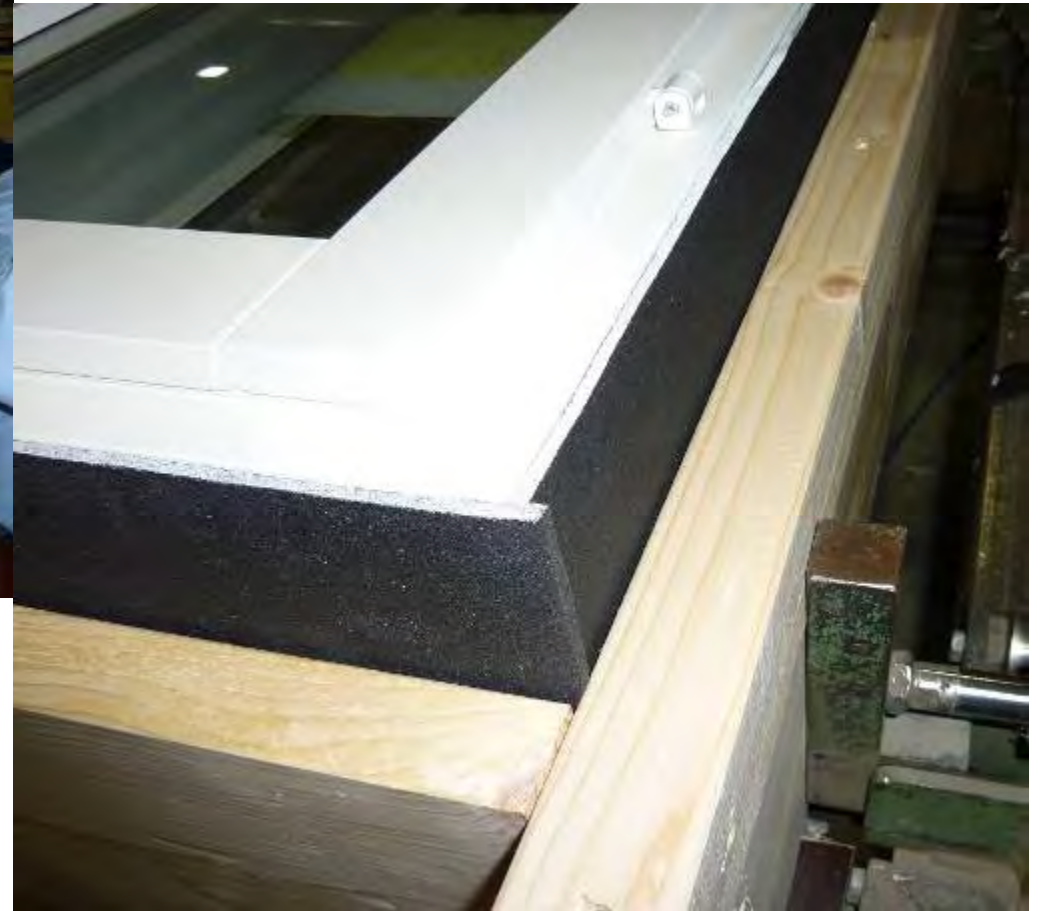
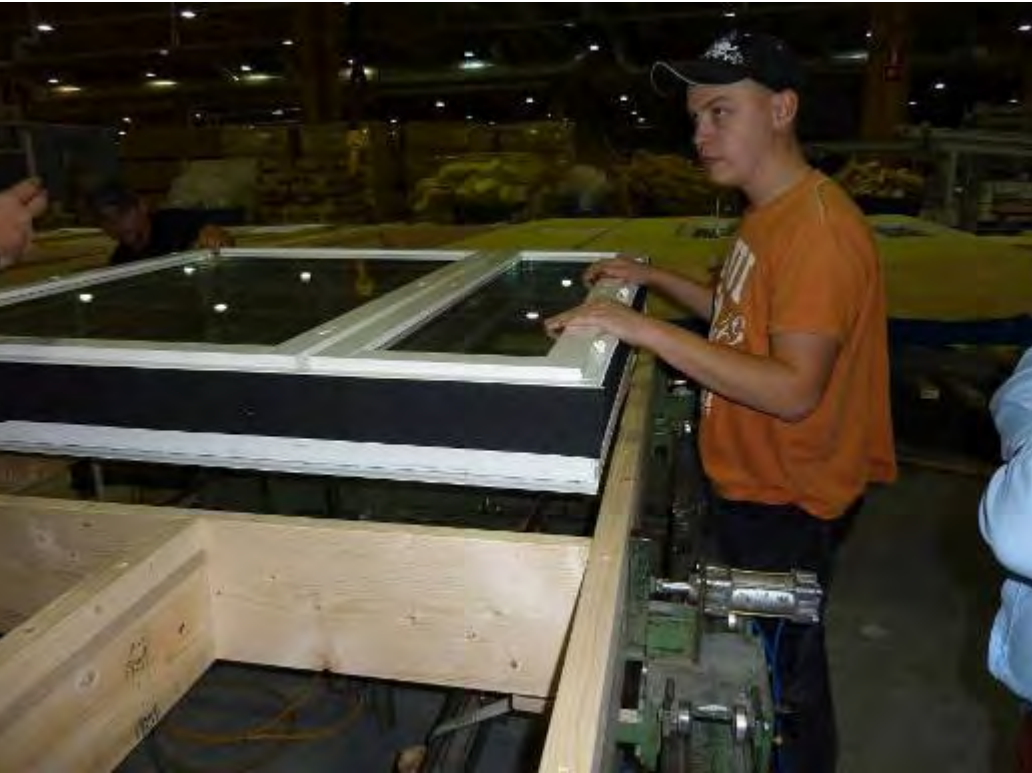
Field of applications for impre. tapes



Field of applications for impre. tapes



Field of applications for impre. tapes

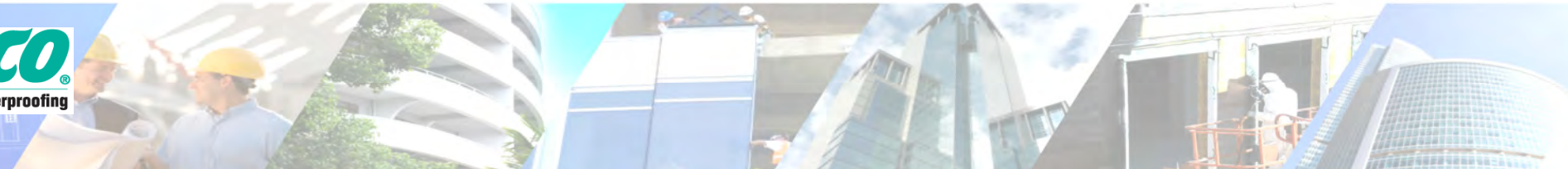




Perfect use for impregnated tapes?



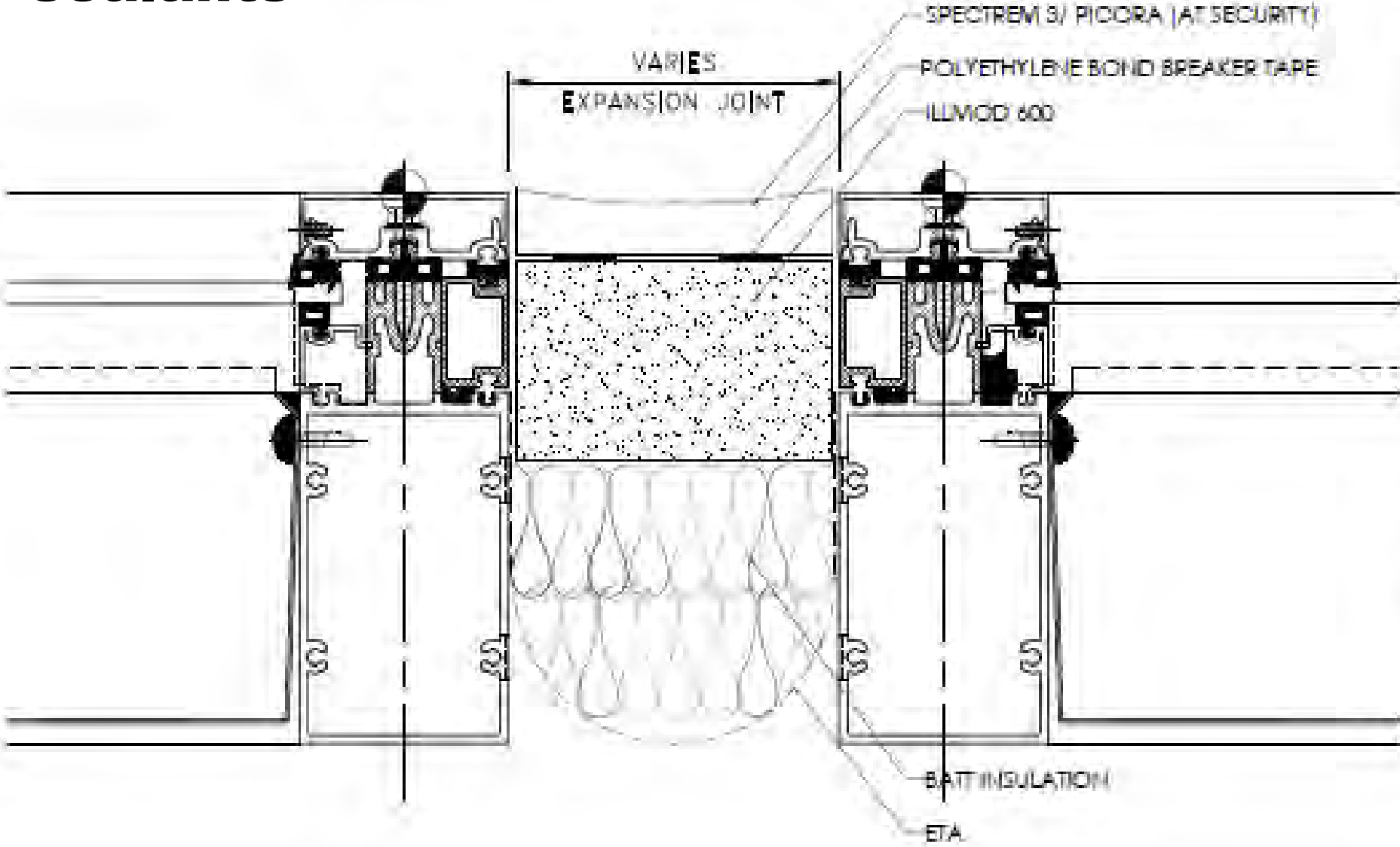
TREMCO
Commercial Sealants & Waterproofing



The hump point.....



Vertical Expansion/Seismic Joints with impregnated tapes in conjunction with wet sealants

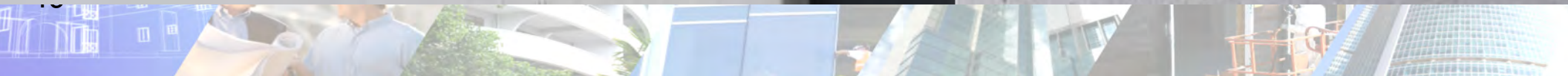


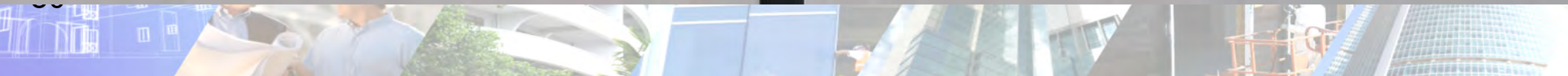
Technical drawing information including a title block with the FLYNN logo and project details.

FLYNN
CONSTRUCTION

PROJECT: [illegible]
DATE: [illegible]
SCALE: [illegible]











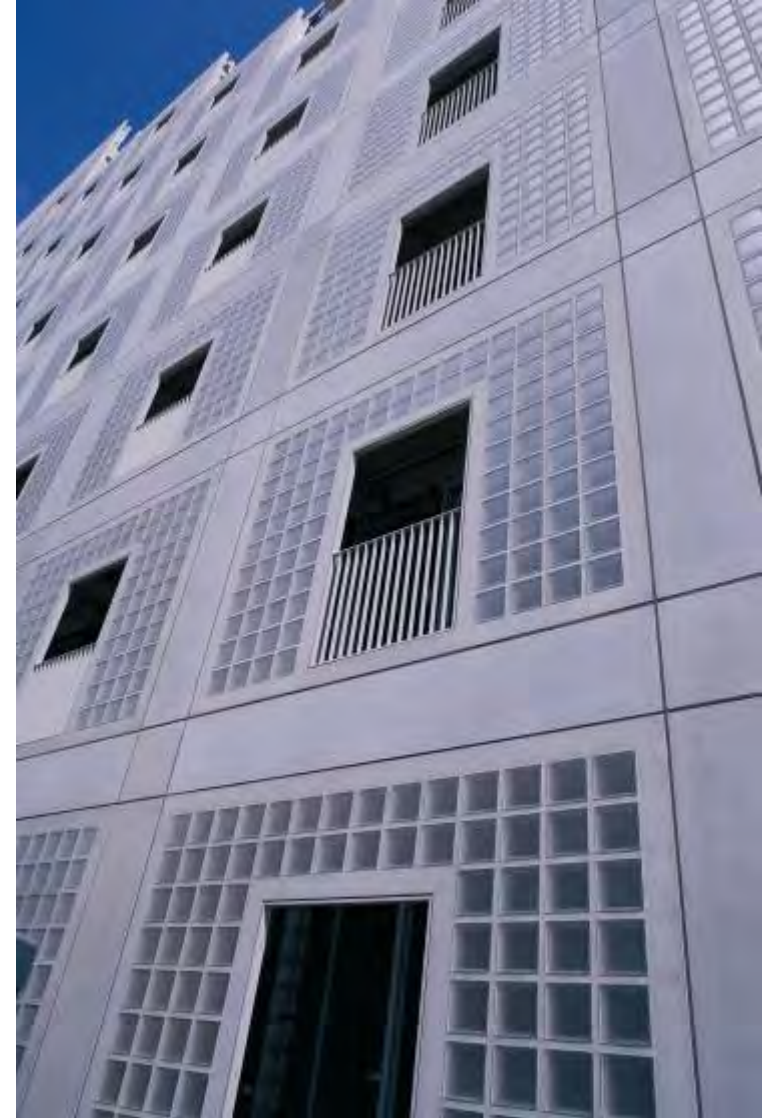
Seismic joints with illmod 600/Spectrem 1



Seismic joints with illmod 600/Spectrem 1



Impregnated pre compressed tape without sealant



Impregnated pre compressed tape without sealant



Tilt up wall Calgary, Alberta



Tilt up wall Calgary, Alberta



Impregnated pre compressed tape between metal panels

Photos



Front side of test article



Close-up of panel joint

Test Report
For

Tremco

Tested in Accordance with

ASTM E283
ASTM E331

Products Tested:

ExoAir 110, ExoAir Trio, Spectrem 1

Report No.: T0713-009-010

Test Start Time: 7/11/2013 11:46 AM

Test Completion Time: 7/11/2013 12:57 PM

Test Technician: Tim Mattox

Test Engineer: Tim Mattox





T3 is a solution approach to seal out weather around window and doors while sealing in comfort and energy savings. ExoAir Trio is a product used as an internal airtight seal and/or external weathertight but breathable seal in the **T3** solutions.



Outer seal

Provides a weather protection level while allowing for vapor diffusion.



Middle layer

Provides a thermal layer by filling the gap between the window frame and the wall.



Inner seal

Provides an airtight separation for the inside environment, serving as a vapor retarder to ensure occupant comfort.

ExoAir LEF

Low Expansion PU Foam
for Sound & Thermal
Insulation



Note: The above are general recommendations based on application. For jobsite specific specifications, please consult Tremco Technical Service.

PU Gun Foam



PU Gun Foam



Chemical background of PU-foam

Catalysts
Stabilizer
Plasticizer
Polyether / Polyester

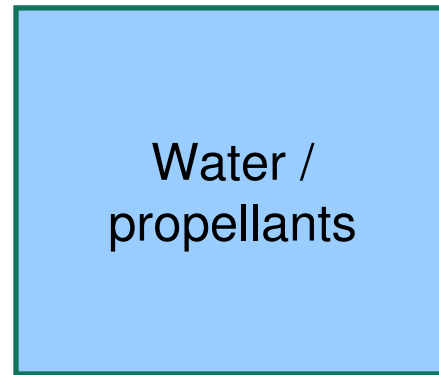
Polyol-Blend

+



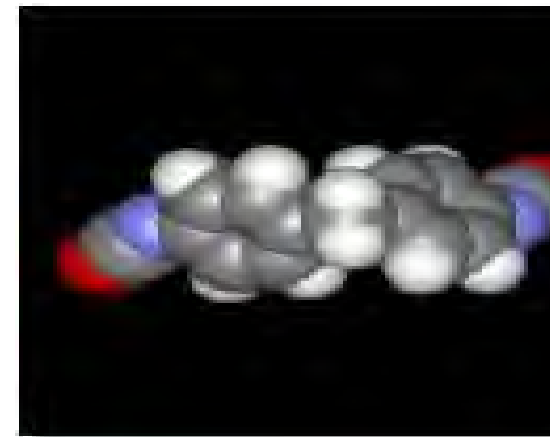
Isocyanate

+



Blowing agent

=



PU-foam

That isn't smart!!!



Spray foam is not UV stable!



3 weeks after application



PU Foam is reliable insulation when correctly applied





T3 is a solution approach to seal out weather around window and doors while sealing in comfort and energy savings. ExoAir Trio is a product used as an internal airtight seal and/or external weathertight but breathable seal in the **T3** solutions.



Outer seal

Provides a weather protection level while allowing for vapor diffusion.



Middle layer

Provides a thermal layer by filling the gap between the window frame and the wall.



Inner seal

Provides an airtight separation for the inside environment, serving as a vapor retarder to ensure occupant comfort.

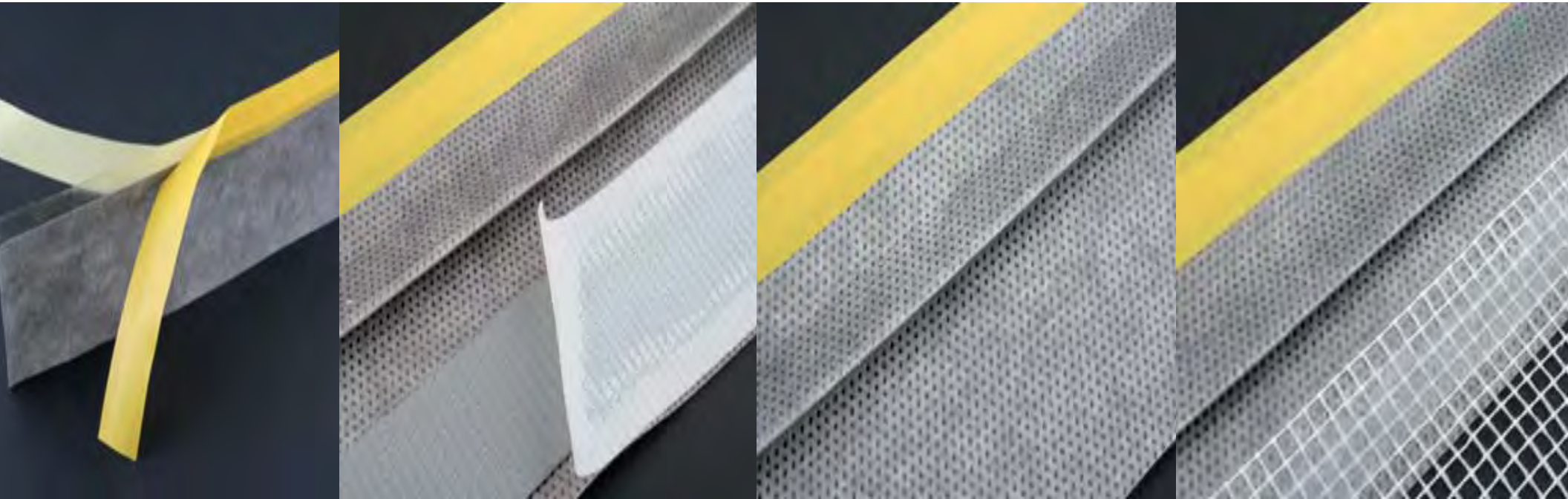


Note: The above are general recommendations based on application. For jobsite specific specifications, please consult Tremco Technical Service.

Why do We Claim Duo Membrane is Intelligent?



Moisture variable flashing tapes



Duo 2 x Acrylic and Butyl



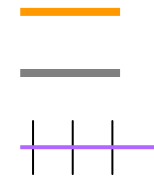
Duo 2 x Acrylic and Mesh



Duo 2 x Butyl



Duo 2 x Acrylic without Butyl



- Acrylic self adhesive
- Butyl adhesive
- Mesh



Moisture variable flashing tapes



Moisture variable flashing tapes



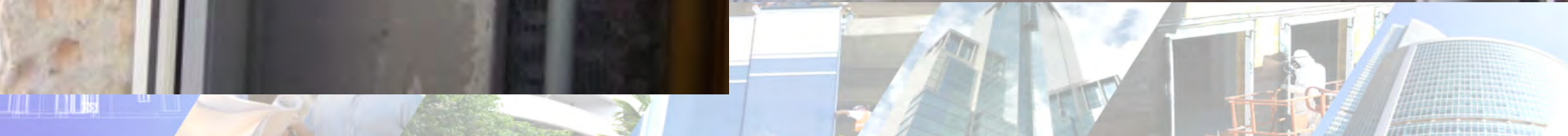
Moisture variable flashing tapes



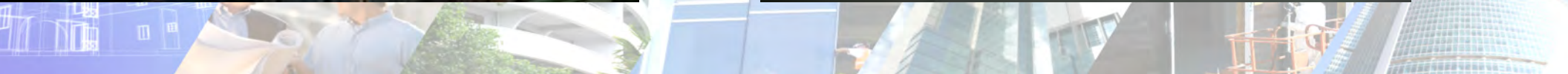
How to seal this?



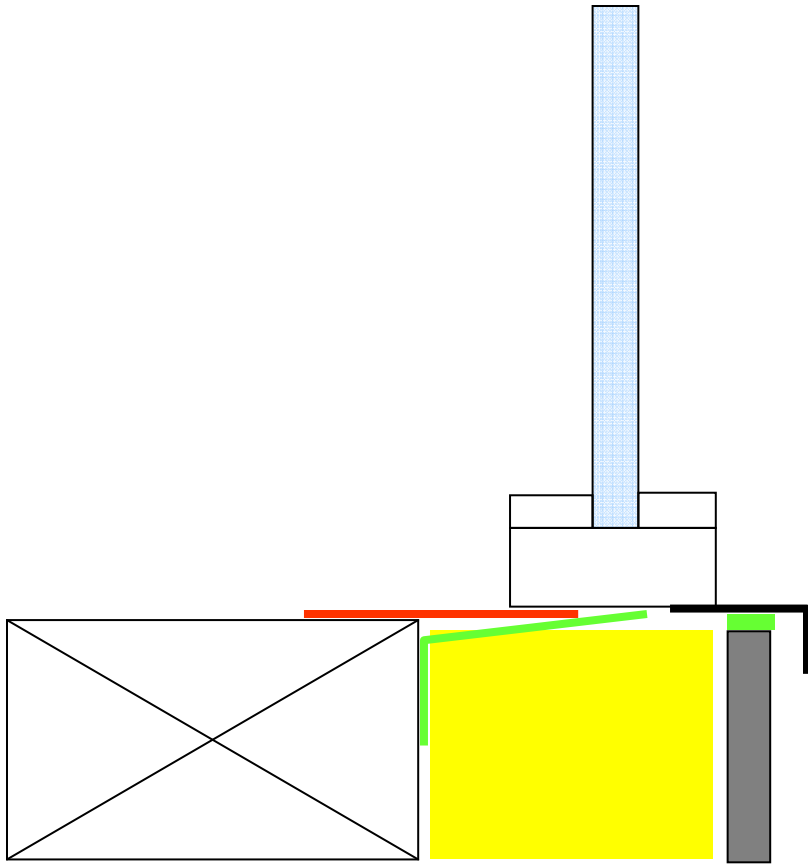
How to seal this?



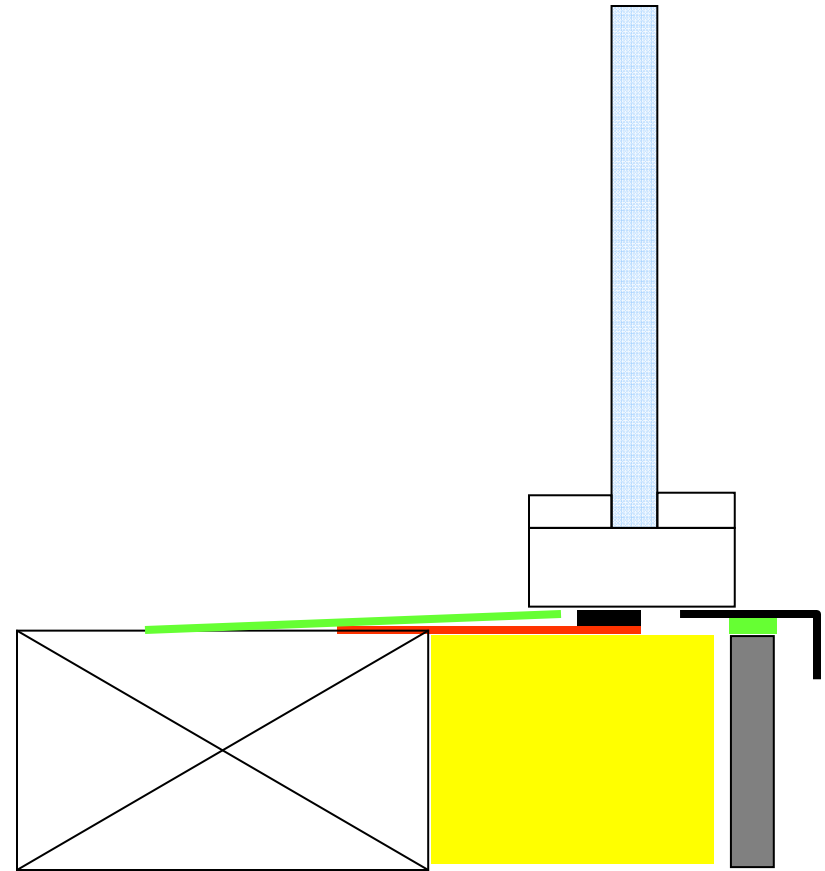
School project in Newcastle



How to handle this...?



Already installed



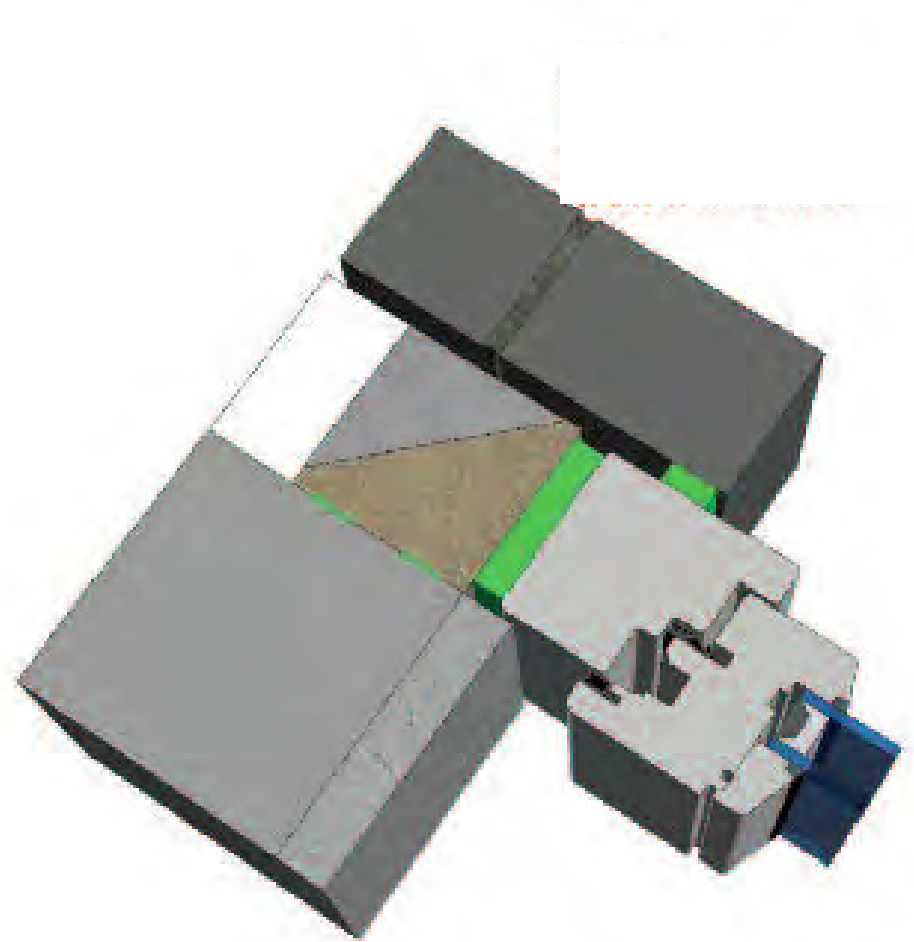
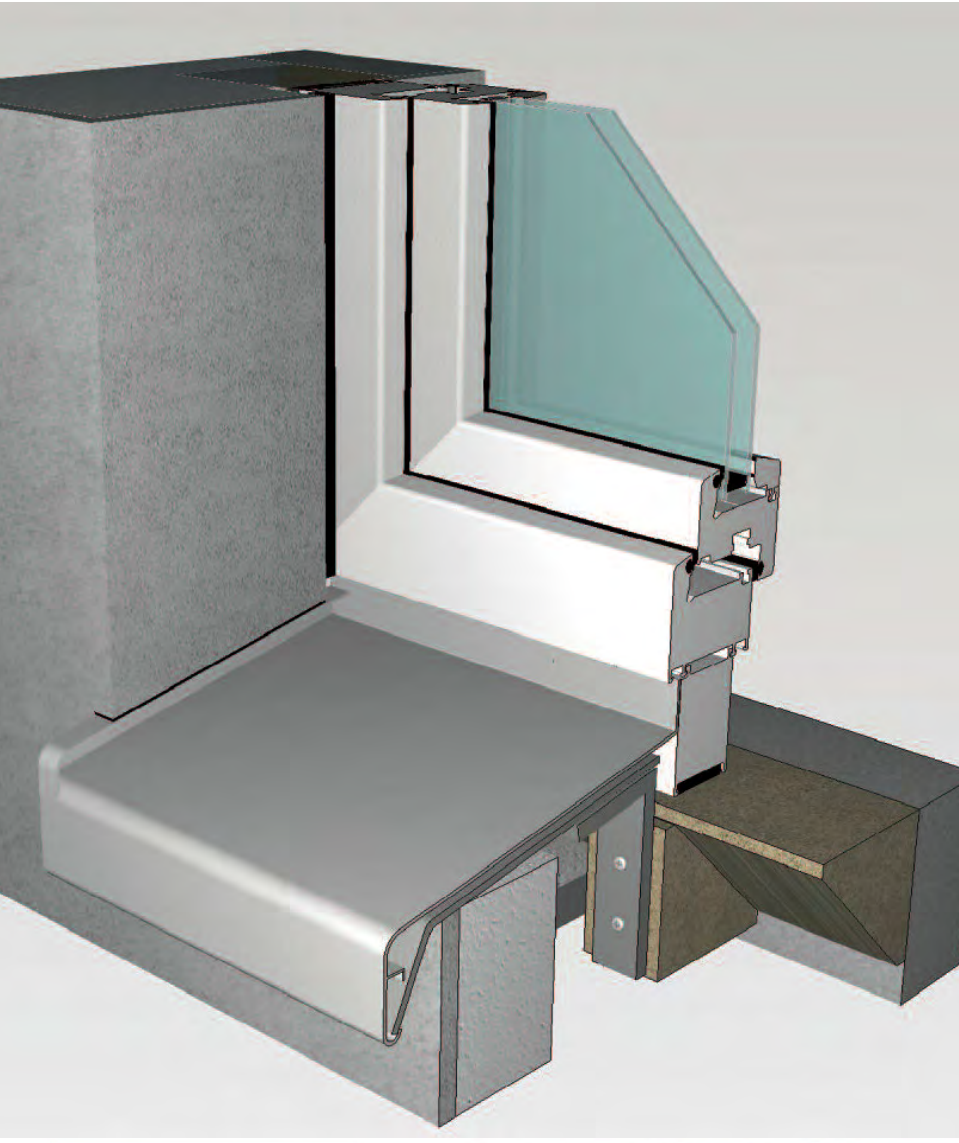
Not installed



School project in Newcastle, UK



Projecting Window installation – System Application



Application installation profile



- Apply 2 beads of adhesive to the profile



Projecting Window installation –System Application



➤ Bottom profile with adhesive



➤ Press hard, Profile will stick



Projecting Window installation –System Application



➤ 3 drill holes 8 mm with a HSS drill



➤ 7,5 mm window distance screws



Hillbruck Projecting Window installation –System Application



➤ Side profiles fixed with 2 beads of adhesive



➤ Press hard, use one screw for additional fixing for each profile



Projecting Window installation –System Application



➤ Insulation wedge as option for better thermal performance

➤ Rectangular connection to EIFS



Projecting Window installation –System Application



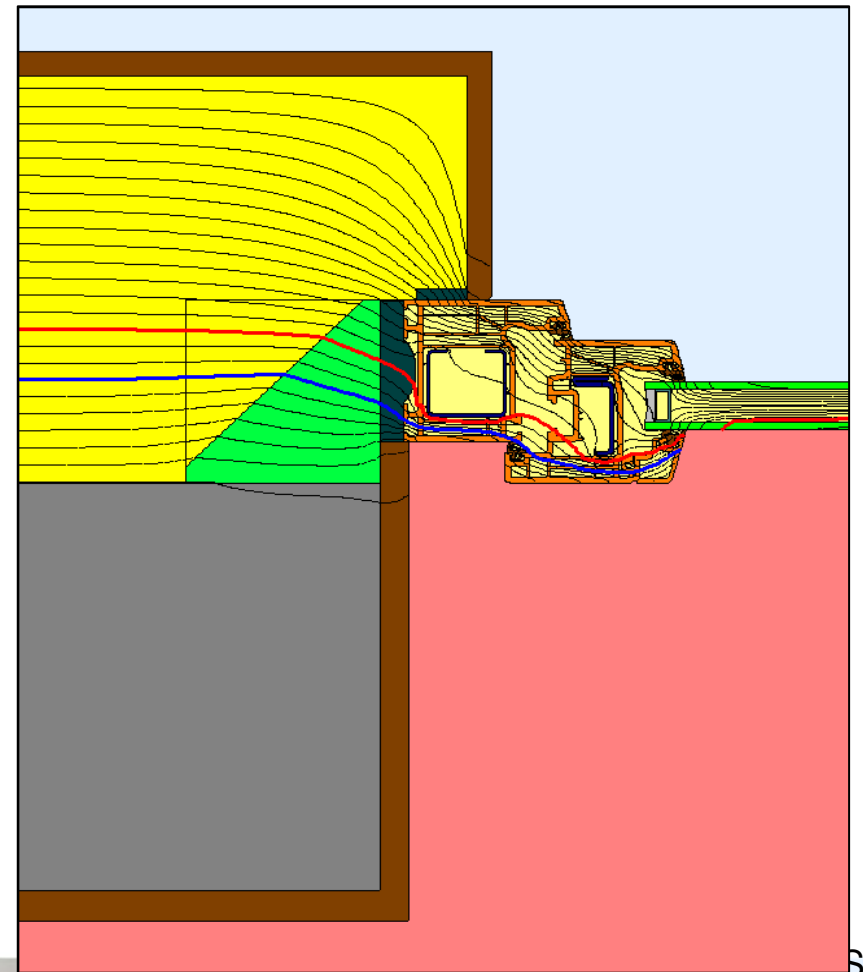
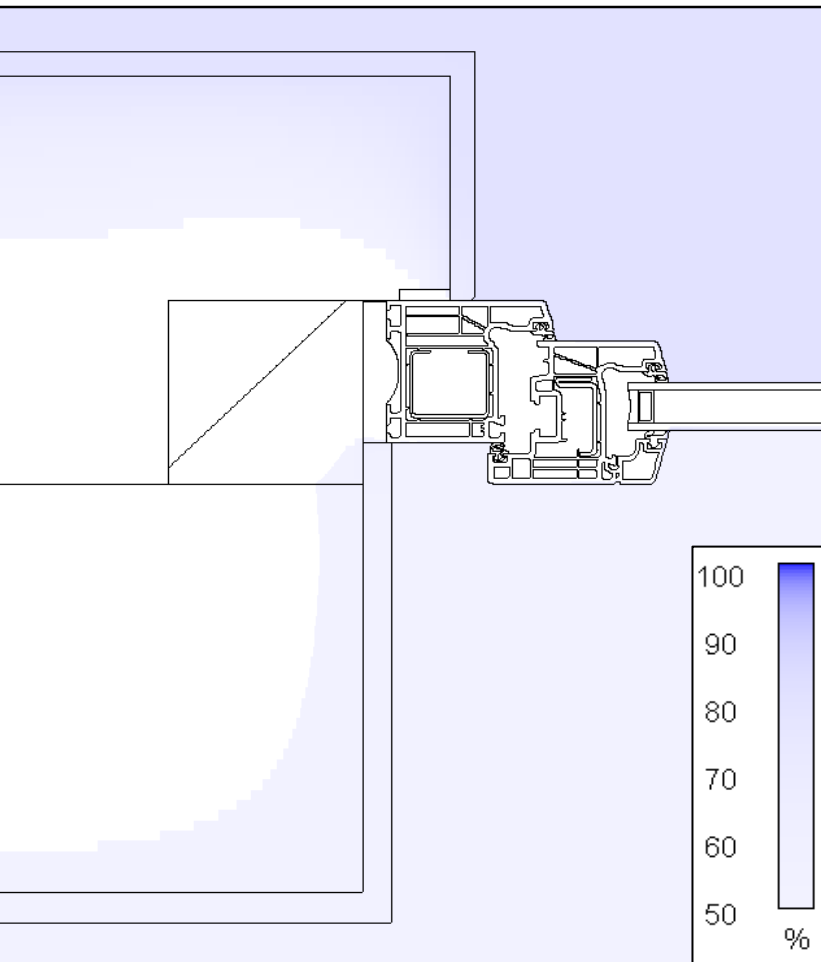
➤ Easy installation and sealing with multifunctional tape



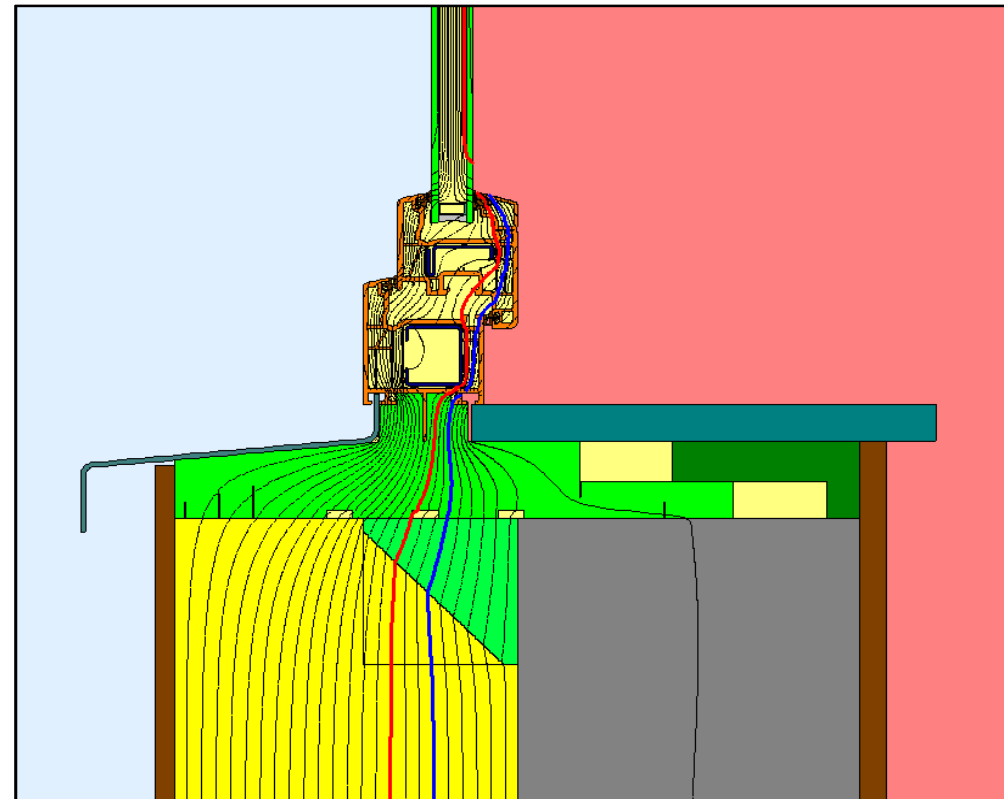
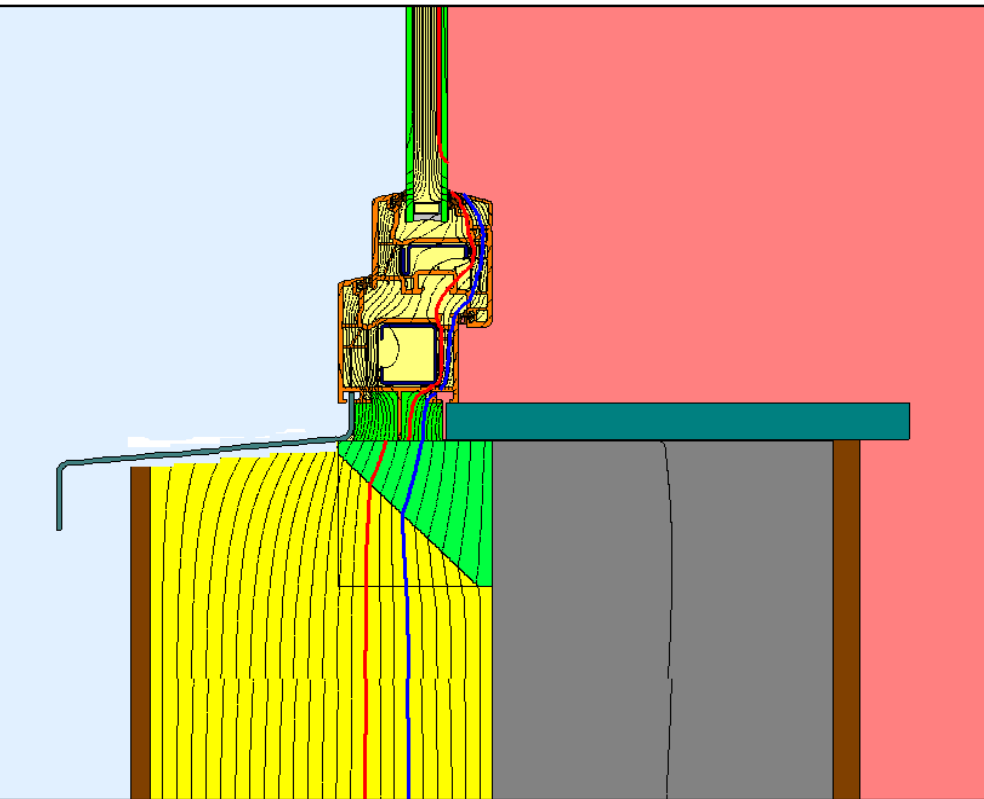
➤ Window fixing with 7,5 mm Window distance screws, pre-drill with 6,5 mm HSS drill, screw-in depth 40 mm



Projecting Window installation –System Thermal performance calculation



Projecting Window installation –System Thermal performance calculation



➤ Window sill component small

➤ window sill component large

